



SENNHEISER



# RS 2000

Wireless TV headphone system

Model: RS 2000, TR 2000, RR 2000

Instruction manual

## Important safety instructions



- ▶ Read this instruction manual carefully and completely before using the product.
- ▶ Always include this instruction manual when passing the product on to third parties.
- ▶ Do not use an obviously defective product.
- ▶ Only use the product in environments where wireless 2.4 GHz transmission is permitted.

### Preventing damage to health and accidents



- ▶ These headphones allow you to set higher volumes than conventional headphones. Protect your hearing from high volume levels.  
Permanent hearing damage may occur when headphones are used at high volume levels for long periods of time. Headphones of the Sennheiser brand sound exceptionally good even at low and medium volume levels and provide excellent speech intelligibility.
- ▶ To prevent hearing damage, set the volume to a low level before passing the product on to third parties.
- ▶ Do not use the product in an environment that requires your special attention (e.g. when performing skilled jobs).
- ▶ Always keep the headphones/MCA 800 charging adapter at least 3.94" (10 cm) from cardiac pacemakers or implanted defibrillators. The headphones/MCA 800 charging adapter contain/s magnets that generate a magnetic field which could cause interference with cardiac pacemakers and implanted defibrillators.
- ▶ Do not use the product near water. Do not expose the product to rain or moisture to reduce the risk of fire or electric shock.
- ▶ Keep the product, accessories and packaging parts out of reach of children and pets to prevent accidents. Swallowing and choking hazard.
- ▶ Only use the power supply units supplied by Sonova Consumer Hearing.

### Preventing damage to the product and malfunctions

- ▶ Always keep the product dry and do not expose it to extreme temperatures to avoid corrosion or deformation. The normal operating temperature is from 5 °C to 40 °C/ 41 °F to 104 °F.
- ▶ Use the product with care and store it in a clean, dust-free environment.
- ▶ Switch off the product after use to conserve battery power.
- ▶ Unplug the power supply unit from the wall socket
  - to completely disconnect the product from the power source,

- during lightning storms or
- when not using the product for long periods of time.
- ▶ Always ensure that the power supply unit is
  - in a safe operating condition and easily accessible,
  - properly plugged into the wall socket,
  - only operated within the permissible temperature range,
  - not exposed to direct sunlight for longer periods of time in order to prevent heat accumulation.
- ▶ Varnish or furniture polish may degrade the feet of the transmitter, which could stain your furniture. You should therefore place the transmitter on a non-slip pad to avoid potential staining of furniture.
- ▶ Do not operate the product near heat sources.
- ▶ Clean the product only with a soft, dry cloth.
- ▶ Use only attachments/accessories/spare parts supplied or recommended by Sonova Consumer Hearing.

### Safety instructions for Lithium-Polymer rechargeable batteries





#### WARNING

If abused or misused, rechargeable batteries may leak. In extreme cases, they may even present a risk of

- explosion
- heat and fire development
- smoke and/or gas development
- damage to health and/or the environment

	Only use rechargeable batteries and chargers recommended by Sonova Consumer Hearing.
	Do not leave the product / rechargeable batteries unattended while charging.
	Only charge the product / rechargeable batteries at ambient temperatures between 10 °C and 40 °C / 50 °F and 104 °F and do not charge them near easily flammable objects.
	Do not heat the product / rechargeable batteries above 70 °C/158 °F. Avoid exposure to sunlight and do not throw the product / rechargeable batteries into fire.
	Switch rechargeable battery-powered products off after use.
	When not using the product / rechargeable batteries for extended periods of time, charge them regularly (about every three months).

	Avoid prolonged skin contact with the product, rechargeable battery, charger or charging cable when connected to a power source. These components can heat up during charging and cause skin irritation.
	Dispose of defective products with built-in rechargeable batteries at special collection points or return them to your specialist dealer to facilitate recycling.

### **Intended use/Liability**

This wireless TV headphone system is suitable for use with TV sets, hi-fi systems, and home cinema systems and can be connected to an analog audio source.

This product is intended for private domestic use only. It is not suitable for commercial use. This product is also not intended to be used with portable audio devices.

It is considered improper use when the product is used for any application not named in the corresponding product documentation.

Sonova Consumer Hearing GmbH does not accept liability for damage arising from misuse or improper use of this product and its attachments/accessories.

Before putting the product into operation, please observe the respective country-specific regulations.

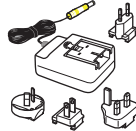
## Package contents



Stethoset receiver with built-in rechargeable battery  
Model: RR 2000



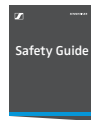
Transmitter with charging compartment  
Model: TR 2000



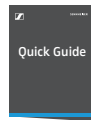
Power supply unit with multi-country adapters (EU, UK, US, AU)  
Model: NT 5-10AW p



Stereo audio cable with 3.5 mm jack plugs, 1.5 m



Safety guide



Quick guide

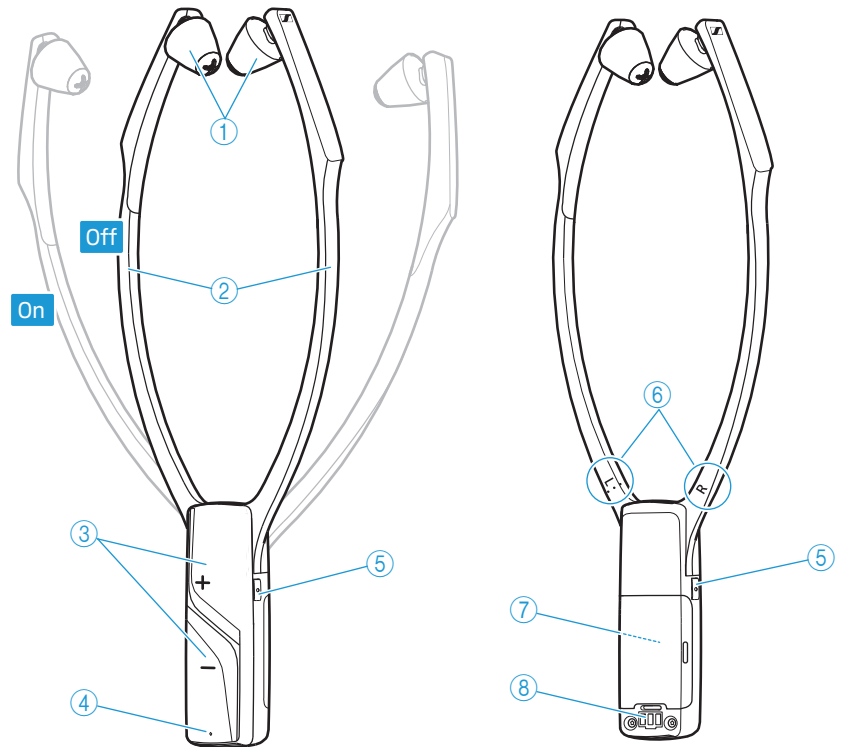
Online you can find:

- this detailed instruction manual and additional information ([www.sennheiser-hearing.com/download](http://www.sennheiser-hearing.com/download)).
- a list of accessories on the RS 2000 product page at [www.sennheiser-hearing.com](http://www.sennheiser-hearing.com) (to purchase online or contact your local Sonova Consumer Hearing partner: [www.sennheiser-hearing.com/service-support](http://www.sennheiser-hearing.com/service-support)).

# Product overview

## Overview of the stethoset receiver

Model: RR 2000

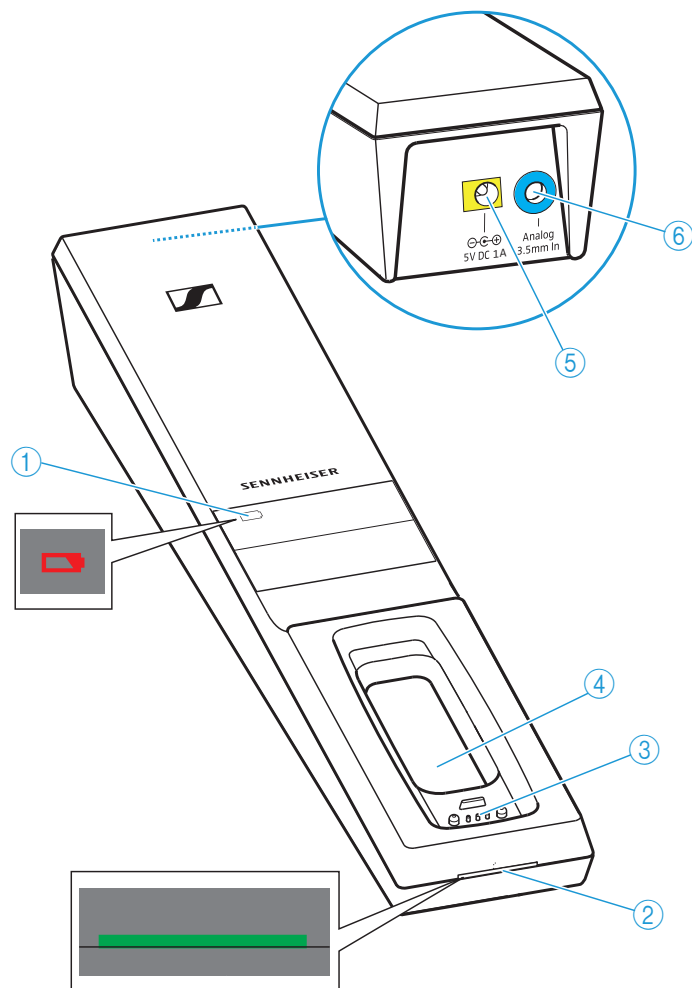


- ① Ear pads, replaceable
- ② Ear bows with on/off function
- ③ Volume buttons + and -
- ④ Receiver status LED (see below)
- ⑤ Balance buttons for the right ear and the left ear
- ⑥ R marking for the right ear and L marking for the left ear
- ⑦ Built-in rechargeable battery
- ⑧ Charging contacts

Receiver status LED	The stethoset receiver...
	... is switched off.
	... is connected to the transmitter.
	... is connected to the transmitter, the rechargeable battery is almost empty.
	... is not connected to the transmitter or cannot connect to the transmitter.
	... is not connected to the transmitter or cannot connect to the transmitter, the rechargeable battery is almost empty.

## Overview of the transmitter

Model: TR 2000



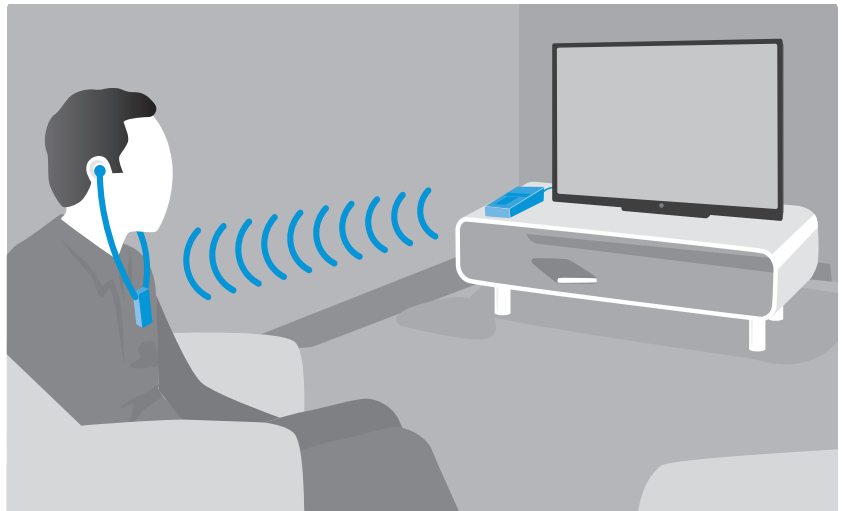
- ① *Charge status LED* (see page 13)
- ② *Transmitter status LED* (see below)
- ③ Charging contacts for stethoset receiver with holding magnets
- ④ Charging compartment for stethoset receiver
- ⑤ *5V DC 1A* socket (marked yellow) for connecting the power supply unit
- ⑥ *Analog 3.5 mm In* audio input (marked blue) for connecting an analog audio source (3.5 mm jack socket)

Transmitter status LED	The transmitter...
○  -----  ...	... is in standby mode.
  -----  ...	... and the stethoset receiver are connected.

## Putting the RS 2000 into operation

### Setting up the transmitter


- ▶ Place the transmitter near your audio source.
- ▶ Separate the transmitter from other wireless devices in the room by at least 50 cm/20" to avoid interference.
- ▶ Do not place the transmitter close to metal objects such as shelf bars, reinforced concrete walls, etc. as this can decrease the transmitter's range.









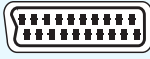

## Connecting the transmitter to an audio source


You can connect the transmitter to an analog audio source (e.g. a TV and a stereo hi-fi system).

 You can also refer to the beginner's video guides on how to connect your digital wireless headphone system to a TV:

[www.sennheiser-hearing.com/how-to-videos](http://www.sennheiser-hearing.com/how-to-videos)

- ▶ Switch your audio source off before connecting the transmitter.
- ▶ Check the connection possibilities of your audio source (audio output, usually marked "OUT").
- ▶ Select the corresponding connection cable and, if necessary, a suitable adapter.
- ▶ To connect the transmitter to your audio source, refer to the connection diagram suitable for your audio source (see the following chapters). Follow the color codings on the transmitter and on the cables.

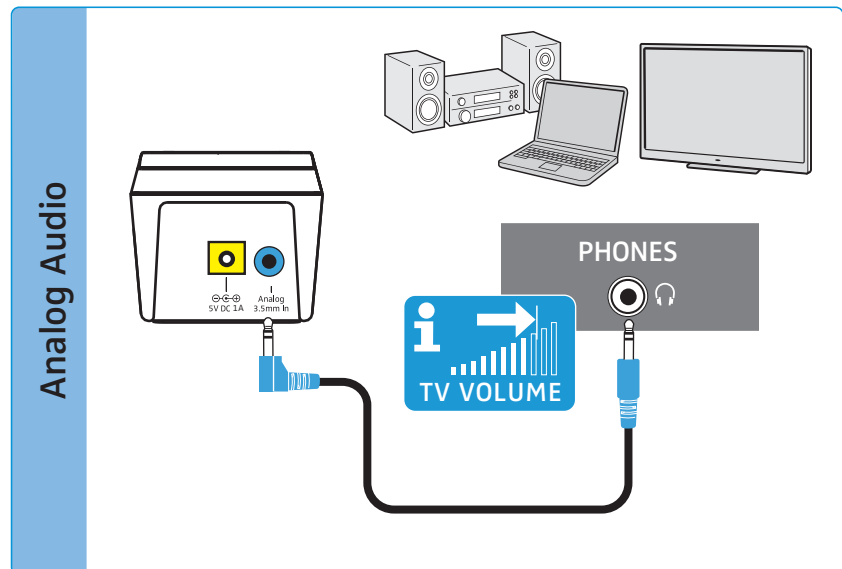
Connection possibilities of the audio source	Color coding on the transmitter	Connection cable	Page
<b>A</b> 3.5 mm jack socket (analog) 		Stereo audio cable	10
<b>B</b> RCA (analog) 		Stereo audio cable with RCA adapter (3.5 mm jack socket to 2 RCA connectors; optional accessory)	11
<b>C</b> SCART (analog) 		Stereo audio cable with SCART adapter (3.5 mm jack socket to SCART connector; optional accessory)	11

 If you want to connect the transmitter to a TV that has only one HDMI output, you need an active HDMI audio adapter. Using this adapter, you can connect your TV to the transmitter.

An HDMI audio adapter and/or other accessories are available from your Sonova Consumer Hearing partner.

**A** Connection possibility A: 3.5 mm jack socket (analog)

- ▶ Connect the stereo audio cable to the blue Analog 3.5 mm In audio input (3.5 mm jack socket) of the transmitter and to the 3.5 mm headphone socket of your audio source.



- i** Adjust the volume of the headphone socket on your TV/audio source to **at least a medium level**. This improves the quality of wireless audio transmission. For detailed information, please refer to the instruction manual of your TV/audio source.

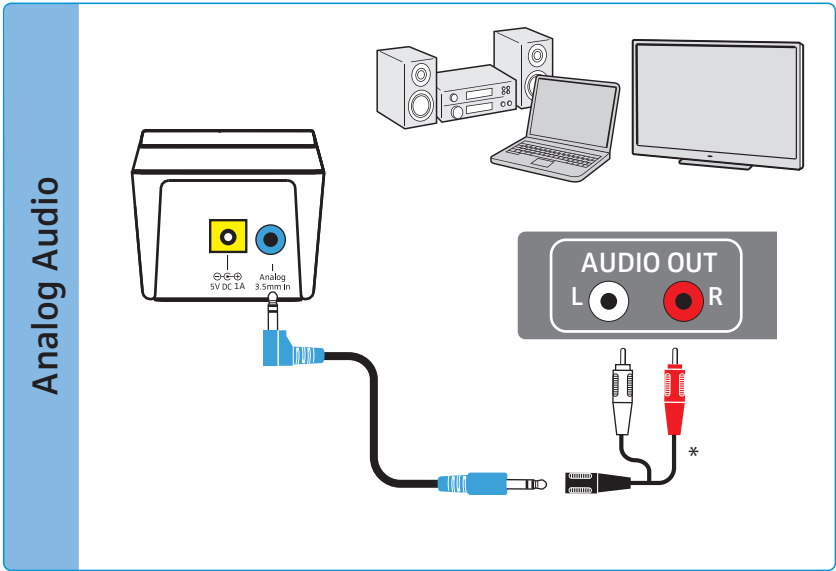
If the headphones socket on your audio source is a 6.3 mm/¼" jack socket, you require an adapter (3.5 mm jack plug to 6.3 mm/¼" jack plug, optional accessory) for the supplied 3.5 mm stereo audio cable.

- i** Some TV models mute the loudspeakers when you connect the transmitter to the 3.5 mm headphone socket. Other TV models have their own menu for adjusting the volume of the headphone socket. Check the menu of your TV for information on how to deactivate the muting function or adjust the volume. Alternatively, connect the TV and the transmitter using a different connection possibility (B or C).

**B**

**Connection possibility B: RCA sockets (analog)**

- ▶ Plug the RCA adapter\* onto the stereo audio cable.
- ▶ Connect the stereo audio cable to the blue 3.5 mm jack socket of the transmitter.
- ▶ Connect the RCA connectors to the RCA sockets (mostly labeled "AUDIO OUT" or  $\ominus \oplus$ ) of your audio source. Connect the red connector to the red RCA socket and the white connector to the white or black RCA socket.

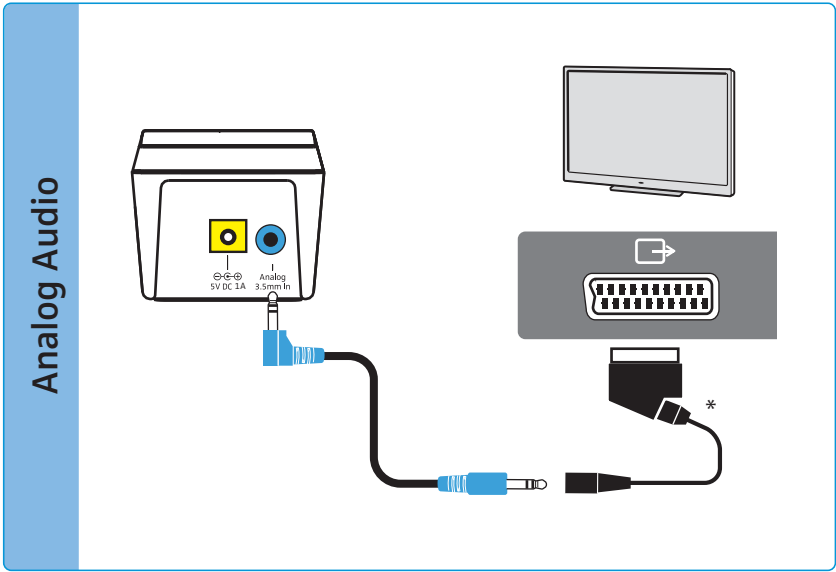


\* optional accessory

**C**

**Connection possibility C: SCART socket (analog)**

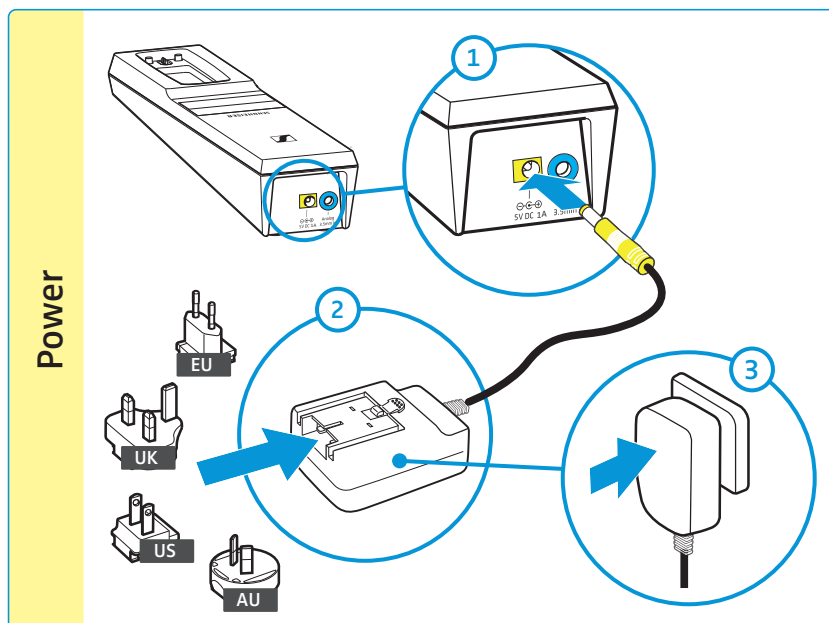
- ▶ Plug the SCART adapter\* onto the stereo audio cable.
- ▶ Connect the stereo audio cable to the blue 3.5 mm jack socket of the transmitter.
- ▶ Connect the SCART connector to the SCART socket (mostly labeled  $\ominus \oplus$  or  $\ominus \rightarrow$ ) of your audio source.



\* optional accessory

## Connecting the transmitter to the power supply system



- 1 Connect the connector of the power supply unit to the yellow socket of the transmitter.
- 2 Select a suitable country adapter and slide it onto the power supply unit until it clicks audibly into place.
- 3 Plug the power supply unit into the wall socket. The transmitter is in standby mode.

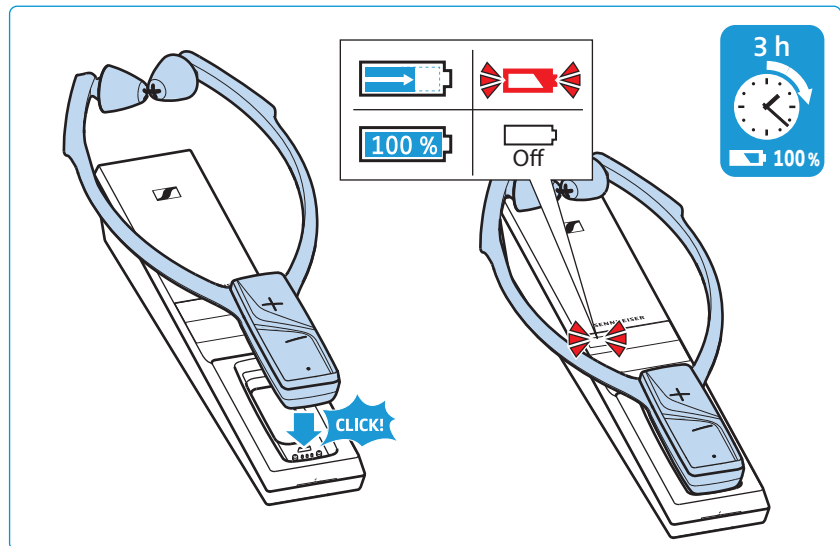


## Charging the stethoset receiver's rechargeable battery


A complete charging cycle takes about 3 hours. Before using the receiver for the first time, charge its rechargeable battery for a complete charging cycle without interruption.

When the rechargeable battery is almost empty, the *Receiver status* LED lights up red. The stethoset receiver switches off after a few minutes.

- ▶ Place the stethoset receiver into the transmitter's charging compartment so that the volume buttons face upwards. The stethoset receiver is magnetically oriented to the correct position. The stethoset receiver automatically switches off and the *Charge status* LED  on the transmitter lights up red. When the rechargeable battery is fully charged, the *Charge status* LED  goes off.

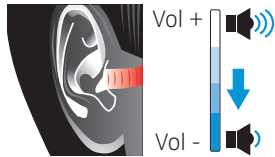


**i** Always store the stethoset receiver in the transmitter's charging compartment to ensure that it is fully charged when needed. The intelligent battery charging technology prevents overcharging.

If the transmitter's *Charge status* LED  flashes red, a charging error/battery error has occurred. In this case, remove the stethoset receiver from the transmitter's charging compartment. More information on the rechargeable battery can be found on page 19.

# Using the RS 2000

## Switching the wireless headphone system on



### WARNING

**Danger due to high volume levels!**

This receiver allows you to set higher volumes than conventional devices. Constant high-volume use can cause hearing damage.

- ▶ Before putting the stethoset receiver on, set the volume on the receiver to a low level.
- ▶ Do not expose yourself to high volume levels for extended periods of time.

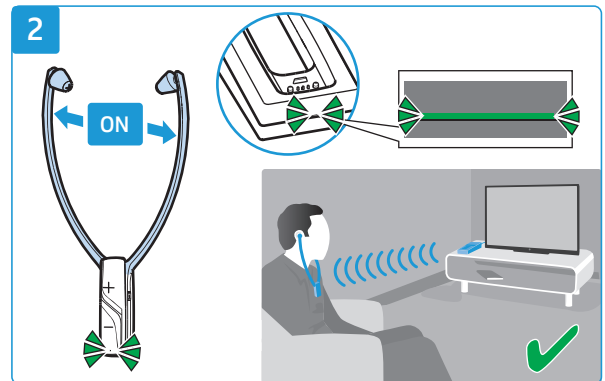
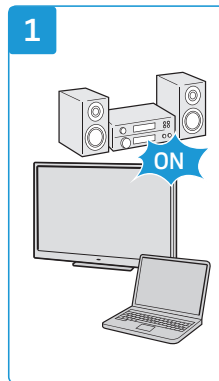


- 1 Switch your audio source on.

If the transmitter is connected to the headphone socket (see page 10) of your TV/audio source, adjust the volume of the headphone socket on your TV/audio source to at least a medium level.

- 2 Take the stethoset receiver out of the transmitter's charging compartment and pull the ear bows apart so that you can put the receiver on.

The stethoset receiver automatically switches on when you pull the ear bows apart. The *Receiver status* LED lights up green. The transmitter automatically switches on and the *Transmitter status* LED lights up green. The audio transmission starts.



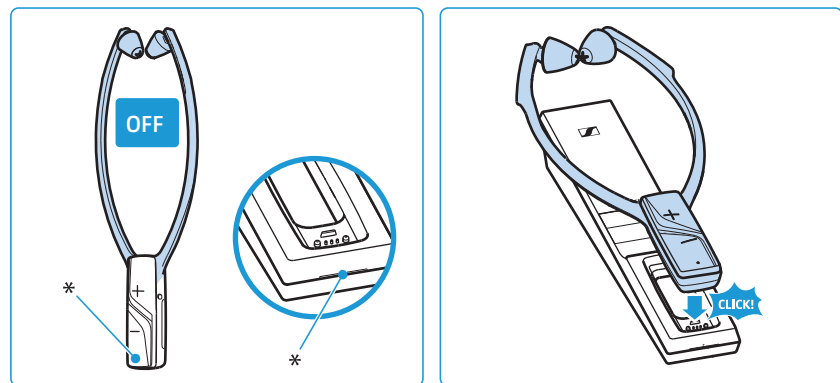
## Switching the wireless headphone system off

- ▶ Take the stethoset receiver off so that the ear bows fold inwards.

The stethoset receiver automatically switches off after 3 seconds. The *Receiver status* LED goes off. The transmitter automatically switches off (standby) when there is no stethoset receiver connected. The *Transmitter status* LED goes off.

- ▶ Always store the stethoset receiver in the transmitter's charging compartment to ensure that it is fully charged when needed.

The charging process starts (see page 13).



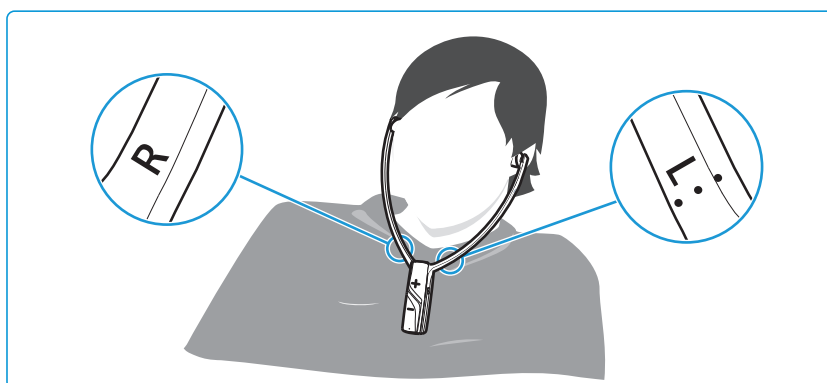
\* LED goes off

To disconnect the transmitter from the power supply system (e.g. when you are on holiday):

- ▶ Unplug the power supply unit from the wall socket.

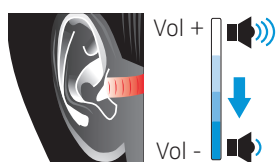
## Wearing the stethoset receiver

- ▶ Wear the stethoset receiver so that it hangs freely from your ears and rests lightly on your chest. When putting the stethoset receiver on, observe the **L** (left) and **R** (right) markings on the rear of the ear bows. The volume buttons face away from your body to facilitate ease of use.
- ▶ Wear the stethoset receiver so that
  - the ear pads are positioned just in front of your ear canals.
  - you feel a gentle pressure on your ears. The ear pads adapt to your ear form. If you find the ear pads uncomfortable, try other ear pads in different materials and forms which are optionally available from your Sonova Consumer Hearing partner.
  - the stethoset receiver hangs freely from your ears and rests lightly on your chest.



**i** Spare ear pads in different materials and forms are available from your Sonova Consumer Hearing partner.

## Adjusting the volume

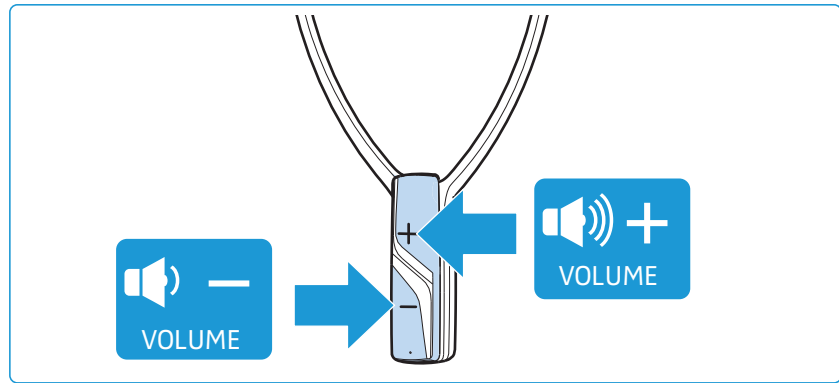


### WARNING

#### Danger due to high volume levels!

- ▶ Before putting the stethoset receiver on, set the volume on the stethoset receiver to a low level.
  - ▶ Do not expose yourself to high volume levels for extended periods of time.
- 
- ▶ Press the volume button **+** or the volume button **-** until the volume is adjusted to a comfortable level.

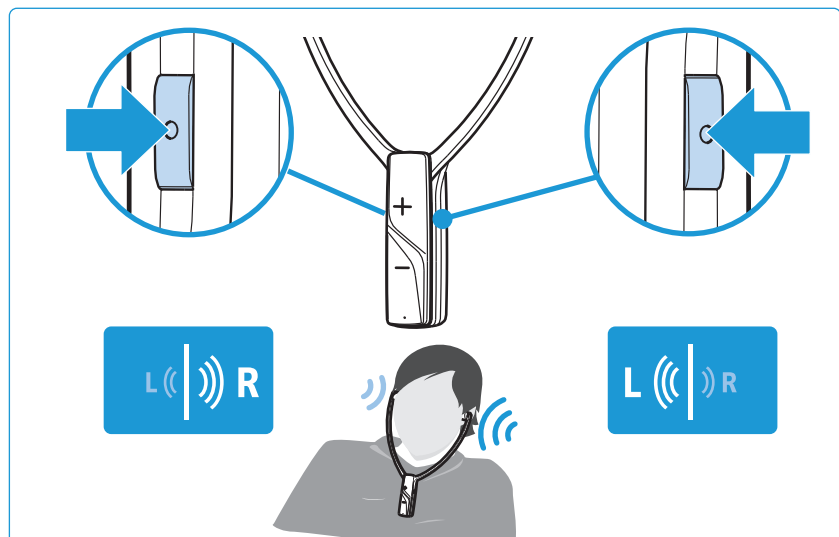




## Adjusting the balance

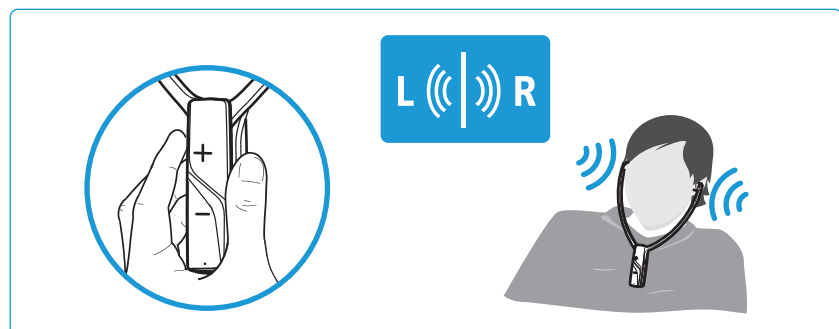
The balance buttons allow for left/right volume adjustment. Adjust the balance so that you hear equally well with both ears.

- ▶ Press the *Balance* buttons on the right and left side of the stethoset receiver to gradually increase or reduce the volume for your right or left ear.

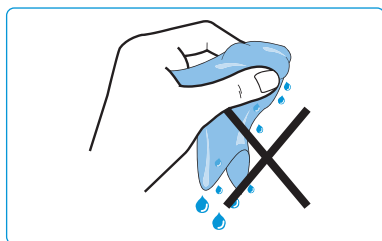


To reset the balance setting to the middle setting:

- ▶ Simultaneously press the *Balance* buttons on the right and left side of the stethoset receiver.



## Cleaning and maintaining the RS 2000



### CAUTION

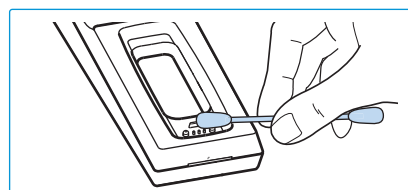
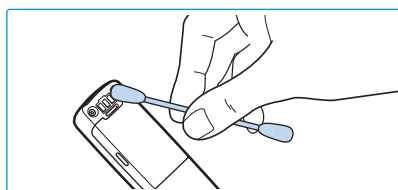
**Liquids can damage the electronics of the product!**

Liquids entering the housing of the product can cause a short-circuit and damage the electronics.

- ▶ Keep all liquids far away from the product.
- ▶ Do not use any solvents or cleansing agents.

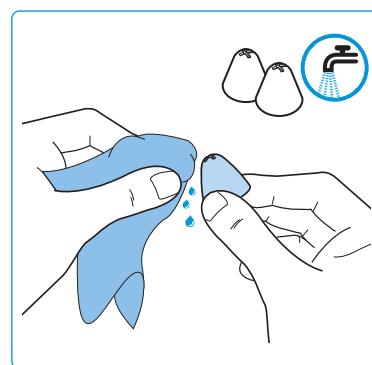
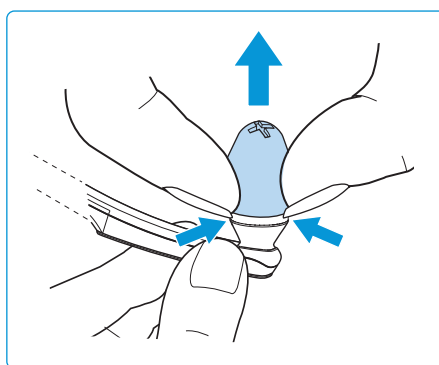
To clean the wireless headphone system:

- ▶ Switch your wireless headphone system off and disconnect the transmitter from the wall socket before cleaning.
- ▶ Clean the product only with a soft, dry cloth.
- ▶ Clean the charging contacts on the stethoset receiver and in the charging compartment from time to time using e.g. a cotton swab.



To clean the ear pads:

- ▶ Reach behind the ear pads with your fingernails so that you can carefully detach the ear pads from the stethoset receiver.
- ▶ Clean the ear pads under lukewarm running water.
- ▶ Let the ear pads air dry at room temperature for at least 12 hours before using them again.
- ▶ Put the ear pads back on the stethoset receiver. The rubber ring of the ear pads locks into place on the stethoset receiver.



**i** For reasons of hygiene, you should replace your ear pads from time to time. Spare ear pads in different materials and forms are available from your Sonova Consumer Hearing partner.

## Replacing the stethoset receiver's rechargeable battery

The BAP 800 rechargeable battery of the stethoset receiver is compactly built into the receiver housing and does not have to be replaced or removed.

If the operating time of the stethoset receiver decreases drastically or if a charging error is displayed during charging (see page 13), the rechargeable battery may be exhausted or defective and has to be replaced.

---

### CAUTION

#### **Danger of damage to the product!**

During the warranty period, the rechargeable batteries must only be replaced or removed by an authorized Sonova Consumer Hearing partner, otherwise the warranty will be null and void.

- ▶ Contact your Sonova Consumer Hearing partner if the rechargeable batteries need to be replaced or removed.

---

Outside the warranty period, the rechargeable batteries may be replaced or removed by any qualified service center in an appropriate manner. Instructions for qualified service centers on how to replace or remove the rechargeable batteries are available from your Sonova Consumer Hearing partner.

You need suitable tools for replacement. We therefore recommend to have the rechargeable battery replaced by your Sonova Consumer Hearing partner.

Do not return a product with a defective battery to your dealer or Sonova Consumer Hearing partner unless requested to do so. You can find your local Sonova Consumer Hearing partner at [www.sennheiser-hearing.com/service-support](http://www.sennheiser-hearing.com/service-support).

At the end of its operational lifetime, this product with its built-in rechargeable battery must be disposed of separately from normal household waste. You can find more information here: see page 27.

## Using additional functions

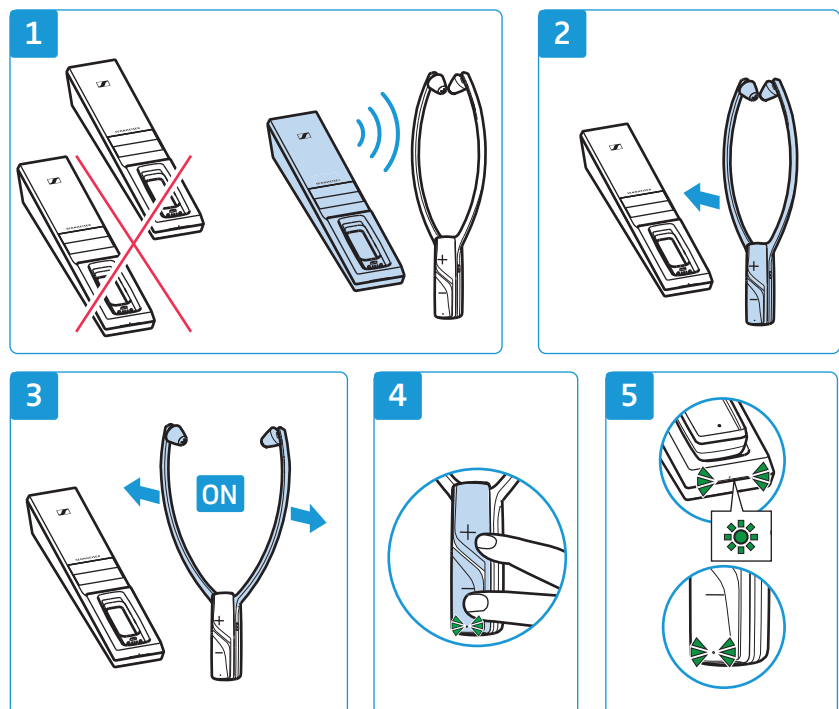
The following additional functions are not required for normal use of the wireless headphone system. You can, however, extend the potential use of the system.

### Pairing the stethoset receiver with the transmitter

The stethoset receiver and the transmitter of your wireless headphone system are factory pre-paired. The following steps are only necessary if you want to reestablish the pairing or pair additional stethoset receivers with the transmitter.

You can simultaneously connect up to 2 paired stethoset receivers with your transmitter.

- 1 Make sure that there is only 1 transmitter within transmission range with which you want to pair the stethoset receiver.
- 2 Place the stethoset receiver as close as possible to the transmitter.
- 3 Switch the stethoset receiver on by pulling the ear bows apart.
- 4 Simultaneously press and hold the volume buttons  $+/-$  for at least 5 seconds until the *Receiver status* LED flashes green rapidly.
- 5 Then release the volume buttons  $+/-$ .  
Once pairing is completed, the *Receiver status* LED and the *Transmitter status* LED light up green. The audio transmission starts.



## Charging the rechargeable battery using the MCA 800 charging adapter

If you have purchased an optional MCA 800 charging adapter, you can also charge the stethoset receiver using the charging adapter.



### WARNING

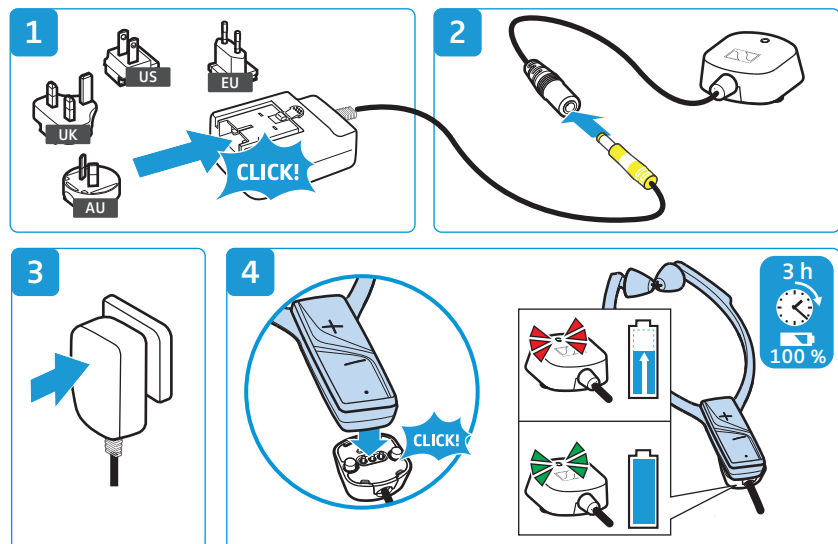
#### Interference due to magnetic fields!



The MCA 800 charging adapter generates stronger permanent magnetic fields. These can cause interference with cardiac pacemakers and implanted defibrillators (ICDs).

- ▶ Always maintain a distance of at least 3.94" (10 cm) between the holding magnets of the charging adapter and the cardiac pacemaker or implanted defibrillator.

- 1 Select a suitable country adapter and slide it onto the power supply unit until it clicks audibly into place.
- 2 Connect the connector of the power supply unit to the connection socket of the MCA 800 charging adapter.
- 3 Plug the power supply unit into the wall socket.
- 4 Connect the charging adapter to the charging contacts on the stethoset receiver. The charging adapter is magnetically oriented to the correct position.  
The rechargeable battery is being charged. The LED on the charging adapter lights up red. When the rechargeable battery is fully charged, the LED lights up green.



You can also use the stethoset receiver during charging. Note, however, that the receiver can get slightly warm during charging.

If the LED on the charging adapter flashes red and green, a charging error/battery error has occurred. In this case, disconnect the charging adapter from the stethoset receiver. More information on the rechargeable battery can be found on page 19.

## If a problem occurs ...

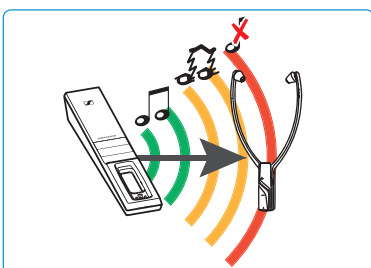
Problem	Possible cause	Possible solution	Page
The transmitter does not switch on	No connection to the power supply system.	Check the connections of the power supply unit.	12
The headphones cannot be switched on	The rechargeable battery is empty.	Recharge the rechargeable battery.	13
	The rechargeable battery is deep discharged.	Recharge the rechargeable battery for several hours. If the rechargeable battery is deep discharged, the charging process might take a while to start (up to 1 hour).	
No sound	No connection to the power supply system.	Check the connections of the power supply unit.	12
	The audio plug is not properly connected.	Check the audio plug connection.	9
	The audio source is switched off.	Switch the audio source on.	–
	The volume of the analog audio source is either set to the minimum or is on mute.	Increase the volume on the audio source to at least a medium level/deactivate the muting function on the audio source.	–
	The audio cable is defective.	Replace the audio cable.	–
	The stethoset receiver is not correctly paired with the transmitter (e.g. additional stethoset receiver/receiver).	Pair the stethoset receiver with the transmitter again.	20
Occasional sound drop-outs	The stethoset receiver is out of the transmitter's range.	Reduce the distance between the stethoset receiver and the transmitter.	–
	The signal is shielded.	Remove obstacles between the transmitter and the stethoset receiver.	–
	There are interfering devices (e.g. WiFi router, Bluetooth devices or microwaves) in the vicinity.	Change the position of the transmitter or of the receiver. Separate the transmitter from other wireless devices by at least 50 cm/20".	8
Sound too low	The volume on the stethoset receiver is adjusted too low.	Increase the volume on the stethoset receiver.	16
	The volume of the analog audio source is adjusted too low.	Increase the volume of the analog audio source to at least a medium level (approx. 1 V <sub>rms</sub> ).	–

Problem	Possible cause	Possible solution	Page
Sound only on one ear	The balance is misadjusted.	Adjust the balance.	17
	The audio cable is not properly connected.	Check the audio plug connection.	9
	The TV has only a mono head-phone socket.	Use an adapter (mono to stereo jack socket) to connect the transmitter to the TV.	–
Sound is distorted	The audio cable is defective.	Replace the audio cable.	–
	The signal of the audio source is distorted.	Reduce the volume of the audio source.	–
	The volume on the stethoset receiver is adjusted too high.	Reduce the volume on the stethoset receiver.	16
The <i>Receiver status</i> LED lights up red	The rechargeable battery is almost empty.	Recharge the rechargeable battery.	13
The operating time decreases	The rechargeable battery is exhausted.	Have the rechargeable battery replaced by an authorized Sonova Consumer Hearing partner.	19
The stethoset receiver does not connect to the transmitter	The stethoset receiver is not paired with the transmitter.	Pair the stethoset receiver with the transmitter.	20
	The distance to the transmitter is too large.	Reduce the distance between the stethoset receiver and the transmitter.	–
	2 stethoset receivers are currently connected to the transmitter.	Up to 2 stethoset receivers can be simultaneously used with the transmitter.	–

If a problem occurs that is not listed in the above table or if the problem cannot be solved with the proposed solutions, visit the RS 2000 product page at [www.sennheiser-hearing.com](http://www.sennheiser-hearing.com). There you will find a current list of frequently asked questions (FAQ).

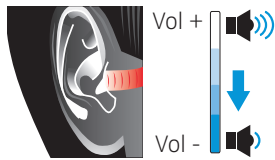
You can also contact your Sonova Consumer Hearing partner for assistance. To find a Sonova Consumer Hearing partner in your country, search at [www.sennheiser-hearing.com/service-support](http://www.sennheiser-hearing.com/service-support).

## Leaving the range of the transmitter



The range of the transmitter largely depends on environmental conditions such as wall thickness, wall composition etc. If you, and therefore the stethoset receiver, leave the range of the transmitter, the audio drops out occasionally at first before the connection breaks down completely. The *Receiver status* LED on the stethoset receiver flashes green (or red if the rechargeable battery is almost empty). The transmitter automatically switches off (standby) when there is no stethoset receiver connected. The *Transmitter status* LED goes off.

If a problem occurs ...



---

### WARNING

#### **Danger due to high volume levels!**

If you have exceeded the range of the transmitter and the connection is interrupted, the receiver remains switched on. If you increase the volume in this case, it will be higher when you re-enter the range of the transmitter than it was before the connection was interrupted.

- ▶ Do not change the volume under any circumstances when you are out of range of the transmitter.
- ▶ Take off the stethoset receiver before re-entering the range of the transmitter.

---

When you re-enter the range of the transmitter, the transmitter automatically switches on again and the connection is re-established.



# Specifications

## System, model: RS 2000

Transmission frequency	2.4 – 2.4835 GHz
Modulation	8-FSK Digital
Signal-to-noise ratio	typ. 85 dBA at 1 V <sub>rms</sub>
RF output power	max. 10 dBm
Audio latency	< 60 ms
Range	up to 50 m (line of sight)
Stethoset receivers that can be simultaneously connected to the transmitter	2
Temperature range	operation: +5 °C to +40 °C storage: –25 °C to +70 °C
Relative air humidity (non-condensing)	operation: 10 to 80 % storage: 10 to 90 %

## Stethoset receiver, model: RR 2000

Type	intra-aural, closed
Transducer system	dynamic, neodymium magnets
Ear pad material	silicone
Frequency response	15 Hz to 16 kHz
Sound pressure level	max. 125 dB at 1 kHz, 3 % THD
THD	< 0.5 % at 1 kHz, 100 dB SPL
Operating time	up to 9 hours
Charging time of rechargeable battery	up to 3 hours
Power supply	built-in BAP 800 lithium polymer rechargeable battery, 3.7 V, 350 mAh
Weight (incl. rechargeable battery)	approx. 60 g
Dimensions (switched off, W x H x D)	approx. 102 mm x 265 mm x 23 mm

## Transmitter, model: TR 2000

Audio connection	3.5 mm jack socket input voltage range: 0.15 to 4.0 V <sub>pk</sub>
Power supply	5 V $\pm$ 5%, 1 A
Power consumption	operation: typ. 1 W standby: $\leq$ 0.5 W (without charging)
Dimensions (W x H x D)	approx. 50 mm x 42 mm x 270 mm

**Power supply unit, model: NT 5-10AW**

Nominal input voltage/ current	100 – 240 V~ 300 mA
Power frequency	50 – 60 Hz
Nominal output voltage	5 V ===
Nominal output current	1 A
Temperature range	operation: 0 °C to +40 °C storage: -25 °C to +70 °C
Relative air humidity (non-condensing)	operation: 10 to 80 % storage: 10 to 90 %

# Manufacturer declarations

## Warranty

Sonova Consumer Hearing GmbH gives a warranty of 24 months on this product.

For the current warranty conditions, please visit our website at [www.sennheiser-hearing.com/warranty](http://www.sennheiser-hearing.com/warranty) or contact your Sonova Consumer Hearing partner.

## In compliance with the following requirements

### EU declaration of conformity



- ErP Directive (2009/125/EC)
- RoHS Directive (2011/65/EU)

Hereby, Sonova Consumer Hearing GmbH declares that the radio equipment type TR 2000, RR 2000 is in compliance with the Directive 2014/53/EU.

The full text of the EU declaration of conformity is available at the following Internet address:

[www.sennheiser-hearing.com/download](http://www.sennheiser-hearing.com/download).

### UK declaration of conformity



- The Ecodesign for Energy-Related Products and Energy Information (Amendment) (EU Exit) Regulations (2019)
- RoHS Regulations (2012)
- Radio Equipment Regulations (2017)

### Notes on disposal



- EU: WEEE Directive (2012/19/EU)
- EU: Battery Directive (2006/66/EC & 2013/56/EU)
- UK: WEEE Regulations (2013)
- UK: Battery Regulations (2015)

The symbol of the crossed-out wheeled bin on the product, the battery/rechargeable battery (if applicable) and/or the packaging indicates that these products must not be disposed of with normal household waste, but must be disposed of separately at the end of their operational lifetime. For packaging disposal, observe the legal regulations on waste segregation applicable in your country. Improper disposal of packaging materials can harm your health and the environment.

The separate collection of waste electrical and electronic equipment, batteries/rechargeable batteries (if applicable) and packagings is used to promote the reuse and recycling and to prevent negative effects on your health and the environment, e.g. caused by potentially hazardous substances contained in these products. Recycle electrical and electronic equipment and batteries/rechargeable batteries at the end of their operational lifetime in order to make contained recyclable materials usable and to avoid littering the environment.

If batteries/rechargeable batteries can be removed without damaging them, you are obliged to dispose of them separately (for the safe removal of batteries/rechargeable batteries, see the instruction manual of the product). Handle lithium-containing batteries/rechargeable batteries with special care, as they pose particular risks, such as the risk of fire and/or the risk of ingestion in the case of coin batteries. Reduce the generation of battery waste as much as possible by using longer-life batteries or rechargeable batteries.

Further information on the recycling of these products can be obtained from your municipal administration, from the municipal collection points, or from your Sonova Consumer Hearing partner. You can also return electrical or electronic equipment to distributors who have a take-back obligation. Herewith you make an important contribution to the protection of the environment and public health.



**Sonova Consumer Hearing GmbH**  
Am Labor 1, 30900 Wedemark, Germany  
[www.sennheiser-hearing.com](http://www.sennheiser-hearing.com)

Publ. 09/22, 570723/A03