

PLA 90

Counter Loop

SPECIAL NEEDS
COMPUTERS 
1-877-724-4922

USER MANUAL



Please read these operating instructions carefully. This describes how to set up the system correctly and explains all the system features.

Standard components

Please check if all following components are included:

- Portable induction loop system PLA 90 with integrated battery,
- Power supply unit
- 3 color signal strips
- 2 T-coil labels
- 4 rubber feet
- Operating instructions
- Warranty card

If any parts are missing, please contact your dealer immediately.

How it works

The PLA 90 uses its built-in microphone or an external microphone to pick up sounds and emits them via the integrated induction loop. The signals emitted in this way can be received by a hearing aid that is set to the “T” or “MT” position.

Setting up the PLA 90

The induction loop system is already completely installed and set up in the housing. All you have to do is to place the PLA 90 at the desired position between you and the person you are talking to and connect the power supply unit. Please note that the microphone on the back of the device should be facing the person speaking.

Switching the device on

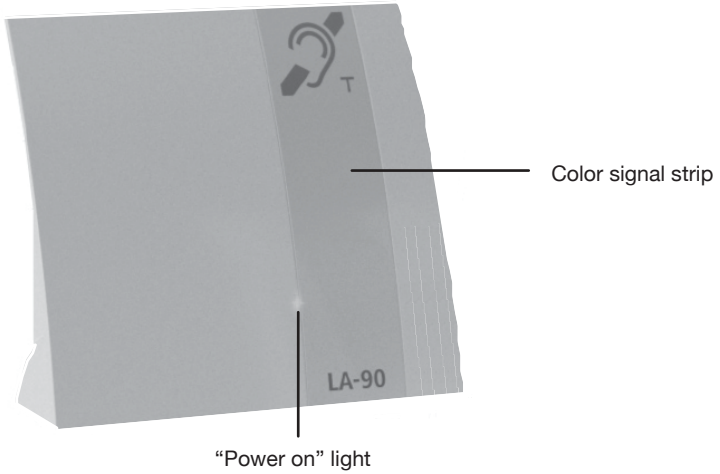
To switch the induction loop system on, press the “Power on“ button on the rear side of the device. Once the device is switched on, the “Power on” light on the rear of the device will light up green, and the “Power on” light on the front will light up blue.

Picking up/ emitting signals

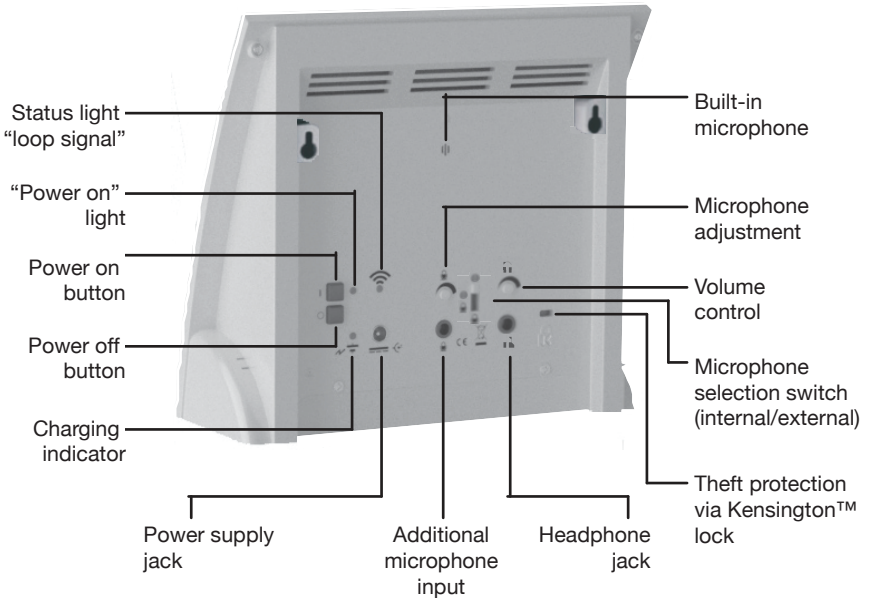
If sounds are picked up by the microphone on the back of the device or via an external microphone and emitted by the device as magnetic signals, the status light “loop signal” will flash orange.

Controls and Indicators

Front View



Rear View



Additional microphone input

(3.5 mm plug)

An external microphone can be connected to the additional microphone input.

Microphone selection switch

With the microphone selection switch you can choose the microphone which should record the sounds.

Switch position:

Up: internal microphone

Down: external microphone

Setting the sensitivity of the microphone input

With the control dial on the backside of the device you can adjust the sensitivity of the microphone input. This is useful if you want to connect a low-output microphone to the PLA 90.

Headphone jack (3.5 mm plug)

You can connect the following products to the Headphone jack:

- Under-the-chin receiver
- Unobtrusive earphones
- Lightweight headset
- Audio-Cable monaural
- Audio-Cable binaural
- Induction Link monaural
- Induction Link binaural

Volume control

The volume control adjusts the volume of the headphone jack.

Automatic switch off

The PLA 90 will switch off automatically after 2 minutes if no signal is received, from either the internal or external microphone.

Charging control light

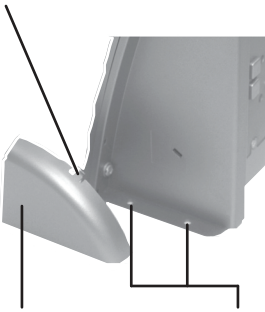
LED flashes red = Battery is in the process of being recharged

LED off = Battery is fully recharged

Permanent installation of the PLA 90

The PLA 90 can be screw-fastened through the lateral holes to a tabletop or other surfaces. The holes are located under the side covers. Remove the covers as shown in the picture below.

Retaining clip



Side cover

Holes for screw fastening

Switching the device off

To switch the induction loop system off, press the “Power off” button on the rear side of the device. The “Power on” control light goes off.

Power supply for the PLA 90

The PLA 90 can be operated using the built-in rechargeable battery or the power supply unit. If the battery is fully charged, the device can be used for up to 6 hours.

A depleted battery has to be recharged for approximately 3 hours until it reaches full capacity again. You can also use the PLA 90 while it is being charged, but please note that this will lengthen the time required to fully recharge the battery. The device can remain connected to the power supply for as long as desired.

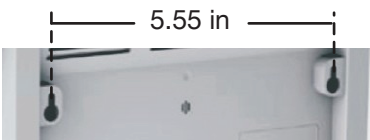
NOTE. The battery must remain in place, even when the PLA 90 is connected to AC Power.

Wall mounting

1. Screw in two screws (not included)

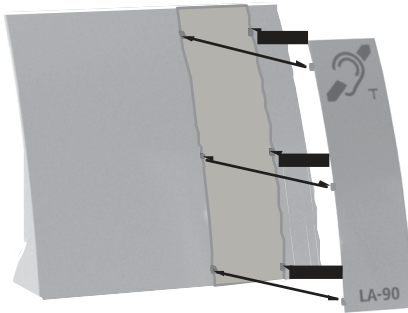
14.1 cm apart at the place you would like to mount the PLA 90 on the wall (see figure).

2. Now set the PLA 90 on the screws and slide it down slightly to secure it in place.



Changing the color signal strip

You can change the color signal strip of the PLA 90, as shown below.



Maintenance and care

The PLA 90 does not require any maintenance. If the unit becomes dirty, simply wipe it clean with a soft, damp cloth. Never use spirits, thinners or other organic solvents. Do not set up the unit where it will be exposed to full sunlight for long periods. In addition it must be protected against excessive heat, moisture and severe mechanical shock. Note: This product is not protected against splash water. Do not place any containers filled with water, such as flower vases, or anything with an open flame, such as a lit candle, on or near the product.

Specifications

Dimensions:	7-7/8" H x 7-1/4" W x 2-15/16" D (200 x 185 x 70 mm)
Weight:	1.4 lb (635 g) (with battery installed)
Power supply:	Input: 100-240 VAC, 50-60 Hz Output: 16 VDC
Rechargeable battery:	12 V NiMH, user-replaceable.
Operating time per charge:	Up to 6 hours
Battery charging time:	Approximately 3 hours
Output power:	10 W
Microphone Sensitivity:	Up to 60 dB \pm 3 dB
CE Certification (EU directives):	2002/95/EG RoHS 2002/96/EG WEEE 2004/108/EG EMC 2006/95/EG Low voltage

Compliance with the directives listed above is confirmed by the CE seal on the device. Specifications subject to change without notice.

Warranty

The PLA 90 is a very reliable product. Should a malfunction occur despite the unit having been set up and operated correctly, please contact your dealer.

The warranty covers the repair of the product and returning it to you free of charge during the warranty period. It is essential that you send in the product in its original packaging, so do not throw the packaging away. The warranty does not apply to damage caused by incorrect handling or attempts to repair the unit by people not authorized to do so (destruction of the seal on the unit). Repairs under warranty are only carried out providing the enclosed warranty card is filled out and returned to dealer; also a copy of the sales slip is required.

Unit disposal



Disposal of used electric and electronic units (applicable in the countries of the European Union and other European countries with a separate collection system). The symbol on the product or the packaging indicates that this product is not to be handled as ordinary household waste but has to be returned to a collecting point for the recycling of electric and electronic units. You protect health and environment by the correct disposal of this product. Material recycling helps to reduce the consumption of raw material. You will receive further information on the recycling of this product from your local community, your communal disposal company or your local dealer.

Rechargeable battery disposal



The rechargeable battery that comes with the device can be recycled.



Please dispose of this rechargeable battery in receptacles designed for that purpose or return it to a retail outlet. Dispose only of those batteries that have been completely discharged to ensure environmental protection.

WILLIAMS AV

info@williamsav.com / www.williamsav.com

800-843-3544 / INTL: +1-952-943-2252

©2022 Williams AV • All Rights Reserved

MAN 173E