

OLYMPUS®

**DIGITAL
VOICE RECORDER**

DS-2600

INSTRUCTIONS

EN 



Thank you for purchasing an Olympus digital voice recorder.
Please read these instructions for information about using the product correctly and safely.
Keep the instructions handy for future reference.

To ensure successful recording, we recommend that you test the record function and volume before use.

Table of contents

1 Getting started

Main features4

Names of parts5

Recorder5

Display6

Inserting the battery7

Charge the battery8

Charging directly via USB cable8

Charge using the docking station8

Using the lithium ion battery9

Power supply from USB cable or AC adapter10

Turn the power on11

Memory card11

Compatible memory cards11

Inserting and ejecting a memory card12

Setting time and date

[Time & date]13

Changing the time and date14

Operate the slide switch.....15

2 Basic operations

Recording16

New recording17

Overwrite recording18

Insert recording19

Recording monitor.....20

Playback21

Erasing23

Erasing files23

Partially erasing a file23

3 Advanced operations

Selecting folders and files.....25

Displaying file information25

Index marks.....26

How to use the menu.....27

Menu items.....29



File menu29



Recording menu29



LCD/ Sound menu30



Device menu31

Formatting the memory card

[Format]32

Table of contents

4 Managing files on your PC

DSS Player Software	34
Operating environment	35
Using online help	35
Connecting to your PC.....	36
Connecting to your PC using the USB cable.....	36
Connecting to your PC using the docking station	36
Disconnecting from your PC	37

5 Other information

Alarm message list.....	38
Troubleshooting	39
Device care	41
Accessories (optional)	41
Copyright and trademark information	42
Safety precautions.....	43
Specifications.....	47

Indications used in this manual

NOTE

Describes precautions and operations that should be absolutely avoided in using the voice recorder.

TIP

Describes useful information and hints that will help you getting the most out of your voice recorder.



Indicates reference pages describing details or related information.

This manual is the advanced version. Additionally, the basic version (Quick User Guide), which summarizes basic operation, is also included with this product.

1

2

3

4

5

Main features

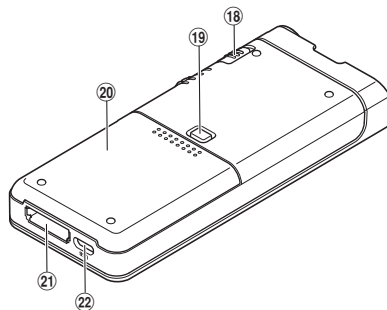
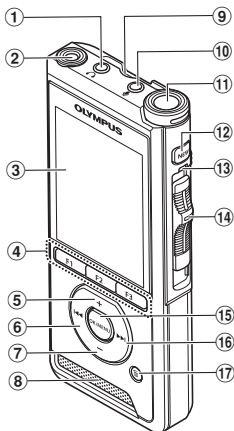
1

Main features

- Slide switch operation for ease of use and fast response.
- Three recording modes are available for selection: DSS, PCM, and MP3 (☞ P.29).
- Two microphone modes are provided: dictation and conference. Select the one that is the best match for your purpose or usage environment (☞ P.29).
- Lithium ion battery rechargeable via USB cable.
- This recorder is compatible with USB 2.0, enabling fast data transfer to a computer.
- Five folders and up to 200 files per folder, for a maximum of 1,000 recordings (☞ P.16).
- Large color LCD display.
- Index mark function which is useful to search particular points in the dictation files (☞ P.26).

Names of parts

Recorder



- ① (earphone) jack
- ② Built-in 2nd microphone (L)
- ③ Display
- ④ Programmable smart (F1,F2,F3) buttons
- ⑤ + (volume) button
- ⑥ ◀◀ (rewind) button
- ⑦ - (volume) button
- ⑧ Built-in speaker
- ⑨ SD card slot
- ⑩ (microphone) jack
- ⑪ Built-in main microphone (R)

- ⑫ **NEW** button
- ⑬ LED indicator light
- ⑭ Slide (●REC/■STOP/▶PLAY/◀◀REV) switch
- ⑮ **OK/MENU** button
- ⑯ ▶▶ (fast forward) button
- ⑰ (erase) button
- ⑱ **POWER (ON/OFF)** switch
- ⑲ Battery cover release button
- ⑳ Battery cover
- ㉑ Docking station connector
- ㉒ USB connector

1

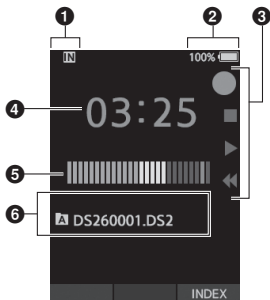
Names of parts

Names of parts

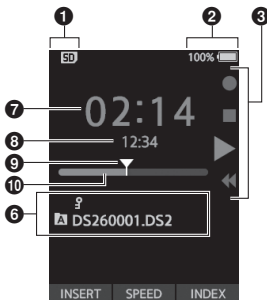
Display

1

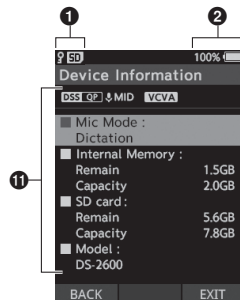
Names of parts



Display in the recording mode



Display in the playback mode



Display in the device information

1 Recording media indicator

2 Battery status indicator

3 Slide switch guide

[●]: Recording indicator

[■]: Stop indicator

[▶]: Playback indicator

[◀◀]: Fast-rewind indicator

4 Current recording time

5 Recording level meter

6 File information area

7 Current playback time

8 File length

9 Current position

10 Playback position bar

11 Device information area

Meanings of indicators

[IN]: Internal memory

[SD]: SD card

[SD]: SD card lock status

[]: Battery

[A]: Folder

[]: File lock

[DSS QP] [PCM ST] [MP3 128], etc.: Recording mode

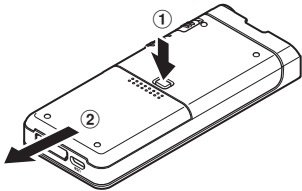
[HIGH] [MID] [LOW]: Microphone sensitivity

[VCVA]: VCVA (Variable Control Voice Actuator)

Inserting the battery

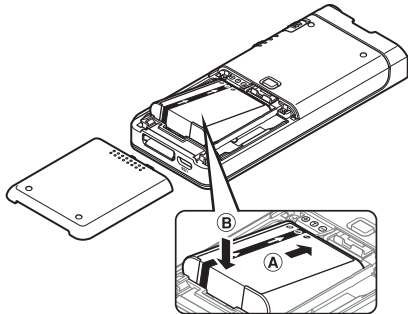
This recorder uses a lithium ion battery specified by Olympus (Li-92B). Do not use any other type of battery.

- 1 Lightly press down on the battery cover release button, then open the battery cover, as shown in the illustration below.



- 2 Insert the battery observing the correct polarity as shown in the illustration, then close the battery cover.

- Insert the battery by sliding in direction **A** while pushing down in direction **B**.




- The supplied battery is not fully charged. It is recommended to fully charge it before using the recorder for the first time or after the battery has been left unattended for a long time (☞ P.8).

Battery indicator

The battery indicator on the display will decrease as the battery loses power.



(100-20% White) (19-1% Red) (0%)

- When the battery indicator turns red, charge the battery as soon as possible. When the battery is too weak,  and **[Battery low]** will appear on the display and the recorder will shut down.

NOTE

- Turn off the recorder before removing the battery. Removing the battery while the recorder is still in use may cause malfunctions, file corruption or file loss.
- Remove the battery if you are not going to use the recorder for an extended period of time.
- After removing the battery, it may become necessary to re-set the time and date if you leave the battery out of the recorder for more than 1 minute or if you remove the battery right after loading it into the recorder.

Charge the battery

After loading the battery into the recorder, you can charge it by connecting the USB cable to the recorder.

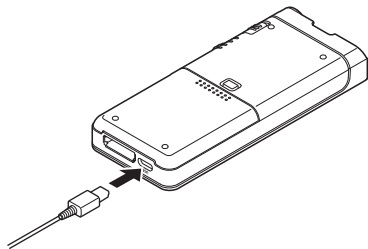
1

Charge the battery

Charging directly via USB cable

After loading the battery into the recorder, you can charge it by connecting the USB cable to the recorder.

Connect the USB cable to the recorder.



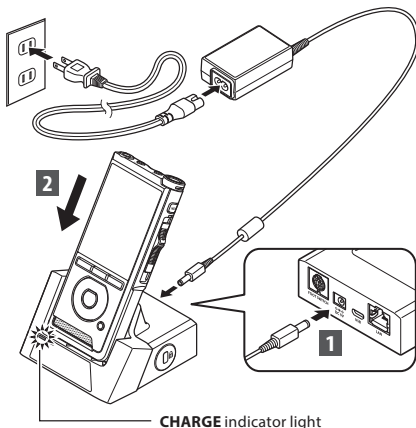
Charge using the docking station

The docking station and AC adapter are sold separately.

Charge using docking station and AC adapter

Fully charge the battery (approx. 2 hours) before use.

- 1 Connect the AC adapter to the docking station.**
- 2 Firmly press the recorder all the way into the docking station as shown in the illustration.**

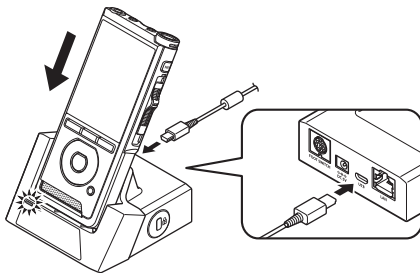


- The **CHARGE** indicator light turns on when charging starts, and turns off when charging is complete.

Charge using docking station and USB cable

Fully charge the battery (approx. 4 hours) before use. Verify that the recorder is in stop mode.

Connect the USB cable to the docking station.



Charge the battery

NOTE

- Charge the battery frequently during the first period of use. The battery will perform better after several charge/discharge cycles.
- Models of batteries which are different from the included one may not be charged.
- Charging the battery via the USB cable connection may not be successful depending on the power capacity of the USB port in your PC. Use the AC adapter instead.
- Do not set or remove the recorder from the docking station while operating.
- Do not charge the recorder through a USB hub.
- Do not attach or remove the battery if the USB cable is connected.

Using the lithium ion battery

This recorder uses a lithium ion battery specified by Olympus (Li-92B). Do not use any other type of battery.

Cautions concerning the battery

Read the following instructions carefully when you use the battery.

Discharging:

Rechargeable batteries self-discharge while not in use. Charge it regularly before use.

Battery life:

Over time, the rechargeable battery may gradually wear down. When the operating time becomes shorter even if the rechargeable battery is fully charged under the specified condition, replace it with a new one.

Operating temperature:

Rechargeable batteries are chemical products. Battery efficiency may vary even when operating within the recommended temperature range. This is an inherent nature of these products.

Recommended temperature range of use:

During operation:

0°C - 42°C / 32°F - 107.6°F

Charging:

5°C - 35°C / 41°F - 95°F

Using the battery outside the above temperature range may result in declining efficiency and shorter battery life.

NOTE

- When disposing the batteries, always observe the local laws and regulations. Contact your local recycling center for proper disposal methods.
- If battery is not fully discharged, protect it against short-circuiting (e.g. by taping the contacts) before disposal.

For customers in Germany:

Olympus has a contract with the GRS (Joint Battery Disposal Association) in Germany to ensure environmentally friendly disposal.

Power supply from USB cable or AC adapter

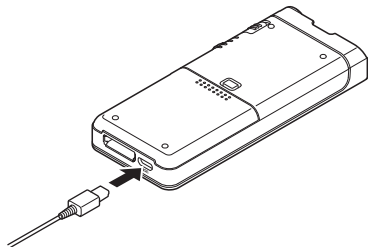
Use the AC adapter or USB cable when recording for extended period of time.

The docking station and AC adapter are sold separately.

1

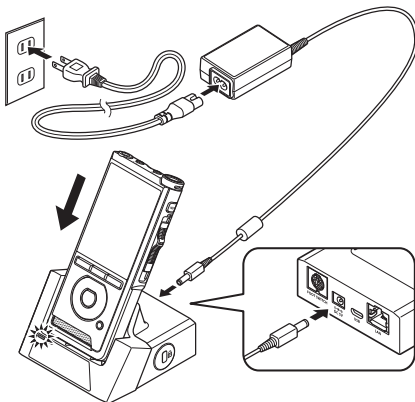
Use the USB cable

- 1 Verify that the recorder is in stop mode.
- 2 Connect the USB cable to the recorder.



Use the AC adapter

Plug the AC adapter into a household power outlet and connect the power plug to the recorder via the docking station. Always turn off the recorder before you connect power.

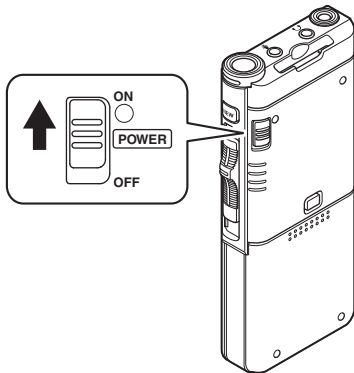


Detecting abnormal voltage

If the recorder detects a DC power voltage outside the allowed voltage range (4.4-5.5V), then **[Power supply error Remove power plug]** will appear on the display, and all operation will stop. The recorder will not be operable if abnormal voltage is detected. Use the AC adapter.

Turn the power on

Move the **POWER** switch to **ON** position to activate the recorder.



Memory card

The recorder has its own internal memory, and also supports standard SD/SDHC cards sold separately.

Compatible memory cards

The recorder supports memory card capacity from 4 GB up to 32 GB.

Memory cards compatibility

For a list of memory card compatible with the recorder, please visit the product homepage at the Olympus website applicable to your region or contact your Olympus reseller where you purchased the product.

NOTE

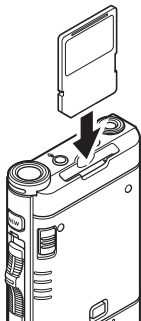
- **When initializing (formatting) a memory card, confirm that no necessary data is stored on the memory card beforehand. Initialization completely erases the existing data on the memory card.**
- Memory cards formatted (initialized) by another device, like a computer, may not be recognized. Be sure to format them with this recorder before use.
- The memory card has a service life. When reaching the end of its life, writing or erasing data on the memory card will be disabled. In this case, replace the memory card.
- If you use a PC card adapter compatible with the memory card to save or delete some data on the memory card, the maximum recording time on the memory card may be decreased. To recover the original recording time, initialize/format the memory card in the recorder.

Inserting and ejecting a memory card

Inserting a memory card

Insert the memory card fully into the card slot with the card facing the direction shown in the illustration below, until it clicks into place.

- Insert the memory card keeping it straight.



Memory card recognition

After inserting memory card, the message [SD card selected] will flash on the display while the recorder recognizes the memory card.

Ejecting a memory card

Push the memory card inward to unlock it and let it come out of the slot.

- Hold the memory card straight and pull it out.

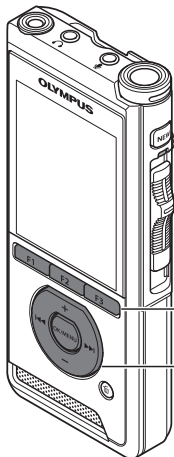
NOTE

- Inserting the memory card the wrong way or at an angle could damage the contact area or cause the memory card to jam.
- If the memory card is not inserted all the way into the slot, data may not be written properly.
- When an unformatted memory card is inserted into the card slot, the recorder will automatically display the format menu options (P.32).
- Use only memory cards formatted with the recorder (P.32).
- Never remove the memory card while the recorder is operating, as this may damage the data.
- After pushing the memory card inward to eject it, releasing your finger too quickly may cause the memory card to be ejected unexpectedly.
- The recorder may not properly recognize the memory card even when that memory card is compatible with it.
- The processing performance reduces in a memory card when you repeat writing and deleting. In this case, format the memory card (P.32).

Setting time and date [Time & date]

If you set the time and date beforehand, the information when the file is recorded is automatically stored for each file. Setting the time and date beforehand enables easier file management.

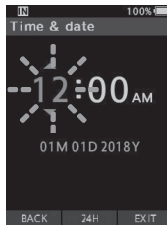
When you use the recorder for the first time after purchasing it, or when the battery has been inserted without the device being used for a long time, the [Set time & date] will appear.



F1, F2, F3 button

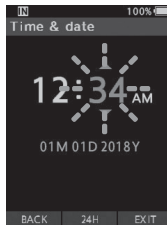
OK/MENU button
+, - button
▶▶, ◀◀ button

- 1 Press the ▶▶ or ◀◀ button to select the item to set.



Select the item from the "hour", "minute", "month", "day" and "year" with a flashing point.

- 2 Press the + or - button to set.



You can select between 12 and 24 hour display by pressing the F2 (24H) button while setting the hour and minute.

- You can select the order of the "Month", "Day" and "Year" by pressing the F2 (M/D/Y) button while setting them.
- 3 Press the OK/MENU button to complete the setting.
- The clock will start from the set date and time. Press the OK/MENU button according to the time signal.

TIP

- Moving the slide switch to a position other than STOP (■) while setting the time and date will cancel the time and date setting. The recorder will return to the previous time and date.

1

Setting time and date [Time & date]

Setting time and date [Time & date]

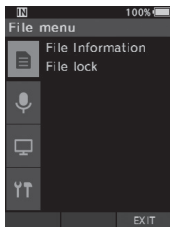
Changing the time and date

If the current time and date is not correct, set it using the procedure below.

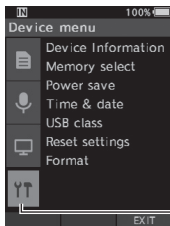
1

Setting time and date [Time & date]

- 1 When the file display screen appears, press the **OK/MENU** button while the voice recorder is in stop mode.



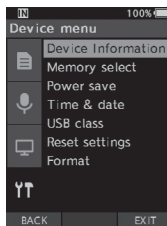
- 2 Press the **+** or **-** button to select [Device menu] tab.



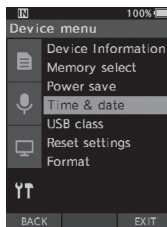
[Device menu] tab

- You can change the menu display by moving the settings tab cursor.

- 3 Press the **OK/MENU** or **▶▶** button.



- 4 Press the **+** or **-** button to select [Time & date].



- 5 Press the **OK/MENU** button.

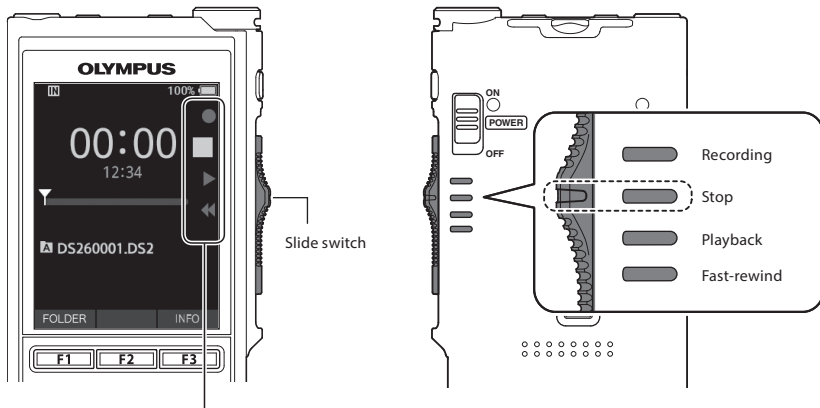
- The following steps are the same as Step 1 through Step 3 of “Setting time and date [Time & date]” (P.13).

- 6 Press the **F3 (EXIT)** button to exit the menu screen.

Operate the slide switch

Slide the slide switch on the side of the recorder up or down to perform the recording, stop, playback, and fast-rewind operations.

You can determine the current position at a glance even from the front because the slide switch works in conjunction with the slide switch guide on the screen.



The place indicated large in the slide switch guide is the current slide switch position.

The figure shows the stop position.

Recording

By default, the recorder has five folders, [A], [B], [C], [D], [E]. These five folders can be selectively used to distinguish the kind of recording. Up to 200 messages can be recorded per folder.

2

Recording

Record function

Before starting recording over a previously recorded file, the RECORD function can be set to the following:

- **Append:** Attaches the new recording to the end of the previously recorded file (☞ P.17).
- **Overwrite (default):** Overwrites and deletes part of the previously recorded file starting from the chosen position (☞ P.18).
- **Insert:** The recorded file will be inserted in the middle of the previously recorded file, starting from the chosen recording position. The original file will be kept (☞ P.19).

By default, the RECORD function is configured to record using the overwrite option. Recording will start from the current position of the existing file.

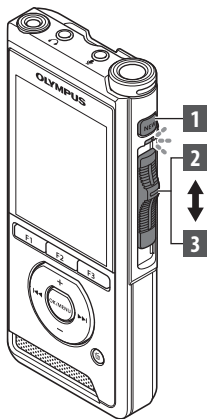
NOTE

- Append recording, overwrite recording, and insert recording are not available for MP3 files.

Recording related settings

Recording related settings can be configured to provide a suitable recording environment.

- Recording monitor (☞ P.20).
- Microphone mode [**Mic mode**] (☞ P.29).
- Microphone sensitivity [**Mic sense**] (☞ P.29).
- Recording modes [**Rec mode**] (☞ P.29).
- Using the Variable Control Voice Actuator [**VCVA**] (☞ P.29).



New recording

Create a new file to record in.

1 Press the **NEW** button to create a new file.

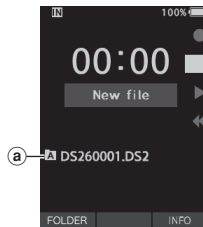
- **[New file]** appears in the display.
- Ⓐ New file name

2 Move the slide switch to the **REC (●)** position to start recording.

- The LED indicator lights in red. Turn the microphone in the direction of the source to be recorded.
- Ⓑ Recording elapsed time

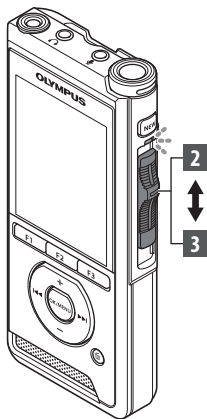
3 Move the slide switch to the **STOP (■)** position to stop recording.

- If you want to append additional recordings to the same file, move the slide switch to the **REC (●)** position again.



NOTE

- During recording, a beep will sound whenever the remaining recording time reaches 60, 30, and 10 seconds.
- When the remaining recording time reaches 60 seconds, the record indicator light will start flashing. The light will flash faster when the remaining recording time decreases from 30 to 10 seconds.
- **[Memory full]** or **[Folder full]** will be displayed when the memory or folder capacity is full.
 - Delete unnecessary files before recording any further (☞ P.23) or transfer dictation files to your PC.
 - Change the recording media at **[Memory select]** setting (☞ P.31) or change to a memory card with free space.

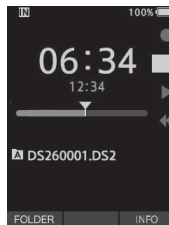


Overwrite recording

You can overwrite a previously recorded file starting from any point within the file. When using overwriting, the overwritten part will be erased.

1 Select and play the file you want to overwrite.

- Stop the playback at the point you want to start overwriting.



2 Move the slide switch to the REC (●) position to start overwriting.

- The LED indicator lights in red.

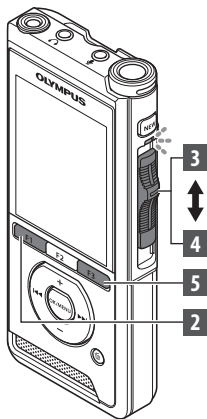
3 Move the slide switch to the STOP (■) position to stop overwriting.

- Ⓐ Total recording time of the file



NOTE

- A file's creation time and date will be updated to the time and date the file was last edited.
- You cannot select a recording mode different from the one set onto the original file.
- Overwrite recording is not available for MP3 files.



Insert recording

Additional recording can be inserted into previously recorded file.

1 Select and play the file you want to insert an additional recording into.

2 While playing the file, press the F1 (INSERT) button to insert an additional recording.

- [Insert Rec?] will appear on the display.

3 Move the slide switch to the REC (●) position to start inserting the additional recording.

- [Insert rec] will appear on the display. The LED indicator lights in blue.

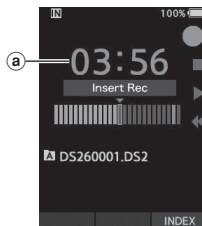
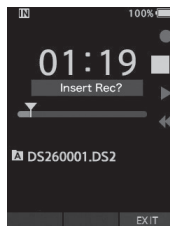
Ⓐ Elapsed time during insert recording

4 Move the slide switch to the STOP (■) position to stop inserting the additional recording.


5 Press the F3 (EXIT) button to stop insert recording.

NOTE

- The recording's time and date will be updated to the one of the latest recording inserted.
- You cannot select a recording mode different from the one set onto the original file.
- Insert recording is not available for MP3 files.

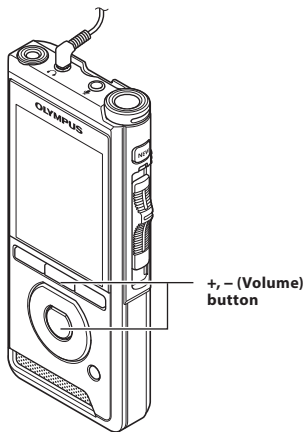


Recording monitor

It is possible to monitor your recording by listening to it even while the recording is in progress. In order to do so, insert the earphone plug into the  (earphone) jack and use the + or - buttons to control the volume level.

2

Recording monitor

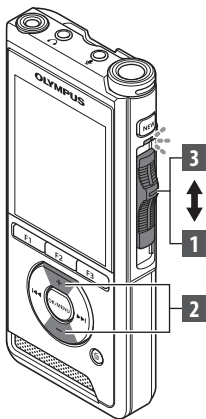


NOTE

- When connecting an earphone or an external microphone's plug, insert the plug all the way in as shown in the illustration above.
- To avoid irritation to the ear, insert the earphone after turning down the volume level.
- Do not place earphones near a microphone as this may cause feedback.
- The monitored audio may differ from the actually recorded audio.

Playback

You can playback a file starting from any point.



1 Select the file, then move the slide switch to the **PLAY (▶)** position to start playback.

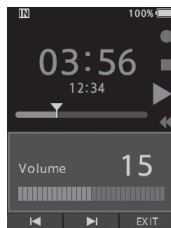
- The LED indicator lights in green.

a Elapsed playback time

2 Press the **+ –** button to adjust the volume.

- The volume can be adjusted within a range from **[00]** to **[30]**.

3 Move the slide switch to the **STOP (■)** position at any point you want to stop the playback.



2

Playback

Playback functions	Operation	How to cancel
Fast Forward (FF)	Press the ►► button once while in stop mode.	Move the slide switch to a position other than the STOP (■) position.
Rewind (REW)	Press the ◀◀ button once while in stop mode.	<ul style="list-style-type: none"> The recorder starts the operation of the set position. Press the OK/MENU button.
Cue (Cue)	Press and hold the ►► button while in stop or playback mode.	Release the button.
Review (Rev)	Press and hold the ◀◀ button while in stop or playback mode.	Release the button.
	Move the slide switch to the REV (◀◀) position.	Release the slide switch.
Playback Speed	Press the F2 (SPEED) button during playback. <ul style="list-style-type: none"> The playback speed will change at each press of the F2 (SPEED) button. Play (playback): Playback at normal speed. Slow play (slow playback): Playback speed slows down (-50%), and "Slow play" will be displayed. Fast play (fast playback): Playback speed becomes faster (+50%), and "Fast play" will be displayed.	


NOTE

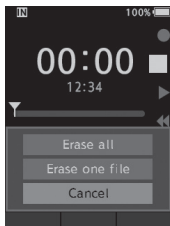
- If you press the ►► button once while fast-forwarding or twice while in stop mode, the recorder will stop at the end of the file (F.Skip).
- If you press the ◀◀ button once while rewinding or twice while in stop mode, the recorder will stop at the beginning of the file (B.Skip). If the ◀◀ button is pressed within 2 seconds, the recorder skips to the beginning of the previous file.
- If you press and hold the ►► button while fast forwarding (FF), the recorder will continue to skip forward.
- If you press and hold the ◀◀ button while rewinding (REW), the recorder will continue to skip backward.

Erasing

Erasing files

A selected file can be erased from a folder. Also, all files in a folder can be erased simultaneously.

- 1 Select the file you want to erase.
- 2 Press the  (erase) button.
- 3 Press the + button to select **[Erase all]** or **[Erase one file]**.



[Erase all]:

All files in a folder can be erased simultaneously.

[Erase one file]:

Erase one file.



- 4 Press the **OK/MENU** button.
- 5 Press the + button to select **[Start]**, then press the **OK/MENU** button.
 - The display changes to **[Erasing]** and erasing will start.
 - **[Erased]** is displayed when the file is erased.

NOTE


- An erased file cannot be restored.
- The erasing process may take up to 10 seconds. Do not interrupt this process or data may be damaged.
- Files cannot be erased in the following cases.
 - Files are locked (P.29).
 - Files stored on a locked memory card.

Partially erasing a file


Any unnecessary part of a file can be erased.

- 1 Playback the file you would like to partially erase.
- 2 Press the  (erase) button at the point you want to start erasing.
 - While playback continues, **[Start point]** will appear on the display.
- 3 In the position you want to end partial erase, press the  (erase) button again.



- The erase starting point (time) set in step 2 and the ending point (time) set in this step will be displayed alternatively for 8 seconds.
 - If you let the playback continue until the end of the file, that will be considered the ending point of the partial erase.
- 4 Press the  (erase) button to confirm the erasure.
 - The display changes to **[Partial erasing]** and erasing will start.
 - When **[Partial erase completed]** appears on the display, partial erase is complete.

NOTE

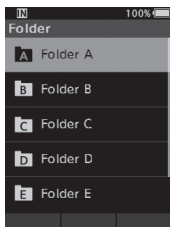
- If the  (erase) button is not pressed within 8 seconds after the **[Start point]** and **[End point]** are alternately displayed, the recorder will revert to play back status.
- MP3 files cannot be partially erased.
- An erased file cannot be restored.
- The erasing process may take up to 10 seconds. Do not interrupt this process or data may be damaged.
- Files cannot be partially erased in the following cases.
 - Files are locked (P.29).
 - Files are inside a locked memory card.

Advanced operations

Selecting folders and files

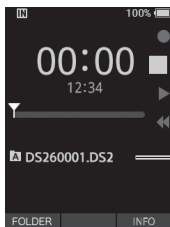
Changing folders

- 1 When the file display screen appears, press the **F1 (FOLDER)** button while the voice recorder is in stop mode.
 - The folder list screen will be displayed.
- 2 Press the **+** or **-** button to select the folder.



Selecting a file

- 1 While the file is being displayed, press the **▶▶** or **◀◀** button.

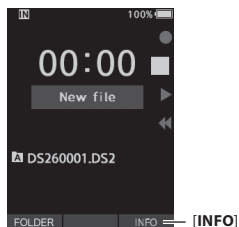


Current folder and file name

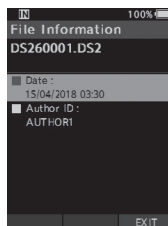
Displaying file information

The recorder can display a variety of information related to the current file.

- 1 Select the file containing the information to display.



- 2 Press the **F3 (INFO)** button.



- 3 Press the **F3 (EXIT)** button to exit the information screen.

3

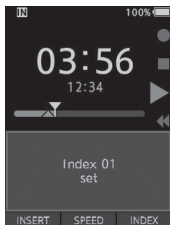
Selecting folders and files/Displaying file information

Index marks

Index marks can be placed into a file during recording or playback. Index marks are used to provide a quick and easy way to identify important or significant parts within the file.

Setting an index mark

- 1 While the recorder is in recording mode or in playback mode, press the **F3 (INDEX)** button.



Locating an index mark

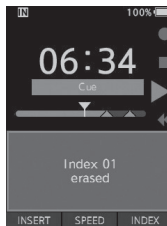
- 2 While playing back a file, press and hold the **▶▶** or **◀◀** button.



- The recorder stops for 1 second when it reaches the index mark.

Clearing an index mark

- 1 Select a file in which index marks you want to erase are contained.
- 2 Press the **▶▶** or **◀◀** button to select the index mark to erase.
- 3 While the index number appears for approximately 2 seconds on the display, press the **🗑** (erase) button.



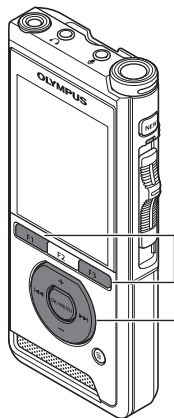
- The index mark is erased.

NOTE

- Up to 32 index marks can be set within a file.
- When a file is locked or set to read-only, or when the memory card is locked, index mark cannot be erased.

How to use the menu

Items in menus are categorized by tabs, so select a tab first and move to a desired item to quickly set it. You can set each menu item as follows.

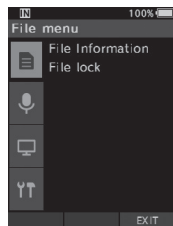


F1, F3 button

OK/MENU +, - button
▶▶, ◀◀ button

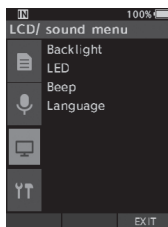
- 1 When the file display screen appears, press the OK/MENU button while the voice recorder is in stop mode.**

- The menu will appear on the display.



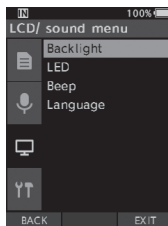
- 2 Press the + or – button to select the tab containing the item you want to set.**

- You can change the menu display by moving the settings tab cursor.



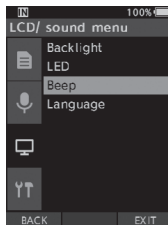
- 3 Press the OK/MENU or ▶▶ button to move the cursor to the desired setting item.**

- You can change the menu display by moving the settings tab cursor.



- 4 Press the + or – button to select the desired setting item.**

- Move to the menu item you want to set.



3

How to use the menu

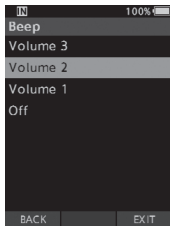
EN

27

How to use the menu

5 Press the **OK/MENU** or **▶▶▶** button.

- Move to the setting of the selected item.



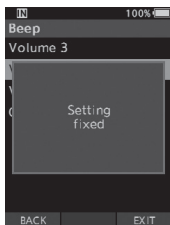
3

How to use the menu

6 Press the **+** or **-** button to change the setting.

7 Press the **OK/MENU** button to finalize the setting.

- You will be informed that the settings have been established via the screen.



- You can cancel the setting and return to the previous screen by pressing the **F1 (BACK)** or **◀◀** button instead of the **OK/MENU** button.

8 Press the **F3 (EXIT)** button to exit the menu screen.

Menu list

File menu

[File information]



[File lock]

Recording menu

[Mic mode]



[Mic sense]

[Rec mode]

[VCVA]

LCD/ sound menu

[Backlight]



[LED]

[Beep]

[Language]

Device menu

[Device Information]



[Memory select]

[Power save]

[Time & date]

[USB class]

[Reset settings]

[Format]

Menu items



File menu

File information


The recorder can display a variety of information related to the current file.

File lock

The File lock function allows you to prevent important files from being accidentally erased.

[Lock]:

Locks the file and prevents it from being erased.

 will appear on the display.

[Unlock]:

Unlocks the file and allows it to be erased.



Recording menu

Mic mode

To achieve high-quality audio recordings, use the microphone mode that suits the application.

[Dictation]:

Recommended for recording dictation.

[Conference]:

Records in high quality stereo which is useful when recording multiple number of users in a conference room.

Mic sense will be fixed to the Intelligent Auto Mode. In this mode, recording levels are automatically adjusted to match the volume of the sound source.

Micsense

You can select from the three microphone sensitivities to meet recording needs.

[High]:

The highest recording sensitivity. Suited to recording conferences.

[Mid]:

Suited to recording dictation.

[Low]:

The lowest recording sensitivity. Suited to recording close-talk.

Recmode

Three recording formats are available for selection: DS2, WAV, and MP3.

1 Select [DSS], [PCM] or [MP3].

2 Select the options.

When [DSS] is selected:

[DSS Pro QP] [DSS Pro SP]:

The recorded file will be DS2 format.

When [PCM] is selected:

[22.05kHz Stereo] [22.05kHz Mono]*:

The recorded file will be WAV format.

When [MP3] is selected:

[128kbps Stereo] [64kbps Mono]*:

The recorded file will be MP3 format.

* Mono recording

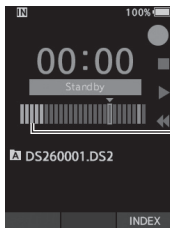
VCVA

The VCVA feature extends recording time and conserves memory by stopping recording during silent periods, which helps the playback to be more efficient. When the microphone senses that sounds have reached a preset threshold volume level, the built-in Variable Control Voice Actuator (VCVA) starts recording automatically, and stops when the volume drops below the threshold level.

1 Select [On].

2 Move the slide switch to the REC (●) position to start recording.

- When the sound volume is lower than the preset actuation sound level, recording automatically stops after 1 second approximately, and [Standby] flashes on the display. The record indicator light turns on when recording starts and flashes when recording pauses.



Level meter (varies according to the sound volume being recorded)

Adjust the start/stop actuation level:

While the recorder is in recording mode, press the ►► or ◀◀ button to adjust the actuation level.

- The VCVA level can be set to any of 15 different values.
- The higher the value is, the more sensitive the recorder can react to sounds. At the highest value, even the faintest sound will activate recording.
- The VCVA actuation level can be adjusted according to the ambient (background) noise.



Start level (moves to the right/left according to the set level)

- The start/stop actuation level also varies depending on the selected microphone sensitivity mode (see P.29).
- To ensure successful recordings, prior testing and adjustment of the start/stop actuation level is recommended.

LCD/ Sound menu

Backlight

By default, the display will remain lit for about 10 seconds when a button on the recorder is pressed.

1 Select [Lighting time], [Dim light time] or [Brightness].

2 Select the options.

When [Lighting time] is selected:

[5 seconds] [10 seconds] [30 seconds]
[1 minute] [2 minutes] [5 minutes]:

Set the backlight duration.

When [Dim light time] is selected:

[30 seconds] [1 minute] [2 minutes]
[5 minutes] [Always On]:

Set the time after which the backlight dims.

When [Brightness] is selected:

[01] [02] [03]:

Sets the brightness of the backlight when lit.

LED

You can set it so the record indicator light does not turn on.

[On]:

LED light will be set.

[Off]:

LED light will be canceled.

Beep

When the Beep is set to other than [Off], the recorder will beep in case of error.

[Volume 3] [Volume 2] [Volume 1]:

Beep is enabled. The higher the number is, the louder the volume.

[Off]:

Beep is disabled.

Language

You can set the language for the recorder's user interface.

[**Čeština**] [**Dansk**] [**Deutsch**] [**English**] [**Español**]
[**Français**] [**Italiano**] [**Nederlands**] [**Polski**]
[**Русский**] [**Svenska**]:

- The languages available may vary depending on the country/region where the product is purchased.



Device menu

Device information

The currently set recording mode, microphone sensitivity, and VCVA are indicated by icons, and you can also check [**Mic mode**], [**Internal memory**], [**SD card**] (when a SD card is inserted), [**Model**], [**Version**], and [**Serial No.**].

Memory select

When there is a SD card (sold separately) in the voice recorder, you can select whether to record on the internal memory or on the SD card.

- The recording media ([**IM**] or [**SD**]) will appear on the display.

Power save

By default, the recorder will enter into Power Save mode if not used for more than 10 minutes.

[**5 minutes**] [**10 minutes**] [**30 minutes**] [**1 hour**]:

Set the length of time before the recorder will enter into Power Save mode.

[**Off**]:

Disables this function.

- If any button is pressed, time count will restart.

Time & date

Setting the time and date beforehand enables easier file management.

For details, see "**Setting time and date [Time & date]**" (E3 P.13).

USB class

You can set the USB class of this recorder with a USB connection to [**Composite**] or [**Storage Class**].

[**Composite**]:

In the 3 classes of Storage, USB audio and human interface device, USB connection is possible.

While connected via USB in [**Composite**], the recorder can be used as the USB speaker and the USB microphone in addition to storage class.

[**Storage Class**]:

USB connection is possible in only storage class.

Reset settings

To reset the menu settings to their default values use [**Reset settings**] under [**Device menu**].

Format

Memory cards that have been used in non-Olympus devices, or memory cards that are not recognized by the recorder, must be formatted before they can be used with the recorder.

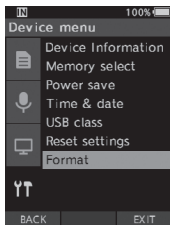
- Formatting the memory card will erase all the stored data, including locked files.

For details, see "**Formatting the memory card [Format]**" (E3 P.32).

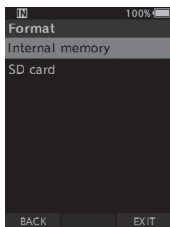
Formatting the memory card [Format]

Memory cards that have been used in non-Olympus devices, or memory cards that are not recognized by the recorder, must be formatted before they can be used with the recorder.

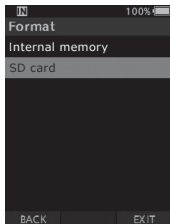
- 1 Select **[Format]** at the **[Device menu]** screen.



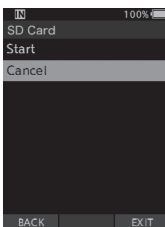
- 2 Press the **OK/MENU** or **▶▶▶** button.



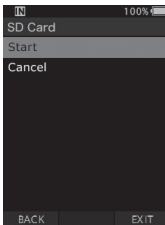
- 3 Press the **+** or **-** button to select **[SD card]** option.



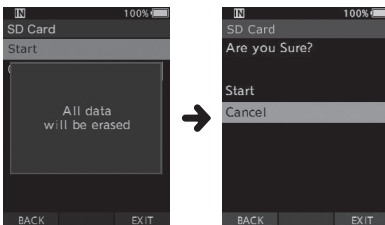
- 4 Press the **OK/MENU** or **▶▶▶** button.



- 5 Press the **+** button to select **[Start]** option.

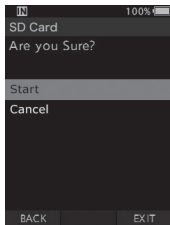


- 6 Press the **OK/MENU** button.



Formatting the memory card [Format]

- 7** Press the + button again to select **[Start]** option.



- 8** Press the OK/MENU button again to initiate the formatting process.

- **[Formatting!]** displays when formatting ends.

NOTE

- The time required to format a memory card varies according to the capacity of the memory card to be formatted. Do not interrupt the formatting process with the following actions. Doing so may damage the data or the memory card.
 - Remove the memory card.
 - Remove the battery.
- Formatting the memory card will erase all the stored data, including locked files.
- When an unformatted memory card is inserted, the format menu will be displayed automatically.
- Locked memory cards cannot be initialized.
- Memory cards will be formatted using quick format. Formatting the memory card will reset the information in file management, but the data inside the memory card may not be deleted completely. Be careful of data leakage when disposing or handing of the memory card. We recommend that you physically destroy the memory card when disposing of it.

Managing files on your PC

DSS Player Software

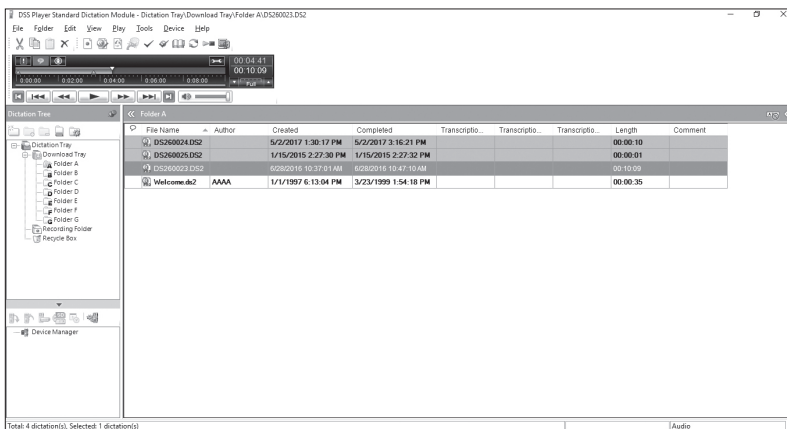
DSS Player is a software that provides basic dictation workflow functionality for individual use.

Some of the features of the DSS Player are:

- Automatic startup of the application by connecting the device.
- Automatic download of Dictation by connecting the device.
- Voice recorder's menu setting.
- Direct recording and editing of existing Dictation through Voice recorder's button.

4

DSS Player Software



In order to download the software, please access the website in your respective region.

(Europe, Middle east and Africa) <http://www.olympus.eu/sds-downloads/>

(The Americas) <https://www.olympusamericaprodictation.com/odms-t7>

(Oceania) <https://www.olympus.com.au/support/>

Operating environment

Windows

Operating System:

Microsoft Windows 7/8.1/10
(Standard installation)

PC:

Windows PC with at least one available USB port

Macintosh

Operating System:

Mac OS X 10.10 to 10.13
(Standard installation)

PC:

Apple Macintosh series PC with at least one available USB port

NOTE

- Even when the requirements for the operating environment are satisfied, updated versions, multiboot environments, self-modified PCs and other compatible machines will not be covered under the operational warranty.
- Macintosh version does not support voice recognition software.
- For information on the latest OS upgrades compatibility, visit the Olympus Web page at <http://www.olympus-global.com>

Using online help

For information on the DSS Player software usage and features, refer to the online help.

To start online Help:

Windows

- 1 While DSS Player software is running, select the [Help] menu, [Contents].**
- 2 While DSS Player software is running, press F1 on the keyboard.**

Macintosh

While DSS Player software is running, select [DSS Player Help] from the [Help] menu.

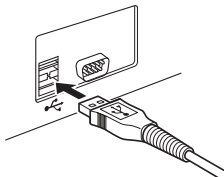
NOTE

- The Online help will be available after DSS Player software installation.

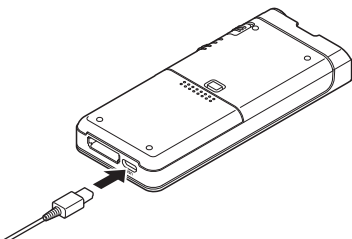
Connecting to your PC

Connecting to your PC using the USB cable

- 1 Boot the PC.
- 2 Connect the USB cable to the USB port of the PC.



- 3 Connect the USB cable to the connecting terminal on the bottom of the recorder.



- **[Remote (Composite)]** is displayed on the recorder if the USB cable is connected.

After connecting the recorder to your PC, it will be powered through the USB cable.

When connected to a PC, the memory card will be recognized by the PC as separate removable disk drives.

NOTE

- NEVER remove the memory card or disconnect the USB cable while the record indicator light is flashing. If you do, the data will be destroyed.

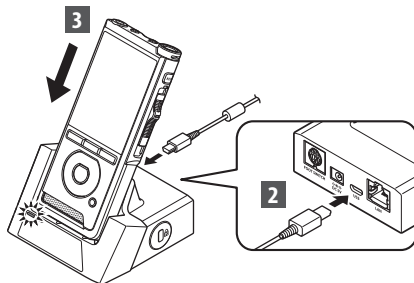
- Some PC's may not supply sufficient power and the recorder fails to connect. Refer to your PC user's manual regarding the USB port on your PC.
- Do not connect the recorder to a PC by using a USB hub. Make sure to connect to a USB port on your PC.
- Make sure to push the cable connector all the way in. Otherwise, the recorder may not operate properly.

Connecting to your PC using the docking station

The docking station and AC adapter are sold separately.

Place the recorder in the docking station

- 1 Connect the USB cable to the USB port of the PC.
- 2 Connect the USB cable to the docking station as shown in the illustration.
- 3 Set the recorder in the docking station.



- **[Remote (Composite)]** is displayed on the recorder if the USB cable is connected.
- If the AC adapter is connected as well, power will be supplied from the AC adapter.

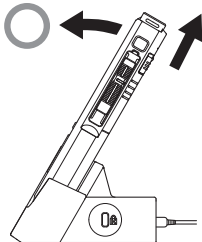
Disconnecting from your PC

Windows

- 1 Click [Eject] on the task bar located at the lower-right corner of the screen. Click [Eject DIGITAL VOICE RECORDER].
 - The drive letter will differ depending on the PC being used.
- 2 Confirm that the record indicator light turns off before disconnecting the USB cable.

Macintosh

- 1 Drag and drop the recorder's drive icon for this recorder displayed on the desktop to the Recycle Bin icon.
- 2 Confirm that the record indicator light turns off before disconnecting the USB cable.



NOTE

- NEVER remove the memory card or disconnect the USB cable while the record indicator light is flashing. If you do, the data will be destroyed.
- Never touch the contact points at the bottom of the docking station, as this may cause a bad connection.
- With a PC connected, the recorder cannot be operated with the Foot Switch. When connecting the recorder to a PC via the docking station, remove the Foot Switch.

Other information

Alarm message list

Message	Explanation	Action
[Battery low]	The remaining battery power is low.	Charge the battery (☞ P.8).
[Power supply error Remove power plug]	Voltage outside of the allowable limit has been detected.	Use the dedicated AC Adapter (☞ P.10).
[File locked]	Editing or deleting the file is not possible.	Unlock the file (☞ P.29).
[Further marking not possible]	The maximum number of Index marks has been reached (max 32 Index marks per file).	Erase index marks that are no longer required (☞ P.26).
[Memory full]	No remaining memory.	Erase unnecessary files or insert another memory card (☞ P.12, P.23).
[Folder full]	The maximum number of files has been reached (max 200 files per folder).	Erase unnecessary files (☞ P.23).
[Erasing error]	An error occurred while erasing.	Erase once again. When an erase error occurs, format the memory card (☞ P.32).
[Card error]	The memory card was not recognized correctly.	Remove and insert the memory card again (☞ P.12).
[Format error]	A formatting problem occurred.	Format again (☞ P.32).
[Memory error]	An internal memory error occurred.	Contact the Olympus Customer Support Center (☞ back cover).
[Insert SD card]	The recorder cannot find the memory card.	Insert a memory card (☞ P.12).
[Switch position error]	The position of the slide switch is incorrect.	Align the slide switch with the correct position (☞ P.15).
[Can't create the system file. Erase unnecessary file via PC.]	The management file cannot be created due to insufficient space on the memory card.	Connect the recorder to a computer and delete unnecessary files.

Troubleshooting

Symptom	Probable cause	Action
Nothing appears on the display.	The remaining battery power is low.	Charge the battery (☞ P.8).
	The recorder is turned off.	Turn the power on (☞ P.11).
	The recorder is currently in Power Save mode.	Press any button.
Unable to record.	The memory card does not have enough memory.	Erase unnecessary files or insert another memory card (☞ P.12, P.23).
	The memory card is unformatted.	Format the memory card (☞ P.32).
	The maximum number of files has been reached.	Change to any other folder (☞ P.25).
	The file is locked.	Unlock the file from the file menu (☞ P.29).
	The memory card is locked.	Unlock the memory card.
No playback tone heard.	The earphone is connected.	Unplug the earphones to use the internal speaker.
	The volume level is set to [00] .	Adjust the volume level (☞ P.21).
Unable to erase.	The file is locked.	Unlock the file from the file menu (☞ P.29).
	The memory card is locked.	Unlock the memory card.
Noise heard during playback.	Objects brushed against the voice recorder while recording.	_____
	The recorder was placed near a mobile phone or fluorescent lamp while recording or during playback.	Avoid using the recorder near cell phones or fluorescent lamps.
Recording level too low.	The microphone sensitivity is too low.	Set the microphone sensitivity to the conference mode and try again (☞ P.29).

Troubleshooting

Symptom	Probable cause	Action
Unable to set index marks.	The maximum number of index marks has been reached.	Erase unnecessary index marks (☞ P.26).
	The file is locked.	Unlock the file from the file menu (☞ P.29).
	The memory card is locked.	Unlock the memory card.
Cannot find the recorded file.	Wrong recording media or folder.	Switch to the correct recording media or folder (☞ P.25, P.16, P.31).
Cannot connect to a PC.	Sometimes a connection cannot be made with some PCs running Windows XP, Vista, 7, 8 or 8.1.	You need to change the PC's USB settings. See DSS Player software online help for details (☞ P.35).

5

Troubleshooting

Device care

- **Exterior**

Wipe gently with a soft cloth. If the device is very dirty, soak the cloth in mild soapy water and wring well. Wipe the device with the damp cloth and then wipe it with a dry cloth.

- **Display**

Wipe gently with a soft cloth.

NOTE

- Do not use benzene, alcohol or other strong solvents, or chemical cleaning cloths.

Accessories (optional)

- **External microphone: ME15**

A lavalier omni-directional microphone that clips to clothing. Used to record your own voice or people near you.

- **PC transcription kit: AS-2400**

The AS-2400 transcription kit provides you with a Foot Switch, a headset and DSS Player software for easy transcription of DSS recordings.

- **Telephone pickup: TP8**

Earphone type microphone can be plugged into your ear while phoning. The voice or conversation over the phone can be clearly recorded.

- **Lithium ion battery: LI-92B**

This lithium ion rechargeable battery is manufactured by Olympus. It is best paired with the UC90 battery charger.

- **AC adapter (5V): A517 & F-5AC**

In order to charge the battery, the docking station (CR21) will be necessary (optional).

- **Docking station: CR21 & CR15**

The CR21/CR15 is designed for Olympus DS-9500/DS-9000/DS-2600.

Use with only compatible Olympus products.

Copyright and trademark information

- The contents of this document may be changed in the future without advanced notice. Contact our Customer Support Center for the latest information relating to product names and model numbers.
- The illustration of the screen and the recorder shown in this manual may differ from the actual product. The utmost care has been taken to ensure the integrity of this document, but if you find a questionable item, error or omission, please contact our Customer Support Center.
- Any liability for passive damages or damage of any kind occurred due to data loss incurred by a defect of the product, repair performed by the third party other than Olympus or an Olympus authorized service station, or any other reason is excluded.

Trademarks and registered trademarks

- SD and SDHC are trademarks of SD Card Association.

All other brand or product names in this manual are the trademarks or registered trademarks of their respective owners.



Safety precautions

Before using your new recorder, read this manual carefully to ensure that you know how to operate it safely and correctly. Keep this manual in an easily accessible location for future reference.

The warning symbols indicate important safety related information. To protect yourself and others from personal injury or damage to property, it is essential that you always read the warnings and information provided.



Danger

If the product is used without observing the information given under this symbol, serious injury or death may result.



Warning

If the product is used without observing the information given under this symbol, injury or death may result.



Caution

If the product is used without observing the information given under this symbol, minor personal injury, damage to the equipment, or loss of valuable data may result.

Convention used in this manual

- In this manual, SD and SDHC cards are generally referred to as a “memory card”.
- The word “ODMS” is used to refer to the Olympus Dictation Management System in Windows environment.
- The word “DSS Player” is used to refer to the DSS Player for Mac in Apple Macintosh environment.
- This manual shows the English on screen display in the illustrations and explanations.

You can select the display language for this recorder. For details, see “Language” (P.31).

Caution for usage environment

- To protect the high-precision technology contained in this product, never leave the recorder in the places listed below, no matter if in use or storage:
- Places where temperatures and/ or humidity are high or go through extreme changes. Direct sunlight, beaches, locked cars, or near other heat sources (stove, radiator, etc.) or humidifiers.
- Near flammable items or explosives.
- In wet places, such as bathrooms or in the rain.
- In places prone to strong vibrations.
- Never drop the recorder or subject it to severe shocks or vibrations.
- The recorder may malfunction if it is used in a location where it is subject to a magnetic/ electromagnetic field, radio waves, or high voltage, such as near a TV set, microwave, video game, loud speakers, large monitor unit, TV/radio tower, or transmission towers. In such cases, turn the recorder off and on again before further operation.

Safety precautions

- Avoid recording or playing back near cellular phones or other wireless equipment, as they may cause interference and noise. If you experience noise, move to another place, or move the recorder further away from such equipment.
- Do not use organic solvents such as alcohol and lacquer thinner to clean the unit.

Warning regarding data loss

- Recorded content in memory may be destroyed or erased by operating mistakes, unit malfunction, or during repair work. It is recommended to back up and save important content to other media such as a computer hard disk.
- Any liability for passive damages or damage of any kind occurred due to data loss incurred by a defect of the product, repair performed by the third party other than Olympus, an Olympus authorized service station or any other reason is excluded from the Olympus liability.

Handling the recorder



Warning

- Keep the recorder out of the reach of children and infants to prevent the following dangerous situation that could cause serious injury:
 1. Accidentally swallowing the battery, memory cards or other small parts.
 2. Accidentally being injured by the moving parts of the recorder.
- Do not disassemble, repair or modify the unit yourself.

- Use SD and SDHC memory cards only. Never use other types of memory cards. If you accidentally insert another type of memory card into the recorder, contact an authorized distributor or service center. Do not try to remove the memory card by force.
- Do not operate the unit while operating a vehicle.



Caution

- Stop using the recorder immediately if you notice any unusual odors, noise, or smoke around it.
- Never remove the battery with bare hands, which may cause a fire or burn your hands.
- Do not leave the recorder in places where it may be subject to extremely high temperatures. Doing so may cause parts to deteriorate and, in some circumstances, cause the recorder to catch fire. Do not use the charger or AC adapter if it is covered. This could cause overheating, resulting in fire.
- Handle the recorder with care to avoid getting a low-temperature burn.
- When the recorder contains metal parts, overheating can result in a low-temperature burn. Pay attention to the following:
 - When used for a long period, the recorder will get hot. If you hold on to the recorder in this state, a low-temperature burn may be caused.
 - In places subject to extremely cold temperatures, the temperature of the recorder's body may be lower than the environmental temperature. If possible, wear gloves when handling the recorder in cold temperatures.

Battery handling precautions



Danger

- The recorder uses a special lithium ion battery from Olympus. Charge the battery with the specified AC adapter or charger. Do not use any other AC adapters or chargers.
- The battery should never be exposed to flame, heated, short-circuited or disassembled.
- Never heat or incinerate battery.
- Take precautions when carrying or storing batteries to prevent them from coming into contact with any metal objects such as jewelry, pins, fasteners, etc.
- To prevent causing battery leaks or damaging their terminals, carefully follow all instructions regarding the use of batteries. Never attempt to disassemble a battery or modify it in any way, solder, etc.
- If battery fluid gets into your eyes, flush your eyes immediately with clear, cold running water and seek medical attention immediately.



Warning

- Keep batteries dry at all times.
- If rechargeable batteries have not been recharged within the specified time, stop charging them and do not use them.
- Do not use a battery if it is cracked or broken.
- Never subject batteries to strong shocks or continuous vibration.
- If a battery leaks, becomes discolored or deformed, or becomes abnormal in any other way during operation, stop using the recorder.

- If a battery leaks fluid onto your clothing or skin, remove the clothing and flush the affected area with clean, running cold water immediately. If the fluid burns your skin, seek medical attention immediately.
- Keep batteries out of the reach of children.
- If you notice anything unusual when using this product such as abnormal noise, heat, smoke, or a burning odor:
 1. Remove the battery immediately while being careful not to burn yourself, and;
 2. Call your dealer or local Olympus representative for service.
- Do not use the USB power supply via the car cigarette lighter socket or the self-modified power supply. It may cause overheating, fire, electric shock or malfunctions.



Caution

- The bundled/included rechargeable battery is exclusively for use with Olympus digital voice recorder DS-2600.
- There is a risk of explosion if the battery is replaced with the incorrect battery type.
- Dispose of the used battery following the instructions.
- Please recycle batteries to help save our planet's resources. When you throw away dead batteries, be sure to cover their terminals and always observe local laws and regulations.
- Always charge a rechargeable battery when using it for the first time, or if it has not been used for a long period.
- Rechargeable batteries have limited lifetime. When the operating time becomes shorter even if the rechargeable battery is fully charged, replace it with a new one.

LCD monitor

- The LCD used for the monitor is made with high-precision technology. However, black spots or bright spots of light may appear on the LCD monitor. Due to its characteristics or the angle at which you are viewing the monitor, the spot may not be uniform in color and brightness. This is not a malfunction.

Memory card



Warning:

- Do not touch the memory card contacts. This may damage the memory card.
- Do not place the memory card in locations with static electricity.
- Store the memory card in a location that is out of the reach of children. In case of accidental ingestion, consult a physician immediately.
- Even when formatting or erasing are performed, only the file management information of the internal memory and/or memory card is updated and the recorded data is not completely erased. When disposing of the voice recorder or a memory card, be sure to destroy it, format and record silence until the recording time runs out, or perform a similar operation in order to prevent the leakage of personal information.

Specifications

General points

Recording format

DSS2 (Digital Speech Standard Pro)
Linear PCM (Pulse Code Modulation)
MP3 (MPEG-1 Audio Layer3)

Storage

Internal NAND FLASH memory: 2 GB
SD/SDHC card: Supports 4 GB to 32 GB

* Some recording media memory capacity is used as a management area, so the actual usable capacity will always be slightly less than the displayed capacity.

Sampling frequency

DSS format

DSS Pro QP	16 kHz
DSS Pro SP	12 kHz

PCM format

22.05kHz Stereo	22.05 kHz
22.05kHz Mono	22.05 kHz

MP3 format

128kbps Stereo	44.1 kHz
64kbps Mono	44.1 kHz

Display

Size: 2.4 inches
Resolution: 240 × 320 pixels
Type: TFT color LCD

Speaker

Built-in 11 × 15 mm dynamic speaker

Maximum working output

320 mW (8 Ω speaker)

Maximum headphone output

≤ 150 mV (conforms to EN 50332-2)

MIC jack

∅ 3.5 mm impedance 2 kΩ

MIC jack

∅ 3.5 mm impedance 8 Ω or more

Power source

Standard voltage: 3.6 V
Battery: Lithium-ion battery (LI-92B)
External power supply: USB connection,
AC adapter (A517, F-5AC) (DC5V)

External dimensions

120.8 mm × 49.8 mm × 18.6 mm
(Not including largest projection)

Weight

116.5 g (including battery)

Operating temperature

During operation: 0 °C to 42 °C (32 °F to 107.6 °F)
Charging: 5 °C to 35 °C (41 °F to 95 °F)

Overall frequency response

When recording from microphonejack

DSS format

DSS Pro QP	200 Hz to 7000 Hz
DSS Pro SP	200 Hz to 5000 Hz

PCM format

22.05kHz Stereo	50 Hz to 8000 Hz
22.05kHz Mono	50 Hz to 8000 Hz

MP3 format

128kbps Stereo	50 Hz to 15000 Hz
64kbps Mono	50 Hz to 13000 Hz

When recording with built-in microphone

50 Hz to 15000 Hz

(The upper and lower limit values of the frequency response depend on each recording format and microphone mode.)

Specifications

5

Specifications

Guide to battery life

The following values are for reference only.

■ During recording mode (Built-in microphone):

DSS format

DSS Pro QP	Approx. 48 h
DSS Pro SP	Approx. 52 h

PCM format

22.05kHz Stereo	Approx. 54 h
22.05kHz Mono	Approx. 56 h

MP3 format

128kbps Stereo	Approx. 52 h
64kbps Mono	Approx. 55 h

■ During playback mode (Earphone playback):

All mode: Approx. 50 h

Guide to recording times

The following values are for reference only.

DSS format

Recording media	DSS Pro QP	DSS Pro SP	
Internal memory 2 GB	163 h	334 h	
SD card	32 GB	2350 h	4810 h
	16 GB	1170 h	2410 h
	8 GB	585 h	1200 h

PCM format

Recording media	22.05kHz Stereo	22.05kHz Mono	
Internal memory 2 GB	6.5 h	13 h	
SD card	32 GB	94 h	188 h
	16 GB	47 h	94 h
	8 GB	23.5 h	47 h

MP3 format

Recording media	128kbps Stereo	64kbps Mono	
Internal memory 2 GB	36 h	72 h	
SD card	32 GB	520 h	1040 h
	16 GB	260 h	520 h
	8 GB	130 h	260 h

- The above are the standard times, and the available recording time will vary depending on the card.
- Available recording time may be shorter if many short recordings are made.
- Total recording time of several files. The maximum recording time per file is 99 hours 59 minutes.

Specifications and design are subject to change without notice.
Battery life is measured by Olympus. It varies greatly according to the conditions of use.

For customers in North America

FCC Notice

- This equipment has been tested and found to comply with the limits for a Class B digital device, pursuant to Part 15 of the FCC Rules. These limits are designed to provide reasonable protection against harmful interference in a residential installation.
- This equipment generates, uses, and can radiate radio frequency energy and, if not installed and used in accordance with the instructions, may cause harmful interference to radio communications.
- However, there is no guarantee that interference will not occur in a particular installation. If this equipment does cause harmful interference to radio or television reception, which can be determined by turning the equipment off and on, the user is encouraged to try to correct the interference by one or more of the following measures:
 - Reorient or relocate the receiving antenna.
 - Increase the separation between the equipment and receiver.
 - Connect the equipment into an outlet on a circuit different from that to which the receiver is connected.
 - Consult the dealer or an experienced radio/TV technician for help.
 - Use only Olympus' supplied cable or AC adapter when you connect the applicable equipment to an external device or a power outlet.

FCC Caution

Changes or modifications not expressly approved by the party responsible for compliance could void the user's authority to operate the equipment.

For customers in USA

Declaration of Conformity

Model Number: DS-2600

Trade Name: OLYMPUS

Responsible Party: OLYMPUS AMERICA INC.

Address: 3500 Corporate Parkway, P.O. Box 610, Center Valley, PA 18034-0610, U.S.A.

Telephone Number: 484-896-5000

Tested To Comply With FCC Standards

FOR HOME OR OFFICE USE

This device complies with Part 15 of FCC Rules.

Operation is subject to the following two conditions:

- (1) This device may not cause harmful interference, and
- (2) This device must accept any interference received, including interference that may cause undesired operation of this device.

For customers in canada

CAN ICES-3 (B)/NMB-3 (B)

For customers in Europe

Professional dictation devices from Olympus are distributed via specially trained and educated partners.

Therefore please **contact your local Certified Olympus Partner for Professional Audio Systems** to get highly qualified support in your language.

Find your local partner with our Dealer

Locator on www.olympus-europa.com/voice

Telephone support (only English speaking):

United Kingdom: 0845 521 8588

(Monday - Friday 8 am - 5 pm GMT)

Republic of Ireland: 00 44 1582 483320

(Monday - Friday 8 am - 5 pm GMT)

Europe, Middle East, Russia & Africa:

00 800 7000 1000*

(Monday - Friday 9 am - 6 pm CET)

E-mail (only English speaking)

help@opdsupport.com

Hardware repair

Please contact our customer support center below

audio.repair.uk@olympus.eu

Free number: 00 800 - 67 10 84 00*

Charged number +49 40-237 73 899

(Monday – Thursday 8 am - 5 pm, /

Friday 8 am - 3:30 pm GMT)

* 00800-calls are free of charge.

Only valid for Germany, Austria, Netherlands, Belgium, France, Italy, Denmark, Switzerland, Portugal, Norway, Sweden, Finland, Spain, Czech,

Republic, Hungary, Poland, Iceland, Bulgaria, Israel, Latvia, Lithuania, Estonia, Russia, South Africa. Some phone service providers do not permit access to 00800 numbers or require an additional prefix. Charges may apply here. Please contact your service provider directly for more details.



The “CE” mark indicates that this product complies with the European requirements for safety, health, environment and customer protection. CE-mark products are for sale in Europe.



This symbol [crossed-out wheeled bin WEEE Annex IV] indicates separate collection of waste electrical and electronic equipment in the EU countries. Please do not throw the equipment into the domestic refuse. Please use the return and collection systems available in your country for the disposal of this product.



This symbol [crossed-out wheeled bin Directive 2006/66/EC Annex II] indicates separate collection of waste batteries in the EU countries. Please do not throw the batteries into the domestic refuse. Please use the return and collection systems available in your country for the disposal of the waste batteries.

OLYMPUS®

OLYMPUS CORPORATION

2951 Ishikawa-machi, Hachioji-shi, Tokyo 192-8507, Japan
<http://www.olympus.com>

OLYMPUS AMERICA INC.

3500 Corporate Parkway, P.O. Box 610, Center Valley, PA 18034-0610, U.S.A.
E-mail: Audio@olympus.com
<http://www.olympusamerica.com>

OLYMPUS EUROPA SE & CO. KG

(Premises) Wendenstrasse 14 – 18, 20097 Hamburg, Germany
Tel. +49 40 - 23 77 3-0
(Goods delivery) Modul H, Willi-Bleicher Str. 36, 52353 Düren, Germany
(Letters) Postfach 10 49 08, 20034 Hamburg, Germany
<http://www.olympus-europa.com>

OLYMPUS AUSTRALIA PTY LTD.

Level 4, 97 Waterloo Road, Macquarie Park NSW 2113
Tel: +61 2 9886 3992
<http://www.olympus.com.au>