



Iso Analytics, Inc.

6135 NW 167 Street
Suite E 15
Miami Lakes, FL 33015
(754) 736-6431

ISO ANALYTICS testing@isoanalytics.org



Analysis Report

Client **BAM**

Batch # **ALD800**

Test Reg State **Florida**

Batch Date **2/28/2022**

Production Facility **Delcann Oils**

Extracted from **CBD**

Production Date **3/1/2022**

Sample Name **Delta 10 SUPER DIESEL Cartridge**

Order Date **3/1/2022**

Sample Type **Distillate**

Date Received **3/2/2022**

Sample ID **IA-90023**

Lab Batch Date **3/2/2022**

Initial Gross Weight **1g**

Date Completed **3/3/2022**



Product Image

Potency Summary

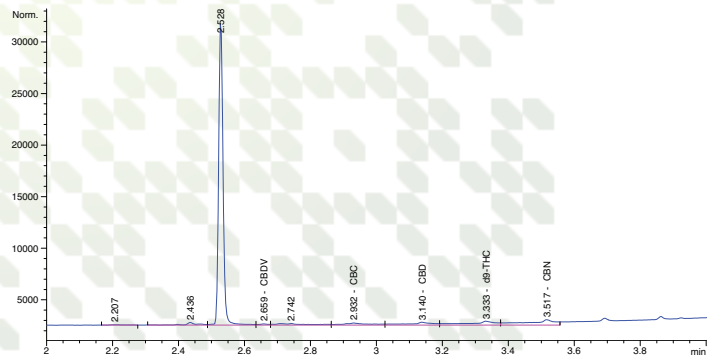
Total Delta 8 38.16%	Total THC None Detected
Total Delta 9 None Detected	Total Delta 10 53.33%
Total CBG None Detected	Total CBD None Detected
Total CBN 3.76%	Total Cannabinoids 95.25%

Cannabinoid Profile Tested by GC/FID

Potency 12 Test

Analyte	LOD %	LOQ %	Result (mg/g)	Result (%)
Δ8-THC	0.000	0.001	381.6	38.16
Δ9-THC	0.000	0.001	0.000	<LOQ
Δ10-THC	0.000	0.001	533.3	53.33
CBC	0.000	0.001	0.000	<LOQ
CBD	0.000	0.001	0.000	<LOQ
THCV	0.000	0.001	0.000	<LOQ
THCA-A	0.000	0.001	0.000	<LOQ
CBN	0.000	0.001	37.600	3.76
CBGA	0.000	0.001	0.000	<LOQ
CBG	0.000	0.001	0.000	<LOQ
CBDV	0.000	0.001	0.000	<LOQ
CBDA	0.000	0.001	0.000	<LOQ

Chromatogram



ND = Not Detected; NT = Not Tested; LOD = Limit of Detection;
LOQ = Limit of Quantitation; RL = Reporting Limit; Δ = Delta;
Total Δ9-THC = Δ9-THCA * 0.877 + Δ9-THC; Total CBD = CBDA * 0.877 + CBD

ISO ANALYTICS, INC.

This sample has been tested by Iso Analytics, Inc. using valid testing methodologies and a quality system. Values reported relate only to the sample tested. Iso Analytics, Inc. makes no claims as to the efficacy, safety or other risks associated with any detected or non-detected levels of any compounds reported herein. This Report shall not be reproduced except in full, without the written approval of Iso Analytics, Inc.

Charles Lewis, PhD
Chief Scientist
Iso Analytics, Inc.