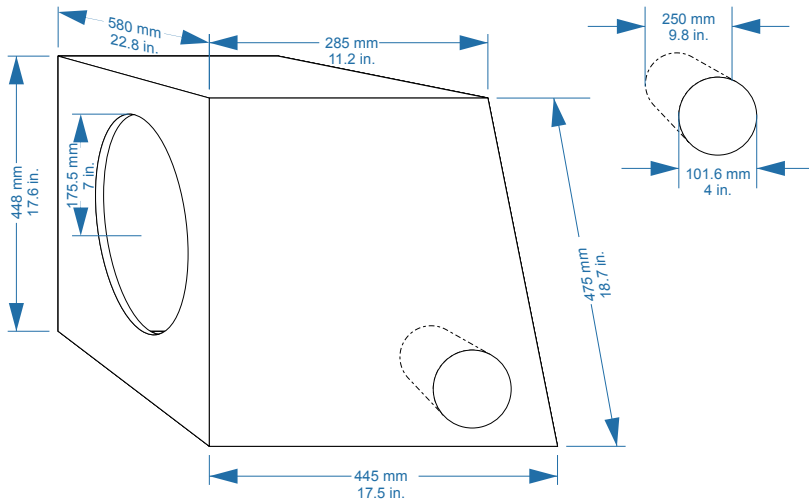
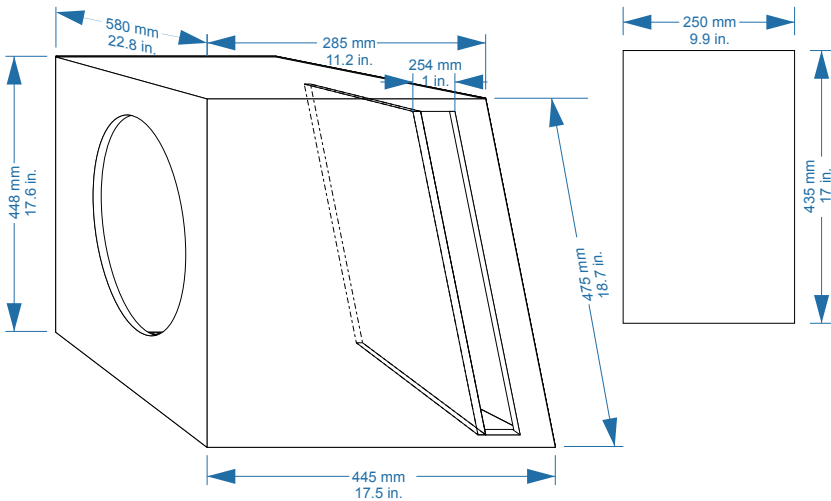


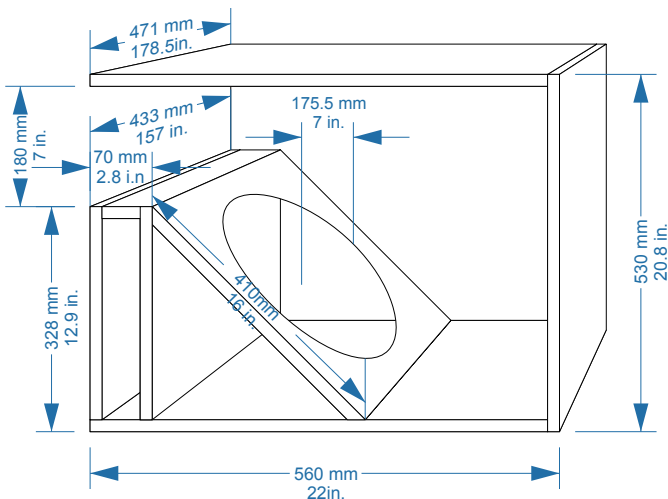
<b>MODEL:</b> XTR152D / XTR154D		
<b>SPEAKER TYPE:</b> WOOFER		
<b>BOX AREA:</b>	71,9 LTS.	2,5 FT <sup>3</sup>
<b>PORT AREA:</b>		
<b>Suggested frequency to set speaker on amplifier and or crossover.</b>		150-80 Hz
<b>Mode to set frequency on amplifier and or crossover.</b>		LOW PASS
<b>Suggested Material.</b>		MDF
<b>thickness of Material.</b>	15 mm	5/8"



<b>MODEL:</b> XTR152D / XTR154D		
<b>SPEAKER TYPE:</b> WOOFER		
<b>BOX AREA:</b>	69,9 LTS.	2,5 FT <sup>3</sup>
<b>PORT AREA:</b>	2 LTS.	0,07 FT <sup>3</sup>
<b>Suggested frequency to set speaker on amplifier and or crossover.</b>		120-80 Hz
<b>Mode to set frequency on amplifier and or crossover.</b>		LOW PASS
<b>Suggested Material.</b>		MDF
<b>thickness of Material.</b>	15 mm	5/8"



<b>MODEL:</b> XTR152D / XTR154D		
<b>SPEAKER TYPE:</b> WOOFER		
<b>BOX AREA:</b>	66,5 LTS.	2,3 FT <sup>3</sup>
<b>PORT AREA:</b>	5,4 LTS.	0,19 FT <sup>3</sup>
<b>Suggested frequency to set speaker on amplifier and or crossover.</b>		120-80 Hz
<b>Mode to set frequency on amplifier and or crossover.</b>		LOW PASS
<b>Suggested Material.</b>		MDF
<b>thickness of Material.</b>	15 mm	5/8"



<b>MODEL:</b> XTR152D / XTR154D		
<b>SPEAKER TYPE:</b> WOOFER		
<b>BOX AREA:</b>	85 LTS.	3 FT <sup>3</sup>
<b>PORT AREA:</b>	5,4 LTS.	0,19 FT <sup>3</sup>
<b>Suggested frequency to set speaker on amplifier and or crossover.</b>		120-80 Hz
<b>Mode to set frequency on amplifier and or crossover.</b>		LOW PASS
<b>Suggested Material.</b>		MDF
<b>thickness of Material.</b>	15 mm	5/8"