

HT-F20R Automatic Capsule (Kcup/nespresso) Filling and Sealing Machine



1. MACHINE APPLICATION

This is a fully-automatic coffee capsule filling and sealing machine, which can produce K-Cup, Nespresso compatible capsule, Dolce Gusto, Lavazza, etc. This machine is also a mini-type which speeds at 8-12 capsules per minute (depends on which kind of capsule and coffee, etc.). With quite affordable price, this machine is suitable for customers want to test the market of new products.

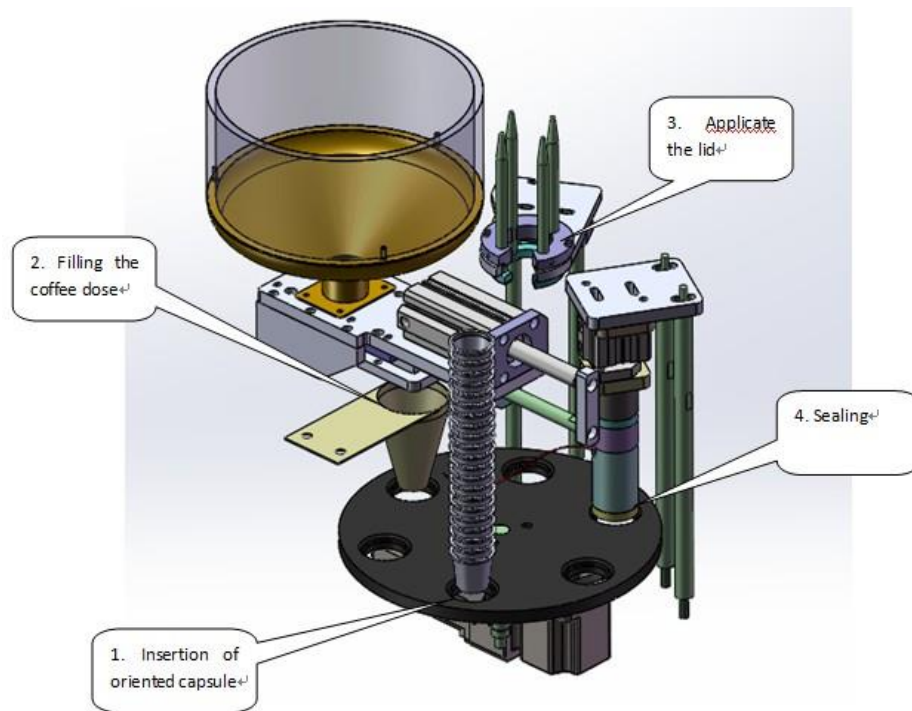
2. TECHNICAL PARAMETERS

MODEL	HT-F20R
PRODUCT	Ground Coffee
Grade	automatic, PLC, Electro pneumatic driven
CAPACITY	12-15 capsules/minute
FEEDING	Servo driven auger filling
FILLING WEIGHT	0-20g
FILLING ACCURACY	$\pm 0.2g$
POWER	Single Phase 220V 50/60HZ 1200W
AIR SUPPLY/ Consumption	$\geq 0.6Mpa, 0.1m^3 /min$
WEIGHT	120Kg
DIMENSION	602×820×1653mm
Casing	Stainless steel, duralumin, etc
Contact parts	Stainless steel

3. Container Specification

	<p>K-CUP</p> <p>Compatible with the k-cup 2.0 coffee machines and others on the market.</p>
	<p>Nespresso capsule</p> <p>Injection molded LP* compatible capsules.</p> <p>Aluminum compatible capsules.</p> <p>Pre-cut aluminum lids</p> <p>Compatible with the Nespresso coffee machines and others on the market.</p>
	<p>Lavazza Blue, or other customized capsules and pods</p>

4. Flow chart



1. Inserting empty capsules
2. Filling the coffee
3. Grabbing the lid and putting on the capsule
4. Sealing the capsule

5. CHARACTERISTICS

5.1 Put the capsule into the bar manually



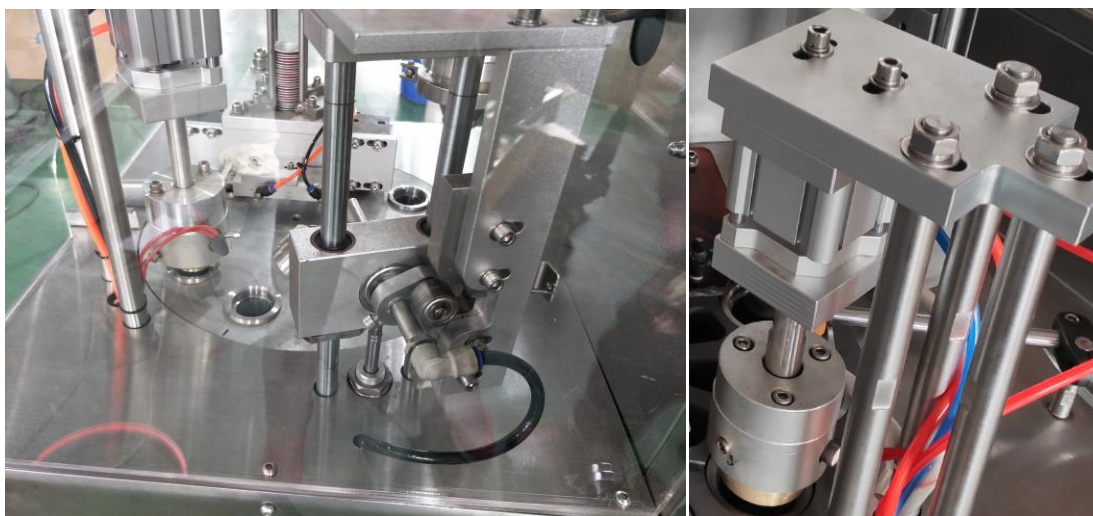
5.2 High accuracy at ± 0.2 g when filling the coffee by Servo driven auger. With slide way system, it is very easy to empty residue coffee in the hopper and easy to clean the hopper too.



5.3 lids dropping by vacuum sucking **guaranteed 100%** successful rate.



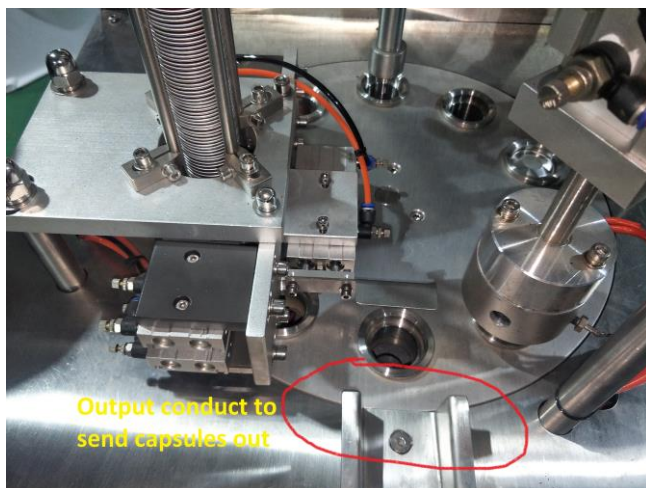
5.4 Patented design of soft contact completely sealing device to guarantee a tight and neat sealing, and assure 100% sealing without sealing leakage or sealing insufficient. (Patented design, counterfeiting not allowed!)



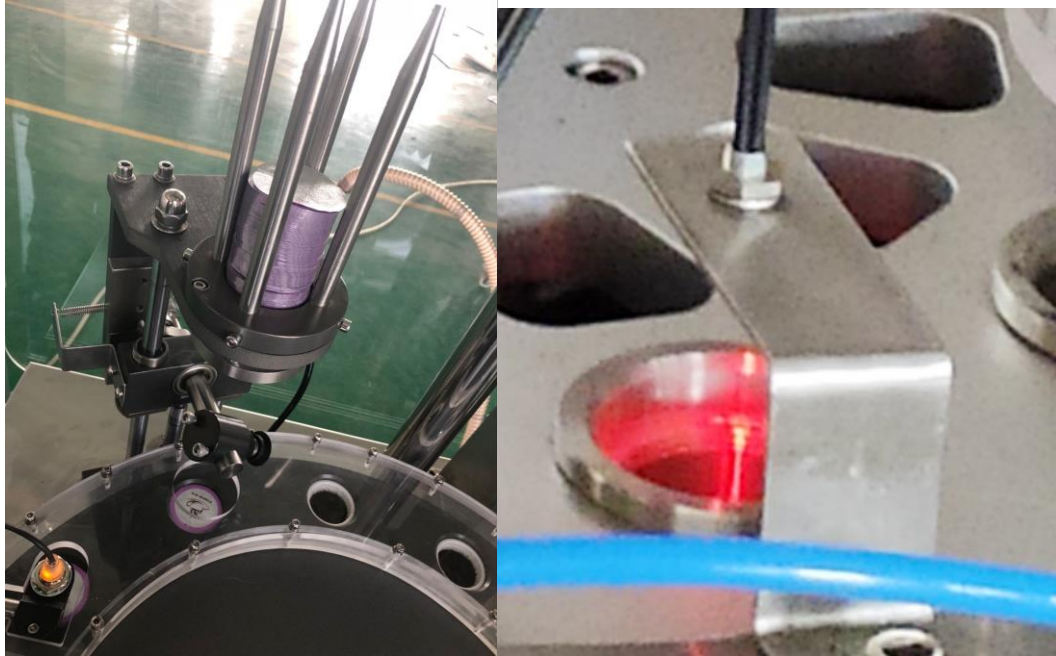
5.5 Main parts are made of food grade stainless steel 304 to easy clean and compatible with regulations of food industry.



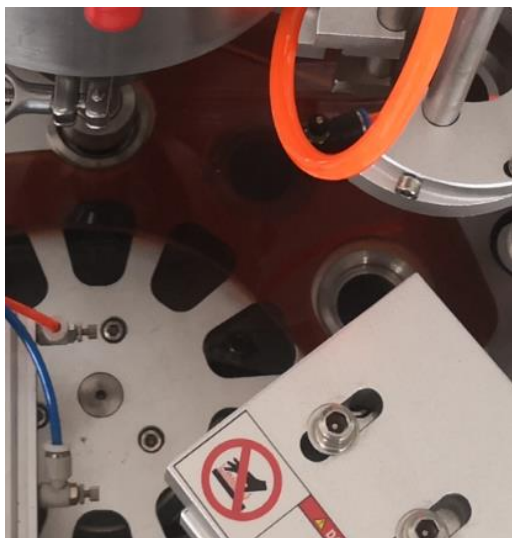
5.6 New design of output conduct to send the finished capsule out



5.7 Sensor detection on every procedure to guarantee error correction on each step. **No cup no filling, no lid no sealing**, etc.



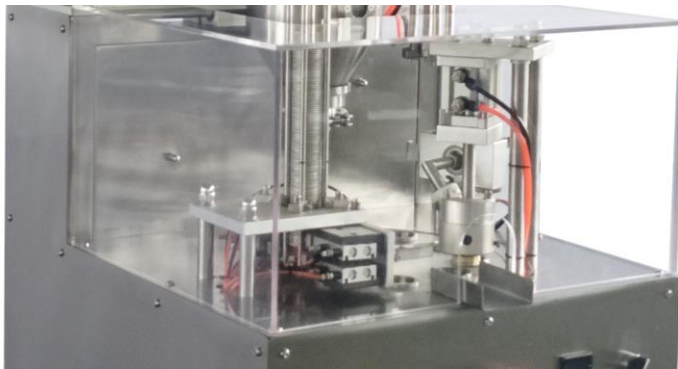
5.8 The station is working in a closed space with **nitrogen flushing** to maximum assurance the coffee fresh. (Option, needs to be working with nitrogen generator)



5.9. Equipped with clean air gun.



5.10. Safe door design (Option)



5.11. Nitrogen Generator (option)

Main Specification of PSA Nitrogen Generator



Power: 220V 1P / 0.1Kw

Air flow: 3Nm³ /h

Purity: 99.5-99.9%

Output pressure: 0.1-0.7Mpa Adjustable

Refrigerated Air Dryer & Precision Filters

5.12 Air compressor (Option)

Parameters of the air compressor:

Voltage (V): 220V

Power (W): 1200W

Speed (r/min): 1400 r/min

Volume (L) : 40 L

Air Pressure (Mpa): 0.7 Mpa (101.5 PSI)

Discharge volume (L/min) : 200L/min

Weight (Kg): 35.5Kg

Size (cm) : 61x28x68 cm



PART THREE: COMPANY PROFILE



Wenzhou HaiTec Machinery CO., Ltd. is registered as a high-tech enterprise, locates in the “China packaging machinery city” reputation of the beautiful city Ruian. Haitec provides professional packing machines with consolidated function as research, production, sales and service. Which capsule (cup) filling machines and vertical cartoning machines are top quality in China now. Haitec has been certified by ISO9001: 2000 international standard quality system, EU CE certification, tens of research and development of the patent certificates. Such quality system requirements has been carried out through related production process thoroughly. Technical strength of Haitec promises continuous improvement in technical solution and excellent after-sale service.