

# COFFEE CONVEYORS

Gentle Clean Reliable Conveying



## Cable and Disc Technology

We paid a visit to Apffels Coffee 10 years after their initial installation of 6 conveyor systems.

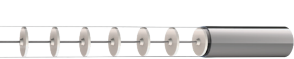
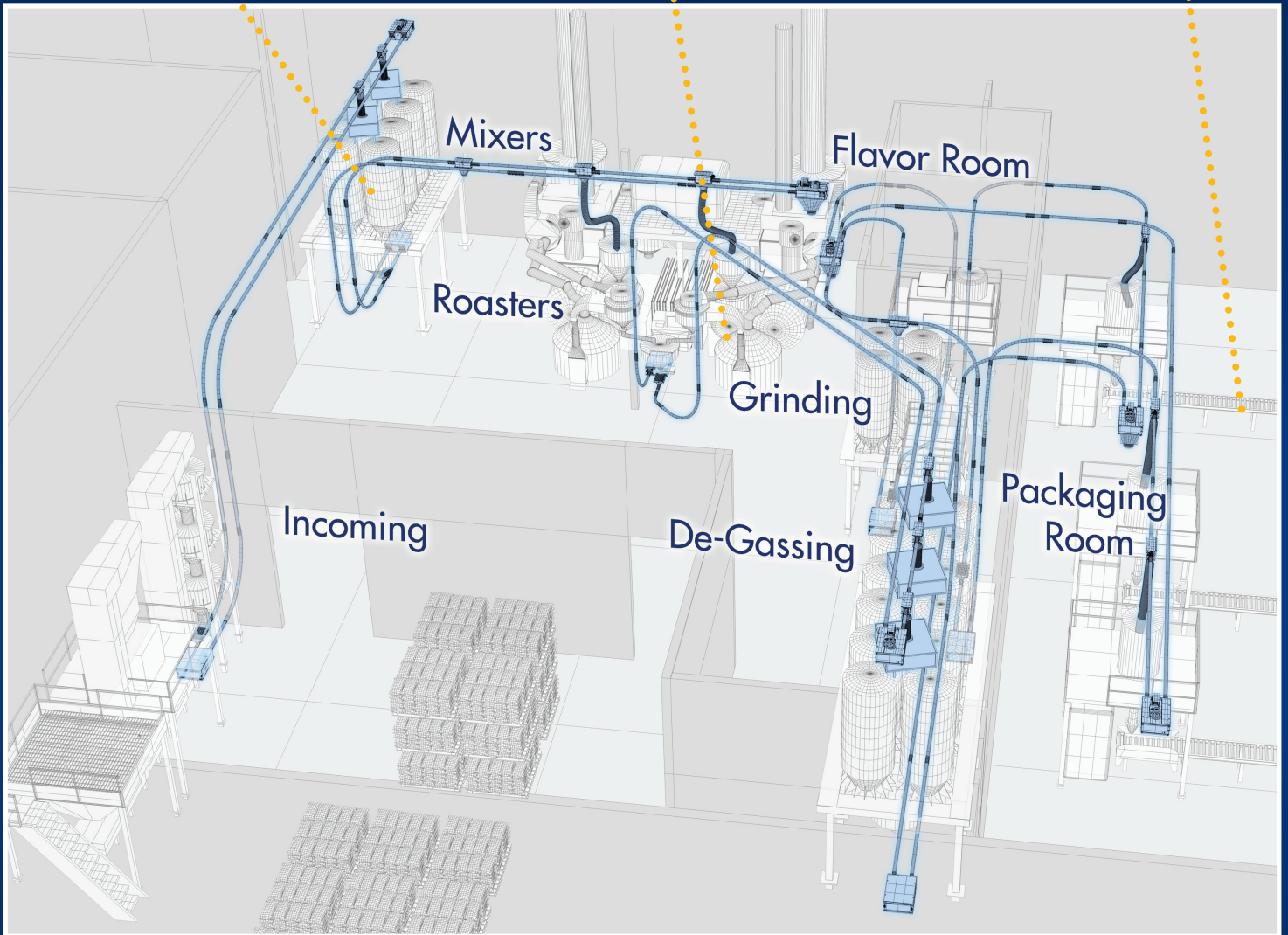
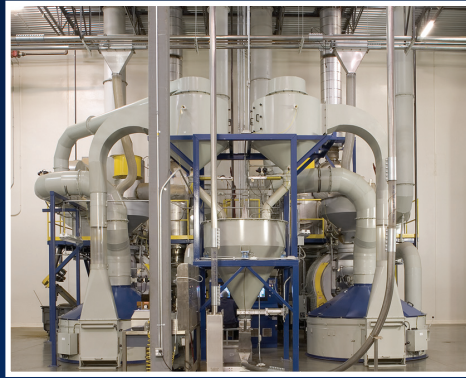
We wanted to follow up on how they were working. We spoke to their Production & Operations Manager, Guillermo Contreras.

I asked Guillermo what are the 3 most important benefits Cablevey delivers and he replied:

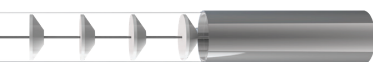
- “ *Well, one is that it's gentle on the bean. I know everybody likes that.*
- *As close to perfect look as you can get. Low maintenance.*
- *...10 years we've had it.* ”



(641) 673-8451  
[www.cablevey.com](http://www.cablevey.com)



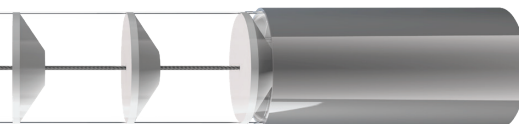
**2000 Series • Two-Inch Diameter (50.8mm) System**  
Up to 75 Ft<sup>3</sup> | (2.12 M<sup>3</sup>) / Hour



**4000 Series • Four-Inch Diameter (101.6mm) System**  
Up to 525 Ft<sup>3</sup> | (14.87 M<sup>3</sup>) / Hour



**6000 Series • Six-Inch Diameter (152.4mm) System**  
Up to 1,240 Ft<sup>3</sup> | (35.4 M<sup>3</sup>) / Hour



**8000 Series • Eight-Inch Diameter (203.2mm) System**  
Up to 2,000 Ft<sup>3</sup> | (56.6 M<sup>3</sup>) / Hour

**Replaces:**

- Bucket Elevators
- Chain-disc Conveyors
- Pneumatic Systems
- Screw Augers

**For:**

- Whole Bean Coffee
- Roasted Coffee
- Green Coffee
- Soluble Coffee

**(641) 673-8451**  
[www.cablevey.com](http://www.cablevey.com)

