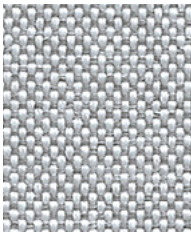




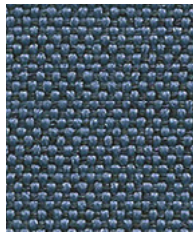
Fabric Colour Finishes

Hotbox 2 Fabric Covers

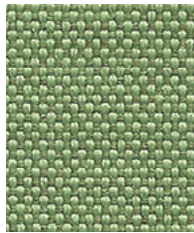
Quest



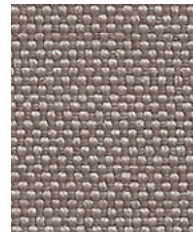
Barnacle
QUE03



Limpet
QUE09



Sea Grass
QUE13

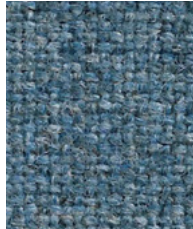


Pebble
QUE27

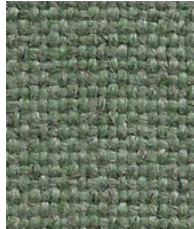
Main Line Flax



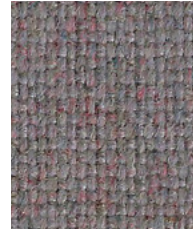
Stratford
MLF64



Epping
MLF51



Greenwich
MLF52



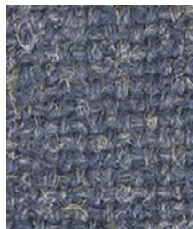
Brixton
MLF47

Utility Case

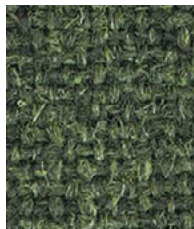
Hemp



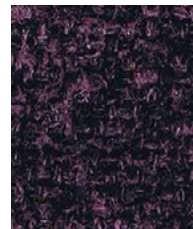
Pollen
HWP08



Fallow
HWP28



Hectare
HWP21



Hedgerow
HWP09

Other colours available to order subject to minimum order quantity.
Colours displayed on a digital file may vary. Please request a physical fabric card before ordering.

Technical information

Quest

Composition

100% post-consumer recycled polyester including 75% SEAQUAL® YARN

Environment

Certified to the EU Ecolabel
Certified to OEKO-TEX® Standard 100
Certified to Indoor Advantage™ Gold
Made from 100% post-consumer recycled polyester
Non metallic dyestuffs

Width

137 cm minimum

Weight

330 g/m² ±5% (452 g/lin.m ±5%)

Abrasion Resistance*

Heavy duty / 10 year guarantee. Independently certified to ≥100,000 Martindale cycles

Flammability

EN 1021 - 1 (cigarette)
EN 1021 - 2 (match)
BS 7176 Low Hazard
UNI 9175 Classe 1 IM
BS 476 Part 7 Class 1Y (Adhered)
EN 13501-1 Adhered Class B, s1, d0
EN 13501-1 Un-adhered Class B, s1, d0
Optional: Please specify when ordering:
BS 5852 Ignition Source 5 with Enviroflam5
BS 7176 Medium Hazard with Enviroflam5
IMO FTP Code (Part 8) with Enviroflam5
Note: Flammability performance is dependent on components used. Our certificates show what substrates have been used in our tests. For composite tests customers must ensure their complete furniture meets the necessary standards.

Light Fastness

4-6 (ISO 105 - B02)

Fastness to Rubbing

Wet: 4, Dry: 4 (ISO 105 - X12)

Acoustic Properties

Acoustically transparent, acoustic graphs available upon request.

Bleach Cleanable

ISO 105 E03 colour change 4 for dilution factor 1:4 chlorine solution

Cleaning

Vacuum regularly. Wipe clean with a damp cloth using a proprietary upholstery shampoo/soap. For deeper cleaning use steam, bleach, alcohol or professionally dry clean. Can be washed at 60°C. Full details can be found in our cleaning and disinfection guide.

*Abrasion testing produces a wide variability of results even from the same test sample. The independent certificate of ≥100,000 cycles is available on our website or from our customer service team. Internally we specify this product at >100,000 cycles which we believe is realistic for repeatability of testing. Please be aware that abrasion testing alone is not a reliable indicator of the actual wear performance of fabrics. We're so confident in the durability of our products that we provide a robust 10 year guarantee (full details available).

Please note that seam performance is dependent on seam construction and needle and thread type. We recommend that appropriate sewing advice be taken.

Batch to batch variations in shade may occur within commercial tolerances. We reserve the right to alter technical specifications without notice. The Unregistered Design Rights and the Copyright in all designs are the exclusive property of Camira Fabrics Limited.

Main Line Flax

Composition

75% Virgin Wool, 25% Flax

Environment

Certified to the EU Ecolabel
Certified to Indoor Advantage™ Gold
Rapidly renewable and compostable
Made from wool and plant fibre
Non metallic dyestuffs

Width

140 cm minimum

Weight

437 g/m² ±5% (612 g/lin.m ±5%)

Abrasion Resistance*

Heavy duty / 10 year guarantee. Independently certified to ≥50,000 Martindale cycles

Flammability

EN 1021 - 1 (cigarette)
EN 1021 - 2 (match)
BS 7176 Low Hazard
BS 5852 Ignition Source 5
BS 7176 Medium Hazard
NF D 60-013
ÖNORM B 3825 & A 3800-1 (58kg/m² CMHR Foam)
UNI 9175 Classe 1 IM
BS 476 Part 7 Class 1 (Adhered)
EN 13501-1 Adhered Class B, s1, d0
BS 5867-2: Type B Curtains & Drapes
IMO FTP Code (Part 8)
The Furniture and Furnishing (Fire) (Safety) Regulations 1988 (Domestic Cigarette & Match)
Note: Flammability performance is dependent on components used. Our certificates show what substrates have been used in our tests. For composite tests customers must ensure their complete furniture meets the necessary standards.

Light Fastness

4-5 (ISO 105 - B02)

Fastness to Rubbing

Wet: 3, Dry: 4 (ISO 105 - X12)

Acoustic Properties

Acoustically transparent, acoustic graphs available upon request.

Cleaning

Vacuum regularly. Wipe clean with a damp cloth using soap and water or use proprietary shampoo. For deeper cleaning use steam or professionally dry clean. Full details can be found in our cleaning and disinfection guide.

*Abrasion testing produces a wide variability of results even from the same test sample. The independent certificate of ≥50,000 cycles is available on our website or from our customer service team. Internally we specify this product at >35,000 cycles which we believe is realistic for repeatability of testing. Please be aware that abrasion testing alone is not a reliable indicator of the actual wear performance of fabrics. We're so confident in the durability of our products that we provide a robust 10 year guarantee (full details available).

Please note that seam performance is dependent on seam construction and needle and thread type. We recommend that appropriate sewing advice be taken.

Batch to batch variations in shade may occur within commercial tolerances. We reserve the right to alter technical specifications without notice. The Unregistered Design Rights and the Copyright in all designs are the exclusive property of Camira Fabrics Limited.

Hemp

Composition

70% Virgin Wool, 30% True Hemp

Environment

Certified to the EU Ecolabel
Certified to Indoor Advantage™ Gold
Rapidly renewable and compostable
Made from wool and plant fibre
Non metallic dyestuffs

Width

140 cm minimum

Weight

460 g/m² ±5% (644 g/lin.m ±5%)

Abrasion Resistance*

Heavy duty / 10 year guarantee. Independently certified to ≥50,000 Martindale cycles

Flammability

EN 1021 - 1 (cigarette)
EN 1021 - 2 (match)
BS 7176 Low Hazard
BS 5852 Ignition Source 5
BS 7176 Medium Hazard
UNI 9175 Classe 1 IM
BS 5867-2: Type B Curtains & Drapes
The Furniture and Furnishing (Fire) (Safety) Regulations 1988 (Domestic Cigarette & Match)
Note: Flammability performance is dependent on components used. Our certificates show what substrates have been used in our tests. For composite tests customers must ensure their complete furniture meets the necessary standards.

Light Fastness

5 (ISO 105 - B02)

Fastness to Rubbing

Wet: 3, Dry: 4 (ISO 105 - X12)

Cleaning

Vacuum regularly. Wipe clean with a damp cloth using soap and water or use proprietary shampoo. For deeper cleaning use steam or professionally dry clean. Full details can be found in our cleaning and disinfection guide.

*Abrasion testing produces a wide variability of results even from the same test sample. The independent certificate of ≥50,000 cycles is available on our website or from our customer service team. Internally we specify this product at >35,000 cycles which we believe is realistic for repeatability of testing. Please be aware that abrasion testing alone is not a reliable indicator of the actual wear performance of fabrics. We're so confident in the durability of our products that we provide a robust 10 year guarantee (full details available).

Please note that seam performance is dependent on seam construction and needle and thread type. We recommend that appropriate sewing advice be taken.

Batch to batch variations in shade may occur within commercial tolerances. We reserve the right to alter technical specifications without notice. The Unregistered Design Rights and the Copyright in all designs are the exclusive property of Camira Fabrics Limited.

