

T

TRUE FALSE®

*Imperfectly*  
Perfect



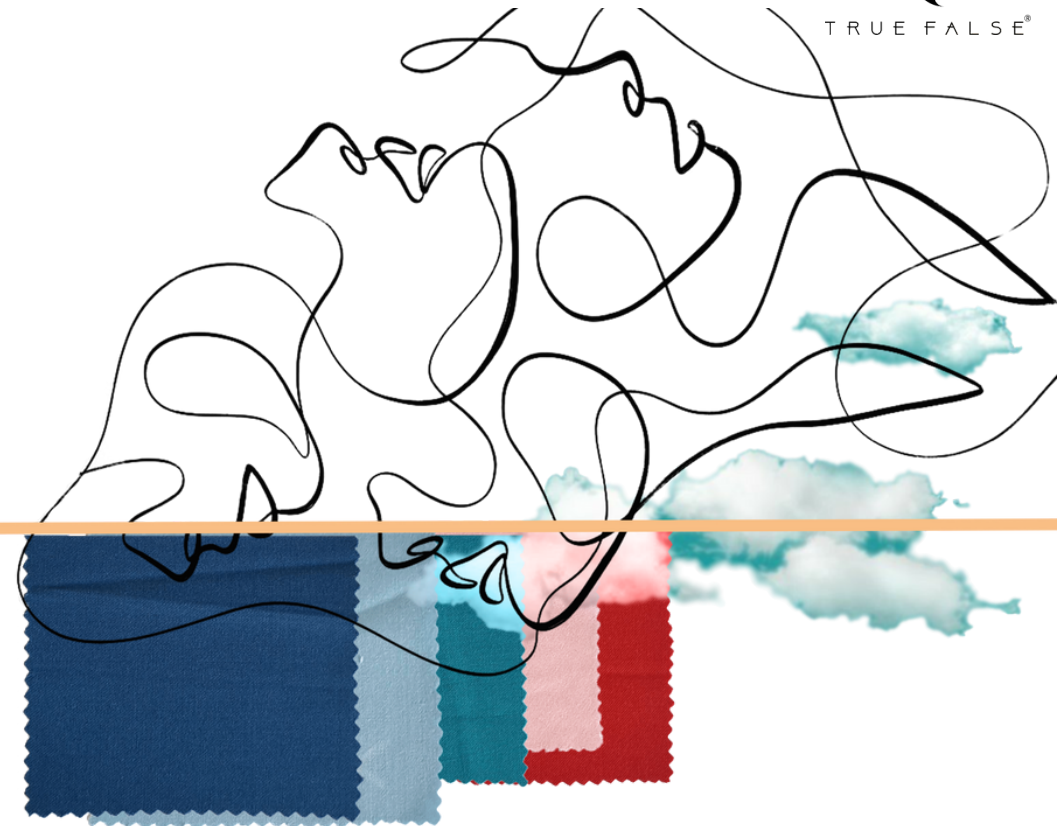
# imperfect, bold & unique

NEW COLLECTION



**T**  
TRUE FALSE®

**T**  
TRUE FALSE®



"Dressing well is a matter of personal taste, limitations such as only accepting certain dress codes in 'well-dressed' lists have long been broken"

**IMPERFECTION SHOULD BE VALIDATED AS A  
FORM OF AUTHENTICITY, NATURALNESS,  
AND SELF-EXPRESSION**



*Perfect*

The unique feature of this puffed sleeve suit is its asymmetric lapel that satisfies the idea behind the collection with Lapis blue color which is often described as a deep, rich blue with a hint of purple that adds a unique twist with a formal attire



BLAZER  
**PUFFED  
SHOULDER**

Slim fit  
Asymmetric detail in lapel and cut-work cuff  
Suit type - Double breasted  
Front opening



SKIRT  
**WRAP  
PATTERN**

Skirt fit - Pencil fit  
Above knee length

ASYMMETRIC BLAZER WITH BELT

**T**  
TRUE FALSE®



*Perfect*

An asymmetric cold blue suit with a striped belt is a fashionable and unique combination of clothing. The designer's love for detailing can be witnessed by the accordion pleats beautifully placed on pencil skirt

BLAZER

# ASYMMETRIC BLAZER

Slim fit  
Features - Asymmetric pleated lapel, overlap pattern, asymmetric strips belt  
Suit type - Single breasted  
Front opening

**T**  
TRUE FALSE®



SKIRT

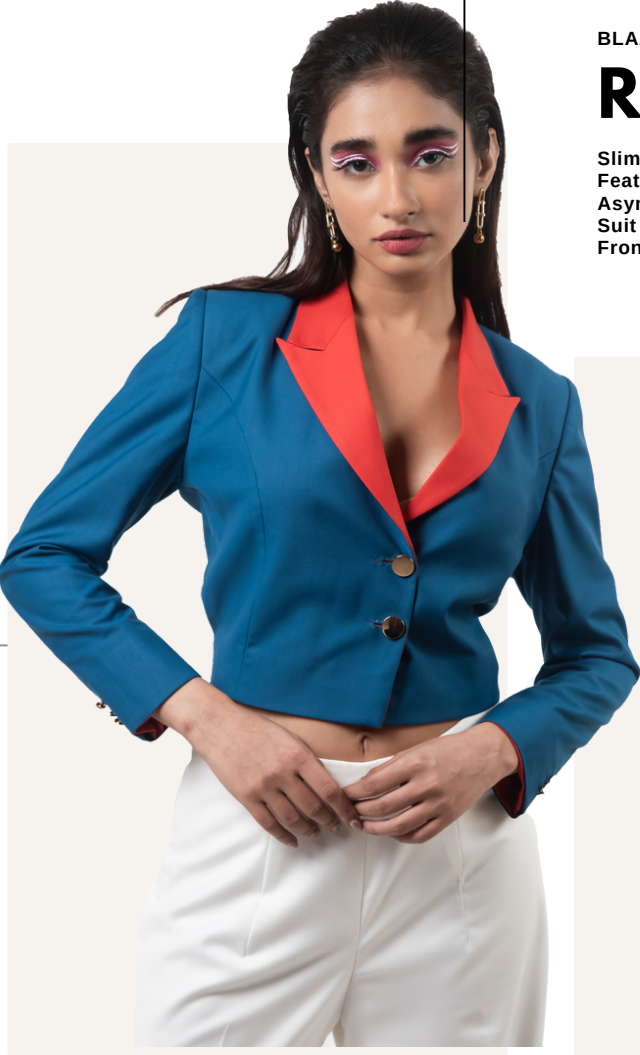
# ACCORDION PLEAT

Skirt fit - Pencil fit  
Feature - Accordion pleat detail  
Above knee length





*Perfect*



BLAZER  
**REVERSIBLE**

Slim fit  
Features - Reversible, crop pattern,  
Asymmetric dual lapel  
Suit type - Double breasted  
Front opening



The cropped blazer is known for its sustainable reversible feature and can be worn in different ways. Moreover, the crop makes it a versatile and practical addition to any wardrobe and can be paired with various bottoms.

PANT  
**WIDE LEG**

Pant fit - Comfort fit  
Feature - Wide leg



The tulip is a popular flower whose shape is quite an inspiration for many designs. Similarly, the Tulip harmony of the look is perfect for any occasion, casual or formal. The unique cut to the pants and color co-ordination is an addition to making a statement

BLAZER AND TOP  
**TULIP**

Blazer fit - Regular  
Features - No lapel, tulip sleeve pattern  
Suit type - Single breasted  
Front opening

TOP  
Regular fit  
Features - Crop top, shoulder straps, cut out detail  
Top front - Single breasted, front opening



PANT  
**TULIP PANT**

Comfort fit  
Wide leg  
Features - Ankle length, tulip inspired and unique cut



NOTCH BLAZER WITH PANTS

**TRUE FALSE**<sup>®</sup>



The navy blue suit and pant set are timeless and fashionable for any formal occasion. The deep blue color adds sophistication and elegance, making it ideal for a business meeting or special event.

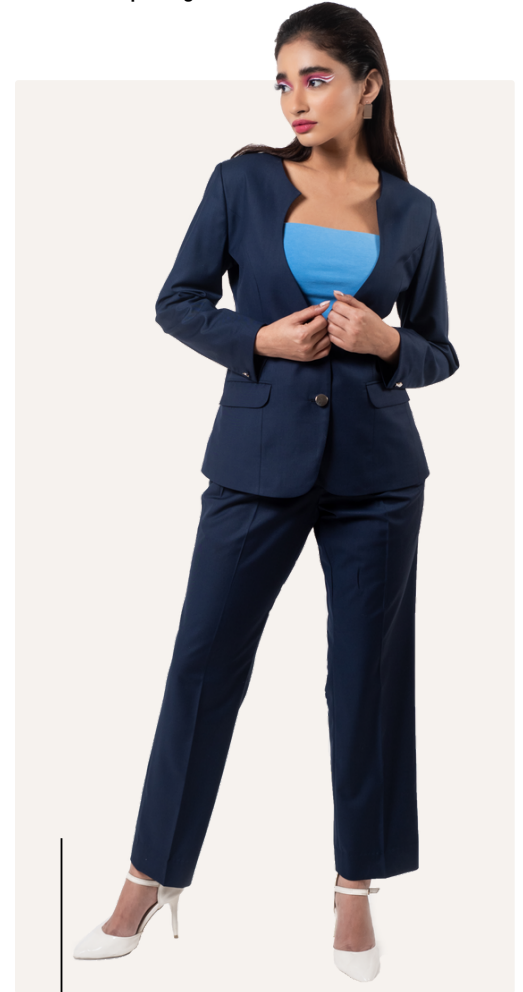


PANT  
**TAILORED  
FIT**

Perfect for your social and professional event

**BLAZER**  
**WELL TURN  
NECKLINE**

Slim fit  
Suit type - Single breasted  
Front opening



NO COLLAR NO LAPEL BLAZER

**T**  
TRUE FALSE®



*Perfect*

A new exploration of the soft pink and a no lapel no collar suit is an idea that can dominate the formal attire with a bit of mischief. The opening of this suit is so blissfully constructed.



PANT

**WIDE  
LEG**

Comfort fit for every occasion

BLAZER

**NO LAPEL** TRUE FALSE®

Slim fit  
Suit type - Single breasted  
Front opening





SHAWL COLLAR BLAZER WITH PANTS

**TRUE FALSE**<sup>®</sup>



In a busy town, the lady needs to stand out with ease and a twist. A shawl collar blazer and tailored-fit pant is a smart pick. That kind of easy, no-fuss styling is just what a busy lady needs



PANT  
**TAILORED  
FIT**

relaxed and professional

BLAZER  
**SHAWL  
COLLAR**

Slim fit  
Suit type - Single breasted  
Front opening



**TRUE FALSE**<sup>®</sup>

DOUBLE LAPEL BLAZER WITH PANTS

**TRUE FALSE**<sup>®</sup>



*Perfect*



BLAZER

# DOUBLE LAPEL

**TRUE FALSE**<sup>®</sup>

Slim fit  
Feature - Double lapel  
Suit type - Single breasted  
Front opening



PANT

# TAILORED FIT

Perfect for your social and professional event

The black suit is a classic since day one however, it can be seen as modern as this piece spoke to the designer's love for lapels. The double lapel is clearly a conversation starter



The body-hugging numbers almost feel modest enough to be placed in the semiprofessional category but thanks to its unconventional neckline, and mellow color it only enhances the personality



DRESS  
**BODYCON**

Dress fit - Bodycon  
Features - Notched neckline, cape sleeve



DRESS  
**SOFT PINK**

A dress that suffice your formal and informal expectation



SF-19, Darshanam Arise,  
Gotri Sevasi Road,  
Vadodara, Gujarat - 391101



[hello@trueandfalse.in](mailto:hello@trueandfalse.in)



TrueFalse



[www.trueandfalse.in](http://www.trueandfalse.in)