



Victoriana Bespoke Kitchens



Welcome to Victoriana

4 - 5 About us

6 - 7 Our Manufacturing process

8 - 15 Materials & Finishes

16 -33 Our Collections



34 - 35 The design process

35 - 47 The Shaker Collection

48 - 35 The Westminster Collection

60 - 71 The Driftwood Collection

72 - 73 Bespoke Cabinetry



ABOUT US

Victoriana started trading in 1983 from a small shop in the heart of Portsmouth on the south coast. Our philosophy was simple, provide high quality, solid wood furniture at fair prices, whilst focusing on the customer as an individual. Over the years we've diversified our products and services and expanded our floor space and ranges, but our core principles have remained the same.

We have two shops located within walking distance of each other and nestled amongst a fantastic selection of some of Southsea's finest cafes and boutique shops.

We specialise in all things furniture related, from traditional antiques and solid wood contemporary styles, to industrial and rustic painted furniture, including all the finishing touches like throws and home accessories.

Over the last 10 years we have spent a lot of time developing the bespoke furniture side of our business, experimenting with a variety of different timbers and construction methods. With a little time and patience, we have been able to develop three solid wood kitchen ranges, whilst still maintaining our commitment to quality and pricing.

We have, from our earliest days, treated each of our customers as individuals. Unlike larger retailers we take the time to get to know our customers personally which is why so many return to us throughout the years. Choosing Victoriana for your furniture needs is the start of a lifetime of high quality, great value furniture and an experience that we hope you will enjoy again and again.

OUR MANUFACTURING PROCESS

Where is it made?

Our years of experience with solid wood furniture has given us unique insight into what we wanted from our kitchens and bespoke products. To ensure we met our own strict standards we decided to partner with a UK based manufacturer who has over 30 years experience in solid wood cabinetry and furniture making. Having both carpentry and painting workshops in the same factory gives us a high level of control over the quality and finish of the products produced. This also allows us to provide both high-end, spray-painted finishes for a look that's smooth and sleek, or hand painted finishes for that slightly more traditional, distressed look.

What is it made from?

All our kitchens at Victoriana are constructed using solid wood timbers from front to back, with absolutely NO plywood, Chipboard or MDF. The type of timbers used vary depending on the style and design of your kitchen. Primarily, a combination of Knotless Tulip wood and Pine are used in the construction of our painted kitchens, but we have also created kitchens from Solid Oak and Walnut for those that prefer the beauty of natural timbers.



How it is made?

All our kitchen cabinetry and bespoke furniture is crafted by skilled carpenters with over 30 years' experience in the furniture industry. Advances in technology and manufacturing have decreased build times, but we still maintain the same high attention to detail and quality you would expect to find in hand-built cabinetry. We still use dove-tailed and mortise and tenon jointing during construction and the highest quality soft close door and drawer runners are used to ensure your kitchen lasts a lifetime.



MATERIALS & FINISHES

When it comes to finishing there are several options available and it will depend entirely on the look you are trying to achieve. Our most popular finish is our hand spray painted option that can come in over 100 different paint colours. It's applied in 3 coats with any imperfections being filled and sanded after every coat to leave a smooth and flat finish.

Our standard painted finishes are only applied to the external surfaces of your cabinets with the internal sections finished with a spray lacquer for protection and to highlight the fact that your kitchen is constructed from solid timbers. If you require the internal surfaces of your cabinets to be spray finished to match the exteriors, this can be arranged for an extra 5% of the cabinet price.

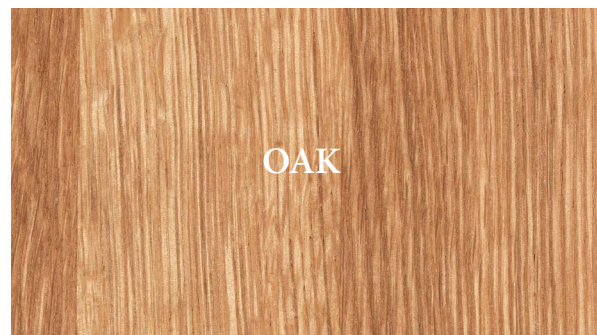
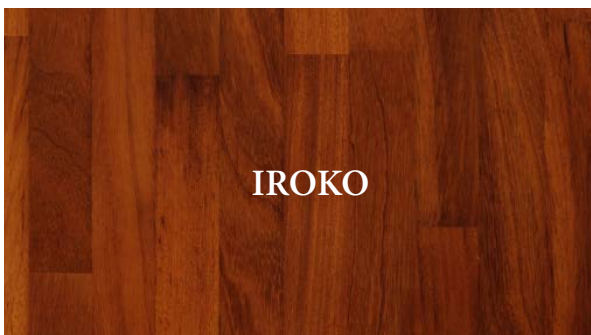
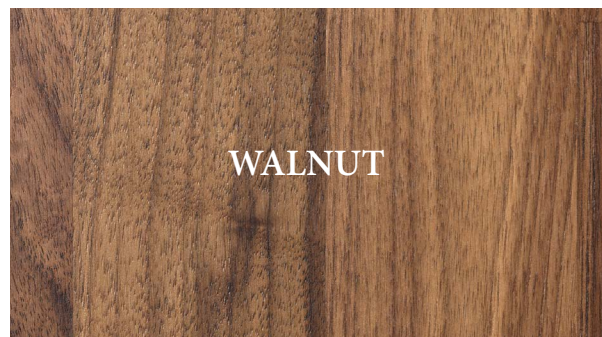
If you are opting for a look that emphasises the natural timbers your cabinets are constructed with, your finish will depend on whether they are constructed from hard woods or soft woods. If you have your kitchen constructed from hardwoods such as Oak or Walnut, then a spray lacquered finish brings out the natural colours of the timbers whilst giving the units a slight sheen. If you have a pine kitchen then a natural beeswax finish is applied. This gives the units a beautiful warm feel whilst having the added benefit of being very easy to re-wax if spills or chips occur.



WORKTOPS

When it comes to work surfaces there's a lot of choice out there and whilst traditionally Victoriana has focused on solid wood worktops, we realise that some people prefer the look and feel of natural stone, whilst others prefer the functionality and cost benefits of laminate worktops. Here is our quick guide to work surfaces.

Wood is a traditional, beautiful and an eco-friendly material due to it being a renewable and carbon positive. An adaptable finish, which can be used for the main worktops, in addition to islands, breakfast bars or end-grain chopping boards. Wood generally requires some degree of maintenance, although modern, low-engineered materials can make them virtually maintenance free.



The Pros:

- Sustainable material, when sourced from FSC (Forest Stewardship Council) approved sources.
- A wide choice of different materials, including Oak, Beech and Walnut amongst others.
- Carbon positive material.
- Grants the image and feeling of warmth around the room.
- Can be sanded and re-oiled down the line to be restored to its original quality.

The Cons:

- Will require regular oiling to protect against water absorption and damage. If not oiled, is susceptible to bacteria holding, staining and the growth of mould.



Quartz (or reconstituted stone) has become the standard-bearer for kitchen worktops in the past decade, due to its remarkable combination of a multitude of design options and an unbeatable degree of practicality. Manufactured from grounded-down granite mixed with resins, pigments and anti-bacterial agents, it's genius comes from the additives we can include for aesthetic value, such as mirrors, glass or metals to finish the worktop in a variety of ways.



The Pros:

- Quartz is a non-porous worktop, extremely resilient to staining and reasonable level of heat resistance.
- Comes in a variety of textures, including polished, silk-matt and natural stone.
- Available in larger slabs than granite, meaning less visible joints are needed to fit it.
- Light, plain colours and with a consistent finish, which makes Quartz a fine option for contemporary kitchens.
- Thinner slabs than granite, again a state which lends itself to contemporary themes.

The Cons:

- Whilst more practical and adaptable than granite, Quartz lacks Granite's natural depth and beauty.
- As it's highly adaptable, it's easy for low-quality manufacturers to produce a sub-standard variation of Quartz. As per our quality guidelines, we recommend you accept quartz offered at no less than 93% quartz content.
- The process of creating quartz is complex and therefore the end product tends to be more expensive than other composite work surfaces.

Granite, an igneous rock, formed over a million years deep within the earth's core is an ideal worktop for kitchens. Incredibly durable, stain resistant, water resistant and heat proof makes granite a popular choice for customers. Granite is available in a wide range of unique colours, textures and finishes. Granite offers a beautiful and elegant finish to any kitchen. Highly sought after for its stunning beauty, granite is easy to maintain and will retain its original appearance long after the initial installation. A naturally occurring stone, granite's unique selling point is its unparalleled variety and beauty, due to its glorious graining & veining and a glistening crystal structure.



The Pros:

- Its stunning visual beauty.
- Extremely resistant to heat, reducing the need for trivets and boards.
- If correctly and properly sealed, granite has a good stain resistance. Extremely durable; will absorb most scratches and knocks.
- Comes in a variety of different textures to suit your tastes.

The Cons:

- Can be highly expensive, particularly for the granite in the highest demand.
- For the eco-friendly, granite might not be a good choice because of extensive mining in remote locations and the extreme transportation requirements.
- Will stain if not properly sealed.
- We advise customers to be aware of cheap imitation imports, which have been dyed to impersonate granite.

Marble is a metamorphic rock that has been created by extreme heat and pressure. Marble is often identified by the natural beautiful 'veins' that run through it, giving it that beautiful and elegant finish. Marble is a porous stone which does make it more susceptible to damage or staining from acidic products. Marble is often widely used for kitchens, bathrooms, flooring and fireplace surrounds. Marble is available in various colours and finishes. When treated with the right chemicals marble not only looks stunning but will last for many years to come.



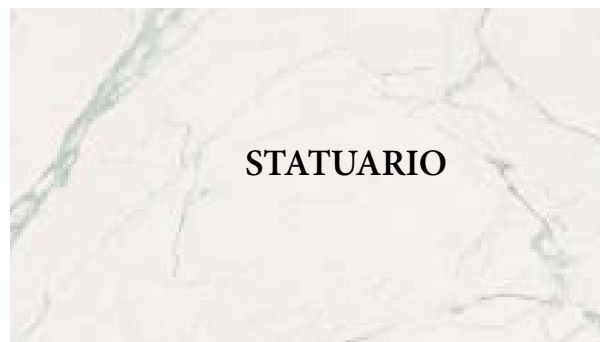
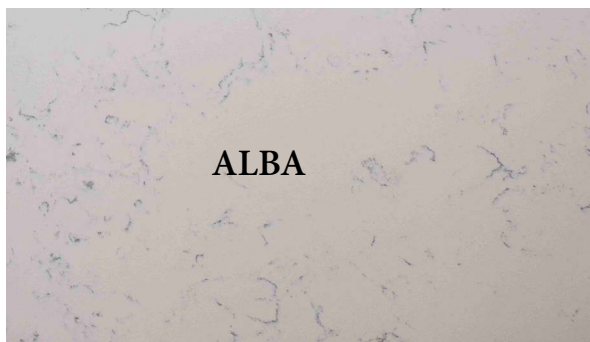
The Pros:

- Classic, timeless beauty, and a white brightness not available in granite or soapstone.
- Marble is wonderful for working with pastry, since it is naturally cool; it doesn't conduct heat very well.
- While some rarer types of marble are very expensive, the more common Carrara (also called Carrera) marble is one of the least expensive natural countertops.
- Unlike some quartz and the harder-to-find quartzite, marble is available from nearly any stone fabricator or stone yard.

The Cons:

- Scratching - Marble can scratch easily, especially when touched for a long period of time by something acidic. A slice of lemon laid down on a polished countertop overnight can leave a mark in the shape of the lemon slice, duller than the surface around it.
- Staining - Marble can also stain; red wine and some fruits are infamous for leaving indelible stains on the marble.

Ceramic is a relatively new worktop material to the market which is making some ripples due to its virtual indestructibility and near immunity to scratches, stains and heat damage.



The Pros:

- Completely maintenance free.
- Can be crafted to a very thin cut, perfect for those in the market for a minimalist look.
- An awe-inspiring range of colours and textures, giving the designer a huge amount of options when customising your kitchen.

The Cons:

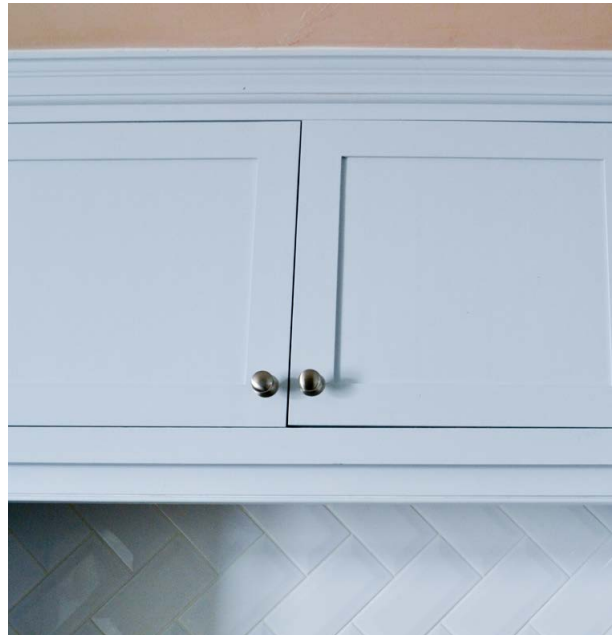
- It's very expensive, due to its current exclusiveness, costing up to 20% more than granite and quartz. However, as it becomes more common, we'd expect this price to come down in price closer to granite and quartz.



OUR COLLECTIONS































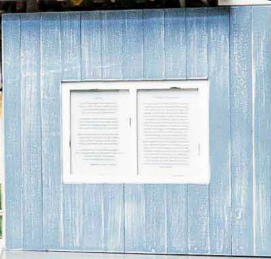


The TEA of LIFE
No flavor was so ELEGANT as pure
as intense, that all who came before
KNEW in HONOR as they drank the
PURE DELICIOUSNESS of LIFE

The COFFEE of JOY
And those who sipped this pure
and PLEASANT gift, were filled
with such ELEGANCE that
HEARTS could burst with

The SUGAR of DELIGHT
So sometimes we do something
we think that makes us happy
and then we'll begin to
with DELIGHT

Kellogg's
CORN
FLAKES
CORN
FLAKES



THE DESIGN PROCESS

Probably the best place to start the search for your new kitchen is in our showroom in the heart of Southsea. Come down and pay us a visit, have a coffee and speak to one of our knowledgeable staff. Our showroom is based close to the main Southsea shopping precinct where you'll find some fantastic café's and unique boutique shops, selling a variety of hand crafted and individually designed goods. If you can't come to us, then don't worry! We will come to you. Just call us on 02392 812835 or email us at sales@victoriansouthsea.co.uk



Your Kitchen, from Start to Finish.

At Victoriana we understand that every client is unique, some will be ready to go, every detail planned with military precision. Others may be more abstract in their design ideas with no firm finish date in mind. Below we've tried to include a basic timeline for how most of our kitchens progress, but this can be altered to suit the individual needs of the client.

Stage 1: Planning.

When you're ready to start planning your new kitchen come in to our showroom in Southsea for a drink and walkthrough of our display kitchen where we can show you through the different styles and options available. If you're happy, we will then arrange an appointment with one of our experienced designers who will arrange a time to come and visit you in your home. If you can't make it into the shop, contact us via our website, phone or email and we can come to you.

Stage 2: Home visit and quote.

This is where you get those imaginative juices flowing! If you're one of those people that know what they want, then this stage won't take long. If, however you need a little design inspiration, this is where your designer's knowledge and experience is on hand to help. They will take you through the options and take all the measurements we require to design your kitchen. This consultation can take up to 2 hours, but if you need longer don't worry, we won't rush you.

Your designer will then go away and start drawing up the plans. Unlike many kitchen companies, we still hand draw our kitchen plans the old-fashioned way. We've found that most of our customers find these easier to understand than the computer generated technical drawings that can sometimes be confusing. However, if you prefer your drawings to be in a digital format, this can also be arranged. We will then work out a quote which we will contact you with.

Stage 3: Sign-off and Deposit.

If you're happy with your quote and drawings, this is where you sign off and they go into build. We understand that often, there are various tweaks and changes that you'd like adjusting before your kitchen gets built and at this stage you and your designer can go through everything and make any changes you require. If you are happy to proceed we will require a 20% deposit to process your order and for you to sign off your drawings to say you are

happy.

If you'd like a copy of the drawings we can provide these at a cost of £300, this amount will be deducted from the cost of the kitchen should you decide to go ahead.

We have a range of finance options available to spread the cost of your kitchen over a period of up to 5 years. If you'd like us to arrange this please speak to your designer who will be happy to do this for you.

Stage 4: The build, delivery & fitting.

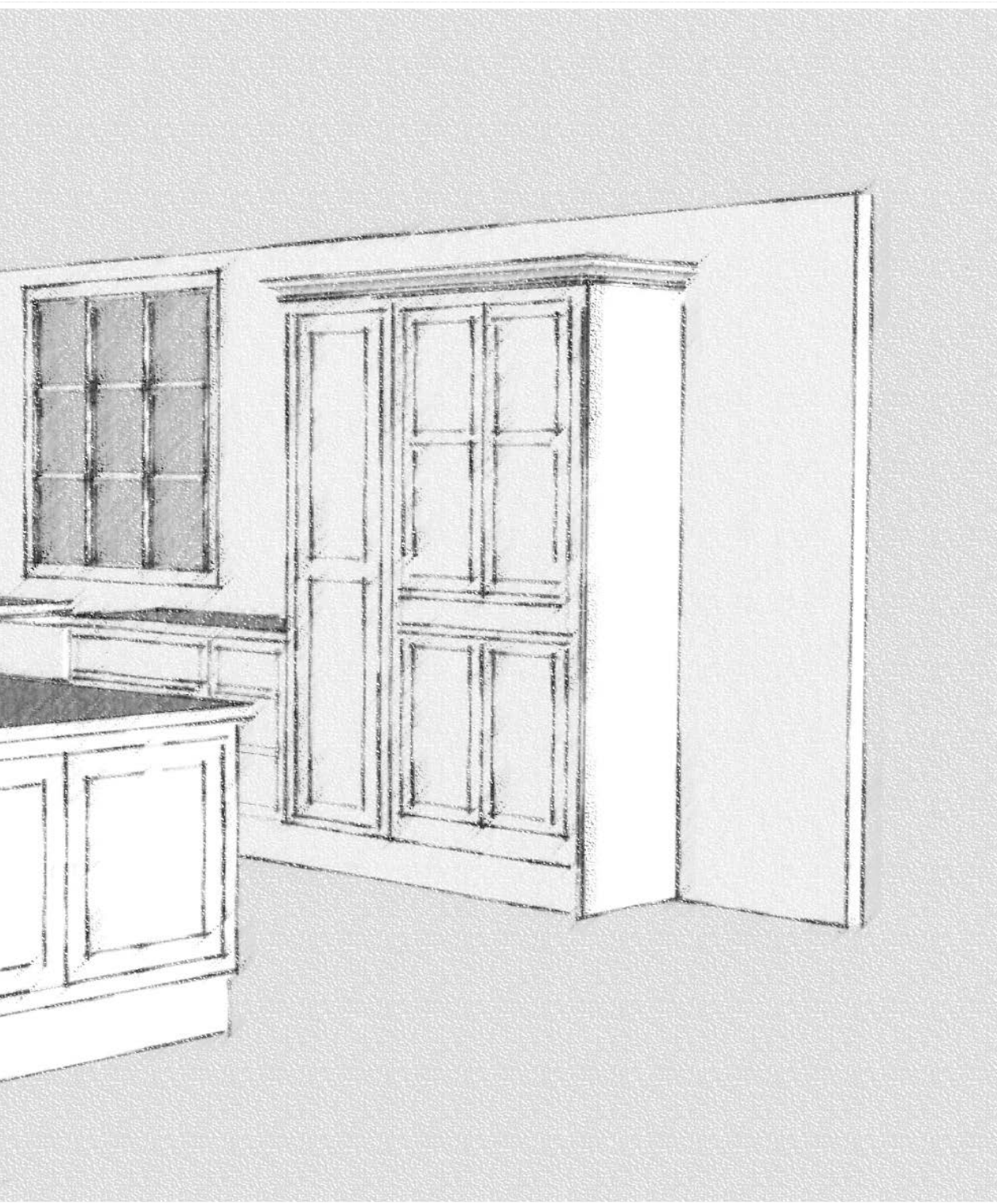
The build time for our kitchens is approximately 6-8 weeks which is standard for bespoke kitchen cabinetry. Once your kitchen has been inspected and packaged, we will contact you to arrange a date and time to deliver. We will require that the remainder of your balance be paid at this time.

If you've chosen us to fit the kitchen for you, the schedule for the works will be arranged during this stage. We can provide a quote for our fitting service during the design stage and if you have opted for this service our fitter will then take over after the kitchen has been delivered to you. They will fit your units, sink, taps and worktops and basic plumbing works such as fitting the drainage system in the sink. We can also arrange for more complex building services such as gas fitting and electrical work by request.

Stage 5: Finishing touches

You should now be reaching the end of your kitchen journey. At this stage we will visit you in your home and ensure you are happy with all the aspects of your new kitchen. If there are any snags you've noticed, or you'd like any information on how to care for your new kitchen, then our designer will be happy to go through everything with you. If you're happy to, we will also send a photographer round at this stage to take photos of your kitchen to place on our website.

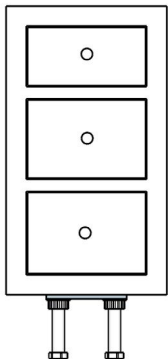




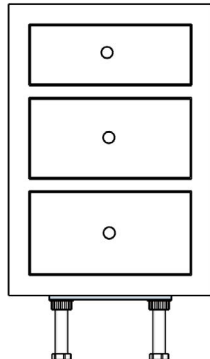
The Shaker Collection

BASE CABINETS

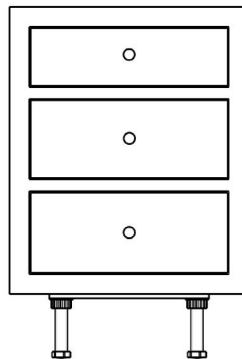
All Door Base Units are supplied with one adjustable shelf.



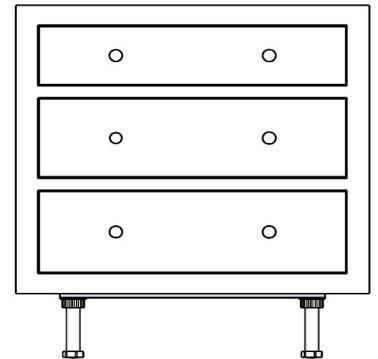
400 Three Drawer Base Unit
H- 860 W- 400 D- 600 (mm)
Oak: £910 Painted: £780 Pine: £640



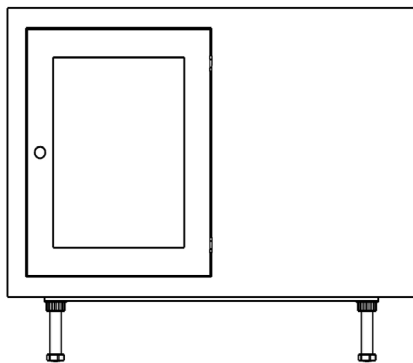
500 Three Drawer Base Unit
H- 860 W- 500 D- 600 (mm)
Oak: £930 Painted: £840 Pine: £690



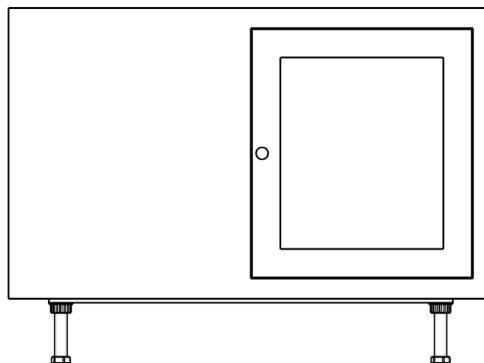
600 Three Drawer Base Unit
H- 860 W- 600 D- 600 (mm)
Oak: £990 Painted: £880 Pine: £710



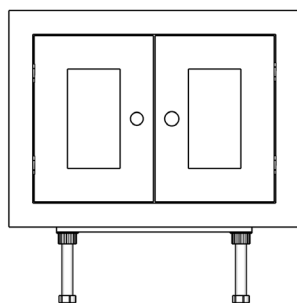
800 Three Drawer Base Unit
H- 860 W- 800 D- 600 (mm)
Oak: £1050 Painted: £890 Pine: £830



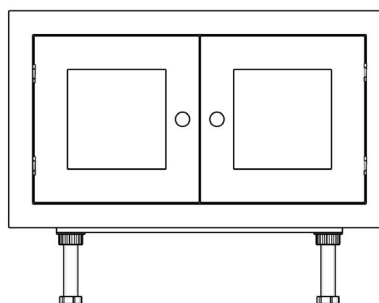
1100 Corner Base Unit L/R
H- 860 W- 1100 D- 600 (mm)
Oak: £940 Painted: £690 Pine: £520



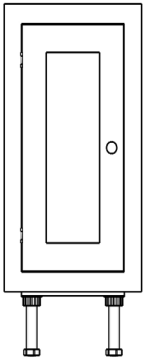
1200 Corner Base Unit L/R
H- 860 W- 1200 D- 600 (mm)
Oak: £980 Painted: £760 Pine: £590



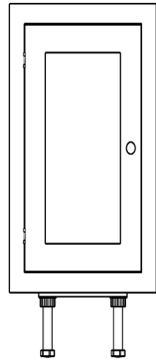
610 Sink Base Unit
H- 605 W- 610 D- 600 (mm)
Oak: £590 Painted: £520 Pine: £400



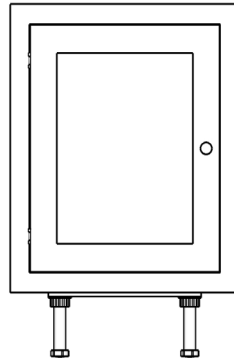
800 Sink Base Unit
H- 605 W- 800 D- 600 (mm)
Oak: £670 Painted: £590 Pine: £450



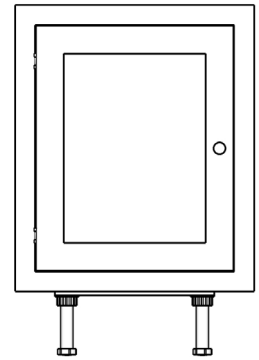
300 Door Base Unit L/R
H- 860 W- 300 D- 600 (mm)
Oak: £510 Painted: £440 Pine: £340



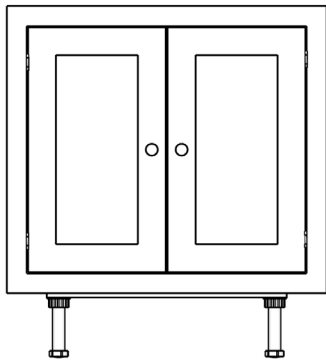
400 Door Base Unit L/R
H- 860 W- 400 D- 600 (mm)
Oak: £550 Painted: £460 Pine: £350



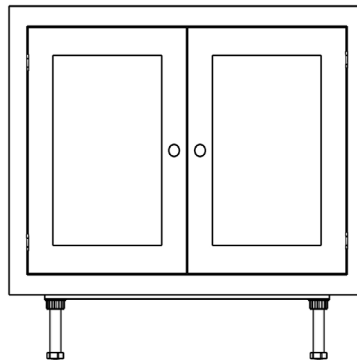
500 Door Base Unit L/R
H- 860 W- 500 D- 600 (mm)
Oak: £620 Painted: £480 Pine: £380



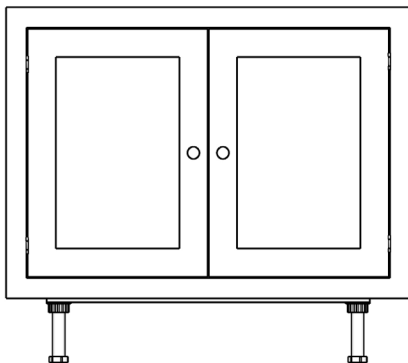
600 Door Base Unit L/R
H- 860 W- 600 D- 600 (mm)
Oak: £660 Painted: £520 Pine: £400



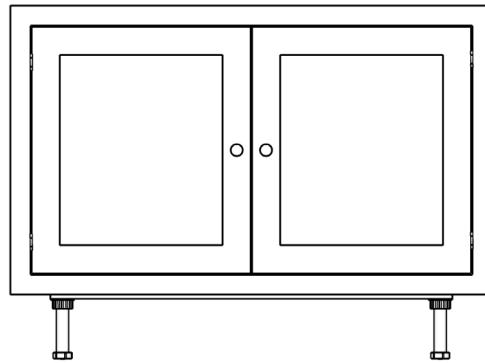
800 Door Base Unit
H- 860 W- 800 D- 600 (mm)
Oak: £800 Painted: £630 Pine: £480



900 Door Base Unit
H- 860 W- 900 D- 600 (mm)
Oak: £840 Painted: £660 Pine: £500



1000 Door Base Unit
H- 860 W- 1000 D- 600 (mm)
Oak: £840 Painted: £660 Pine: £500

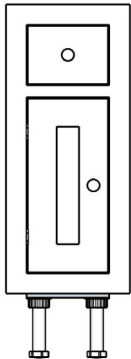


1200 Door Base Unit
H- 860 W- 1200 D- 600 (mm)
Oak: £890 Painted: £690 Pine: £530

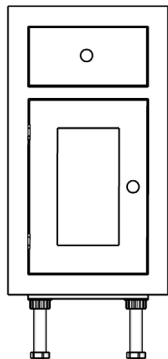
The Shaker Collection

BASE CABINETS

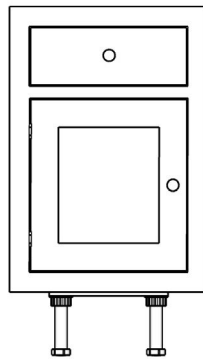
All Door Base Units are supplied with one adjustable shelf.



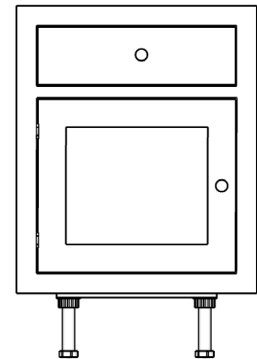
300 Door-Drawer Base Unit L/R
H- 860 W- 300 D- 600 (mm)
Oak: £630 Painted: £500 Pine: £390



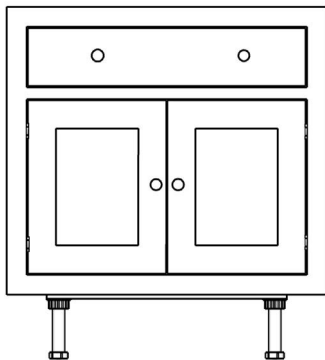
400 Door-Drawer Base Unit L/R
H- 860 W- 400 D- 600 (mm)
Oak: £670 Painted: £520 Pine: £410



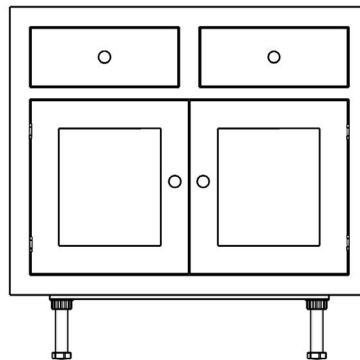
500 Door-Drawer Base Unit L/R
H- 860 W- 500 D- 600 (mm)
Oak: £730 Painted: £560 Pine: £430



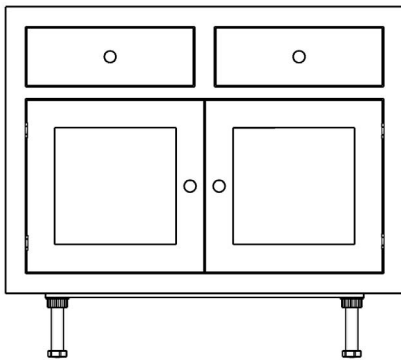
600 Door-Drawer Base Unit L/R
H- 860 W- 600 D- 600 (mm)
Oak: £790 Painted: £560 Pine: £440



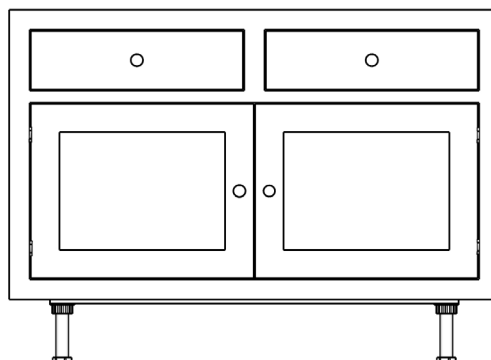
800 Door-Drawer Base Unit
H- 860 W- 800 D- 600 (mm)
Oak: £880 Painted: £660 Pine: £520



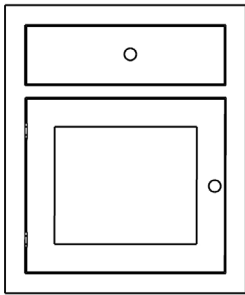
900 Door-Drawer Base Unit
H- 860 W- 900 D- 600 (mm)
Oak: £1020 Painted: £750 Pine: £600



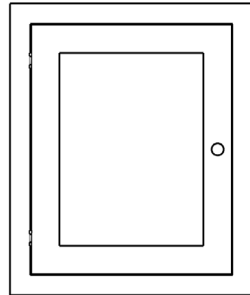
1000 Door-Drawer Base Unit
H- 860 W- 1000 D- 600 (mm)
Oak: £1050 Painted: £780 Pine: £620



1200 Door-Drawer Base Unit
H- 860 W- 1200 D- 600 (mm)
Oak: £1100 Painted: £830 Pine: £670



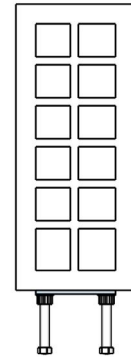
598 Appliance Door-Drawer
 H- 710 W- 598 D- 18 (mm)
 Oak: £150 Painted: £130 Pine: £110



598 Appliance Door L/R
 H- 710 W- 598 D- 18 (mm)
 Oak: £130 Painted: £120 Pine: £100

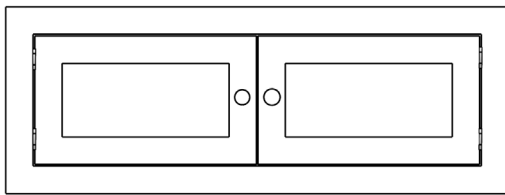


150 Wine Unit for 6 Bottles
 H- 860 W- 150 D- 600 (mm)
 Oak: £540 Painted: £280 Pine: £210

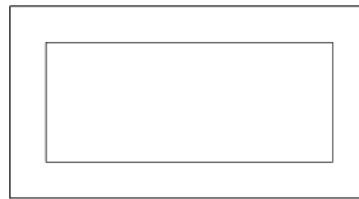


300 Wine Unit for 12 Bottles
 H- 860 W- 300 D- 600 (mm)
 Oak: £600 Painted: £510 Pine: £390

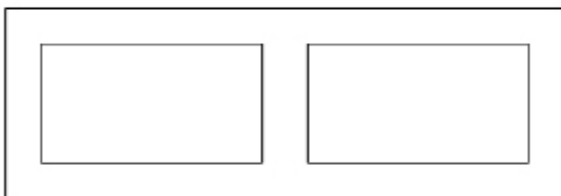
TOP BOXES



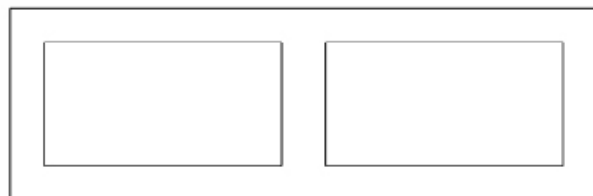
American Fridge Bridge
 H- 340 W- 920 D- 520 (mm)
 Oak: £560 Painted: £540 Pine: £370



700 Extractor Hood
 H- 400 W- 700 D- 400 (mm)
 Oak: £320 Painted: £280 Pine: £200



1100 Extractor Hood
 H- 400 W- 1100 D- 400 (mm)
 Oak: £400 Painted: £300 Pine: £230

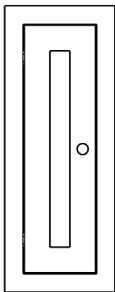


1200 Extractor Hood
 H- 400 W- 1200 D- 400 (mm)
 Oak: £440 Painted: £330 Pine: £260

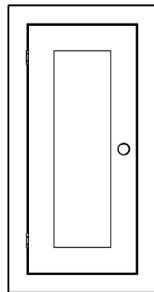
The Shaker Collection

WALL CABINETS

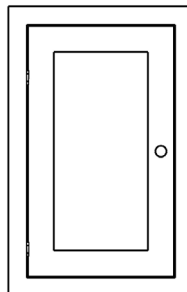
All Wall Units are supplied with two adjustable shelves.



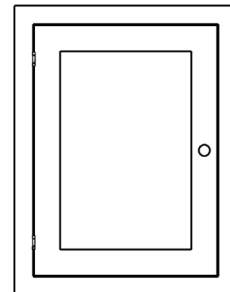
300 Door Wall Unit L/R
H- 780 W- 300 D- 350 (mm)
Oak: £430 Painted: £370 Pine: £290



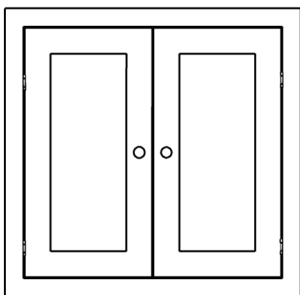
400 Door Wall Unit L/R
H- 780 W- 400 D- 350 (mm)
Oak: £480 Painted: £400 Pine: £300



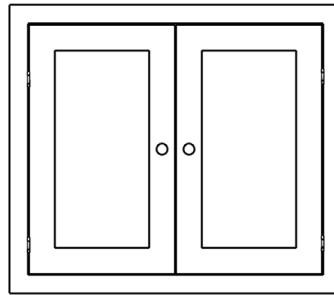
500 Door Wall Unit L/R
H- 780 W- 500 D- 350 (mm)
Oak: £500 Painted: £430 Pine: £330



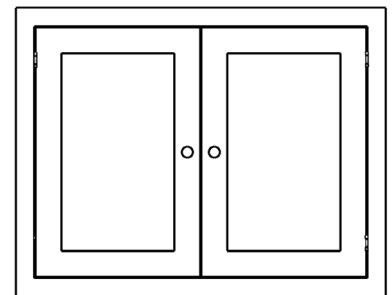
600 Door Wall Unit L/R
H- 780 W- 600 D- 350 (mm)
Oak: £540 Painted: £440 Pine: £340



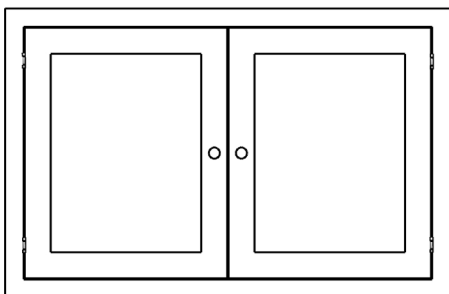
800 Door Wall Unit
H- 780 W- 800 D- 350 (mm)
Oak: £670 Painted: £560 Pine: £420



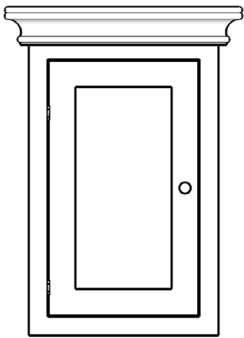
900 Door Wall Unit
H- 780 W- 900 D- 350 (mm)
Oak: £720 Painted: £580 Pine: £440



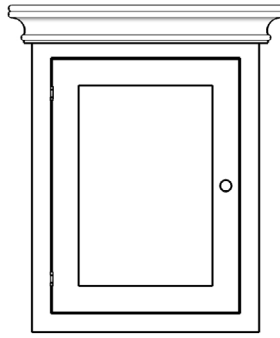
1000 Door Wall Unit
H- 780 W- 1000 D- 350 (mm)
Oak: £760 Painted: £600 Pine: £460



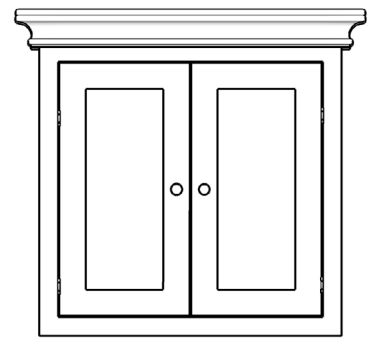
1200 Door Wall Unit
H- 780 W- 1200 D- 350 (mm)
Oak: £860 Painted: £650 Pine: £490



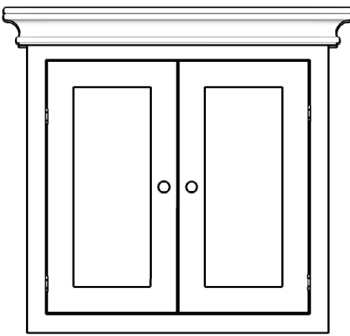
500 Freestanding Wall Unit L/R
 H- 780 W- 500 D- 350 (mm)
 Oak: £600 Painted: £480 Pine: £370



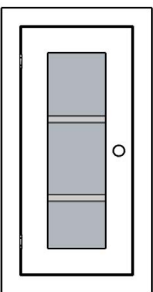
600 Freestanding Wall Unit L/R
 H- 780 W- 600 D- 350 (mm)
 Oak: £640 Painted: £490 Pine: £380



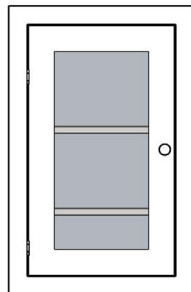
800 Freestanding Wall Unit L/R
 H- 780 W- 800 D- 350 (mm)
 Oak: £770 Painted: £610 Pine: £460



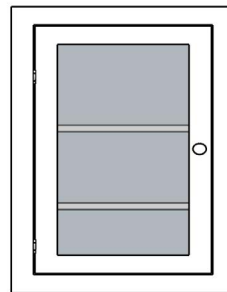
1000 Freestanding Wall Unit
 H- 850 W- 1000 D- 350 (mm)
 Oak: £860 Painted: £650 Pine: £500



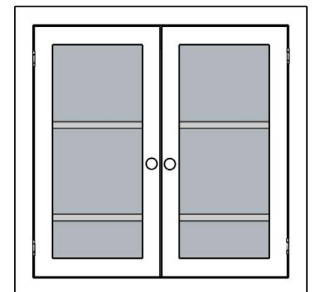
400 Glazed Door Unit L/R
 H- 780 W- 400 D- 350 (mm)
 Oak: £480 Painted: £400 Pine: £310



500 Glazed Door Unit L/R
 H- 780 W- 500 D- 350 (mm)
 Oak: £500 Painted: £420 Pine: £330

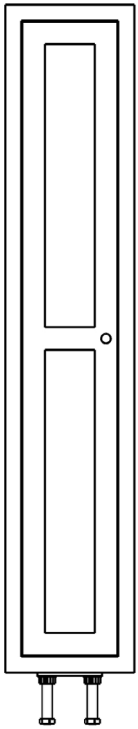


600 Glazed Door Unit L/R
 H- 780 W- 600 D- 350 (mm)
 Oak: £540 Painted: £440 Pine: £340

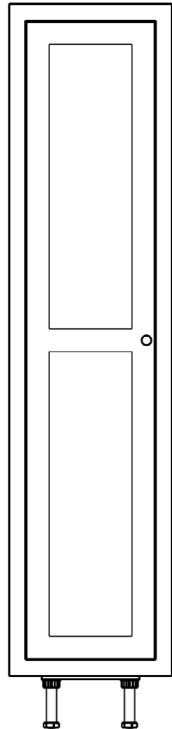


800 Glazed Door Unit
 H- 780 W- 800 D- 350 (mm)
 Oak: £690 Painted: £560 Pine: £430

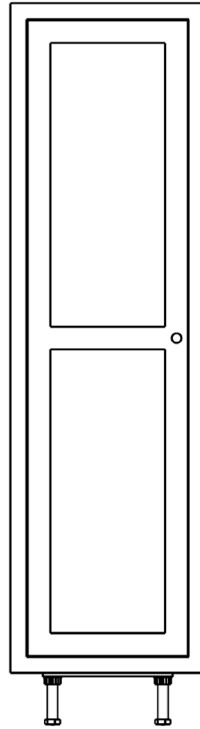
FULL HEIGHT CABINETS



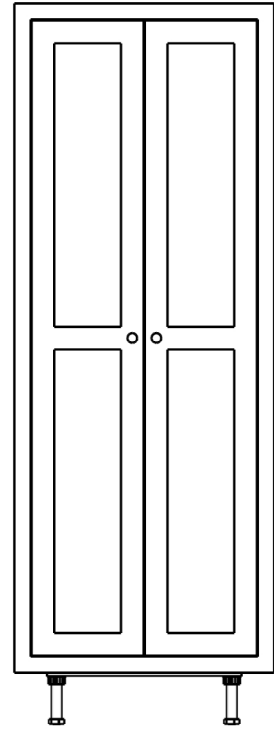
400 Housekeeping Cupboard L/R & 5 Shelves
 H- 2140 W- 400 D- 670 (mm)
Oak: £1200 Painted: £850 Pine: £670



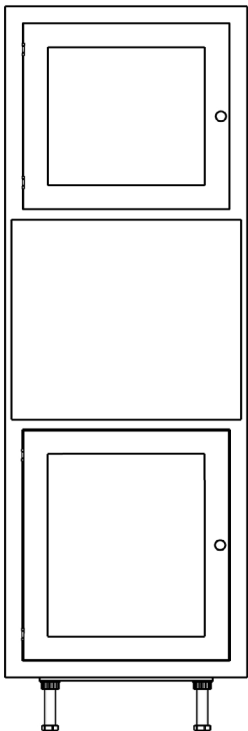
500 Housekeeping Cupboard L/R & 5 Shelves
 H- 2140 W- 500 D- 670 (mm)
Oak: £1280 Painted: £880 Pine: £700



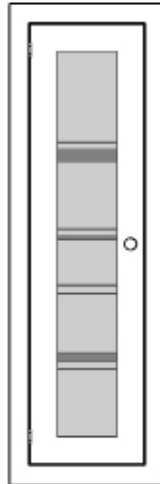
600 Housekeeping Cupboard L/R & 5 Shelves
 H- 2140 W- 600 D- 670 (mm)
Oak: £1380 Painted: £940 Pine: £750



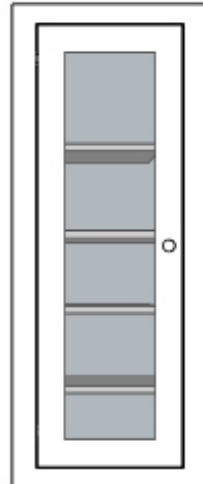
800 Housekeeping Cupboard L/R & 5 Shelves
 H- 2140 W- 800 D- 670 (mm)
Oak: £1700 Painted: £1050 Pine: £970



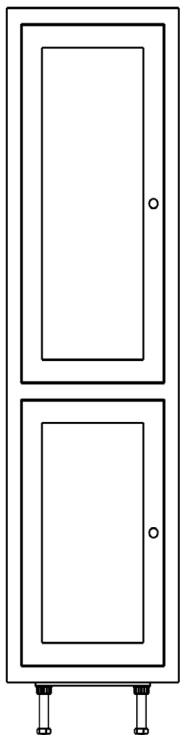
Oven & Microwave Tower Unit L/R
 H- 2140 W- 600 D- 600 (mm)
Oak: £1230 Painted: £910 Pine: £740



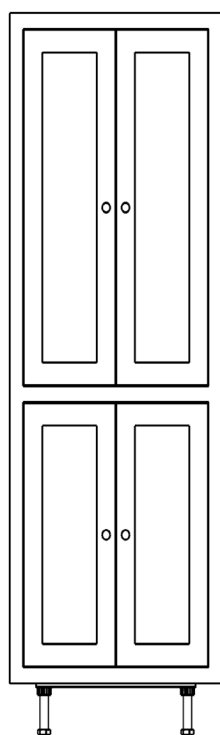
400 Glazed Worktop Unit L/R
 H- 1240 W- 400 D- 350 (mm)
Oak: £600 Painted: £480 Pine: £360



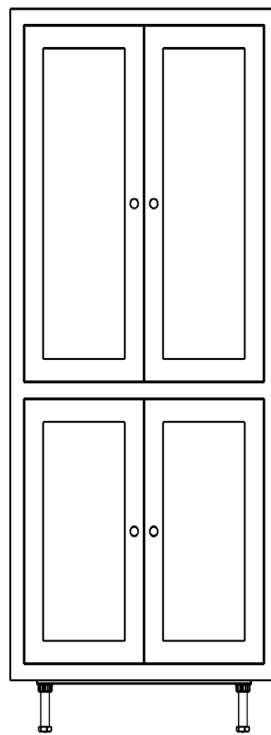
500 Glazed Worktop Unit L/R
 H- 1240 W- 500 D- 350 (mm)
Oak: £640 Painted: £530 Pine: £410



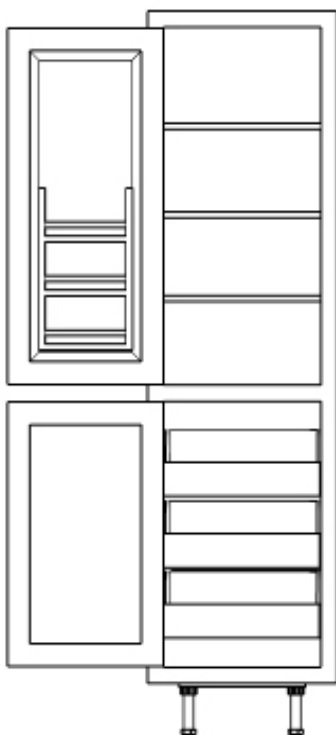
600 Larder Cupboard (inc Spice L/R
Rack & 3 Pullout Slides)
H- 2140 W- 600 D- 600 (mm)
Oak: £1550 Painted: £1090 Pine: £850



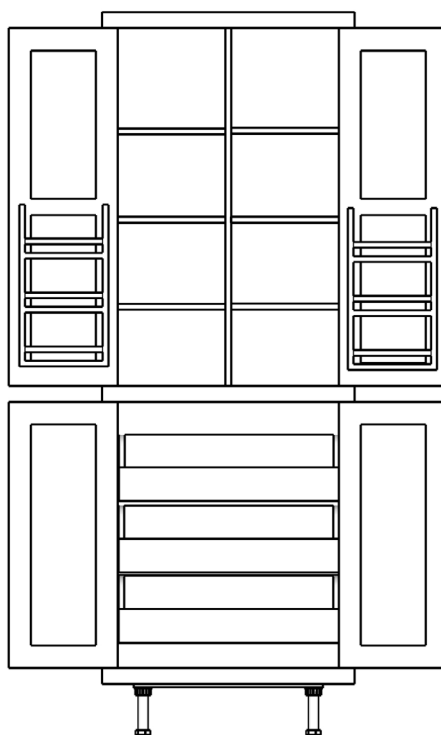
800 Larder Cupboard (inc Spice L/R
Rack & 3 Pullout Slides)
H- 2140 W- 800 D- 600 (mm)
Oak: £1850 Painted: £1320 Pine: £1050



1000 Larder Cupboard (inc Spice L/R
Rack & 3 Pullout Slides)
H- 2140 W- 1000 D- 600 (mm)
Oak: £2000 Painted: £1350 Pine: £1070



Inside view of 600mm Larder



Inside view of 800mm and 1000mm Larder

Shaker Accessories:

Floor Height Plain End Pannel

H-860 W-18 D-600mm

Oak £90 Painted £60 Pine £50

Full Height Plain End Panel

H-2140 W-18 D-600mm

Oak £280 Painted £190 Pine £130

Cornice - Price per meter

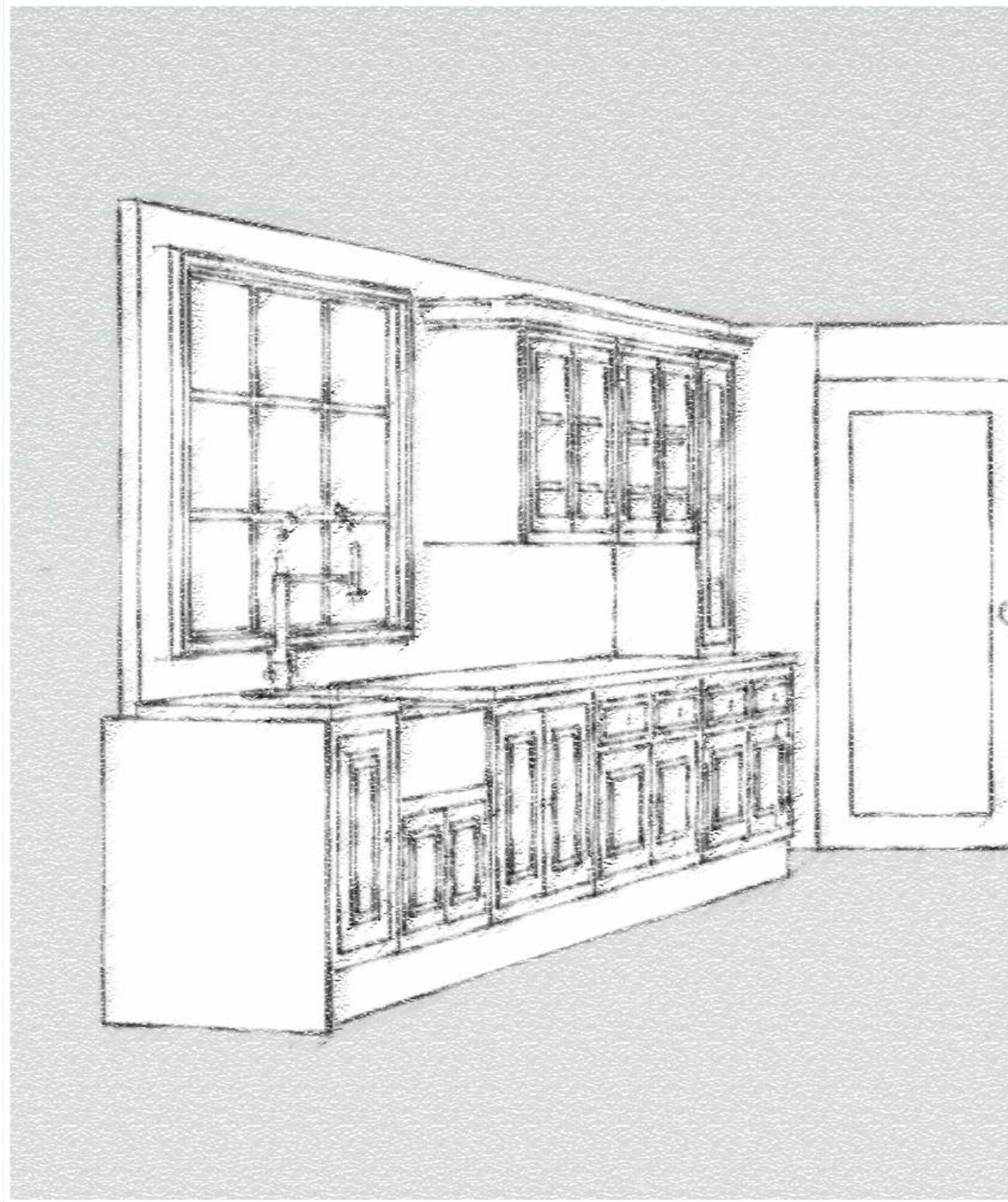
Oak £50 Painted £25 Pine £20

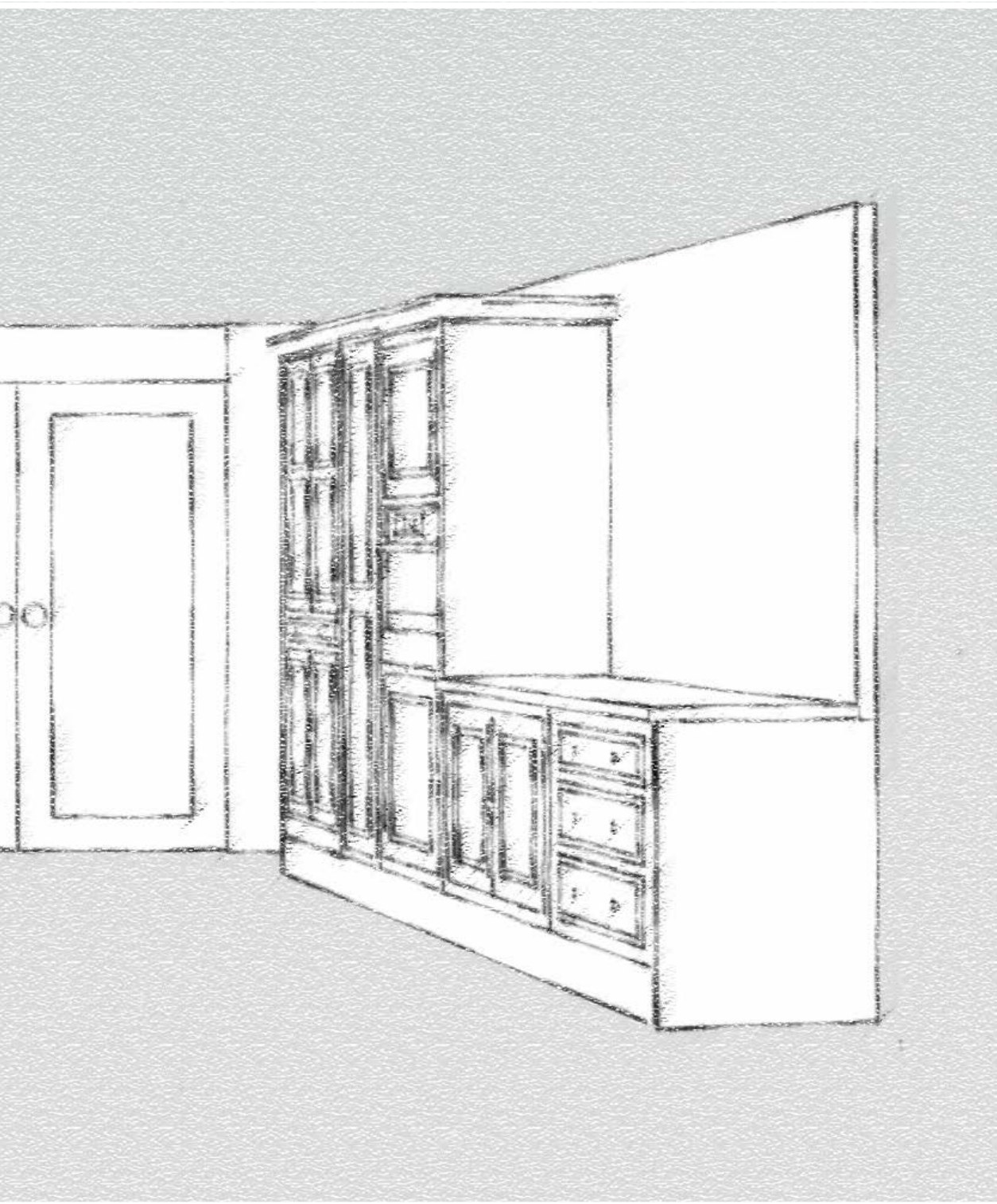
Plinth - Price per meter

Oak £40 Painted £30 Pine £20

Pelmet - Price per meter

Oak £50 Painted £25 Pine £20

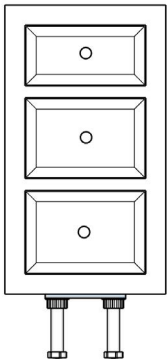




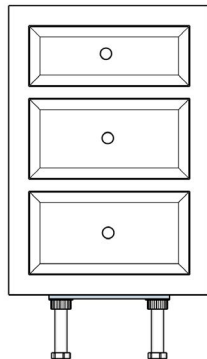
The Westminster Collection

BASE CABINETS

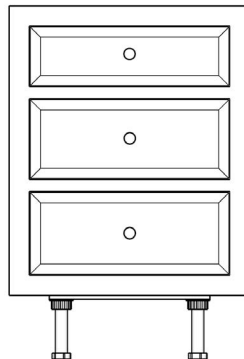
All Door Base Units are supplied with one adjustable shelf.



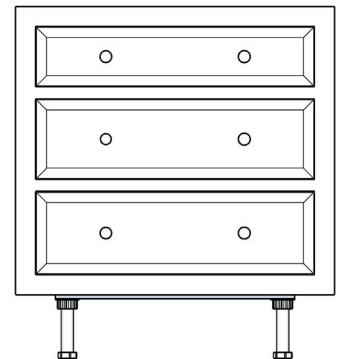
400 Three Drawer Base Unit
H- 860 W- 400 D- 600 (mm)
Oak: £940 Painted: £810 Pine: £670



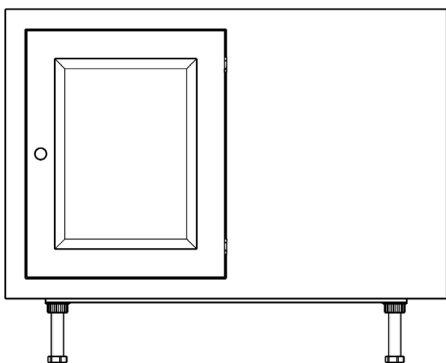
500 Three Drawer Base Unit
H- 860 W- 500 D- 600 (mm)
Oak: £960 Painted: £870 Pine: £720



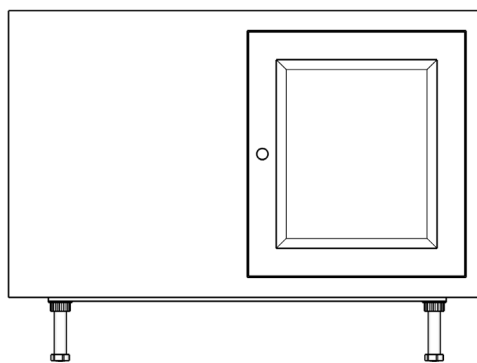
600 Three Drawer Base Unit
H- 860 W- 600 D- 600 (mm)
Oak: £1020 Painted: £910 Pine: £740



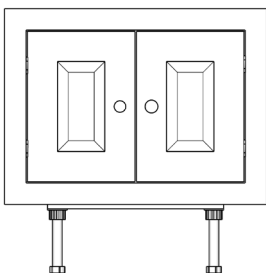
800 Three Drawer Base Unit
H- 860 W- 800 D- 600 (mm)
Oak: £1080 Painted: £920 Pine: £860



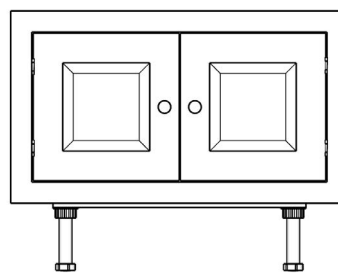
1100 Corner Base Unit L/R
H- 860 W- 1100 D- 600 (mm)
Oak: £960 Painted: £710 Pine: £540



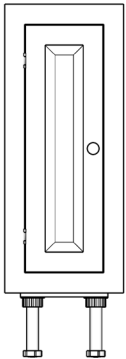
1200 Corner Base Unit L/R
H- 860 W- 1200 D- 600 (mm)
Oak: £1000 Painted: £780 Pine: £610



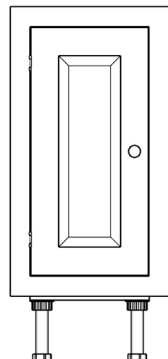
610 Sink Base Unit
H- 605 W- 610 D- 600 (mm)
Oak: £630 Painted: £560 Pine: £440



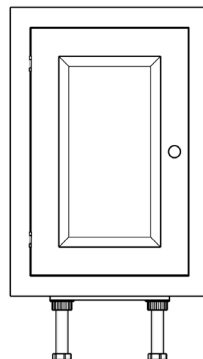
800 Sink Base Unit
H- 605 W- 800 D- 600 (mm)
Oak: £710 Painted: £630 Pine: £490



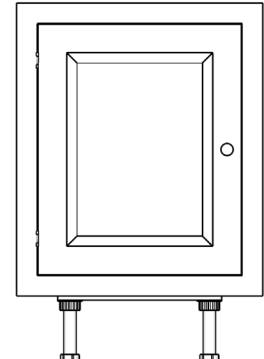
300 Door Base Unit L/R
H- 860 W- 300 D- 600 (mm)
Oak: £530 Painted: £460 Pine: £360



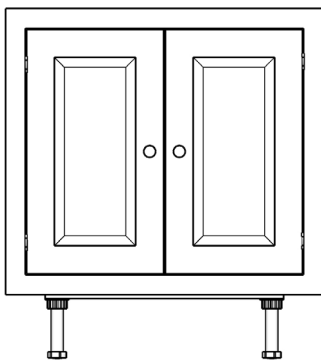
400 Door Base Unit L/R
H- 860 W- 400 D- 600 (mm)
Oak: £570 Painted: £480 Pine: £370



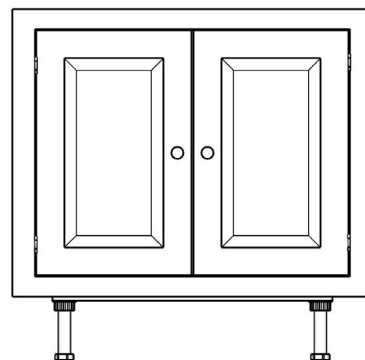
500 Door Base Unit L/R
H- 860 W- 500 D- 600 (mm)
Oak: £640 Painted: £500 Pine: £400



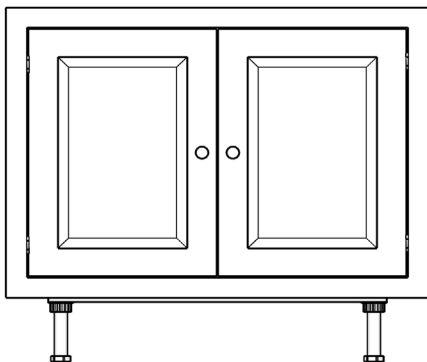
600 Door Base Unit L/R
H- 860 W- 600 D- 600 (mm)
Oak: £680 Painted: £540 Pine: £420



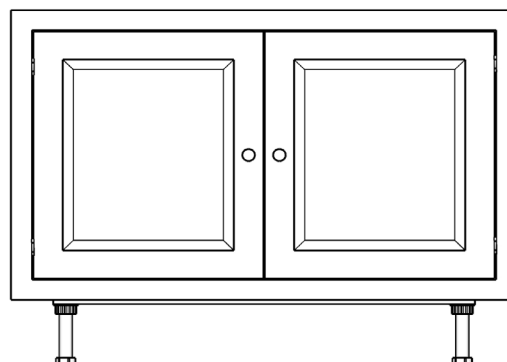
800 Door Base Unit
H- 860 W- 800 D- 600 (mm)
Oak: £840 Painted: £670 Pine: £520



900 Door Base Unit
H- 860 W- 900 D- 600 (mm)
Oak: £880 Painted: £700 Pine: £540



1000 Door Base Unit
H- 860 W- 1000 D- 600 (mm)
Oak: £880 Painted: £700 Pine: £540

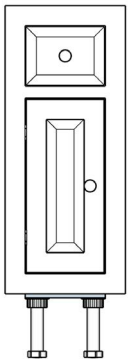


1200 Door Base Unit
H- 860 W- 1200 D- 600 (mm)
Oak: £930 Painted: £730 Pine: £570

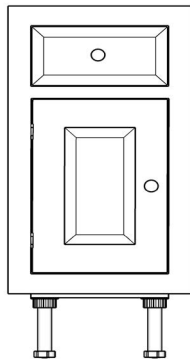
The Westminster Collection

BASE CABINETS

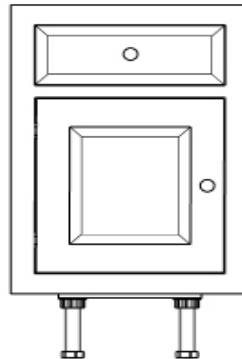
All Door Base Units are supplied with one adjustable shelf.



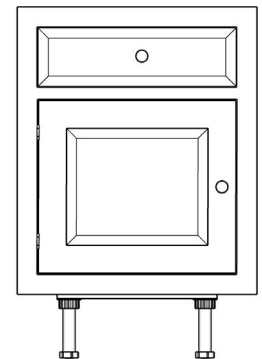
300 Door-Drawer Base Unit L/R
H- 860 W- 300 D- 600 (mm)
Oak: £660 Painted: £530 Pine: £420



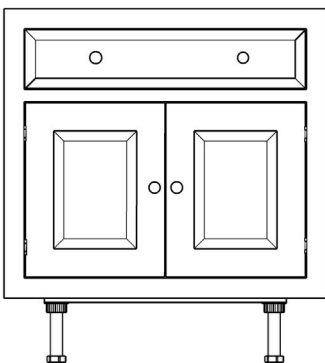
400 Door-Drawer Base Unit L/R
H- 860 W- 400 D- 600 (mm)
Oak: £700 Painted: £550 Pine: £440



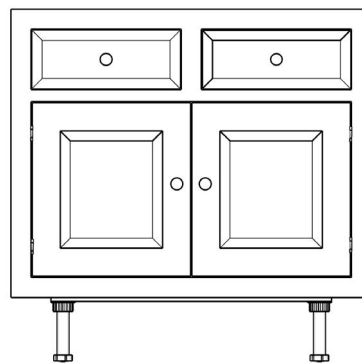
500 Door-Drawer Base Unit L/R
H- 860 W- 500 D- 600 (mm)
Oak: £760 Painted: £590 Pine: £460



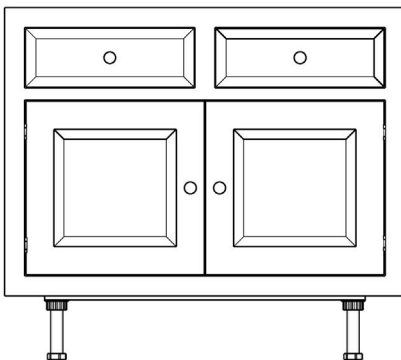
600 Door-Drawer Base Unit L/R
H- 860 W- 600 D- 600 (mm)
Oak: £820 Painted: £590 Pine: £470



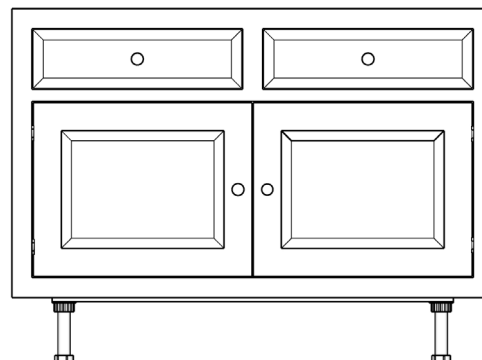
800 Door-Drawer Base Unit
H- 860 W- 800 D- 600 (mm)
Oak: £930 Painted: £710 Pine: £570



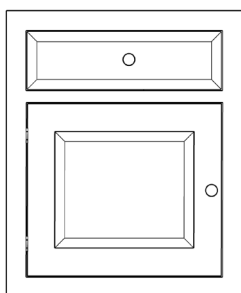
900 Door-Drawer Base Unit
H- 860 W- 900 D- 600 (mm)
Oak: £1080 Painted: £810 Pine: £660



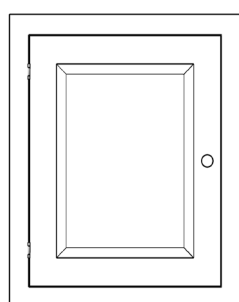
1000 Door-Drawer Base Unit
H- 860 W- 900 D- 600 (mm)
Oak: £1100 Painted: £840 Pine: £680



1200 Door-Drawer Base Unit
H- 860 W- 1200 D- 600 (mm)
Oak: £1160 Painted: £890 Pine: £730



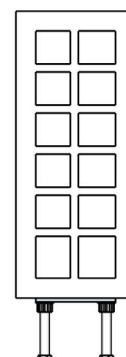
598 Appliance Door-Drawer
 H- 710 W- 598 D- 18 (mm)
Oak: £180 Painted: £160 Pine: £140



598 Appliance Door L/R
 H- 710 W- 598 D- 18 (mm)
Oak: £150 Painted: £140 Pine: £120

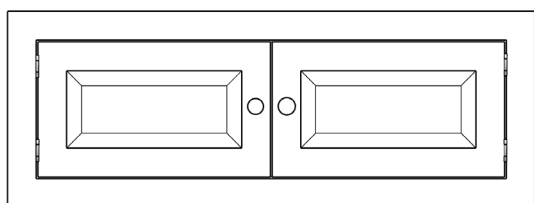


150 Wine Unit for 6 Bottles
 H- 860 W- 150 D- 600 (mm)
Oak: £540 Painted: £280 Pine: £210

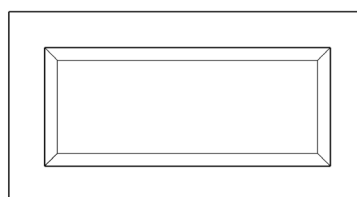


300 Wine Unit for 12 Bottles
 H- 860 W- 300 D- 600 (mm)
Oak: £600 Painted: £510 Pine: £390

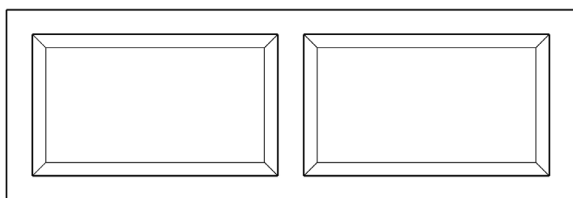
TOP BOXES



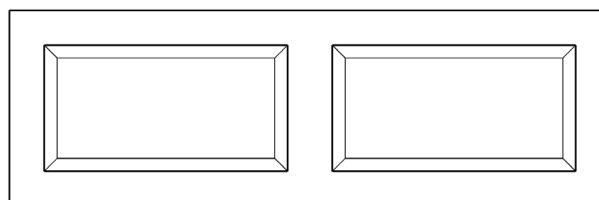
American Fridge Bridge
 H- 340 W- 920 D- 520 (mm)
Oak: £600 Painted: £580 Pine: £410



700 Extractor Hood Cover
 H- 400 W- 700 D- 400 (mm)
Oak: £340 Painted: £300 Pine: £220



1100 Extractor Hood Cover
 H- 400 W- 1100 D- 400 (mm)
Oak: £420 Painted: £320 Pine: £250

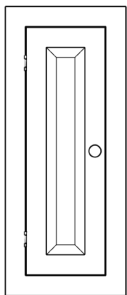


1200 Extractor Hood Cover
 H- 400 W- 1200 D- 400 (mm)
Oak: £460 Painted: £350 Pine: £280

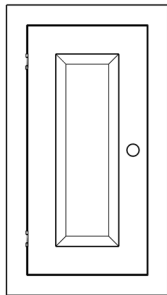
The Westminster Collection

WALL CABINETS

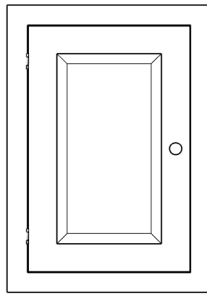
All Wall Units are supplied with two adjustable shelves.



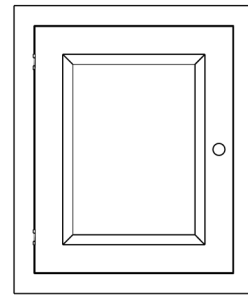
300 Door Wall Unit L/R
H- 780 W- 300 D- 350 (mm)
Oak: £450 Painted: £390 Pine: £310



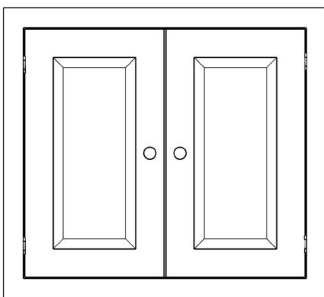
400 Door Wall Unit L/R
H- 780 W- 400 D- 350 (mm)
Oak: £500 Painted: £420 Pine: £320



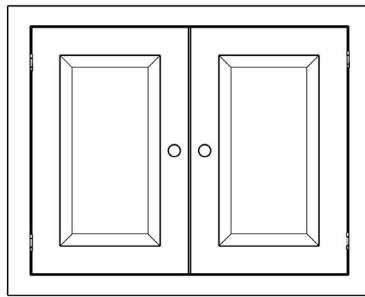
500 Door Wall Unit L/R
H- 780 W- 500 D- 350 (mm)
Oak: £520 Painted: £450 Pine: £350



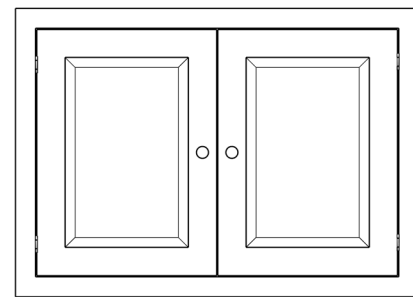
600 Door Wall Unit L/R
H- 780 W- 600 D- 350 (mm)
Oak: £560 Painted: £460 Pine: £360



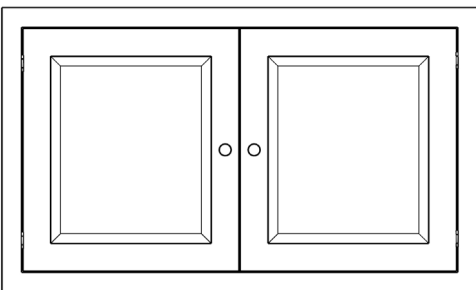
800 Door Wall Unit
H- 780 W- 800 D- 350 (mm)
Oak: £710 Painted: £600 Pine: £460



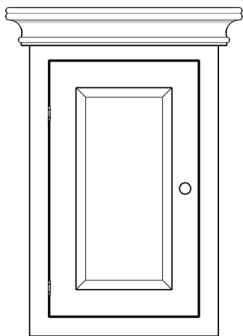
900 Door Wall Unit
H- 780 W- 900 D- 350 (mm)
Oak: £760 Painted: £620 Pine: £480



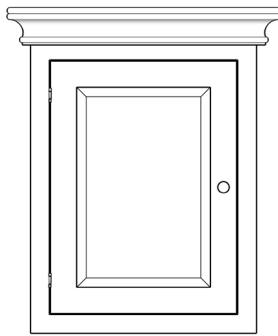
1000 Door Wall Unit
H- 780 W- 1000 D- 350 (mm)
Oak: £800 Painted: £640 Pine: £500



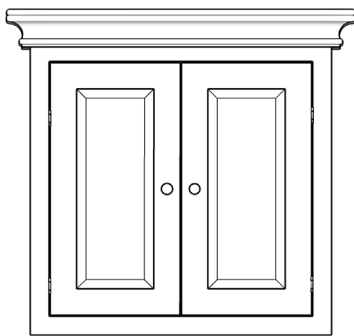
1200 Door Wall Unit
H- 780 W- 1200 D- 350 (mm)
Oak: £900 Painted: £690 Pine: £530



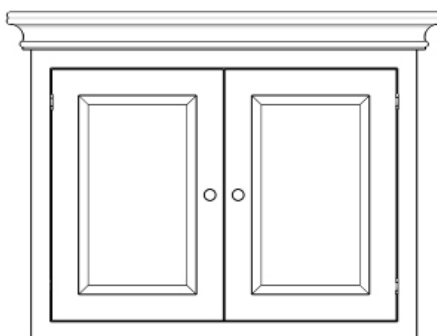
500 Freestanding Wall Unit L/R
 H- 780 W- 500 D- 350 (mm)
Oak: £620 Painted: £500 Pine: £390



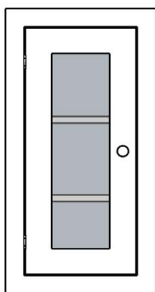
600 Freestanding Wall Unit L/R
 H- 780 W- 600 D- 350 (mm)
Oak: £660 Painted: £510 Pine: £400



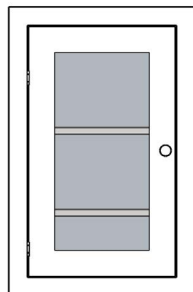
800 Freestanding Wall Unit
 H- 780 W- 800 D- 350 (mm)
Oak: £810 Painted: £650 Pine: £500



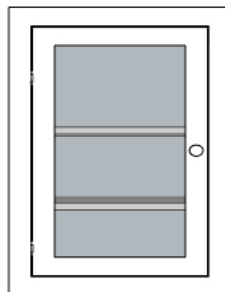
1000 Freestanding Wall Unit
 H- 850 W- 1000 D- 350 (mm)
Oak: £900 Painted: £690 Pine: £540



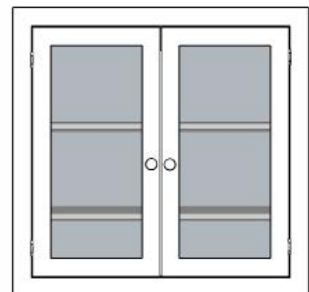
400 Glazed Door Unit L/R
 H- 780 W- 400 D- 350 (mm)
Oak: £480 Painted: £400 Pine: £310



500 Glazed Door Unit L/R
 H- 780 W- 500 D- 350 (mm)
Oak: £500 Painted: £420 Pine: £330



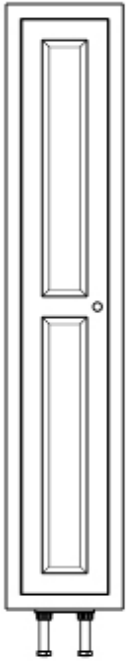
600 Glazed Door Unit L/R
 H- 780 W- 600 D- 350 (mm)
Oak: £540 Painted: £440 Pine: £340



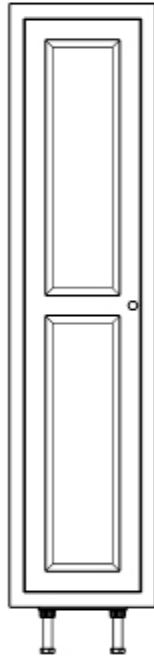
800 Glazed Door Unit
 H- 780 W- 800 D- 350 (mm)
Oak: £690 Painted: £560 Pine: £430

The Westminster Collection

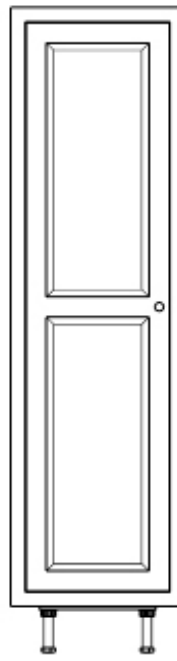
FULL HEIGHT CABINETS



400 Housekeeping Cupboard L/R & 5 Shelves
H- 2140 W- 400 D- 600 (mm)
Oak: £1240 Painted: £890 Pine: £710



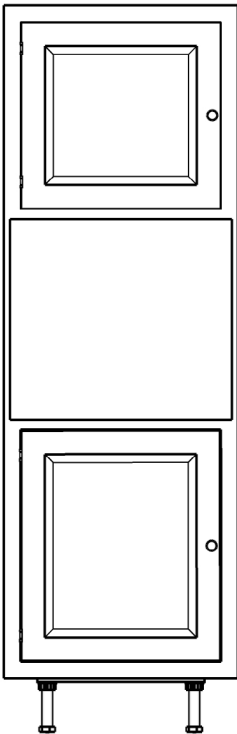
500 Housekeeping Cupboard L/R & 5 Shelves
H- 2140 W- 500 D- 600 (mm)
Oak: £1320 Painted: £920 Pine: £740



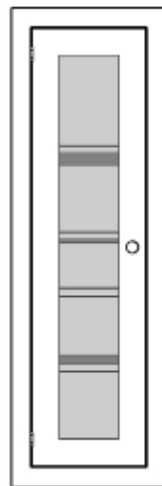
600 Housekeeping Cupboard L/R & 5 Shelves
H- 2140 W- 600 D- 600 (mm)
Oak: £1420 Painted: £980 Pine: £790



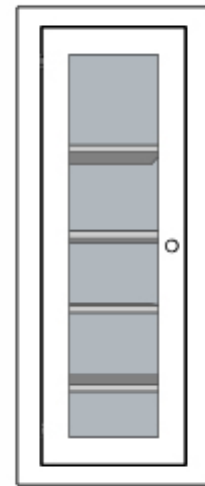
800 Housekeeping Cupboard & 5 Shelves
H- 2140 W- 800 D- 600 (mm)
Oak: £1780 Painted: £1130 Pine: £1050



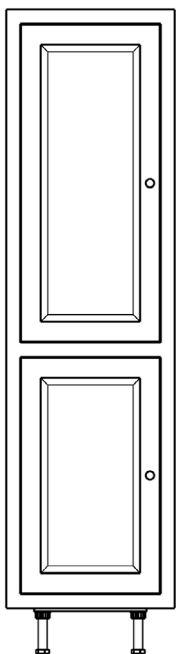
Oven & Microwave Tower Unit L/R
H- 2140 W- 600 D- 600 (mm)
Oak: £1270 Painted: £950 Pine: £710



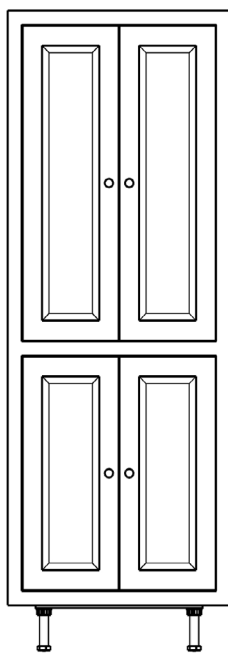
400 Glazed Worktop Unit L/R
H- 1240 W- 400 D- 350 (mm)
Oak: £600 Painted: £480 Pine: £360



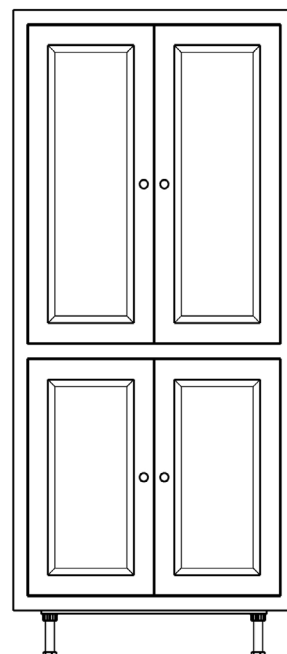
500 Glazed Worktop Unit L/R
H- 1240 W- 500 D- 350 (mm)
Oak: £640 Painted: £530 Pine: £410



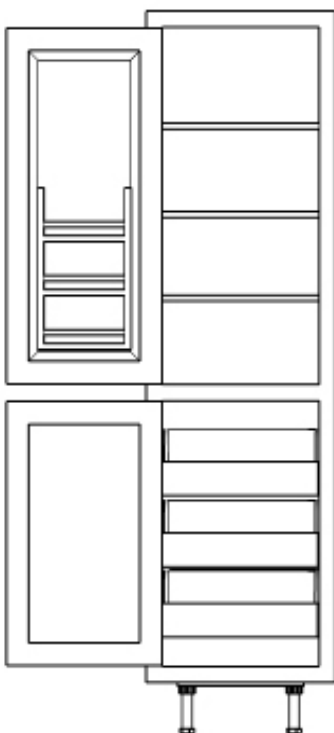
600 Larder Cupboard (inc Spice L/R Rack & 3 Pullout Slides)
 H- 2140 W- 600 D- 600 (mm)
 Oak: £1590 Painted: £1130 Pine: £890



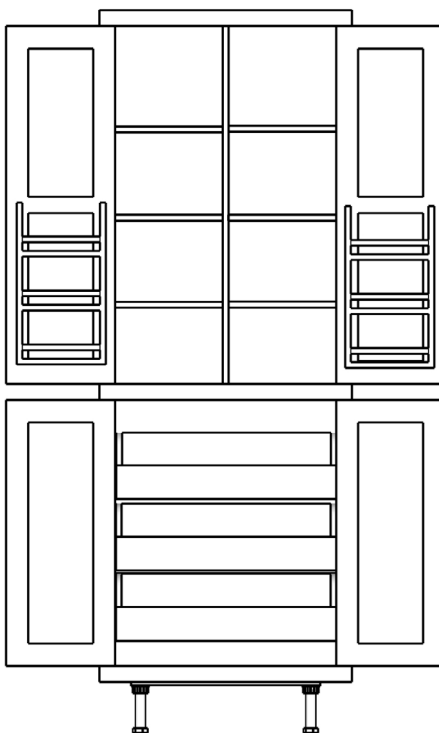
800 Larder Cupboard (inc Spice Rack & 3 Pullout Slides)
 H- 2140 W- 800 D- 600 (mm)
 Oak: £1930 Painted: £1400 Pine: £1130



1000 Larder Cupboard (inc Spice Rack & 3 Pullout Slides)
 H- 2140 W- 1000 D- 600 (mm)
 Oak: £2080 Painted: £1430 Pine: £1150



Inside view of 600mm Larder Cupboard



Inside view of 800mm & 1000mm Larder Cupboards

Westminster Accessories:

Floor Height Plain End Pannel

H-860 W-18 D-600mm

Oak £90 Painted £60 Pine £50

Full Height Plain End Panel

H-2140 W-18 D-600mm

Oak £280 Painted £190 Pine £130

Cornice - Price per meter

Oak £50 Painted £25 Pine £20

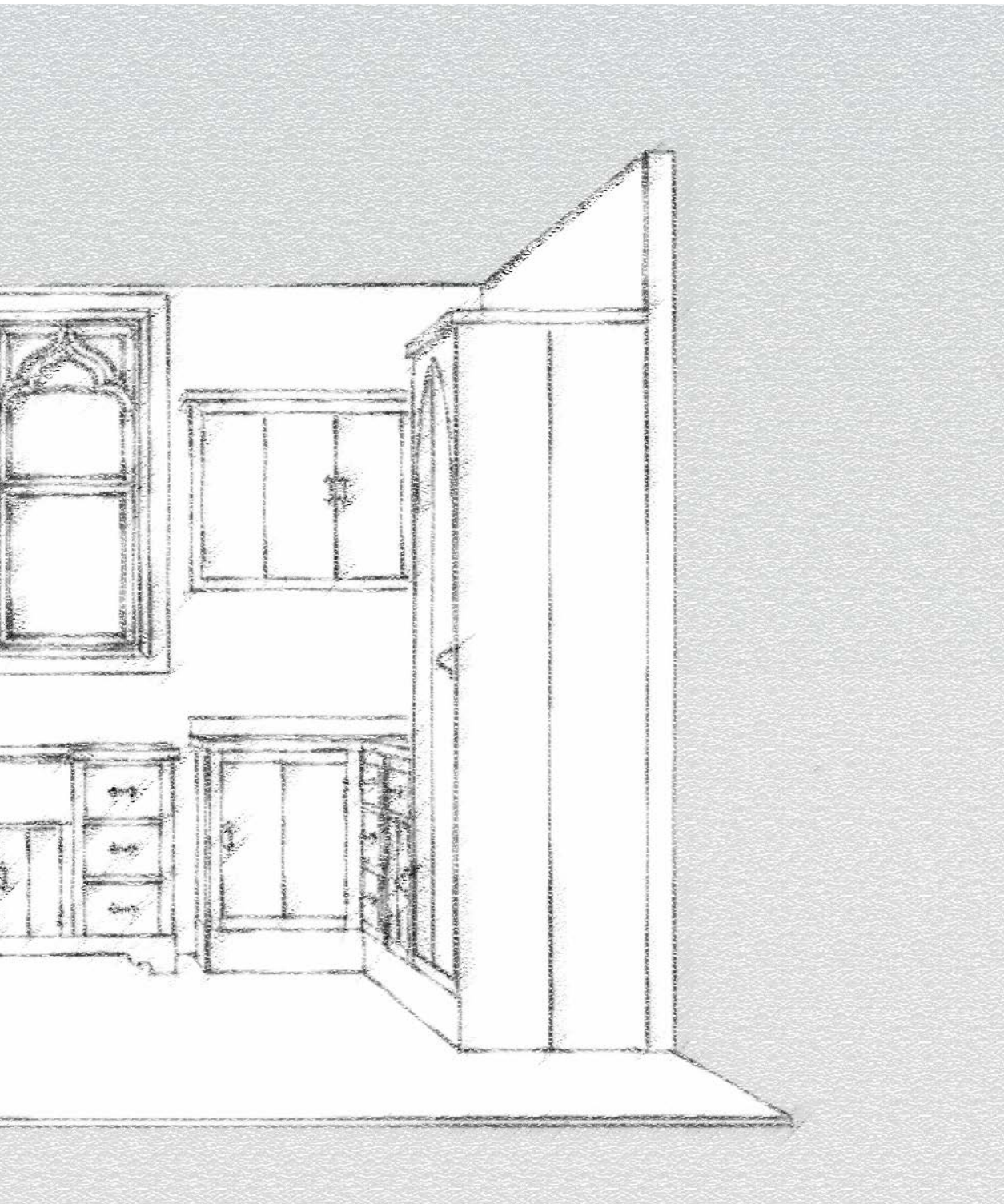
Plinth - Price per meter

Oak £40 Painted £30 Pine £20

Pelmet - Price per meter

Oak £50 Painted £25 Pine £20

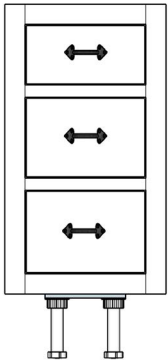




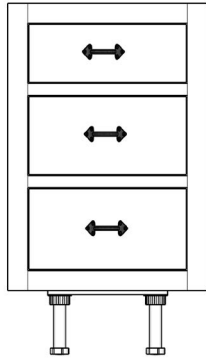
The Driftwood Collection

BASE CABINETS

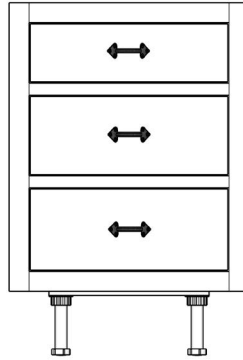
All Door Base Units are supplied with one adjustable shelf.



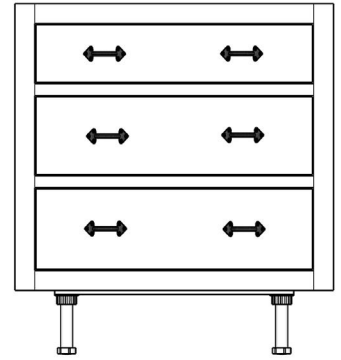
400 Three Drawer Base Unit
H- 860 W- 400 D- 600 (mm)
Painted Pine: £280 Pine: £240



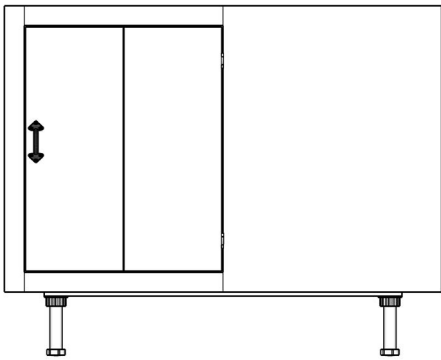
500 Three Drawer Base Unit
H- 860 W- 500 D- 600 (mm)
Painted Pine: £300 Pine: £260



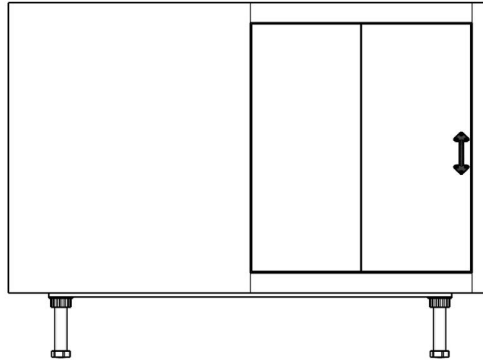
600 Three Drawer Base Unit
H- 860 W- 400 D- 600 (mm)
Painted Pine: £330 Pine: £290



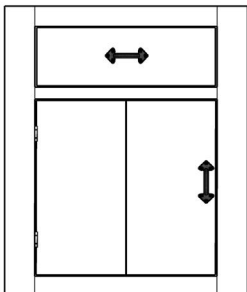
800 Three Drawer Base Unit
H- 860 W- 800 D- 600 (mm)
Painted Pine: £470 Pine: £410



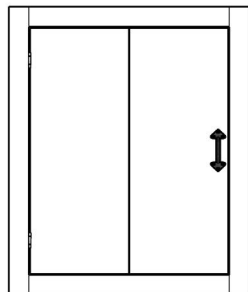
1100 Corner Base Unit L/R
H- 860 W- 1100 D- 600 (mm)
Painted Pine: £330 Pine: £290



1100 Corner Base Unit L/R
H- 860 W- 1100 D- 600 (mm)
Painted Pine: £350 Pine: £300



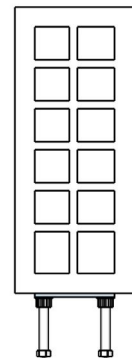
598 Appliance Door- Drawer
H- 710 W- 598 D- 18 (mm)
Painted Pine: £140 Pine: £120



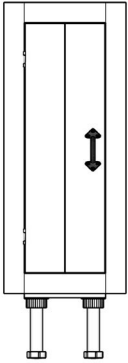
598 Appliance Door
H- 710 W- 598 D- 18 (mm)
Painted Pine: £120 Pine: £110



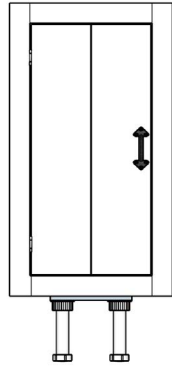
150 Wine Unit
H- 860 W- 150 D- 600 (mm)
Painted Pine: £160 Pine: £140



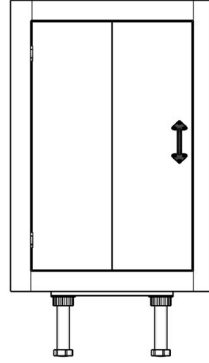
300 Wine Unit
H- 860 W- 300 D- 600 (mm)
Painted Pine: £180 Pine: £160



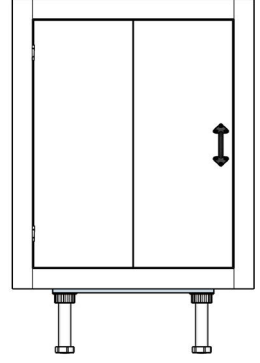
300 Door Base Unit L/R
 H- 860 W- 300 D- 600 (mm)
 Painted Pine: £160 Pine: £140



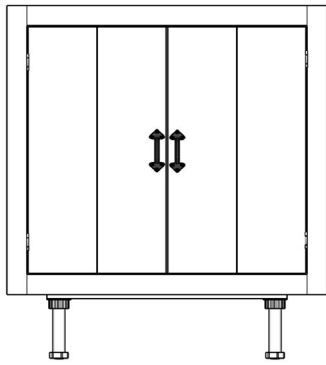
400 Door Base Unit L/R
 H- 860 W- 400 D- 600 (mm)
 Painted Pine: £180 Pine: £160



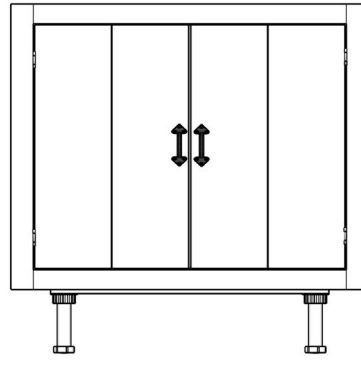
500 Door Base Unit L/R
 H- 860 W- 500 D- 600 (mm)
 Painted Pine: £190 Pine: £170



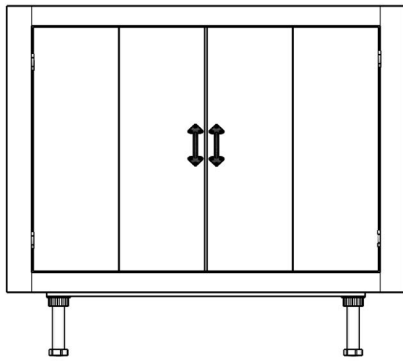
600 Door Base Unit L/R
 H- 860 W- 600 D- 600 (mm)
 Painted Pine: £210 Pine: £190



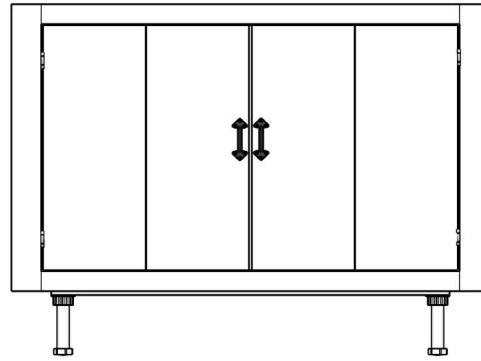
800 Door Base Unit
 H- 860 W- 800 D- 600 (mm)
 Painted Pine: £300 Pine: £260



900 Door Base Unit
 H- 860 W- 900 D- 600 (mm)
 Painted Pine: £330 Pine: £290



1000 Door Base Unit
 H- 860 W- 1000 D- 600 (mm)
 Painted Pine: £360 Pine: £320

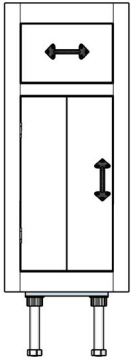


1200 Door Base Unit
 H- 860 W- 1200 D- 600 (mm)
 Painted Pine: £410 Pine: £360

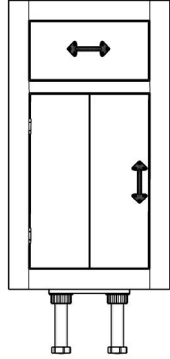
The Driftwood Collection

BASE CABINETS

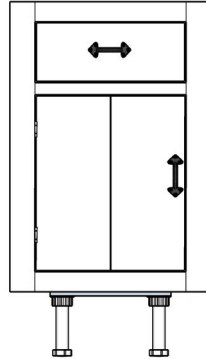
All Door Base Units are supplied with one adjustable shelf.



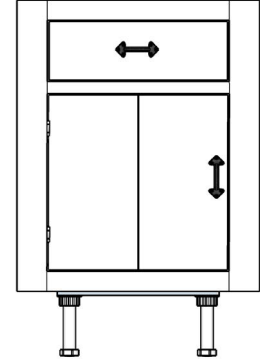
300 Door-Drawer Base UnitL/R
H- 860 W- 300 D- 600 (mm)
Painted Pine: £220 Pine: £190



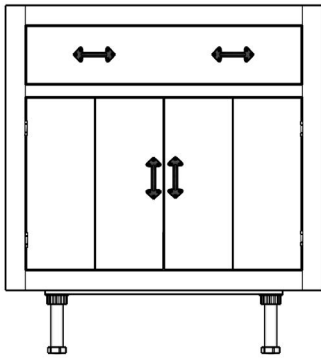
400 Door-Drawer Base UnitL/R
H- 860 W- 400 D- 600 (mm)
Painted Pine: £240 Pine: £210



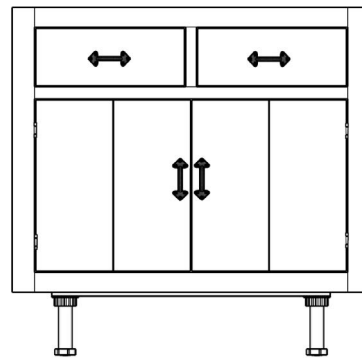
500 Door-Drawer Base UnitL/R
H- 860 W- 500 D- 600 (mm)
Painted Pine: £260 Pine: £230



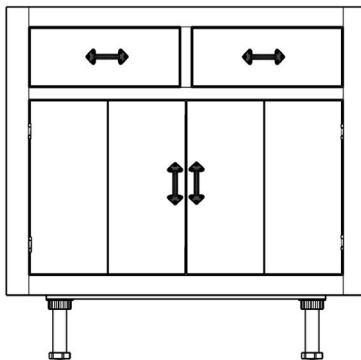
600 Door-Drawer Base UnitL/R
H- 860 W- 600 D- 600 (mm)
Painted Pine: £290 Pine: £250



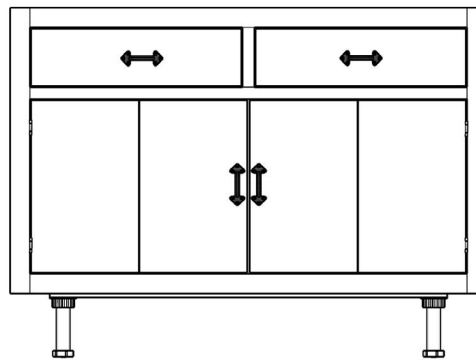
800 Door-Drawer Base Unit
H- 860 W- 800 D- 600 (mm)
Painted Pine: £390 Pine: £340



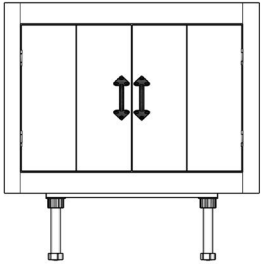
900 Door-Drawer Base Unit
H- 860 W- 900 D- 600 (mm)
Painted Pine: £430 Pine: £370



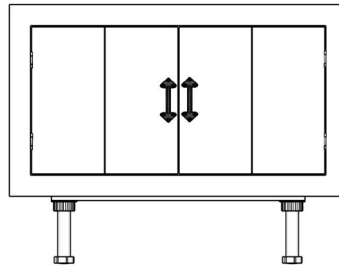
1000 Door-Drawer Base Unit
H- 860 W- 900 D- 600 (mm)
Painted Pine: £470 Pine: £410



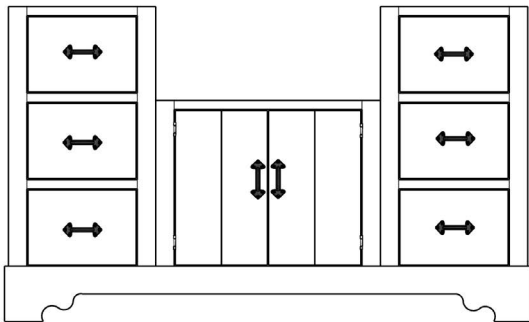
1200 Door-Drawer Base Unit
H- 860 W- 1200 D- 600 (mm)
Painted Pine: £560 Pine: £490



610 Belfast Sink Base Unit
H- 605 W- 610 D- 600 (mm)
Painted Pine: £250 Pine: £220



800 Belfast Sink Base Unit
H- 605 W- 800 D- 600 (mm)
Painted Pine: £280 Pine: £240

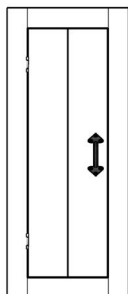


Freestanding Sink Base Unit
H- 605 W- 610 D- 600 (mm)
Painted Pine: £730 Pine: £658

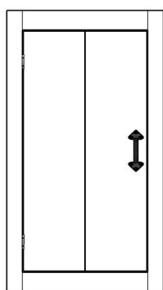
The Driftwood Collection

WALL CABINETS

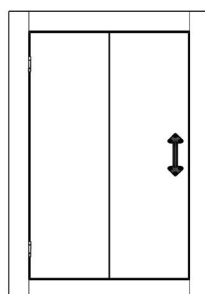
All Wall Units are supplied with two adjustable shelves.



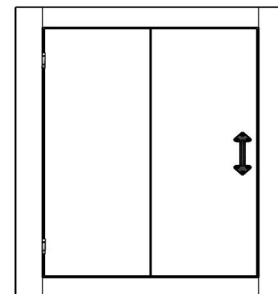
300 Door Wall Unit L/R
H- 780 W- 300 D- 350 (mm)
Painted Pine: £150 Pine: £130



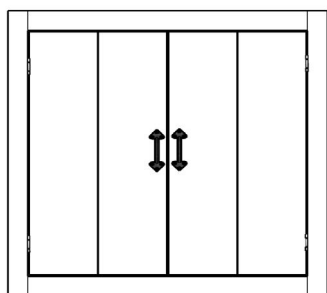
400 Door Wall Unit L/R
H- 780 W- 400 D- 350 (mm)
Painted Pine: £170 Pine: £320



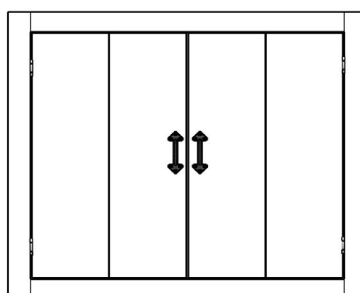
500 Door Wall Unit L/R
H- 780 W- 500 D- 350 (mm)
Painted Pine: £190 Pine: £160



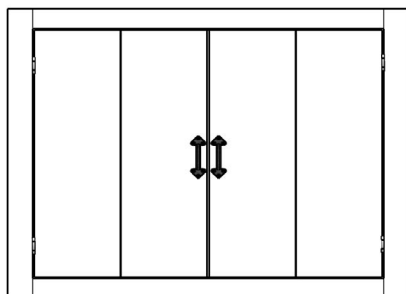
600 Door Wall Unit L/R
H- 780 W- 600 D- 350 (mm)
Painted Pine: £210 Pine: £180



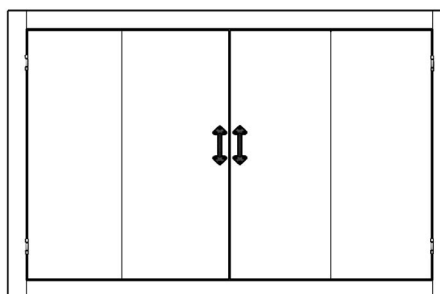
800 Door Wall Unit
H- 780 W- 800 D- 350 (mm)
Painted Pine: £290 Pine: £250



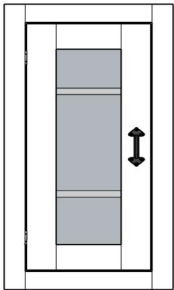
900 Door Wall Unit
H- 780 W- 900 D- 350 (mm)
Painted Pine: £320 Pine: £280



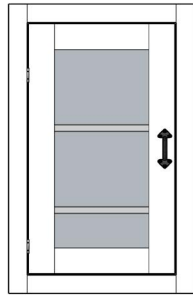
1000 Door Wall Unit
H- 780 W- 1000 D- 350 (mm)
Painted Pine: £350 Pine: £300



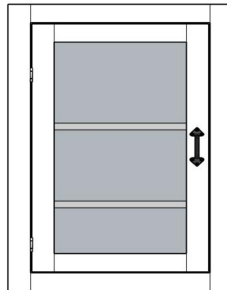
1200 Door Wall Unit
H- 780 W- 1200 D- 350 (mm)
Painted Pine: £390 Pine: £340



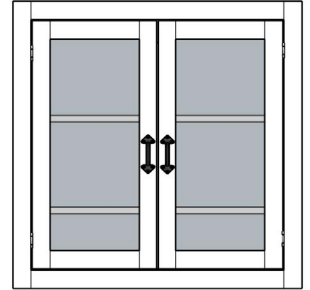
400 Glazed Door Unit L/R
 H- 780 W- 400 D- 350 (mm)
 Painted Pine: £200 Pine: £180



500 Glazed Door Unit L/R
 H- 780 W- 500 D- 350 (mm)
 Painted Pine: £210 Pine: £190

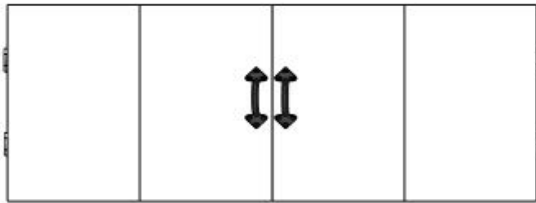


600 Glazed Door Unit L/R
 H- 780 W- 600 D- 350 (mm)
 Painted Pine: £230 Pine: £200

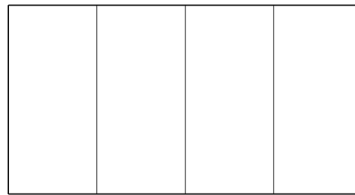


800 Glazed Door Unit
 H- 780 W- 800 D- 350 (mm)
 Painted Pine: £360 Pine: £310

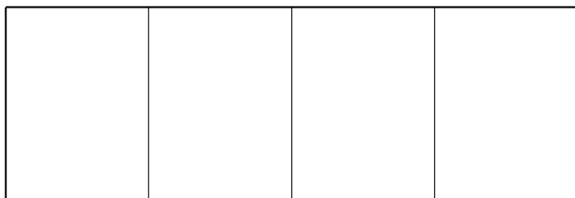
TOP BOXES



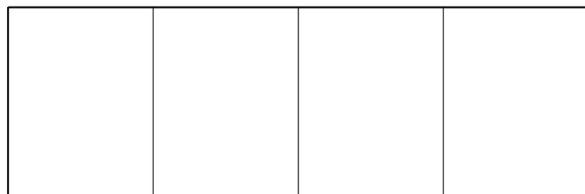
American Fridge Bridge
 H- 340 W- 920 D- 520 (mm)
 Painted Pine: £240 Pine: £210



700 Extractor Hood Cover
 H- 400 W- 700 D- 400 (mm)
 Painted Pine: £130 Pine: £110



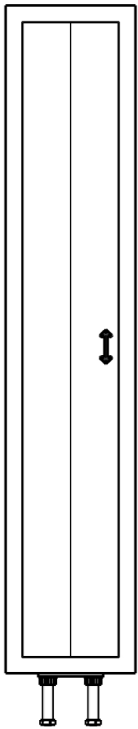
1100 Extractor Hood Cover
 H- 400 W- 1100 D- 400 (mm)
 Painted Pine: £150 Pine: £130



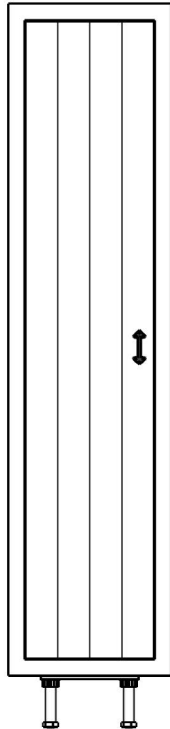
1200 Extractor Hood Cover
 H- 400 W- 1200 D- 400 (mm)
 Painted Pine: £180 Pine: £150

The Driftwood Collection

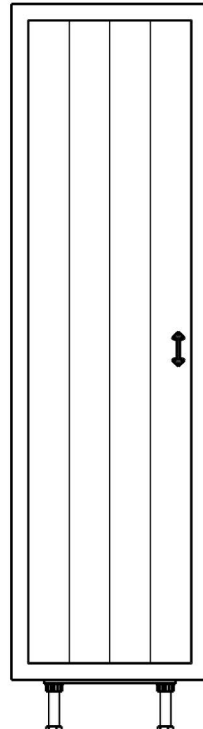
FULL HEIGHT CABINETS



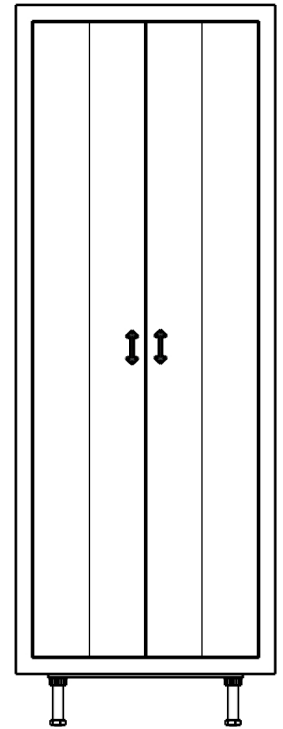
**400 Housekeepig CupboardL/R
& 5 Shelves**
H- 2140 W- 400 D- 600 (mm)
Painted Pine: £640 Pine: £550



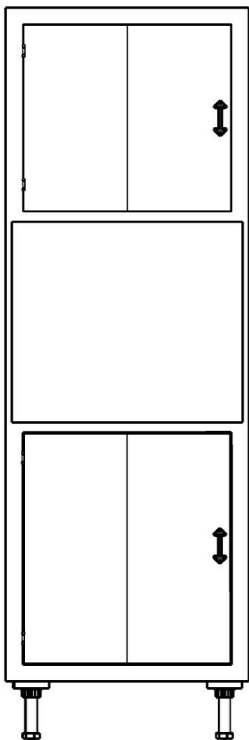
**500 Housekeepig CupboardL/R
& 5 Shelves**
H- 2140 W- 500 D- 600 (mm)
Painted Pine: £660 Pine: £570



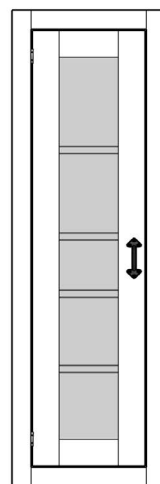
**600 Housekeepig CupboardL/R
& 5 Shelves**
H- 2140 W- 600 D- 600 (mm)
Painted Pine: £690 Pine: £600



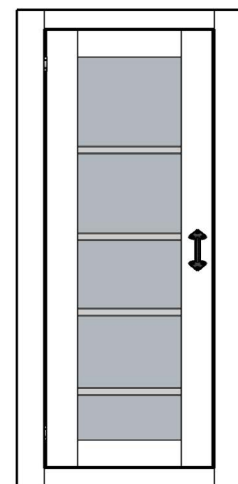
**800 Housekeepig Cupboard
& 5 Shelves**
H- 2140 W- 800 D- 600 (mm)
Painted Pine: £710 Pine: £620



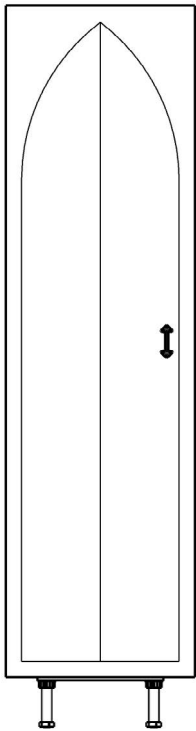
Oven & Microwave Tower UnitL/R
H- 2140 W- 600 D- 600 (mm)
Painted Pine: £710 Pine: £630



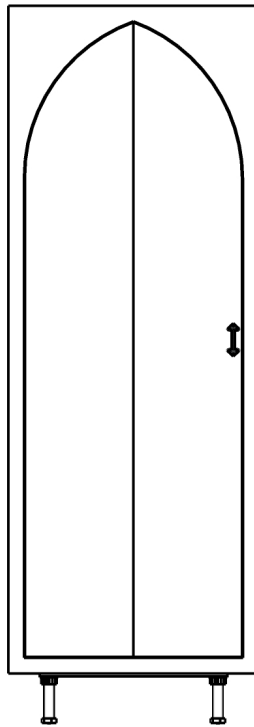
400 Glazed Worktop UnitL/R
H- 1240 W- 400 D- 350 (mm)
Painted Pine: £310 Pine: £270



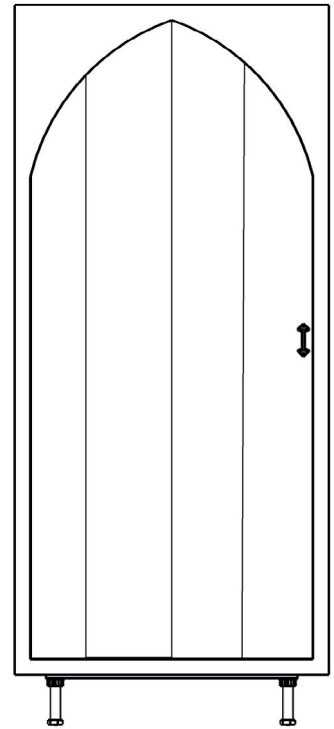
500 Glazed Worktop UnitL/R
H- 1240 W- 500 D- 350 (mm)
Painted Pine: £340 Pine: £300



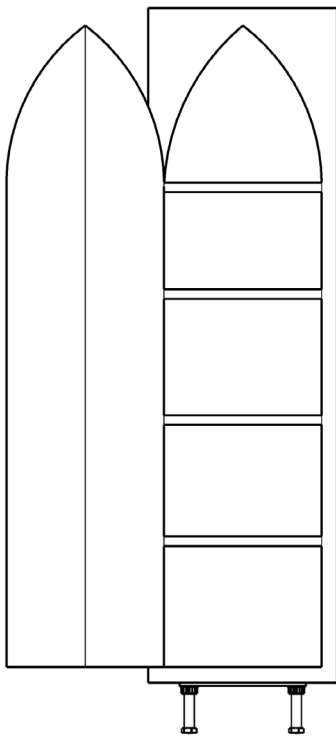
600 Arched Larder Cupboard L/R
 H- 2140 W- 600 D- 600 (mm)
Painted Pine: £710 Pine: £620



800 Arched Larder Cupboard L/R
 H- 2140 W- 800 D- 600 (mm)
Painted Pine: £740 Pine: £640



1000 Arched Larder Cupboard L/R
 H- 2140 W- 1000 D- 600 (mm)
Painted Pine: £760 Pine: £660



Inside Larder Unit

Driftwood Accessories:

Floor Height Plain End Pannel

H-860 W-18 D-600mm

Oak £90 Painted £60 Pine £50

Full Height Plain End Panel

H-2140 W-18 D-600mm

Oak £280 Painted £190 Pine £130

Cornice - Price per meter

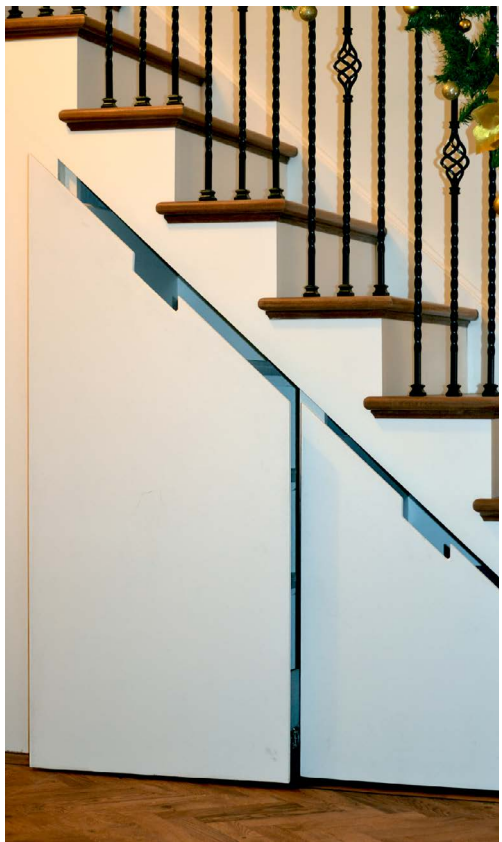
Oak £50 Painted £25 Pine £20

Plinth - Price per meter

Oak £40 Painted £30 Pine £20

Pelmet - Price per meter

Oak £50 Painted £25 Pine £20



BESPOKE CABINETS

We have tried to include as many 'standard' units in our kitchen ranges as we can but sometimes, there might be something special you'd like creating for you. Maybe that bespoke kitchen Island you've imagined? Or how about a special seating area to fill that awkward space?

If you can imagine it our design team can make it happen. During the initial consultations please feel free to discuss any ideas you have with your designer. They will use their knowledge and experience to make your dreams come true and you'll end up with a truly individual and unique kitchen to last a lifetime.

All our kitchen styles can be bespoke designed. If you've got something in mind that doesn't conform to our existing ranges or styles, please feel free to discuss it with your designer and they will enquire with our supplier to see if we can build it for you.

You can learn more about our kitchens and see previous projects at VictorianaSouthsea.co.uk/madetomeasure or call us on 02392 812835 to discuss your requirements.

Fitted Furniture At Victoriana we have completed a variety of custom-build projects. Whether it's a fully bespoke kitchen, a set of fitted bookcases for the study or office, or a set of fitted wardrobes for the bedroom, we can help design and build solid wood, quality fitted furniture at competitive prices.

Bespoke Furniture It's not all about the big projects, sometimes it's the small things that matter. Whether it's a small side table to fit an awkward space or a bespoke entertainment unit to house all your gadgets and music systems we can build pretty much anything you can dream of. Contact us and one of our friendly team will be happy to go through your requirements.

Other Furniture Although we've expanded into the bespoke market our roots are founded in quality, solid wood furniture. If you're looking for a dining table to go with your new kitchen or a desk for your new fitted out office, or a sofa or chair to compliment your living room, we have one of the largest choices in the UK for you to choose from.

We deal in a huge range of quirky and unique products that will add that wow factor to any interior. We also stock a large range of home accessories including a selection of mirrors to compliment any décor, clocks and wall art for those large blank walls or smaller one-off items to make your room stand out from the rest.

Visit our showrooms in Southsea to see a selection of what we have to offer, and our friendly sales team will be happy to help with anything you need. If you can't make it down to us, don't forget you can visit us online at www.victorianasouthsea.co.uk to keep up to date with our products.
