

Caution: Please read the entire manual before proceeding
View warranty and disclaimer on page 12

Getting Started

Before we start lets make sure we have the correct mount and all the required tools and hardware to complete the installation.

- ✓ The TV is a Flat Panel TV is between 37" - 90" and weighs no more than 155lbs.
- ✓ The wall the TV will be mounted on is either concrete or dry wall with wood studs.
- ✓ You have all of the following tools:



If you answer "Yes" to all the questions above then you are ready to begin the TV Mount installation!

2

Step 2: Install Wall Plate on Drywall with Wood Stud

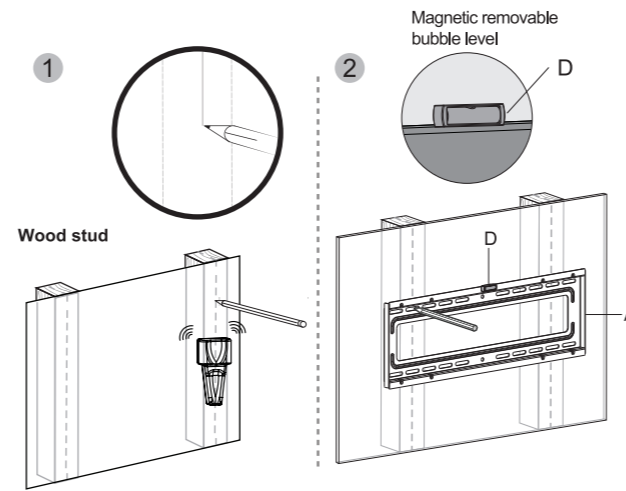
Note: For Concrete skip to Step 3

- Use the stud finder to locate 2 studs. Then draw a vertical line marking the center of the stud.
- Level the wall plate and align it with the center of the studs. Make 4 Pencil marks to indicate where to drill.

Tools Required:



5



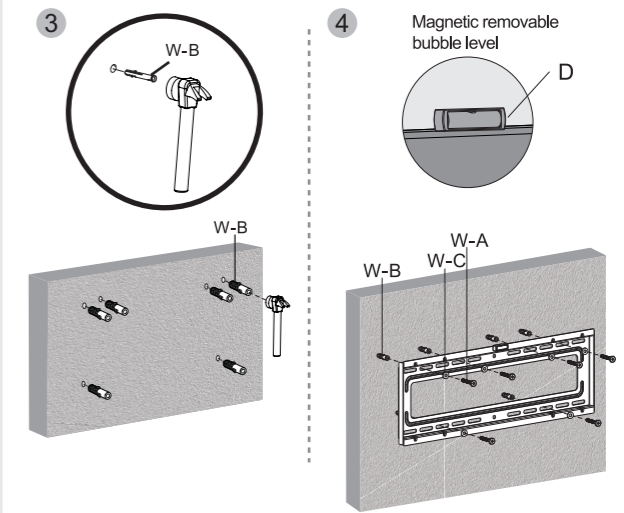
Caution: The minimum size of the woodstud must be 2"x 4" and the thickness of the drywall must not exceed 5/8".

- Insert the anchors into the 6 pilot holes. Tap with a hammer.
- Align wall plate with pilot holes and anchors. Insert 6 bolts through washers and anchors then tighten with wrench.

Tools Required:



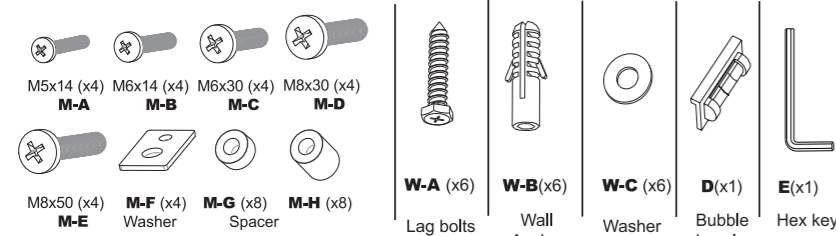
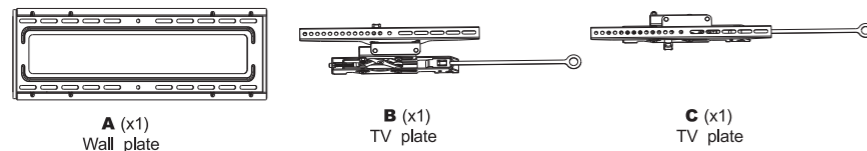
8



Caution: This product contains small items that could be a choking hazard if swallowed.

Parts & Hardware

Caution: Before starting assembly, verify all parts are included and undamaged. If any parts are missing or damaged, do not return the damaged item to your dealer; contact Customer Service. Never use damaged parts or previously used parts!



3 For attaching TV to Mount

For attaching Mount to wall

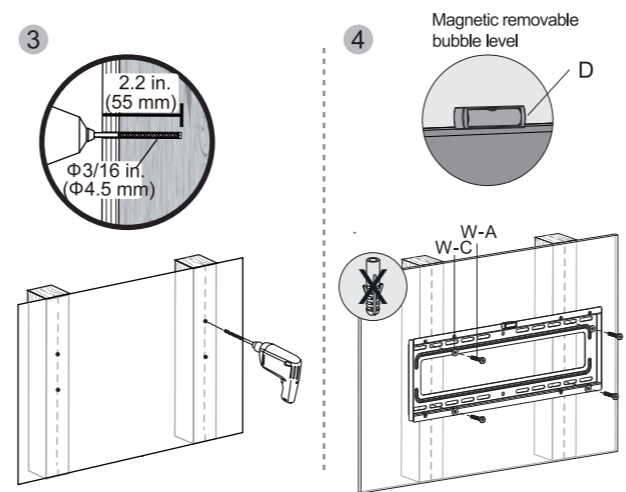
- Remove the Wall plate and drill the pilot holes with a 3/16" drill bit.
- Align the wall plate with the pilot holes and insert 4 bolts through the washer in the pilot holes and tighten.

Note: Make sure the washers (W-C) is placed above the wall plate.

Tools Required:



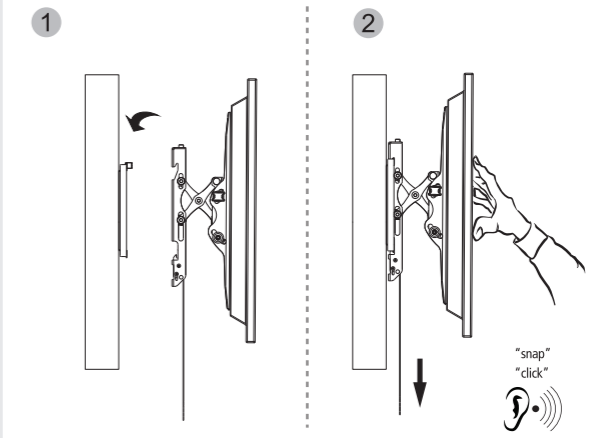
6



Step 4: Hang Your TV

- Lift the TV and secure it with the hook on the top bracket. Always have two people lift TV.
- After the TV is hanging properly on the wall mount, press on the bottom edge of the TV towards the wall to lock it in place. Use the finger to hold on the TV, press in the plate (B, C).

Warning: Always have two people lift TV.



▲ Listen for a "Click" to ensure mount is locked in place

9

Step 1: Attach TV to Mounting Plate

- Check what screw size will fit in your TV (M-A, M-B, M-C, M-D, M-E). Note: you may need to use longer screws with Washer (M-F).

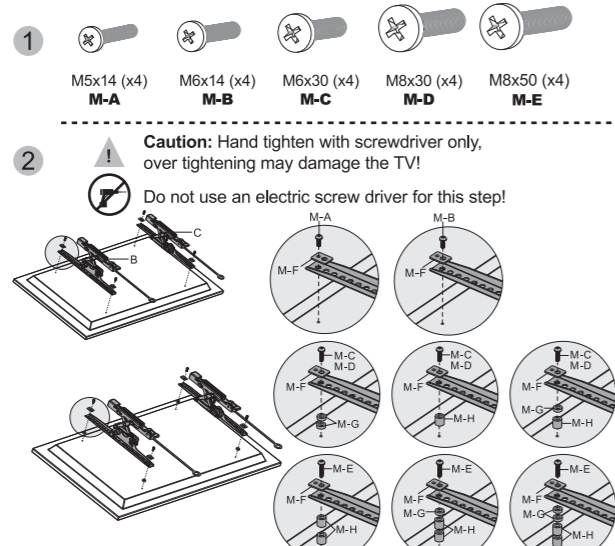
- Attach the VESA plate prepared onto the back of TV using the appropriate hardware and tighten.

Note: If the back of your TV is curved, use the appropriate combination of spacer (M-G/M-H) to level the mounting brackets.

Tool Required:



4



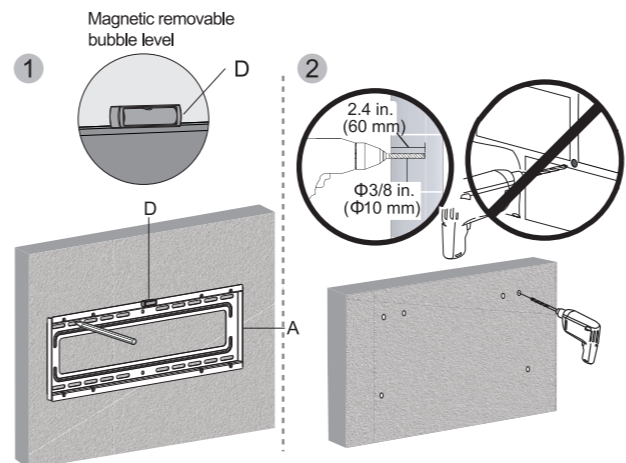
Step 3: Install Wall Plate on Concrete

- Level the wall plate and make 6 marks with pencil to show where to drill the pilot holes.
- Remove the Wall plate and drill the pilot holes with a 3/8" drill.

Tools Required:



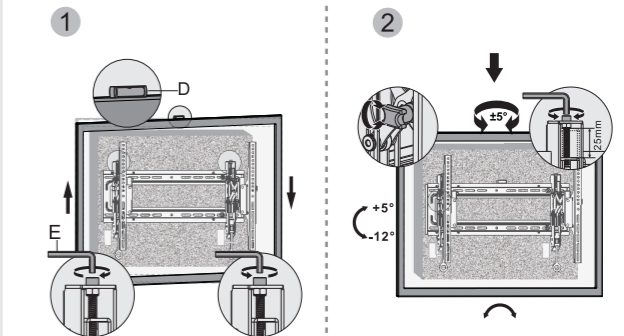
7



Caution: The minimum depth of the concrete must be 8". Do not drill pilot holes into the mortar between the concrete.

Step 5: Tension Adjustment

- Level TV and use Hex key (E) to adjust tension screw for appropriate tension for tilting TV.
- Tilt TV and use Hex key (E) to adjust tension screw for appropriate tension for tilting TV.



10