



Chasing Shadow by Kari Kristensen

Wolf Gordon 

# Curated Collection

MEDIA CONTACT:

[wolfgordon@fogandapple.com](mailto:wolfgordon@fogandapple.com) | +1 (212) 897 4015

**FOG & APPLE**

# Curated Collection

Wolf-Gordon expands their Curated Collection of digitally printed artwork with the addition of 13 new creations from six artists. The Curated Collection allows interior designers to incorporate distinctive imagery from a select group of artists, with the added flexibility of various modification options including size, scale, coloring, and even printing substrate. The addition of these patterns rounds out the collection in an eclectic way, with inspiration ranging from anime and street art to a bold, architectural abstract of a rural mountainscape.



# ASVP: The Artist

Started in 2009, ASVP is a Brooklyn-based artistic collaboration between Simon Grendene and Victor Anselmi that has become internationally known for creating graphic images with nods to advertising, pop and comic book culture often including layers of organic abstraction. The team's process often includes a combination of painting and printmaking.

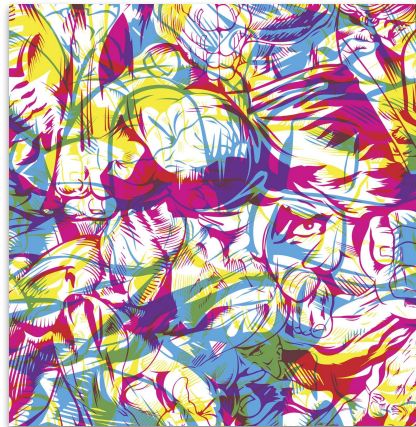


[Download Visuals](#)



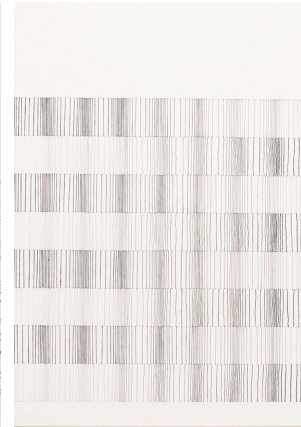
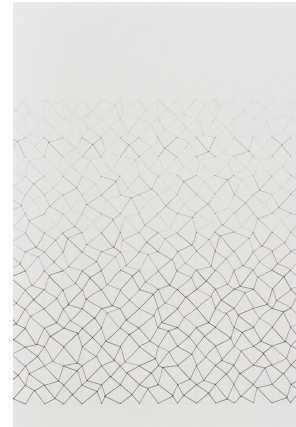
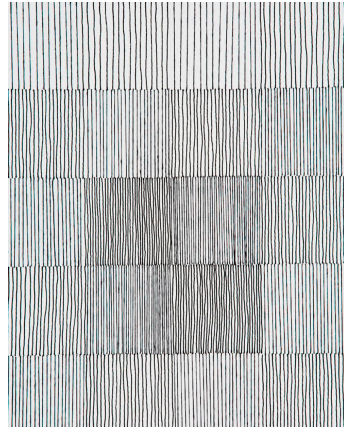
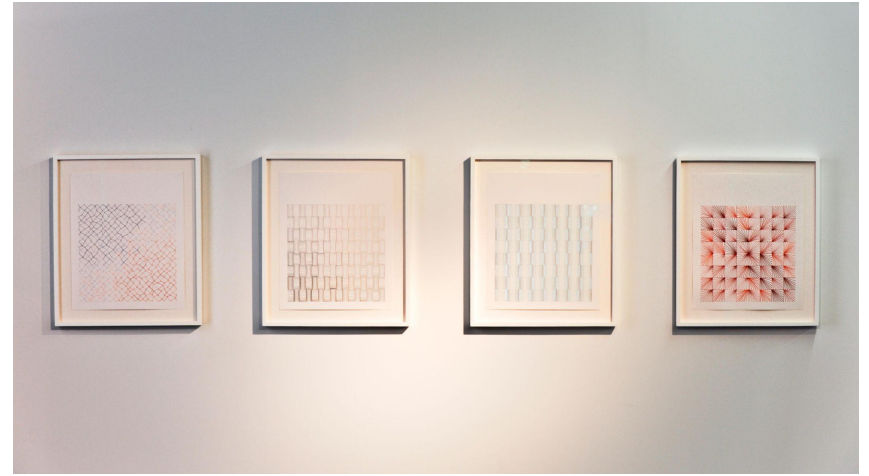
## ASVP: The Design

**Super Matter 24** and **Super Matter 6** are based on a series of studio works by **ASVP** entitled, SUPER MATTER. The Brooklyn-based duo describe the visual language as Pop Abstract Expressionism or 'PopAbEx'. The imagery reflects familiar elements of superheroes and pop iconography reimagined by the artists as shapes of expressive energy with dynamic strokes, bold color and movement.

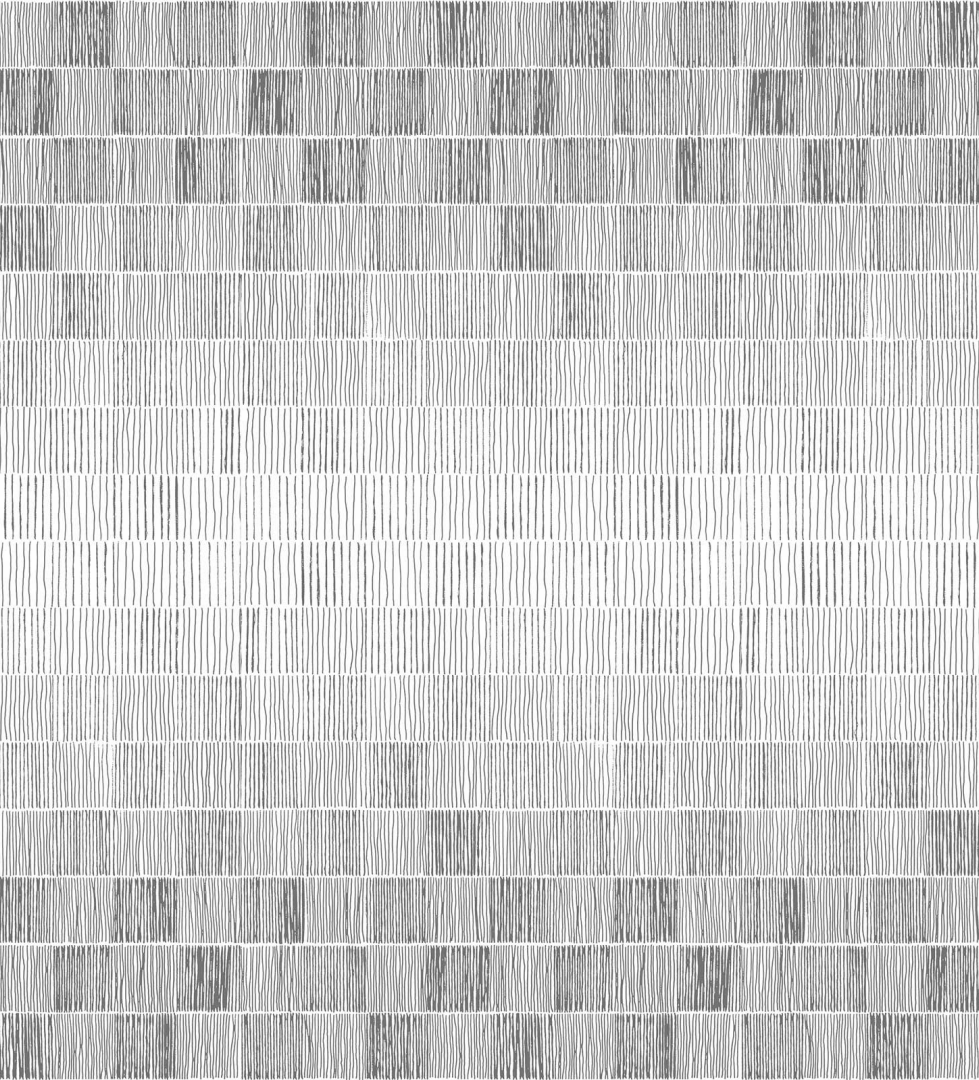


# Audrey Stone: The Artist

Audrey Stone has worked in a variety of mediums, and is currently focused on working with acrylics and sculptures in various forms, maintaining a signature minimalist aesthetic.

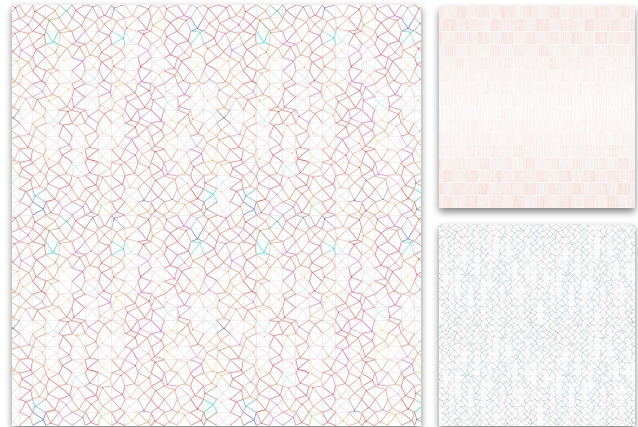


[Download Visuals](#)



## Audrey Stone: The Design

Audrey Stone's **Bottom Dense Line** and **Vertical Climb** patterns are inspired by a previous five-year long series, in which the artist combined sewing and drawing with various inks, threads, and graphics to explore different mediums. Bottom Dense Line and Vertical Climb explore the idea of play through the exploration of lines with direction and weight.



# Ghislaine Viñas: The Artist

Born in the Netherlands and raised in South Africa, Viñas leads her internationally renowned design firm with a visionary approach, in which she is constantly collecting inspiration from the everyday and everywhere. The firm is known for their unique vision and “out of the box” thinking and are adept at providing strong creative direction for both existing brands and new ventures beyond interiors.



[Download Visuals](#)



## Ghislaine Viñas: The Design

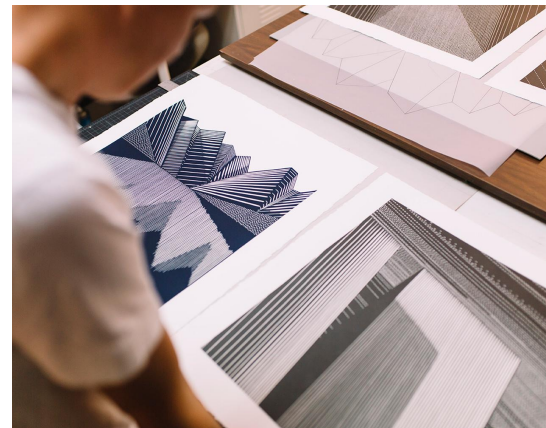
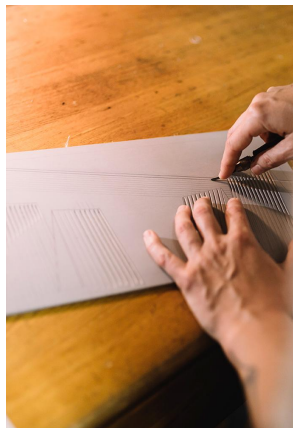
**Blooma** is a playfully bold take on vintage Swedish florals inspired by native flowers and traditional Scandinavian shapes, which were then simplified to create a more modern, buoyant blossom motif.



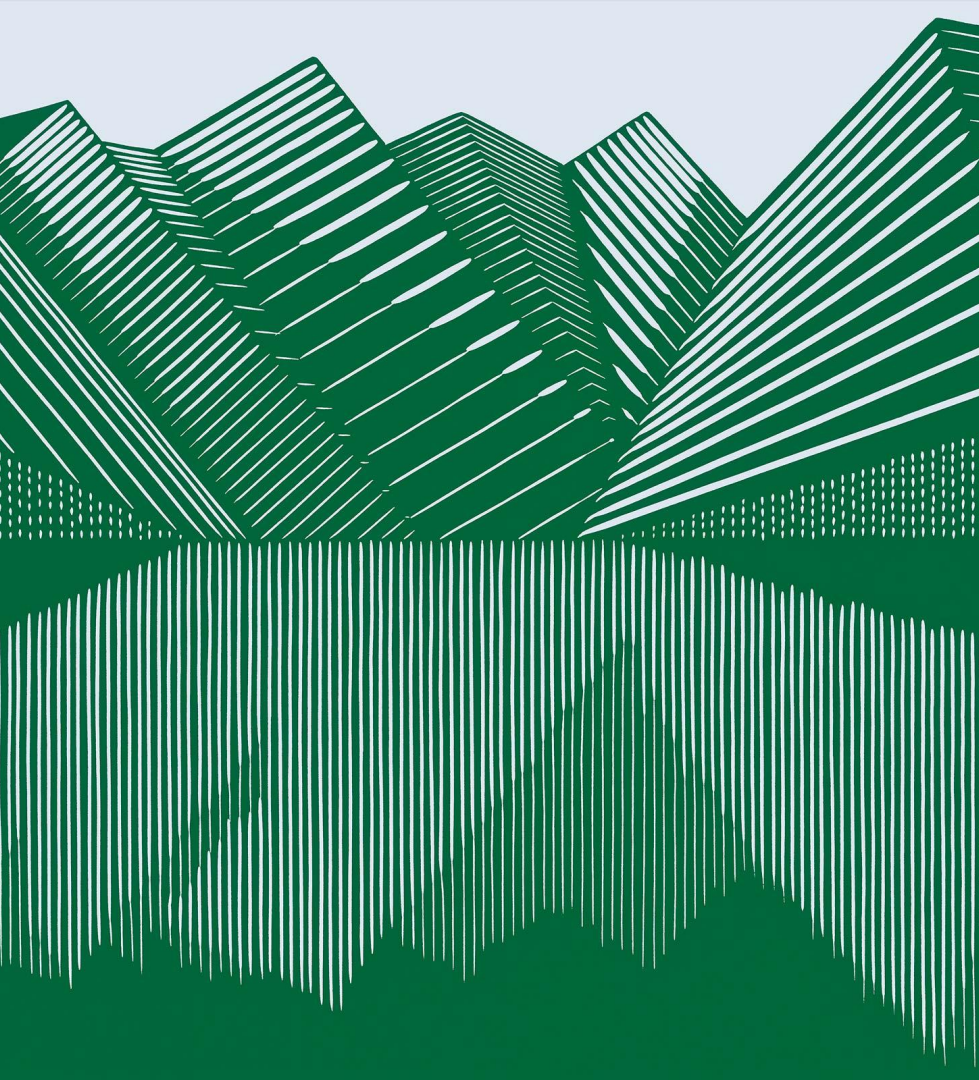


# Kari Kristensen: The Artist

Kari Kristensen is a contemporary Canadian printmaker and muralist, who resides in Vancouver via the small Ontario town where she was born. Kristensen's current work is focused on redefining linoleum printmaking, a laborious process which involves drawing, carving and inking a linoleum matrix to achieve a final print.

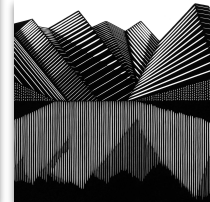
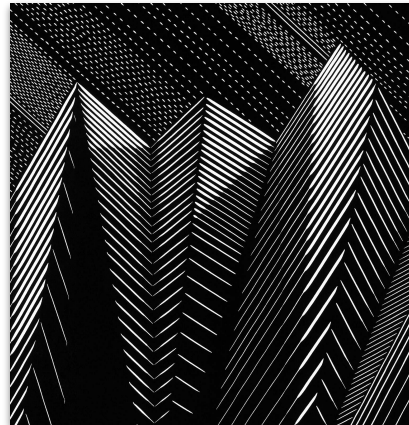


[Download Visuals](#)



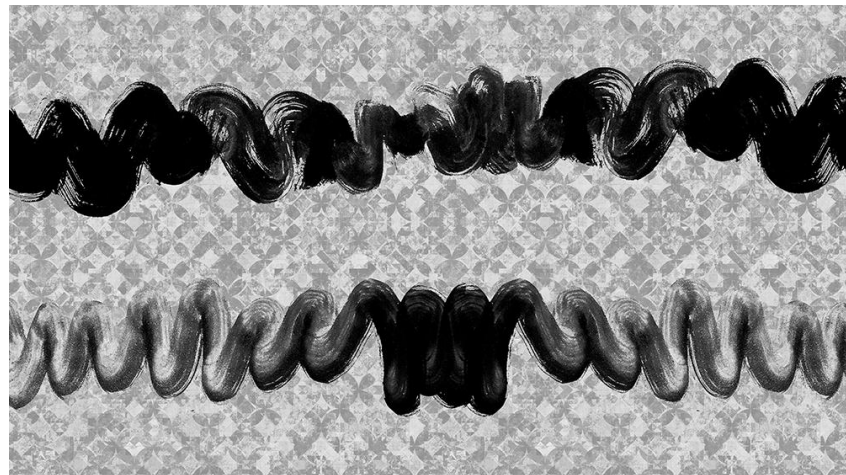
## Kari Kristensen: The Design

**Moraine Lake** is an homage to the glacially fed lake in Alberta, Canada, which was a special place for Kristensen's grandmother. The second design, **Chasing Shadow** was born out of the idea that the mountains are like origami, once all folded together and now separated. The specificity of low northern light reflecting in the planes of the mountain surface indicate a particular location, but the feeling is of a memory familiar to anyone.

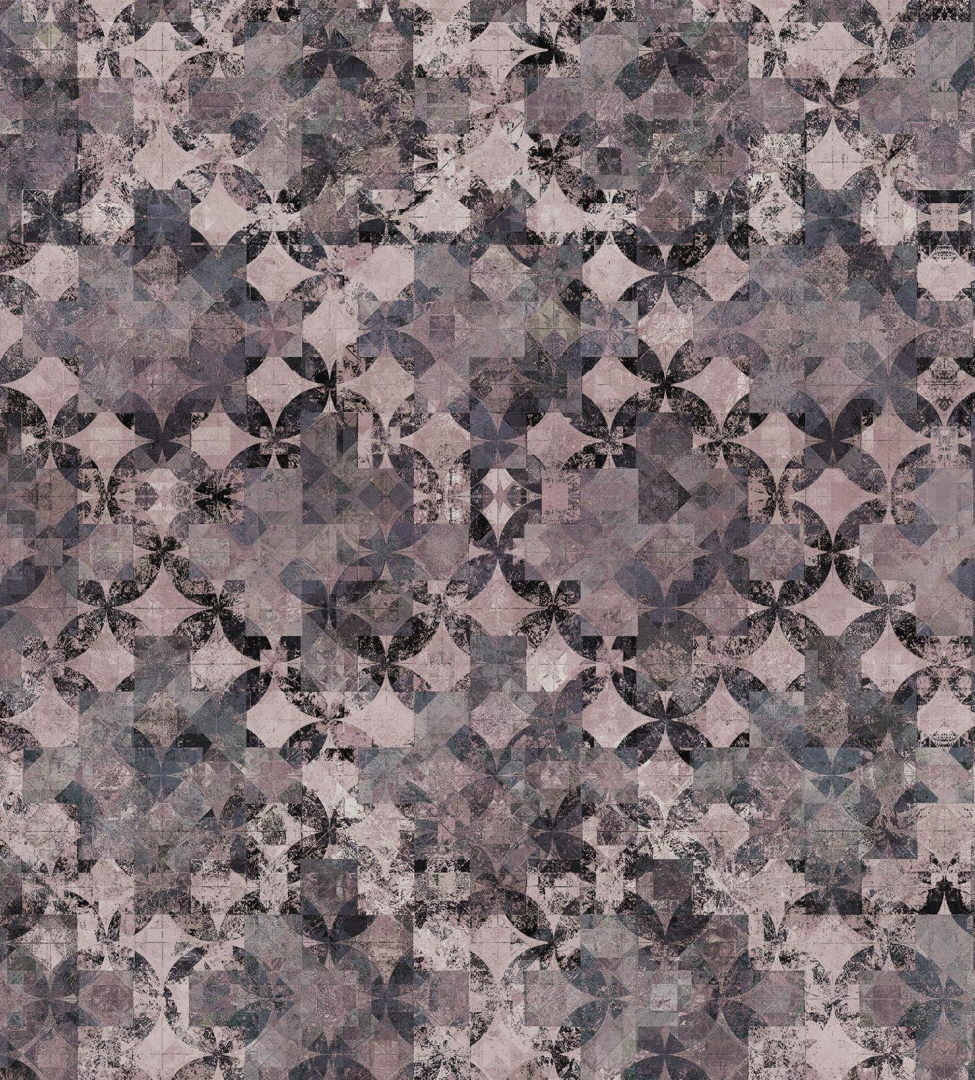


# Ryan Bradley: The Artist

Ryan Bradley's work strives to play against the basal instincts, deconstructing the figure or pattern and the boundary between the recognizable and abstract. Enamored with the additive/subtractive design process, Bradley holds that what is unsaid or absent is perhaps more important than what is readily available. His focus is not about the subject or focal point, but rather about the Void.

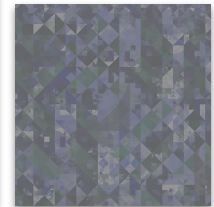
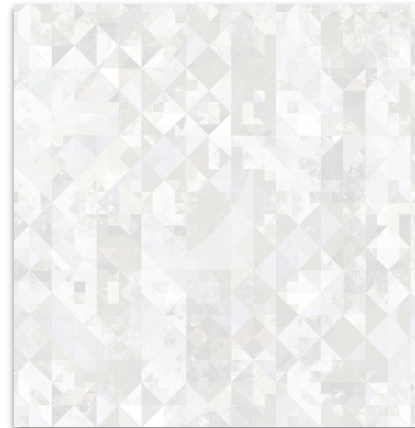


[Download Visuals](#)



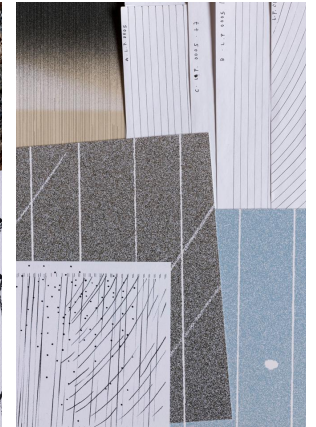
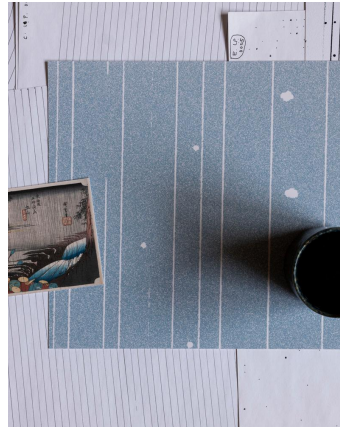
## Ryan Bradley: The Design

Within a series, patterns are collaged together, creating unique assemblages where the architecture of each system is abstracted through the interlacing and weaving of subtracted elements. Patterns can freely move and have both dispersions and swarms. **"Builds"** focuses specifically on the elements that form and tile together to build these undulating systems and **"Erasure"** is a combination of two related, but distinctly different, patterns and colorways where a portion of the prominent pattern is removed, unveiling the secondary pattern beneath.



# Studioestudio: The Artist

Studioestudio, led by Pablo Alabau and Laura Alandes, bases each project on finding a minimum gesture and maximum reduction of elements to clearly represent an idea or concept. The studio combines a rational approach and artistic vision through designs of simple lines, color and geometry, to create objects and images that evoke emotion.



[Download Visuals](#)

# Studioestudio: The Design

Studioestudio's **Spring**, **Summer**, **Autumn**, and **Winter** designs are inspired by the representation of sun, rain, wind, and snow in Japanese woodblock prints, with the idea to develop a system of patterns that could be combined to create multiple graphic compositions. Led by Pablo Alabau and Laura Alandes, Studioestudio combines a rational approach and artistic vision--through designs of simple lines, color and geometry--to create objects and images that evoke emotion.

