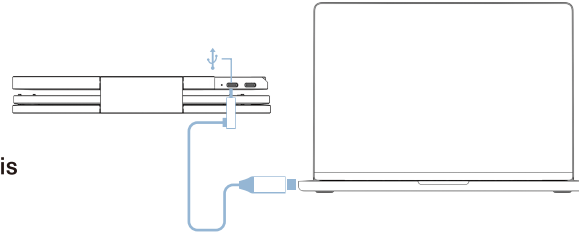


Connection Method

Single Connection Methods

Note

After the display driver is installed, at least 5V/3A of sustained power is required for the FLEX monitor to receive signal.

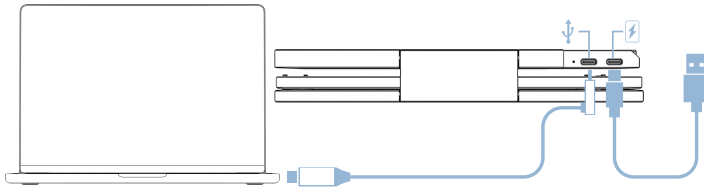


Single USB-C Cable Connection

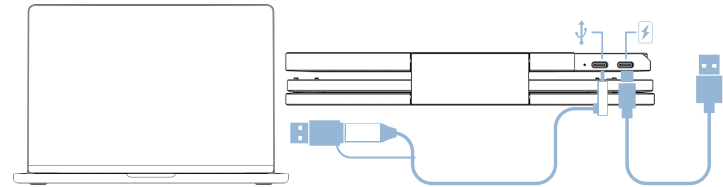
Cable Connection Methods if Additional Power is Required

Note

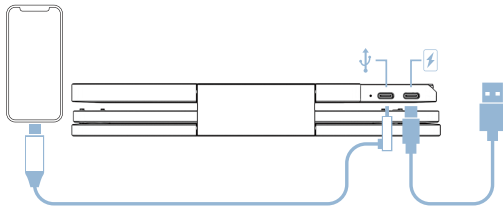
If your laptop or device does not support an output of 5V/3A, an external power is required.



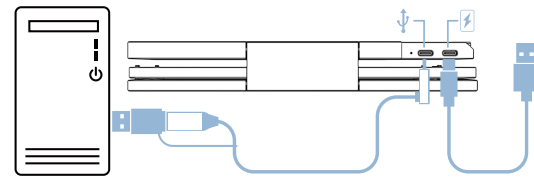
Laptop computer connection mode
(external power)



USB-C to USB-A Converter Head Connection
(external power)



Mobile phone connection mode
(external power)



Desktop computer connection mode
(external power)

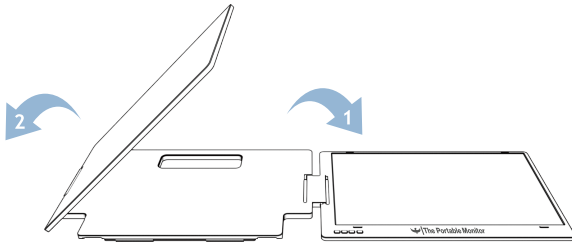
Set It Up

Note

The correct sequence should be performed to avoid any damage to the device.

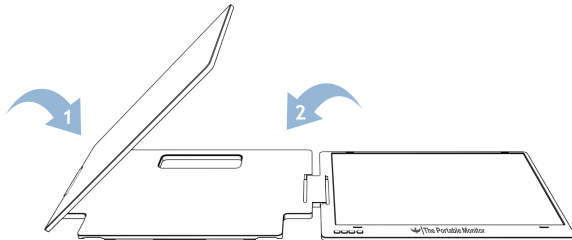
Unfolding Sequence

Please open the right display screen first and then open the left display screen.



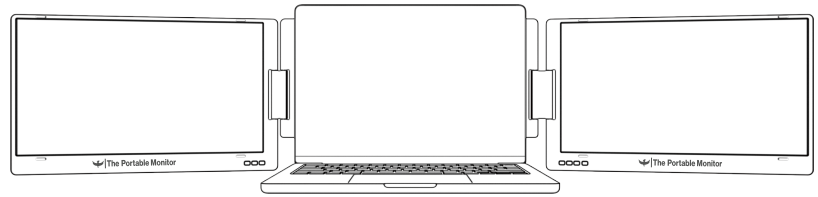
Storing Monitor

Please fold the left display screen first and then fold the right display screen.

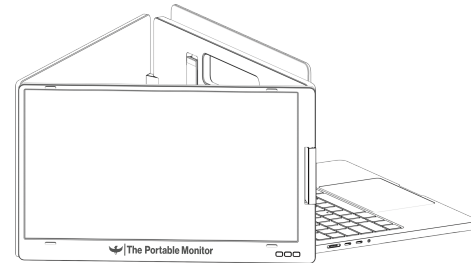


Adjustable Stand and Monitor

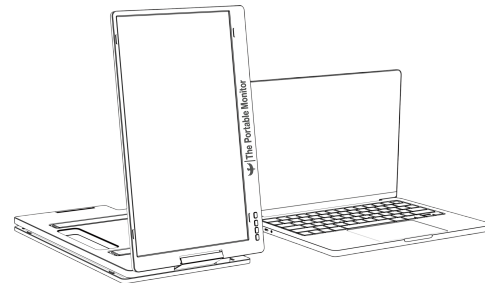
Adjust the stand angle according to your need.



Landscape Mode



Triangular Mode



Single Portrait Mode