

User Guide

FLEX

Dual Portable Monitor



The Portable Monitor

Content

1. Package List	1
2. Introduction	2
3. Set It Up	3
4. Driver Installation	5
5. Connection Method	14
6. Display Setting for Wins/macOS	15
7. OSD Function Introduction	21
8. Tech Specs	24
9. Use requirements & Cleaning & Maintenance	25
10. FAQ & Contact Us	26

1. Package List



14" Portable Dual Monitor



USB-C to USB-C / USB-A Cable



USB-C to USB-A Cable



USB Disk (with Display Driver)



User Manual

Note: Our package includes a USB-C to USB-A converter head.

2. Introduction



1 Type-C Full Function Port

- USB Type-C 3.1
- Transmit the audio and video signal
- Simultaneously support power delivery

2 Type-C Power Supply Port

- Only for power delivery

3 Indicator Light

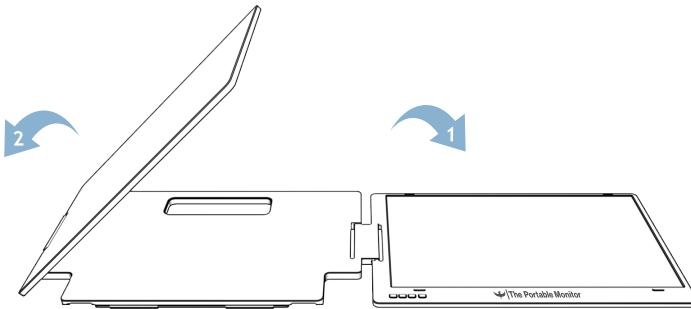
- Green: Power on and monitor connected successfully
- Red: Power off/ no signal

3. Set It Up

Note: The correct sequence should be performed to avoid any damage to the device.

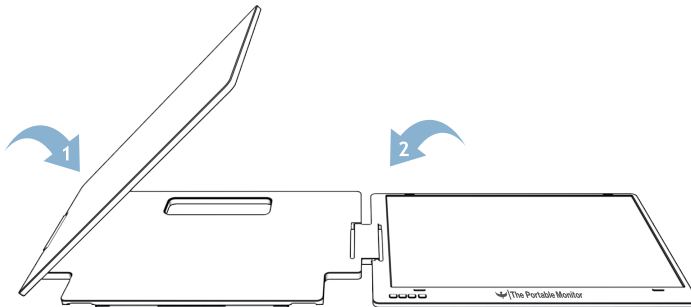
Unfolding Sequence

Please open the **right** display screen first and then open the left display screen.



Storing Monitor

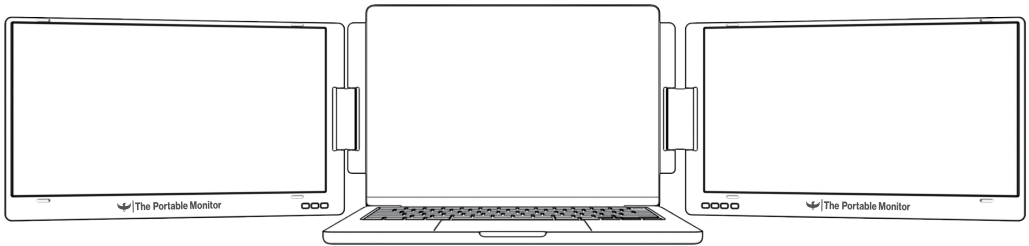
Please fold the **left** display screen first and then fold the right display screen.



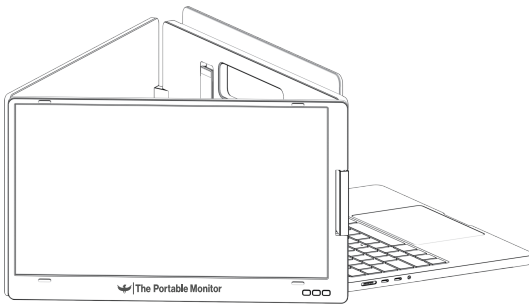
3. Set It Up

Adjustable Stand and Monitor

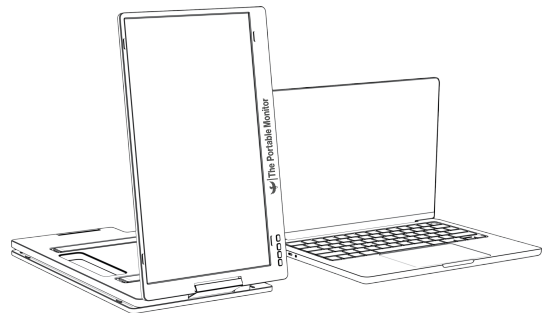
Adjust the stand angle according to your need.



Landscape Mode



Triangular Mode



Single Portrait Mode

4. Driver Installation

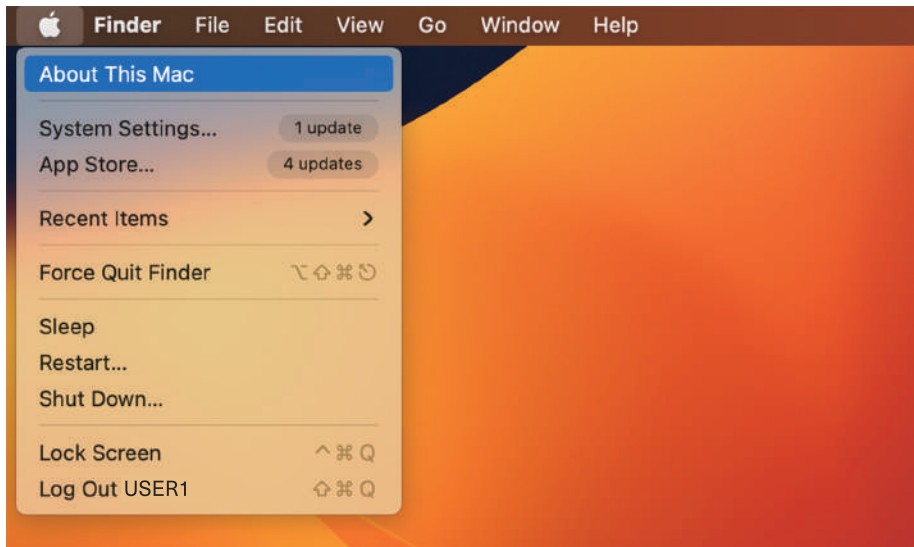
4.1 For macOS Laptop

Please download the driver of the macOS system in the USB disk
Or download the drive by:

<https://www.siliconmotion.com/downloads/index.html>

Connect macOS Laptop:

- 1 Click "About This Mac" on your Macbook.



4. Driver Installation

- 2 Click “Overview” to check your detailed macOS system info.

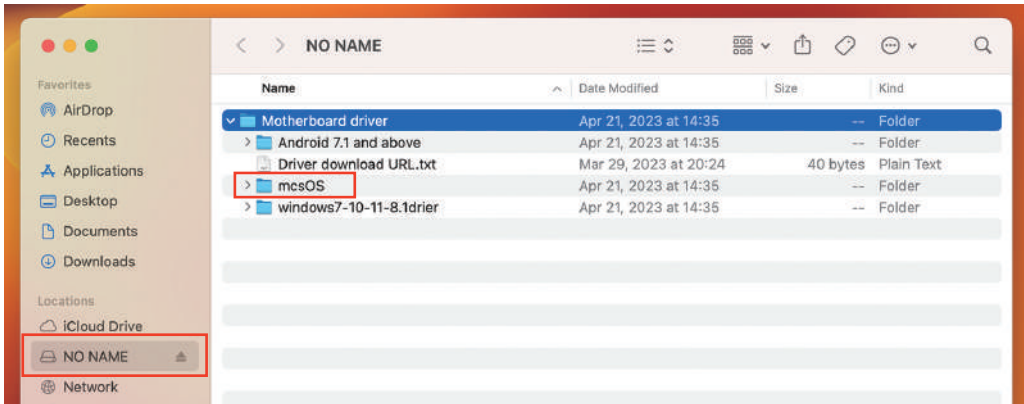


4. Driver Installation

- 3 Please insert the included USB Disk into your Macbook and download corresponding driver based on your macOS system.

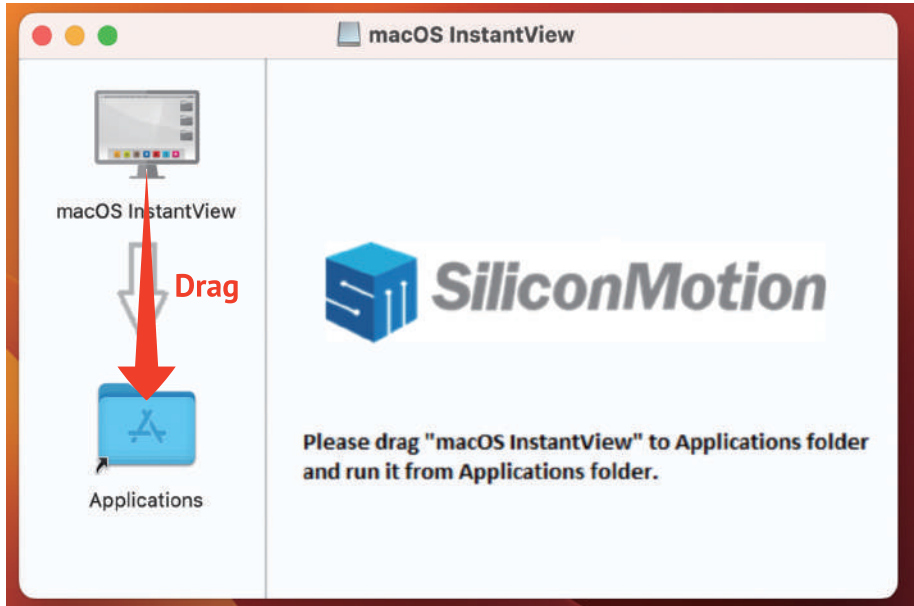
macOS

OS Description	Version	Release Date	Release Notes	Download
Recommended: InstantView display application with UI. Support macOS 13 Ventura, 12 Monterey, 11 Big Sur and 10.15 Catalina including MacBook Air/Pro (M1/M2 & Intel powered)	V3.14 RD4	Jan 3, 2023	Release Notes	Download
Legacy Display Driver for macOS 10.15 Catalina, 10.14 Mojave and 10.13 High Sierra	V2.2.16.0	Jun-3, 2021	Release Notes	Download
Legacy Display Driver for macOS 10.10, 10.11 and 10.12	V2.1.4.0201	Dec 12, 2019	Release Notes	Download

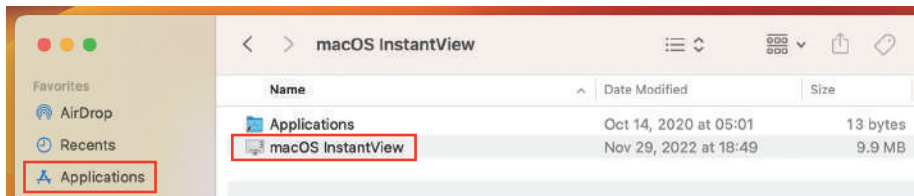


4. Driver Installation

- 4 Please drag “macOS InstantView” to “Applications” folder and run it.

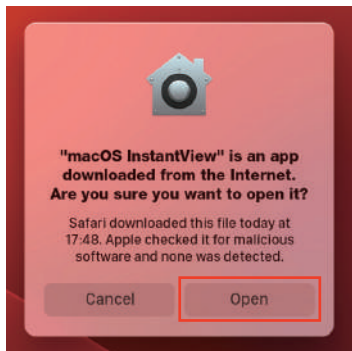


- 5 Click “macOS InstantView” in “Applications” to run the driver.

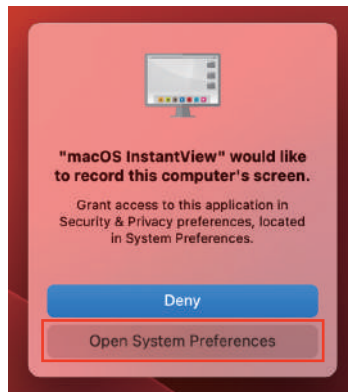


4. Driver Installation

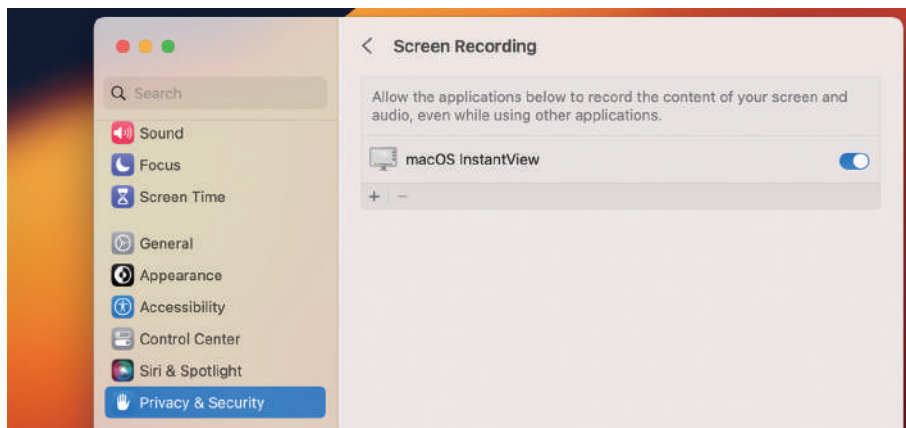
6 Please click "Open".



7 Please click "Open System Preferences".

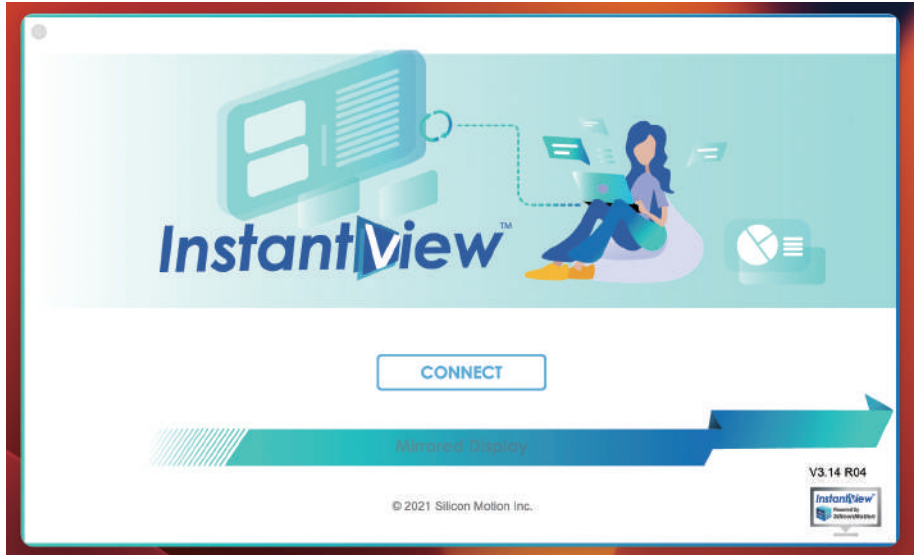


8 Choose "Security & Privacy", click "Screen Recording" and enable "macOS InstantView".

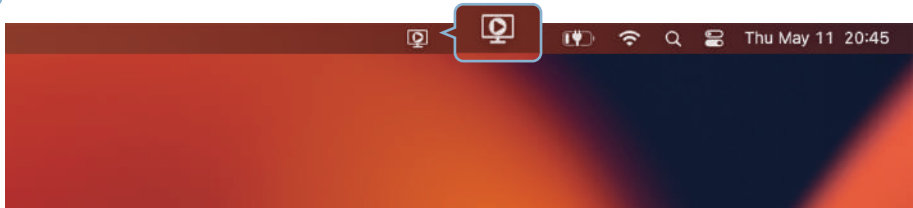


4. Driver Installation

- 9 Please click the “CONNECT”.



- 10 When connected successfully, a screen record icon shows up.



4. Driver Installation

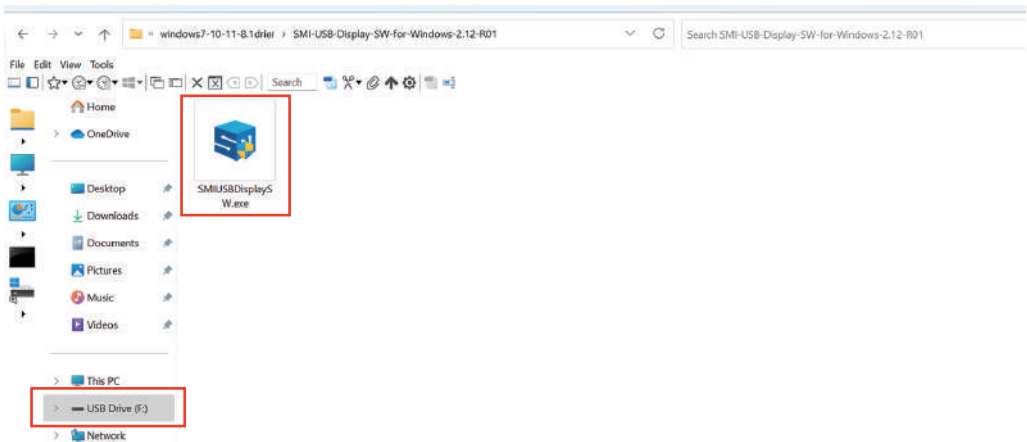
4.2 For Windows Laptop

Please download the driver of the Windows system in the USB disk.
Or download the drive by:

<https://www.siliconmotion.com/downloads/index.html>

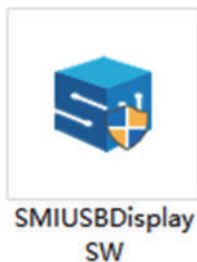
- 1 Please insert the included USB Disk into your Wins laptop and download Windows driver.

Windows				
OS Description	Version	Release Date	Release Notes	Download
Windows 11, Windows 10, Windows 7, Windows 8.1 Driver	V2.15 R03	May 9, 2023	Release Notes	Download

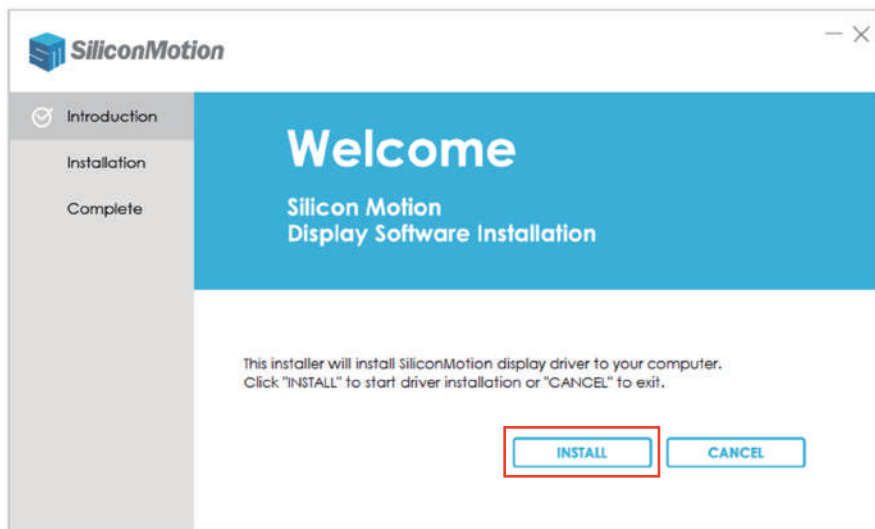


4. Driver Installation

2 Click:



3 Click the "INSTALL".



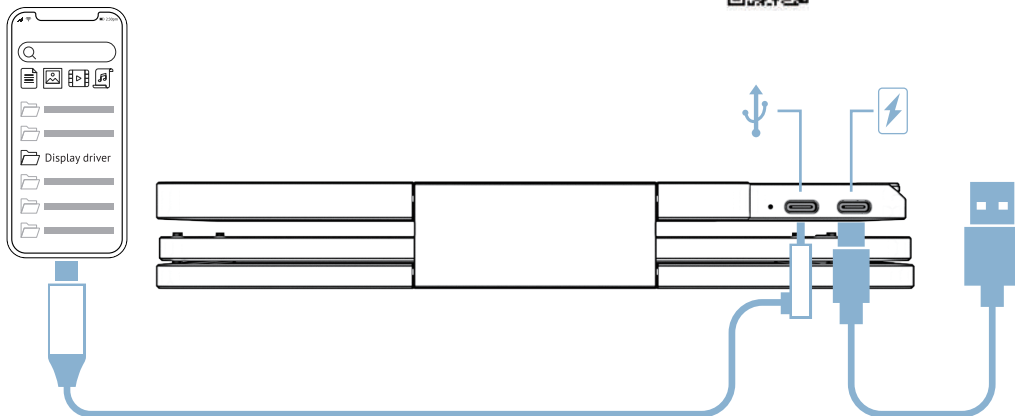
4. Driver Installation

4.3 For Android Phone

Please download the driver of the Android system in the USB disk.
Or download the drive by:

<https://www.siliconmotion.com/downloads/index.html>

Android				
OS Description	Version	Release Date	Release Notes	Download
Android 7.1 and above	V2.14.0.0	Jan 18, 2023	Release Notes	  Download

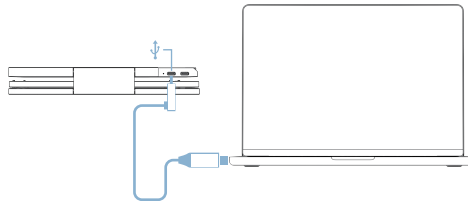


Note: Open the mobile phone file management app and install the device driver accordingly. Please note that not all mobile phones will support external display due to the function of phone port.

5. Connection Method

Single Connection Methods

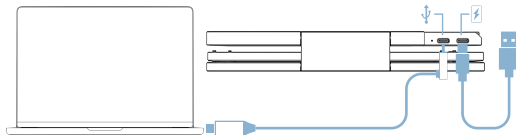
Note: After the display driver is installed, at least 5V/3A of sustained power is required for the FLEX monitor to receive signal.



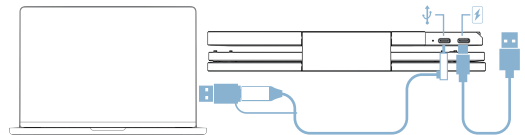
Single USB-C Cable Connection

Cable Connection Methods if Additional Power is Required

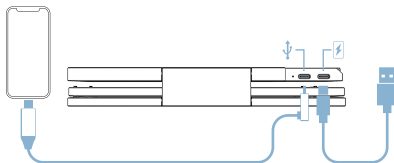
Note: If your laptop or device does not support an output of 5V/3A, an external power is required.



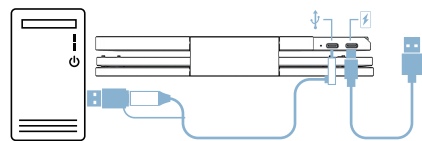
Laptop computer connection mode
(external power)



USB-C to USB-A Converter Head Connection
(external power)




Mobile phone connection mode
(external power)

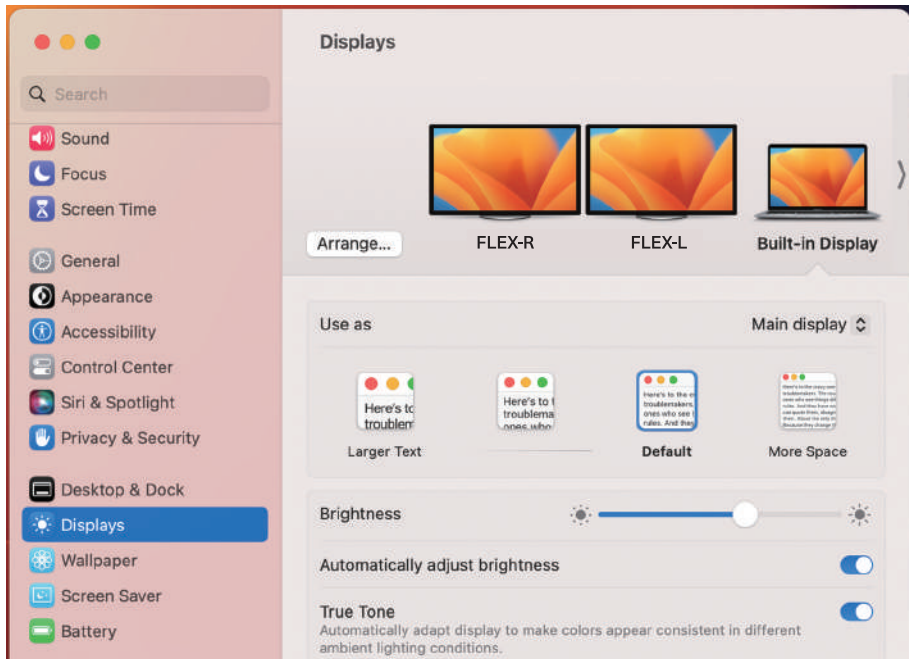


Desktop computer connection mode
(external power)

6. Display Setting for Wins/macOS

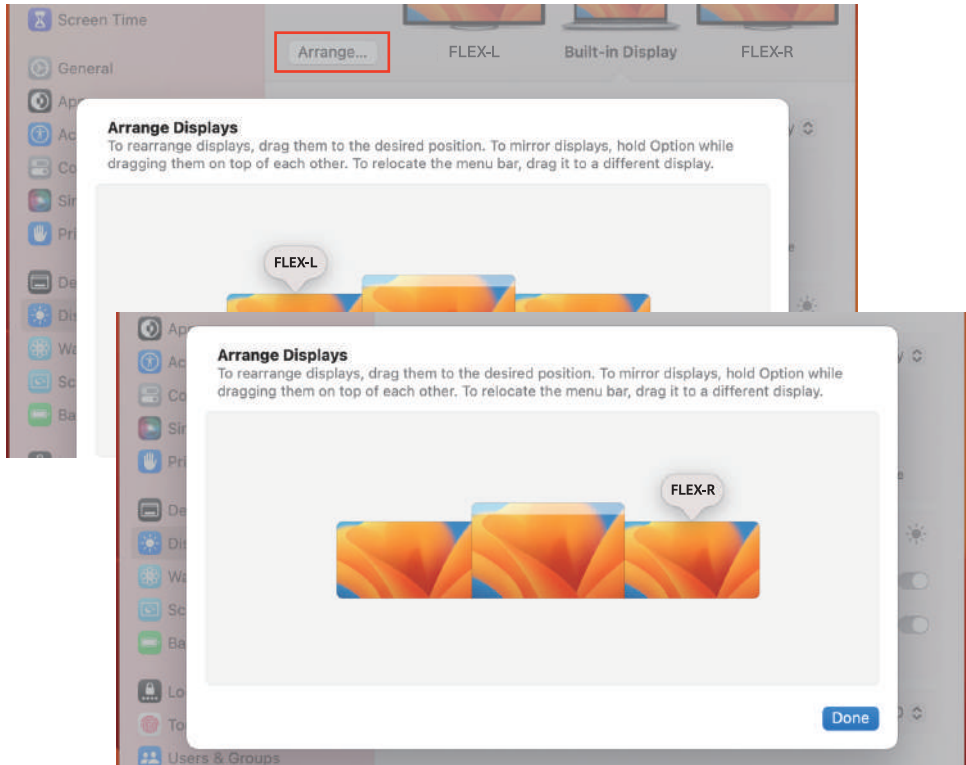
6.1 macOS Display Settings and Configuration

- 1 Click the System Settings icon  in the Dock or choose Apple menu > System Settings.
- 2 Click "Display" and "Arrangement". Then long drag the Screen to rearrange the screen location based on your preference.



6. Display Setting for Wins/macOS

- 2 Click "Display" and "Arrangement". Then long drag the Screen to rearrange the screen location based on your preference.

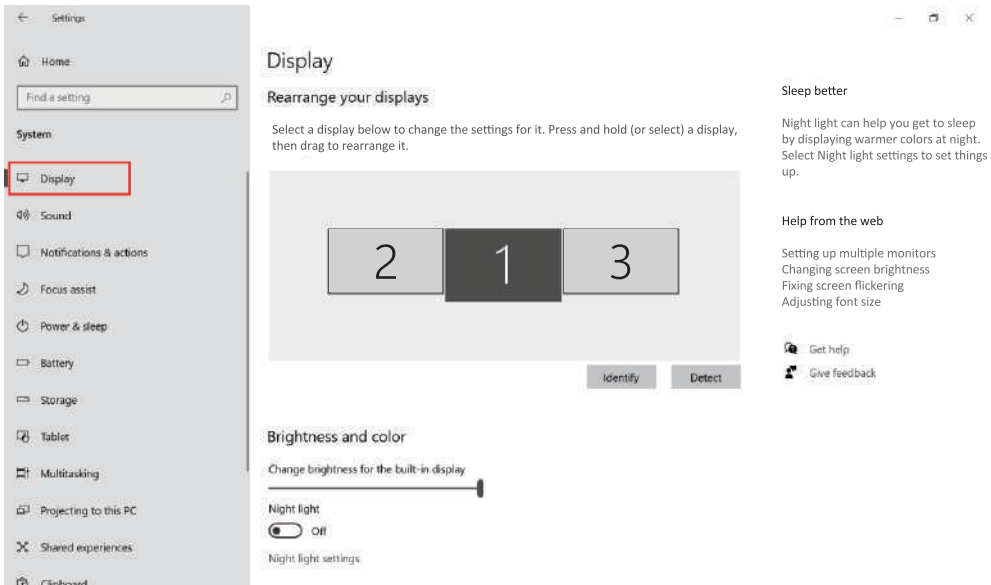


- 3 Choose the display mode you prefer [Main display/Extended display/Mirror]

6. Display Setting for Wins/macOS

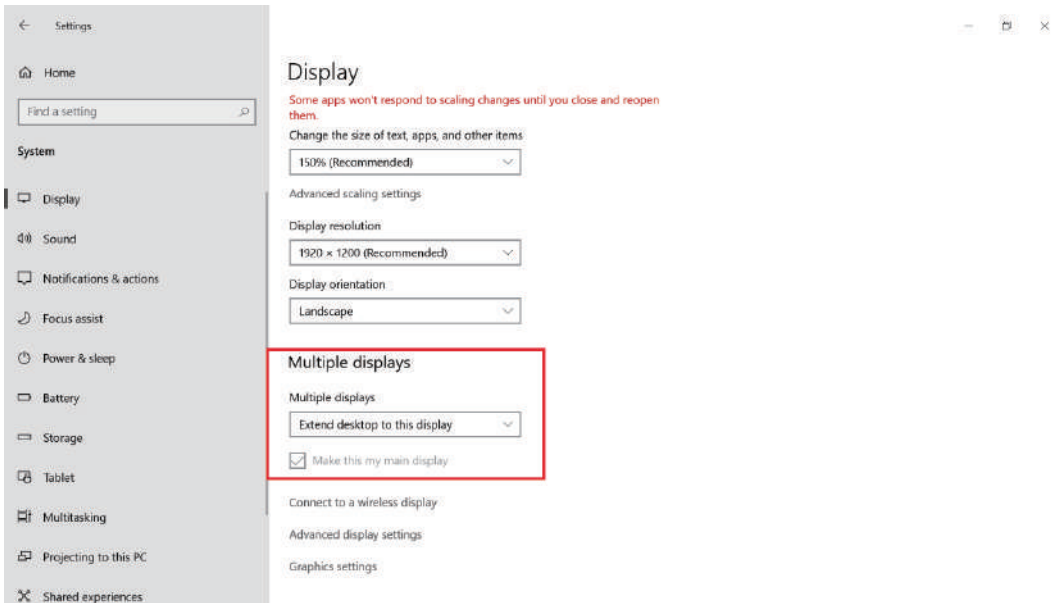
6.2 Windows Display Settings and Configuration

- 1 Right-click the desktop and select either Screen Resolution (Windows 7/8) or Display Settings (Windows 10/11).
- 2 Click Detect to check if the dual monitor is connected successfully. If yes, please click Identify to confirm the screen location. Then long drag the Screen 1/2/3 to rearrange the screen location based on your preference.



6. Display Setting for Wins/macOS

- 3 Duplicate & Extend Mode Setting: Click the Multiple displays drop-down list, and then select Extend/Duplicate



6. Display Setting for Wins/macOS

6.3 How to Close Single Display Screen

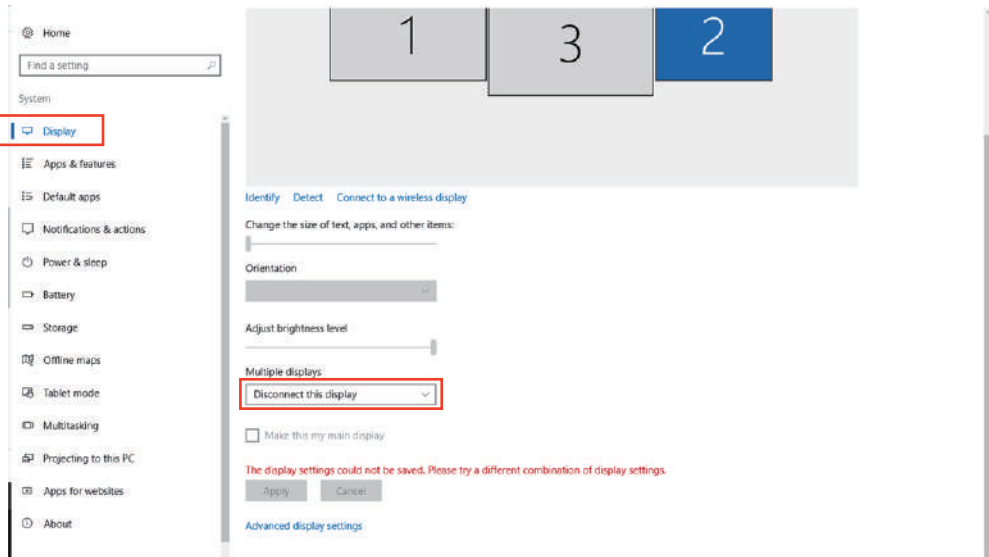
6.3.1 For macOS and Wins Laptop



Long press MENU key for 5s.

6. Display Setting for Wins/macOS

6.3.2 Only For Wins Laptop



In "Display Setting", select the display screen you want disconnect and click "Disconnect this display" in drop-down list.

7. OSD Function Introduction

7.1 OSD Overview



Power button

- Long press for 3s to turn the monitor on/off.

“+” button

- Quickly adjust the brightness;
- Choose the OSD setting subpage;
- In/decrease the value of the setting on OSD.

Menu button

- Press the button to enter OSD menu;
- Press the button again to enter the setting subpage and press to confirm the value.

“-” button


- In/decrease the value of the setting on OSD.

Note: If you don't want to use the OSD menu, no action is needed. The OSD menu will disappear in a few seconds. Or you could press “ - ” button to exit the OSD menu.

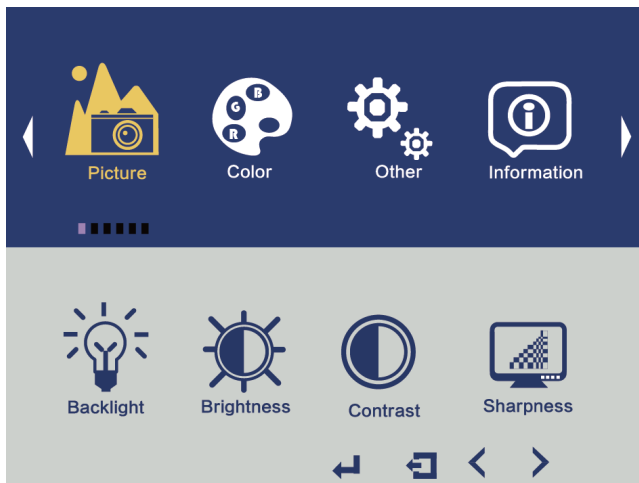
7. OSD Function Introduction

7.2 Restore OSD Default

If you accidentally change the OSD default language setting, please follow the steps below to restore the OSD default value.

- 1 Press the “MENU” button.
- 2 Press the “+” to choose “”, then to press “MENU” button.

7.3 OSD Menu



7. OSD Function Introduction

Picture	Brightness	The adjusting range is from 0 to 100
	Backlight	The adjusting range is from 0 to 100
	Contrast	The adjusting range is from 0 to 100
	Sharpness	The adjusting range is from 0 to 100
Color	Temperature	9300/7500/6500/5800/sRGB/User
	Color Effect	Standard/Game/Movie/Phone/Vivid
	HUE	The adjusting range is from 0 to 100
	Saturation	The adjusting range is from 0 to 100
Other	Reset	Selects RESET to revert all settings to the factory default mode
	Menu Time	The adjusting range is from 10 to 60
	OSD H Position	The adjusting range is from 0 to 100
	OSD V Position	The adjusting range is from 0 to 100
	Language	English & Chinese
	Transparency	The adjusting range is from 0 to 100
Information		
Factory		

8. Tech Specs

Product name	FLEX Portable Dual Monitor	Weight	2146g
Viewable area	310(H)*175mm	Screen size (inch)	14inch*2
LCD	1080P FHD IPS	Product size (mm)	353mm*208mm*30mm
Aspect ratio	16:9	Resolution	1920*1080
Color	16.7M	Temperature(K)	6500K
Viewing angle	H: 89°/89°Min V: 89°/89°Min	Refresh rate	60Hz
Contrast	1000: 1	brightness (cd/m²)	280±20cd/m ²
sRGB color gamut	72%	Speaker	N/A
Input Interface	Type-C Full Function Port*1 (for video output & power supply) Type-C Power Port*1 (only for power supply)		
System Requirement	macOS, Windows, Android systems		

9. Use requirements & Cleaning & Maintenance

In order to ensure the normal use of this product and prevent accidents such as electric shock and fire, please read and understand all usage requirements and operating procedures before using this product.

Please strictly abide by the following requirements:

- Be careful to avoid excessive humidity and dust, so as not to cause malfunction due to circuit corrosion.
- Do not squeeze the screen surface;
- Please use a screen wiper to clean the monitor. Do not connect the monitor to devices while cleaning.
- Do not use cleaning liquids containing alcohol/acid to clean the screen.
- When the screen goes black or flickers or does not work, please contact us for help. Do not repair the screen by yourself.
- When you stop using the monitor, please disconnect the power supply in time.

10. FAQ & Contact Us

Questions	Answer
The screen flickers or disappears for a moment	Your laptop battery is low. Please use included 5V/3A power adapter to charge this dual monitor.
The dual monitor screen goes black	When your laptop enters sleep mode, the monitor also goes to sleep mode. Please wake up your laptop and press the display screen power button to wake up the monitor.
The dual monitor shows "no signal"	<ol style="list-style-type: none">1) Please make sure that your laptop comes with a full-function Type-C port, which supports video output, or the monitor will fail to be connected;2) Please make sure that your laptop could provide at least 5V/3A power, or please plug included power adapter to power the monitor up;3) Please replace the USB-C to USB-C cable to test if the cable is damaged. Note: The USB C-C cable should be USB C 3.1 Version which supports video output;4) If the monitor still shows "no signal", please feel free to contact us.
The stand seems unstable	Please ensure you have fully opened the kickstand and the 2-screen display.