

Model 101-1064

Full product specifications: [www.humancentric.com/101-1064](http://www.humancentric.com/101-1064)

Need help? Contact support: [support@humancentric.com](mailto:support@humancentric.com)



### WARNING



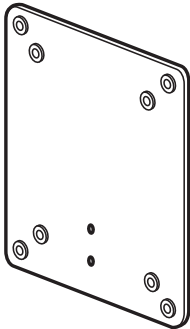
To reduce the risk of injury to persons, read all important precautions and warnings listed below. HumanCentric assumes no responsibility for personal injury or property damage sustained by or through the use of this product:

1. Read all instructions carefully.
2. Incorrect installation may lead to damage or serious injury. Ensure the product is secured before use.
3. If using a VESA stand or VESA arm, ensure it can support the combined weight of the bracket, monitor, and any mounted devices.

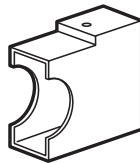
Compatible with models:

M22F, M24F, M24FW, M24FD, M24FWA, M27F, M27FD, M27FQ, M27FW, M27FWA, M32F

### PARTS INCLUDED



**A (x1)**  
VESA Adapter Plate



**B (x1)**  
Monitor Adapter



**C (x5)**  
M4 x 12mm Panhead Screw



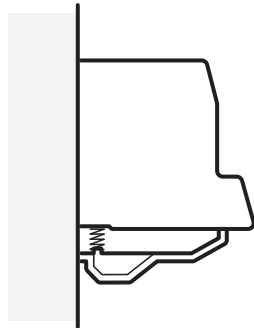
**D (x2)**  
M4 x 10mm Flat Head Screw

### ADDITIONAL TOOLS REQUIRED

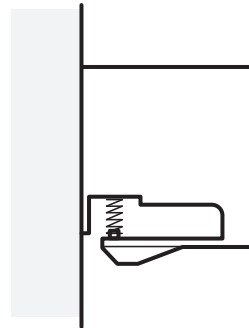
Phillips Screw Driver

1

Note which geometry your monitor attachment point has and move to the next step.



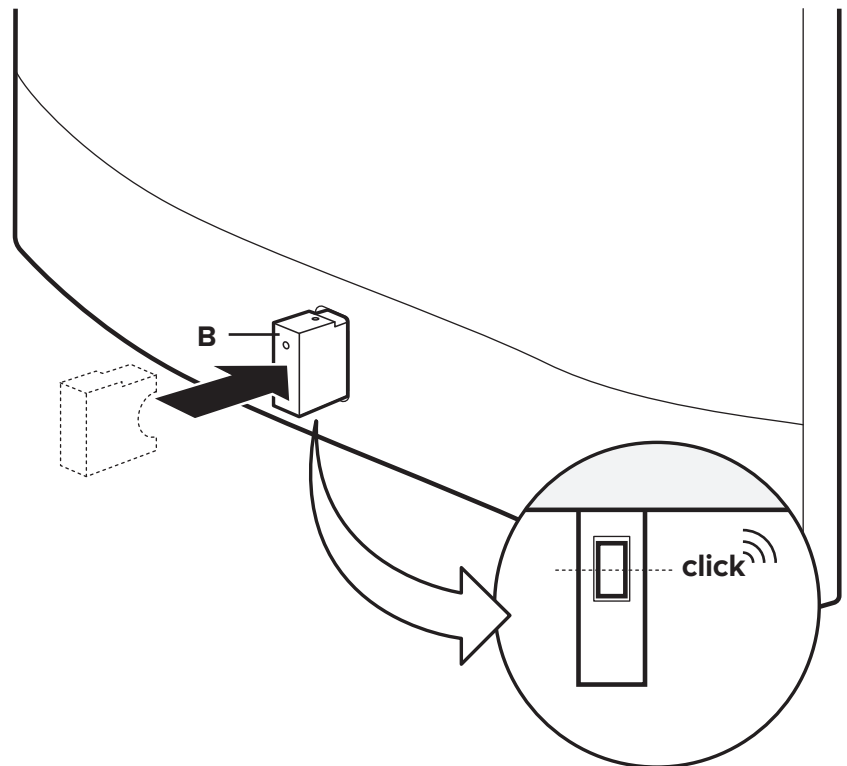
Geometry A



Geometry B

2

Orientate the Monitor Adapter (B) with the square cutout toward the bottom and push onto the monitor attachment point. Make sure that the adapter is fully pushed on and the button is fully seated in the square cutout. You will hear a “click” when the button seats.

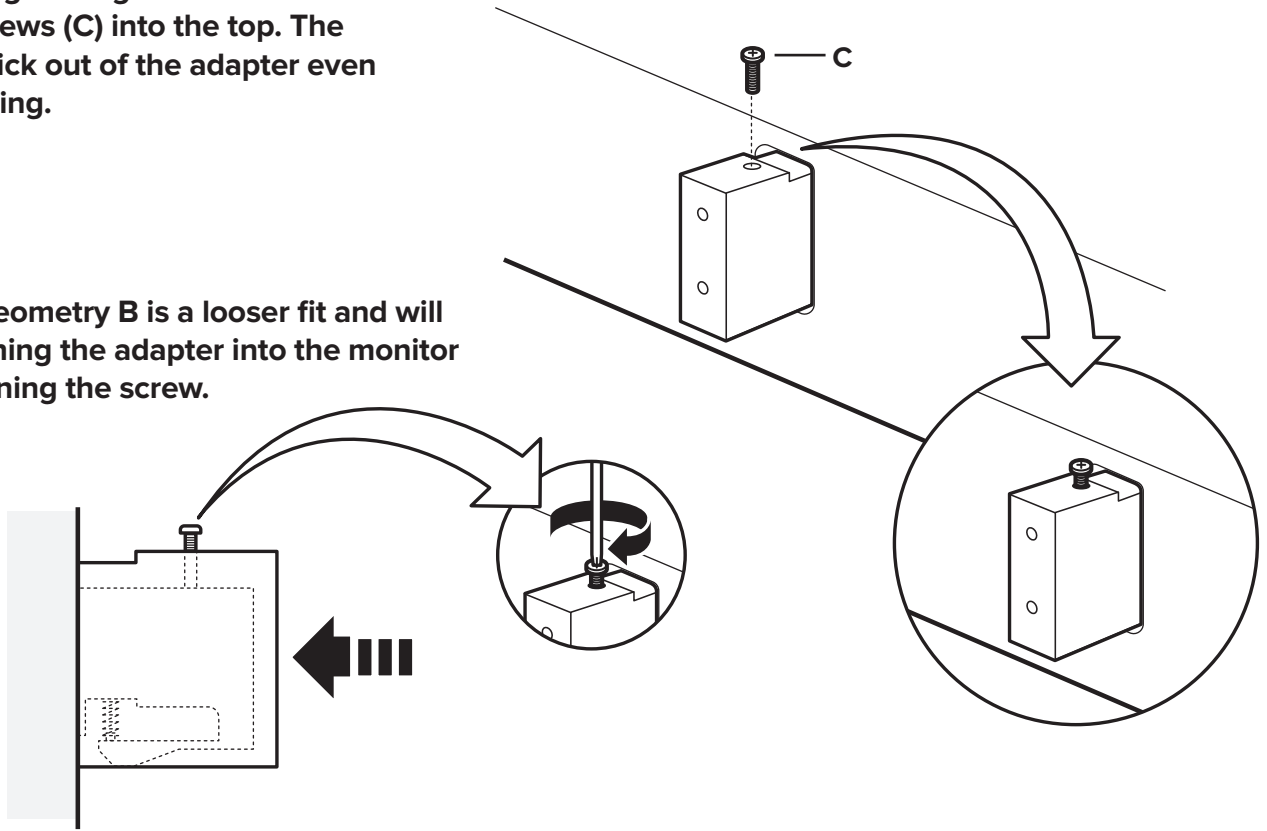


3

Secure the Monitor Adapter onto the monitor by tightening one of the panhead screws (C) into the top. The screw will stick out of the adapter even after tightening.

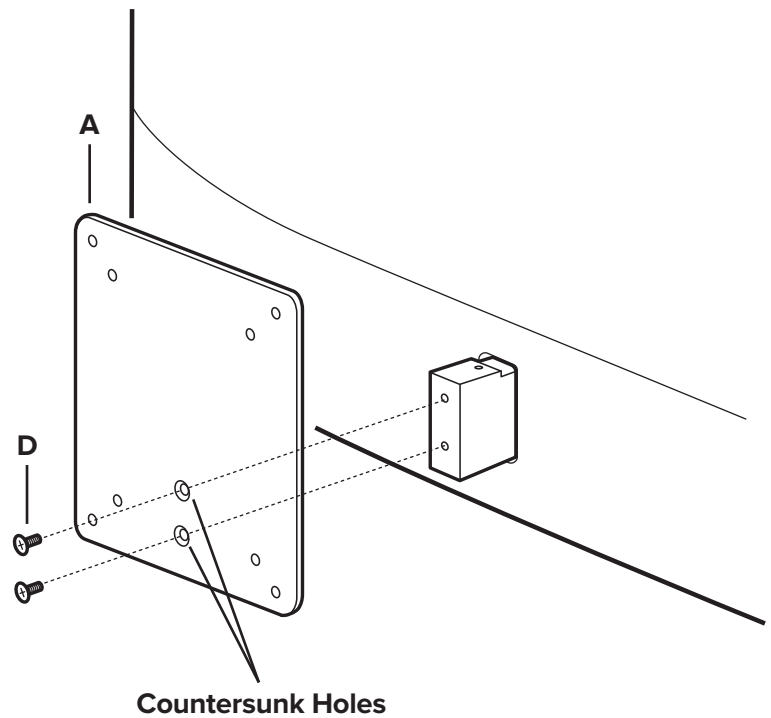


Note that Geometry B is a looser fit and will require pushing the adapter into the monitor while tightening the screw.



4

Secure the VESA Adapter Plate (A) to the Monitor Adapter using two flat head screws (D). The screws should sit flush with the plate surface in the countersunk holes.



Mount the monitor to your VESA  
Mount using four panhead screws (C).

