



VESA Mount Adapter for Apple® 20 inch, 23 inch, and 30 inch Cinema Displays® (compare to Apple® M9649G/A)

www.humancentric.com/patents

Model 101-1039

Full product specifications: www.humancentric.com/101-1039

Need help? Contact support: support@humancentric.com



WARNING

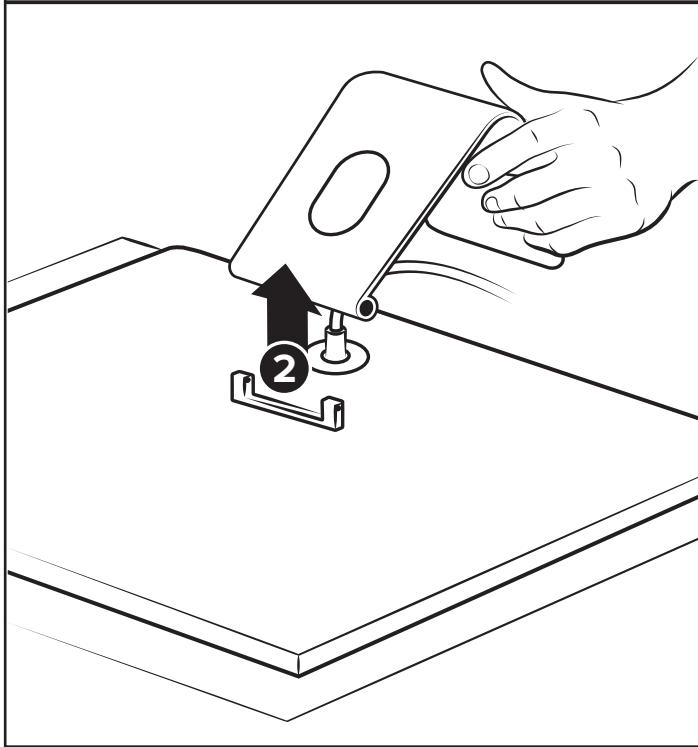
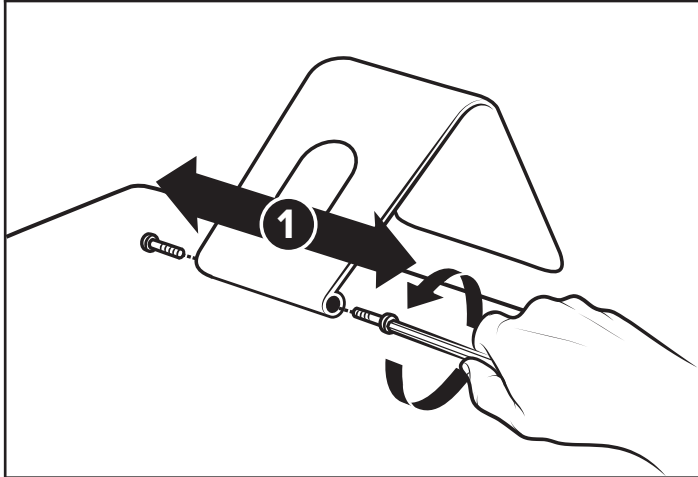


To reduce the risk of injury to persons, read all important precautions and warnings listed below. HumanCentric assumes no responsibility for personal injury or property damage sustained by or through the use of this product:

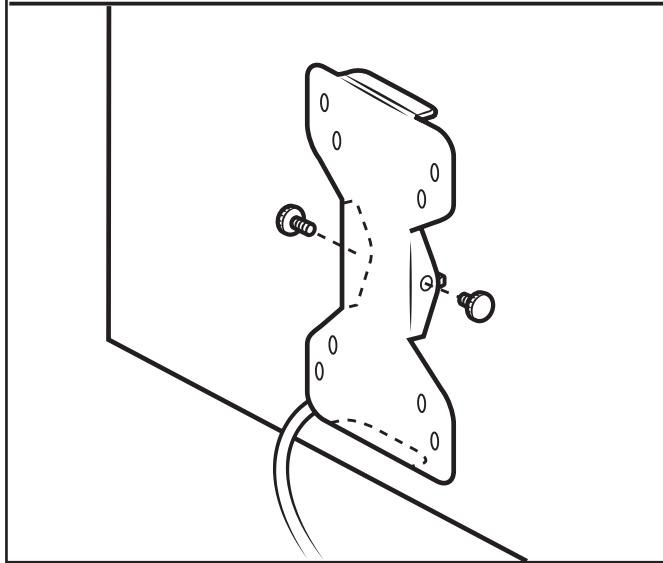
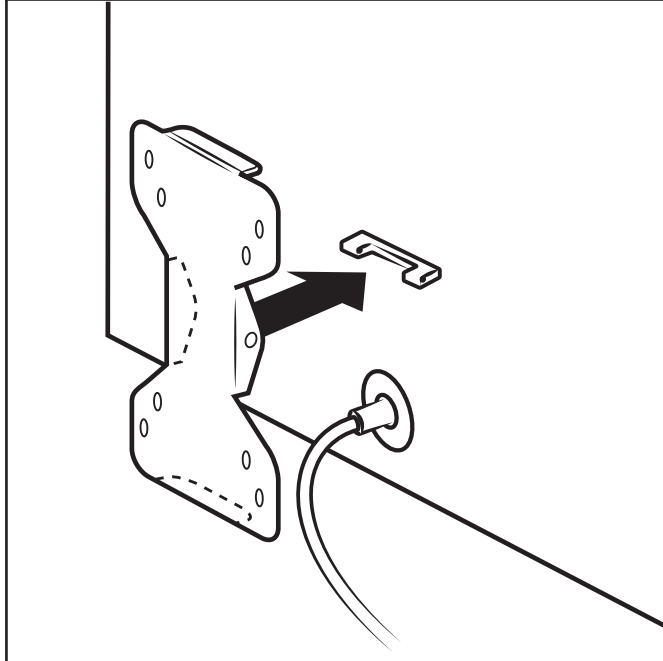
1. Read all instructions carefully.
2. Incorrect installation may lead to damage or serious injury. Ensure the product is secured before use.
3. If using a VESA stand or VESA arm, ensure it can support the combined weight of the bracket, monitor, and any mounted devices.

ENGLISH 	DEUTSCH 	FRANÇAIS 	ITALIANO 	ESPAÑOL 
<p>VESA Mount Adapter for Apple® 20 inch, 23 inch, and 30 inch Cinema Displays® (compare to Apple M9649G/A)</p>	<p>VESA Adapterhalterung für Apple® 20 inch, 23 inch, und 30 inch Cinema Bildschirm®</p>	<p>Adaptateur de monture VESA pour Apple® 20 pouces, 23 pouces, et 30 pouces Cinema Display®</p>	<p>Staffa di adattamento supporto VESA per Apple® 20", 23", e 30" Cinema Display®</p>	<p>Montaje VESA para Apple® Monitores Cinemas® 20 pulgadas, 23 pulgadas, y 30 pulgadas</p>
<p>Parts included</p> <p>Mounting bracket 1 Installation screws 2 Allen wrench 1 VESA screws 4</p>	<p>Enthaltene Teile</p> <p>Halterung 1 Installationsschrauben 2 Inbusschlüssel 1 VESA-Schrauben 4</p>	<p>Pièces fournies</p> <p>Support de fixation 1 Vis de montage 2 Clé Allen 1 Vis VESA 4</p>	<p>Parti incluse</p> <p>Soporte 1 Tornillos de instalación..... 2 Llave Allen 1 Tornillos VESA 4</p>	<p>Partes incluidas</p> <p>Staffa di supporto 1 Viti di montaggio 2 Chiave a brugola 1 Viti VESA 4</p>
<p>Tools needed for installation</p> <p>Phillips head screwdriver A friend to help you hold the monitor (recommended)</p>	<p>Für die Montage benötigen Sie</p> <p>Kreuzschlitzschraubendreher Jemanden, der Ihnen beim Halten des Monitors hilft</p>	<p>Outils nécessaires au montage</p> <p>Tournevis Phillips Une personne pour vous aider à tenir l'écran (recommandé)</p>	<p>Attrezzi necessari per l'installazione</p> <p>Cacciavite a croce Per il montaggio si consiglia di farsi aiutare da una seconda persona</p>	<p>Herramientas necesarias para la instalación</p> <p>Destornillador de cabeza Phillips Alguien que sujete el monitor (recomendado)</p>
<p>Compatible with models</p> <p>Fits 20-inch Apple® Cinema Display®, 23- and 30-inch Apple® Cinema Display® (Anodized Aluminum)</p> <p>Additional models may also be compatible. Check our online listings for the most recent compatibility updates.</p>	<p>Kompatibel mit Modellen</p> <p>S'adapte aux écrans Apple® 20 pouces Cinema Display®, 23 pouces Cinema Display®, et 30 pouces Cinema Display® (aluminium)</p> <p>Kann auch für weitere Modelle geeignet sein. In unseren Online-Listings finden Sie die aktuellsten Listen kompatibler Modelle.</p>	<p>Compatible avec les modèles</p> <p>S'adapte aux écrans Apple® 20 pouces Cinema Display®, 23 pouces Cinema Display®, et 30 pouces Cinema Display® (aluminium)</p> <p>D'autres modèles peuvent également être compatibles. Vérifiez en ligne les dernières mises à jour en terme de compatibilité.</p>	<p>Modelli compatibili</p> <p>Compatibile con Apple® 20" Cinema Display®, 23" Cinema Display®, e 30" Cinema Display® (alluminio)</p> <p>Potrebbero essere compatibili anche con altri modelli. Consulta il nostro listino online per aggiornarti su tutti i nuovi modelli compatibili.</p>	<p>Compatibilidad con los modelos</p> <p>Compatible con monitores Monitores Cinema® 20 pulgadas, Monitores Cinema® 23 pulgadas, y Monitores Cinema® 30 pulgadas (Aluminio) de Apple®</p> <p>Otros modelos también pueden ser compatibles. Comprueba nuestros productos online para conocer las actualizaciones más recientes en cuanto a compatibilidad.</p>

1



2



3

