

REASONS FOR CHOOSING GREENSCREENPAINT:

- A water-based matt green wall paint that turns walls and objects into a greenscreen.
- Environmentally friendly and safe to apply indoors.
- Suitable for editing video recordings with the Chromakey technique.
- Quick and easy to apply with a short-haired roller.
- Ready for use.
- Easily combined with MagnetPaint from MagPaint.

TIP:

Create a mobile greenscreen by applying GreenscreenPaint on a loose wall and film wherever you want.



GREENSCREENPAINT

GREENSCREENPAINT FROM MAGPAINT:
PAINT THAT BRINGS YOUR IMAGINATION TO LIFE!



www.cleverpaint.co.uk · sales@cleverpaint.co.uk · +44 (0)1341 555 087



GREEN SCREEN PAINT

TURN YOUR OWN WALL INTO A GREEN-SCREEN AND... ACTION!



GREENSCREENPAINT. APPLY AND 'ACTION'!

GREENSCREENPAINT is the solution if you are looking for a greenscreen. At home or at work, always easy to apply and use.

Are you vlogging and do you want to 'broadcast' from New York? Provide a video presentation in front of a flourishing tulip field for colleagues in Asia? You can do all that with your own greenscreen.

For the best result, apply **GREENSCREENPAINT** to a smooth and flat surface.

MAGNETPAINT

Make your greenscreen magnetic with MagnetPaint from MagPaint.



GREENSCREENPAINT

GREENSCREENPAINT FROM MAGPAINT: TURNS EVERYONE INTO A FILM PRODUCER!

Looking for a pretty, unique or distant location for your video recording? With the green GreenscreenPaint from MagPaint, the world is at your feet.

AT HOME

We increasingly use our own video recordings. To vlog, to create our own music videos, or even an entire film. You can use the natural environment for that, but you can also take things one step further. How about vlogging from Times Square in New York without the need to travel there? GreenscreenPaint makes it possible.

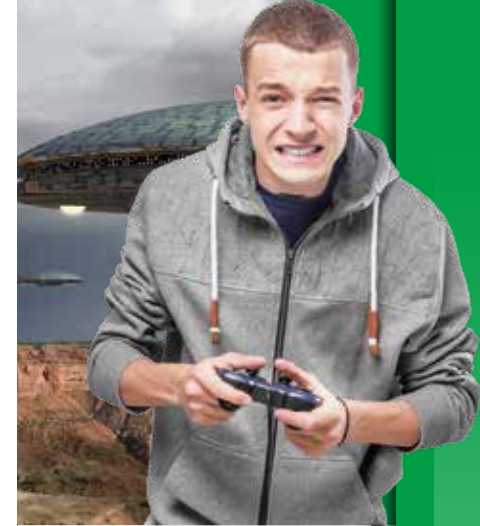
AT WORK

Video is also being increasingly used as a communication tool in business. An instructional video or presentation can easily and quickly be made much more attractive by placing the presenter in a suitable environment.

HOW DOES IT WORK?

By filming a character or object in front of the green wall, you can add any desired background later using the Chromakey technique. Make sure the subject in front of your greenscreen background is not green or that persons are not wearing green clothing. In addition, the lighting needs to be set accordingly. There can be no shadows on the background. That is why an object often has to be at least three meters away from the screen, and you also need lighting from the rear. Take into account that fluttering hairs often cause problems; they are too thin to be perceived by the computer, which may cause the hairs to disappear.

Use a video editing programme – such as Adobe Premiere Pro, iMovie, Magix Video Deluxe, Pinnacle Studio Plus, Sony Vegas, etc. - to add any desired background to your video.



GREENSCREENPAINT
from MagPaint is
available in 500 ml and
1,000 ml cans.