



2024 PRODUCT CATALOG

ABOUT US



Experience your nighttime hunts in a whole new light with X-Vision Optics. Every time you head out, you'll own the night with a powerful combination of advanced technology and unmatched performance. And you'll get it all for a great price. To learn more about our product offering, please visit our website at xvisionoptics.com or follow us on socials [@xvisionoptics](https://twitter.com/xvisionoptics).

TABLE OF CONTENTS

IMPACT SERIES

TS350 Thermal Scope.....	3-4
TS250 Thermal Scope.....	5-6
TS150 Thermal Scope.....	7-8

FLEX SERIES

TR2 Thermal Reflex Sight.....	9-10
TR1 Thermal Reflex Sight.....	11-12
TRW1 Thermal Reflex Sight.....	13-14
TRH Thermal Reflex Accessory.....	15-16

INFINITY SERIES

TM105 Thermal Monocular.....	17-18
TM55 Thermal Monocular.....	19-20

BEYOND SERIES

TB300 Thermal Binocular.....	21-22
TB200 Thermal Binocular.....	23-24

PHANTOM SERIES

XANB55 Night Vision Binocular.....	25-26
XANB50 Night-Vision Binocular.....	27-28

SHADOW SERIES

XANB37 Night Vision Binocular.....	29-30
XANB22 Night Vision Binocular.....	31-32
MNV100 Night Vision Miniviewer.....	33-34

FUSION SERIES

XANR100 Night Vision Rangefinder.....	35-36
---------------------------------------	-------

MERIDIAN SERIES

XANF100 Night Vision Flashlight.....	37-38
--------------------------------------	-------

IMPACT SERIES

TS350 THERMAL SCOPE

MAGNIFICATION: 2 - 16X

THERMAL SENSOR: 640 X 480

PIXEL SIZE: 12 μ m

FRAME RATE: 50HZ

OBJECTIVE LENS: 35 MM

FIELD OF VIEW: 12.38° x 9.38°

DETECTION RANGE: 1,500YD

RECOGNITION RANGE: 500YD

HOTSPOT TRACKING: YES

RANGEFINDING: YES

PICTURE IN PICTURE: YES

NOISE EQUIVALENT TEMPERATURE DIFFERENCE (NETD): \leq 30 MK

TEMPERATURE VARIATION DETECTION: 0.05° F

DISPLAY RESOLUTION: 1024 X 768 OLED

RETICLE: 10 PATTERNS AND 6 COLOR OPTIONS

COLOR PALETTES: 6

POWER SUPPLY: RECHARGEABLE 3.6V LITHIUM-ION (1 INC.)

BATTERY LIFE: 8 HR

IP RATING: IP67

DIMENSIONS: 8.19 x 3.46 x 2.59 IN

WEIGHT: 1.2 LB

INTERNAL MEMORY: 32 GB

MOUNT: PICATINNY

WI-FI CAPABILITY: YES

PHOTO AND VIDEO: YES

APPLICATIONS: APPLE IOS & GOOGLE PLAY

ACCESSORIES: DUAL BATTERY CHARGER, CHARGING CABLE, PROTECTIVE CASE, SCOPE RINGS, LENS CLOTH, RUBBER EYE PIECE, LENS CAP, RECHARGEABLE BATTERY



MODEL: TS350 **SKU:** 203223



This all-new, long-range scope is about leading-edge tech, unmatched performance, and a get-more-than-what-you-paid-for-it price. At the heart of this innovative scope is a 640 x 480 mission-ready thermal sensor. It can detect whatever you're hunting up to 1,500 yards—even through the thickest brush. You'll get dead-on accurate distances with the built-in stadiametric rangefinder. And with a fistful of color and palette options, you'll make this thermal scope exclusively yours. Plus, it's protected by a tough-as-nails chassis and casing that stands up to Mother Nature's foulest moods.

IMPACT SERIES

TS250 THERMAL SCOPE

MAGNIFICATION: 4.7 - 18.8X

THERMAL SENSOR: 384 X 288

PIXEL SIZE: 12µm

FRAME RATE: 50HZ

OBJECTIVE LENS: 50 MM

FIELD OF VIEW: 5.27° x 3.95°

DETECTION RANGE: 2,200YD

RECOGNITION RANGE: 725YD

HOTSPOT TRACKING: YES

RANGEFINDING: YES

PICTURE IN PICTURE: YES

NOISE EQUIVALENT TEMPERATURE DIFFERENCE (NETD): ≤30 MK

TEMPERATURE VARIATION DETECTION: 0.05° F

DISPLAY RESOLUTION: 1024 X 768 OLED

RETICLE: 10 PATTERNS AND 6 COLOR OPTIONS

COLOR PALETTES: 6

POWER SUPPLY: RECHARGEABLE 3.6V LITHIUM-ION (1 INC.)

BATTERY LIFE: 8 HR

IP RATING: IP67

DIMENSIONS: 8.62 x 3.46 x 2.59 IN

WEIGHT: 1.3 LB

INTERNAL MEMORY: 32 GB

MOUNT: PICATINNY

WI-FI CAPABILITY: YES

PHOTO AND VIDEO: YES

APPLICATIONS: APPLE IOS & GOOGLE PLAY

ACCESSORIES: DUAL BATTERY CHARGER, CHARGING CABLE, PROTECTIVE CASE, SCOPE RINGS, LENS CLOTH, RUBBER EYE PIECE, LENS CAP, RECHARGEABLE BATTERY



MODEL: TS250 **SKU:** 203222



This 4.7 to 18.8x scope delivers the deadly combination of high-tech, outstanding performance—and great price. The 384 x 288 military-grade thermal sensor detects game past 2,200 yards. And the built-in rangefinder will give you dead-on accurate distances. Customize your viewing and reticle preferences with a variety of options. Plus, sharing photos and videos with friends is fast and easy. There's also a tough-as-nails chassis and casing that keeps the internals protected no matter what conditions you hunt in.

IMPACT SERIES

TS150 THERMAL SCOPE

MAGNIFICATION: 2.4 - 9.6X

THERMAL SENSOR: 384 x 288

PIXEL SIZE: 12 μ m

FRAME RATE: 50HZ

OBJECTIVE LENS: 25 MM

FIELD OF VIEW: 10.44° x 7.87°

DETECTION RANGE: 1,100YD

RECOGNITION RANGE: 475YD

HOTSPOT TRACKING: YES

RANGEFINDING: YES

PICTURE IN PICTURE: YES

NOISE EQUIVALENT TEMPERATURE DIFFERENCE (NETD): \leq 30 MK

TEMPERATURE VARIATION DETECTION: 0.05° F

DISPLAY RESOLUTION: 1024 X 768 OLED

RETICLE: 10 PATTERNS AND 6 COLOR OPTIONS

COLOR PALETTES: 6

POWER SUPPLY: RECHARGEABLE 3.6V LITHIUM-ION (1 INC.)

BATTERY LIFE: 8 HR

IP RATING: IP67

DIMENSIONS: 7.95 x 3.46 x 2.59 IN

WEIGHT: 1.2 LB

INTERNAL MEMORY: 32 GB

MOUNT: PICATINNY

WI-FI CAPABILITY: YES

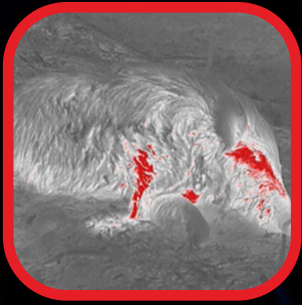
PHOTO AND VIDEO: YES

APPLICATIONS: YES

ACCESSORIES: DUAL BATTERY CHARGER, CHARGING CABLE, PROTECTIVE CASE, LENS CLOTH, RUBBER EYE PIECE, LENS CAP, RECHARGEABLE BATTERY



MODEL: TS150 **SKU:** 203221



Bring the heat during nighttime hunts. This price-friendly 2.4 to 9.6x scope delivers everything you'd expect from more expensive options. To start, there's a 384 x 288 mission-ready thermal sensor capable of detecting game up to 1,100 yards. Plus, there's a built-in rangefinder. The reticle and color palette are easy to customize, while integrated photo and video helps you share your hunts. And no matter what conditions you hunt in, the rugged casing keeps performance at a peak.

FLEX SERIES

TR2 THERMAL REFLEX SIGHT

MAGNIFICATION: 1 - 4X
THERMAL SENSOR: 384 X 288
PIXEL SIZE: 12µm
FRAME RATE: 50HZ
OBJECTIVE LENS: 25 MM
FIELD OF VIEW: 10.5° x 7.9°
DETECTION RANGE: 1,700YD
RECOGNITION RANGE: 750YD
HOTSPOT TRACKING: NO
STADIAMETRIC RANGEFINDING: YES
PICTURE IN PICTURE: YES
NOISE EQUIVALENT TEMPERATURE DIFFERENCE (NETD): ≤50 MK
TEMPERATURE VARIATION DETECTION: 0.08° F
DISPLAY RESOLUTION: 1024 X 768 OLED
RETICLE: 10 PATTERNS AND 6 COLOR OPTIONS
COLOR PALETTES: 5
POWER SUPPLY: RECHARGEABLE 18500 BATTERY (18650 COMPATIBLE)
BATTERY LIFE: 5 HR
IP RATING: IP67
DIMENSIONS: 2.6 x 3.54 x 3.46 IN
WEIGHT: 1.05 LB
INTERNAL MEMORY: 32GB
MOUNT: QUICK RELEASE PICATINNY
WI-FI CAPABILITY: NO
PHOTO AND VIDEO: YES
APPLICATIONS: NO
ACCESSORIES: DUAL BATTERY CHARGER, CHARGING CABLE, PROTECTIVE CASE, LENS CLOTH, LENS CAP, RECHARGEABLE BATTERY (2 INC.)



MODEL: TR2 **SKU:** 203212



This 1-4x magnification thermal sight is at the heart of the X-Vision lineup. With the military-grade sensor and optics, you'll detect game out to 1,700 yards. And when the moment of truth comes? You'll see your target with exceptional clarity, and through your easily-customized color-palette and reticle selection. Plus, you'll share the highlights of your hunts quickly and easily with integrated photos and video. And thanks to the rugged, waterproof chassis and casing, you'll get the performance you're after under all conditions.

FLEX SERIES

TR1 THERMAL REFLEX SIGHT

- MAGNIFICATION:** 1 - 4X
- THERMAL SENSOR:** 320 x 280
- PIXEL SIZE:** 17 μ m
- FRAME RATE:** 25HZ
- OBJECTIVE LENS:** 13 MM
- FIELD OF VIEW:** 23.6° x 20.7°
- DETECTION RANGE:** 1,500YD
- RECOGNITION RANGE:** 600YD
- HOTSPOT TRACKING:** NO
- STADIAMETRIC RANGEFINDING:** NO
- PICTURE IN PICTURE:** NO
- NOISE EQUIVALENT TEMPERATURE DIFFERENCE (NETD):** \leq 40 MK
- TEMPERATURE VARIATION DETECTION:** 0.07° F
- DISPLAY RESOLUTION:** 1024 X 768 OLED
- RETICLE:** 4 PATTERNS AND 4 COLOR OPTIONS
- COLOR PALETTES:** 5
- POWER SUPPLY:** RECHARGEABLE CR123 WITH POWERBANK COMPATIBILITY
- BATTERY LIFE:** 4 HR
- IP RATING:** IP67
- DIMENSIONS:** 2.3 x 3.17 x 2.9 IN
- WEIGHT:** 0.55 LB
- INTERNAL MEMORY:** NO
- MOUNT:** QUICK RELEASE PICATINNY
- WI-FI CAPABILITY:** NO
- PHOTO AND VIDEO:** NO
- APPLICATIONS:** NO
- ACCESSORIES:** DUAL BATTERY CHARGER, CHARGING CABLE, RECHARGEABLE BATTERY (2 INCL)



MODEL: TR1 **SKU:** 203210



With game detection out to 1,500 yards—even through thick brush—this innovative sight will help bring a new level of success to your nighttime hunts. The story of this sight starts with an advanced, mission-ready sensor that delivers crisp, clean images. And sharing your hunts has never been easier with photo and video capability. Plus, with a waterproof casing, it's ready to go whenever you are. Bottom line? You're getting a range of features that guarantee a lot of bang for your buck.

FLEX SERIES

TRW1 THERMAL REFLEX SIGHT

MAGNIFICATION: 1 - 4X

THERMAL SENSOR: 240 X 210

PIXEL SIZE: 17 μ m

FRAME RATE: 25HZ

OBJECTIVE LENS: 6.8 MM

FIELD OF VIEW: 33.4° x 29.4°

DETECTION RANGE: 500YD

RECOGNITION RANGE: 225YD

HOTSPOT TRACKING: NO

STADIAMETRIC RANGEFINDING: NO

PICTURE IN PICTURE: NO

NOISE EQUIVALENT TEMPERATURE DIFFERENCE (NETD): \leq 40 MK

TEMPERATURE VARIATION DETECTION: 0.07° F

DISPLAY RESOLUTION: 1024 X 768 OLED

RETICLE: 4 PATTERNS AND 4 COLOR OPTIONS

COLOR PALETTES: 4

POWER SUPPLY: RECHARGEABLE CR123

BATTERY LIFE: 3.5 HR

IP RATING: IP67

DIMENSIONS: 2.3 x 3.17 x 2.9 IN

WEIGHT: 0.55 LB

INTERNAL MEMORY: NO

MOUNT: QUICK RELEASE PICATINNY

WI-FI CAPABILITY: NO

PHOTO AND VIDEO: NO

APPLICATIONS: NO

ACCESSORIES: DUAL BATTERY CHARGER, CHARGING CABLE, RECHARGEABLE BATTERY (2 INCL)



MODEL: TRW1 **SKU:** 203211



With a wide field of view, this compact, lightweight and top-performing 4x sight gives you a tactical advantage that's perfect for closer-range hunting. Target acquisition is fast and easy—and you have plenty of notice game is nearby with a 500 yard detection range. The 240 x 210 sensor delivers crisp, clean images with your choice of color and reticle options. Plus, with a waterproof, dustproof casing, it's always ready to go.

FLEX SERIES HANDLE

TRH THERMAL REFLEX SIGHT ACCESSORY

COLOR: BLACK

BATTERY STORAGE: YES

WEIGHT: 0.45 LB

IP RATING: IP67

MOUNT: PICATINNY RAIL

DIMENSIONS: 6 X 1.5 X 1.51 IN



MODEL: TRH **SKU:** 202200



The Thermal Reflex Handle is the perfect accessory with your thermal reflex sight for everyday carry, hunting, scanning, and tracking. The device features a picatinny rail to allow the thermal reflex sight (TR1, TRW1, TR2) to be quickly and easily attached or detached from its mount. The thermal reflex handle has a textured non-slip handle made of high-quality and durable material. This handle supports your home security efforts when scanning and surveilling, so that you don't have to keep the device mounted on a rifle for scanning.

INFINITY SERIES

TM105 Thermal Monocular

MAGNIFICATION: 2.3 - 9.2X

THERMAL SENSOR: 400 X 300

PIXEL SIZE: 17 μ m

FRAME RATE: 50HZ

OBJECTIVE LENS: 35 MM

FIELD OF VIEW: 11.1° x 8.3°

DETECTION RANGE: 1,100YD

RECOGNITION RANGE: 475YD

HOTSPOT TRACKING: YES

STADIAMETRIC RANGEFINDING: YES

PICTURE IN PICTURE: YES

NOISE EQUIVALENT TEMPERATURE DIFFERENCE (NETD): \leq 30 MK

TEMPERATURE VARIATION DETECTION: 0.05° F

DISPLAY RESOLUTION: 1280 X 960 LCOS

RETICLE: NO

COLOR PALETTES: 5

POWER SUPPLY: BUILT-IN LITHIUM-ION BATTERIES

BATTERY LIFE: 5 HR

IP RATING: IP66

DIMENSIONS: 7.5 x 2.5 x 2.8 IN

WEIGHT: 1 LB

INTERNAL MEMORY: 16 GB

MOUNT: TRIPOD MOUNT

WI-FI CAPABILITY: YES

PHOTO AND VIDEO: YES

APPLICATIONS: APPLE IOS & GOOGLE PLAY

ACCESSORIES: CHARGING CABLE, PROTECTIVE CASE, LANYARD, HDMI CABLE, RUBBER LENS CAP



MODEL: TM105 **SKU:** 201240



Bring the night to life with this advanced-tech, top-performing 2.3 to 9.2x monocular. It detects game 1,100 yards away with a 400 x 300 sensor that delivers crisp, clean images right in the palm of your hand. And with built-in rangefinder, WiFi, and photo and video capabilities, you'll be able to share every detail of your nighttime hunts. Plus, no matter what conditions you're in, the internals are protected by a tough-as-nails casing.

INFINITY SERIES

TM55 Thermal Monocular

MAGNIFICATION: 0.7 - 1.4X
THERMAL SENSOR: 256 X 192
PIXEL SIZE: 12µm
FRAME RATE: 50HZ
OBJECTIVE LENS: 10 MM
FIELD OF VIEW: 17.5° x 13.2°
DETECTION RANGE: 500YD
RECOGNITION RANGE: 175YD
HOTSPOT TRACKING: YES
RANGEFINDING: YES (IN APP ONLY)
PICTURE IN PICTURE: YES
NOISE EQUIVALENT TEMPERATURE DIFFERENCE (NETD): ≤50 MK
TEMPERATURE VARIATION DETECTION: 0.08° F
DISPLAY RESOLUTION: 640 X 400 AMOLED
RETICLE: NO
COLOR PALETTES: 5
POWER SUPPLY: RECHARGEABLE 18650 BATTERY (1 INCL)
BATTERY LIFE: 12 HR
IP RATING: IP66
DIMENSIONS: 5.51 x 2.91 x 1.77 IN
WEIGHT: 0.62 LB
INTERNAL MEMORY: NO
MOUNT: TRIPOD MOUNT
WI-FI CAPABILITY: YES
PHOTO AND VIDEO: YES (IN APP ONLY)
APPLICATIONS: APPLE IOS & GOOGLE PLAY
ACCESSORIES: CHARGING CABLE, PROTECTIVE CASE, WRIST LANYARD, HDMI CABLE, RUBBER LENS CAP



MODEL: TM55 **SKU:** 201230



Looking for an advanced tech thermal monocular at a great price? This is it. You'll get clean heat signatures of the game you're after up to 500 yards away. As your prey gets within 175 yards the images become sharp and detailed. Plus, you can share photos and video of everything you see quickly and easily with the help of our free app. This monocular is also dust and water-resistant, so it performs even when conditions say it shouldn't.

BEYOND SERIES

TB300 Thermal Binocular

MAGNIFICATION: 2 - 16 X

THERMAL SENSOR: 640 X 480

PIXEL SIZE: 12µm

FRAME RATE: 50HZ

OBJECTIVE LENS: 35 MM

FIELD OF VIEW: 12.52° x 9.41°

DETECTION RANGE: 1,500,YD

RECOGNITION RANGE: 500YD

HOTSPOT TRACKING: YES

RANGEFINDING: YES

PICTURE IN PICTURE: YES

NOISE EQUIVALENT TEMPERATURE DIFFERENCE (NETD): ≤30 MK

TEMPERATURE VARIATION DETECTION: 0.05° F

DISPLAY RESOLUTION: 1024 X 768 AMOLED

RETICLE: NO

COLOR PALETTES: 6

POWER SUPPLY: RECHARGEABLE 3.6V LITHIUM-ION (2 INC.)

BATTERY LIFE: 5.5 HR

IP RATING: IP66

DIMENSIONS: 6.38 x 5.75 x 2.76 IN

WEIGHT: 1.9 LB

INTERNAL MEMORY: 16 GB

MOUNT: TRIPOD

WI-FI CAPABILITY: YES

PHOTO AND VIDEO: YES

APPLICATIONS: APPLE IOS & GOOGLE PLAY

ACCESSORIES: DUAL BATTERY CHARGER, CHARGING CABLE, MICRO HDMI CABLE, CARRYING CASE, RUBBER EYE PIECES, LENS CAP, RECHARGEABLE BATTERIES (2 INC.)



MODEL: TB300 **SKU:** 200300



You'll own the night with this powerful addition to our thermal lineup. This lightweight, durable high-powered binocular with integrated rangefinder, features extraordinary 16x magnification and high-resolution 640 x 480 sensor. Plus, there's photo and video to help you share your nighttime adventures. And you get all this for a price that makes sense. For scouting, hunting, tracking, and recovering, there's no match for the innovative tech and unmatched performance in this does-it-all bino.

BEYOND SERIES

TB200 Thermal Binocular

MAGNIFICATION: 3.2 -12.8X
THERMAL SENSOR: 400 x 300
PIXEL SIZE: 17µm
FRAME RATE: 50HZ
OBJECTIVE LENS: 50 MM
FIELD OF VIEW: 7.78° x 5.84°
DETECTION RANGE: 1,500YD
RECOGNITION RANGE: 500YD
HOTSPOT TRACKING: YES
RANGEFINDING: YES
PICTURE IN PICTURE: YES
NOISE EQUIVALENT TEMPERATURE DIFFERENCE (NETD): ≤30 MK
TEMPERATURE VARIATION DETECTION: 0.05° F
DISPLAY RESOLUTION: 1024 X 768 AMOLED
RETICLE: NO
COLOR PALETTES: 6
POWER SUPPLY: RECHARGEABLE 3.6V LITHIUM-ION (2 INC.)
BATTERY LIFE: 5.5 HR
IP RATING: IP66
DIMENSIONS: 6.38 x 5.75 x 2.76 IN
WEIGHT: 1.9 LB
INTERNAL MEMORY: 16 GB
MOUNT: TRIPOD
WI-FI CAPABILITY: YES
PHOTO AND VIDEO: YES
APPLICATIONS: APPLE IOS & GOOGLE PLAY
ACCESSORIES: DUAL BATTERY CHARGER, CHARGING CABLE, MICRO HDMI CABLE, CARRYING CASE, RUBBER EYE PIECES, LENS CAP, RECHARGEABLE BATTERIES (2 INC.)



MODEL: TB200 **SKU:** 200200



This advanced 3.2 to 12.8x thermal bino brings every detail of the darkness to light. The high-res 400 x 300 mission-ready sensor delivers unfailing performance and superb clarity to nighttime hunts, allowing you to scout, hunt and track like never before. Plus, there's a built-in rangefinder. And integrated photo and video helps you share your nighttime hunts quickly and easily. This binocular will perform under the toughest conditions, thanks to a super-protected casing and chassis.

PHANTOM SERIES

XANB55 Hands-Free Night-Vision Binocular

MAGNIFICATION: 1 - 3X

NIGHT DISTANCE: 200YD

DAY DISTANCE: 400YD

FIELD OF VIEW: 300ft @ 100YD

OBJECTIVE LENS: 20 MM

DIGITAL DISPLAY: WIDE-ANGLE 2 MEGAPIXEL

IR OUTPUT: 850NM

POWER SUPPLY: RECHARGEABLE LITHIUM-ION BATTERY

BATTERY LIFE: 8HR DAY/5HR NIGHT

AUTO SHUTOFF: YES

IP RATING: IP54

IR BRIGHTNESS: 4 LEVELS

SCREEN BRIGHTNESS: 3 LEVELS

DIMENSIONS: 5.51 x 6.30 x 2.60 IN

WEIGHT: 0.74LB

EXTERNAL MEMORY: UP TO 16 GB

PHOTO AND VIDEO: YES

ACCESSORIES: HEAD MOUNT, NECK STRAP, CHARGING CABLE, PROTECTIVE CAS



MODEL: XANB55 **SKU:** 200155



This advanced 3.2 to 12.8x thermal bino brings every detail of the darkness to light. The high-res 400 x 300 mission-ready sensor delivers unfailing performance and superb clarity to nighttime hunts, allowing you to scout, hunt and track like never before. Plus, there's a built-in rangefinder. And integrated photo and video helps you share your nighttime hunts quickly and easily. This binocular will perform under the toughest conditions, thanks to a super-protected casing and chassis.

PHANTOM SERIES

XANB50 Hands-Free Night-Vision Binocular

MAGNIFICATION: 3 - 6X

NIGHT DISTANCE: 200YD

DAY DISTANCE: 400YD

FIELD OF VIEW: 60ft @ 100YD

OBJECTIVE LENS: 20 MM

DIGITAL DISPLAY: WIDE-ANGLE 2 MEGAPIXEL

IR OUTPUT: 850NM

POWER SUPPLY: BUILT-IN RECHARGEABLE LITHIUM-ION BATTERY

BATTERY LIFE: 8HR DAY/5HR NIGHT

AUTO SHUTOFF: YES

IP RATING: IP54

IR BRIGHTNESS: 4 LEVELS

SCREEN BRIGHTNESS: 3 LEVELS

DIMENSIONS: 5.51 x 6.30 x 2.60 IN

WEIGHT: 0.74LB

EXTERNAL MEMORY: UP TO 16 GB

PHOTO AND VIDEO: YES

ACCESSORIES: HEAD MOUNT, NECK STRAP, CHARGING CABLE, PROTECTIVE CASE



MODEL: XANB50 **SKU:** 200150



Ready to own the night? Check out these 3 - 6x digital zoom binoculars. You'll see everything around you with crisp, clean images in total darkness—up to 200 yards away. And you can view on the move with the help of the hands-free, detachable head mount. Share what's in view with your friends with full integrated photo and video. Plus, you can count on the Phantom 50 to deliver great performance whenever you go out thanks to the all-weather, dust-free protective casing.

SHADOW SERIES

XANB37 Night-Vision Binocular

MAGNIFICATION: 3 - 6X
NIGHT DISTANCE: 350YD
DAY DISTANCE: 550YD
FIELD OF VIEW: 60ft @ 100YD
OBJECTIVE LENS: 20 MM
DIGITAL DISPLAY: LCD
IR OUTPUT: 850NM
POWER SUPPLY: AA BATTERIES
BATTERY LIFE: 10HR DAY/6HR NIGHT
AUTO SHUTOFF: YES
IP RATING: IP54
IR BRIGHTNESS: 4 LEVELS
SCREEN BRIGHTNESS: 3 LEVELS
DIMENSIONS: 7.75 x 6.30 x 2.75 IN
WEIGHT: 1.05LB
EXTERNAL MEMORY: UP TO 32 GB
PHOTO AND VIDEO: YES
TRIPOD MOUNT: YES



MODEL: XANB37 **SKU:** 200137



These 3 - 6x night vision binoculars deliver a lot of tech and performance—and they do it for a price that makes sense. You'll see everything the night has in store with clean, crisp images up to 350 yards away with four levels of brightness. That makes them ideal for nighttime scouting, hunting and recovering game. And you'll see up to 550 yards in daylight. Want to share your adventure? Easy! There's integrated photo and video.

SHADOW SERIES

XANB22 Night-Vision Binocular

MAGNIFICATION: 3 - 6X

NIGHT DISTANCE: 175YD

DAY DISTANCE: 450YD

FIELD OF VIEW: 60ft @ 100YD

OBJECTIVE LENS: 20 MM

DIGITAL DISPLAY: LCD

IR OUTPUT: 850NM

POWER SUPPLY: AA BATTERIES

BATTERY LIFE: 10HR DAY/6HR NIGHT

AUTO SHUTOFF: YES

IP RATING: IP54

IR BRIGHTNESS: 4 LEVELS

SCREEN BRIGHTNESS: 3 LEVELS

DIMENSIONS: 7.75 x 6.30 x 2.75 IN

WEIGHT: 1.05LB

PHOTO AND VIDEO: NO

TRIPOD MOUNT: YES

ACCESSORIES: NECK STRAP, PROTECTIVE CASE, 8 AA BATTERIES



MODEL: XANB22 **SKU:** 200122



Looking for a high-performing bino at a low-impact price? Your search is over. With 3 – 6x magnification, you'll see up to 175 yards in complete darkness with four brightness levels and enviable battery performance. And they double as great, full-color daytime binoculars, too, with an effective range of 450 yards. Plus, no matter what conditions you're out in the Shadow 22 waterproof, dust-proof casing outperforms Mother Nature.

SHADOW SERIES

MNV100 Night-Vision Miniviewer

MAGNIFICATION: 2 - 8X

NIGHT DISTANCE: 325YD

DAY DISTANCE: 600YD

DIGITAL DISPLAY: 2.4" TFT LCD

IR OUTPUT: 850NM

POWER SUPPLY: BUILT-IN RECHARGEABLE BATTERY

BATTERY LIFE: 9HR DAY/5HR NIGHT

AUTO SHUTOFF: YES

IR BRIGHTNESS: 7 LEVELS

SCREEN BRIGHTNESS: 5 LEVELS

DIMENSIONS: 4.25 x 3.25 x 1.875 IN

WEIGHT: 0.3LB

EXTERNAL MEMORY: UP TO 32 GB

TRIPOD MOUNT: YES

ACCESSORIES: SOFT SLEEVE, LANYARD, CHARGING CABLE,



MODEL: MNV100 **SKU:** 200100



This IR Mini Viewer is a pocket-sized night vision viewer boasting an incredible 325 yard viewing distance in total darkness. With up to 8x digital zoom and 7 IR brightness settings, it's the ideal IR viewer whether you're in the hunting blind, the camp site, or the backyard. Photo and video are both supported and can be taken with ease.

FUSION SERIES

XANR100 Night-Vision Rangefinder

MAGNIFICATION: 3 - 6X

NIGHT DISTANCE: 150YD

DAY DISTANCE: 400YD

FIELD OF VIEW: 60ft @ 100YD

DIGITAL DISPLAY: 1.5" LCD

IR OUTPUT: 850NM

POWER SUPPLY: AA BATTERIES

BATTERY LIFE: 9HR DAY/4HR NIGHT

AUTO SHUTOFF: YES

IP RATING: IP54

IR BRIGHTNESS: 4 LEVELS

SCREEN BRIGHTNESS: 3 LEVELS

DIMENSIONS: 5.2 x 2.2 x 3.5 IN

WEIGHT: 0.5LB

TRIPOD MOUNT: YES

ACCESSORIES: PROTECTIVE CASE, LANYARD



MODEL: XANR100 **SKU:** 201100



Want dead-on accurate distances in total darkness? This is the one. With a 6x zoom you'll zero in on your nighttime target easily and clearly up to 150 yards away. Plus, there's four brightness settings to customize to your preference. And it's a great addition to your daytime hunts, too with an effective distance of 400 yards.

MERIDIAN SERIES

XANF100 Night-Vision Flashlight

NIGHT DISTANCE: 150YD

BEAM ADJUSTMENT: YES

IR OUTPUT: 940NM

POWER SUPPLY: 18650 LITHIUM-ION BATTERY

BATTERY LIFE: 4HR

MOUNT: PICATINNY

ACCESSORIES: BATTERY CHARGER, 18650 LITHIUM-ION BATTERY,
LANYARD, PICATINNY MOUNT



MODEL: XANF100 **SKU:** 202100



Here's a top-tier, high-powered infrared (IR) flashlight that will elevate the capabilities of your night vision optics. Turn it on, and its beam is invisible. But when you look through your optic, you see its effectiveness. Its powerful, unseen illumination extends the detection range of any night vision optic, revealing more detail in total darkness. Plus, with its picatinny mount, it easily integrates with an array of firearms and optics, making it a valuable addition to your night hunt setup. Don't think of this remarkable IR flashlight as an accessory; it's an upgrade for any night vision optic to help you own the night.

CONTACT US



If you would like more information about any of our Thermal or Night Vision products, please reach out to us using the following contact methods:

Phone: [833.993.2383](tel:833.993.2383) Email: support@xvisionoptics.com Socials: [@xvisionoptics](https://www.instagram.com/xvisionoptics)



DISCOVER THE UNSEEN.

XVISIONOPTICS.COM