

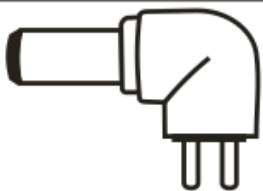
# ACD-477

## Features

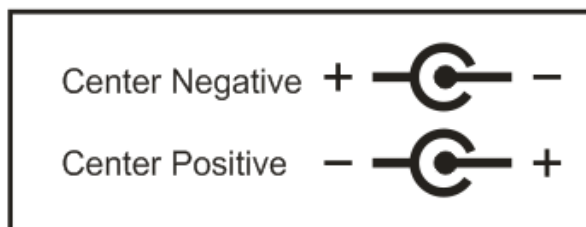
- Worldwide Input: AC 100-240v, 50/60Hz, adjusting automatically
- Regulated Output: DC 3-4.5-6-7.5-9-12V, 1200mA max
- High Efficiency: More than 80%
- Six Adaptor Plugs: For use with most small home electronic devices
- Short Circuit Protection (SCP): Self-protection against short circuit
- Innovative Design on Voltage Button Selector
- LED Power Indicator
- Compact in size, Light in weight, convenient to use, and easy to carry



Regulated DC Output: **3V** **4.5V** **6V** **7.5V** **9V** **12V**

	0.75 x 2.35mm	2.10 x 5.5mm
	1.70 x 4.0mm	1.50 x 5.0mm
	1.35 x 3.5mm	2.50 x 5.5mm

(Fig 1)



(Fig 2)

## Instructions

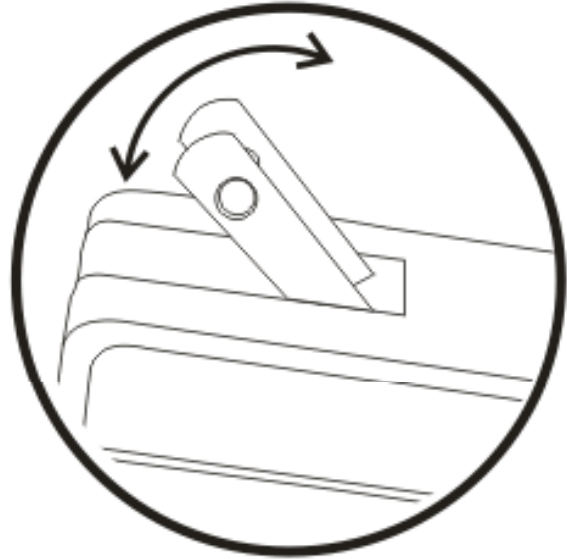
- Check the needed voltage on your electronic device and set the selector switch to the proper voltage.

- Six adaptor plugs are supplied, choose the one that best fits the external power jack.

- Check instructions and rating of the device and determine the polarity before inserting the

chosen adaptor plug into the external power jack. See Fig.2 for common symbols for tip polarity.

- Plug the adaptor into a standard electric wall outlet and operate your device as usual.



## **CAUTION**

- It is normal for this unit to generate some heat when working at its maximum capacity for an extended period of time.

- Carefully check and set the DC voltage on the unit. Your device may not work properly if improper voltage is chosen.

- Do Not set the polarity in reverse. Reversed polarity may cause permanent damage to the device.

- Do Not change output voltage when the unit is working to prevent possible damage to the device.

- Disconnect this device IMMEDIATELY from power source to prevent any possible damage when the device does not operate or when the LED is turned out by its SCP.

- Do not open, alter, and or modify this unit.



Conforms to ANSI/UL  
STD 60950-1  
Certified to CAN/CSA  
STD C22.2  
No 60950-1

## ACD-477 Universal Power Adaptor

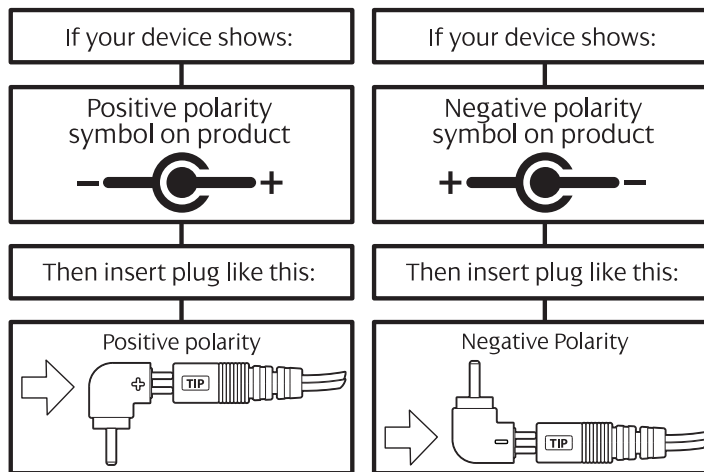
### Connection Procedures

Thank you for purchasing the ACD-477 Universal Power Adaptor by Hosa Technology.

This adaptor is designed to supply power to most small electronic devices. To ensure proper configuration of the adaptor for your device, please follow these instructions carefully:

### Connection Procedure

1. Determine the **voltage** required to power your device and select the same voltage on the adaptor (e.g. 3 V, 4.5 V, etc.)
2. Locate the DC input on the device (sometimes labeled DC IN) and select the plug that best fits the jack
3. Determine the **polarity** required to power the device (either positive or negative, marked on the device) and insert the plug into the cable receptacle as follows:



4. Connect the adaptor to line power and operate the device according to the manufacturer's instructions

### Precautions

- ! Take care to select the proper polarity when inserting the plug into the cable receptacle; failure to do so may damage the device
- ! Unplug the adaptor before selecting a new DC output voltage; failure to do so may damage the device
- ! The adaptor emits heat when operating at its maximum capacity for an extended period of time; handle with care when hot
- ! Disconnect the device immediately when the SCP deactivates the adaptor (the LED dims) to prevent damage to the device

### Warranty

This product is warranted by Hosa Technology, Inc. to be free of defects in materials and workmanship for one year. Please visit [www.hosatech.com](http://www.hosatech.com) for limitations.