



## 2. BUCOLIC WAY THROUGH THE MOUNTAIN

Can you perceive something strange in this old painting by Swiss artist Matthäus Merian (1593–1650)?

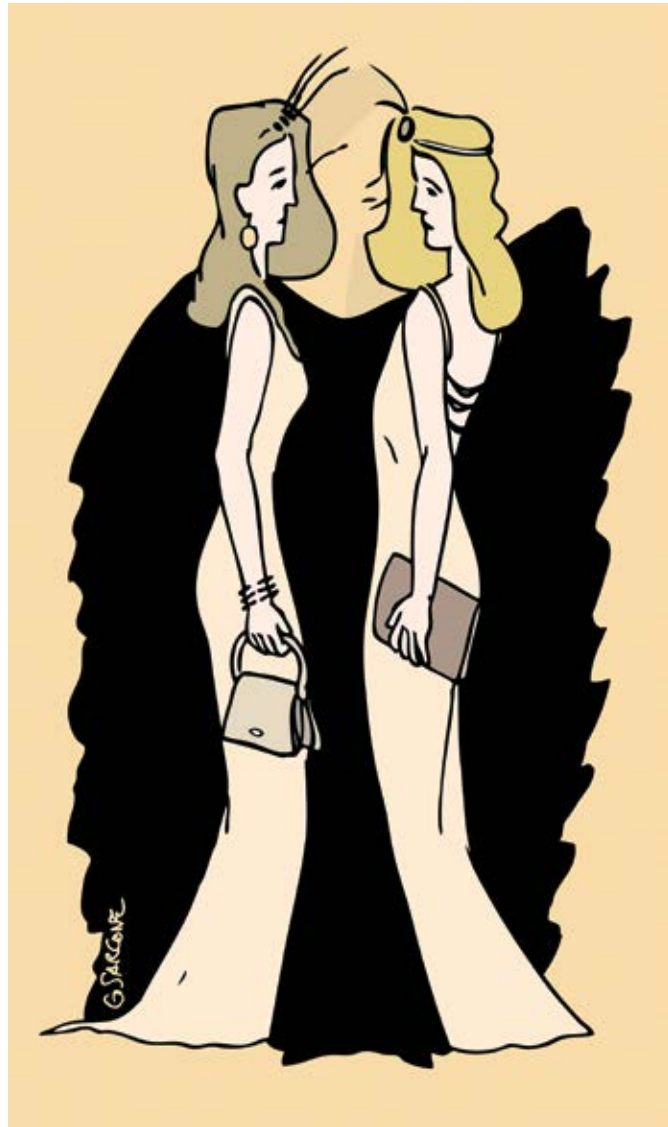
Answer: In this allegoric painting called "Mysterium Magnum" (Great Mystery) the mountain looks like an evil character (a giant, a bird?) laying an egg, and whose hat is a house on fire.



## 7. THE CUCKOLD AND THE KEYS OF HAPPINESS

Life is like a *commedia dell'arte*... In this suggestive picture by the Hungarian artist István Orosz is hidden the destination of every human being. Can you find it?

Answer: Death is the destination of our illusory life and, in effect, you can perceive a skull in the picture if you look at it from a distance.



### 10. THREE GRACES?

You can see two women, but where is the lady of the night?

Answer: Standing between the two facing ladies, you can make out a third woman wearing a black dress.