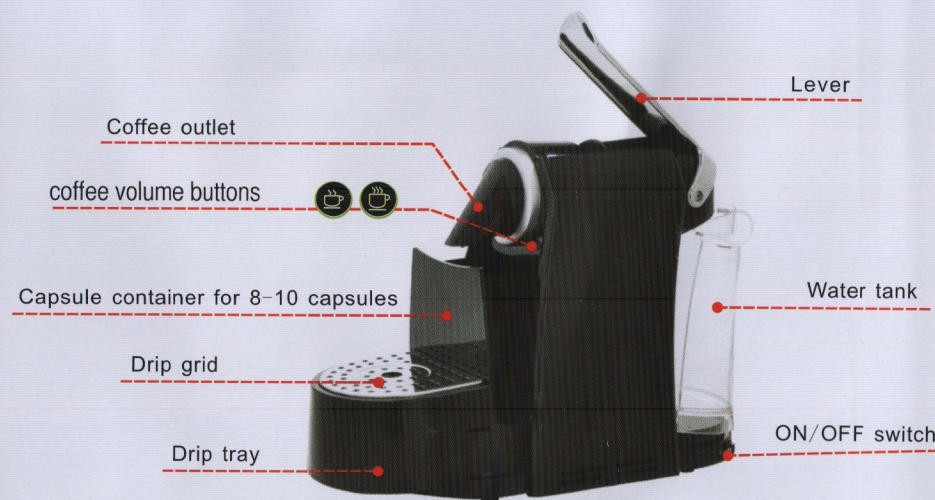


mycoffeemachine

Instruction Manual

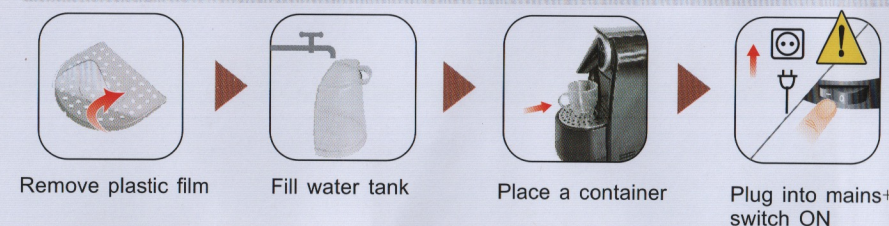


! Please read this Instruction Manual and the safety instructions before operating the appliance!

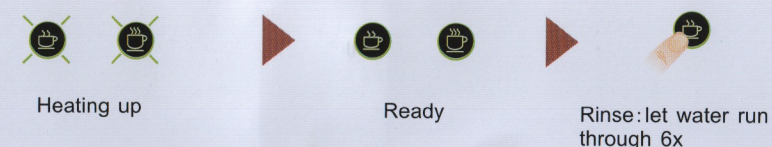


- Flashing slow (1*time/sec):preheating
- Flashing very slow: (5*sec/time):Power save mode
- Bright:ready
- Flashing (2*time/sec):emptying the system
- Flashing fast(3*time/sec):boiler too hot ,switch OFF to rest

1 First use or after a longer period of non-use



! Hot water is NOT to be used in the water tank

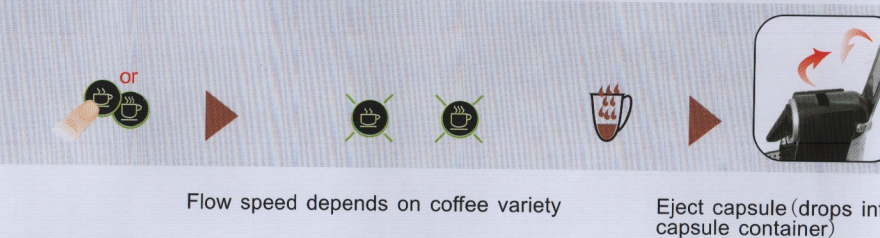
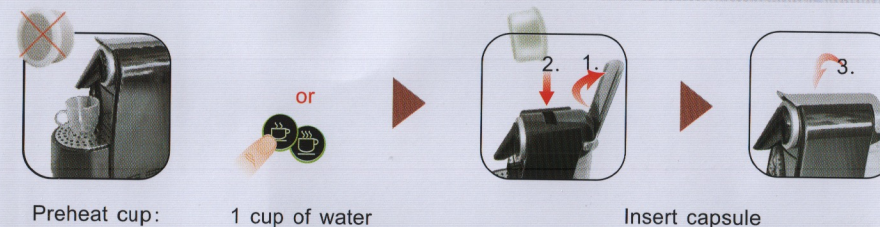


2 Daily : before the 1st coffee

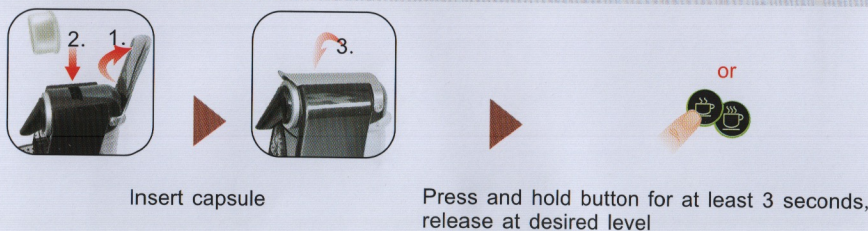


3 Espresso Cappuccino

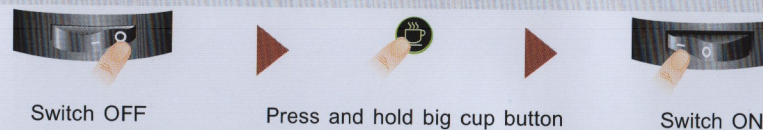
Preparation



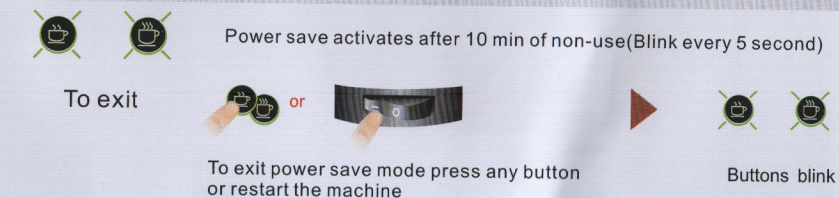
Programming the fill up level



Resetting the programmed large and small coffee flows to factory settings



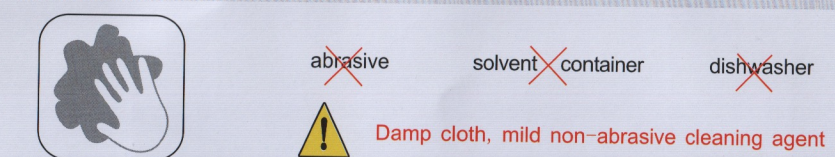
4 Power save mode



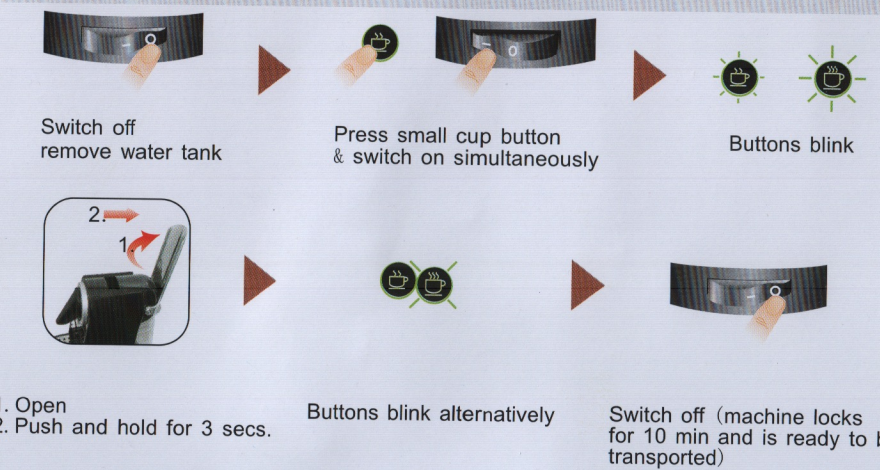
5 Daily : After the last coffee



6 Clean : When necessary



7 Empty system : After long period of non-use, for frost protection and after repair.





8 Descaling

Carefully read safety instructions on descaler packet. Descaler is aggressive to surface of casing. Do not use vinegar!

Water hardness		Descal after
fH	dH	
36	20	300
18	10	600
0	0	1200

Preparation



a   

Remove capsule Empty capsule container+drip tray Rinse machine, see 1

If leakage see: 9e

b  

Fill with descaler and 0.5L water Place a receptacle

c  

Press both buttons simultaneously for 3 seconds Let descaling solution run through twice Refill water tank once more with descaling solution and repeat step

Start **Stop**



90 sec



Avoid using vinegar as it can damage your machine.


d   


Empty, rinse and fill water tank with fresh water Rinse machine, see 1 Exit: press both buttons simultaneously for 3 secs

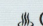
9 Troubleshooting



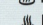

a No light  The machine has switched off automatically; press ON/OFF button
 Check the mains: plug, voltage, fuse.


b No coffee, no water  Check the water tank if empty, full with potable water. Descal it if necessary
 Lift the lever. Press one coffee button and wait until water comes out.

c Coffee is not hot enough  Preheat cup. Descal the machine if necessary.


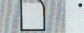
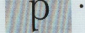



d The lever cannot be closed completely  Empty the capsule container/Check that there is not a capsule blocked inside the machine

e Leakage or unusual coffee flow  Check that the water tank is in position

f Lights flash irregularly  Check the water tank if empty, full with potable water.
 Replace a new capsule
 Exit descaling procedure (see paragraph on descaling).
 Power save activates after 10 min of non-use

g Water comes out, No coffee  Replace a new capsule

Specifications


	100V-127V 50-60Hz 900W - 1200W		1.06qt
	max. 19 bar		41F - 113F
	~6lb 9oz		6' 10' 12'


Safety precautions


Keep this instruction manual

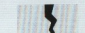
This appliance may become a safety hazard if these instructions and safety precautions are ignored


SOS Emergency: Immediately remove plug from power socket.

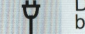
 This product has been designed for domestic use only. Any commercial use, inappropriate use or failure to comply with the instructions, the manufacturer accepts no responsibility and the guarantee will not apply. Remove plug from socket if not in use for long periods holiday etc.


 Check that the voltage quoted on the rating plate is the same as your voltage. Connect the appliance only to power sockets with protective earth. The use of incorrect connection voids warranty.

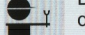
 Before cleaning, unplug the appliance and let it cool down. Never clean wet or immerse plug, cord or appliance in any fluid.


 Do not use the machine if it is not operating perfectly or if there is evidence of damage. In such cases inform the seller.


 Always close lever, never lift during operation. Do not put fingers into capsule compartment and capsule shaft, danger of injury. Do not use appliance without drip tray and drip grid. Keep appliance/cord out of reach of children. Hot water is forbidden filling in the water tank.

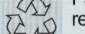
 Do not place power cord by hot parts or sharp edges, etc. Never touch cable with wet hands. Do not unplug by pulling the cord. In case of damage, do not use the appliance. In order to avoid danger have repairs and replacement of power cord only by the seller.


 Place on a flat, stable heat-resistant work surface away from water splashes and any heat sources.

 Do not open appliance and do not put anything into openings. All operations other than normal use, cleaning and care must be performed by the seller.

 This appliance can be used by children aged from 8 years and above if they have been given supervision or instruction concerning use of the appliance in a safe way and if they understand the hazards involved. Cleaning and user maintenance shall not be made by children unless they are older than 8 and supervised. Keep the appliance and its cord out of reach of children aged less than 8 years.

 Descaling:
8c) Do not lift lever during descaling process.
8d) Rinse the water tank and clean the machine to avoid any residual descaling agent.

 Packaging is made of recyclable materials

 Environment protection first! Your appliance contains valuable materials which can be recovered or recycled. Leave it at a collection point.

If the power cord or the plug is damaged, it must be replaced by the manufacturer or qualified person in order to avoid an electrical hazard.