

FUEL TANK COMPONENT LIST	
A	PRIMARY EMERGENCY VENT
B	SECONDARY EMERGENCY VENT
C	LOW FUEL SWITCH
D	FUEL GAUGE
E	NORMAL VENT
F	ENGINE SUPPLY
G	ENGINE RETURN
H	RUPTURE BASIN SWITCH
J	FUEL FILL
K	SPARE

NOTES:

- TANKS ARE ULI42 LISTED. SECONDARY CONTAINMENT FUEL TANK. REFER TO TANK LABELS AND LOCAL CODE TO DETERMINE VENTING REQUIREMENTS FOR BOTH COMPARTMENTS.
- SUBBASE FUEL TANK MOUNTING. EXCESSIVE TWISTING OF THE FUEL TANK, MAY RESULT IN STRUCTURAL FAILURE OF THE TANK. TO ENSURE THE INSTALLATION DOES NOT EXCESSIVELY TWIST THE FUEL TANK, THE FOLLOWING PROCEDURE MUST BE OBSERVED:
 - REFER TO APPLICATION MANUAL T030 FOR GENERAL SET MOUNTING GUIDELINES.
 - AFTER PLACING SET ON FOUNDATION, VERIFY ALL FOUR MOUNTING PADS CONTACT FOUNDATION.
 - THERE ARE SHIMS ATTACHED TO EACH FUEL TANK. THESE ARE INTENDED TO FILL ANY GAP BETWEEN THE MOUNTING PADS AND FOUNDATION.
 - INSERT THE MAXIMUM HEIGHT STACK OF SHIMS THAT WILL SLIDE INTO THE GAP.
 - TIGHTEN TANK HOLD DOWN MOUNTING FASTENERS.
- FOR IBC SEISMIC CERTIFIED INSTALLATIONS, SEE GENSET IBC SEISMIC INSTALLATION REQUIREMENTS DRAWING.
- FUEL TANK HAS A FLANGE THICKNESS OF UP TO 10 mm [0.394 in], ALLOW EXTRA LENGTH ON HARDWARE FOR UNEVENNESS OF MOUNTING SURFACE. RISER FEATURE WILL ADD ADDITIONAL 51 mm [2 in].
- LIFTING BASE OF FUEL TANK PERIMETER IS SHOWN. FOUNDATION SHOULD BE EXTENDED BEYOND THIS PERIMETER. SEE T-030 APPLICATION MANUAL FOR FURTHER INSTRUCTIONS
- REMOVABLE STUB-UP ACCESS PANEL
- MAINTAIN MIN 51 mm [2 in] CLEARANCE ABOVE E-VENT.
- WEIGHT AND CENTER OF GRAVITY INFORMATION IS ESTIMATED AND CHANGES WITH TANK FEATURE INSTALLATION.
- DRY WEIGHT REFERS TO TANK WITH NO LIQUID. WET WEIGHT REFERS TO TANK FILLED WITH DIESEL TO MAXIMUM USABLE VOLUME.
- NOMINAL TANK VOLUME REFERS TO OVERALL TANK VOLUME. USABLE TANK VOLUME REFERS TO MAXIMUM FILL VOLUME OF TANK
- CENTER OF GRAVITY DIMENSIONS REFER TO A DRY TANK.
- HEIGHT FROM TANK SURFACE TO TOP OF RISER IS 3.5 MM [0.14]
- HEIGHT FROM TANK SURFACE TO TOP OF RISER IS 9.5 MM [0.37]
- HEIGHT FROM TANK SURFACE TO TOP OF RISER IS 21.7 MM [0.85]

MODEL/PLATFORM: ARROW		THIS PART IS SIMILAR TO:	
UNLESS OTHERWISE SPECIFIED THE FOLLOWING SHALL APPLY		ANG. TOL.: ± 1°	
DIMENSIONAL TOLERANCES:		.X ± 0.8	.XX ± 0.38
Cummins Inc.			
DIMENSIONS ARE IN: MILLIMETERS [] ARE IN: -	SIZE: D	SCALE: 1/8	
DIMENSIONING AND TOLERANCING PER: ASME Y14.5-2009			CAD SYSTEM PTC® Creo® Parametric

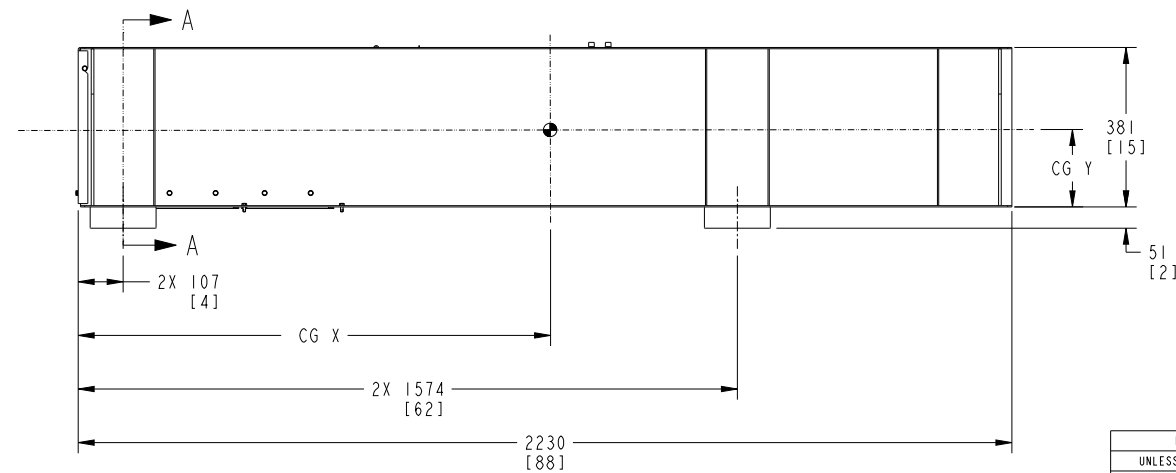
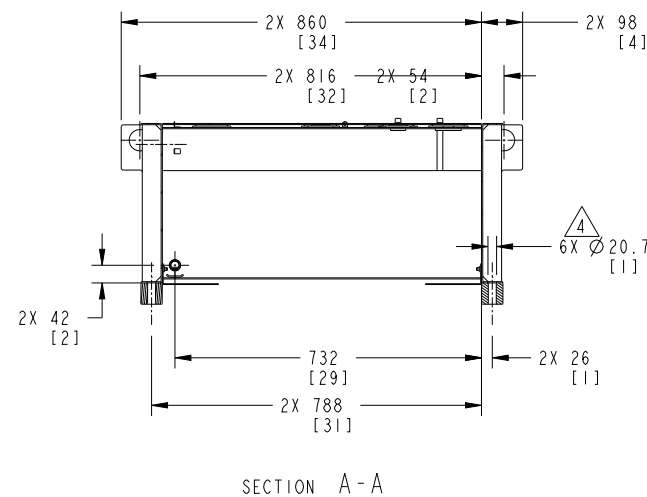
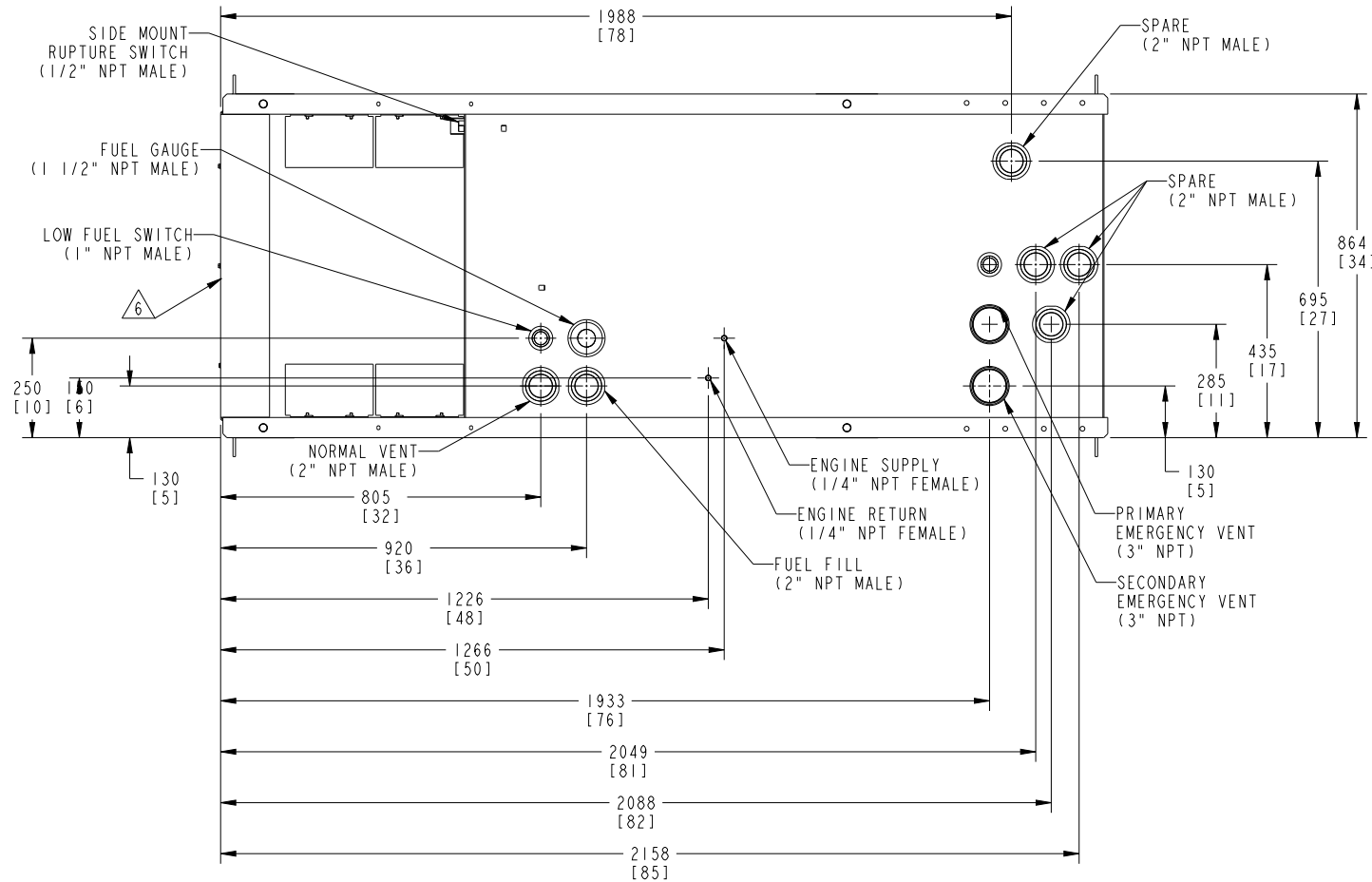
Cummins Data Classification:
Cummins Confidential

This document (and the information shown thereon) is **Confidential and Proprietary** and shall not be disclosed to others in hard copy or electronic form, reproduced by any means, or used for any purpose without written consent of Cummins Inc.

Part Number: **A047D046** Part Revision: **C**
Part Name: **OUTLINE,TANK**
Drawing Category: **Detail** State: **Released** Sheet 1 of 7

73 GALLON FUEL TANK (A045T330)

TABULATION							
WEIGHT KG [LBS]		TANK VOLUME LITERS [GAL]		TANK HEIGHT MM [IN]		CENTER OF GRAVITY MM [IN]	
DRY	WET	NOMINAL	USEABLE	EXTERNAL	INTERNAL	CG X	CG Y
182 [40]	412 [908]	318 [84]	276 [73]	381 [15]	337.8 [13.3]	1321 [52]	178 [7]



MODEL/PLATFORM: ARROW	THIS PART IS SIMILAR TO:	
UNLESS OTHERWISE SPECIFIED THE FOLLOWING SHALL APPLY	ANG. TOL.: ± 1°	
DIMENSIONAL TOLERANCES:	X ± 1	.X ± 0.8 .XX ± 0.38
Cummins Inc.		
DIMENSIONS ARE IN: MILLIMETERS [] ARE IN: -	SIZE: D	SCALE: 1/8
DIMENSIONING AND TOLERANCING PER: ASME Y14.5-2009		CAD SYSTEM PTC® Creo® Parametric

Document Generated: 11APR2022 21:32 GMT

8

7

6

5

4

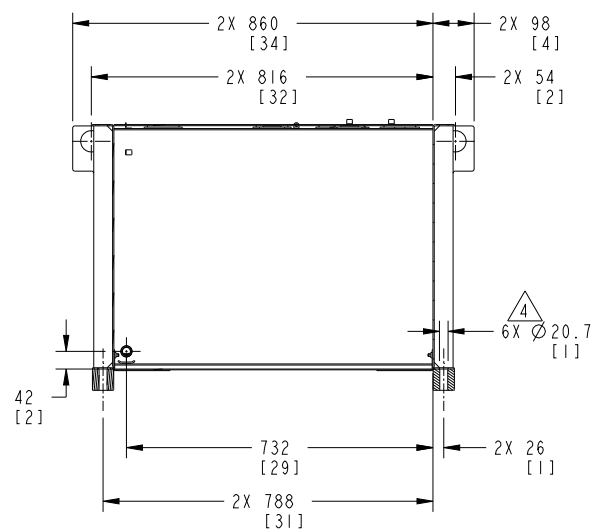
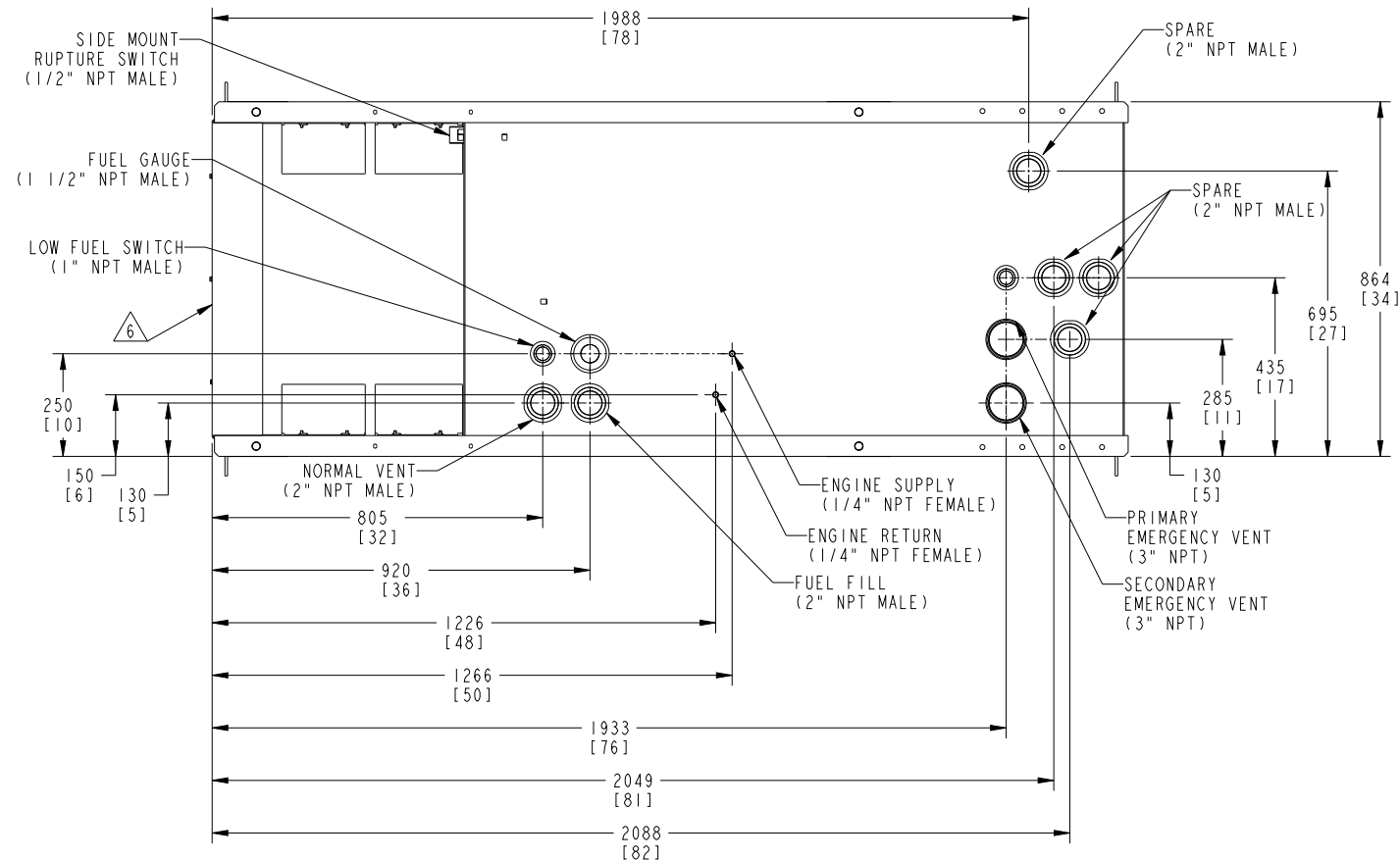
3

2

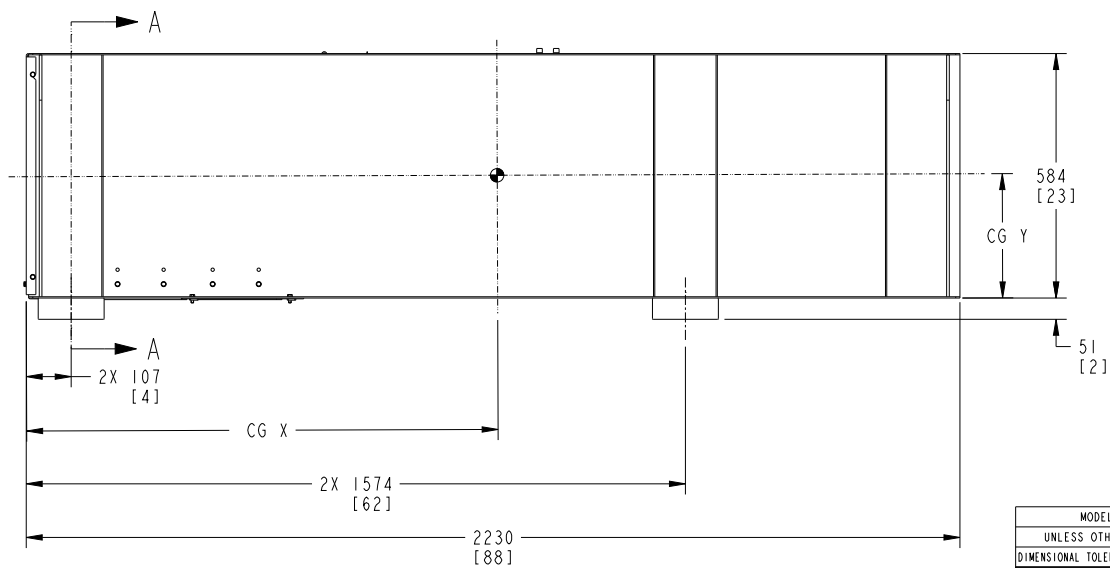
1

132 GALLON FUEL TANK (A045T332)

TABULATION							
WEIGHT KG [LBS]		TANK VOLUME LITERS [GAL]		TANK HEIGHT MM [IN]		CENTER OF GRAVITY MM [IN]	
DRY	WET	NOMINAL	USEABLE	EXTERNAL	INTERNAL	CG X	CG Y
266 [587]	682 [1504]	515 [136]	500 [132]	584 [23]	529.6 [208.5]	1321 [52]	279 [11]

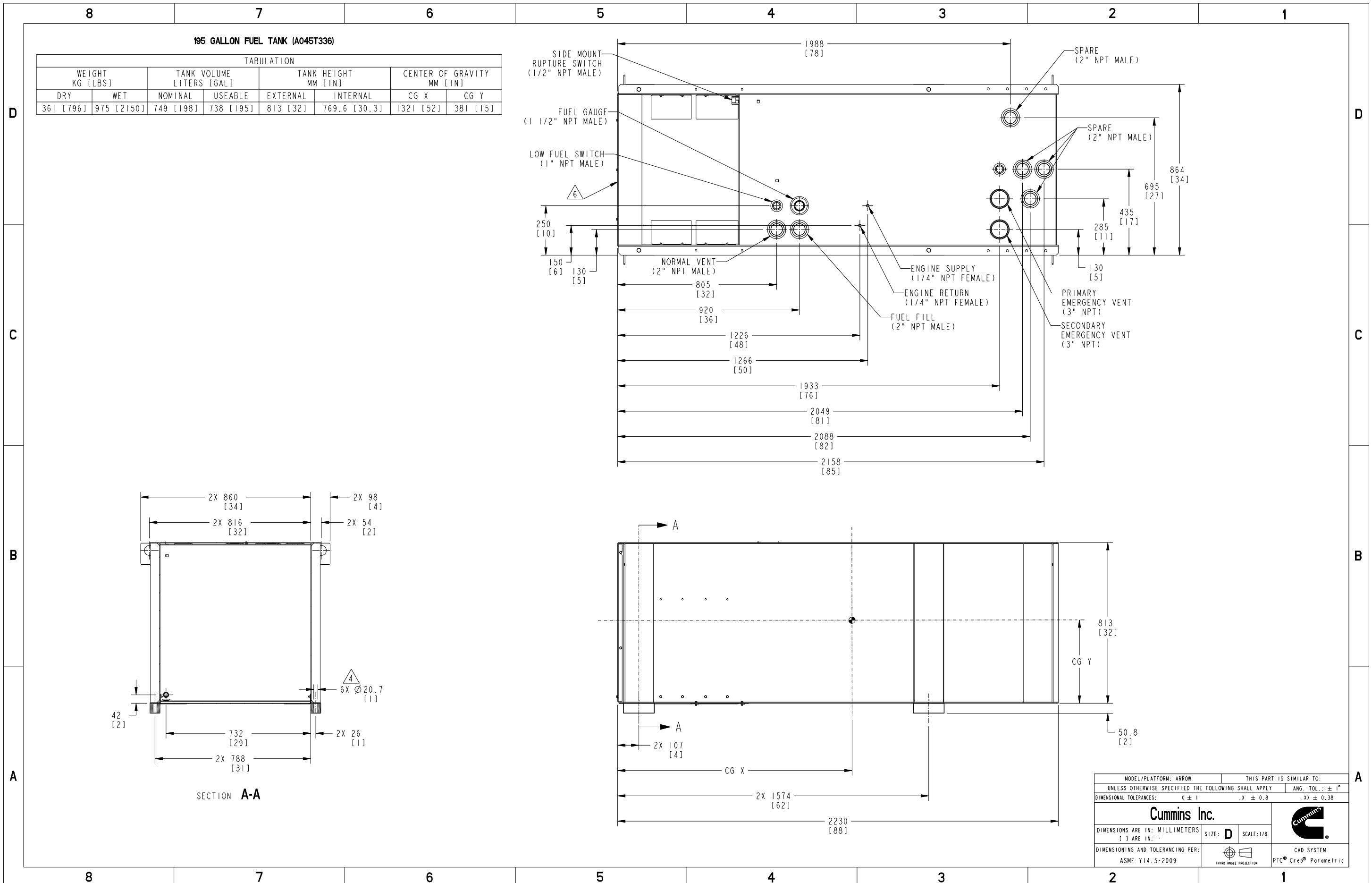


SECTION A-A



MODEL/PLATFORM: ARROW	THIS PART IS SIMILAR TO:	
UNLESS OTHERWISE SPECIFIED THE FOLLOWING SHALL APPLY		ANG. TOL.: ± 1°
DIMENSIONAL TOLERANCES:	X ± 1	.X ± 0.8 .XX ± 0.38
Cummins Inc.		
DIMENSIONS ARE IN: MILLIMETERS [] ARE IN: -	SIZE: D	SCALE: 1/8
DIMENSIONING AND TOLERANCING PER: ASME Y14.5-2009		CAD SYSTEM PTC® Creo® Parametric

Document Generated: 11APR2022 21:32 GMT



Document Generated: 11APR2022 21:32 GMT

Cummins Data Classification:
Cummins Confidential

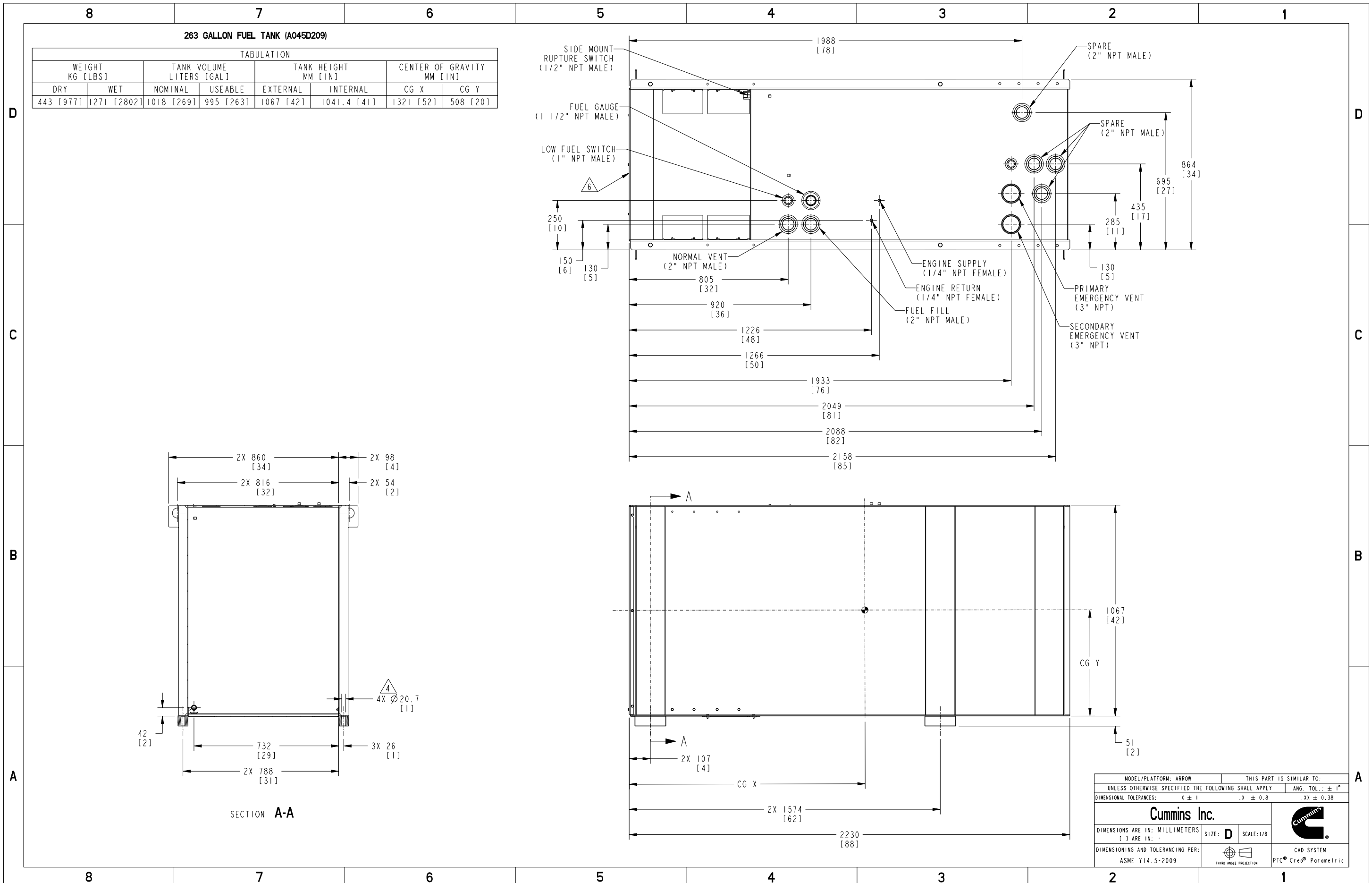
This document (and the information shown thereon) is **Confidential and Proprietary** and shall not be disclosed to others in hard copy or electronic form, reproduced by any means, or used for any purpose without written consent of Cummins Inc.

Part Number: **A047D046** Part Revision: **C**

Part Name: **OUTLINE,TANK**

Drawing Category: **Detail** State: **Released** Sheet 4 of 7



MODEL/PLATFORM: ARROW	THIS PART IS SIMILAR TO:	
UNLESS OTHERWISE SPECIFIED THE FOLLOWING SHALL APPLY		
DIMENSIONAL TOLERANCES:	X ± 1	.XX ± 0.38
Cummins Inc.		
DIMENSIONS ARE IN: MILLIMETERS	SIZE: D	SCALE: 1/8
[] ARE IN: -	CAD SYSTEM	
DIMENSIONING AND TOLERANCING PER: ASME Y14.5-2009	THIRD ANGLE PROJECTION	PTC® Creo® Parametric



MODEL/PLATFORM: ARROW	THIS PART IS SIMILAR TO:	
UNLESS OTHERWISE SPECIFIED THE FOLLOWING SHALL APPLY		
DIMENSIONAL TOLERANCES:	X ± 1	.XX ± 0.38
Cummins Inc.		
DIMENSIONS ARE IN: MILLIMETERS	SIZE: D	SCALE: 1/8
[] ARE IN: -	CAD SYSTEM	
DIMENSIONING AND TOLERANCING PER: ASME Y14.5-2009	THIRD ANGLE PROJECTION	PTC® Creo® Parametric

Document Generated: 11APR2022 21:32 GMT

8	7	6	5	4	3	2	1																																																																																																																																																																																																																																																																																																																																																																																																																																																																
D	<table border="1" style="width:100%; border-collapse: collapse;"> <thead> <tr> <th colspan="4">A045T330 TANK DEPTH CHART</th> <th colspan="4">A045T332 TANK DEPTH CHART</th> <th colspan="4">A045T336 TANK DEPTH CHART</th> <th colspan="4">A045D209 TANK DEPTH CHART</th> </tr> <tr> <th>HEIGHT (IN)</th> <th>HEIGHT (MM)</th> <th>USABLE VOLUME (GAL.)</th> <th>TOTAL VOLUME (GAL.)</th> <th>HEIGHT (IN)</th> <th>HEIGHT (MM)</th> <th>USABLE VOLUME (GAL.)</th> <th>TOTAL VOLUME (GAL.)</th> <th>HEIGHT (IN)</th> <th>HEIGHT (MM)</th> <th>USABLE VOLUME (GAL.)</th> <th>TOTAL VOLUME (GAL.)</th> <th>HEIGHT (IN)</th> <th>HEIGHT (MM)</th> <th>USABLE VOLUME (GAL.)</th> <th>TOTAL VOLUME (GAL.)</th> </tr> </thead> <tbody> <tr><td>0.5</td><td>12.7</td><td>0</td><td>3</td><td>0.5</td><td>12.7</td><td>0</td><td>3</td><td>0.5</td><td>12.7</td><td>0</td><td>3</td><td>0.5</td><td>12.7</td><td>0</td><td>3</td></tr> <tr><td>2</td><td>50.8</td><td>9</td><td>13</td><td>2</td><td>50.8</td><td>10</td><td>13</td><td>2</td><td>50.8</td><td>10</td><td>13</td><td>2</td><td>50.8</td><td>10</td><td>13</td></tr> <tr><td>4</td><td>101.6</td><td>22</td><td>25</td><td>4</td><td>101.6</td><td>23</td><td>26</td><td>4</td><td>101.6</td><td>23</td><td>26</td><td>4</td><td>101.6</td><td>23</td><td>26</td></tr> <tr><td>6</td><td>152.4</td><td>35</td><td>38</td><td>6</td><td>152.4</td><td>36</td><td>39</td><td>6</td><td>152.4</td><td>36</td><td>39</td><td>6</td><td>152.4</td><td>36</td><td>39</td></tr> <tr><td>8</td><td>203.2</td><td>47</td><td>50</td><td>8</td><td>203.2</td><td>49</td><td>52</td><td>8</td><td>203.2</td><td>49</td><td>52</td><td>8</td><td>203.2</td><td>49</td><td>52</td></tr> <tr><td>10</td><td>254</td><td>60</td><td>63</td><td>10</td><td>254</td><td>62</td><td>65</td><td>10</td><td>254</td><td>62</td><td>65</td><td>10</td><td>254</td><td>62</td><td>65</td></tr> <tr><td>12</td><td>304.8</td><td>73</td><td>76</td><td>12</td><td>304.8</td><td>75</td><td>79</td><td>12</td><td>304.8</td><td>75</td><td>79</td><td>12</td><td>304.8</td><td>75</td><td>79</td></tr> <tr><td>13.3</td><td>337.8</td><td></td><td>84</td><td>13</td><td>330.2</td><td>82</td><td>85</td><td>13</td><td>330.2</td><td>82</td><td>85</td><td>14</td><td>355.6</td><td>88</td><td>92</td></tr> <tr><td></td><td></td><td></td><td></td><td>14</td><td>355.6</td><td>88</td><td>92</td><td>14</td><td>355.6</td><td>88</td><td>92</td><td>16</td><td>406.4</td><td>102</td><td>105</td></tr> <tr><td></td><td></td><td></td><td></td><td>15</td><td>381</td><td>95</td><td>98</td><td>15</td><td>381</td><td>95</td><td>98</td><td>18</td><td>457.2</td><td>115</td><td>118</td></tr> <tr><td></td><td></td><td></td><td></td><td>16</td><td>406.4</td><td>101</td><td>105</td><td>16</td><td>406.4</td><td>101</td><td>105</td><td>20</td><td>508</td><td>128</td><td>131</td></tr> <tr><td></td><td></td><td></td><td></td><td>17</td><td>431.8</td><td>108</td><td>111</td><td>17</td><td>431.8</td><td>108</td><td>111</td><td>21</td><td>533.4</td><td>134</td><td>137</td></tr> <tr><td></td><td></td><td></td><td></td><td>18</td><td>457.2</td><td>115</td><td>118</td><td>18</td><td>457.2</td><td>115</td><td>118</td><td>22</td><td>558.8</td><td>141</td><td>144</td></tr> <tr><td></td><td></td><td></td><td></td><td>19</td><td>482.6</td><td>121</td><td>124</td><td>19</td><td>482.6</td><td>121</td><td>124</td><td>23</td><td>584.2</td><td>147</td><td>151</td></tr> <tr><td></td><td></td><td></td><td></td><td>20.61</td><td>523.5</td><td>132</td><td>135</td><td>20</td><td>508</td><td>128</td><td>131</td><td>24</td><td>609.6</td><td>154</td><td>157</td></tr> <tr><td></td><td></td><td></td><td></td><td>20.85</td><td>529.6</td><td></td><td>136</td><td>21</td><td>533.4</td><td>134</td><td>137</td><td>25</td><td>635</td><td>160</td><td>164</td></tr> <tr><td></td><td></td><td></td><td></td><td></td><td></td><td></td><td></td><td>22</td><td>558.8</td><td>141</td><td>144</td><td>26</td><td>660.4</td><td>167</td><td>170</td></tr> <tr><td></td><td></td><td></td><td></td><td></td><td></td><td></td><td></td><td>23</td><td>584.2</td><td>147</td><td>151</td><td>27</td><td>685.8</td><td>173</td><td>177</td></tr> <tr><td></td><td></td><td></td><td></td><td></td><td></td><td></td><td></td><td>24</td><td>609.6</td><td>154</td><td>157</td><td>28</td><td>711.2</td><td>180</td><td>183</td></tr> <tr><td></td><td></td><td></td><td></td><td></td><td></td><td></td><td></td><td>25</td><td>635</td><td>160</td><td>164</td><td>29</td><td>736.6</td><td>187</td><td>190</td></tr> <tr><td></td><td></td><td></td><td></td><td></td><td></td><td></td><td></td><td>26</td><td>660.4</td><td>167</td><td>170</td><td>30.24</td><td>768.1</td><td>195</td><td>198</td></tr> <tr><td></td><td></td><td></td><td></td><td></td><td></td><td></td><td></td><td>27</td><td>685.8</td><td>173</td><td>177</td><td>30.3</td><td>769.6</td><td></td><td>198</td></tr> <tr><td></td><td></td><td></td><td></td><td></td><td></td><td></td><td></td><td>28</td><td>711.2</td><td>180</td><td>183</td><td></td><td></td><td></td><td></td></tr> <tr><td></td><td></td><td></td><td></td><td></td><td></td><td></td><td></td><td>29</td><td>736.6</td><td>187</td><td>190</td><td></td><td></td><td></td><td></td></tr> <tr><td></td><td></td><td></td><td></td><td></td><td></td><td></td><td></td><td>30.24</td><td>768.1</td><td>195</td><td>198</td><td></td><td></td><td></td><td></td></tr> <tr><td></td><td></td><td></td><td></td><td></td><td></td><td></td><td></td><td>30.3</td><td>769.6</td><td></td><td>198</td><td></td><td></td><td></td><td></td></tr> </tbody> </table>						A045T330 TANK DEPTH CHART				A045T332 TANK DEPTH CHART				A045T336 TANK DEPTH CHART				A045D209 TANK DEPTH CHART				HEIGHT (IN)	HEIGHT (MM)	USABLE VOLUME (GAL.)	TOTAL VOLUME (GAL.)	HEIGHT (IN)	HEIGHT (MM)	USABLE VOLUME (GAL.)	TOTAL VOLUME (GAL.)	HEIGHT (IN)	HEIGHT (MM)	USABLE VOLUME (GAL.)	TOTAL VOLUME (GAL.)	HEIGHT (IN)	HEIGHT (MM)	USABLE VOLUME (GAL.)	TOTAL VOLUME (GAL.)	0.5	12.7	0	3	0.5	12.7	0	3	0.5	12.7	0	3	0.5	12.7	0	3	2	50.8	9	13	2	50.8	10	13	2	50.8	10	13	2	50.8	10	13	4	101.6	22	25	4	101.6	23	26	4	101.6	23	26	4	101.6	23	26	6	152.4	35	38	6	152.4	36	39	6	152.4	36	39	6	152.4	36	39	8	203.2	47	50	8	203.2	49	52	8	203.2	49	52	8	203.2	49	52	10	254	60	63	10	254	62	65	10	254	62	65	10	254	62	65	12	304.8	73	76	12	304.8	75	79	12	304.8	75	79	12	304.8	75	79	13.3	337.8		84	13	330.2	82	85	13	330.2	82	85	14	355.6	88	92					14	355.6	88	92	14	355.6	88	92	16	406.4	102	105					15	381	95	98	15	381	95	98	18	457.2	115	118					16	406.4	101	105	16	406.4	101	105	20	508	128	131					17	431.8	108	111	17	431.8	108	111	21	533.4	134	137					18	457.2	115	118	18	457.2	115	118	22	558.8	141	144					19	482.6	121	124	19	482.6	121	124	23	584.2	147	151					20.61	523.5	132	135	20	508	128	131	24	609.6	154	157					20.85	529.6		136	21	533.4	134	137	25	635	160	164									22	558.8	141	144	26	660.4	167	170									23	584.2	147	151	27	685.8	173	177									24	609.6	154	157	28	711.2	180	183									25	635	160	164	29	736.6	187	190									26	660.4	167	170	30.24	768.1	195	198									27	685.8	173	177	30.3	769.6		198									28	711.2	180	183													29	736.6	187	190													30.24	768.1	195	198													30.3	769.6		198					D
A045T330 TANK DEPTH CHART				A045T332 TANK DEPTH CHART				A045T336 TANK DEPTH CHART				A045D209 TANK DEPTH CHART																																																																																																																																																																																																																																																																																																																																																																																																																																																											
HEIGHT (IN)	HEIGHT (MM)	USABLE VOLUME (GAL.)	TOTAL VOLUME (GAL.)	HEIGHT (IN)	HEIGHT (MM)	USABLE VOLUME (GAL.)	TOTAL VOLUME (GAL.)	HEIGHT (IN)	HEIGHT (MM)	USABLE VOLUME (GAL.)	TOTAL VOLUME (GAL.)	HEIGHT (IN)	HEIGHT (MM)	USABLE VOLUME (GAL.)	TOTAL VOLUME (GAL.)																																																																																																																																																																																																																																																																																																																																																																																																																																																								
0.5	12.7	0	3	0.5	12.7	0	3	0.5	12.7	0	3	0.5	12.7	0	3																																																																																																																																																																																																																																																																																																																																																																																																																																																								
2	50.8	9	13	2	50.8	10	13	2	50.8	10	13	2	50.8	10	13																																																																																																																																																																																																																																																																																																																																																																																																																																																								
4	101.6	22	25	4	101.6	23	26	4	101.6	23	26	4	101.6	23	26																																																																																																																																																																																																																																																																																																																																																																																																																																																								
6	152.4	35	38	6	152.4	36	39	6	152.4	36	39	6	152.4	36	39																																																																																																																																																																																																																																																																																																																																																																																																																																																								
8	203.2	47	50	8	203.2	49	52	8	203.2	49	52	8	203.2	49	52																																																																																																																																																																																																																																																																																																																																																																																																																																																								
10	254	60	63	10	254	62	65	10	254	62	65	10	254	62	65																																																																																																																																																																																																																																																																																																																																																																																																																																																								
12	304.8	73	76	12	304.8	75	79	12	304.8	75	79	12	304.8	75	79																																																																																																																																																																																																																																																																																																																																																																																																																																																								
13.3	337.8		84	13	330.2	82	85	13	330.2	82	85	14	355.6	88	92																																																																																																																																																																																																																																																																																																																																																																																																																																																								
				14	355.6	88	92	14	355.6	88	92	16	406.4	102	105																																																																																																																																																																																																																																																																																																																																																																																																																																																								
				15	381	95	98	15	381	95	98	18	457.2	115	118																																																																																																																																																																																																																																																																																																																																																																																																																																																								
				16	406.4	101	105	16	406.4	101	105	20	508	128	131																																																																																																																																																																																																																																																																																																																																																																																																																																																								
				17	431.8	108	111	17	431.8	108	111	21	533.4	134	137																																																																																																																																																																																																																																																																																																																																																																																																																																																								
				18	457.2	115	118	18	457.2	115	118	22	558.8	141	144																																																																																																																																																																																																																																																																																																																																																																																																																																																								
				19	482.6	121	124	19	482.6	121	124	23	584.2	147	151																																																																																																																																																																																																																																																																																																																																																																																																																																																								
				20.61	523.5	132	135	20	508	128	131	24	609.6	154	157																																																																																																																																																																																																																																																																																																																																																																																																																																																								
				20.85	529.6		136	21	533.4	134	137	25	635	160	164																																																																																																																																																																																																																																																																																																																																																																																																																																																								
								22	558.8	141	144	26	660.4	167	170																																																																																																																																																																																																																																																																																																																																																																																																																																																								
								23	584.2	147	151	27	685.8	173	177																																																																																																																																																																																																																																																																																																																																																																																																																																																								
								24	609.6	154	157	28	711.2	180	183																																																																																																																																																																																																																																																																																																																																																																																																																																																								
								25	635	160	164	29	736.6	187	190																																																																																																																																																																																																																																																																																																																																																																																																																																																								
								26	660.4	167	170	30.24	768.1	195	198																																																																																																																																																																																																																																																																																																																																																																																																																																																								
								27	685.8	173	177	30.3	769.6		198																																																																																																																																																																																																																																																																																																																																																																																																																																																								
								28	711.2	180	183																																																																																																																																																																																																																																																																																																																																																																																																																																																												
								29	736.6	187	190																																																																																																																																																																																																																																																																																																																																																																																																																																																												
								30.24	768.1	195	198																																																																																																																																																																																																																																																																																																																																																																																																																																																												
								30.3	769.6		198																																																																																																																																																																																																																																																																																																																																																																																																																																																												
C							C																																																																																																																																																																																																																																																																																																																																																																																																																																																																
B							B																																																																																																																																																																																																																																																																																																																																																																																																																																																																
A							A																																																																																																																																																																																																																																																																																																																																																																																																																																																																
8	7	6	5	4	3	2	1																																																																																																																																																																																																																																																																																																																																																																																																																																																																

MODEL/PLATFORM: ARROW		THIS PART IS SIMILAR TO:	
UNLESS OTHERWISE SPECIFIED THE FOLLOWING SHALL APPLY		ANG. TOL.: ± 1°	
DIMENSIONAL TOLERANCES:		X ± 1	.XX ± 0.38
Cummins Inc.			
DIMENSIONS ARE IN: MILLIMETERS	SIZE: D	SCALE: 1/8	
[] ARE IN: -			
DIMENSIONING AND TOLERANCING PER:			CAD SYSTEM
ASME Y14.5-2009			PTC® Creo® Parametric

Document Generated: 11APR2022 21:32 GMT

Cummins Data Classification:
Cummins Confidential

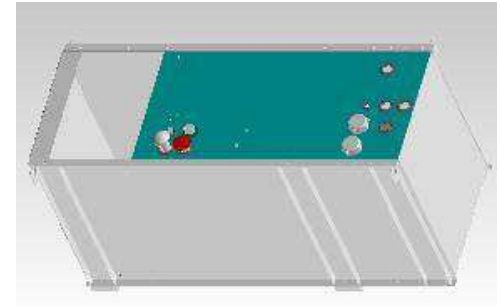
This document (and the information shown thereon) is **Confidential and Proprietary** and shall not be disclosed to others in hard copy or electronic form, reproduced by any means, or used for any purpose without written consent of Cummins Inc.

Part Number: **A047D046** Part Revision: **C**
Part Name: **OUTLINE,TANK**
Drawing Category: **Detail** State: **Released** Sheet **6** of **7**



Part Number: A047D046

Change Notice	CN00053686	Alternates	
Manufacturer Part (MEP)	No	Usage	Production Only
Release Phase Code	Production (P)	Drawing Specification	Number: A047D046_DET
External Regulations	No External Regulation		Revision: C



3D image provided when available for visual reference only.

Associated Specifications

Number	Title	Type	Category	Sub-Category
ESA030B356	Prohibited and Restricted Substances	Engineering Specification	Material Specification	Prohibited And Restricted prohibited And Restricted

Drawing Revision Information

<p>Description of Change(s) Note: Change information is provided for reference only and does not supersede the drawing's primary content.</p> <p>REDRAWN TO CONFORM TO NEW DP-0068-01 TEMPLATE</p> <p>ADMINISTRATIVE CHANGE(S) TO PART ATTRIBUTES, BILL OF MATERIAL, OR ASSOCIATED SPECIFICATIONS.</p>
--

Drawing Authorization

Drafter	Kiran Vitthal Kadam	Date	11APR2022
Checker	Cory Jason Fornell	Date	11APR2022
Approver	Nicholas Charles Sarkis	Date	11APR2022

Document Generated: 11APR2022 21:32 GMT