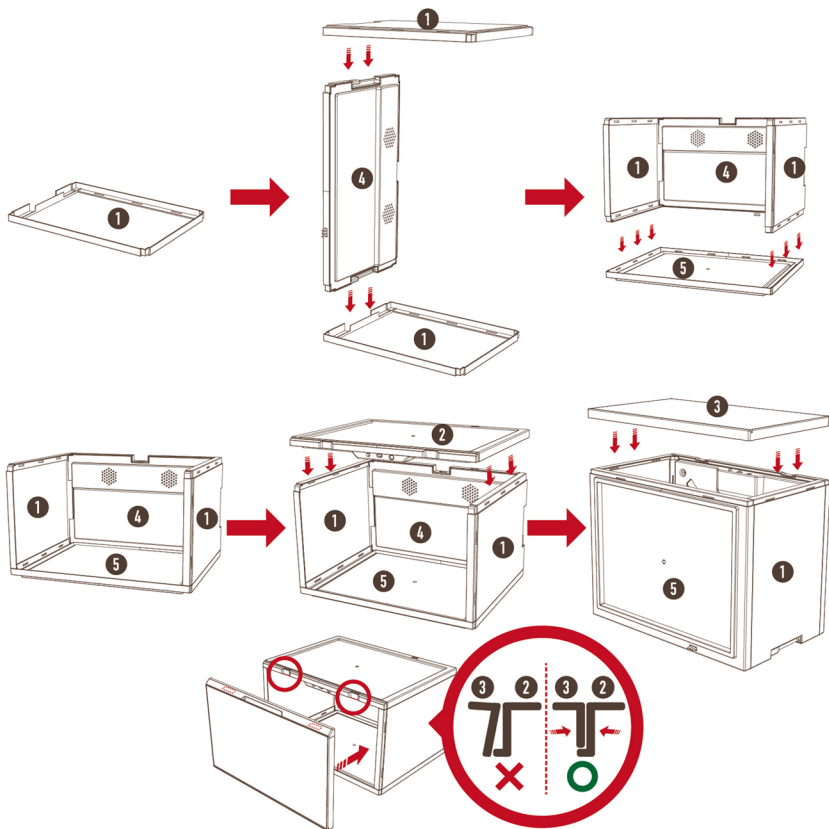


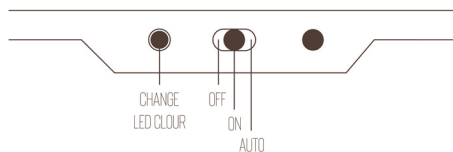
LaceSpace

Step up your game

ASSEMBLY GUIDE



HOW TO USE





SETUP & FAQs

WHAT CABLE & POWER ADAPTER DO I NEED?

Our LED Light cases are powered by USB-C input, we recommend our 5v 2.4a power adapter which will be capable of powering 8 cases. If you elect to use a lower voltage adapter you may find the light is not as bright or need to add additional adapters to power more cases.

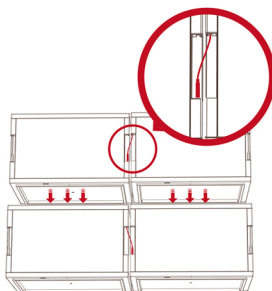
HOW DO I CONNECT THE CASES?

There are connectors for pass-through power on the top and bottom of each case, you will only need to power one case per set of 8.

DO I NEED TO USE THE INTEGRATED USB C CABLES?

You can use the integrated USB-C power cables to pass power between columns, this way you can share the power source from one column to another without the need for adding additional power adapters per column.

We recommend connecting the top and bottom case of each column to the next column.



FOR FURTHER INFORMATION AND ASSEMBLY VIDEOS,
GO TO [LACESPACE.COM.AU/GUIDES](https://www.lacespace.com.au/guides)