

TECHNICAL SERVICE

Cimbali S-Lite

UK

Installation Guide



Electrical checks

1

Make sure that a switch is installed [...] that provides protection against leakage currents of 30 mA



2

Do not use adapters, multiple plugs and/or extension cords



3



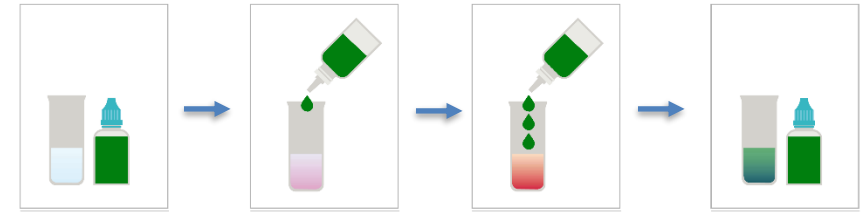
Mandatory if connecting to a 13amp socket
On initial start-up access the machine settings (code1809 or 1234), enter the power grid connection and set to 10A

General characteristics and installation

Recomended Water checks

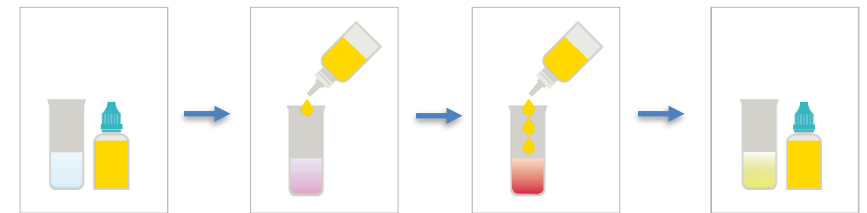
- The water used in coffee machines must be drinkable and suitable for human consumption
- pH and chloride values must comply with applicable laws (recommended between 7-9)
- The total hardness of the water should not exceed 35 – 100 ppm
Alkalinity values should not exceed 40 - 100 ppm
- **When connecting to mains water fill the water tank, run the set up and then alter in Engineers setting – Water supply, Water supply method, Mains.**

Total Hardness must be $< 8^{\circ}\text{F}$



Presence of **Calcium e Magnesium**

Alcalinity (Temporary Hardness)



Presence of **Carbonates** and **Bi-carbonates**

$1^{\circ}\text{d} = 1,78^{\circ}\text{f}$
 $1^{\circ}\text{f} = 10 \text{ ppm}$

General characteristics and installation

User interface – Service menu

Primary Password: 1234 or 1809

All access to Service Menu

(Drinks Setting, Maintenance, Machines Setting, Eng. Setting)

Secondary Password: 2222

Limited access to Service Menu

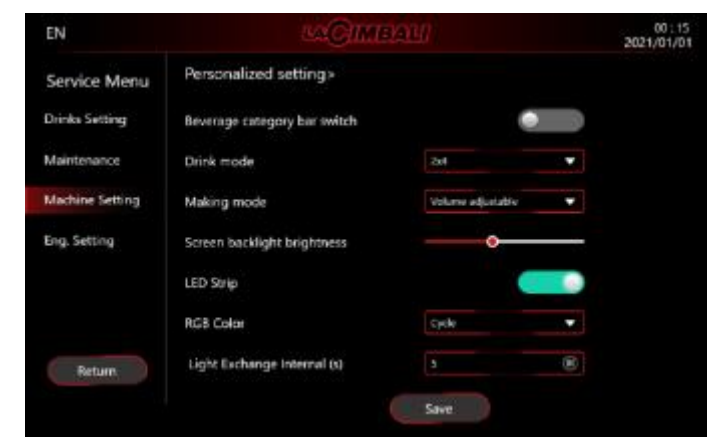
(Drinks Setting, Maintenance, Machines Setting)

Tertiary Password: 1111

Limited access to Service Menu

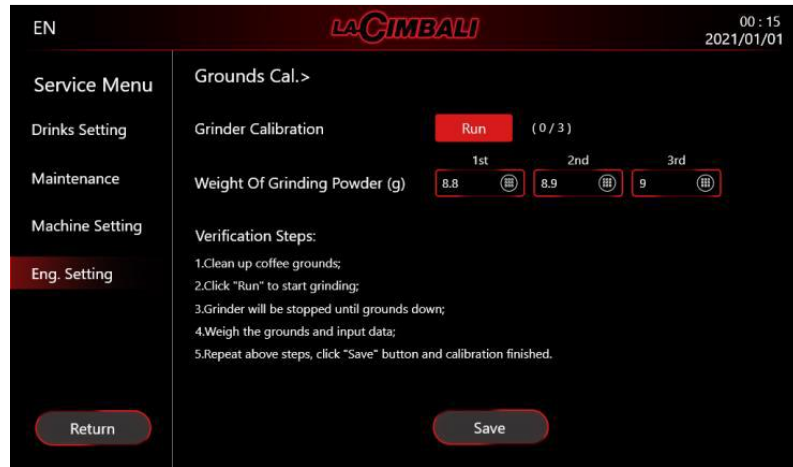
(Drinks Setting only)

Counters are in the information menu.



Grinder settings

GROUNDS CALIBRATION



When using different coffee beans, the amount of powder may deviate from the factory calibration standard. Therefore, **it is recommended to do ground calibration with the chosen beans before using the coffee machine.**

It is necessary to follow the guided procedure displayed on the screen.

GRINDING INDEX

It's a parameter that can be set to adjust the coffee dose produced by the grinder. It's a software correction to counteract the wear of the burrs.

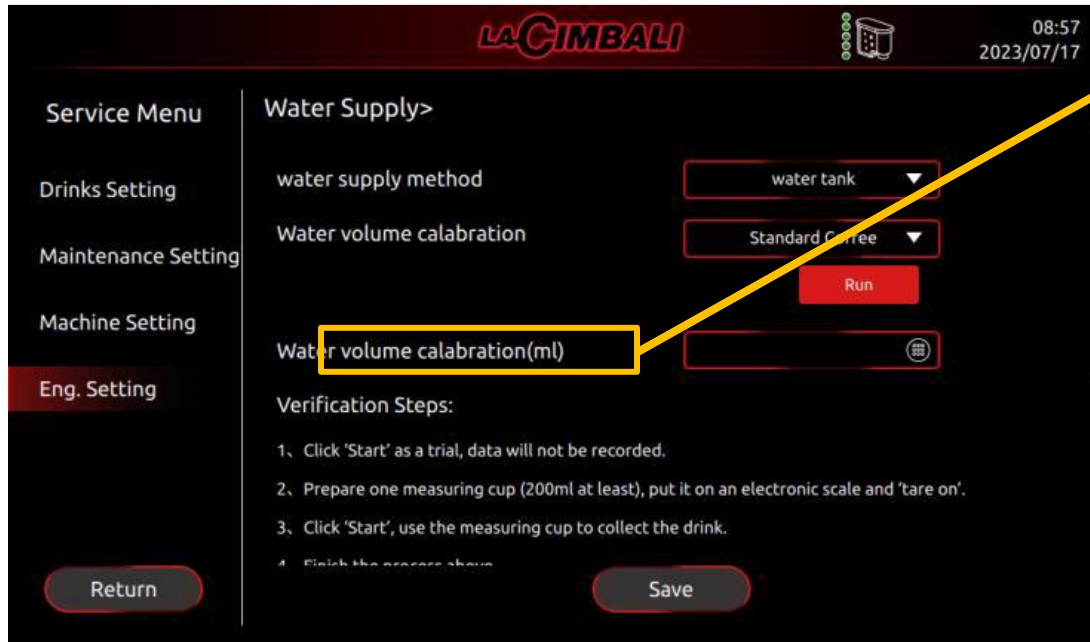
Can be set from 0,7 to 1,3.

If it's < 1 the dose is reduced while if it's >1 the grinder produces more grams



Recipes water settings

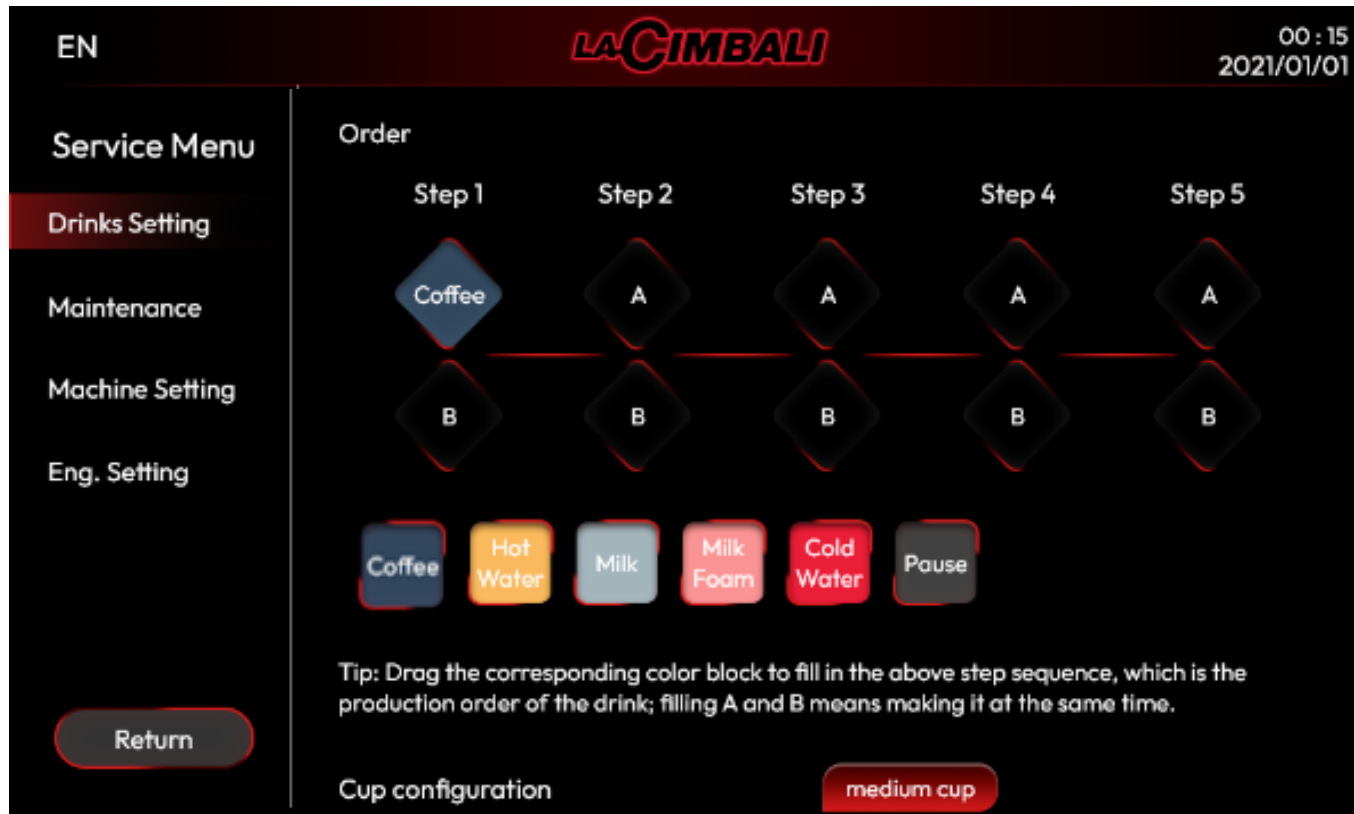
WATER VOLUME CALIBRATION



1. Take a water container with a capacity of about 200ml, place it on an electronic scale for weighing, place it under the drink outlet.
2. Select the beverage to be calibrated, tap "Start" button, and let the water flow into the container;
3. After the brewing is completed, measure the weight of the water and convert it to volume (ml);
4. Input weighed water volume into the corresponding option box of the "Water Calibration (ml)" on the machine interface;
5. 5: Click the "Save" button to complete the calibration.

Calibration also needed for hot water

Recipe construction method



Drinks can be created using a combination of **ingredient blocks**, to be placed in **sequence** or **simultaneously**.

The language can be displayed as the one selected or the selected + English.

The maximum **number** of **recipes** per **page** is **21. (100+ programmable recipes)**

The ingredients:

**COFFEE - HOT WATER - MILK - MILK FOAM
- COLD WATER - PAUSE**

Recipe construction method: cup size

Return

Promotion mark ☒ ☐ ☐

Double Cup

hidden drinks

Small cup

medium cup

big cup

Small Cup Price 1

Medium Cup Price 1

Big Cup Price 1

DIFFERENT SIZES FOR THE SAME RECIPE

Different sizes can be set for the same recipe by activating the option on the recipe menu.

SMALL, MEDIUM, BIG

Daily Operation

Milk circuit

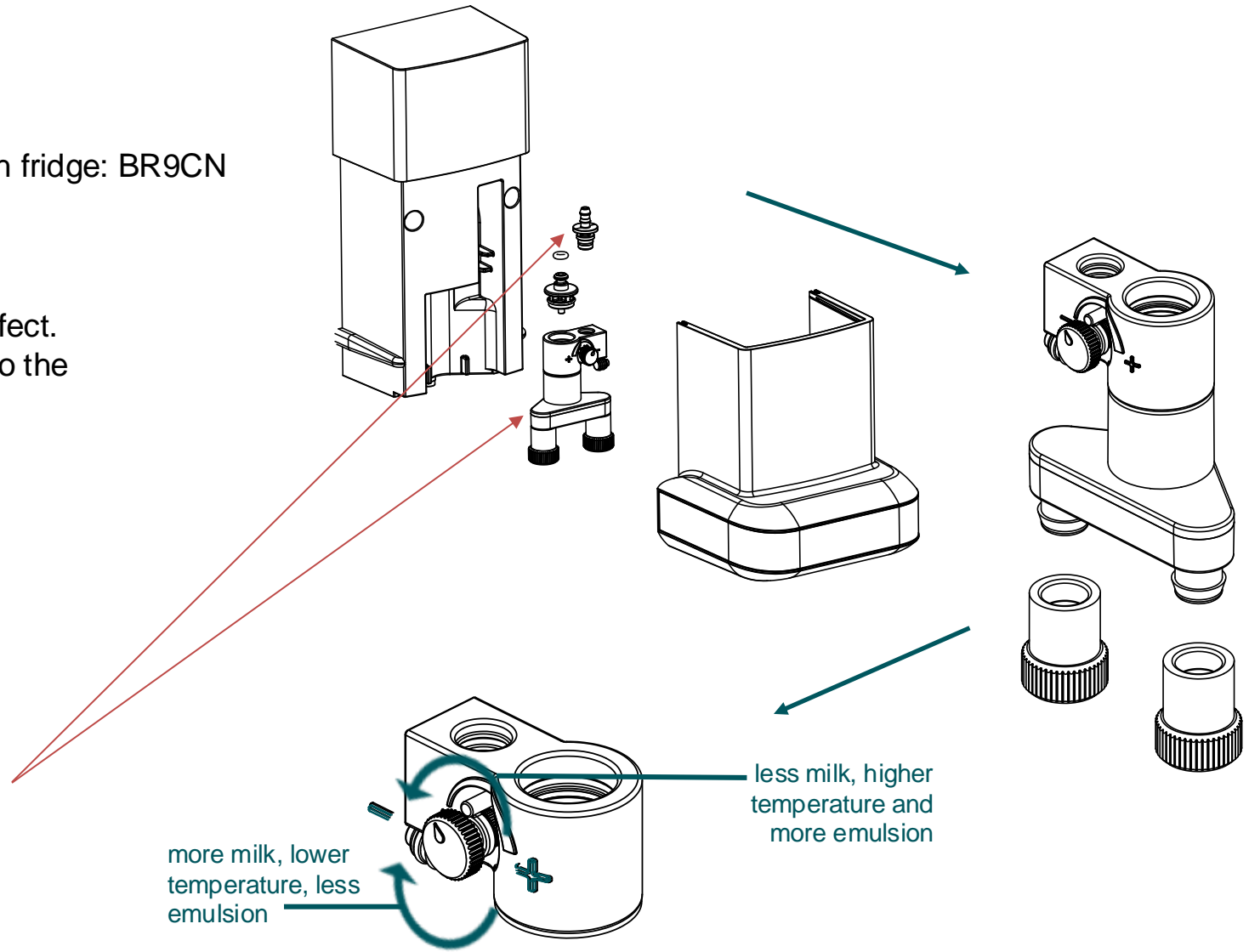
S Lite is in CP13 version. COMPATIBILITY with fridge: BR9CN

VENTURI MILK SYSTEM

- Milk frothing system that uses the Venturi effect.
- The level of frothing is directly proportional to the temperature of the milk.
- Possibility of dispensing hot frothed and unfoamed milk in single and double doses.
- The supply of steam for heating and air for frothing, if present, is fixed.

MILK FLOW VALVE

- By using a valve on the outlet nozzle, it is possible to regulate the flow rate of milk, and adjust the temperature accordingly.
- **The valve and jets shown need to be removed and cleaned every day.**




Descaling Procedure for water tank and mains fed machines.

Instructions

You will require: - Ecocleaner EVO Descaling sachets (part no 610004392)

The descaling process will take around 15 minutes and cannot be cancelled once started.

1. Remove and empty the drip tray and dregs drawer from the machine. Then reinstall them.
2. Press the menu access at the top left corner of the screen select "Descaling". 
3. Confirm the start of the descaling process by tapping "OK". Follow **all** the on-screen instructions.
4. Empty the water tank
5. If configured to tank fed machine remove the internal Brita filter before adding 1 litre of lukewarm water mixed with 1 sachet of Ecocleaner descaler powder.
6. Stir to dissolve thoroughly.
7. Refit the tank and confirm "OK" Descaling will start lasting 10 minutes.
8. Once prompted on the screen, remove the water tank, and rinse it thoroughly. Refill it with fresh water before replacing and confirm.
9. The machine will start rinsing (around 5 minutes). Once ended confirm "OK"
10. Reinstall or replace the Brita water filter.

Notes: - Ensure that you have enough time to complete the entire descaling process without interruption. - If at any point you see the message “Water Tank is Empty” or “Drip Tray is Full”, please add water to the tank or empty the drip tray. - Follow all on-screen instructions carefully for the best result

Maintenance - Care & Cleaning

Cleaning

Starter packs are available that contain all the cleaning products for the machine these are for either the 2 Litre or the 8 Litre model.

SLITE 2L Starter Pck

SLITE 8L Starter Pck

The difference being an adapter and O Ring that is required when fitting a Brita filter within the 8L tank.

It is MANDATORY that regardless of water supply a monthly descale is performed.

Maintenance - Care & Cleaning

Cleaning

CLEANING AREA

CLEANING METHOD



ECOJETSAN
1 LT
Cod. 610004159

Milk circuit

50 cc/day



NEW

ECOCLEANER
TABS 80 (2,4g)
Cod. 610004391

Coffee circuit

1 tab/day



NEW

ECOCLEANER
EVO DESCALER
Cod. 610004392

Hydraulic circuit

1 sachet/3 months



NEW

FILTRO AQUAAROMA
CREMA*
Cod. 532394100

Water

1 every 150L

*For 8L version when fitting a Britta filter an adapter ring is required.