

GPCA JL 4DR CARGO COVER PRO

Trunk Full of Freedom

DESIGNED IN USA. Patented

The most flexible solution for Jeep Wrangler JL Unlimited 4DR cargo privacy protection; Made of water-repellent double-layered durable pro-grade Polyester with structural form-fitting stiffeners all around, the GPCA Cargo Cover PRO can be installed in minutes with easy-to-adjust Velcro straps; Reversible 2 unique looks with multiple configurations according to your needs. Tuck it away in seconds to regain an open cargo area. The package includes our patent-pending GPCA cargo cover and 6 Tie-down D-Plates, install and make your Jeep trunk full of freedom!

What is included in the package *Illustrations may be slightly different than actual product

+ JL 4DR Cargo Cover Pro



◀ Mount the mid row FIRST for the best balance

◀ Mount the tailgate end the last

+ Tie-Down D-Plate X 6



Please contact us if you have any installation questions or missing parts. HELLO@GPCA.US

- * Optional 6 M8 flat head screws for soft top owner
- * Optional compatible cargo organizer on www.gpca.us
- * Optional cover/ top Quick Release screw set on www.gpca.us

+ Explore more on **WWW.GPCA.US**



#GPCAofficial

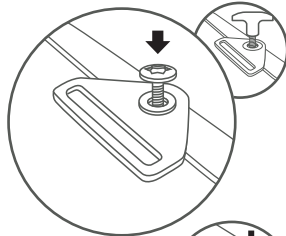
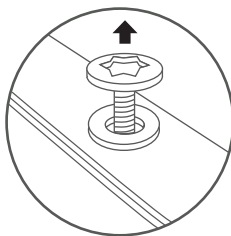
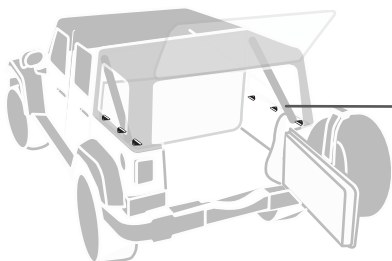
Join our 45K followers

* Jeep, Wrangler, Rubicon, unlimited,JKU are registered trademarks of FCA (Fiat Chrysler Automobiles). GPCA Products(Touching design LLC), has no affiliation with FCA. Throughout this website and catalog the terms Jeep, Wrangler, MOPAR®, & Rubicon are used for identification purposes only. It is not implied that any part listed is a product of, or approved by Fiat Chrysler Automobiles. We just love Jeeps.

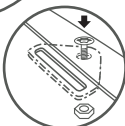
Step 1 Use Jeep Wrangler Hardtop screws and nuts* on the tub edge to hold down the 6 provided Tie-down D-plates with the logo side up.

* The screws are not included to this package. They may or may not come with your Jeep Wrangler purchase. Visit GPCA.us to purchase the compatible GPCA Quick Release PRO set if needed.

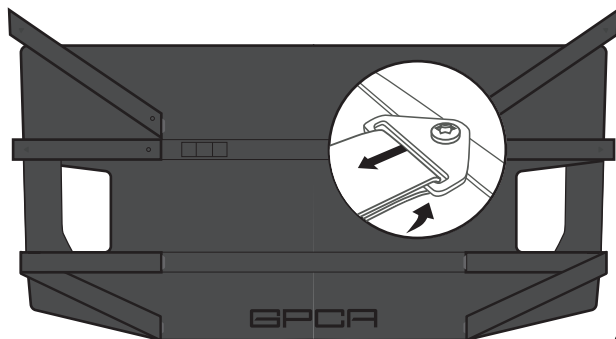
*Quick Release Anchor Bolts sold separately



* Skyone Power Top owner needs additional M8 nuts (not included) to mount with the flat head screw to mount the tie downs UNDER the window panel and tub edge →



Step 2 Mount the cargo cover with care



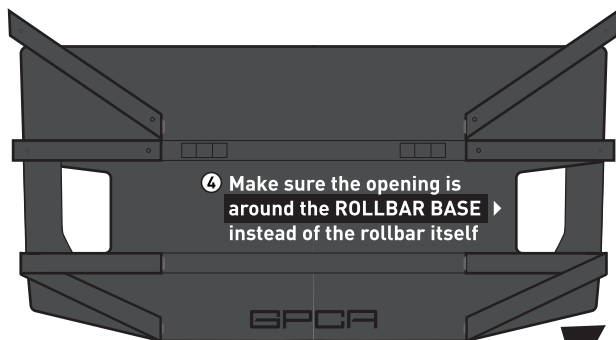
② Mount the far edge next

① Mount the **mid row FIRST** for the best balance

③ Mount the tailgate end the last



Pulling too tight can shift the whole cover and cause misalignment



④ Make sure the opening is around the **ROLLBAR BASE** instead of the rollbar itself

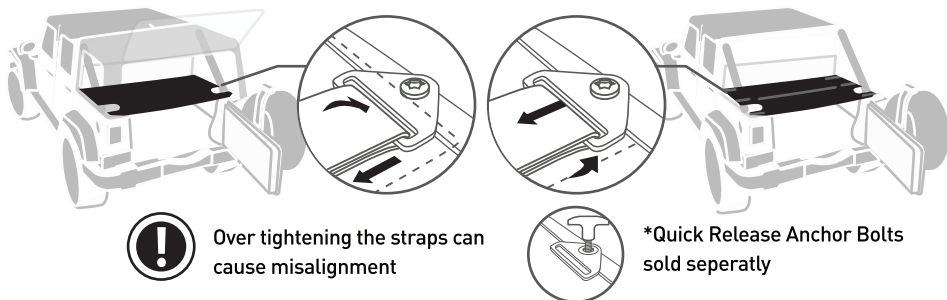
⑤ Close the rollbar base wrap

⑥ Rest the side panels on top of the plastic base, not under

Step 3 Balance all 6 straps with care

When use with the top on, run the straps down through the Tie-down D-plates, pull gently and press the Velcro area. Flip the side panels over the straps.

When use with the top off, place the cover with the strap side down. Run the straps up through the tie-down d-plates on the bottom, pull gently and press the Velcro area



Over tightening the straps can cause misalignment



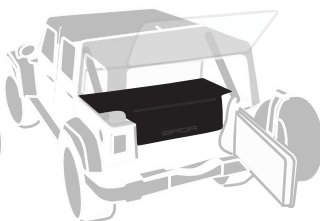
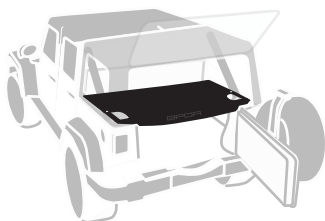
*Quick Release Anchor Bolts sold separately

Done There are 3 amazing configurations, now you have a trunk full of freedom!

A FULL COVERAGE (BOTH SIDES)

B HALF COVERAGE

C REVERSIBLE



D ADDITIONAL 2 MOLLE AREA FOR STRAPPING MORE BAGS ON THE TOP

E TUCK AWAY



FAQ

Q: How to align the side openings to the roll bar base?

A: You might have tightened the 2 straps near the backseat too much and they shifted the whole cover towards to the backseat. Please demount the straps and mount the middle straps first according to the owner's manual.

Q: Is the cargo cover completely flat?

Unlike a flat hard lid, it is not 100% flat. It is a soft cover to put your valuables out-of-sight, with the flexibility to tuck away to free your cargo space when needed. Similar to comparing a soft top to hard top, people like them in different ways. If you balance the 6 straps well, the cover will be relatively flat and providing the full coverage. However, the end of the cover has a slight angle after the first 2 straps in order to cover the cargo space all the way to the tailgate due to the layout of the JL cargo.

Q: Will it do well outdoor and topless in the Summer?

Longtime UV exposure to the polyester material can cause de-coloring over time, our material is similar to what the Jeep factory uses for the interior. Depends on how much UV exposure is, Jeepsers usually apply Aerospace 303 Marine Grade protectant to our cover and all interior fabrics on a Jeep.

Visit our FAQ page (www.GPCA.us/FAQ) for more info.