

GPCA JL 4DR CARGO COVER LITE PLUS

Trunk Full of Freedom

DESIGNED IN USA. Patented

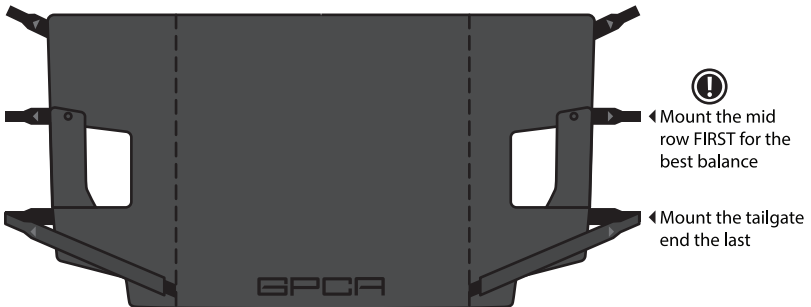
FULL COVERAGE, MUCH EASIER TO USE

Introducing the Jeep Wrangler Unlimited flexible Cargo Cover LITE PLUS under your JL hard/ soft top. Keep your valuable possessions stored in the cargo area of you Jeep safely hidden from view with this fantastic cargo cover. The cover keeps content of the cargo area concealed, giving you added measure of security and most importantly, peace of mind. Hide your valuables and deter thieves, while protecting your important assets. It protects and covers while still allowing access to the cargo area. Specially designed to be easy to install and remove, this cargo cover is tear resistant, lightweight, water-repelling, easy to clean, adjustable and durable, need we say more! Cheers to a trunk full of freedom!

What is included in the package

*Illustrations may be slightly different than actual product

+ JL 4DR Cargo Cover LITE



+ Tie-Down D-Ring X 6



Please contact us if you have any installation questions or missing parts. HELLO@GPCA.COM

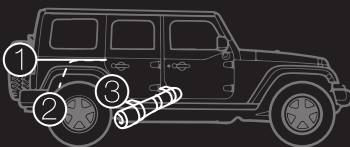
* Optional 6 M8 flat head screws for soft top owner

* Optional compatible cargo organizer on gpc.com

* Optional cover/ top Quick Release Bolt set on gpc.com

+ Explore more on

WWW.GPCA.COM



#GPCAofficial

Join our 44K followers

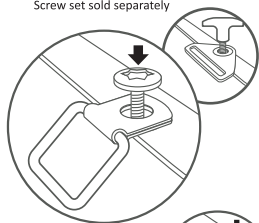
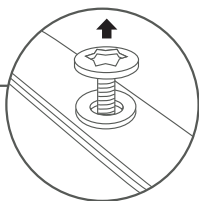
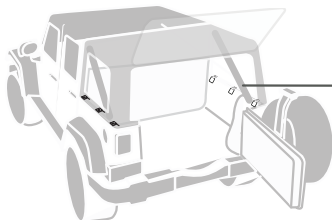
* Jeep, Wrangler, Rubicon, unlimited, JKU are registered trademarks of FCA (Fiat Chrysler Automobiles). GPCA, has no affiliation with FCA. Throughout this website and catalog the terms Jeep, Wrangler, MOPAR®, & Rubicon are used for identification purposes only. It is not implied that any part listed is a product of, or approved by Fiat Chrysler Automobiles. **We just love Jeeps.**

* Search "GPCA Cargo Cover installation" on Youtube or visit our FAQ page (www.GPCA.com/FAQ) for more info.

Step 1 Use Jeep Wrangler hard top screws* on the tub edge to mount the 6 provided Tie-down D-rings.

*The screws are not included in this package. They may or may not have come with your Jeep Wrangler purchase. Visit GPCA.com to purchase the compatible **GPCA Quick Release Anchor Bolt set** if needed.

*Quick Release Thumb Screw set sold separately



* Skyone Power Top owner needs additional M8 nuts (not included) to mount with the flat head screw to mount the tie downs **UNDER** the window panel and tub edge →



Step 2 Mount the cargo cover with care



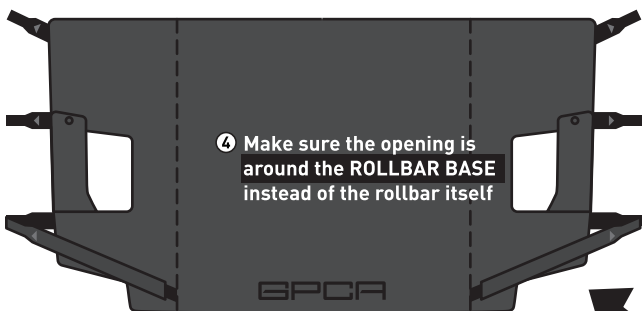
② Mount the far edge next

① Mount the **mid row FIRST** for the best balance

③ Mount the tailgate end the last



Pulling too tight can shift the whole cover and cause misalignment

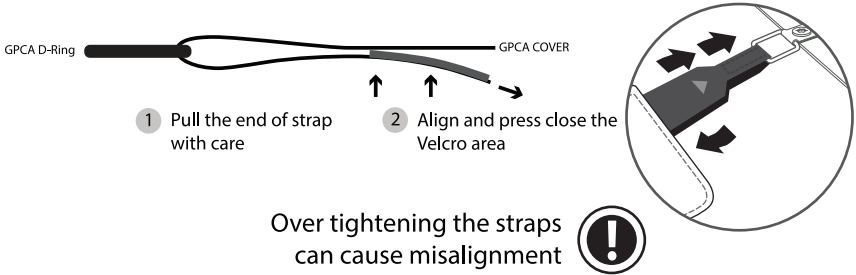


④ Make sure the opening is around the **ROLLBAR BASE** instead of the rollbar itself

⑤ Close the rollbar base wrap

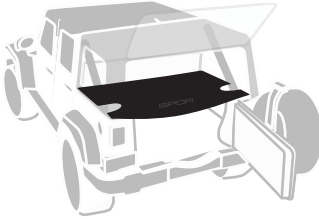
⑥ Rest the side panels on top of the plastic base, not under

Step 3 Balance all 6 straps with care

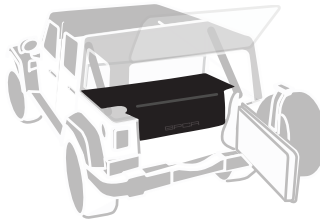


Done There are 3 configurations. Demount the straps accordingly, now you have a trunk full of freedom!

A FULL COVERAGE



B HALF COVERAGE



C TUCK AWAY



FAQ

Q: How to align the side openings to the roll bar base?

A: You might have tightened the 2 straps near the backseat too much and they shifted the whole cover towards to the backseat. Please demount the straps and mount the middle straps first according to the owner's manual.

Q: Is the cargo cover completely flat?

Unlike a flat hard lid, it is not 100% flat. It is a soft cover to put your valuables out-of-sight, with the flexibility to tuck away to free your cargo space when needed. Similar to comparing a soft top to hard top, people like them in different ways. If you balance the 6 straps well, the cover will be relatively flat and providing the full coverage. However, the end of the cover has a slight angle after the first 2 straps in order to cover the cargo space all the way to the tailgate due to the layout of the JL cargo.

Q: Will it do well outdoor and topless in the Summer?

Longtime UV exposure to the polyester material can cause de-coloring over time, our material is similar to what the Jeep factory uses for the interior. Depends on how much UV exposure is, Jeepsers usually apply Aerospace 303 Marine Grade protectant to our cover and all interior fabrics on a Jeep.

Visit our FAQ page (www.GPCA.com/FAQ) for more info.