

GPCA JK 4DR CARGO COVER PRO

Trunk Full of Freedom

DESIGNED IN USA. Patented

The most flexible solution for Jeep Wrangler Unlimited (JK 4DR) cargo privacy protection; Made of Water-repellent durable pro-grade polyester with structural form-fitting stiffeners all around, the GPCA Cargo Cover PRO can be installed in minutes with easy-to-adjust Velcro straps; Reversible 2 unique looks with multiple configurations according to your needs. Tuck it away in seconds to regain an open cargo area. The package includes our BESTSELLER Patented GPCA cargo cover and 6 Tie-down D-plate, at an amazing combo price. Grab it and make your Jeep trunk full of freedom!

What are included in the package *Illustrations may be slightly different than actual product

+ Cargo Cover Pro X 1



+ Tie-Down D-Plate X 6



* Compatible cargo organizer and cover/ top Quick Release screws-and-nuts kit are available on www.gpca.us

* Please contact us if you have any missing parts, we will fix it soon. HELLO@GPCA.US

Visit us. Shop California Authentic Jeep accessories

WWW.GPCA.US



#GPCAofficial

* Jeep, Wrangler, Rubicon, unlimited, JKU are registered trademarks of FCA (Fiat Chrysler Automobiles). GPCA Products (Touching design LLC), has no affiliation with FCA. Throughout this website and catalog the terms Jeep, Wrangler, MOPAR®, & Rubicon are used for identification purposes only. It is not implied that any part listed is a product of, or approved by Fiat Chrysler Automobiles. We just love Jeeps.

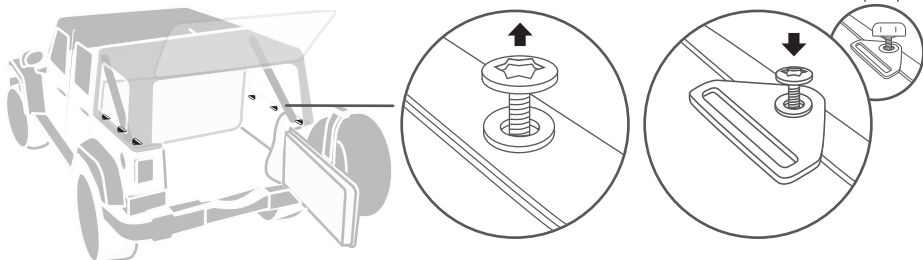
Instructions

Watch video on GPCA.us/installation

Step 1 Use Jeep Wrangler Hardtop screws and nuts* on the tub edge to hold down the 6 provided Tie-down D-plates with the logo side up.

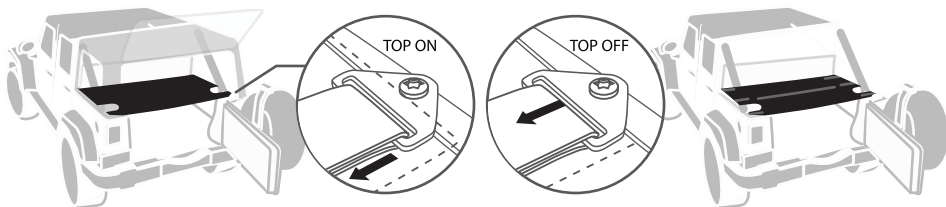
* The screws and nuts kit are not included to this package. They may or may not come with your Jeep Wrangler purchase. Visit GPCA.us to purchase compatible GPCA Quick Release screw set if needed.

*Quick Release Thumb Screw set sold separately



Step 2 When use with the top on, place the cover logo side up. Run the straps down through the Tie-down D-plates, press the Velcro area to secure the tightness*. Flip the side panels over the straps.

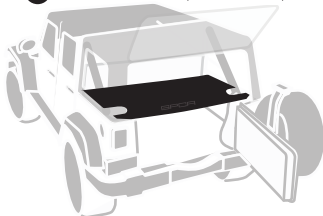
When use with the top off, place the cover with the logo side down. Run the straps up through the tie-down D-plates, press the Velcro area to secure the tightness*. Tuck the side panel edges under the tub to fix the side panels after adjusting the strap.



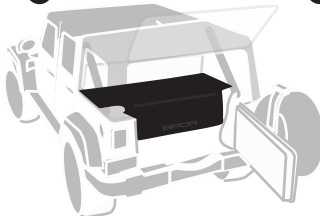
* Please carefully balance the cover and adjust the length of the 6 straps with care to center the cargo cover. For more detail, watch the instructional video: www.GPCA.us/installation

Done There are these 3 amazing use configurations, cheers to the trunk full of freedom!

A FULL COVERAGE (BOTH SIDES)



B HALF COVERAGE



C TUCK AWAY

