

ADVANCED REJUVENATING CONCEPTS™

DISCOVER THE SCIENCE
OF SKIN REJUVENATION™

EST. 1991



Discover the Science

SKIN HEALTH, PERSONALIZED

We're differentiating and empowering aestheticians with formulations that deliver fully-customized client experiences—because everyone's skin is unique. Each product family is designed to deliver the perfect balance of scientifically researched ingredients with innovative technology to ensure long-lasting benefits towards graceful aging and improved skin health.

Visible results, improved client satisfaction, and tailored to meet the needs of all skin types, Advanced Rejuvenating Concepts' forté is empowering and differentiating aesthetic entrepreneurs in a growing skin care market.



AMINO PEPTIDES + GROWTH FACTORS

Encourages the skin to act younger and improve skin.



HYDROXY ACIDS + RETINOLS

Revitalize skin texture and improves cell regeneration.



CHIRALLY OPTIMIZED

For lasting wear, bioavailability, and improved results.



HYALURONIC ACID + OMEGA-3/-6 ACIDS

Improve barrier functions and support skin elasticity.



BOTANICAL EXTRACTS + PLANT STEM CELLS

Shield the skin from premature signs of aging.



MICRO- ENCAPSULATION

For optimal delivery and long-lasting skin benefits.

ADVANCED REJUVENATING CONCEPTS™

DISCOVER THE SCIENCE OF SKIN REJUVENATION™



PRODUCT TYPES

- 3 CLEANSING SOLUTIONS
- 8 SCRUBS & MASKS
- 12 SERUMS & TREATMENTS
- 18 MOISTURIZERS
- 23 EYE & LIP TREATMENTS
- 26 HOME EXFOLIATION
- 29 SUN CARE

COLLECTIONS

- 36 CLINICAL
- 38 CELLULAR SOLUTIONS
- 40 HYPERPIGMENTATION
- 42 OILY SKIN, ACNE
+ COMBINATION
- 44 SENSITIVE + ROSACEA
- 46 PROFESSIONAL PEELS



Cleansers & Toners

Deep cleaning solutions that every skin craves. Advanced Rejuvenating Concepts concentrated cleansing formulas remove dirt, makeup and dead skin cells to encourage brighter, balanced skin. Each one is naturally formulated without synthetic colors, fragrance, sodium lauryl sulfate, or formaldehyde-releasing preservatives.



DAILY CLEANSING

EXFOLIATING ENZYME GEL CLEANSERS



FRUITZYNE CLEANSER

TEXTURE SMOOTHING ENZYMES

This soap-free, gently-foaming gel formulation preps the skin to optimize the skincare regimen that follows. Formulated with cranberry enzymes, it lightly exfoliates without drying skin's protective moisture barrier.

Cranberry Extract refines pores and removes dead skin to deliver an exceptional deep-pore cleansing experience.

Shea Butter & Glycerin hydrate and moisturize for soft, supple skin.

USE: Lather with tepid water and massage over skin, then rinse. Follow with Fruitzyne Conditioner or Clearifying Toner (Combination Skin Types).

IDEAL FOR: Normal, Dry, or Combination Skin Types

SIZE: 6.7 fl oz / 2 fl oz

DETAILS

- Moisture-balancing formula
- Deep cleans, removes makeup
- Concentrated gel formula
- Paraben, SLS, fragrance free



FRUITZYNE CONDITIONER

TEXTURE SMOOTHING FACIAL TONER

Formulated to exfoliate, refine pores, and improve moisture retention. This AHA formula is designed to reduce the appearance of fine lines and wrinkles, and brighten complexion.

Lactic Acid, Citrus Oils + Grape Extract [Malic Acid] infuse the skin with antioxidants as they help refine pores and smooth texture.

USE: After cleansing, splash lightly over skin, or apply to a cotton pad and swipe, to improve hydration and luminosity. Follow with a serum.

IDEAL FOR: Normal, Dry, or Combination Skin Types

SIZE: 6.7 fl oz / 2 fl oz

DETAILS

- Moisture-balancing formula
- Hydrates and moisturizes
- Improves moisture retention
- Antioxidant protection
- Paraben, SLS, fragrance free

GEL VS. CREAM CLEANSER

Deep cleansing with little-to-no irritation to the skin, ARC gel cleanser formulations allow for a deep pore cleansing and remove dirt, excess oil, and makeup off the skin's surface. Formulated with shea butter and glycerin, they help maintain a perfect water-to-oil balance while clarifying, brightening, and prepping the skin.

Gel cleansers deep clean the skin with a high concentration of fruit enzymes. These natural chemicals are incredibly effective at breaking-down keratin proteins and cleansing away dirt and cellular buildup, while providing antioxidant support against free radicals and pollutants.

A cleansing cream, lotion, or milk, like Phyto-Soothing Cleanser, is made from lightweight emollients and oils that cling to the dirt, makeup, and grime on the skin's surface. Because of its gentle formula, Phyto-Soothing Cleanser is highly beneficial for dry or sensitive skin types.

DAILY CLEANSING

OIL CONTROL CLEANSERS



CLEARIFYING WASH

OIL-BALANCING CLEANSER

This soap-free, non-foaming gel cleanser is formulated with salicylic acid, a gentle yet effective BHA that is ideal for exfoliating oily skin while offering optimal oil control and acne reduction.

Salicylic Acid + Elemi Gum regulate oil production, improve skin texture, and help prevent cell buildup.

Shea Butter & Glycerin help prevent over-drying of skin barrier.

USE: Lather with tepid water and massage over skin, then rinse. Alternate use with Blemish Control Wash or Clear Skin Cleansing Bar as needed.

IDEAL FOR: Oily, Acne or Combination Skin Types

SIZE: 6.7 fl oz / 2 fl oz

DETAILS

- Exfoliation and oil control
- Reduces breakouts / blemishes
- Deep cleanses dirt and debris
- Concentrated gel formula
- Paraben, SLS, fragrance free



CLEARIFYING TONER

OIL-BALANCING TONER

Formulated to exfoliate, clarify and help tighten pores. This high-strength hydroxy acid formula is low pH to help dissolve cell buildup and breakouts.

Glycolic + Salicylic Acid encourage exfoliation, release blocked pores, and constricts pores to prevent future breakouts. Bacteriostatic benefits help reduce infection and inflammation.

USE: After cleansing, splash lightly over skin, or apply to a cotton pad and swipe, to improve hydration and luminosity. Follow with a serum.

IDEAL FOR: Oily, Acne, or Combination Skin Types

SIZE: 6.7 fl oz / 2 fl oz

DETAILS

- Exfoliation and oil control
- Reduces breakouts / blemishes
- Minimize pore appearance
- Paraben, SLS, fragrance free



BLEMISH CONTROL

BENZOYL PEROXIDE [BPO] ACNE REDUCTION

This soap-free formulation with BPO is used to help reduce inflammation, infection, and breakouts associated with cystic acne.

Benzoyl Peroxide [5% or 10%] is a pharmaceutical agent that delivers rapid acne-clearing results. Many doctors use BPO treatments with an antibiotic for the treatment of inflammatory acne.

USE: Alternate the use of Clearifying Wash and Blemish Control Wash to improve results, reduce dependency/overuse, and prevent irritation.

IDEAL FOR: Acne

SIZE: 6.7 fl oz

DETAILS

- Clinical formula for cystic acne
- Complements Rx antibiotics
- Paraben, SLS, fragrance free

DAILY CLEANSING



CLEAR SKIN CLEANSING BAR

FACE & BODY ACNE BAR

Natural oil control cleansing bar helps reduce breakouts and inflammation on the face and body.

Sulfur + Salicylic Acid release blocked pores, and constrict pores to prevent future breakouts. Bacteriostatic benefits help reduce infection and inflammation.

Coconut Oil, Safflower Oil + Glycerin promote hydration to combat the drying effects of skin brighteners.

USE: In the morning, lather and cleanse with Clear Skin Bar. At night, use Clearifying Cleanser for a deeper clean. Prolong Clear Skin Bar by keeping it dry and away from water after use.

IDEAL FOR: Oily, Acne, or Combination Skin Types

SIZE: 3.5 oz

DETAILS

- Cleanses, conditions, exfoliates
- Reduces breakouts / blemishes
- Face and body glycerin bar
- Paraben, SLS, fragrance free

EXFOLIATING PUMPKIN ENZYME CLEANSER



PUMPKIN CLEANSER

TEXTURE SMOOTHING PUMPKIN WINE FACIAL WASH

This soap-free, gently-foaming gel formulation helps improve skin texture as it cleanses and refines pores. Formulated with pumpkin enzymes, it lightly exfoliates without drying skin's protective moisture barrier.

Pumpkin + Polyhydroxy Acid [PHA] vitamins and phytosterols that encourage regeneration, help increase collagen density, and provide healing capabilities to the skin.

USE: Lather with tepid water and massage over skin, then rinse. Follow with Pumpkin Conditioner.

IDEAL FOR: Normal, Dry, Oily, Combination or Sensitive Skin Types

SIZE: 6.7 fl oz / 2 fl oz

DETAILS

- Moisture-balancing formula
- Remove dirt and makeup
- Antioxidant skin benefits
- Smooth texture, refines pores
- Paraben, SLS, fragrance free



PUMPKIN CONDITIONER

TEXTURE SMOOTHING PUMPKIN WINE TONER

Formulated to exfoliate, refine pores, and improve moisture retention. This high-strength enzyme formula is designed to address texture and inflammation concerns associated with rosacea.

Pumpkin + Polyhydroxy Acid [PHA] vitamins and phytosterols that encourage regeneration, help increase collagen density, and provide healing capabilities to the skin.

USE: After cleansing, splash lightly over skin, or apply to a cotton pad and swipe, to improve hydration and luminosity. Follow with a serum.

IDEAL FOR: Normal, Dry, Oily, Combination or Sensitive Skin Types

SIZE: 6.7 fl oz / 2 fl oz

DETAILS

- Moisture-balancing formula
- Addresses texture concerns
- Anti-inflammatory support
- Improves moisture retention
- Antioxidant protection
- Paraben, SLS, fragrance free

DAILY CLEANSING

BRIGHTENING CLEANSERS



MELANIN CLEANSER

BRIGHTENING EXFOLIATING FACIAL WASH

This soap-free, gently-foaming gel formulation preps the skin to optimize the skincare regimen that follows. Formulated with cranberry enzymes, it lightly exfoliates without drying skin's protective moisture barrier.

Kojic Acid, Lysine + Cysteine Amino Acids, natural proteins that inhibit tyrosine to help brighten tone, strengthen the skin, assist with hydration, and improve elasticity and suppleness.

USE: Lather with tepid water and massage over skin, then rinse. Follow with Fruitzyme Conditioner or Clearifying Toner.

IDEAL FOR: Normal, Dry, Oily or Combination Skin Types

SIZE: 6.7 fl oz / 2 fl oz

DETAILS

- Inhibits melanin synthesis
- Brightens skin tone
- Deep cleans, removes makeup
- Concentrated gel formula
- Tested across all skin tones
- Paraben, SLS, fragrance free



LIGHTEN CLEANSING BAR

BRIGHTENING FACE & BODY BAR

Targeted brightening face and body cleansing bar formulated with tyrosine inhibitors to encourage brighter, more even-toned skin.

Kojic Acid + Azelaic Acid are natural tyrosine inhibitors with beneficial antimicrobial benefits for both lightening and post-inflammatory lesions.

Coconut Oil, Safflower Oil + Glycerin promote hydration to combat the drying effects of skin brighteners.

USE: In the morning, lather and rinse. At night, use Melanin Cleanser for a deeper clean. Prolong Lighten Bar by keeping it away from water after use.

IDEAL FOR: Normal, Oily, or Combination Skin Types

SIZE: 3.5 oz

DETAILS

- Inhibits melanin synthesis
- Brightens skin tone
- Helps prevent future hyperpigmentation
- Tested across all skin tones
- Paraben, SLS, fragrance free

GENTLE CREAMY CLEANSER



PHYTO-SOOTHING CLEANSER

GENTLE CREAMY FACIAL WASH

Moisture-balancing creamy cleanser, fortified with antioxidants to help prevent signs of premature aging.

Amaranth Protein + Botanicals encourage a healthy barrier and help reduce inflammation with naturally occurring squalane and linoleic acid.

USE: Apply with tepid water and massage over skin, then rinse. Twice a week, emulsify with Dermabuff for a deep cleansing treatment.

PRO USE: In the treatment room, apply a light layer to the skin as a soothing glide medium for Dermaplaning procedures.

IDEAL FOR: Normal, Dry, or Sensitive Skin Types

SIZE: 6.7 fl oz / 2 fl oz

DETAILS

- Soothing moisturizing cleanser
- Anti-inflammatory benefits
- Suitable for sensitive skin types
- Paraben, SLS, fragrance free



Masks & Scrubs

Nature-inspired rejuvenation that hydrates, purifies, clarifies, and restores radiance. Formulated with key actives, like hyaluronic acid, and botanical extracts, Advanced Rejuvenating Concepts masks and scrubs refine pore appearance, improve absorption, and illuminate overall skin complexion.



MASKS & SCRUBS



24K LIFTING GOLD MASK

ILLUMINATING HYDRATING MASK

Delivers radiant results with the luxurious lift of pure 24k gold. This deeply hydrating and boosting mask plumps, softens and firms the look of the skin for a youthful glow.

Colloidal Gold nanoparticles illuminate and help carry beneficial antioxidants deep into the layers of skin.

Coffee boosts skin circulation and supports collagen synthesis.

Hyaluronic Acid draws water into skin cells and increases the overall water content of the epidermis resulting in a softer and firmer look to the skin.

USE: Apply a light layer of 24k Lifting Gold Mask to clean skin and allow it to set for up to 15 minutes. Remove with tepid water.

PRO USE: For glowing post-peel results, apply a light layer of 24k Lifting Gold Mask to the skin and gently massage. Allow the mask to penetrate for up to 15 minutes. Remove with tepid water.

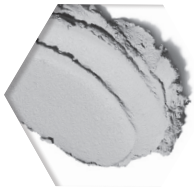
IDEAL FOR: Normal, Dry, Oily, or Combination Skin Types

SIZE: 5 fl oz / 12 oz wt



DETAILS

- Illuminates skin with hydration
- Helps reduce lines and wrinkles
- Improves moisture retention
- Brightens complexion
- Paraben, SLS, fragrance free



HERBAL MOISTURE MASK

VOLCANIC CLAY MASK

Earth clays and phyto-extracts fortify the skin with antioxidants. This soothing aromatherapeutic mask refines pores, smoothes texture and leaves the skin feeling refreshed and bright.

Bentonite [Volcanic Ash Clay] minerals draw-out impurities.

Green Tea, Apple, Sea Algae + 7 More Plant Extracts, antioxidant powerhouses with combined enzymatic and anti-inflammatory skin support.

HOME USE: In the morning, after cleansing, gently massage over the skin surface. Allow the mask to penetrate for up to 15 minutes. Rinse with tepid or warm water.

PRO USE: After neutralizing the peel and light facial massage, apply a generous layer of Herbal Moisture Mask to the skin and gently massage with damp fingertips to distribute evenly. Allow the mask to set for up to 15 minutes. Remove with tepid water.

IDEAL FOR: Normal, Dry, Oily, Combination or Sensitive Skin Types

SIZE: 5 oz wt / 12 oz wt



DETAILS

- Supports barrier functions
- Antioxidant and anti-aging
- Softens skin texture
- Clarifies and reduces redness
- Organically formulated
- Paraben, SLS, fragrance free



DERMABUFF MICROCRYSTAL EXFOLIANT

PORE-REFINING CRYSTAL SCRUB

A deep-cleaning addition with exfoliating crystals and citrus oils to help smooth and brighten skin complexion.

Corundum Crystal [Microdermabrasion Crystal] delivers ultra-fine exfoliation to refine skin texture and brighten complexion.

Citrus Oils + Glycerin refine skin texture and encourage regeneration.

HOME USE: In the morning, after cleansing, gently massage Dermabuff over the skin surface. Rinse with tepid water.

PRO USE: Scrub gently with Dermabuff after cleansing. Dermabuff may be applied before a peel treatment to maximize peel absorption.

IDEAL FOR: Normal, Dry, Oily, or Combination Skin Types

SIZE: 2 fl oz / 4.5 fl oz

DETAILS

- Softens skin texture
- Improves product absorption
- Refines pore appearance
- Clarifies and brightens
- Brightens and deep cleans
- Paraben, SLS, fragrance free



REVITALIZING EXFOLIATING SCRUB

ORGANIC FACE & BODY SCRUB

Organically formulated rejuvenating blend with a plant stem cell mélange and walnut powder to exfoliate and perfect skin texture.

Green Tea, Apple, Sea Algae + 7 More Plant Extracts, antioxidant powerhouses with combined enzymatic and anti-inflammatory skin support.

Coconut Oil, Jojoba, Glycerin, Safflower + Grape Seed Oil, cleansing oils that remove dirt, makeup, and grime on the skin's surface for a refreshing deep-cleansing experience.

USE: In the morning, after cleansing, gently massage over the skin surface. Rinse with tepid water.

IDEAL FOR: Normal, Dry, Oily, or Combination Skin Types

SIZE: 5 oz wt

DETAILS

- Supports barrier functions
- Improves absorption
- Refines skin texture by removing dead skin cells
- Organically formulated with walnut meal
- Paraben, SLS, fragrance free



PORE-REFINING PUMPKIN MASK

EXFOLIATING ENZYME MASK

Formulated to exfoliate, refine pores, and improve moisture retention, this gel-based mask with walnut meal revitalizes skin complexion.

Pumpkin Fruit Wine gently exfoliates and refines skin texture.

Pumpkin Seed Extract contains potent antioxidants and fatty acids that moisturize and help reduce inflammation.

Hyaluronic Acid draws water into skin cells and increases the overall water content of the epidermis resulting in a softer and firmer look to the skin.

HOME USE: In the morning, after cleansing, gently massage over the skin surface. Allow the mask to penetrate for up to 15 minutes. Rinse with tepid or warm water.

PRO USE: For a boost in post-peel results, apply a light layer of Pore Refining Pumpkin Mask to the skin and gently massage. Allow the mask to penetrate for up to 15 minutes. Remove with tepid water. Monitor the client's sensations during the mask as the enzyme boost may trigger sensitivity in some individuals.

IDEAL FOR: Normal, Dry, Oily, or Combination Skin Types

SIZE: 5 fl oz / 12 oz wt



DETAILS

- Revitalizes dull skin
- Brightens complexion
- Supports barrier functions
- Exfoliates dead skin cells
- Organically formulated
- Paraben, SLS, fragrance free



Serums & Treatments

These concentrated components to a regimen delivers actives into the deeper layers of skin, improving clarity, tone, and texture. Day and nighttime treatments are essential to amplifying the results your clients can achieve at home, and help prevent future skin damage.



VITAMIN C SERUMS



HIGH POTENT C

EVERYDAY VITAMIN C SERUM

Concentrated and weightless formula that absorbs quickly to reveal a visibly radiant, firmer appearance and improved skin tone.

L-Ascorbic Acid [20%] potent rejuvenating form of vitamin C.

Fructooligosaccharides skin prebiotic that supports collagen synthesis.

Wine Extract conditions skin, boosts penetration and absorption, and helps reduce and prevent visible signs of aging.

USE: In the morning, apply 2-3 pumps of serum to clean skin. Follow with a moisturizer.

IDEAL FOR: Normal, Dry, or Combination Skin Types

SIZE: 1 fl oz

DETAILS

- Supports collagen synthesis
- Reduces the appearance of lines and wrinkles
- Encourages an even skin tone
- Brightens complexion
- Paraben and fragrance free
- Non-comedogenic



OPTI-RENEW COMPLEX

HYDRATING & PROTECTIVE DAILY SERUM

Encapsulated Vitamins A, C, and E, deliver maximum rejuvenating benefits without irritation. Fatty acids nourish and hydrate for soft supple skin.

Tocopherol, Retinol Palmitate + Ester C, essential encapsulated vitamins work gently to support barrier functions, promote collagen synthesis and regeneration, and improve overall skin texture.

Glycerin + Glycine humectants that soften skin, strengthen the barrier, and improve hydration and cell turnover.

USE: In the morning, apply 2-3 pumps of serum to clean skin. Follow with a moisturizer.

PRO USE: Opti-Rew is ideal for use with Ultrasonic infusion. Emulsify with Rest-N-Restore for the best results.

IDEAL FOR: Normal, Dry, or Sensitive Skin Types

SIZE: 1 fl oz / 2 fl oz



DETAILS

- Brightens discolorations
- Hydrates, improves suppleness
- Improves tone and texture
- Softens lines and wrinkles
- Paraben and fragrance free
- Non-comedogenic



VITAMIN C

Scientifically researched and proven, Vitamin C delivers diverse photoprotection and anti-aging benefits. It helps neutralize free radicals and prevent cell damage, while contributing to collagen synthesis and repair of the dermal matrix.

BENEFITS

- Quenches free radicals and helps prevent photoaging
- Influences collagen synthesis to help strengthen and firm the skin
- Tyrosine inhibitor that helps prevent and improve age spots, freckles, and mottled skin tone
- Reduces inflammation and irritation from free radicals and UV
- Prevents and helps fade post-inflammatory hyperpigmentation

WRINKLE-REDUCING SERUMS



MEGA C COMPLEX

3-IN-1 REJUVENATING & FIRMING VITAMIN C SERUM

Potent and stimulating vitamin C serum that absorbs quickly to reveal a visibly radiant, firmer appearance and improved skin tone. Formulated with Matrixyl 3000 and stem cells, it encourages rapid collagen synthesis to help repair damaged skin and illuminate dull skin.

Palmitoyl Oligopeptide + Palmitoyl Tetrapeptide-7 [Matrixyl 3000®]

3-in-1 designer peptide that helps reduce the look of lines and wrinkles, brighten complexion, and firm the skin.

Apple Cell Culture Extract contains antioxidant powerhouses for rejuvenation.

L-Ascorbic Acid [20%] potent rejuvenating form of vitamin C.

Hydroxy Acids gently exfoliate and boost absorption of anti-aging actives.

Tocopherol [D] + Tocotrienols provide antioxidant support.

USE: In the morning, apply 2-3 pumps of serum to the face, neck and chest. Follow with Phyto-DMAE Cream or Refirm Peptide Cream.

IDEAL FOR: Normal or Dry Skin Types

SIZE: 1 fl oz

DETAILS

- Supports collagen synthesis
- Addresses laxity, sagging skin
- Reduces the appearance of lines and wrinkles
- Encourages an even skin tone
- Brightens complexion
- Paraben and fragrance free
- Non-comedogenic

SKIN TYPES + VITAMIN C SERUMS

HIGH-POTENT C

BENEFITS:

Lightweight
Oil-free
Absorbs quickly
Economical solution

IDEAL FOR:

Normal/Balanced
Combination
Dry Skin
Sun Damage

NOT RECOMMENDED:

Oily Skin
Acne Concerns
Sensitive Skin
Rosacea

OPTI-RENEW COMPLEX

BENEFITS:

Moisturizing
Non-Comedogenic
Gentle, Non-Irritating
Encapsulated C

IDEAL FOR:

Normal/Balanced
Combination Skin
Dry Skin
Sensitive Skin

NOT RECOMMENDED:

Oily Skin
Acne Concerns
Rosacea

MEGA C COMPLEX

BENEFITS:

Peptide + Stem Cell
Stimulating
Lightweight
Absorbs quickly

IDEAL FOR:

Normal/Balanced
Dry Skin
Aging Concerns
Sun Damage

NOT RECOMMENDED:

Oily Skin/Acne
Combination Skin
Sensitive Skin
Rosacea

WRINKLE-REDUCING SERUMS

LINE & WRINKLE REDUCTION



RAPID RENEWAL

VOLUMIZING, ANTI-AGING DAILY SERUM + RETINOL

A revolutionary facial serum to brighten and smooth skin's texture with the power of alpha lipoic acid, retinol, and a proprietary blend of whole plant extracts. Together, they brighten, plump and smooth skin's texture, and contribute to more radiant looking skin.

Alpha Lipoic Acid [Thioctic Acid] fat and water-soluble antioxidant that helps to regenerate other antioxidants in the skin.

Retinol + Retinyl Palmitate reduce the appearance of lines and wrinkles with time-released encapsulation for maximum efficacy with minimal irritation.

Green Tea, Apple, Chamomile, and Sea Algae Extracts antioxidant powerhouses with combined enzymatic and anti-inflammatory skin support.

USE: At night, on clean skin, apply 2-3 pumps of serum to the face, neck and chest.

IDEAL FOR: Normal or Dry Skin Types

SIZE: 1 fl oz

DETAILS

- Supports collagen synthesis
- Addresses laxity, sagging skin
- Reduces the appearance of lines and wrinkles
- Brightens complexion
- Organic ingredients
- Paraben and fragrance free
- Non-comedogenic



WRINKLE RELEASE

EXPRESSION LINE SOLUTION

Formulated to help smooth expression lines, improve the look of dynamic wrinkles, and prevent future wrinkle development.

Acetyl Hexapeptide-3 [10% Neuropeptide] helps to reduce the look of expression lines.

HOME USE: Morning and night, apply serum to dynamic wrinkles.

PRO USE: Apply Wrinkle Release at the end of the treatment, before a moisturizer. For best results, penetrate into areas of the face where dynamic wrinkles form with your Ultrasonic device.

IDEAL FOR: Normal, Dry, or Combination Skin Types

SIZE: 1 fl oz / 2 fl oz



TREATMENT AREAS

- Forehead lines
- Glabella lines (11's)
- Crow's feet /Bunny nose
- Nasolabial folds / laugh lines
- Marionette lines
- Lip lines



ULTRA HYDRATING SERUM

VOLUMIZING PEPTIDE HYDRATION SERUM

Glides effortlessly onto the skin and penetrates rapidly to improve skin tone and texture, while promoting a firmer, more lifted skin appearance.

Low + High Molecular Weight Hyaluronic Acid Complex deeply hydrates to improve suppleness and activate barrier functions.

Palmitoyl Tripeptide-28 supports collagen synthesis to improve the look of lines, wrinkles, and elasticity.

White Tea Extract a 90% polyphenol isolate for exceptional antioxidant protection from pollution, UV, and environmental damage.

USE: At night, on clean skin, apply 2-3 drops of serum to the face, neck and chest.

IDEAL FOR: Normal or Dry Skin Types

SIZE: 1 fl oz

DETAILS

- Illuminates skin with hydration
- Improves retention
- Reduces the appearance of lines and wrinkles
- Alleviates dehydration/dryness
- Paraben and fragrance free
- Non-comedogenic

SPECIALTY SERUMS



REST-N-RESTORE

PLUMPING OIL-FREE HYDRATION // PRE-MOISTURIZER GEL

A replenishing hyaluronic acid treatment plus the benefits of vitamins A, C, and E, Rest-N-Restore is formulated to provide intense hydration, and plump and smooth the look of skin.

The ultra-light texture absorbs instantly without leaving skin feeling greasy. When used daily, before a moisturizer, it helps prolong the benefits of everyday moisturizers for dry skin.

Sodium Hyaluronate [10% Hyaluronic Acid] a low molecular weight HA increases the overall water content of the epidermis, resulting in softer, smoother, and firmer look to the skin.

Tocopherol, Retinyl Palmitate + L-Ascorbic Acid essential vitamins for skin rejuvenation. Together, they support collagen synthesis, cell regeneration, and improve hydration and suppleness.

HOME USE: Apply to clean skin before a daily moisturizer. Oily skin types can use Rest-N-Restore as a hydration booster without a moisturizer.

PRO USE: Rest-N-Restore Pro is ideal for use with Ultrasonic infusion, microneedle glide, or high frequency glide. Apply it as a finishing serum before a moisturizer for a plumping effect to the skin.

IDEAL FOR: Normal, Dry, Oily, Combination, or Sensitive Skin Types

SIZE: 1 fl oz / 5 oz wt



DETAILS

- Moisture/hydration booster
- Ultra-light gel texture, not sticky
- Alleviates tightness
- Encourages dewey, supple-skin
- Long-term moisture retention
- Alleviates dehydration / dryness
- Non-comedogenic

REDNESS / ROSACEA RELIEF



ADVANCED REPAIR SERUM

NEUTRALIZES REDNESS AND INFLAMMATION

Formulated with a complex blend of phytosterols and Nobel Prize Winning Totarol for delivery, Advanced Repair Serum improves skin resiliency and helps neutralize the appearance of redness.

Canadian Willowherb Extract contains polyphenols that soothe inflammation and reduce redness, with antiviral and antifungal skin benefits.

Licorice Root Extract, a natural tyrosine inhibitor and skin brightener.

Phenyl-T-Butylnitron [Spin Trap] an intelligent antioxidant that helps reduce oxidative stress and supports collagen synthesis.

Emu Oil provides anti-inflammatory support, helps reduce redness and itching, and alleviates some symptoms of dermatitis.

USE: Apply to clean skin daily. It may also be used after sun exposure to help relieve sunburned skin.

PRO USE: Advanced Repair may be used at the end of a facial treatment to help accelerate the wound-healing response or reduce redness. It may also be emulsified with Rest-N-Restore for use in Ultrasonic infusion facials.

IDEAL FOR: Normal, Dry, Oily, or Combination Skin Types

SIZE: 1 fl oz / 2 fl oz



DETAILS

- All-in-one serum for sensitive skin/rosacea skin types
- Supports barrier functions
- Helps reduce redness
- Enhances skin's resistance to inflammatory triggers
- Brightens complexion
- Paraben and fragrance free
- Non-comedogenic

ACNE/OIL CONTROL

CLEARIFYING TECHNOLOGY



RESURFACING PEEL PADS 10/2 GLY-SAL

EASY ACNE MANAGEMENT // 60 TREATMENT PADS

All-in-one exfoliation and clarifying chemical peel pads. Designed to enhance cell turnover, reduce pore appearance and smooth skin texture, while clarifying and preventing breakouts.

Hydroxy Acids [2% Salicylic + 10% Glycolic] exfoliate cellular buildup, keep pores clear, reduce oil and prevent breakouts.

USE: Apply in the morning and at night, following cleansing. Start using 2-3 times a week, building to nightly use as skin permits. Resurfacing Peel Pads can be used on the face and body, and kept in gym bags to use for on-the-go cleansing after workouts.

IDEAL FOR: Oily Skin Types

SIZE: 60 pads

DETAILS

- Treats mild to moderate acne
- Reduces surface oil
- Refines skin texture
- Prevents breakouts
- Brightens skin tone
- Paraben and fragrance free
- Non-comedogenic



A+ EXFOLIATING GEL

EXFOLIATING AND REGENERATIVE SERUM

Formulated to exfoliate, clarify and help tighten pores. This high-strength AHA and retinol formula is designed to enhance cell turnover, brighten complexion, and reduce the appearance of fine lines and superficial scars.

Retinol + Retinyl Palmitate reduce breakouts and refine skin texture with time-released encapsulation for maximum efficacy with minimal irritation.

Fructooligosaccharides skin prebiotic that supports collagen synthesis.

Glycolic Acid exfoliates and promotes cell renewal.

Glycerin + Glycine humectants that soften skin, strengthen the barrier, and improve hydration and cell turnover.

USE: Apply morning and night to clean skin. Start initial application 2-3 times per week, gradually increasing to daily. If irritation occurs, discontinue use.

IDEAL FOR: Oily or Combination Skin Types

SIZE: 1 fl oz

DETAILS

- Treats mild to moderate acne
- Beneficial for acne scars
- Refines skin texture
- Minimizes pore appearance
- Brightens complexion
- Reduces the appearance of fine lines and sun damage
- Paraben and fragrance free
- Non-comedogenic



CLEARING COMPLEX

BI-FUNCTIONAL HYDRATION & EXFOLIATION

This targeted, triple-action treatment gel helps keep pores clear of impurities and improve skin complexion and clarity. This high strength formula is designed to even the appearance of post-blemish discoloration.

Hydroxy Acids [2% Salicylic + 6% Glycolic] exfoliate cellular buildup, keep pores clear, reduce oil and prevent breakouts.

D-Panthenol [B5] + Niacinamide [B3] promote healing and repair of the skin, smooth texture, and prevent dehydration.

Hydrolyzed Yeast Proteins condition skin and nourish with a combination of antioxidants, amino acids, and flavonoids.

USE: Apply to clean skin morning and night, following cleansing.

IDEAL FOR: Oily Skin Types

SIZE: 1 fl oz

DETAILS

- Treats mild to moderate acne
- Prevent breakouts
- Brightens complexion
- Reduces the appearance of fine lines
- Paraben and fragrance free
- Non-comedogenic

ACNE & LIGHTENING SERUMS



BLEMISH CONTROL TREATMENT

BENZOYL PEROXIDE [BPO] ACNE REDUCTION

Targets acne with a potent BPO concentration, an effective bactericidal agent known to improve skin complexion and clarity. This high strength formula is designed to reduce infection associated with *p. acnes* infection.

Benzoyl Peroxide [5% or 10%] a pharmaceutical ingredient that delivers rapid acne-clearing results.

USE: Apply to areas of the face or body that experience breakouts or use as a spot treatment when acne lesions develop.

IDEAL FOR: Oily Skin Types

SIZE: 2.5 oz

DETAILS

- Clinical acne reduction
- Treats acne cysts
- Prevents breakouts
- Complements Rx acne antibiotics

LIGHTENING & BRIGHTENING



LIGHTEN MORE

MULTI-ACTION BRIGHTENING

Improves the look of dark spots and brightens overall skin tone while protecting skin against further signs of aging. This high strength exfoliating serum is designed to suppress pigment formation and prevent future hyperpigmentation when used in a brightening regimen with sunscreen.

Kojic Acid [3%] antioxidant that inhibits pigment formation.

Azelaic Acid [15%] tyrosine inhibitor with antimicrobial peptides.

Hydroxy Acid Complex [8%] exfoliates and encourages regeneration.

L-Ascorbic Acid potent rejuvenating form of vitamin C.

USE: Apply to clean skin at night. First-time users should start 2-3 times a week, gradually increasing to nightly application as the skin permits. Lighten More may be used all over or as a spot treatment only.

IDEAL FOR: Normal, Dry, Oily, or Combination Skin Types

SIZE: 1 fl oz

DETAILS

- Targets dark spots
- Promotes even skin tone
- Multi-action formula targets causes of uneven pigment
- Leaves skin brighter looking
- Oil-free, Non-comedogenic
- Paraben and fragrance free

SALICYLIC ACID

A BHA derived from willow bark, salicylic treats dermatitis, acne, psoriasis, KP and hyperpigmentation. A keratolytic, comedolytic, and bacteriostatic agent, it encourages exfoliation while decongesting and constricting pores to prevent breakouts.

KOJIC ACID

A by-product of saké manufacturing, kojic acid is a potent antioxidant, but its primary benefit is to lighten sun damaged skin, age spots and post-inflammatory scars. It works by inhibiting tyrosine, an amino acid necessary for pigment formation. Pairing glycolic acid with kojic acid in a serum, like Lighten More, amplifies the effects of the treatment and can be used on all skin colors.



Moisturizers

Multifaceted formulations designed to customize hydration needs with a unique blend of fatty acids, hydration, and antioxidant protection. Advanced Rejuvenating Concepts moisture solutions are soft, supple, and comfortable, and are a fundamental part of every skin care regimen.

DRY SKIN MOISTURIZERS



ADVANCED RECOVERY CREAM

SOOTHING ANTIOXIDANT MOISTURIZER

Multi-action moisture that targets the skin's matrix with antioxidant and anti-inflammatory support, for a firmer, more toned and vibrant appearance. Advanced Recovery Cream can be gently emulsified with a potent retinol (like Retin-A or Renova) to reduce drying effects from the prescription.

Alpha Lipoic Acid [Thioctic Acid] fat and water-soluble antioxidant that helps to regenerate other antioxidants in the skin.

Phenyl-T-Butylnitron [Spin Trap] an intelligent antioxidant that helps reduce oxidative stress and supports collagen synthesis.

Ubiquinone [CoQ10] a potent oil-soluble antioxidant.

USE: Apply to clean, dry skin after a serum.

IDEAL FOR: Normal, Dry, or Sensitive Skin Types

SIZE: 2 fl oz / 5 oz wt



DETAILS

- Rich quenching moisture
- Long-lasting wear
- Helps reduce lines/wrinkles
- Brightens complexion/tone
- Paraben and fragrance free



BETA-CARROT CREAM

VITAMIN-RICH & REGENERATIVE MOISTURE

Multi-action moisturizer that targets texture and tone concerns, Beta-Carrot Cream improves skin elasticity and suppleness as it brightens and improves the look of lines and discolorations.

Carrot Root Extract improves skin elasticity while providing antioxidant and regenerative support.

Retinyl Palmitate reduces the appearance of lines and wrinkles with time-released encapsulation for maximum efficacy with minimal irritation.

Matricaria + Marshmallow Extracts provide calming and astringent benefits to reduce redness and inflammation.

USE: Apply to clean skin in the morning, after a serum.

IDEAL FOR: Normal, Dry, Sensitive, or Combination Skin Types

SIZE: 2 fl oz / 5 oz wt



DETAILS

- Radiance-boosting moisture
- Improves elasticity and texture
- Reduces the look of lines and wrinkles
- Improves skin clarity
- Paraben and fragrance free
- Non-comedogenic



REGENERATING CREAM

BRIGHTENING & SMOOTHING DAILY MOISTURIZER

Enhances skin complexion and luminosity, smoothes texture, and encourages a more even tone. Regenerating Cream helps diminish the appearance of dark spots and brighten overall skin complexion, while protecting skin against further signs of aging.

Acetyl Tetrapeptide-2 a youth peptide that mimics the body's natural growth hormone and triggers cell repair processes. It helps restore firmness and volume by strengthening the dermal matrix.

rh-Oligopeptide-1 [Epidermal Growth Factor] is a Nobel Prize winning polypeptide that boosts cell regeneration and helps fade discolorations.

Licorice Root Extract, a natural tyrosine inhibitor and skin brightener.

USE: Apply to clean, dry skin after a serum.

IDEAL FOR: Normal / Dry Skin Types
Hyperpigmentation Concerns

SIZE: 2 fl oz / 5 oz wt



DETAILS

- Rich quenching moisture
- Improves firmness/laxity
- Helps reduce lines/wrinkles
- Brightens complexion/tone
- Paraben and fragrance free

MOISTURE ADDITIONS



POST PEEL RECOVERY BALM

HEALING & SOOTHING FORMULA

Seals-in moisture and helps the skin recover faster from superficial burns, chapped skin, and severe dry skin.

Foraha Oil + Shea Butter provide the skin with essential fatty acids and nutrients necessary for collagen production and wound healing, and help reduce inflammation of the skin.

- Traps and seals moisture for long-lasting benefits
- Relieves sunburn, dry or scaly skin, blisters and eczema
- Accelerates the wound-healing response post-treatment
- Protects the skin's natural oils and helps relieve inflammation

HOME USE: Apply alone to problem dry skin or use after a daily moisturizer for increased retention and protection.

- PRO USE:** Post Peel Balm has many uses in the treatment room.
- Balm over areas to prevent peel penetration (i.e. waxed areas).
 - Balm after a peel where overexfoliation has occurred.
 - Balm brows and lips as a finishing gloss.

IDEAL FOR: Normal, Dry, or Sensitive Skin Types

SIZE: 1 fl oz / 5 oz wt



DETAILS

- Soothes dry, irritated skin
- Long-lasting moisturization
- Relieves irritation/inflammation
- Paraben and fragrance free



ADVANCED SHADES

CC CREAM WITH SKIN SOOTHING HYDRATION

All-inclusive mineral-based tinted moisturizer camouflages imperfections with a universal tint and brightens skin tone for an illuminating, youthful glow. Pigment-infusion formula blends to match most all skin types.

Green Tea Extract antioxidant and anti-inflammatory skin support.

Hyaluronic Acid increases the overall water content of the epidermis, resulting in softer, smoother, and firmer look to the skin.

USE: Apply to clean skin as a lightweight tinted moisturizer, or after a moisturizer to prime and perfect the skin.

IDEAL FOR: Normal, Dry, Oily, or Combination Skin Types

SIZE: 2.5 fl oz

DETAILS

- Camouflages imperfections
- Brightens complexion
- Lightweight hydration
- Paraben and fragrance free

LIGHTWEIGHT MOISTURIZERS



ULTRALITE LOTION

REJUVENATING MOISTURE FOR OILY SKIN

Lightweight lotion that promotes rejuvenation for oily skin and restores a smoother, brighter appearance to the skin. Ultra Hemp provides anti-aging support and is a favorite post-shave moisturizer for men's skin.

Hemp Oil strengthens barrier and helps soothe compromised skin.

Alpha Lipoic Acid [Thioctic Acid] fat and water-soluble antioxidant that helps to regenerate other antioxidants in the skin.

Green Tea Extract antioxidant and anti-inflammatory skin support.

Licorice Root Extract, a natural tyrosine inhibitor and skin brightener.

USE: Apply to clean, dry skin after a serum.



CLEARIFYING LOTION

ANTIMICROBIAL HYDRATION

A synergistic blend of tea tree and citrus oils help stimulate the natural immunity against *p. bacteria*, while preventing breakouts and dehydration.

Clearifying Lotion is an essential daily product to help combat the drying and inflammatory effects of salicylic and BPO. It compliments retinoid, salicylic, sulfur, and benzoyl peroxide (BPO) based acne treatments.

Tea Tree Oil conditioning and antibacterial, helps reduce inflammation.

Grapefruit + Sweet Orange Oil soften texture and gently exfoliate.

Grape Seed Oil conditions, clears pores, and helps reduce inflammation.

Glycerin + Glyceryl Stearate humectants that soften skin, strengthen the barrier, and improve hydration and cell turnover.

USE: Apply 1-2 pumps of lotion to clean skin.

IDEAL FOR: Normal, Combination, or Oily Skin Types

SIZE: 2 fl oz / 5 oz wt



DETAILS

- Helps reduce lines/wrinkles
- Brightens complexion/tone
- Improves skin clarity
- Supports barrier functions
- Paraben and fragrance free
- Non-comedogenic

IDEAL FOR: Combination or Oily Skin Types, Acne Concerns

SIZE: 1 fl oz

DETAILS

- Improves skin clarity, tone, and texture
- Reduces breakouts
- Anti-inflammatory support
- Paraben and fragrance free
- Non-comedogenic

ANTI-AGING MOISTURIZERS



REFIRM PEPTIDE CREAM

FIRMING ULTRA-RICH MOISTURIZER FOR FACE & NECK

Advanced wrinkle treatment for the face, neck and chest, Refirm combats visible signs of aging by improving skin elasticity, reducing the look of lines and wrinkles, and encouraging a more even skin tone.

Palmitoyl Oligopeptide + Palmitoyl Tetrapeptide-7 [Matrixyl 3000®]

3-in-1 designer peptide that helps reduce the look of lines and wrinkles, brighten complexion, and firm the skin.

Tocopheryl Acetate, Tocopherol + Tocotrienols encapsulated forms of Vitamin E, soothing antioxidants that nourish and soften skin.

Magnesium Ascorbyl Phosphate [MAP-C] encapsulated Vitamin C that delivers potent rejuvenating benefits with minimal irritation.

USE: Apply to the face, neck and chest, morning and night after Mega C. Follow with Sun Protectant. Reserve for the neck and chest only if using Phyto-DMAE Cream.

IDEAL FOR: Normal/Dry Skin Types

SIZE: 2 fl oz / 5 oz wt



DETAILS

- Helps reduce lines/wrinkles
- Brightens complexion/ton
- High-emollient formula
- Supports barrier functions
- Paraben and fragrance free



RENEW CREAM

SOOTHING ANTI-AGING MOISTURE

This skin-renewing daily moisturizer delivers the benefits of omega-3 and omega-6 fatty acids to the skin with the additional benefit of alpha lipoic acid and green tea extract. It locks-in moisture as it helps reduce inflammation, improve skin elasticity, and reduce the look of lines and wrinkles.

Hemp Oil, Tocopherol + Honey strengthen barrier, improve elasticity and promote radiant-looking skin.

Alpha Lipoic Acid [Thioctic Acid] fat and water-soluble antioxidant that helps to regenerate other antioxidants in the skin.

Green Tea Extract antioxidant and anti-inflammatory skin support.

USE: Apply in the morning. Follow with Sun Protectant.

IDEAL FOR: Normal, Dry, or Sensitive Skin Types

SIZE: 2 fl oz



DETAILS

- Nourishes and soothes skin
- Helps reduce lines/wrinkles
- Supports collagen synthesis
- Supports barrier functions
- Paraben free



PHYTO-DMAE CREAM

FIRMING ANTI-AGING MOISTURE

Organically formulated moisturizer infused with a stem cell mélange and DMAE. Phyto-DMAE cream addresses visible signs of aging from UV damage, hormonal changes, and the natural aging process.

Dimethyl Mea [DMAE] enhances cell hydration to give a fuller, more plump appearance and reduces the look of fine lines and wrinkles.

Encapsulated Vitamins A + E antioxidants that support barrier functions, promote regeneration, and improve overall skin appearance.

Green Tea, Apple, Sea Algae + 9 More Plant Extracts, antioxidant powerhouses with a stem cell mélange of anti-aging benefits.

USE: Apply in the morning after Mega C Complex. Follow with Sun Protectant.

IDEAL FOR: Normal, Dry, or Combination Skin Types

SIZE: 1 fl oz / 5 oz wt



DETAILS

- Helps reduce lines/wrinkles
- Brightens complexion/ton
- Supports collagen synthesis
- Addresses laxity, sagging skin
- Organically Formulated



Eye Creams & Lip Care

Highly specialized formulations address the delicate needs of the skin around the eyes or lips—targeting lines and wrinkles, and visible signs of aging. Created with smoothing moisture, plumping peptides, and botanical antioxidants, these unique products are a perfect addition to any skin care regimen.

EYES & LIPS



TRIPLE-ACTION EYE

REPAIRING & SMOOTHING EYE CREAM

Revitalizing 3-in-1 cream that moisturizes, brightens and improves the look of lines, wrinkles, and crow's feet around the eyes.

Palmitoyl Oligopeptide + Palmitoyl Tetrapeptide-7 [Matrixyl 3000®]

3-in-1 designer peptide that helps reduce the look of lines and wrinkles, brighten complexion, and firm the skin.

Retinyl Palmitate reduces the appearance of lines and wrinkles with time-released encapsulation for maximum efficacy with minimal irritation.

Glycolic Acid exfoliates and promotes cell renewal.

USE: Apply gently to the periorbital bone under the brow and below the eye. Do not apply directly over eyelid.

IDEAL FOR: Sun Damage, Crow's Feet, Fine Lines, Dark Circles

SIZE: 0.5 fl oz (15 ml)

DETAILS

- Moisturizing, boosts retention
- Reduces the look of lines, and Crow's Feet
- Brightens dark circles
- Improves texture
- Paraben and fragrance free
- Non-comedogenic



BRIGHTENING EYE

TARGETED BRIGHTENING CREAM FOR DARK CIRCLES

Immediate and long-term brightening benefits for dark circles around the eyes. Arbutin and curcuminoid extracts diminish the look of dark circles while titanium dioxide immediately brightens and primes the eyes.

Tetrahydrocurcuminoids [Turmeric] potent antioxidant that helps diminish the look of dark circles caused by vascular damage.

Alpha Arbutin antioxidant and tyrosine inhibitor that helps diminish the look of dark circles and sun damage.

Titanium Dioxide immediately brightens and primes eye area by reflecting light, resulting in brighter-looking skin.

USE: Apply gently to the periorbital bone under the brow and below the eye. Do not apply directly over eyelid.

IDEAL FOR: Dark Circles and Sun Damage

SIZE: 0.5 fl oz (15 ml)

DETAILS

- Immediate and long-term benefits for dark circles
- Brightens skin tone
- Improves texture
- Paraben and fragrance free
- Non-comedogenic



CONTOUR EYE GEL

PLUMPING & SCULPTING EYE TREATMENT

Boosting treatment gel that helps reduce the look of puffiness, dark circles, and fatigue, and contributes to a more lifted eye appearance. Contour Eye encourages the skin to look and act younger for a revitalized look to the eyes.

L-Proline contributes to collagen strength and enhances UV protection.

D-Panthenol [B5] helps bind moisture to the skin, enhances your daily eye cream, and leaves skin feeling supple and smooth.

Hyaluronic Acid low molecular weight HA increases the overall water content of the epidermis, resulting in softer, smoother, and firmer look.

USE: Apply to eye area and eye lid daily. Use alone or layer with Essential Eyes, Triple-Action Eye or Brightening Eye Cream.

IDEAL FOR: Sun Damage, Crow's Feet, Fine Lines, Dark Circles

SIZE: 0.5 fl oz (15 ml)

DETAILS

- Contributes to a lifted appearance
- Helps reduce eye puffiness
- Reduces the look of lines, and Crow's Feet
- Brightens dark circles
- Improves texture
- Paraben and fragrance free
- Non-comedogenic

EYES & LIPS



ESSENTIAL EYE COMPLEX

COMPLETE REJUVENATION FOR AGING EYES

Addresses damaged skin by encouraging collagen synthesis, nourishing and repairing the skin, and contouring the eye area for radiant results.

Palmitoyl Oligopeptide + Palmitoyl Tetrapeptide-7 [Matrixyl 3000®]

3-in-1 designer peptide that helps reduce the look of lines and wrinkles, brighten complexion, and firm the skin.

Pro-Vitamins K1 + B help repair and soften damaged skin, improve topical vascular concerns, including under eye dark circles, capillary damage, and excess redness to the skin.

Tocopheryl Acetate, Tocopherol + Tocotrienols encapsulated forms of Vitamin E, soothing antioxidants that nourish and soften skin.

USE: Apply gently to the periorbital bone under the brow and below the eye. Do not apply directly over eyelid.

PRO USE: Contour and smooth eyes in the treatment room. Use your Ultra-sonic spatula and penetrate Essential Eye around the periorbital area to smooth and contour the eyes and improve the look of lines and crow's feet.

IDEAL FOR: Sun Damage, Crow's Feet, Fine Lines, Dark Circles

SIZE: 0.5 fl oz (15 ml) / 2 fl oz



DETAILS

- Improves texture/crepeyness
- Helps reduce eye puffiness
- Reduces the look of lines, and Crow's Feet
- Brightens dark circles
- Improves texture
- Paraben and fragrance free
- Non-comedogenic



LIP RENEWAL

ANTI-WRINKLE LIP MOISTURE

Restores a soft, dewy look to the lips, while promoting collagen synthesis for fuller-looking lips and the prevention of lip lines.

Palmitoyl Oligopeptide + Palmitoyl Tetrapeptide-7 [Matrixyl 3000®]

3-in-1 designer peptide that helps reduce the look of lines and wrinkles, brighten complexion, and firm the skin.

Green Tea Extract antioxidant and anti-inflammatory skin support.

Shea Butter, Cocoa Butter + Jojoba nourish, soften and plump the skin.

USE: Apply throughout the day to the lips.

IDEAL FOR: All Skin Types

SIZE: 0.25 fl oz

DETAILS

- Rejuvenates lips
- Improves lip lines
- Promotes fuller-looking lips
- Smooths, hydrates lip lines
- Heals dry, chapped lips
- Paraben free



LUSCIOUS LIPS

HYDRATING, VOLUMIZING & TINTING LIP PLUMPER

Volumizing treatment for the lips, Luscious Lips combats aging lip lines by improving suppleness, boosting natural lip color, and promoting collagen.

Matrixyl Synthe'6 Peptide boosts collagen and hyaluronic acid synthesis to combat the signs of chronic sun damage and lip lines.

Hyaluronic Acid [Fractionated + High Molecular Weight] plumps, hydrates and creates a natural barrier for moisture retention.

Benzyl Nicotinate [B-Vitamin] increases natural flushing and helps improve oxygenation with vasodilation.

USE: Apply throughout the day to the lips only.

IDEAL FOR: All Skin Types

SIZE: 0.25 fl oz

DETAILS

- Reduces the appearance of lip lines and wrinkles
- Defines lips
- Volumizes, fuller appearance
- Hydrates and plumps
- Enhances natural lip color
- Paraben free



15 minutes after initial application.



Exfoliation with Home Peels

Exfoliation is the key to maintaining healthy, luminous skin while preventing visible signs of aging. The combination of sun damage, dehydration, and poor cell turnover all contribute to cellular buildup on the skin's surface and dull skin, mottled/uneven tone, enlarged pores, and orange peel skin. Chemical peeling at home refines texture, encourages brighter, softer, more radiant-looking skin.

GLYCOLIC EXFOLIATION



REJUVENATION 10

NIGHTTIME GLYCOLIC CREAM

Cream-based exfoliation that nourishes the skin as it exfoliates, improves hydration and supports collagen synthesis while you sleep.

Glycolic Acid 5% exfoliates and encourages cell turnover.

Carrot Root Extract improves skin elasticity while providing antioxidant and regenerative support.

Matricaria + Marshmallow Extracts provide calming and astringent benefits to reduce redness and inflammation.

USE: Apply to clean skin at night. First-time glycolic users should start using Rejuvenation 10 2-3 times a week, gradually increasing to nightly application as the skin permits.

IDEAL FOR: Normal, Dry, or Combination Skin Types

SIZE: 2 fl oz

DETAILS

- Ideal for experienced glycolic users
- Revitalizes skin texture, tone
- Reduces the look of lines and wrinkles
- Brightens discolorations
- Paraben and fragrance free
- Non-comedogenic



CRANBERRY EXFOLIATING PEEL

NIGHTTIME GLYCOLIC + ENZYME OIL-FREE SERUM

Smoothing and resurfacing serum that delivers both enzymatic and hydroxy acid exfoliation for brighter, smoother, and softer skin. Cranberry Peel minimizes pore appearance and reduces blackhead formation, and addresses multiple signs of aging in an easy-to-use oil-free serum.

Glycolic Acid 9.5% exfoliates and encourages cell turnover.

Cranberry Extract refines pores and removes dead skin to deliver an exceptional deep-pore cleansing experience.

USE: Apply to clean skin at night. First-time glycolic users should start using 2-3 times a week, gradually increasing to nightly application, as the skin permits.

IDEAL FOR: Normal, Dry, or Combination Skin Types

SIZE: 1 fl oz

DETAILS

- Revitalizes skin texture, tone
- Reduces blackhead formation
- Combats dehydration, dull skin
- Diminishes pore appearance
- Addresses multiple signs of aging/sun damage
- Paraben and fragrance free
- Non-comedogenic



RESURFACING PEEL PADS

FUNCTIONAL EXFOLIATION // 60 TREATMENT PADS

Easy-to-use glycolic pads formulated with CoQ10 and Vitamin A to smooth the look of lines, wrinkles, and discolorations as you sleep.

Glycolic Acid 15% exfoliates and encourages cell turnover.

Uniquinone [CoQ10] a potent oil-soluble antioxidant.

Tocopheryl Acetate, Retinyl Palmitate + Ascorbyl Palmitate essential vitamins for skin rejuvenation. Together, they support collagen synthesis, cell regeneration, and improve hydration and suppleness.

USE: Apply to clean skin at night. First-time glycolic users should start using 2 to 3 times a week, gradually increasing to nightly application as the skin permits.

IDEAL FOR: Normal, Dry, or Combination Skin Types

SIZE: 60 pads

DETAILS

- Easy-to-use treatment pads
- Ideal for experienced glycolic users
- Revitalizes skin texture, tone
- Reduces the look of lines and wrinkles
- Diminishes pore appearance
- Paraben and fragrance free
- Non-comedogenic

REGENERATION & EXFOLIATION



PUMPKIN CREAM

TEXTURE SMOOTHING MOISTURE

Gentle enzymatic exfoliating cream formulated to improve skin texture and nourish sensitive skins. Pumpkin Cream provides the skin with essential fatty acids and nutrients necessary for collagen production and helps reduce inflammation of the skin.

Pumpkin Seed Oil antioxidant, enzymatic, and anti-inflammatory benefits that help refine skin texture and reduce redness and inflammation.

Glycerin + Shea Butter moisturize, support collagen synthesis, and help reduce inflammation of the skin, improving elasticity.

USE: Apply to clean skin at night.

IDEAL FOR: Normal, Dry, Sensitive, or Combination Skin Types

SIZE: 2 fl oz

DETAILS

- Hydrates and softens
- Smooths texture, refines pores
- Reduces the look of lines and wrinkles
- Brightens discolorations
- Paraben and fragrance free
- Non-comedogenic



REVIT-A-LIFT

VITAMIN-RICH & REGENERATIVE MOISTURE

Brightens and smooths skin texture with a time-released form of retinol, Revit-A-Lift delivers a potent dose of vitamin A without irritation or flaking.

Retinyl Palmitate [10x] reduces the appearance of lines and wrinkles with time-released encapsulation for maximum efficacy with minimal irritation.

USE: Apply to clean skin at night.

IDEAL FOR: Normal, Dry, Sensitive, or Combination Skin Types

SIZE: 2 fl oz

DETAILS

- Smooths texture, refines pores
- Reduces the look of lines and wrinkles
- Brightens discolorations
- Non-comedogenic



ORANGE-PEEL SKIN

The combination of dehydration and poor cell turnover—a typical sign of sun damage—contributes to an “orange peel” look on the nose and cheeks.

Alternating the use of Rejuvenation 10 with a retinol can deliver dramatic results for clients who suffer from chronic sun damage and “orange peel” skin. The combination of regeneration with exfoliation brings new skin cells to the surface and improves skin texture.

PEELING AT HOME

A rejuvenating jumpstart to dull looking skin, clients who want to experience peeling and sloughing can pair-up Dermabuff with Cranberry Exfoliating Peel in a nighttime ritual to rejuvenate and soften skin. After 3 consecutive nights, light peeling may occur.

1. Cleanse in the morning with Fruitzyme Cleanser and follow with a light Dermabuff scrub.
2. That night, after cleansing, dry the skin and apply Cranberry Exfoliating Peel.
3. Allow the treatment to absorb overnight.
4. For the next 2 nights, use Cranberry Exfoliating Peel.



Broad Spectrum Protection

Skin-perfecting sunscreens for everyday and every season. These advanced formulations combat the visible signs of aging, with therapeutic levels of SPF protection. Infused with polyphenols, hyaluronic acid, and more, these luxurious sun care products are the most important part of every skin care routine.

SUN PROTECTANT



ULTRALITE MOISTURIZING

BROAD SPECTRUM SPF 50

Provides intense hydration while protecting your skin from everything it faces on a daily basis. A lightweight formula that wears beautifully under makeup.

Zinc Oxide [14.8%] + Octinoxate [7.5%] UVA and UVB sunscreen.

Hyaluronic Acid + Caffeine address the look of lines and wrinkles while supporting a healthy skin barrier.

USE: In the morning, apply after a moisturizer or as a moisturizer.

PRO USE: Apply at the end of a facial treatment.

IDEAL FOR: All Skin Types

SIZE: 2.2 fl oz

DETAILS

- Soothes and hydrates
- Antioxidant infused
- Sheer application
- Hypoallergenic
- Weightless, fast-absorbing
- Paraben and fragrance free
- Free from phthalates, PABA and Oxybenzone



ULTRALITE TINTED

BROAD SPECTRUM SPF 50

Conceals, corrects and perfects the skin with intelligent pigment that blends in sheer with most skin tones. Wear underneath makeup for more coverage or on its own for less coverage. Either way, you're getting SPF 50 protection.

Zinc Oxide [14.8%] + Octinoxate [7.5%] UVA and UVB sunscreen.

Intelligent Pigment blends in sheer with most skin tones, concealing minor imperfections.

Hyaluronic Acid + B3 nourish, hydrate and brighten complexion.

USE: In the morning, apply after a moisturizer or as a moisturizer.

PRO USE: Apply at the end of a facial treatment.

IDEAL FOR: All Skin Types

SIZE: 2.2 fl oz

DETAILS

- Soothes and hydrates
- Antioxidant infused
- Sheer application
- Hypoallergenic
- Weightless, fast-absorbing
- Paraben and fragrance free
- Free from phthalates, PABA and Oxybenzone

SUN CARE FOR EVERYDAY & EVERY SEASON

Skin perfecting formulas that combat the visible signs of aging, every single day. It all starts with Sun Protectant. Infused with polyphenols, hyaluronic acid, and more, these luxurious sun care products are the most important part of every skin care routine.

TRUE-PHYSICAL PROTECTION

Broad spectrum, 100% mineral coverage that's proven to be gentle for all skin types, including sensitive skin, rosacea and acne.

2X PROTECTION

Physical and chemical coverage engineered to deliver outstanding broad spectrum protection against cell damage.

BROAD SPECTRUM COVERAGE

Absorbs, reflects and scatters dangerous UV rays, formulated to be photostable and retain effectiveness during exposure.

SUN PROTECTANT



ORIGINAL OLEOSOME LOTION

BROAD SPECTRUM SPF 30

Ultra-moisturizing, lightweight and sheer, Sun Protectant is formulated with soothing safflower oleosomes and is perfect for everyday wear.

Zinc Oxide [13%] true physical UVA and UVB sunscreen.

Safflower Oleosomes moisturize and promote a slow-release dispersion of sunscreen minerals.

USE: In the morning, apply after a moisturizer or as a moisturizer.

PRO USE: Apply at the end of a facial treatment.

IDEAL FOR: All Skin Types

SIZE: 2.5 fl oz

DETAILS

- Soothes and hydrates
- Sheer application
- Non-irritating
- Weightless, fast-absorbing
- Paraben and fragrance free
- Free from phthalates, PABA and Oxybenzone



MINERAL SUNSCREEN SPRAY

BROAD SPECTRUM SPF 30 // WATER RESISTANT 80 MINUTES

A non-aerosol and reef-safe mist that leaves the skin soft and smooth. This easy-to-apply moisturizing mist is formulated with vitamin E, cocoa butter, green tea and aloe vera to leave the skin hydrated and protected. The perfect choice for active outdoor days.

Zinc Oxide [6%] + Titanium Dioxide [6%] true physical, non-nano, and reef safe UVA and UVB sunscreen.

Green Tea, Pomegranate + Aloe Vera skin-soothing antioxidants.

USE: When outdoors for extended periods of time.

IDEAL FOR: All Skin Types

SIZE: 6 fl oz

DETAILS

- Water resistant 80 min
- Hypoallergenic
- Non-comedogenic
- Reef safe, non-nano
- Paraben and fragrance free
- Free from phthalates, PABA and Oxybenzone



SHEER MINERAL

BROAD SPECTRUM SPF 50+

Pure physical protection that perfects the skin and delivers double-action protection against UV, pollution, blue light, and environmental damage. The sheer texture glides on perfectly and leaves the skin fresh and dewey looking from the inside-out.

Zinc Oxide [13.75%] true physical UVA and UVB sunscreen.

Green Tea Polyphenols, Resveratrol + CoQ10 deliver powerful antioxidant protection to help support collagen synthesis and a healthy barrier.

USE: In the morning, apply after a moisturizer or as a moisturizer.

PRO USE: Apply at the end of a facial treatment.

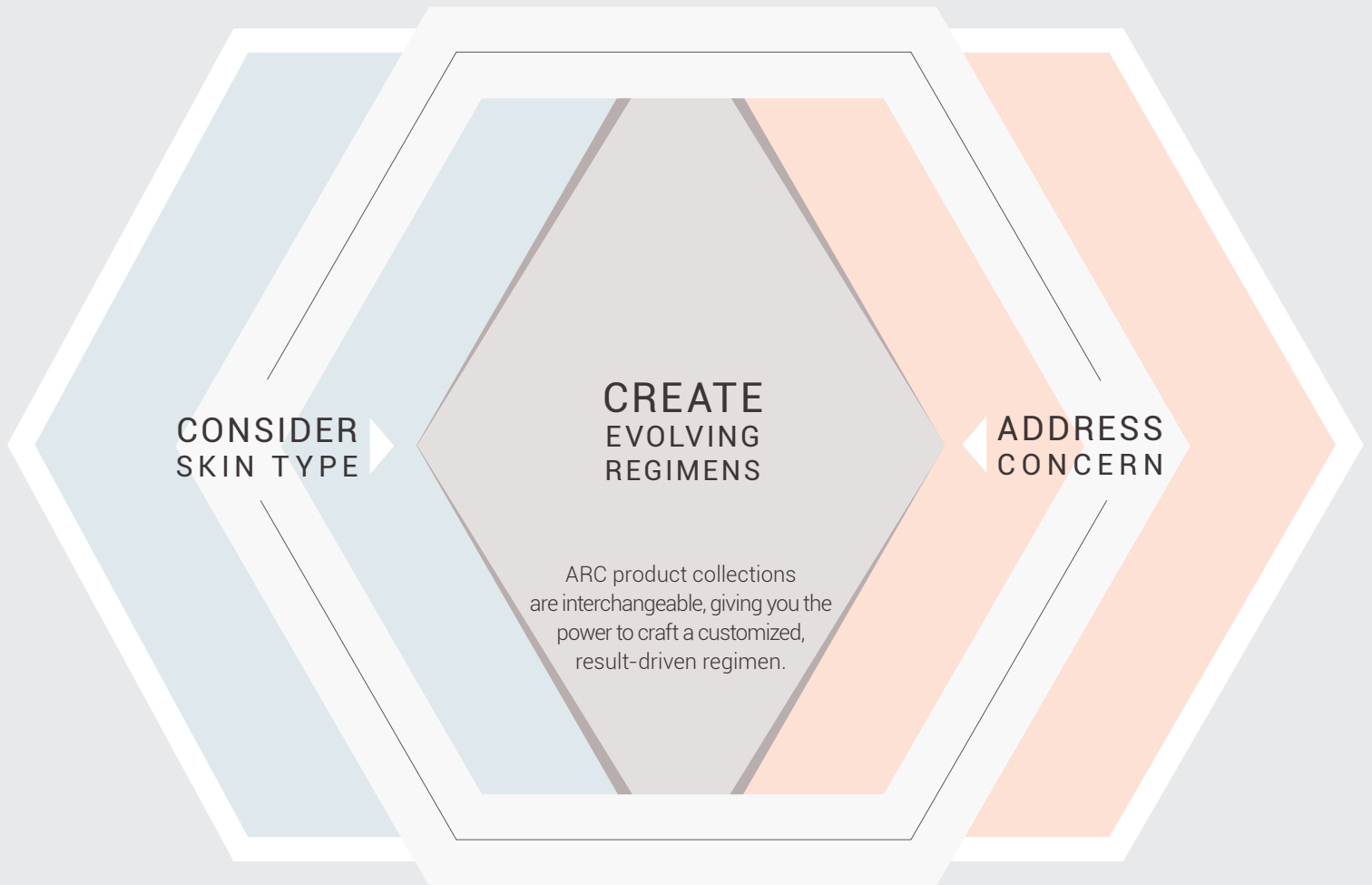
IDEAL FOR: All Skin Types

SIZE: 2 fl oz

DETAILS

- Soothes and hydrates
- Antioxidant infused
- Sheer application
- Hypoallergenic
- Weightless, fast-absorbing
- Paraben and fragrance free
- Free from phthalates, PABA and Oxybenzone

CRAFTING A REGIMEN WITH SKIN BIOLOGY AND AGE-RELATED CHANGES IN MIND



5 SKIN TYPES

Normal
Combination
Oily Skin
Dry Skin
Sensitive

5 SKIN CONCERNS

Aging [Lines, Wrinkles, Laxity]
Acne [Clarity, Breakouts]
Enlarged Pores
Hyperpigmentation
Rosacea

Learn more about skin typing and education at arcskincare.com or call 800 689-0499 to talk with a certified representative about product recommendations.

Advanced Collections

SKIN TYPING & PRODUCT PAIRING

Based on our background in aesthetics, we've created five collections, each tailored to common skin concerns our clients face everyday. Decades of hands-on experience in skin have gone in to choosing these regimens, while respecting the fact that skin changes over time, and the "one-size" approach to a regimen does not always work.



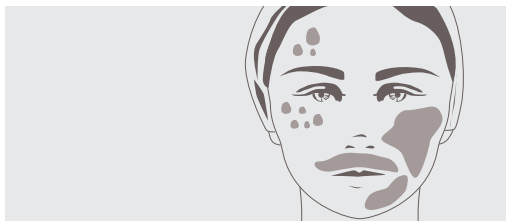
CLINICAL

Balancing hydration, regeneration, and photoprotection, Clinical combats everyday aggressors from UV, pollution, and more, to restore radiance and vitality to the skin.



CELLULAR SOLUTIONS

A collection of premium products designed for maximum, noticeable results over time. This range addresses multiple signs of aging and promotes radiant skin.



HYPERPIGMENTATION

Highly effective solutions for discolorations caused by sun damage, hormonal shifts, and scars, these products are interchangeable with any skin care regimen.



ENERGIZE YOUR SKILLS

Designed for aestheticians who want to become leaders in their trade, Advanced Rejuvenating Concepts workshops offer all levels of education and hands-on practice to develop new skill sets and build on the expertise you already have.

From essential skin typing and ingredients, to advanced peel, needling, and laser procedures, our team of educators have workbooks, step-by-step protocols, and webinars that will build on your knowledge as a professional.

ADVANCED AESTHETICS & LASER ACADEMY

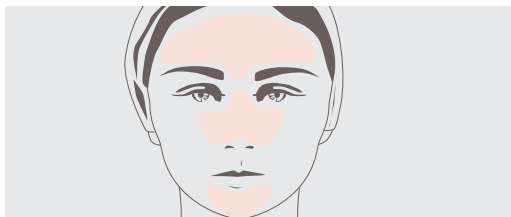
SAN ANTONIO, TEXAS
arcskincare.com/pages/AALA
Tina Zillmann, LE, CLHRP

BOISE, IDAHO
aestheticsacademyofidaho.com
Marti Hutchinson, LME, CLT, C-PMU



OILY SKIN / ACNE

Clarify, smooth texture, clear clogged pores, reduce oil, and prevent future breakouts—this regimen is customizable for max benefits with minimal irritation.



COMBINATION

Commonly referred to as t-zone, combination skin types need balance to promote clear skin and prevent dehydration or over-drying with oil-control products.



SENSITIVE / ROSACEA

A collection of products that harness the power of pure pumpkin to gently exfoliate, neutralize redness, improve tone and texture, and restore optimal barrier functions for healthy skin.

Clinical

FOR ALL TYPES OF SKIN DAMAGE

TEXTURE SMOOTHING & BRIGHTENING

CLINICAL skin care paired with ARC Professional delivers beautiful results!



BEFORE

AFTER

14-day Clinical home care routine and microneedle facial treatment with Rest-N-Restore and EGF Syntheserum.



BEFORE

AFTER

14-day combined Clinical and Cellular Solutions home care routine and Blue Enzyme Peel treatment with Ultrasonic.





HOME CARE ROUTINE

Antioxidants, exfoliants and lipids contribute to the strength of collagen and elastin proteins, reduce inflammation, and improve barrier functions for resilient skin.



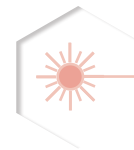
LIGHT AHA PEEL

Light skin peels, like our Pro-Glycolic, Pro-Lactic and Acid-Enzyme Blends, are preferred peels for improving damaged skin and maintaining resilient, glowing skin.



ULTRASONIC FACIAL

Hydrates, improves texture, firmness, and elasticity—with or without peels. Infuse hydration and antioxidants into the skin while promoting lymphatic drainage.



LASER / IPL

Annual IPL Photofacials and light resurfacing treatments help maintain healthy looking skin, correct signs of sun damage, and prevent premature skin aging.



MORNING ROUTINE

CLEANSING

Fruityzyme Cleanser & Conditioner

SCRUB

[1-2 TIMES/WEEK]

Clinical Dermabuff or Revitalizing Scrub

VITAMIN C SERUM

High-Potent C

Opti-Renew Complex

HYDRATION BOOST

Rest-N-Restore

Ultra Hydrating Serum

MOISTURIZER

Advanced Recovery Cream

Advanced Shades

Beta-Carrot Cream

Regenerating Cream

EYE CREAM

Brightening Eye, Essential Eye or

Triple-Action Eye

SUNSCREEN

Sun Protectant



EVENING ROUTINE

CLEANSING

Fruityzyme Cleanser & Conditioner

MASK

Herbal Moisture Mask / Pore Refining Pumpkin

EYE CREAM

Brightening Eye

Essential Eye

Triple-Action Eye

CHEMICAL EXFOLIATION

[2-3 TIMES/WEEK GRADUATING TO NIGHTLY]

Pumpkin Cream

Rejuvenation 10

Resurfacing Peel Pads

Cranberry Exfoliating Peel

Retinol Pads 5x or 7.5x

RECOVERY

[AS-NEEDED DAILY]

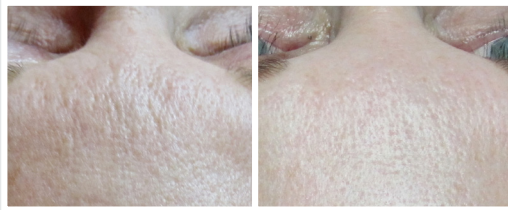
Post Peel Recovery Balm

Cellular Solutions

FOR MULTIPLE SIGNS OF AGING

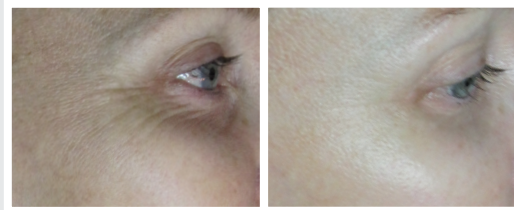
FIRMING & WRINKLE REDUCTION

CELLULAR SOLUTIONS skin care paired with ARC Professional delivers beautiful results!



BEFORE

AFTER



BEFORE

AFTER

14-day home care routine with ARC Clinical & Cellular Solutions, and one ARC Blue Enzyme Peel with Ultrasonic facial infusion of Rest-N-Restore HA Complex, Opti-Renew Complex, and Wrinkle Release.



BEFORE

AFTER



BEFORE

AFTER

14-day home care routine combined with ARC Clinical and Cellular Solutions, and microneedle facial treatment with ARC EGF Syntheserum.

14-day home care routine with ARC Clinical & Cellular Solutions, and one ARC Pro-Glycolic Peel with microdermabrasion facial treatment.





HOME CARE ROUTINE

Put peptides and growth factors to work. Science shows us they reverse signs of aging via new collagen and elastic tissue.



RX TOPICALS

Common meds include retinoids for firming and reversing signs of aging: Tretinoin, Retin-A, Renova.



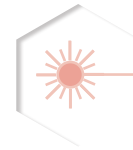
LIGHT AHA PEEL

Pro-Lactic or Blue Enzyme Peel, and Glycolic Peel: AHA's are preferred peels for influencing collagen synthesis and regeneration.



ULTRASONIC FACIAL

Hydrates, improves texture, firmness, and elasticity—with or without peels. Infuse with Rest-N-Restore with Opti-Renew.



LASER / IPL

Address aging skin with different technology. Brown and red discolorations, age spots, laxity, lines and wrinkles can all be improved.



MORNING ROUTINE

CLEANSING

Phyto-Soothing Cleanser

SCRUB

[1-2 TIMES/WEEK]

Clinical Dermabuff or Revitalizing Scrub

VITAMIN C SERUM

Mega C Complex

TARGET LINES

Wrinkle Release

Clinical Rest-N-Restore

MOISTURIZER

Phyto-DMAE Cream

Renew Cream

Refirm Peptide Cream

Clinical Advanced Shades

EYE CREAM BOOSTER

Contour Eye Gel - Layer with Essential Eye

LIP PLUMPING

Luscious Lips or Lip Renewal

SUNSCREEN

Sun Protectant Broad Spectrum SPF 30



EVENING ROUTINE

CLEANSING

Phyto-Soothing Cleanser

MASK

24k Lifting Gold Mask

EYE CREAM BOOSTER

Contour Eye Gel - Layer with Essential Eye

GLYCOLIC EXFOLIATION

[2-3 TIMES/WEEK GRADUATING TO NIGHTLY]

Clinical Rejuvenation 10

Clinical Resurfacing Peel Pads

Clinical Cranberry Exfoliating Peel

RECOVERY

[AS-NEEDED DAILY]

Clinical Post Peel Recovery Balm

Hyperpigmentation

FOR BRIGHT, EVEN-TONED SKIN

FADING DISCOLORATION

HYPERPIGMENTATION skin care paired with ARC Professional delivers beautiful results!



BEFORE

AFTER

Both melasma and sun damaged skin benefits with a pre-prep. Add Lighten More, Lighten Bar, and Melanin Cleanser to any daily regimen. These results were achieved after 14 days of product use and a series of three facials with Glycolic Peel and microderm.



BEFORE

AFTER

Sun damaged skin with a pre-prep regimen including Lighten More and Melanin Cleanser for faster lightening results. Results achieved after 14 days of product use and one microneedle facial with light skin peel.





HOME CARE ROUTINE

Skin lighteners, vitamins and tyrosine inhibitors reduce discolorations and age spots while preventing future dark spots.



RX TOPICALS

Common meds include retinoids for regeneration, Hydroquinone bleaching creams, or compounded/blended pharma.



LIGHT AHA PEEL

Pro-Lactic Peel, Glycolic Peel or Salicylic Peel: Light skin peels promote regeneration and accelerate lightening and toning results.



TECHNOLOGY FACIAL

Traditional microderm with light skin peels and microneedle with growth factors improve skin tone and complexion.



IPL PHOTOFACIAL

Address both red and brown pigmented lesions, and visibly lightens discolorations. Maintain results with home care.



MORNING ROUTINE

CLEANSING

Lighten Cleansing Bar
Clinical Fruityzyme or Clearifying Toner

SCRUB

[1-2 TIMES/WEEK]
Clinical Dermabuff or Revitalizing Scrub

MASK

[2 TIMES/WEEK]
Cellular Solutions 24k Lifting Gold Mask
Clinical Herbal Moisture Mask

VITAMIN C SERUM

Clinical High-Potent C
Clinical Opti-Renew Complex

MOISTURIZER

Clinical Beta-Carrot Cream
Clinical Regenerating Cream

EYE CREAM

Clinical Brightening or Essential Eye

SUNSCREEN

Sun Protectant Broad Spectrum SPF 30



EVENING ROUTINE

CLEANSING

Melanin Cleanser
Clinical Fruityzyme Conditioner
Oily Skin/Acne Clearifying Toner

TARGET LINES

Cellular Solutions Wrinkle Release
Clinical Rest-N-Restore

EYE CREAM

Clinical Brightening Eye
Clinical Essential Eye

NIGHTTIME BRIGHTENING

Lighten More
Rebright Pads

MOISTURIZER

Clinical Beta-Carrot Cream
Clinical Regenerating Cream

RECOVERY

[AS-NEEDED DAILY]
Post Peel Recovery Balm

Oily Skin / Acne

FOR ALL TYPES OF SKIN DAMAGE

TEXTURE SMOOTHING & BRIGHTENING

OILY SKIN / ACNE skin care paired with ARC Professional delivers beautiful results!



BEFORE

AFTER

14-day home care routine with Clarifying Wash and Toner, and Resurfacing Peel Pads. Extraction facials and coaching sessions scheduled every 2-weeks.



BEFORE

AFTER

Home care routine with Clarifying Wash and Toner, and Blemish Control treatment. Extraction facials and coaching sessions scheduled every 2-weeks.





HOME CARE ROUTINE

Improve barrier function, control oil, and reduce inflammation and breakouts. Monitor skin changes: book extraction facials every 2 weeks.



RX TOPICALS

Common meds systemic doxycycline, isotretinoin or minocycline, topical tretinoin, adapalene or tazarotene, azelaic acid, or clindamycin.



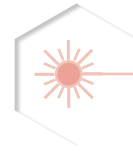
LIGHT SKIN PEEL

Pro-Salicylic Peel, Glycolic Peel or Clearifying Peel: hydroxy acids are preferred peels for clients who suffer from acne. Schedule every 4 weeks.



TECHNOLOGY FACIAL

Ultrasonic hydrates, and assists with extractions. Microderm resurfaces and delivers oil control. Both help improve skin immunity with circulation.



IPL PHOTOFACIAL

Address redness, inflammation, and breakouts, and alleviates inflammatory cystic acne. Schedule every 3 months.

OIL CONTROL FOR COMBINATION SKIN

- Focus on balancing oil without over-drying
- Fruitzyme Cleanser and Clearifying Toner
- Dermabuff or Revitalizing Scrub
- UltraLite Lotion or Rest-N-Restore
- Clearing Complex or Cranberry Peel
- Spot treat with Blemish Control 5%

CYSTIC ACNE CONSIDERATIONS

- Alternate the use of Clearifying Wash with Blemish Control Wash to prevent sensitizing skin and BPO dependence.
- Use Clearifying Lotion to hydrate and combat the drying effects of Blemish Control.
- Resurfacing 10/2% Pads and Blemish Control Treatment exfoliate and combat infection and congestion.



MORNING ROUTINE

CLEANSING

Clearifying Cleanser & Toner**
Clear Skin Cleansing Bar (face/body)
Lighten Cleansing Bar (melasma/scars)

SCRUB [1-2 TIMES/WEEK]

Clinical Dermabuff Exfoliant

OIL CONTROL

Clearing Complex or Resurfacing 10/2% Pads

MOISTURIZER

Clearifying Lotion**
Clinical Rest-N-Restore

EYE CREAM

Clinical Brightening Eye or Triple-Action Eye

SUNSCREEN

Sun Protectant**



EVENING ROUTINE

CLEANSING

Clearifying Cleanser & Toner
Clear Skin Cleansing Bar (face/body)
Blemish Control 5%/10% Wash**

MASK

Clinical Herbal Moisture Mask**

EYE CREAM

Clinical Brightening Eye**
Clinical Triple-Action Eye**

OIL CONTROL

Clearing Complex
Resurfacing 10/2% Pads**

SPOT TREATMENT

Blemish Control 5%/10% Treatment**
Lighten More (melasma/scars)

**Recommended for cystic acne skin care routines.

Sensitive / Rosacea

REDNESS RELIEF & TEXTURE SMOOTHING

Advanced Rejuvenating Concepts formulations go above and beyond to help protect the skin and prevent inflammatory triggers.

PUMPKIN POWER - Aside from enzymatic exfoliation and texture smoothing, pumpkin has an extraordinary diverse composition of nutrients for our skin:

FATTY ACIDS	TOCOPHEROLS	MINERALS
PHYTOSTEROLS	CAROTENOIDS	STEROLS

These have the ability to boost regeneration, help increase collagen density, and provide excellent healing and repair capabilities to the skin. Perfect for skin types concerned with inflammation and premature aging of the skin.

Made with time-tested, biogenic ingredients, and free from colors, synthetic fragrances and more, Sensitive/Rosacea products deliver the multi-action benefits your clients needs to reduce redness and smooth texture—simply result-driven.





HOME CARE ROUTINE

Improve barrier function and soften texture, while helping reduce redness and prevent inflammatory triggers.



RX TOPICALS

Common meds include systemic doxycycline, isotretinoin or minocycline, topical metronidazole, azelaic acid, sulfur or cortisone.



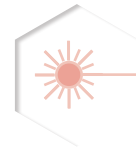
LIGHT AHA PEEL

Pro-Lactic Peel 30% and Pumpkin Peel 30%: alpha hydroxy acids are preferred peels for clients who suffer from sensitivity.



ULTRASONIC FACIAL

Hydrates, improves texture, and assists with extractions— with or without peels. Infuse with Rest-N-Restore with Advanced Repair Serum.



IPL PHOTOFACIAL

Address redness and capillary damage, and alleviates visible signs of rosacea. Schedule every 3 months.

VISIBLE SIGNS OF ROSACEA

- Redness & flushing associated with triggers
- Capillary damage or telangiectasia
- Stinging/sensitivity to environment or topicals
- Skin thickening around the nose
- Bumps or acne with sensitivity or redness
- Eye irritation with skin signs

TYPES OF SKIN SENSITIVITIES

- VERY SENSITIVE: Reactive to triggers.
- SENSITIZED/REACTIVE: Strong inflammatory response.
- ENVIRONMENTAL: Occasional flushing.
- DELICATE: Sensitive, but not responsive.



MORNING ROUTINE

CLEANSING

Pumpkin Cleanser & Conditioner
Phyto-Soothing Cleanser

REDNESS RELIEF

Advanced Repair Serum

MOISTURIZER

Beta-Carrot Cream
Advanced Recovery Cream

SUNSCREEN

Sun Protectant



EVENING ROUTINE

CLEANSING

Pumpkin Cleanser & Conditioner
Phyto-Soothing Cleanser

NIGHT CREAM

Pumpkin Cream

RECOVERY

[AS-NEEDED DAILY]
Post Peel Recovery Balm

Revolutionizing Results

WITH PRO-REJUVENATION PEELING

Personalized therapy creates an elite experience with remarkable results—and clients are asking for it. With Advanced Rejuvenating Concepts, you take the reins and give each individual the opportunity to relax and unwind as you deliver the best facial experience for their skin.

SMART, SIMPLE, EFFECTIVE REJUVENATION

It all starts with our Signature Rejuvenation Facial, an elite experience that empowers aestheticians with the flexibility to choose peel solutions based on your client's skin type and concern, without having to memorize complicated steps or a specific protocol for every peel. The Signature Rejuvenation Facial Protocol is the foundation to all Advanced Rejuvenating Concepts procedures and an integral part of creating and maintaining healthy, beautiful looking skin at any age.

ENHANCED PEEL BLENDS

Power peeling, brightening, and smoothing with Advanced Rejuvenating Concepts Professional Blended Peels. Dual-action peeling rejuvenates at the cellular level by diminishing lines, softening scars, building collagen, and brightening discolorations—and they come in different strengths.

With our modern clinical formulations you have the power to choose the best peel solution and strength for your client's skin, delivering a safe and beneficial result.

MD SKIN PEELING

Chronic skin damage needs rapid rejuvenation. Advanced Rejuvenating Concepts Medium-Depth Peels maximize results with a layered treatment that targets advanced signs of aging, sun damage, and superficial scars—for a fraction of the cost of laser procedures. Advanced Rejuvenating Concepts MD Peels are formulated with clinically-proven actives that encourage the skin to look and act younger over time.

Once they touch the skin, Advanced Rejuvenating Concepts MD Peels work-down to the papillary dermis to lift and detach superficial layers and encourage sheet peeling and sloughing. Over a seven-to-ten day period a more radiant, brighter and receptive skin is revealed.



PRO-GLYCOLIC PEEL

15% - 2.8 PH | 30% - 2.5 pH

The gold standard of peel treatments, this peel exfoliates and triggers living cells to multiply—increasing hydration and collagen synthesis to help skin look and feel younger.

Fructooligosaccharides [FOOS] a potent source of prebiotics, helps enhance the skin's microbiome and is a natural hydrator.

PRO-LACTIC PEEL

30% - 1.9 pH

Hydrating and texture-refining, this peel naturally increases skin hydration, improves suppleness, and diminishes signs of skin aging.

Phenyl-t-Butylnitron [Spin Trap], Ginkgo + D-Beta Carotene, a potent source of antioxidants and anti-inflammatory agents to improve visible sign of aging.

PRO-SALICYLIC PEEL

20% - 2.0 pH

A comedolytic and bacteriostatic solution, Salicylic Peel frosts to lift-away skin cells and release blocked pores. It also constricts pores to prevent future breakouts, PIH and scarring.

Lactobacillus/Clover Flower Ferment boosts peel absorption and eliminates the need for a degreasing prep for oily skin types.

BLUE ENZYME PEEL

30% LACTIC - 2.0 pH
BROMELAIN ENZYMES

Dual-action exfoliation with a stimulating stem cell mélange, Blue Enzyme Peel is designed to rejuvenate the skin by diminishing lines, softening wrinkles, building collagen, and brightening discolorations.

CITRUS-C PEEL

30% GLYCOLIC - 1.5 pH
CITRIC ACID + LEMON

Invigorating and brightening peel, Citrus-C triggers activity in the skin, to improve visible signs of sun damage, melasma, and age spots—and for a fraction of the cost of tech-based procedures.

PUMPKIN PEEL

30% GLYCOLIC - 2.0 pH
PUMPKIN ENZYMES + PHA

Formulated with sensitivity and rosacea skin concerns in mind, this unique blended formula targets textural concerns, actively reduces redness and inflammation, and boosts matrix support for improved skin health.

REBRIGHT PEEL

14% JESSNER BLEND
2% HYDROQUINONE

For clients who want to peel, Rebright Peel targets sun damaged skin, discolorations and scars with a clinical mid-depth peeling jessner blend of lactic acid, salicylic acid and resorcinol.

TEXAS RUBY PEEL

14% JESSNER BLEND
12% WINE EXTRACT + LYCOPENE

Collagen-boosting jessner formula to target lines, wrinkles, discolorations, uneven skin tone, and enlarged pores. Texas Ruby Peel spans into the papillary dermis and encourage flushing and light frosting.

A+ RETINOL PEEL

18% RETINOL BLEND
28% ACETIC ACID + AHA

Created as a post-microderm peeling solution, A+ Retinol Peel encourages rapid regeneration of the skin with light skin peeling to improve the look of sun damaged skin, discolorations, lines and wrinkles, and acne scars.

Call Toll Free 800 689-0499

Sales@ARCSkinCare.com

ARCSkinCare.com

133 Pecan Drive

Schertz, Texas 78154

