



## Mount on all terrains, in no time.

The IronRidge Ground Mount System combines our XR1000 rails with locally-sourced steel pipes or mechanical tubing, to create a cost-effective structure capable of handling any site or terrain challenge.

Installation is simple with only a few structural components and no drilling, welding, or heavy machinery required. In addition, the system works with a variety of foundation options, including concrete piers and driven piles.



### Rugged Construction

Engineered steel and aluminum components ensure durability.



### PE Certified

Pre-stamped engineering letters available in most states.



### UL 2703 Listed System

Meets newest effective UL 2703 standard.



### Design Software

Online tool generates engineering values and bill of materials.



### Flexible Architecture

Multiple foundation and array configuration options.



### 25-Year Warranty

Products guaranteed to be free of impairing defects.



360° Product Tour  
Visit [ironridge.com](http://ironridge.com)

## Substructure

### Top Caps



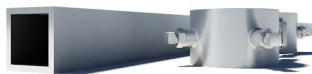
Connect vertical and cross pipes.

### Bonded Rail Connectors



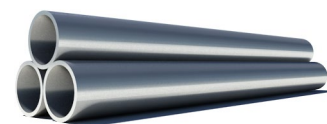
Attach and bond Rail Assembly to cross pipes.

### Diagonal Braces



Optional Brace provides additional support.

### Cross Pipe & Piers



Steel pipes or mechanical tubing for substructure.

## Rail Assembly

### XR1000 Rails



Curved rails increase spanning capabilities.

### UFOs



Universal Fastening Objects bond modules to rails.

### Stopper Sleeves



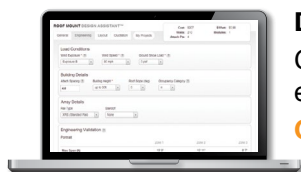
Snap onto the UFO to turn into a bonded end clamp.

### CAMO



Bond modules to rails while staying completely hidden.

## Resources



### Design Assistant

Go from rough layout to fully engineered system. For free.

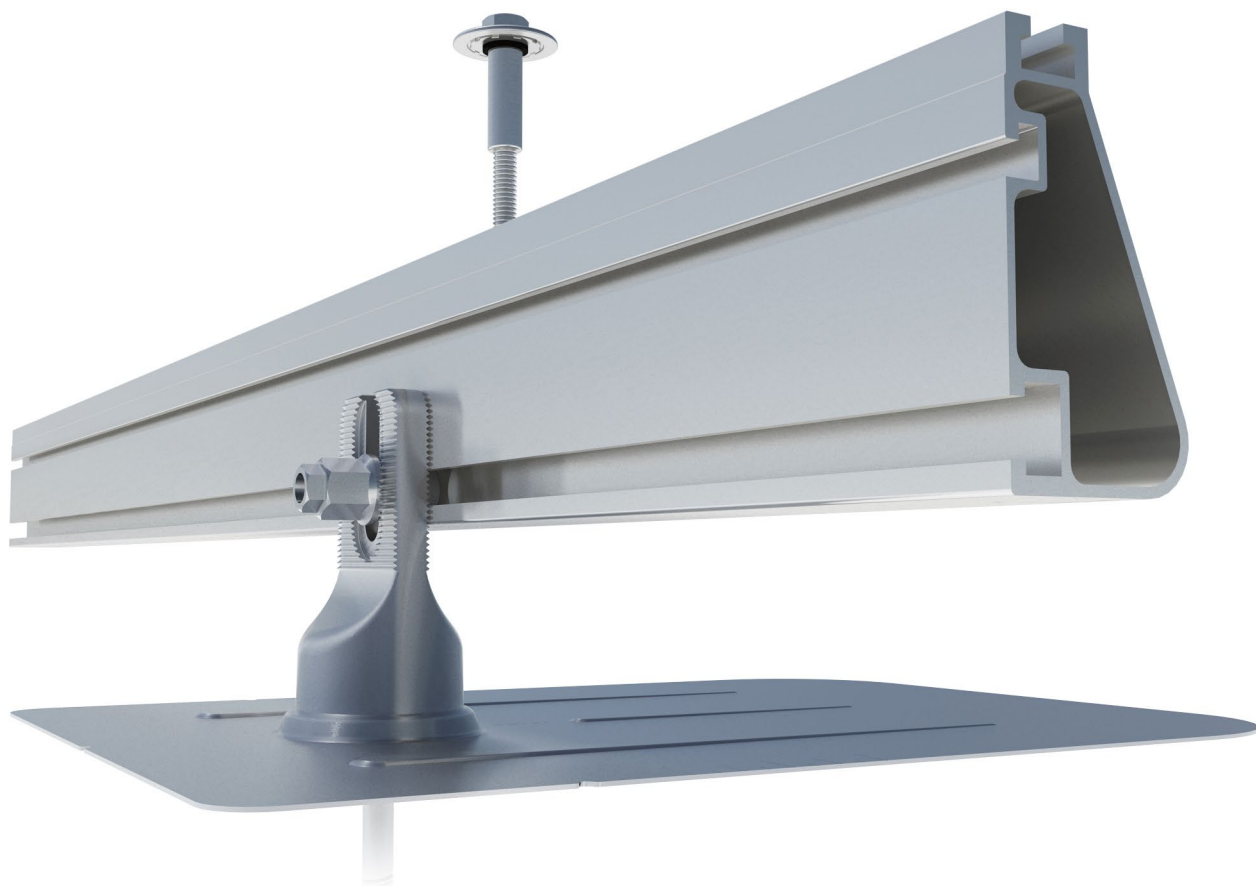
Go to [ironridge.com/design](http://ironridge.com/design)



### NABCEP Certified Training

Earn free continuing education credits, while learning more about our systems.

Go to [ironridge.com/training](http://ironridge.com/training)



### Built for solar's toughest roofs.

IronRidge builds the strongest mounting system for pitched roofs in solar. Every component has been tested to the limit and proven in extreme environments.

Our rigorous approach has led to unique structural features, such as curved rails and reinforced flashings, and is also why our products are fully certified, code compliant and backed by a 20-year warranty.



#### **Strength Tested**

All components evaluated for superior structural performance.



#### **PE Certified**

Pre-stamped engineering letters available in most states.



#### **Class A Fire Rating**

Certified to maintain the fire resistance rating of the existing roof.



#### **Design Assistant**

Online software makes it simple to create, share, and price projects.



#### **UL 2703 Listed System**

Entire system and components meet newest effective UL 2703 standard.



#### **25-Year Warranty**

Products guaranteed to be free of impairing defects.

**XR Rails** ☺

**XR10 Rail**



A low-profile mounting rail for regions with light snow.

- 6' spanning capability
- Moderate load capability
- Clear and black finish

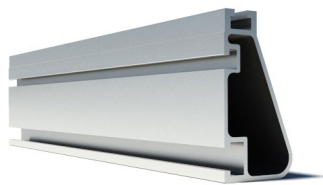
**XR100 Rail**



The ultimate residential solar mounting rail.

- 8' spanning capability
- Heavy load capability
- Clear and black finish

**XR1000 Rail**



A heavyweight mounting rail for commercial projects.

- 12' spanning capability
- Extreme load capability
- Clear anodized finish

**Bonded Splices**



All rails use internal splices for seamless connections.

- Self-drilling screws
- Varying versions for rails
- Forms secure bonding

**Clamps & Grounding** ☺

**UFOs**



Universal Fastening Objects bond modules to rails.

- Fully assembled & lubed
- Single, universal size
- Clear and black finish

**Stopper Sleeves**



Snap onto the UFO to turn into a bonded end clamp.

- Bonds modules to rails
- Sized to match modules
- Clear and black finish

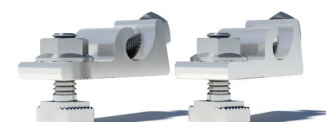
**CAMO**



Bond modules to rails while staying completely hidden.

- Universal end-cam clamp
- Tool-less installation
- Fully assembled

**Grounding Lugs**



Connect arrays to equipment ground.

- Low profile
- Single tool installation
- Mounts in any direction

**Attachments** ☺

**FlashFoot2**



Flash and mount XR Rails with superior waterproofing.

- Twist-on Cap eases install
- Wind-driven rain tested
- Mill and black finish

**Conduit Mount**



Flash and mount conduit, strut, or junction boxes.

- Twist-on Cap eases install
- Wind-driven rain tested
- Secures 3/4" or 1" conduit

**Slotted L-Feet**



Drop-in design for rapid rail attachment.

- Secure rail connections
- Slot for vertical adjusting
- Clear and black finish

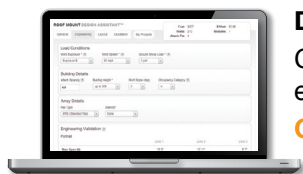
**Bonding Hardware**



Bond and attach XR Rails to roof attachments.

- T & Square Bolt options
- Nut uses 7/16" socket
- Assembled and lubricated

**Resources**



**Design Assistant**

Go from rough layout to fully engineered system. For free.

[Go to IronRidge.com/design](http://IronRidge.com/design)



**NABCEP Certified Training**

Earn free continuing education credits, while learning more about our systems.

[Go to IronRidge.com/training](http://IronRidge.com/training)



### Trust your system at every angle.

The IronRidge Tilt Mount System supports a wide range of solar module tilting angles, while also resisting the extreme wind and snow forces experienced over a building's lifetime.

Every component has been carefully engineered and rigorously tested, and the entire system uses only aluminum and stainless steel materials to resist corrosion.



#### **Roof Friendly**

Lightweight and compatible with industry-standard attachments.



#### **PE Certified**

Pre-stamped engineering letters available in most states.



#### **Strength Tested**

All components evaluated for superior structural performance.



#### **Design Assistant**

Online software makes it simple to create, share, and price projects.



#### **UL 2703 Listed System**

Meets newest effective UL 2703 standard.



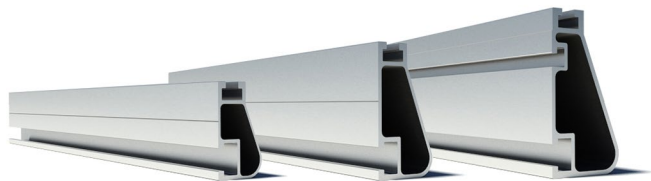
#### **25-Year Warranty**

Products guaranteed to be free of impairing defects.



## XR Rails & Tilt Legs

### XR Rails



Attach directly to Tilt Legs. Available in three targeted sizes to support specific wind and snow loads.

- Unique curved profile
- Spanning capabilities up to 12'
- Clear and black finish

### Tilt Legs ☺



Tilt assembly to desired angle, up to 30 degrees. Kits include South and North Tilt Leg and all hardware.

- Available in multiple lengths for a wide angle range
- Assembled South Tilt Legs include angle indicators
- Legs are electrically bonded to rails

## Grounding Clamps

### UFOs ☺



Universal Fastening Objects secure and bond modules to rails.

- Fully assembled and lubricated
- Single, universal size
- Clear and black finish

### Stopper Sleeves ☺



Snap onto the UFO to transform into a bonded end clamp.

- Bonds modules to rails
- Sized to match modules
- Clear and black finish

### CAMO ☺



Bond modules to rails while staying completely hidden.

- Universal end-cam clamp
- Tool-less installation
- Fully assembled

## Accessories

### Bonded Splices ☺



XR Rails use internal splices for seamless connections.

- Self-drilling screws
- Varying versions to match rails
- Forms secure bonding connection

### Grounding Lugs ☺



Connects Tilt Mount system to equipment ground.

- Low profile
- Single tool installation
- Mounts in any direction

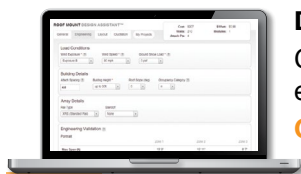
### Ends Caps & Wire Clips



Provide a finished look and organize electrical wires.

- Simple snap-in installations
- Clips hold up to ten 5mm wires
- UV-stabilized polymer

## Resources



### Design Assistant

Go from rough layout to fully engineered system. For free.

[Go to IronRidge.com/design](https://IronRidge.com/design)



### NABCEP Certified Training

Earn free continuing education credits, while learning more about our systems.

[Go to IronRidge.com/training](https://IronRidge.com/training)