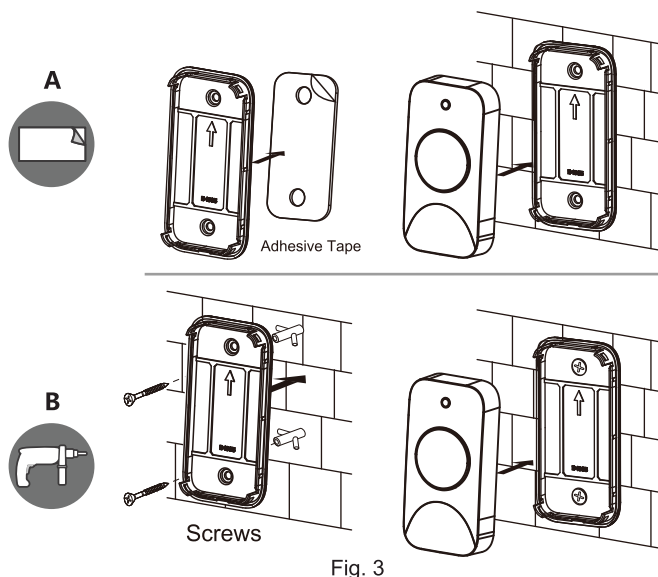
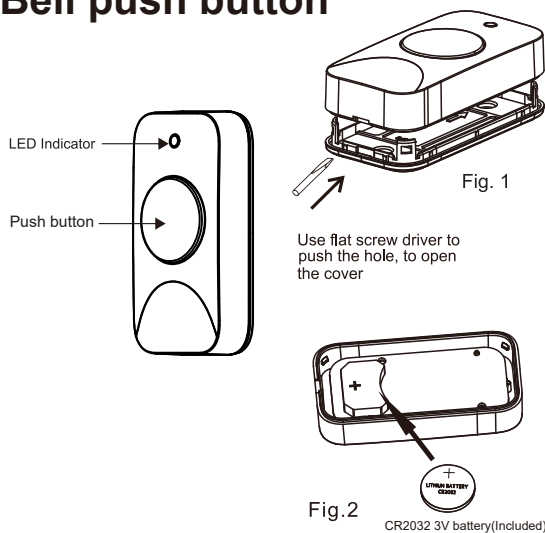


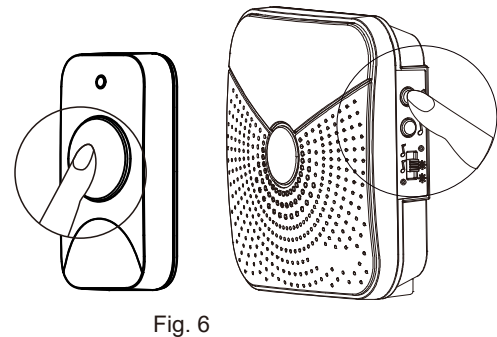
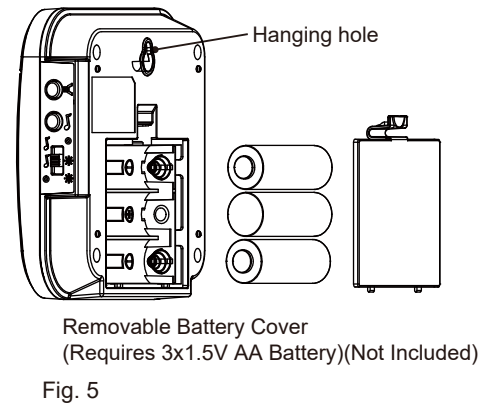
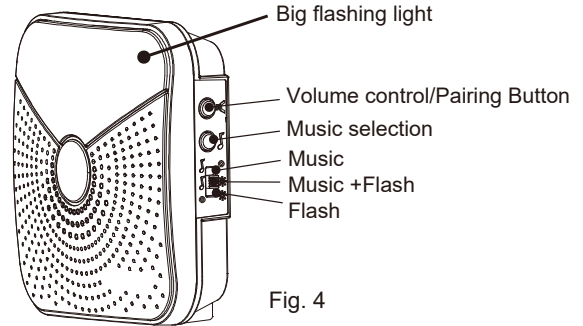
Features:

1. Battery-Operated Wireless doorbell.
2. 32 sounds for selection.
3. Big flashing light on the receiver.
4. Receiver with volume control.
5. 300ft. operating range in open air.
6. Self-learning technology avoid interference.
7. Bell push button is with LED and is waterproof.
8. Different bell push buttons can play a different sound on the same receiver.

Bell push button



Receiver unit



How to Pair/Select favorite sound

This bell push button and receiver have already been paired. If your doorbell is not working properly, follow the 3 steps below to reset the product (see figure 6). **Troubleshooting tips are on the next page.**

1. Clear the pairing codes inside the receiver. First, press and hold the "Volume control button" (see figure 6), then install the final battery into the battery compartment. Continue to hold the button for about 8 seconds. You will then see the receiver's LED flashing. Release the button and the codes are all removed from the internal memory.
2. Pair the bell push and receiver again. Press and hold the "Volume control button" on the receiver for about 4 seconds, and release the button until you hear "Ding-Ding" sound. Select your favorite sound (see figure 4) then press the bell push button. When you will hear the receiver play the selected sound, you press the "Volume control button" to exit pairing mode.
3. Press the bell push button and test if pairing is completed.

Troubleshooting

A. Chime does not sound:

Check orientation of the transmitter battery and batteries for the receiver (see figures 1, 2 and 5).

Check charge of transmitter battery and batteries for the receiver. Replace if necessary.

Ensure that the transmitter and receiver are paired correctly.

B. Batteries seem OK, but the chime does not work when installed:

Do not mount transmitter on metal or near metal studs. This reduces the transmitter range. Use 1/4" to 1/2" (6 to 13mm) wood shims to move push button off metal surface.

Concrete floors may reduce range. Move receiver away from floor.

Try locating the receiver closer to the transmitter.

Questions? Please contact us at
cs@adamaxinc.com