

TWO NOTE MECHANICAL DOOR CHIME

Installation Instructions and Drill Template
Read and save these Instructions.

The non-electric chime mounts directly through the door and will accommodate door thicknesses of 3/8" to 2".

Step No. 1 (From outside of door)

- Place template (you may cut it out) on the **outside** of the door, locating hole "C" approximately 58" from the finished floor.

Be sure template is parallel to edge of door.

- Pilot drill holes "A" and "D" on the template using 3/32" diameter drill.
- Drill 2 hole "B"s with a 3/32" diameter drill, approximately 1/4" deep.
- Remove template.
- Drill holes "A" and "D" through door with 3/32" diameter drill.
- Drill hole "A" through - 3/8" diameter drill.
- For Viewer drill hole "C" through - 9/16" diameter drill

Step No. 2 (From inside of door)

- Remove cover from chime base. (see "To Remove Cover")
- Place chime base (mechanism down) on inside of door. Align raised guide on flat side of chime base into previously drilled 3/8" diameter hole "A" (see Fig. A).

Be sure base is parallel to edge of door.

- Drill 3 holes (#1, #2 & #3 - see Fig. D) through base with a 3/32" diameter drill, approximately 1/4" deep.
- Mount Chime Base using 3 #6 x 3/8" screws provided.

Step No. 3 (see Fig. A, Fig. B, Fig. C and Fig. D)

- Pull hinge pin downward (to just below slot in hinged lever) to enable actuating shaft to pass through hinged lever.
- From outside of door, insert actuating shaft with button through 3/8" diameter hole and hinged lever.
- Remove the shaft of the viewer by turning it counter-clockwise.
- Place face plate over push button and mount using 2 #6 x 3/8" screws provided.

- Re-insert the shaft of the viewer by turning it clockwise. Tighten with a coin. The viewer should be flush with the door and snug.

- From inside of door, push the actuating shaft outward, so that the button projects as far as possible through faceplate. While holding the shaft in this position, press upward on hinge pin, rotating pin away from the base so that the end of the pin engages into nearest hole on the shaft. Push hinge pin upward to limit stop.

Chime installation is now completed. Press and release push button. Both tones should sound satisfactorily.

Step No. 4

- Adjustment** - If adjustment is required, the hinged lever must be bent as shown in Fig. D. Use the tip of a screwdriver to bend Prong "A" or "B" forward or backward as required.

Step No. 5

- Break off excess of actuating shaft at score line closest to hinge pin.
- Attach cover to chime base (see below).

To Remove Cover

- Hold chime base (cover-slotted end up) with finger through large hole
- Grasp lower end of cover with other hand, pull downward and tilt lower end away from base.

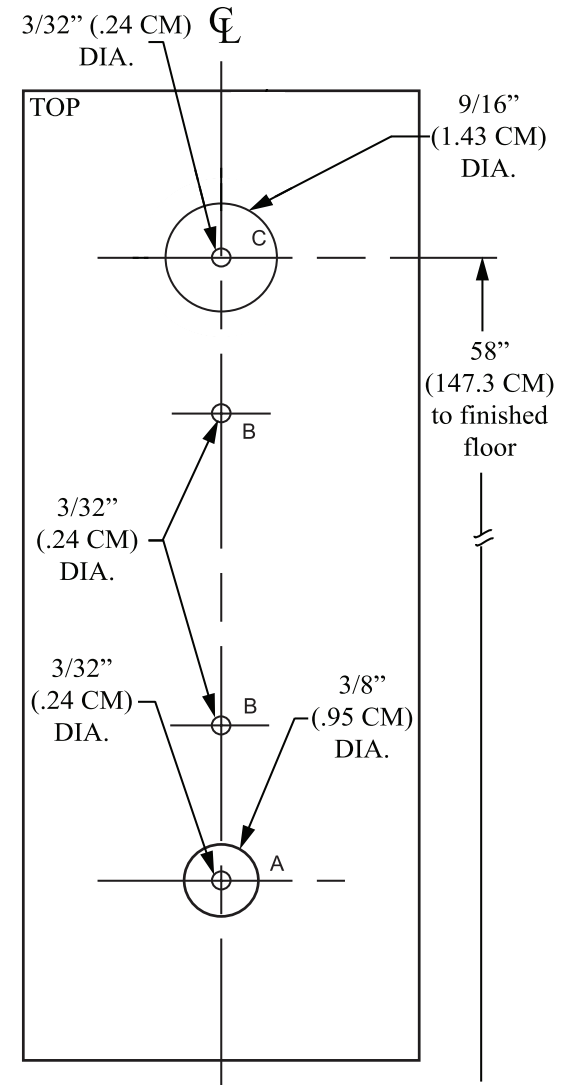
To Attach Cover

- Place cover over chime base
- Engage long tab into open slot.
- Tilt cover towards base until short tab engages into blind slot.

To Reverse Cover Slide Direction

- Remove cover (see above).
- Remove rubber bumper from inside of cover and move the bumper to the mounting base on the opposite end.
- Remove spring and reinstall it on the mounting pegs opposite those on which it was originally mounted.
- Replace cover (see above).

Model MC145S / MC145B



Illustrations may vary from actual
chime unit.

