

Contessa II
seconda



okamura

A true icon lasts. A true icon evolves.

Since 2002, Contessa has set the standard for seating in office spaces around the world.
Now, she is reborn as Contessa Seconda.

Contessa Seconda unites the flowing,
organic lines and charm of the original with new engineering and functionality.
With more color options for the mesh, fabric, and frame.
All to meet the demands of the modern work style.

Contessa Seconda is the evolution of an icon — for the workplace of today, and of tomorrow.

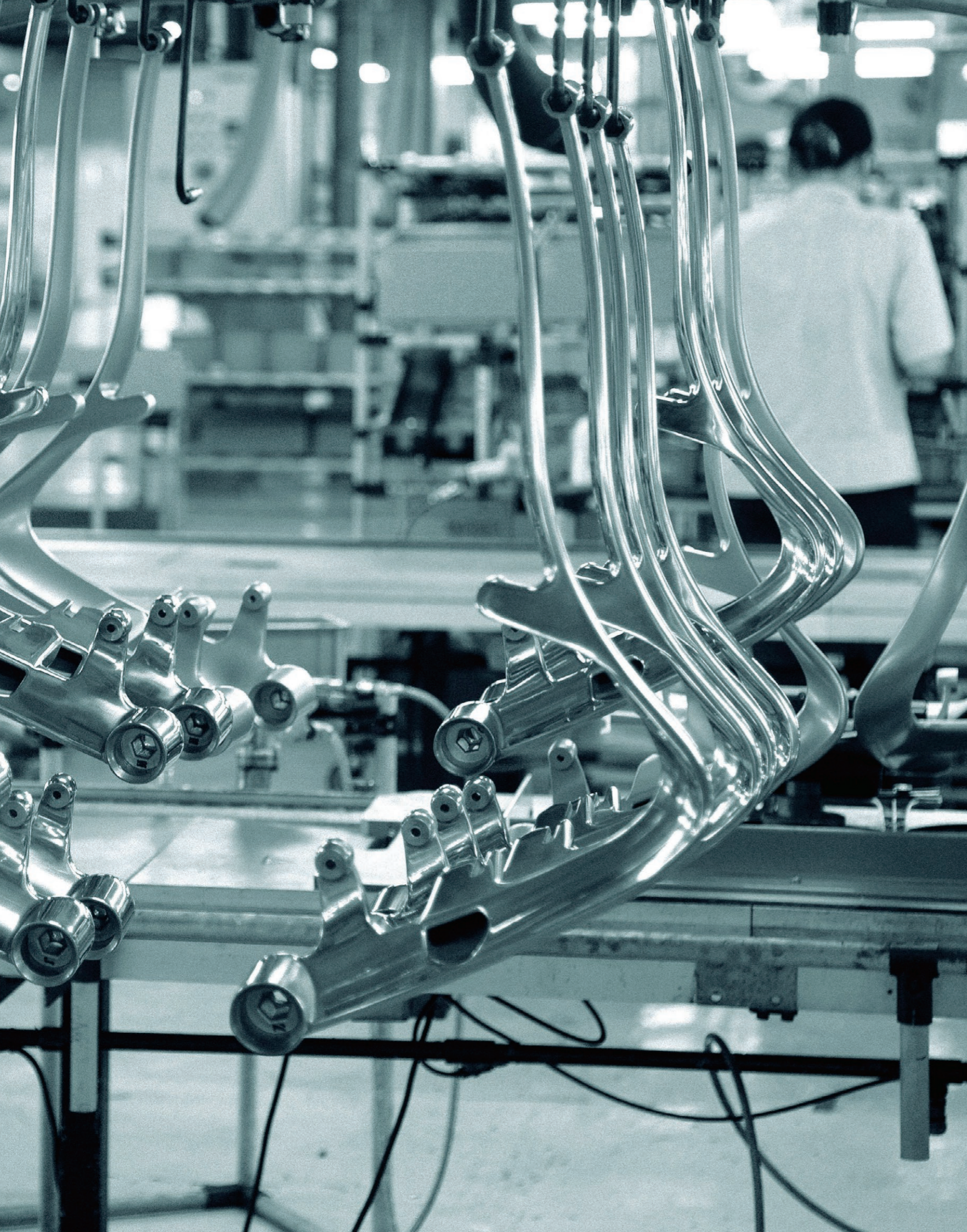
Contessa II seconda



The Industrial Design Division of ITALDESIGN, headquartered in Moncalieri, Torino – Italy, was established in 1981 and today is one of the most renowned and leading organizations in the industrial design field on a worldwide level.







A classic, re-imagined.

Four design principles led the upgrade of this iconic chair:

1 Engineered for modern offices

Built to new strength standards,
to meet the requirements of today's task chairs.

2 Personal comfort

Okamura leverages its world-renowned technology
for comfort and a superb fit to every body.

3 New colors and frame options

Available in an exciting, industry-leading yet refined palette.
A white frame option is also newly available.

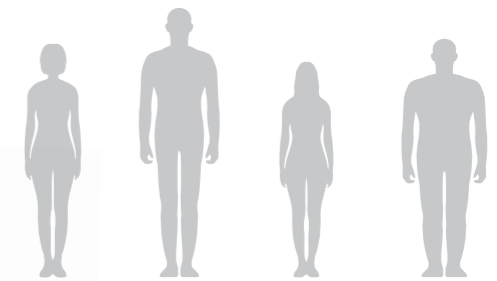
4 Extended line-up for any space

The full range of Contessa Seconda caters to conference rooms,
meeting areas, touch-downs, and task applications.



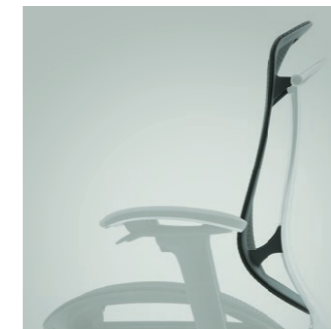
The perfect fit.

Contessa Seconda is engineered for any body type, delivering world-class strength to all.





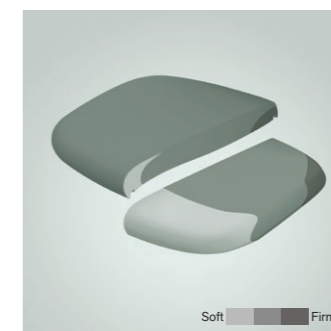
Luxury evolved. So has Contessa.



The backrest frame has been streamlined to create a slimmer aesthetic, with an increased flexibility that gently follows the natural movement of the body — without any sacrifice of support.



For added stability, the mesh seat frame is now constructed in a one-piece ring structure with soft edges, ensuring improved weight-distribution and comfort.



Okamura's unique Multiple Density Cushion utilizes three types of urethane foam, of varying firmness layered together, to promote healthy sitting. The cushion provides softer support at the front of the seat, reducing pressure on the thighs for improved circulation; denser cushioning at the back firmly supports the hips for stability and improved posture.



Smart operation, now in 4-D.



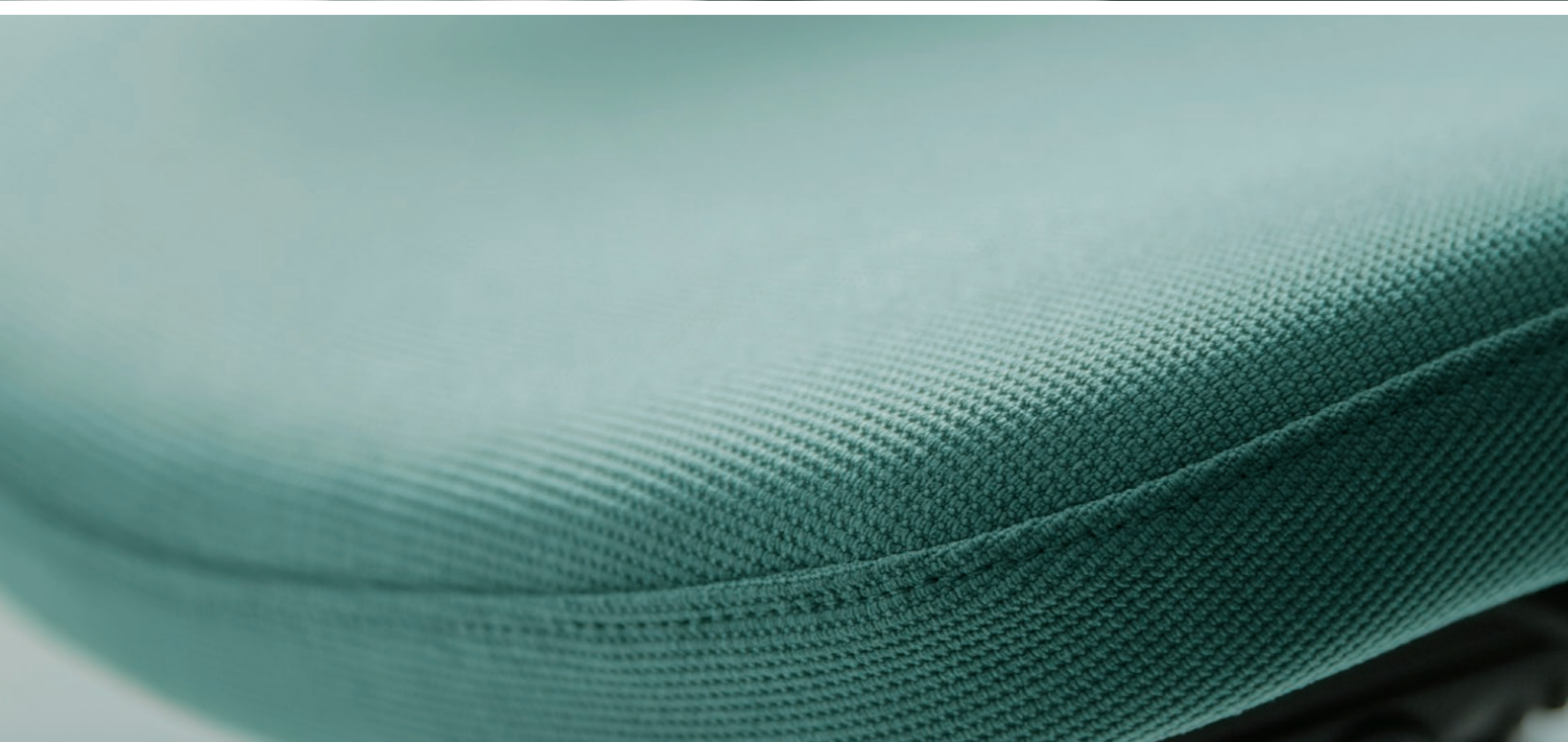
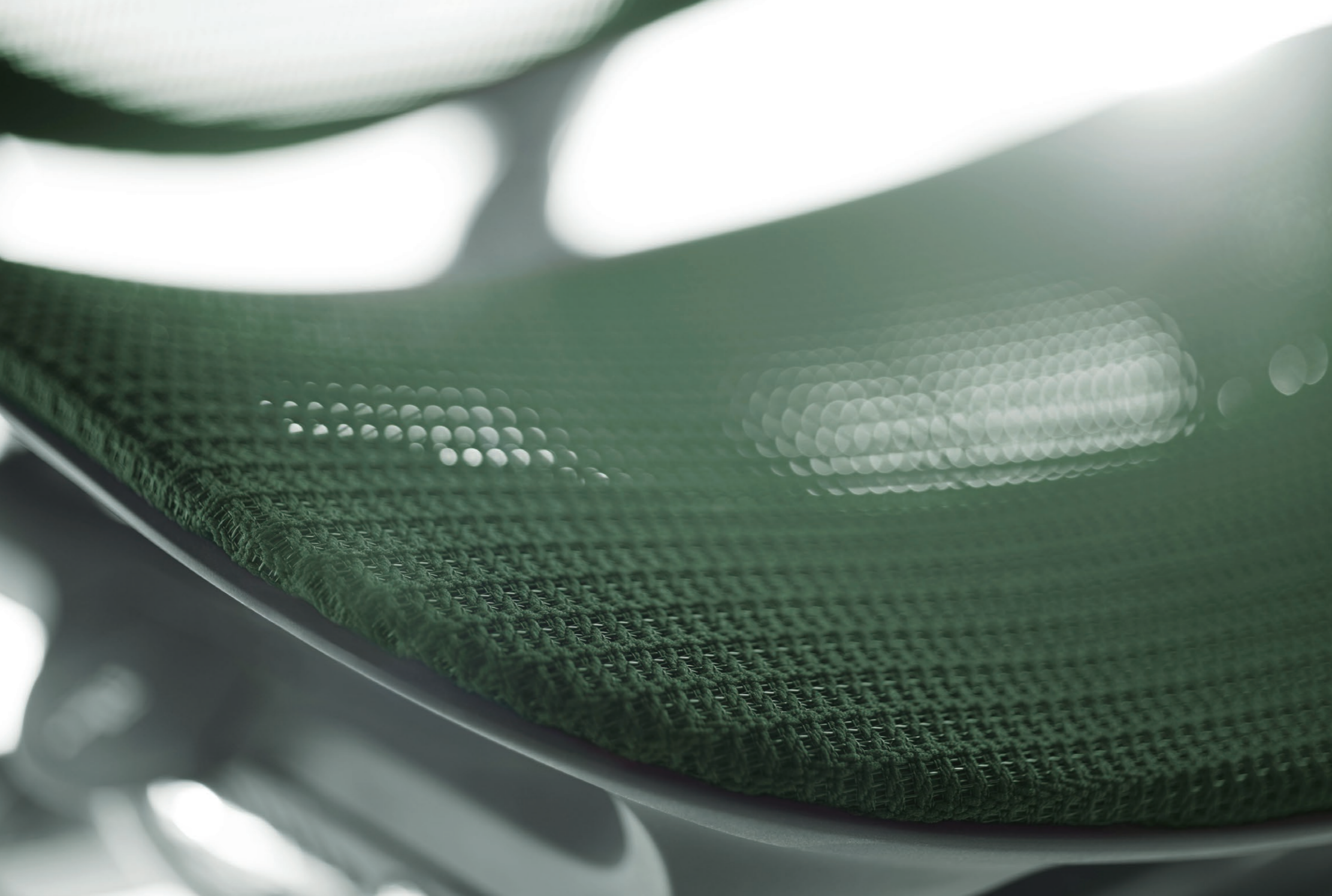
Smart Operation

Adjust your entire seating experience with a touch of your fingertips. Lock and unlock the backrest, alternating between a free recline and one of five pre-set tension gradations — all using a lever in the left armrest. Adjust the chair height, within a range of 435 to 545 mm, using a lever in the right armrest.



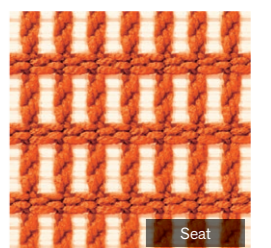
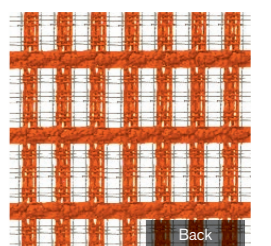
Adjustable Arms

Adjustable arms can be adjusted in four dimensions: height, depth, width, and angle — enabling the most comfortable elbow support for the various tasks at hand.



Mesh, made even more beautiful.

For years, Okamura has made beautiful, tactile mesh for its seating by intertwining luxe-touch and stretchable, strong threads. Contessa Seconda features an upgraded mesh, that is more permeable and lighter in weight for the backrest, and a new luxe-touch mesh for the seat. Modern colors and a new white-frame option make it even easier to coordinate with a wide variety of spaces.



More options for today's workspaces.



Contessa Seconda elevates the look and feel of any office environment.



Contessa II × PROCEED

An ergonomic task chair that harmonizes with any workspace.



Contessa II × traverse

Variations

Chair types



5-Star Swivel

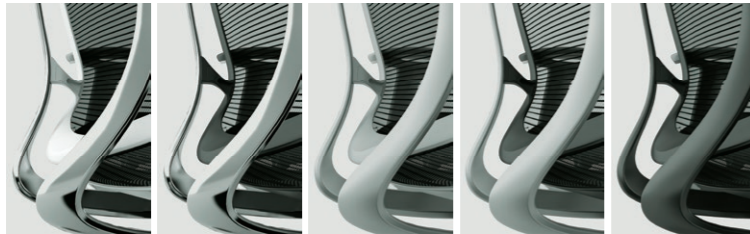
High Stool

4-Star Auto-return

Meeting Chair

Cantilever Chair

Color options for frame and body



Frame	Polished	Polished	Silver	Silver	Black
Body	White	Black	Gray	Black	Black

Armrest types



Adjustable Arms

Fixed Arms

Seat types



Cushion

Mesh

Armpad types



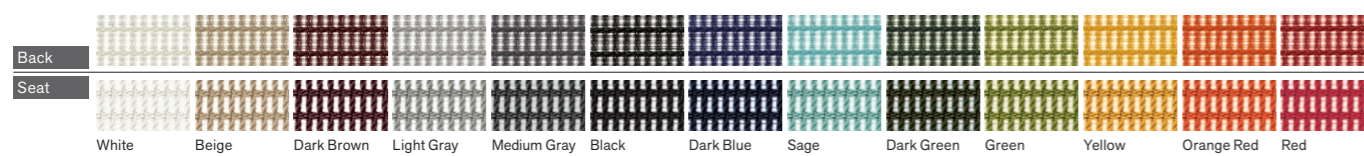
Regular Armpad

Leather Armpad

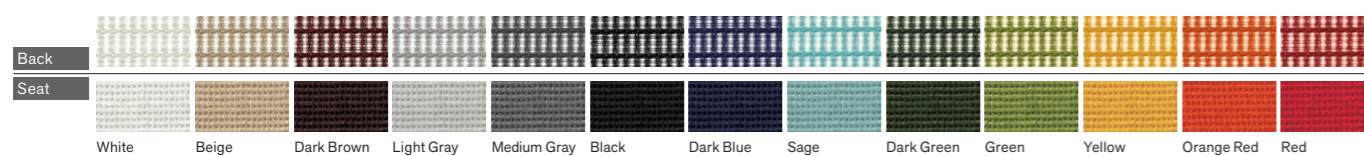
* For Models with Leather Back

Mesh & Fabric Colors

Models with Mesh Back and Mesh Seat



Models with Mesh Back and Cushion Seat



Models with Mesh Back and Leather Seat

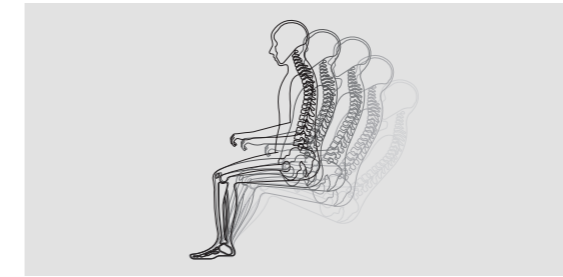


Models with Leather Back and Leather Seat



Functions

Ankle-Tilt Reclining



An ankle-tilt mechanism enables anyone to find his or her most comfortable reclining position. Using the ankle as a pivot point, this mechanism moves in sync with the seat, for greater support – stimulating variation in posture and relaxation, with uninterrupted comfort.

Smart Operation Mechanism

A custom seating experience, at your fingertips.



Reclining Adjustment

Lock and unlock the backrest, alternating between a free recline and one of five pre-set tension gradations, all using the lever in the left armrest.



Seat Height Adjustment

Adjust the chair height, within a range of 435 to 545 mm, using the lever in the right armrest.



Seat Depth Adjustment

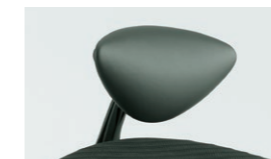
Adjustment of the seat's depth, within a range of 50mm, is available using the levers beneath the seat.



Reclining Tension Adjustment

Choose from four tension adjustment pre-sets to suit any body shape and posture – all from a dial under the seat.

Options



A small headrest option can be adjusted by height, depth, and angle, to create the perfect neck support.



Large, fixed headrests are elegant and wide, providing neck support especially while reclining.



Hangers are retro-fittable and compatible with both types of headrests.

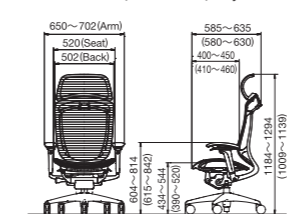


Lumbar support – available for retro-fit – is height adjustable for greater comfort (stroke 60mm).

Dimensions

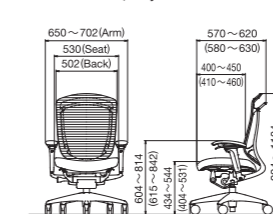
5-Star Swivel

Fixed Headrest / Mesh Seat / Adjustable Arms



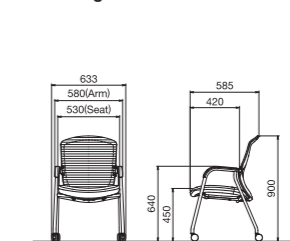
650~702(Arm)
520(Seat)
502(Back)
615~842
434~544
404~531
1109~1138
1109~1138

Cushion Seat / Adjustable Arms



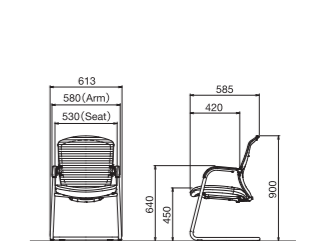
650~702(Arm)
530(Seat)
502(Back)
604~814
615~842
434~544
404~531
984~1104
1105~1132

Meeting Chair



633
580(Arm)
530(Seat)
640
450
585
420
900

Cantilever Chair



613
580(Arm)
530(Seat)
640
450
585
420
900

() = Dimensions in EN models

okamura