



# T8

## 10T8/COR/48-840/IF16/G/DIM 10/1

Our TLEDs are available in InstantFit (Type A / Type C) or MainsFit (Ballast bypass / Type B) versions. The InstantFit lamps work on a broad variety of ballasts and LED drivers. Only InstantFit has over 15,000 lamp & ballast combinations delivering even light output, energy savings and a long lifetime. Our MainsFit products feature a double-ended design, simplifying installation while a proprietary safety circuit minimizes a shock risk. Lamp sizes range from 2-foot to 8-foot and U-bend with a variety of lumen outputs.

### Product data

General information	
Base	G13 [ Medium Bi-Pin Fluorescent]
EU RoHS compliant	Yes
Nominal Lifetime (Nom)	70000 h
Switching Cycle	50000
Tier	CorePro
Light technical	
Color Code	841 [ CCT of 4100K (841)]
Beam Angle (Nom)	240 °
Initial lumen (Nom)	1600 lm
Color Designation	Cool White (CW)
Correlated Color Temperature (Nom)	4000 K
Luminous Efficacy (rated) (Nom)	160.00 lm/W
Color Consistency	<6
Color Rendering Index (Nom)	82
LLMF At End Of Nominal Lifetime (Nom)	70 %
Operating and electrical	
Input Frequency	25000-105000 Hz

Power (Rated) (Nom)	10 W
Lamp Current (Max)	260 mA
Lamp Current (Min)	100 mA
Wattage Equivalent	32-30-28-25 W
Starting Time (Nom)	0.5 s
Warm Up Time to 60% Light (Nom)	0.5 s
UL Type	Type A - works on ballast
Power Factor (Nom)	0.9
Voltage (Nom)	120-277, 347 V
Temperature	
T-Ambient (Max)	113 °F
T-Ambient (Min)	-4 °F
T-Storage (Range)	-40 °C to 65 °C
T-Storage (Max)	149 °F
T-Storage (Min)	-40 °F
T-Case Maximum (Nom)	122 °F

# T8

## Controls and dimming

Dimmable	Yes
----------	-----

## Mechanical and housing

Bulb Finish	Frosted
Bulb Material	Glass
Product Length	47-1/4 in
Bulb Shape	Tube, double-ended

## Approval and application

Energy Saving Product	Yes
Approval Marks	RoHS compliance UL certificate DLC compliance
Energy Consumption kWh/1000 h	- kWh

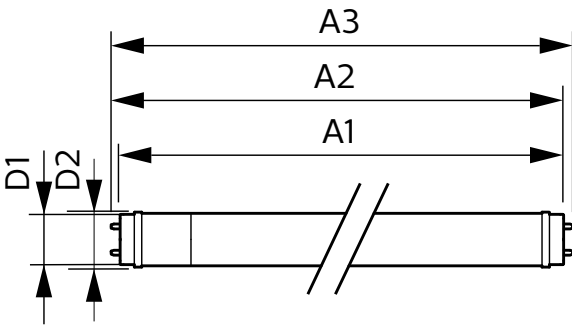
## Application conditions

Ambient temperature range	-20 °C to 45 °C
---------------------------	-----------------

## Product data

Order product name	10T8/COR/48-840/IF16/G/DIM 10/1
EAN/UPC - Product	046677553234
Order code	553230
Numerator - Quantity Per Pack	1
Numerator - Packs per outer box	10
Material Nr. (12NC)	929001991734
Net Weight (Piece)	0.507 lb
Model Number	9290019917

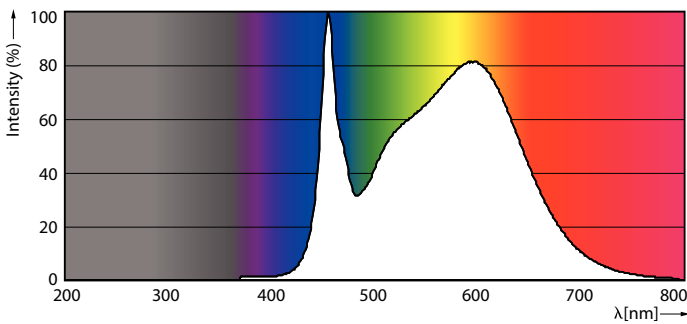
## Dimensional drawing



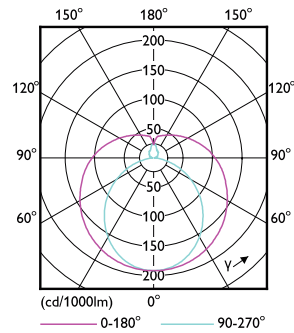
10T8/COR/48-840/IF16/G/DIM 10/1

Product	D1	D2	A1	A2	A3
10T8/COR/48-840/IF16/G/DIM 10/1	1-1/16 in	1-1/8 in	47-3/16 in	47-1/2 in	47-3/4 in

## Photometric data

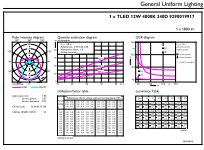


LEDtube 10W G13 840 ND



LEDtube 10W G13 840 ND

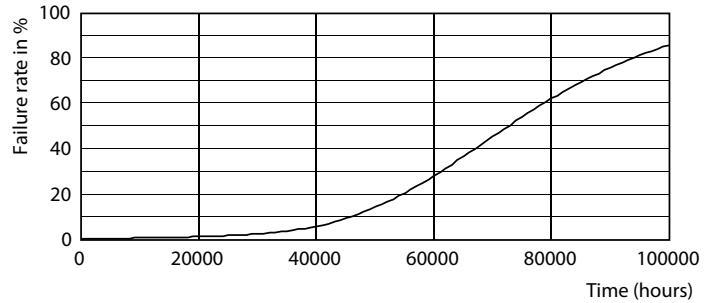
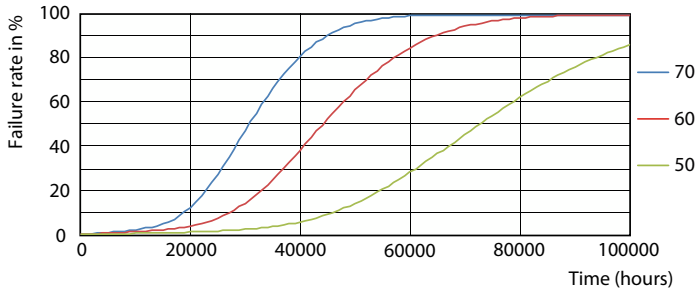
Photometric data



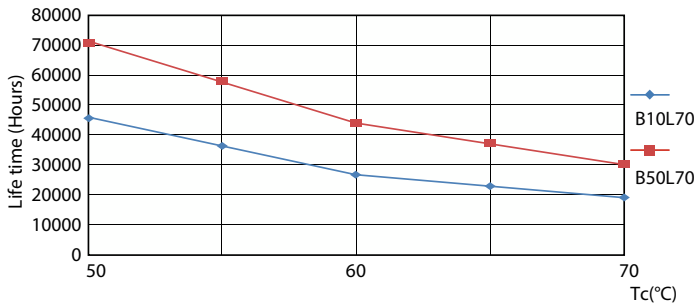
Technical Parameters 43 Page 17

LEDtube 10W G13 840 ND

Lifetime

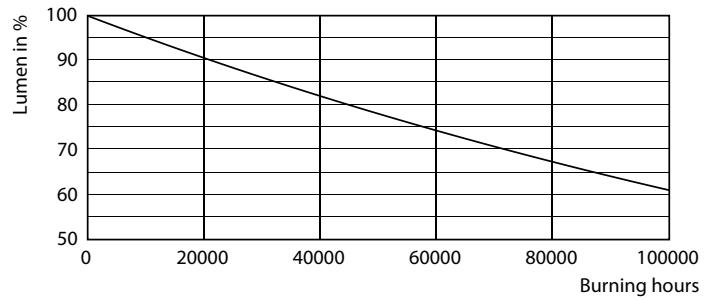


LEDtube 70K 5070 FailureRate-LED



LEDtube 70K 5070 LifetimeVsTc-LED

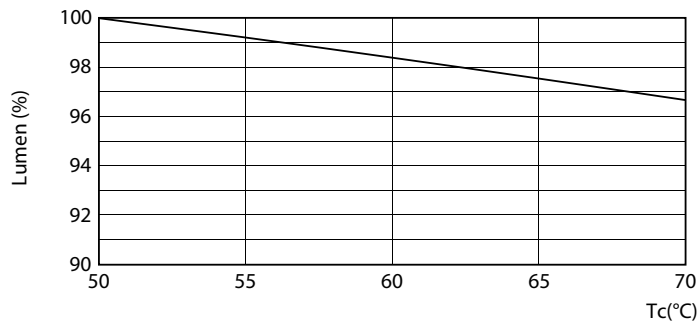
Life Expectancy Diagram



Lumen Maintenance Diagram

# T8

## Lifetime



LEDtube 10W G13 850 ND

