

# INSTALLATION INSTRUCTIONS



**K702E-2 and K701E-B**

**SIMPLSTAT**

**Thermostat**

**DANGER**

**ELECTRIC SHOCK OR FIRE HAZARD**

READ ALL WIRE SIZING, VOLTAGE REQUIREMENTS AND SAFETY DATA TO AVOID PROPERTY DAMAGE AND PERSONAL INJURY



**Specifications:**

**Power Supply:** K702E-2 SimplStat: 208/240 VAC  
K701E-B SimplStat: 120/208/240 VAC

**Power Consumption:** 7VA

**Max Range:** 1920W @120V (K701E-B only)  
3328 W @ 208 V(16A), 3840 W @ 240 V (16A)

**Temperature Display Range:** 32°F-122°F

**Temperature Display Resolution:** 1°F

**Temperature Control Range:** 41°F-95°F

**Temperature Adjustment Scale:** 1°F

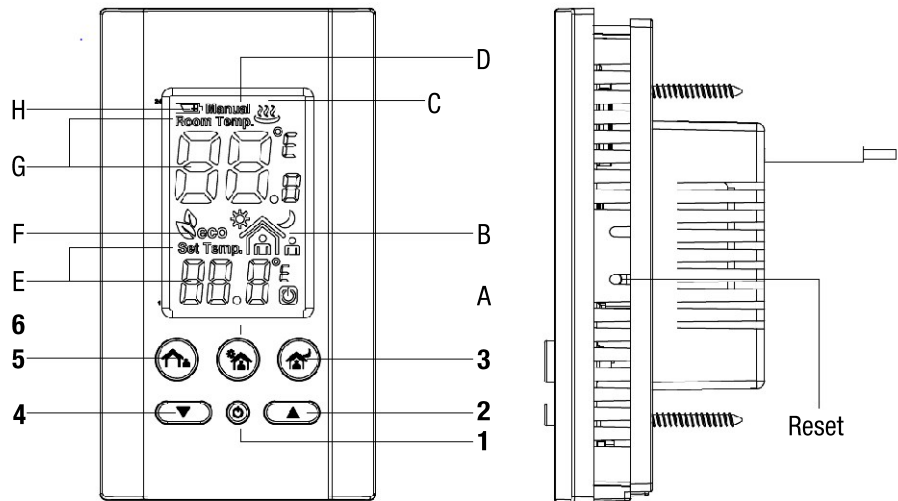
**Selectable Switching Differential:** 1°F~2°F

**Anti-Freeze** **Protection:** 41°F

**WARNING**

**READ CAREFULLY** - These instructions will help prevent difficulties that might arise during thermostat installation. Studying the instructions first may save considerable time and money later. Observing the following procedures will keep installation time to a minimum. Save these instructions for future use.

- |                   |   |
|-------------------|---|
| 1. Standby Button | A. Standby Indicator  |
| 2. Up Button      | B. Three Preset Temperature Icons<br><b>(See Preset Function)</b>                     |
| 3. Sleep Button   | C. Heat ON Indicator  |
| 4. Down Button    | D. Override Setting Icon<br><b>(See Manual Override Adjustment)</b>                   |
| 5. Away Button    | E. Preset Temperature Display   |
| 6. At Home Button | F. ECO mode Indicator<br><b>(Illuminates when operating with set temp under 62°F)</b> |
|                   | G. Room Temperature Display   |
|                   | H. Battery Low Indicator <b>(Only applicable to battery powered model K701E-B)</b>    |



**Product Overview**

The K702E-2 and K701E-B SimplStat series thermostats are designed to provide the highest level of accurate temperature control for residential line voltage electric heating in 208/240 VAC (120/208/240 VAC K701E-B model only). Almost all electric heaters installed as original equipment in a residential application will be 208 or 240 Volt. It is very rare that a home, apartment or condominium would be wired with all 120 Volt heaters. Check your voltage to make sure you have the right thermostat for your heater voltage. A 2-pole, or double wide circuit breaker, at the panel would indicate you should use the 240 Volt model. A single pole, or single wide breaker, would indicate a 120 Volt circuit. There are some exceptions to this rule, so checking with a voltmeter is the only way to know for sure.

**Be safe and smart, electricity can cause severe injury or death. If you are uncomfortable hire an electrician for the project.**

The thermostat will provide years of comfort control for your family for small fan driven electric heaters, baseboards, radiant ceiling, wall panel heaters, cove heaters, or any line voltage resistance heating systems that do not have an electric motor over 1/3 hp. The thermostat will be warm to the touch on top. This is normal operation and also provides air currents across the face of the thermostat that better help it sense room temperature.

## SAVE THESE INSTRUCTIONS

! DANGER !

ELECTRIC SHOCK OR FIRE HAZARD

READ ALL WIRE SIZING, VOLTAGE REQUIREMENTS AND SAFETY DATA TO AVOID PROPERTY DAMAGE AND PERSONAL INJURY

The installation of the thermostat must comply with the applicable local and/or national electrical code and utility requirements. This installation should be performed by a qualified electrician where required by law. Ensure that all wiring connections to the thermostat are correct and tight to prevent electrical shorts. Use the appropriate wire to meet local and national electrical codes for rated power consumption.

## INSTALLATION AND WIRING INSTRUCTIONS

**Warning:** Turn OFF the power at the circuit breaker before installing. Installation to be performed by a qualified electrician or authorized technician.

Refer to thermostat and heater load specifications before installation of the thermostat to see if it can handle the amp load. The maximum this thermostat can run is K702E-2: 3840W at 240 Volts, 3328W at 208 Volts. K701E-B: 1920W @120V, 3328W @ 208 V(16A), 3840W @ 240 V (16A)

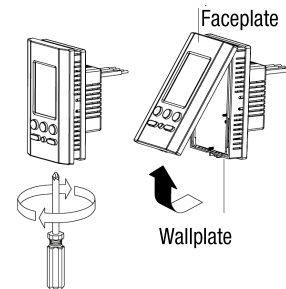
Install unit in a grounded metal or plastic wall junction box, indoors 4 1/2' to 5' above the floor. Avoid any area where it can come in contact with external sources of heat and cold. This includes plumbing pipes, direct sunlight, a T.V. set, lamps, and drafts from a door or window, as this may cause inaccurate temperature readings. The most convenient place is above the light switch. Not for Outdoor use.

## WIRING INSTRUCTIONS

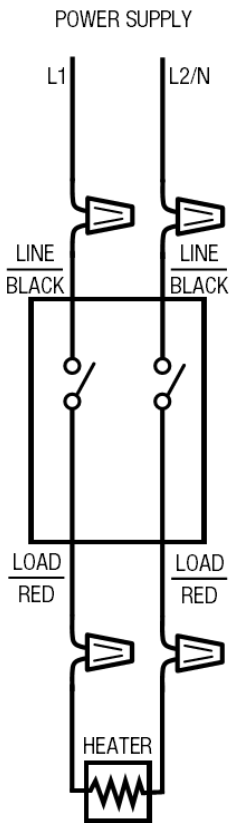
**Caution:** Turn off power at the circuit breaker before performing any work on the electrical connections. None of the electrical connections must be live until the installation has been completed and the housing is closed. Only a qualified electrician or authorized technician are permitted to open the terminal box.

### Wiring requires a Phillips screwdriver

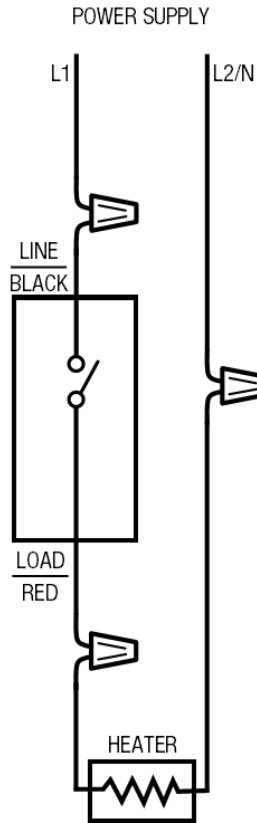
1. Disconnect power supply to prevent electrical shock or damage to the product.
2. Loosen screw on the bottom of plastic housing.
3. Run line voltage wiring to the location of thermostat.
4. Connect output terminals to heating system in accordance with instructions from the heating system.
5. Make sure your SimplStat thermostat is COMPLETELY RECESSED into the junction box and flush with the wall. NO WIRES SHOULD BE EXPOSED outside the metal or plastic junction box.



**K702E-2 Wiring Diagram**



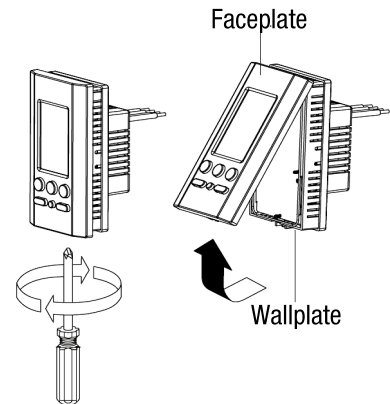
**K701E-B Wiring Diagram**



# OPERATION INSTRUCTIONS



## SIMPLSTAT Thermostat



## PRODUCT SETUP AND OPERATION

The SimplStat series thermostat is designed for simple operation, simply press the preset button that represents the current status of your home and the thermostat will automatically switch to the correct pre-defined preset temperature setting.

### Operation

#### Preset Function:

There are three preset temperature settings in the SimplStat:



Preset Type	Default Temperature
At Home	70°F (21°C)
Away	55°F (13°C)
Sleep	60°F (16°C)

#### Changing the Preset Temperature Settings:

1. Press the Preset Temperature you wish to change. The temperature will begin to Flash.
2. Press “Up” or “Down” arrow key to change the preset value.
3. Wait 3 seconds for the value to save. Temperature will stop Flashing.
4. New preset is now saved.

#### Manual Override Adjustment:

1. Press “Up” or “Down” arrow key and the LCD will show a flashing temperature with “Set Temp” symbol.
2. Proceed by pressing the “Up” or “Down” arrow key to set a desired temperature. Every time you press the “Up” or “Down” arrow key, the temperature will increase or decrease the temperature value by 1°F.
3. When you’ve completed setting the desired temperature, wait 3 seconds until the LCD stops flashing and the thermostat will start operation. When the room temperature reaches the desired setting, the thermostat will function to maintain the set temperature.

#### Advanced Settings—Temperature Compensation:

Sometimes your SimplStat digital thermostat may register “Room Temperature” higher than the actual temperature. You can adjust the registered value by using Temperature Compensation value.

1. Press and hold the “Up” and “Down” arrow keys at the same time for 5 seconds.
2. The initial value is 0°F. Press the “Up” or “Down” arrow key to adjust the value.
3. After adjustment value has been completed, do not press any keys, wait for 10 seconds until the display returns to normal operation.

#### Note:

The SimplStat series can only adjust the compensation downward by 18°F.

#### Reset your SimplStat :

In case your SimplStat is not functioning correctly, you can reset the unit back to the factory settings. Locate the RESET button on the right side of the unit, lightly press the button with a pointy object and the unit will reset.

# OPERATION INSTRUCTIONS




**SIMPLSTAT**  
Thermostat



## PRODUCT SETUP AND OPERATION

### Operation

#### Differential Setup:

1. Press and hold the “Up” and “Down” arrow keys at the same time for 5 seconds.
2. Press the Standby  key to get to the differential setup screen.
3. The initial value is (1°F). Press “Up” or “Down” arrow key to adjust. (1°F—4°F Range)
4. After finishing adjusting the value, do not touch any keys and wait for 10 seconds until the display returns to normal operation.

#### Reset your SimplStat:

In case your SimplStat is not functioning correctly, you can reset the unit back to the factory settings. Locate the Reset button on the side of the unit, lightly press the button with a pointy object and the unit will reset.

### Thermostat Dimensions

