

# Private Label Catalogue



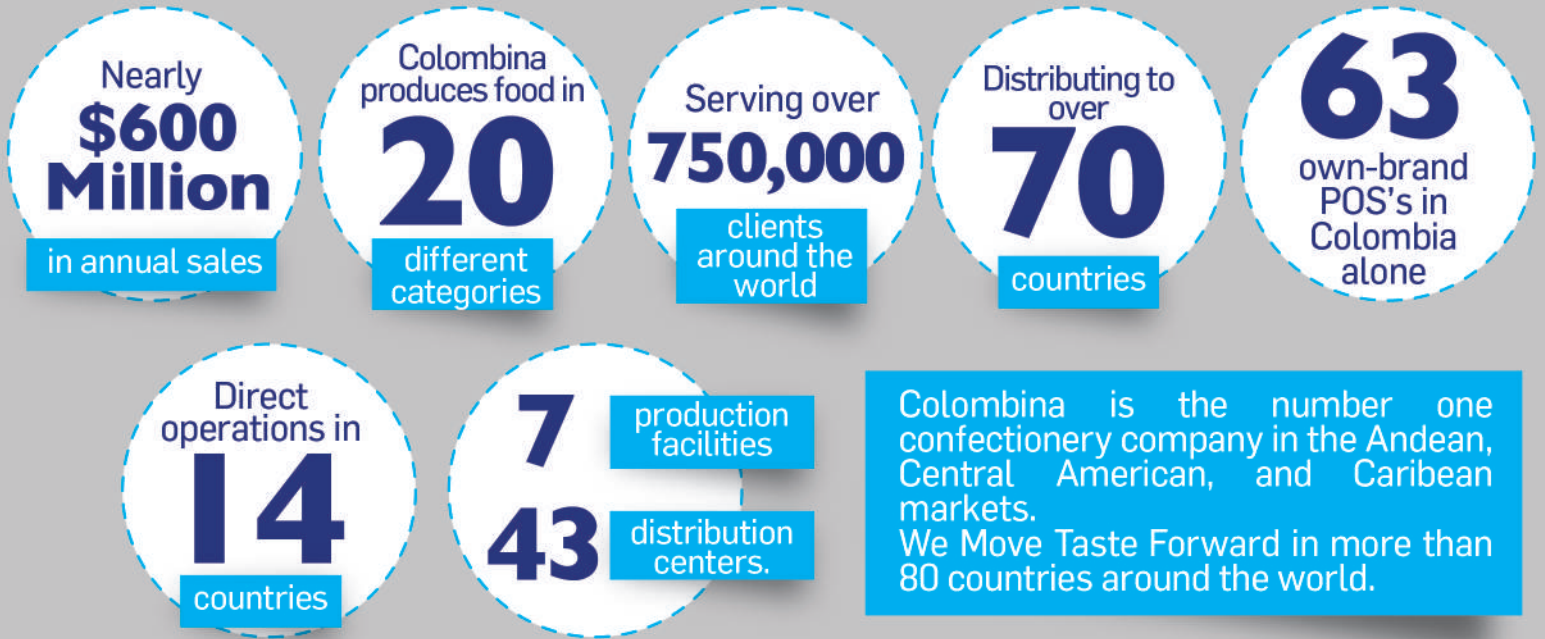
**Colombina**   
*Moving taste forward*





**Colombina is a global food company focus on captivating consumers with flavor and innovation.**

For over 90 years, Colombina has been crafting food under comprehensive transparent management guidelines.



## Sustainable Development

We are committed to our people and planet, fueling hope for a new generation.

COLOMBINA HAS GARNERED A FOOD INDUSTRY BRONZE CLASS DISTINCTION IN S&P'S (PREVIOUSLY STANDARD & POOR'S) 2021 SUSTAINABILITY YEARBOOK.

Colombina rose to bronze in S&P's sustainability yearbook for being one of the top sustainable companies in the food industry. Our 6 Sustainable Management Priorities follow a triple-bottom-line approach toward economic, social, and environmental balance while maximizing value for our stakeholders.

### Environmental Performance

- Efficient use of water
- Energy efficiency
- Climate change management
- Waste management and reduction
- Packaging strategy

### Social Development

- Education
- Culture
- Sports

### Fostering Competitiveness

- Relationships with suppliers and contractors
- Big Brother Program
- Quality and safety in production processes

### Our Employees

- Well-being at work and working conditions
- Health and safety
- Organizational development

### Transparency and Nutrition

- Improving the nutritional profile
- Offering innovative products
- Relationships with customers and consumers

### Economic efficiency and Continued Growth

- Financial Sustainability
- Corporate governance
- Risk management

# Production Plants



**La Paila**  
Confectionery

**Santander de Quilichao**  
Cookies & Crackers

**Tuluá**  
Sauces & Preserves

**Fiesta-Spain**  
Confectionery

**Capsa Guatemala**  
Confectionery

**Medellin Bogota**  
Ice Cream



**52,663**  
mt2 built

**58,597**  
mt2 built

**27,247**  
mt2 built

**12,794**  
mt2 built

**35,425**  
mt2 built

**7,200**  
mt2 built



**7,000**  
tons of capacity per month

**6,300**  
tons of capacity per month

**3,654**  
tons of capacity per month

**340**  
tons of capacity per month

**2,700**  
tons of capacity per month

**2,390**  
tons of capacity per month



**60**  
production lines

**18**  
production lines

**20**  
production lines

**6**  
production lines

**19**  
production lines

**13**  
production lines

## Certifications by production plants:

	 BPM	 HACCP	 ISO 22000	 FDA	 FSMA	 FSSC 22000	 BRC	 ISO 9001	 ISO 14001	 OEA BASC	 KOSHER	 CERTIFIED GLUTEN FREE	 ZERO WASTE FACILITY
COLOMBIA CONFECTIONARY FACILITY													
GUATEMALA CONFECTIONARY & COOKIES FACILITY													
COOKIES & CRACKERS FACILITY													
PRESERVES FACILITY													
SPAIN - FIESTA FACILITY													

# Our portfolio Confectionery & Snacks

## Confectionery



**Mint or Fruit Flavored Spherical Hard Candy:**  
Line: Hoberger Balls  
Annual Capacity: 350 Tons



**Mint or Fruit Flavored Disc-Shaped Hard Candy:**  
Line: Uniplast Discs  
Annual Capacity: 800 Tons



**Coffee Flavored Oval Shaped Hard Candy:**  
Line: Twist  
Annual Capacity: 1,500 Tons



**Barrel Shaped Hard Candy:**  
Line: Barrels  
Annual Capacity: 470 Tons



**Butterscotch or Fruit Flavored Die-Cut Disc-Shaped Hard Candy:**  
Line: Uniplast discs  
Annual Capacity: 800 Tons



**Licorice:**  
Line: Regaliz 2  
Annual Capacity: 700 Tons



**Assorted Flavor Chewing Gum Filled Spherical Hard Candy Lollipop (17-25g):**  
Line: Flat Lollipops  
Annual Capacity: 4,600 Tons



**Cylindrical Shaped Hard Candy Lollipop:**  
Line: Pirulito  
Annual Capacity: 900 Tons

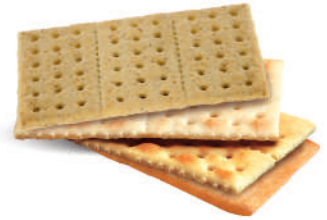


**Fruit Flavored Flat Hard Candy Lollipops (Up to 3 swirled colors):**  
Line: Flat Lollipops  
Annual Capacity: 1,450 Tons



# Our portfolio Confectionery & Snacks

## Cookies, Crackers & Chocolates



**Multipack Saltin, Club, Butter, or Whole Grain Crackers:**  
Line: Imaorni III  
Annual Capacity: 2,646 Tons

**Individual 4.2oz Minipack Saltin, Club, Butter, or Whole Grain Crackers:**  
Line: Imaorni III  
Annual Capacity: 2,646 Tons



**Cereal Bars:**  
Shelf Life: 9 months  
Line: Coated Bars  
Annual Capacity: 15 Tons



**Fruit Filled Chocolate:**  
Line: Multicavemil  
Annual Capacity: 1,600 Tons



**Ready-to-Eat Chocolate & Hazelnut Cream:**  
Line: Tecmar  
Annual Capacity: 670 Tons



**Soft Caramel Filled Chocolate Bonbons:**  
Line: Chocoball  
Annual Capacity: 400 Tons



## Confectionery

### Wrappers



Doble Twist



Sachet



Flow / Pillow



Twist



Double Sealed

### Packagings



Lay Down Bag



Peg Bag



Jar



Display Box

## Cookies & Crackers



Pack



Mini Pack



Multi Pack



Tin



Stand Up Bag



Plastic Tray



Display



# Our portfolio Sauces and Preserves

## Sauces & Preserves

**ARTIFICIAL COLOR AND FLAVORING FREE**

Shelf Life:  
9-15 months depending on type and packaging

### Capacities

Presentation	Size	Production Line	Annual Capacity (Tons)
Sachet	8-14 gr	Cramsa 2	270
Sachet	50-90 gr	Cramsa 1	600
Doy-Pack	90-200 gr	Volpak 2	1,200
Doy-Pack	200 gr	Volpak 6	1,000
Doy-Pack	300-1000 gr	Volpak 4	1,000
Bag	3000-4000 gr	Gallon	1,800

### Sauces\*



Ketchup

BBQ Sauce

Mustard Sauce

Honey Mustard Sauce

### Emulsified Sauces\*\*



Mayonnaise

Garlic Flavored Mayo-Mustard

Ranch Flavored Mayo-Mustard

Golf Sauce

Tartar Sauce

Mayo-Mustard

\*Available in 8, 50, 90, 130, 200, 400, and 600 gr Doy-Pack; or 4,000 gr Bag.  
\*\*Available in 8, 50, 90, 130, 200, 400, and 600 gr Doy-Pack; or 3,500 gr Bag.





# Our portfolio Confectionery & Snacks

## Sauces & Preserves

### Seasoning



#### Tomato Sauces:

Shelf life:  
8-15 months  
Line: Volpak 6  
Annual Capacity:  
1,000Tons

Shelf life:  
8-12 months  
Line: Volpak 2  
Annual Capacity:  
1,200 Tons



Soy Sauce, Asian Sauce,  
Black Sauce  
(Seasoning), Worcester  
Sauce, and Steak Sauce:  
Shelf life:  
12-18 months  
Line:  
Black Sauce  
Annual Capacity:  
530 Tons



Fruit Vinaigrette:  
Shelf Life: 9 Months  
Line:  
Rotary Press Pet  
Annual Capacity:  
660 Tons

### Hot Sauces



Glass Bottle:  
Shelf life: 12-24 months  
Line: Automatic  
Annual Capacity:  
390 Tons



PET Bottle:  
Shelf life: 12 months  
Line: Rotative  
Annual Capacity:  
1,200 Tons



Peppers in Vinegar:  
Shelf life: 24-36 months  
Line: Pickled  
Annual Capacity: 560 Tons



# Our Portfolio Sauces and preserves

## Sauces & Preserves

### Sauces & Spreads



**Stick Pack:**  
Line: Stick Pack  
Annual Capacity:  
70 Tons 15g



**Caramel Spread Doy-Pack:**  
Line: Volpak 1  
Annual Capacity:  
1,000 Tons 250g



**Caramel Spread Container:**  
Line: Fast fill  
Annual Capacity:  
1,100 Tons  
50g, 250g



**Whole Figs in Syrup:**  
Shelf life: 24 months  
Line: Figs  
Annual Capacity:  
2,700 Tons, 600g



**Fruit Jams**  
Shelf life: 12 months

Line: Volpak 2  
Annual Capacity:  
1,200 Tons  
90g

Line: Volpak 6  
Annual Capacity:  
1,000 Tons  
200g



**Salsa**  
Line: Kugler  
Annual Capacity:  
700 Tons, 300g



## Sauces & Preserves



Pet Bottle



Glass Bottle



Doy Pack



Gift Pack



Glass Jar



Plastic Tub

## Pet Bottles



- PRODUCTS:**
- ✔ Worcestershire sauce
  - ✔ Soybean sauce
  - ✔ Hot sauce
  - ✔ Chinese sauce
  - ✔ Black sauce

**PRESENTATIONS:**  
3.88oz, 5.82oz,  
6.28oz and 6.35oz



- PRODUCTS:**
- ✔ Sweet & sour sauce
- PRESENTATIONS:**  
7.83oz



- PRODUCTS:**
- ✔ Chili pepper sauce
- PRESENTATIONS:**  
11.29oz



- PRODUCTS:**
- ✔ Hot sauces
- PRESENTATIONS:**  
12oz



- PRODUCTS:**
- ✔ Ketchup Chipotle
  - ✔ Mayonnaise Chipotle

**PRESENTATIONS:**  
250g and 290g



- PRODUCTS:**
- ✔ Mango vinaigrette
  - ✔ Passion fruit vinaigrette

**PRESENTATIONS:**  
10.58oz, 11.64oz  
and 11.99oz

# Packaging Options

## Glass Bottles



PRODUCTS:  
✓ Peppers in vinegar

PRESENTATIONS:  
6 oz



PRODUCTS:  
✓ Hot sauces

PRESENTATIONS:  
3 oz



PRODUCTS:  
✓ Hot sauces

PRESENTATIONS:  
5,2 oz

## Glass Jars



PRODUCTS:  
✓ Figs  
✓ Guava dessert

PRESENTATIONS:  
21.16oz



PRODUCTS:  
✓ Tomato past  
✓ Pineapple jam  
✓ Strawberry jam  
✓ Guava jam

PRESENTATIONS:  
4.58oz, 8.82oz and  
10.58oz



PRODUCTS:  
✓ Mexican Sauce

PRESENTATIONS:  
215g

## Doy-pack / Bag



Sachet  
8g



Sachet  
50g



Doypack  
90g



Doypack  
130g



Doypack  
200g



Doypack  
380g-400g



Doypack  
600g



Doypack  
1000g



Bag  
3000 – 4000g

# Colombina's top-notch team brings you a wide assortment of products with incomparable quality and service.



## Annual MOQ

Depending on SKU and product category



## Shipment Terms

FOB, CIF, EXW, etc.



## Case and Pack:

Depending on the product category



Capable of generating GS1 UPC Barcodes



## Certificate of insurance

available



## EDI

Capable



## Commercial Relationship

Direct or Brokered



## Warehouses

in the US



## Port of Origin

Buenaventura





Colombina USA  
6303 Blue Lagoon Dr, Suite 425, Miami, FL, 33126  
Phone: 786 2651920  
[Customer.service@colombina.com](mailto:Customer.service@colombina.com)

