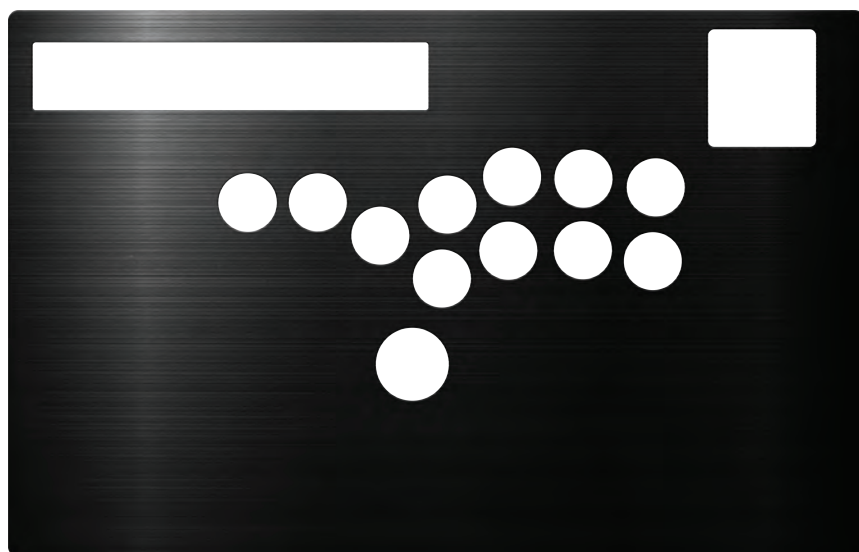


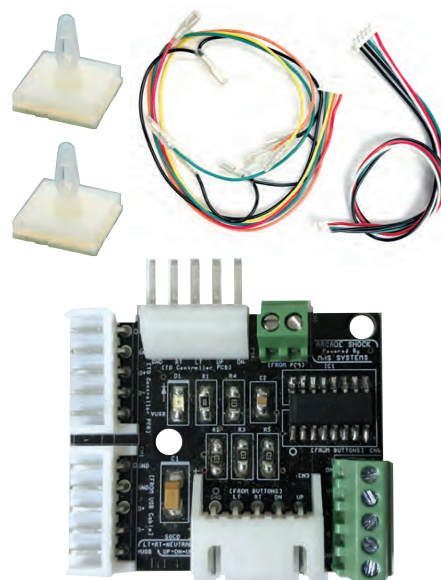
HORI RAP N

“HIT BOX” CONVERSION KIT INSTALL GUIDE

ITEM CHECKLIST



RAP N BRUSHED ALUMINUM HITBOX PANEL x1



SOCD CLEANER KIT



HORI RAP N (SOLD SEPARATELY)

SUGGESTED TOOLS



SLOTTED (FLATHEAD) SCREWDRIVER



PHILIPS SCREWDRIVER (PH2)

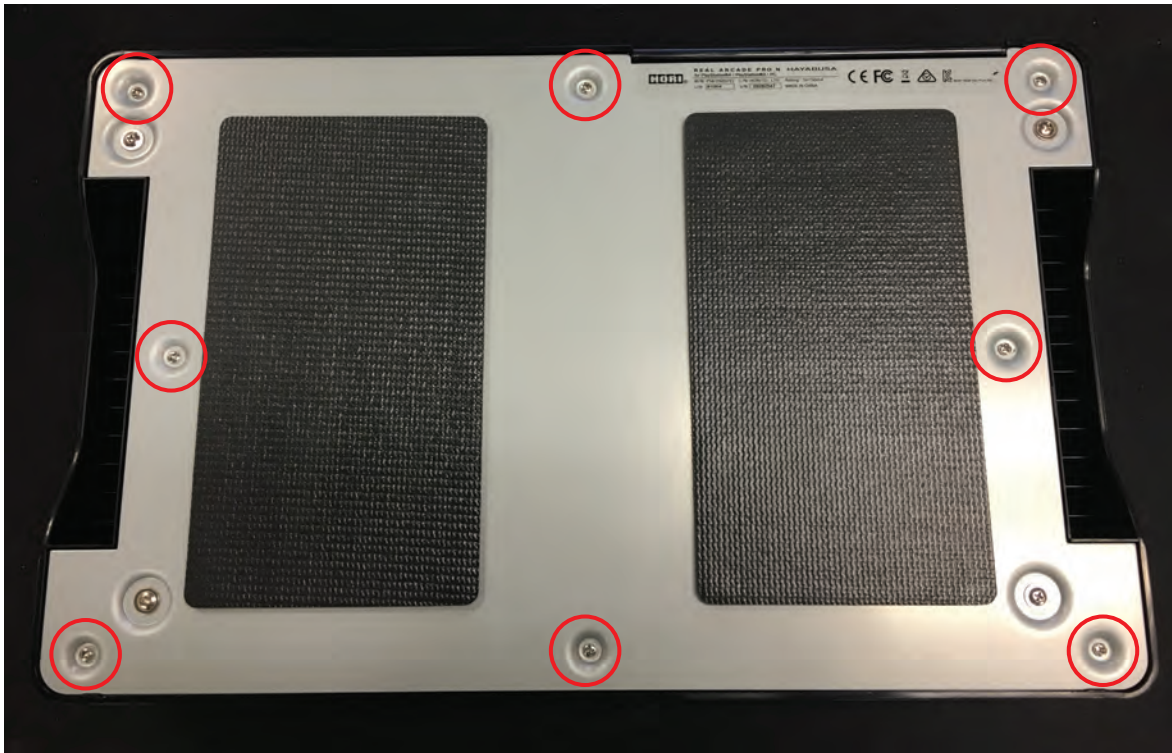


ALLEN KEY HEX TOOL (5/32)



INSTALL PROCESS

1



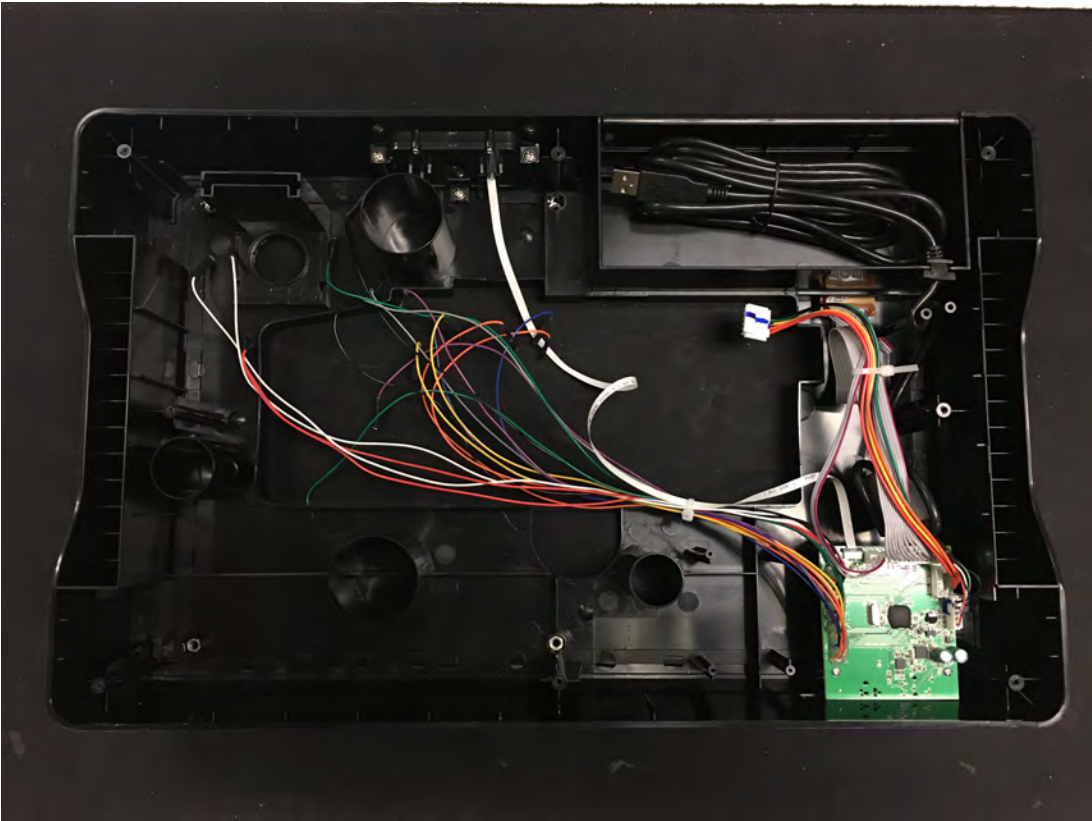
UNDO THE EIGHT (8) BOTTOM SCREWS TO OPEN THE ARCADE STICK BODY.

2



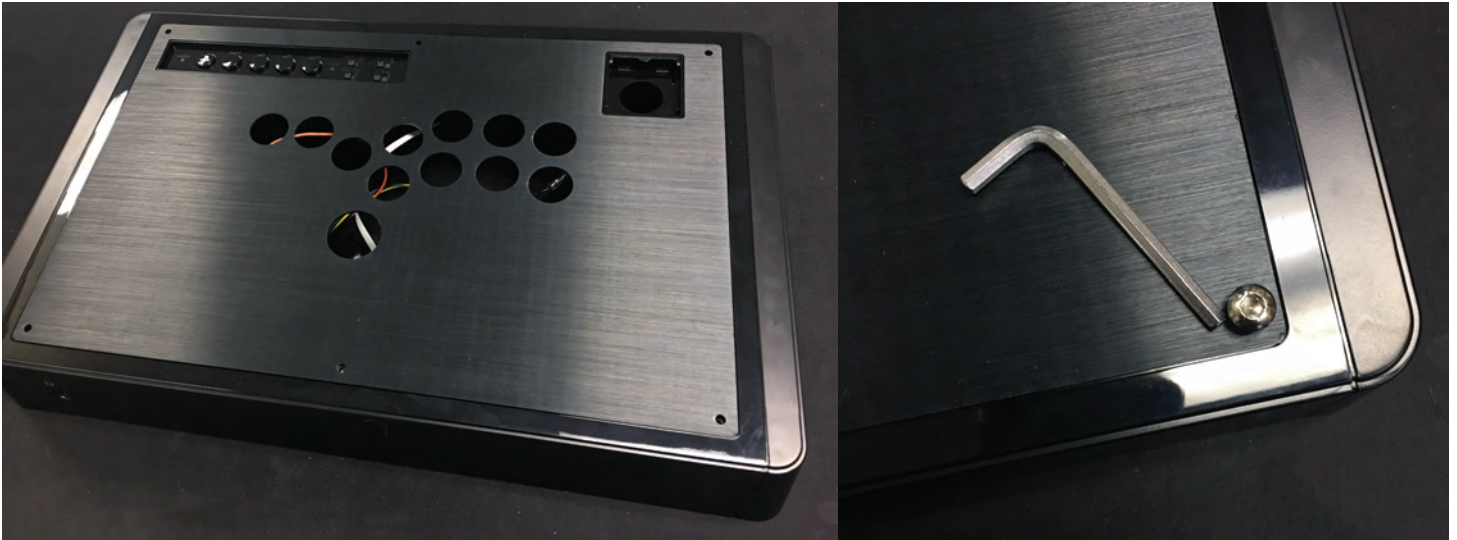
TO REMOVE THE TOP PANEL, UNDO THE SIX (6) PANEL BOLTS

3



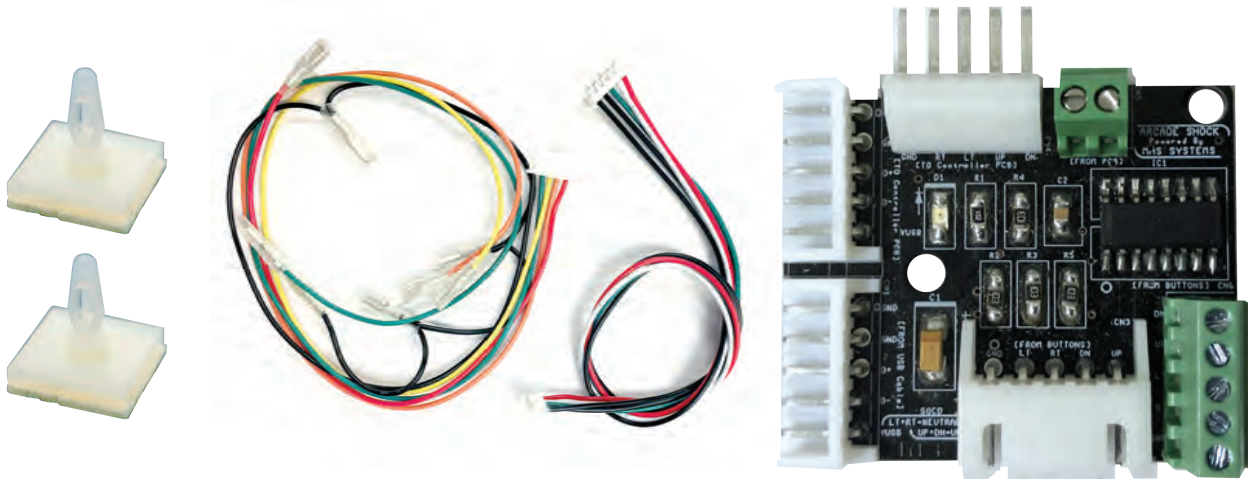
MAKE SURE ALL WIRING FOR THE BUTTONS ARE SAFELY UNDONE.

4

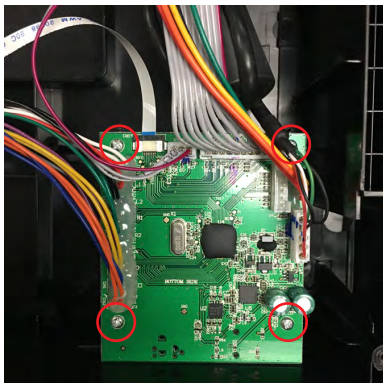


AFFIX THE HITBOX PANEL AND SECURE IT WITH THE BOLTS

5

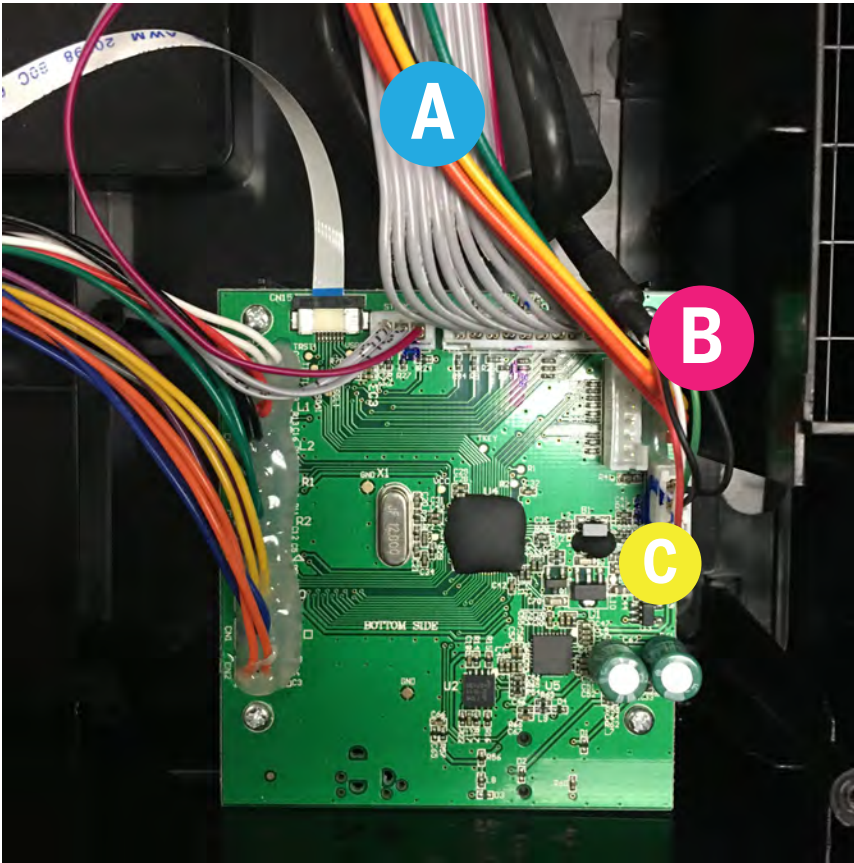


**ONCE THE HITBOX PANEL IS INSTALLED
GATHER ALL THE PARTS FOR THE SOCD CLEANER**



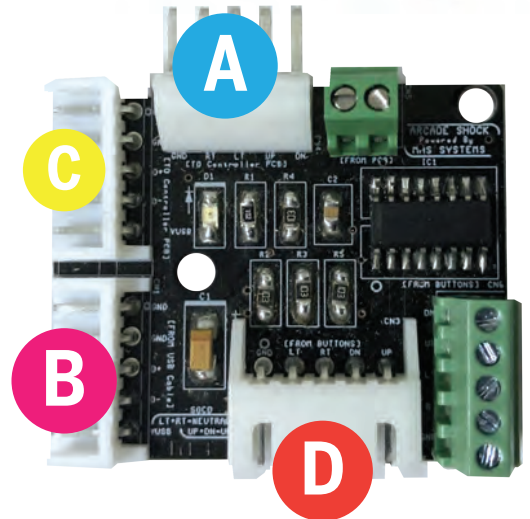
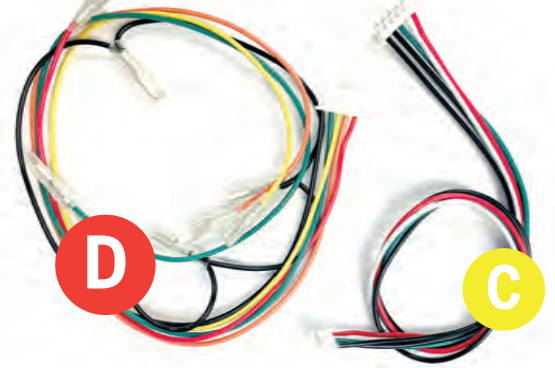
**PREP THE MAIN PCB
UNSCREW THE SCREWS SHOWN**

7



HITBOX HARNESS

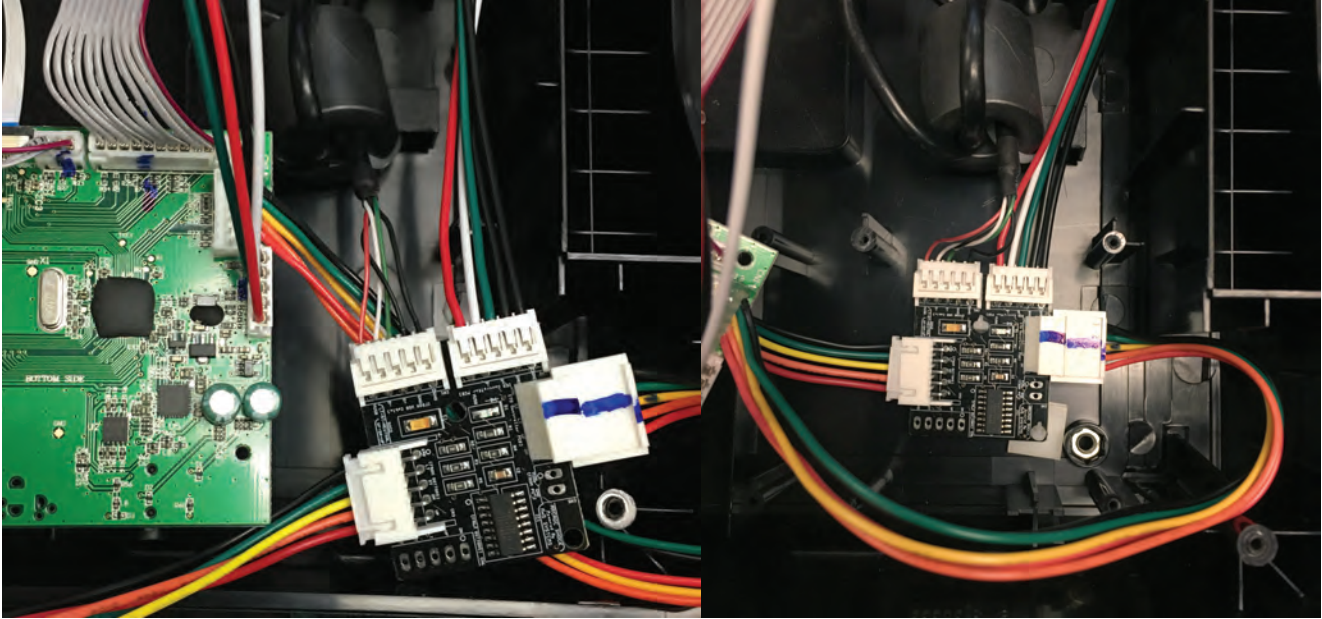
USB HARNESS



SOC D CLEANER BOARD

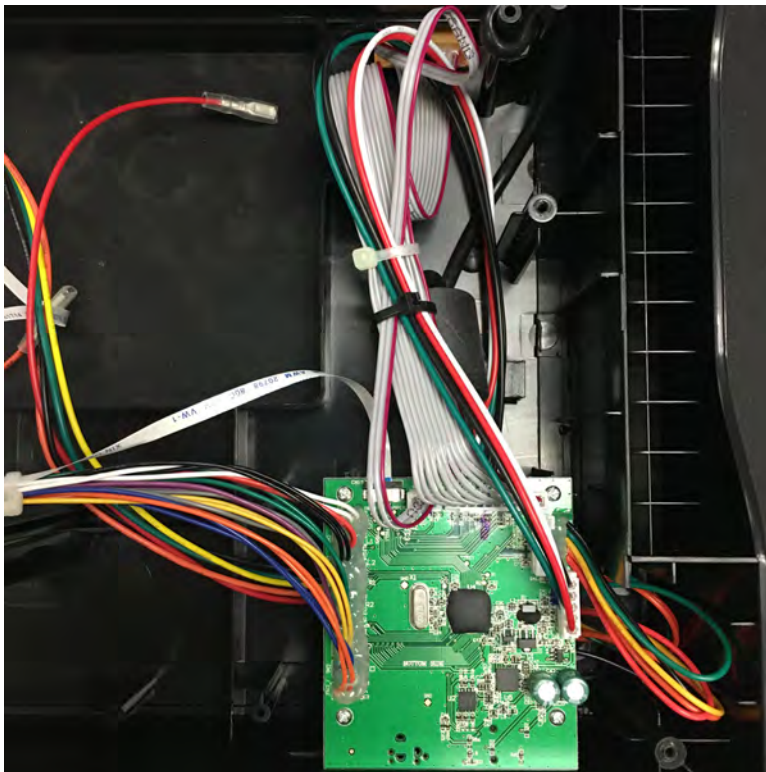
- A** CONNECT THE JOYSTICK 5-PIN TO THE SOC D CLEANER BOARD
- B** DISCONNECT THE USB CABLE FROM THE MAIN BOARD AND CONNECT TO THE SOC D CLEANER BOARD AS SHOWN
- C** USE THE USB HARNESS TO LINK THE SOC D CLEANER BOARD WITH MAIN PCB WHERE THE USB CABLE WAS PREVIOUSLY CONNECTED
- D** CONNECT THE HITBOX HARNESS TO THE SOC D CLEANER BOARD

8



**ONCE ALL PROPERLY CONNECTED.
SECURE AND MOUNT THE SOCD CLEANER BOARD UNDERNEATH
THE MAIN PCB.**

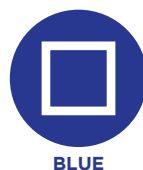
9



**RE-INSTALL THE
MAIN BOARD
AND CABLE MANAGE
ACCORDINGLY**

INSTALL THE PUSHBUTTONS AND RE-CONNECT THE WIRES FOR THE ACTION BUTTONS

PROCEED THEN TO CONNECT THE HITBOX HARNESS TO THEIR RESPECTIVE DIRECTIONAL BUTTONS



USE THIS COLOR GUIDE TO WIRE IT IN THE CORRECT ORDER (VIEW FROM BOTTOM/INSIDE THE ARCADE STICK)



AFTER CLOSING UP THE BOTTOM PANEL, THE HITBOX IS COMPLETED