

# kranzle®

*Quality High Pressure Cleaners*



Kränzle Catalogue / Program

## PROFESSIONAL SERIES



■ Made  
■ in  
■ Germany



[www.kranzle.co.nz](http://www.kranzle.co.nz)

V1.0



## FOR ANY APPLICATION KRANZLE HAS THE PERFECT SOLUTION!

### EACH INDUSTRY REQUIRES INDIVIDUAL SOLUTIONS

Requirements and tasks differ considerably from industry to industry. Kränzle has developed a product range which caters for them all thanks to its diversity and depth.

No demands are too high, no cleaning tasks too difficult. Kränzle is your professional partner for any demand from your industry.

### CLEANING OF BUILDINGS - HOUSE & YARD

Kränzle cleaning units will make everything around your house and yard shine again. Terraces, driveways, stairwells, walls, fences or garden furniture – Kränzle high-pressure cleaners, wet and dry vacuum cleaners and sweepers will make anything shine. The comprehensive accessories range offers ideal solutions for any cleaning task.

- Private users (house & yard)
- Building cleaning
- Caretaker operations



### GARAGES, FORWARDING COMPANIES

The cleanliness of outdoor facilities, the workshop and vehicles serves as a calling card for car dealers, garages and motor vehicle companies, forwarders, bus and taxi providers. There is no second chance to make a first impression. Kränzle offers perfect cleaning solutions for all requirements.

- Automotive industry
- Bus and taxi operations
- Motor vehicle operations
- Fleet
- Forwarders



### AGRICULTURE

Cleanliness is a prerequisite for health, hygiene and best working conditions in agriculture. A Kränzle High pressure cleaner is a must-have for any agricultural operation especially when cleaning tractors and machines after a hard and dusty day in the field. Also don't forget about cleaning the stables.

- Agricultural technology
- Forestry operations
- Animal Care
- Biogas plants



### CRAFT SECTOR

Tradespeople are subject to great time and cost pressure, working under difficult and frequently changing working condition. Flexible, high-performance and at the same time extremely robust cleaning units make everyday work easier and ensure optimal cleaning results. Kränzle has recognised these needs and developed precisely matching devices and accessories.

- Metalworking workshops
- Paintshops
- Carpentry workshops
- Bakeries
- Joineries



### PUBLIC SERVICE, CONSTRUCTION INDUSTRY

Cleaning tasks in public service require professional devices without any compromises. Kränzle's high-pressure cleaners are the ideal partners when cleaning construction site vehicles, transporters, public squares or removing graffiti from facades. The wide product range offers just the right device for any need.

- Building trade
- Municipalities
- Fire brigade
- Railway
- Rescue services



### HYGIENE SECTOR, SANITARY FACILITIES

Hygiene and sanitary areas such as butcher's shops, slaughterhouses and sanitary facilities require abrasion-proof tyres and high-pressure hoses. Kränzle's NoM (Non-Marking) versions meet these requirements. White full rubber tyres and grey high-pressure hoses leave no marks of abrasion. Most of Kränzle's high-pressure cleaners are available in a NoM version.

- Butchers' shops and slaughterhouses
- Sanitary facilities
- Pipe, sewage and industrial service
- Sewage technology



### INDUSTRY

The areas of use in industrial operations offer enormous diversity. Factory halls and machines regularly must be cleared of dust, dirt and oil contamination. With its broad and deep range, Kränzle offers everything that industrial operations need.

- Machines and plant construction
- Steel construction
- Wharf/ship building





# TECHNICAL HIGHLIGHTS

### WHY CHOOSE KRÄNZLE?

If you opt for the Kränzle brand, you will always receive sophisticated high-pressure cleaners with technical benefits that impress all around. Many of these technical details are innovations that originate in the Kränzle development centre in Illertissen. As a result, users of Kränzle products feel confident with the cleaning power and trust the innovative designs.



#### **PUMP HEAD MADE OF SPECIAL BRASS**

Deterioration of the pump caused by corrosion is impossible as a result of selecting superior quality materials. The water-conducting components of the pump head and safety devices are made of stainless steel and special brass to ensure long service lives.

#### **STAINLESS STEEL PRESSURE GAUGE**

All high-pressure cleaners are equipped with large, clearly visible, glycerine damped stainless steel gauges.



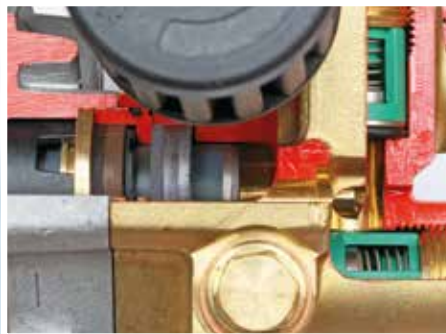
#### **BYPASS OPERATION**

Kränzle high-pressure cleaners switch over to a pressure reduced bypass operation as soon as the trigger gun is released. The water is circulated with a residual pressure of approx. 10 bar. Models with Total-stop-system switch off at this point. The high-pressure pump and motor are discharged leading not only to a significant prolongation of the service life but to energy savings as well.



#### **STAINLESS STEEL PLUNGERS (PISTONS) WITH CERAMIC COATING**

All Kränzle high-pressure cleaners are equipped with ceramic coated stainless steel plungers, considerably increasing life-time of the machines. The good thermal conductivity of a stainless steel plunger is unified with the positive characteristics of a ceramic coating (extremely low-wear surface).



#### **DRY-RUN SAFETY AND LEAKAGE RETURN SYSTEM**

Kränzle high-pressure cleaners are equipped with a fabric sleeve and a Teflon graphite backing ring. The excellent lubricating properties of Teflon graphite serve to reduce both the friction and temperature inside the pump. For this reason, Kränzle high-pressure cleaners can be run without water for quite some period without suffering any damage. A water cushion between the high-pressure seals on the plungers prevents any sucked in air from reaching the pump chamber.

#### **HOSE DRUMS**

Models with hose drums offer maximum convenience and avoid tripping hazards caused by high-pressure hoses that are not coiled up. The large hose drums allow the use of up to 30 meter hoses, depending on the model, and therefore a much greater range.



#### **DURABLE HIGH PERFORMANCE MOTOR**

Large dimensioned durable motors in the usual high Kränzle quality for extreme durability and highest performance. High-pressure cleaners with slow-running 4-pole electrical motors (1,400 rpm) work at lower speeds to reduce start-up currents and quieter noise levels as well as reduced wear.



#### **OPERATING PRESSURE, CONTINUOUSLY ADJUSTABLE**

For all machines the operating pressure and the amount of water being sprayed can be exactly adjusted to suit the cleaning task.



#### **WATER TANK**

The integrated water tank (in the machines of the Profi, quadro and therm series) serves as a water buffer between the main water supply and the high-pressure pump to prevent most pump damage caused by a lack of water. This design also offers application of chemical agents at full operating pressure and without a low-pressure injector a further advantage is an increased performance at the lance.



## The HD-Series



**Practical carrying handle**  
Portable and space-saving compact design

**Pressure regulation**  
Fully adjustable control allows operating pressures to be set to suit any task

**Heavy Duty Stainless Steel Frame**

**Total-stop system**  
Auto-shutdown feature improves seal life-span and reduces power consumption

**4-pole electrical motor** (1.400 Rpm)  
Heavy duty induction motors offer quiet operating sound levels and provide maximum life expectancy (HD 7/122 TS)



**2 YEAR**  
COMMERCIAL  
WARRANTY

Brass  
Pump Head  
**10 YEAR**  
WARRANTY



**EVEN BETTER NOW!**

**NEW: TOTAL-STOP SYSTEM**

Closing the safety trigger gun switches off the motor of the high-pressure cleaner immediately.

- Relief of the high-pressure pump
- Energy saving
- Increase of the service life



Technical specifications	KHD7/122TS		KHD10/122TS	
	Single phase		Single phase	
Operating pressure adjustable	psi	1435		1740
Max. admissible overpressure	psi	1740		1960
Connected load	V / ~ / Hz / A	230 / 1 / 50 / 7.5		230 / 1 / 50 / 11
Motor speed	Rpm	1400		2800
Water output	l/min   l/h	7	420	10   600
kW		1.0		2.5
Power supply cable	m	5		5
Dimensions L x W x H	mm	440 / 200 / 330		440 / 200 / 330
Weight	kg	22		23
Detergent Injector		-		-
Equipment				
Hose drum		-		-
Steel braided high-pressure hose	m	10		10
Trigger gun with safety catch	Model	M2000		M2000
Dirtkiller lance (Optional)	Nozzle size	● 028		● 042
Stainless steel lance with flat jet nozzle	Nozzle size	● M20028		● M20042



**One-piece Roto-Mold chassis**  
Virtually indestructible

**Cleaning Agent Intake**  
Injector system for dispensing of cleaning agents

**Total-stop system**  
Auto-shutdown feature improves seal life-span and reduces power consumption

**Integrated Hose drum**  
Practical design and features a longer length high-pressure hose complete with folding crank

**Pressure regulation**  
Fully adjustable control allows operating pressures to be set to suit any task

**Storage system**  
Practical stowing of the trigger gun with safety catch and lances

		K1152TST-10A	
Technical specifications		Single phase	
Operating pressure adjustable	psi	1670	
Max. admissible overpressure	psi	2175	
Connected load	V / ~ / Hz / A	230 / 1 / 50 / 10	
Motor speed	Rpm	2800	
Water output	l/min   l/h	10	600
kW		2.3	
Power supply cable	m	5	
Dimensions L x W x H	mm	300 / 300 / 800	
Weight	kg	27	
Detergent Injector		●	
Equipment			
Hose drum		●	
Steel braided high-pressure hose	m	15	
Trigger gun with safety catch	Model	M2000	
Dirtkiller lance	Nozzle size	● 042	
Vario-Jet lance	Nozzle size	● 042	

**2 YEAR**  
COMMERCIAL  
WARRANTY

Brass  
Pump Head  
**10 YEAR**  
WARRANTY





## The K 2000-Series



**One-piece Roto-Mold chassis**  
Virtually indestructible

**Total-stop system**  
Auto-shutdown feature improves seal life-span and reduces power consumption

**Tidy storage system**  
Practical stowing of the trigger gun with safety catch and lances

**Heavy Duty**  
Non-marking Wheels

**Integrated Hose drum**  
Practical design and features a longer length high-pressure hose complete with folding crank (TST design)

**Cleaning Agent Intake**  
Injector system for dispensing of cleaning agents

**Pressure regulation**  
Fully adjustable control allows operating pressures to be set to suit any task

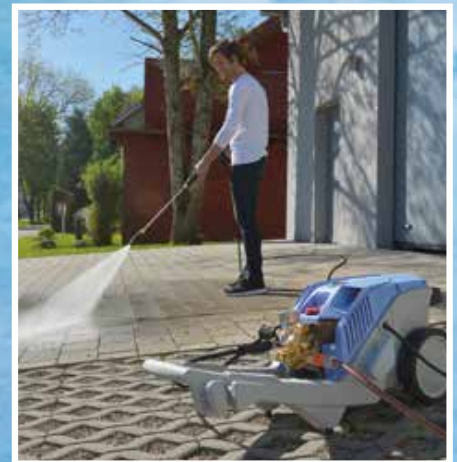


**2 YEAR**  
COMMERCIAL  
WARRANTY

Brass  
Pump Head  
**10 YEAR**  
WARRANTY



		K2160TST	
		single phase	
<b>Technical specifications</b>			
Operating pressure adjustable	psi	2030	
Max. admissible overpressure	psi	2320	
Connected load	V / ~ / Hz / A	230 / 1 / 50 / 14	
Motor speed	Rpm	1400	
Water output	l/min   l/h	11	660
kW		3.3	
Power supply cable	m	5	
Dimensions L x W x H	mm	335 / 375 / 980	
Weight	kg	41	
Detergent Injector		●	
<b>Equipment</b>			
Hose drum		●	
Steel braided high-pressure hose	m	15	
Trigger gun with safety catch	Model	M2000	
Dirtkiller lance	Nozzle size	● 042	
Vario-Jet lance	Nozzle size	● 042	





#### Total-stop system with delayed motor cut-off

Auto-shutdown feature improves seal lifespan and reduces power consumption

#### Pressure regulation

Fully adjustable control allows operating pressures to be set to suit any task

#### Cleaning Agent Intake

Injector system for dispensing of cleaning agents

#### Integrated Hose drum

Practical design and features a longer length high-pressure hose complete with folding crank

#### Integrated water tank

Prevents damage to the high-pressure pump caused by a lack of water

#### Roto-Mold-Chassis

Virtually indestructible



Technical specifications		KQ599TST	KQ799TST	KQ1200TST
		Single Phase	Three Phase	Three Phase
Operating pressure adjustable	psi	2175	2610	2610
Max. admissible overpressure	psi	2390	2900	2900
Connected load	V / ~ / Hz / A	230 / 1 / 50 / 14	400 / 3 / 50 / 8.5	400 / 3 / 50 / 12
Motor speed	Rpm	1400	1400	1400
Water output	l/min   l/h	10   600	13   780	19   1140
kW		3.2	3.5	4.9
Volume water tank	l	10	10	16
Power supply cable	m	5	7.5	7.5
Dimensions L x W x H	mm	780 / 395 / 870	780 / 395 / 870	770 / 570 / 990
Weight	kg	60	60	89
Detergent Injector		●	●	●
<b>Equipment</b>				
Hose drum		●	●	●
Steel braided high-pressure hose	m	20	20	20
Trigger gun with safety catch	Model	M2000	M2000	Starlet
Dirtkiller lance	Nozzle size	● 035	● 045	● 07
Stainless steel lance with flat jet nozzle	Nozzle size	● M20035	● M20045	● D2507



# HOT WATER – OIL HEATED

## TECHNICAL HIGHLIGHTS

### KRÄNZLE-THERM SET NEW STANDARDS WITH THEIR TECHNICAL ADVANTAGES!

The Kränzle therm hot water high-pressure cleaners combine a number of technical innovations by Kränzle that contribute to reliable operation, safety of the equipment and not least operating and servicing. The Kränzle therm cleaners are extremely safe to operate, kind to the environment, clean and quiet. The Kränzle therm high-pressure cleaners represent the state-of-the-art in equipment and safety.

1. **SAFETY VALVE**  
protects the device from undesirable excessive pressure build-up
2. **FLOW MONITOR**  
prevents overheating of the heating chamber caused by a lack of water.
3. **PRESSURE SWITCH (BURNER)**  
heating is only possible when pressure from the pump is detected.
4. **PRESSURE SWITCH (DEVICE)**  
controls automatic device stand-by feature if the trigger gun with safety catch remains closed for 30 seconds.
5. **OVERCURRENT PROTECTION**  
switches off the high-pressure cleaner caused by excessive power intake.
6. **DIGITAL FLAME MONITORING**  
switches off the fuel supply if the burner flame goes out.
7. **PRESSURE REGULATION CONTROL VALVE**  
allows for smooth control of the water volume and water pressure, as well as pressure-free bypass operation.



### DIGITAL THERMOSTAT **therm-1-Series**

#### **OPERATION MODE 1: THERMOSTAT REGULATION °C**

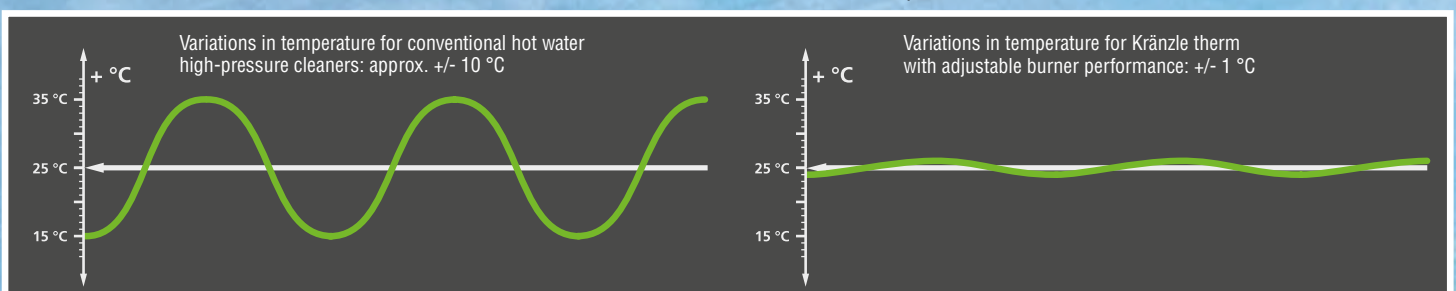
The desired water temperature is specified in °C. A thermostat measures the temperature at the end of the heating coil and controls the burner until the desired temperature is reached. (The ACTUAL temperature is displayed.)

#### **OPERATION MODE 2: BURNER OUTPUT %**

The burner is switched on and off at a corresponding cycle frequency based on the percentages set (TARGET value). The water temperature at the end of the heating coil is indicated as ACTUAL value in °C. The advantage of this operating mode is in a water temperature maintained precisely to one degree (+/- 1 °C), even at operation with partial volumes and at low temperatures.

#### **OPERATING HOURS COUNTER**

The device displays both cold and hot operating time information separately which can assist with determining appropriate servicing intervals and requirements.





**NEW!**



Trigger gun with safety catch and lance replaces one-piece design



**Integrated Hose Drum (Optional)**

Practical design and features a longer length high-pressure hose complete with folding crank

**Operating panel arranged for good overview**

with adjustable rotary thermostat for controlling the water temperature

**Cleaning Agent Intake**

Injector system for dispensing of cleaning agents

**Removable covers**

Protect the mechanical components from environmental factors and provide convenient access

**Parking brake**

For a secure stationary position

**Pressure regulation**

Fully adjustable control allows operating pressures to be set to suit any task

		CA11/130
Technical specifications		Single Phase
Operating pressure adjustable	psi	1885
Max. admissible overpressure	psi	2100
Connected load	V / ~ / Hz / A	230 / 1 / 50 / 15
Motor speed	Rpm	1400
Water output	l/min   l/h	11   660
kW		2.3
Volume water tank	l	4
Hot water output adjustable	°C	12-80
Steam level	°C	140
Heating output	kW	55
Fuel tank	l	25
Power supply cable	m	5
Dimensions L x W x H	mm	800 / 600 / 980
Weight	kg	171
Detergent Injector		●
Equipment		
Hose drum		-
Steel braided high-pressure hose	m	10
Trigger gun with safety catch	Model	M2000
Stainless steel lance with flat jet nozzle	Nozzle size	● D25045

**EVEN BETTER NOW!**

**MAKING A CHANGE IS EASY**

The therm-CA are now being supplied with a two piece trigger gun with safety catch and lance with threaded fittings.





## The therm 1-Series

**TOP  
SELLER**



### Tidy storage system

Practical stowing of the trigger gun with safety catch and lances

### Integrated Hose drum

Practical design and features a longer length high-pressure hose complete with folding crank (Version incl. hose drum)

**Biggest model  
in single phase!**

### Digital operating panel

to control the water temperature and view cold/hot use operating time management

### Removable covers

Protect the mechanical components from environmental factors and provide convenient access

### Cleaning Agent Intake

Injector system for dispensing of cleaning agents

### Parking brake

For a secure stationary position



		therm 635-1
Technical specifications		Single Phase
Operating pressure adjustable	psi	1885
Max. admissible overpressure	psi	2100
Connected load	V / ~ / Hz / A	230 / 1 / 50 / 15
Motor speed	Rpm	1400
Water output	l/min   l/h	10.6   635
kW		2.3
Volume water tank	l	4
Hot water output adjustable	°C	12-89
Steam level	°C	145
Heating output	kW	55
Fuel tank	l	35
Power supply cable	m	5
Dimensions L x W x H	mm	1200 / 800 / 1050
Weight	kg	200
Detergent Injector		●
Equipment		
Hose drum		●
Steel braided high-pressure hose	m	20
Trigger gun with safety catch	Model	Starlet
Stainless steel lance with flat jet nozzle	Nozzle size	● D25045



### TECHNICAL HIGHLIGHTS!

#### DIGITAL THERMOSTAT

The high-pressure cleaners of the therm-1-series are fitted with a digital thermostat which combines a variety of advantages in operation and service.

- Intelligent system analysis
- Reduction of fuel costs thanks to object-specific temperature specification
- Simple reading of the operating hours





## The therm 1-Series

TOP  
SELLER



### Tidy storage system

Practical stowing of the trigger gun with safety catch and lances

### Integrated Hose drum

Practical design and features a longer length high-pressure hose complete with folding crank (Version incl. hose drum)

### Digital operating panel

to control the water temperature and view cold/hot use operating time management

### Removable covers

Protect the mechanical components from environmental factors and provide convenient access

### Cleaning Agent Intake

Injector system for dispensing of cleaning agents

### Parking brake

For a secure stationary position



Water output < 1000 l/h

Technical specifications		therm 895-1	therm 1165-1
		Three Phase	Three Phase
Operating pressure adjustable	psi	2830	2390
Max. admissible overpressure	psi	3120	2610
Connected load	V / ~ / Hz / A	400 / 3 / 50 / 12	400 / 3 / 50 / 12
Motor speed	Rpm	1400	1400
Water output	l/min   l/h	14.9   895	19.4   1165
kW		5.5	5.5
Volume water tank	l	4	4
Hot water output adjustable	°C	12-86	12-82
Steam level	°C	155	155
Heating output	kW	65	78
Fuel tank	l	35	35
Power supply cable	m	7.5	7.5
Dimensions L x W x H	mm	1050 / 800 / 1000	1050 / 800 / 1000
Weight	kg	220	220
Detergent Injector		●	●
<b>Equipment</b>			
Hose drum		●	●
Steel braided high-pressure hose	m	20	20
Trigger gun with safety catch	Model	Starlet	Starlet
Stainless steel lance with flat jet nozzle	Nozzle size	● D25045	● D2507

**2 YEAR**  
COMMERCIAL  
WARRANTY

Brass  
Pump Head  
**10 YEAR**  
WARRANTY



### TECHNICAL HIGHLIGHTS!

#### DIGITAL THERMOSTAT

The high-pressure cleaners of the therm-1-series are fitted with a digital thermostat which combines a variety of advantages in operation and service.

- Intelligent system analysis
- Reduction of fuel costs thanks to object-specific temperature specification
- Simple reading of the operating hours





# Kränzle®

HAND POWER SWEEPERS

## Kränzle 2+2



Contra-rotating brush (CRB) action principle



**Folding push-handle**  
For space-saving storage

**Storage bin**  
made of impact-proof plastic

**Continuously height adjustable side brushes**

**Counter-rotating side brushes**  
sweep debris to centre

**2 YEAR**  
COMMERCIAL  
WARRANTY

**K2+2SWEEP**

**Technical specifications**

Working width	mm	800
Volume storage bin	l	40
Weight	kg	16

## Models also available - Indent Only

**KQ11/135**



**KB200T**



**KB230T**



**VENTOS 30E**



**KTH871E-ST48**



*“Enquire today to find out more on these models”*



## Steam Cleaning Machines

Thermal Industrial Models - Diesel Heated

Model:	CA11/130	KTH635-1	KTH895-1	KTH1165-1
Phase:	Single Phase	Single Phase	Three Phase	Three Phase
kW:	2.3	2.3	5.5	5.5
RPM	1400	1400	1400	1400
Litre/min:	11	10.6	14.9	19.4
Operating/max. pressure (psi):	1885/2100	1885/2100	2830/3120	2390/2610
Total Stop:	yes + delay	yes + delay	yes+ delay	yes+ delay
Water Tank:	yes	yes	no	no
kg:	171	200	220	220
Hose:	10m	20m drum	20m drum	20m drum
Detergent Injector:	hp	hp	hp	hp
Size (mm):	860 x 600 x 980	1200 x 800 x 1050	1050 x 800 x 1000	1050 x 800 x 1000

## Cold Water Machines

Compact, light commercial models

Commercial/Industrial

Model:	KHD7/122TS	KHD10/122TS	K1152TST-10A	K2160TST
Phase:	Single Phase	Single Phase	Single Phase	Single Phase
kW:	1.6	2.5	2.3	3.3
RPM:	1400	2800	2800	1400
Litre/min:	7	10	10	11
Operating/max. pressure (psi):	1435/1740	1740/1960	1670/2175	2030/2320
Total Stop:	yes	yes	yes	yes
Water Tank:	no	no	no	yes
kg:	22	23	27	41
Hose:	10m	10m	15m drum	15m drum
Detergent Injector:	optional	optional	yes	hp
Size (mm):	440 x 200 x 330	440 x 200 x 330	300 x 300 x 800	335 x 375 x 980

Heavy Duty/Industrial

Model:	KQ599TST	KQ799TST	KQ1200TST
Phase:	Single Phase	Three Phase	Three Phase
kW:	3.2	3.5	4.9
RPM:	1400	1400	1400
Litre/min:	10	10	19
Operating/max. pressure (psi):	2175/2390	2610/2900	2610/2900
Total Stop:	yes + delay	yes + delay	yes + delay
Water Tank:	yes	yes	yes
kg:	60	60	89
Hose:	20m drum	20m drum	20m drum
Detergent Injector:	hp	hp	hp
Size (mm):	790 x 395 x 870	780 x 395 x 870	770 x 570 x 990

## Sweepers

Push-along machine

Model:	K2+2
Width:	800mm
Storage:	40L
kg:	16





## Industrial Duty Cleaning Accessories



Hand Gun - 360mm

# 12480

To suit models: KHD7/122TS, KHD10/122TS  
K2160TST, KQ599TST, KQ799TST.



Heavy Duty Gun - 360mm

# 123202

To suit all models.



Standard Spray Lance

# 123925-M20

400mm Lance c/w Knife Jet Nozzle

To suit models: KQ599TST, KQ799TST.

# 123922-D25045

600mm Lance c/w Fan Jet Nozzle

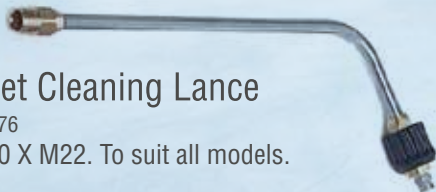
To suit models: KQ1200TST, KTH635-1 & KTH895-1



Lance Extension

# 41154

1000mm ST 30 x M22. To suit all models.



Toilet Cleaning Lance

# 41076

ST 30 X M22. To suit all models.



Underbody Lance

# 41075

1000mm extension - stainless steel pipe

### Dirt Killer Nozzles

035 x 1/4" Female

# 410734 To suit models: KHD10/122,

045 x 1/4" Female

# 410713 To suit models: K1152TST, K2160TST  
KQ799TST, KQ599TST

055 x 1/4" Female

# 410714 To suit model: CA11/130



### Turbo Killer Nozzles

045 x 1/4" Female

# 410718 To suit models: K1152TST, KQ799TST,  
KB200T, CA11/130, KTH895-1.

07 x 1/4" Female

# 410715 To suit models: KB230T, KTH1165-1

055 x 1/4" Female.

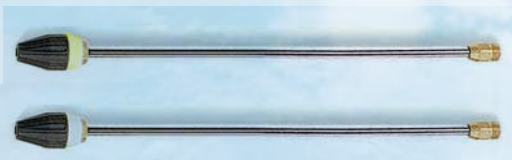
# 410712 To suit model: KQ1200TST



Vario Jet Nozzle

045 x 1/4" Female.

# 41155 To suit models: K1152TST, KHD10/122TS



### Dirt Killer Lances Complete

035 Complete - 500mm

# 410722 To suit model: KHD10/122TS

042 Complete - 500mm

#41570-042 To suit models: K1152TST, KQ599TST,  
KQ799TST, CA11/130, K2160TST

### Turbo Killer Lances Complete

045 Complete - 500mm

# 410723 To suit models: KQ799TST, KTH895-1,  
KB200T



## 055 Complete - 600mm

# 410724 To suit model: KQ1200TST

## 07 Complete - 600mm

# 410727 To suit models: KB230T, KTH1165-1

## Vario Jet Lances Complete

### 042 Complete - 400mm

# 41156 To suit model: K1152TST, KHD10/122TS

### 055 Complete - 400mm

# 411561 To suit model: CA11/130

## Round Floor Cleaners



### 300 Round Floor Cleaner

# 41105 To suit models: KHD10/122TS, K1152TST, K2160TST, KQ599TST (indent orders only)

### 420 Round Floor Cleaner

# 41106 To suit all models. (indent orders only)

### 520 Round Floor Cleaner

# 41107 To suit all models. (indent orders only)

### UFO Round Floor Cleaner

# 41850 To suit models:  
K1152TST, K2160TST,  
KQ599TST



## Foaming lance

#18958



## Water Filter 3/4"

# 13300 Male / Female

# 133001 Male / Female union nut

Suits all models



## Detergent Injector Kit

# 133761

Detergent injector as an accessory for Kránzle cleaners with petrol engines.

To suit models: KHD10/122TS



## Rotary Wash Brush

# 410501

ST30 Nipple M22

Suits all models



## Flat Floor Cleaner

# 410931

### 045 Complete

To suit models: KHD10/122TS, K1152TST, K2160TST, KQ599TST, KQ799TST, KB200T, CA11/130, KTH635-1, KTH895-1



## Sandblast Accessory Kit

# 41068

19L/min, 250b

To suit all models.



## Sludge Sucker

# 41104

To suit all models.



## 3m Suction Hose

# 150383

Comes with filter.

To suit all models.



## Pipe Cleaning Hose

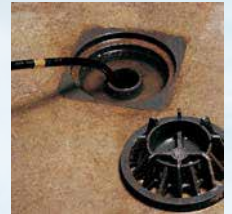
Comes with Nozzle

# 410581 10m

# 410582 20m

#410584 30m

To suit all models



## Steel Wire Braided Hose

High pressure, 3/8" F/F.

### 10m, 210bar

# 43416 To suit: KHD7/122TS, KHD10/122TS

### 15m, 210bar

# 48015 To suit: K1152TST, K2160TST

### 20m, 210bar

# 434161 To suit: KQ599TST, KQ799TST, KQ1200TS

### 10m, 230bar

# 41081 To suit: CA11/130

### 20m, 400bar

# 41083 To suit: KTH635-1, KTH895-1, KTH1165-1

#443812 To Suit: KTH895, KTH635, KTH1165







**kranzle**<sup>®</sup>

*Quality High Pressure Cleaners*

[www.kranzle.co.nz](http://www.kranzle.co.nz)