

# **Darwin Platform**

## **Release Notes**

---

# Table of Contents

<b>1 Release Notes.....</b>	<b>1</b>
<b>1.1 V3.000.0000000.12.....</b>	<b>1</b>
<b>1.2 Software Environment.....</b>	<b>1</b>
<b>2 Update Guide.....</b>	<b>3</b>
<b>2.1 Introduction.....</b>	<b>3</b>
<b>2.2 Preparation.....</b>	<b>3</b>
<b>2.3 Instructions.....</b>	<b>3</b>
<b>2.3.1 Updating by ConfigTool.....</b>	<b>3</b>
<b>2.3.2 Updating through the Webpage.....</b>	<b>5</b>
<b>2.3.3 Cloud Update through the Webpage.....</b>	<b>6</b>
<b>2.4 Checking for Update Success .....</b>	<b>7</b>
<b>2.4.1 Checking the Result of Update by ConfigTool.....</b>	<b>7</b>
<b>2.4.2 Checking the Result of Update through the Webpage.....</b>	<b>7</b>

# 1 Release Notes

## 1.1 V3.000.0000000.12

### Release Date

January 19, 2024

### New Features

- None.

### Optimized Features

- None.

### Fixed Bugs

- ICR did not switch occasionally.

### Third-party Access

- CGI testing tool: V2.91.0.3.
- ONVIF testing tool: V20.06.
- ONVIF: Supports Profile S and Profile T.
- MILESTONE 2020R3.

## 1.2 Software Environment

Category	Model	Version
NVR	NVR5X-4KS2	DH_NVR5XXX-4KS2_MultiLang_V4.001.0000003.2.R.201010.zip
	NVR5X-I/L	DH_NVR5XXX-I_MultiLang_V4.001.0000000.3.R.201022.zip
	NVR4-4KS2	DH_NVR4XXX-4KS2_MultiLang_V4.001.0000005.1.R.201126.zip
	NVR6-4KS2	DH_NVR6XX-4KS2_MultiLang_V4.001.0000001.1.R.200812.BIN

Category	Model	Version
IVSS	IVSS7XX	DH_IVSS7XX_Eng_V2.00 2.0000000.0.R. 201106.zip
EVS	EVS71	DH_EVS71XX_Eng_V4.0 01.0000002.0.R. 200909.BIN
	EVS5X	DH_EVS50XX_Eng_V3.2 10.0000002.5.R. 200911.bin
DSS	DSS Pro	General_DSS- Pro_Win64_IS_V8.000.0 000001.0.R. 20201215.exe
	DSS Express	General_DSS- Express_win32_IS_V8.00 0.0000000.1.R. 20201023.exe
Tools	Player	General_SmartPlayer- Win32_Eng_IS_V4.001.0 000003.0.R.220225.zip
	PlaySDK	General_PlaySDK_Eng_ Windows32_IS_V3.044.0 000002.1.R.210907.zip General_PlaySDK_Eng_ Windows64_IS_V3.044.0 000002.1.R.210907.zip
	NetSDK	General_NetSDK_Eng_ Win64_IS_V3.057.00000 00.0.R.230309.7z General_NetSDK_Eng_ Win32_IS_V3.057.00000 00.0.R.230309.7z
APP	DMSS	IOS: Download the latest version on App Store Android: Download the latest version on Google Play.

---

## 2 Update Guide

### 2.1 Introduction

This document provides multiple update methods for the IPCs. Users can update the IPC to the latest version according to the update guide. The update methods include updating by ConfigTool, through local update package, and cloud update on the webpage.

### 2.2 Preparation

Before the update, please make sure that the following prerequisites are met.

- Update by ConfigTool: The device can work normally; the computer is installed with ConfigTool; the device is on the same network as the computer; the update package is ready.
- Update by local package: The device can work normally; the device is on the same network as the computer that is used to log in to the webpage; the update package is ready.
- Cloud update on the webpage: The device can work normally and is connected to Internet; the device is on the same network as the computer that is used to log in to the webpage.



- Check whether the device model and program version are correct before the update.
- Decompress the compressed program package when updating by the ConfigTool and through the local package.
- In addition to the main package, there is the algorithm package (firmware.bin). When updating the system by ConfigTool and local package, update the main package first, restart the device, and then update the algorithm package. If you select cloud update, the algorithm package will be automatically updated.
- In addition to the main package, there is the FPGA program package. Update the main package first, and then update the FPGA program package after restarting the device.

### 2.3 Instructions

#### 2.3.1 Updating by ConfigTool

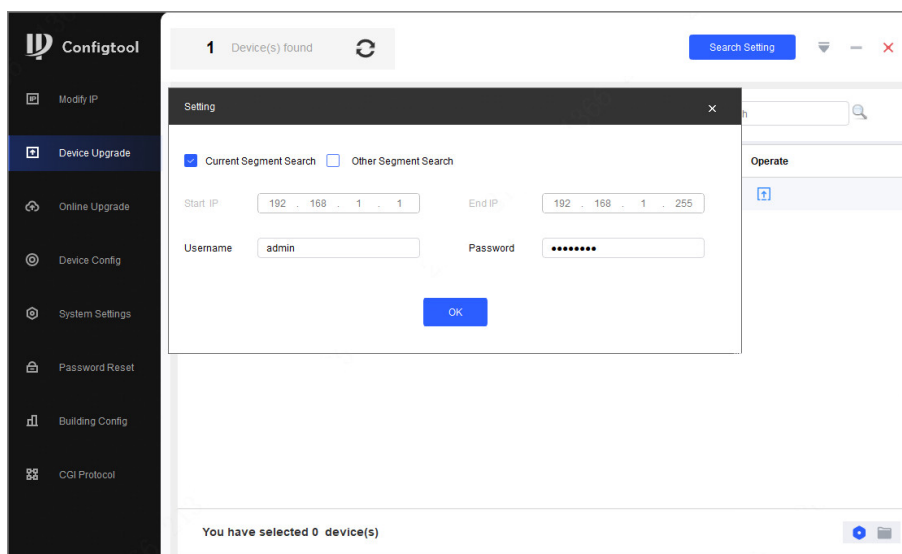
##### 2.3.1.1 Updating One by One

Use this update method when you need to update a single device.

##### Procedure

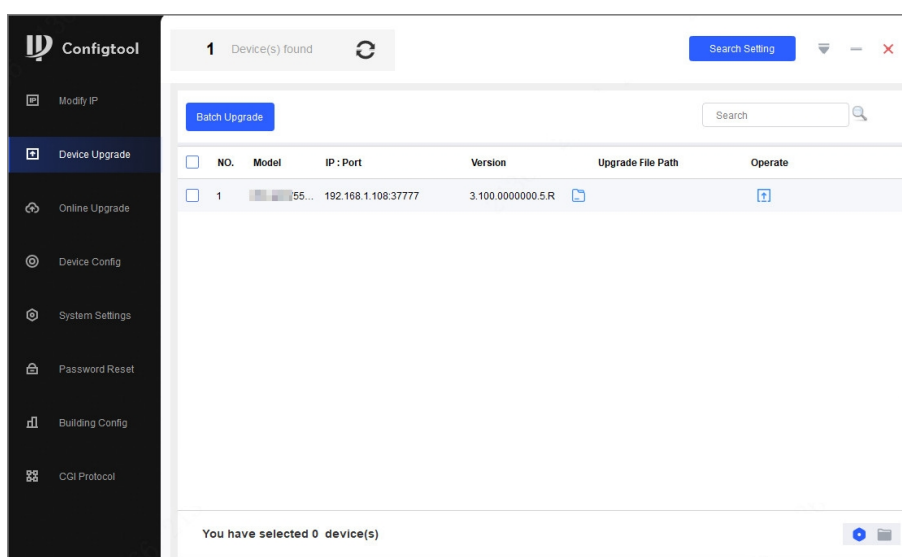
- Step 1 Open ConfigTool, and then select **Device Upgrade**.
- Step 2 Click **Search Setting** to set the search conditions.


Figure 2-1 Set search condition



**Step 3** Select **Current Segment Search**, change the password to the IPC password, and then click **OK**.

Figure 2-2 View search result



**Step 4** Click  next to the device to be updated, and then select the update file.

**Step 5** Click  to start to update the system.

The device automatically restarts after the update is complete.



If the system update fails, check the prompt on the ConfigTool to see the reason.

### 2.3.1.2 Updating in Batches

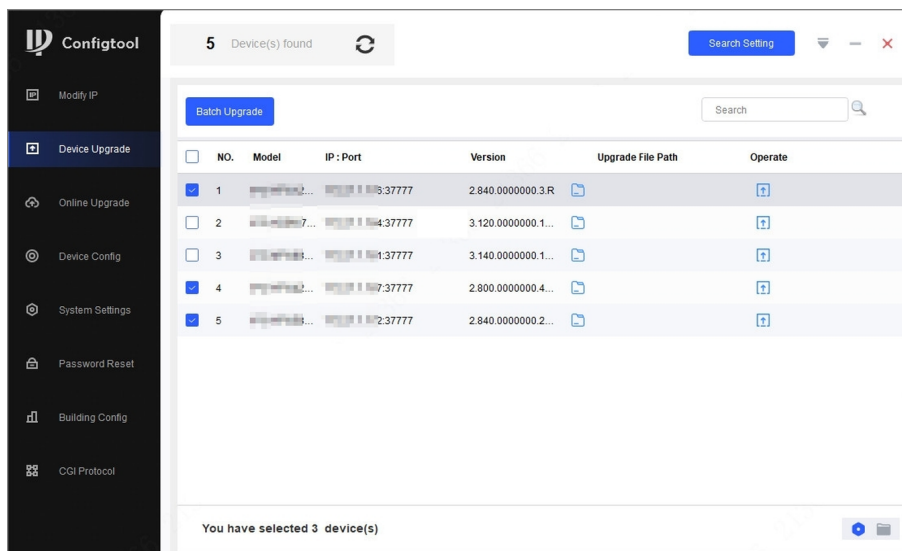
Use this method when you need to update multiple devices to the same software version.

#### Procedure

**Step 1** Open ConfigTool, and then select **Device Upgrade**.

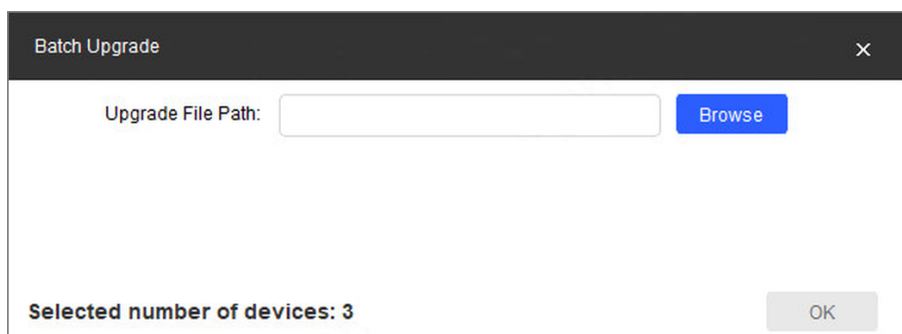
- Step 2** Click **Search Setting** to set the search conditions.
- Step 3** Select **Current Segment Search**, change the password to the IPC password, and then click **OK**.

Figure 2-3 View search result



- Step 4** Select the device to be updated, and then click **Batch Upgrade**.
- Step 5** Click **Browse** to select the update package.

Figure 2-4 Select update package



- Step 6** Click **OK** to start to update the system.
- The device automatically restarts after the update is complete.



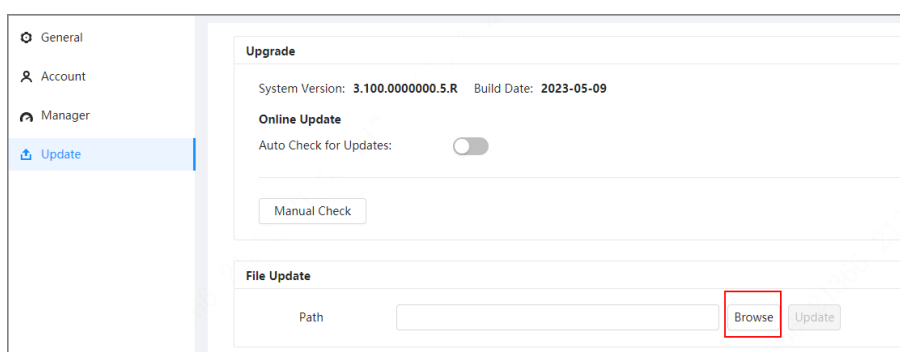
If the system update fails, check the prompt on the ConfigTool to see the reason.

## 2.3.2 Updating through the Webpage

### Procedure

- Step 1** Log in to the webpage of the device.
- Step 2** Select **Settings** > **System** > **Update** to enter the system update page.

Figure 2-5 System update



**Step 3** Click **Browse**, select the update file, and then click **Update**.

Do not cut off the power supply during the update process. The device automatically restarts when the update is complete.

**Step 4** After the restart, you are redirected to the login page for you to log in to the device again.

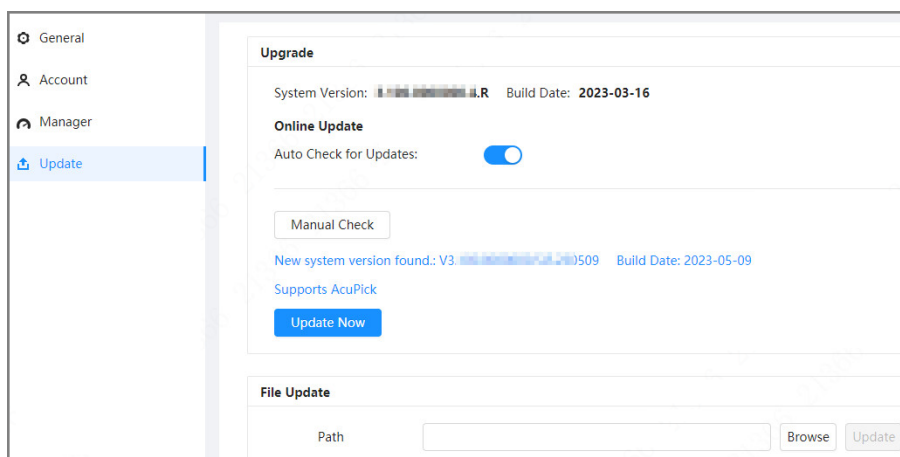
## 2.3.3 Cloud Update through the Webpage

### Procedure

**Step 1** Log in to the webpage of the device.

**Step 2** Select **Settings** > **System** > **Update** to enter the system update page.

Figure 2-6 System update



**Step 3** Click **Manual Check**.

Select Auto-check, and when a new version is available, the device automatically detects it.

**Step 4** If a new version is available, click **Update Now**. The system downloads the version file and starts the update process.

**Step 5** After the restart, you are redirected to the login page for you to log in to the device again.



## 2.4 Checking for Update Success

### 2.4.1 Checking the Result of Update by ConfigTool


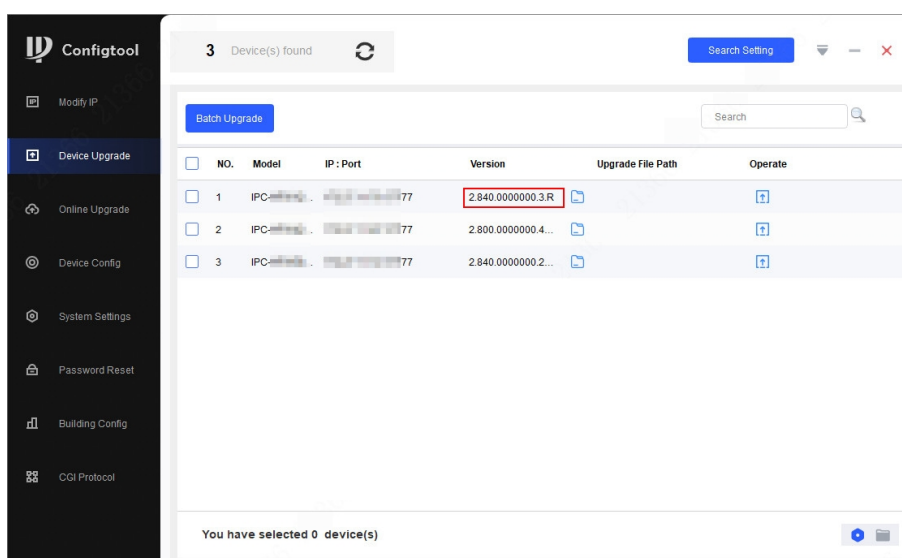
After the update is complete, wait until the device restarts. Click  to check the system version. If the version is the same as the software version of the update package, it means the update is successful.

Figure 2-7 Check version information



### 2.4.2 Checking the Result of Update through the Webpage

#### Procedure

- Step 1** Log in to the webpage of the device.  
**Step 2** Select **Settings** > **System Info** > **Device Info** to check the update result.

Figure 2-8 Check update result

