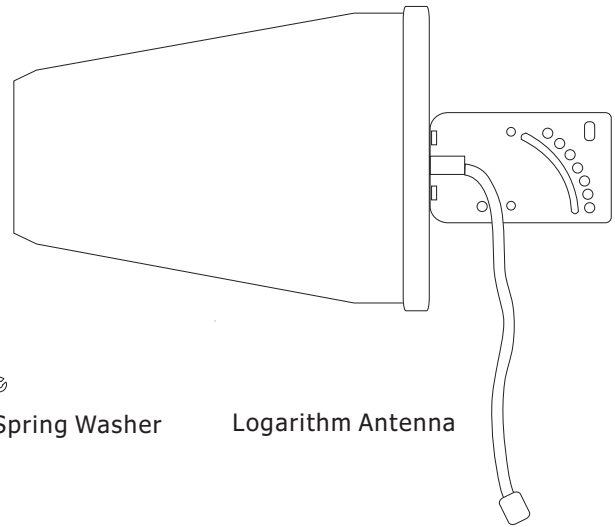


## MRE032

### Installation guidance of logarithm antenna

Logarithm antenna is an excellent triple antenna. It works on GSM900, GSM1800 and 3G networks. You can use it both for reception and broadcast.

Each set of logarithm antenna including  
 1 x Logarithm Antenna      2 x U Clam Hoop  
 2 x Attaching Damp        4 x Nuts  
 4 x Washers                 4 x Spring Washers



U Clam Hoop



Attaching Damp



Nut



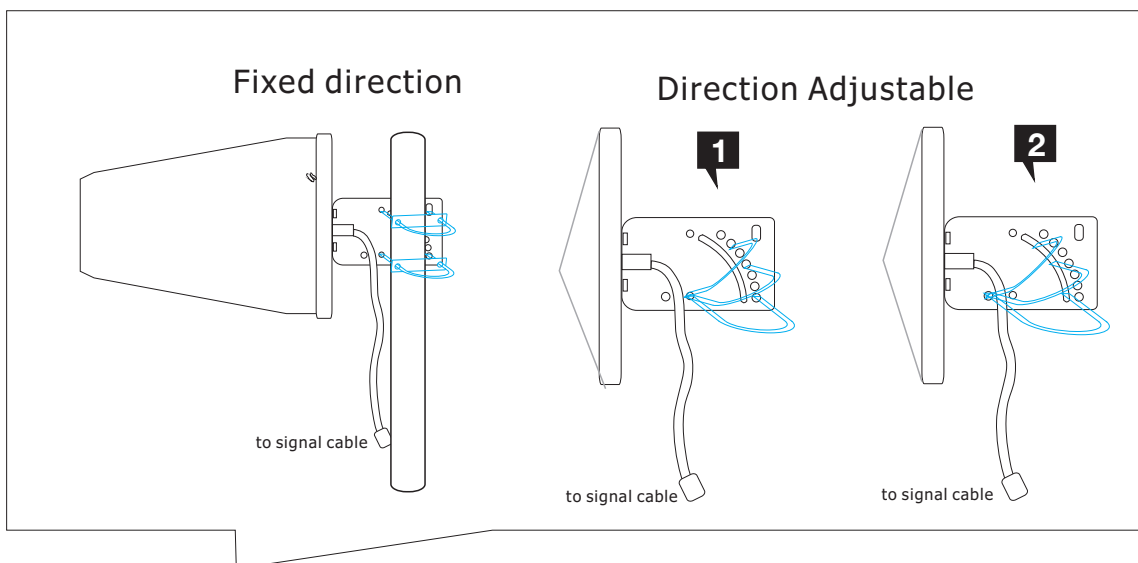
Washer



Spring Washer

Logarithm Antenna

### Install in outdoor on a pole



Please follow below steps to install logarithm antenna:

#### A. Install in outdoor on a pole to fixed direction

- 1> Put antenna in position then clip by "Attaching Damp"
- 2> Make "U Clam Hoop" get through attaching damp and antenna holes.
- 3> Then put on washers, spring washers and nuts in opposite side and fix nuts.

#### B. Install in outdoor on a pole and make direction adjustable

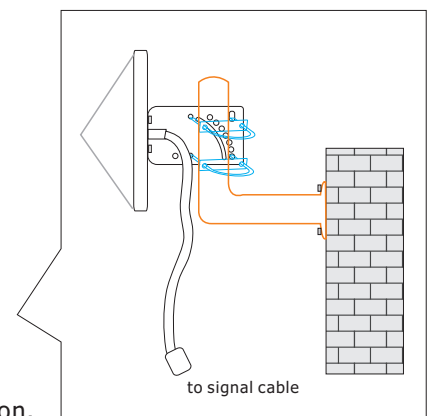
The kind of installation use only one kit of U clam hoop and attaching damp. Please refer to above #2 & #3 sketches to arrange installation. Please loose nuts connection before change direction.

#### C. Install on a wall

First of all you need to buy or make a stand as right sketch in orange color. Then follow up above 1st sketch to install on the pole.

Please choose the location which can capture strongest signals before installation.

### Install on a wall



**Remarks:** The poles and stand are not included.