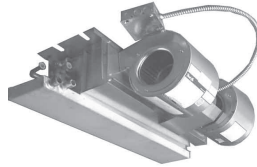


LG = Coil Face Length
 TH = Coil Face Total Height = 8"

First Co

HBC Series

Horizontal Fan Coil - Uncased
 Hydronic Cooling / Hot Water Heating



LG

20"

26"

30"

30"

36"

42"

49"

UNIT MODEL	BLOWER MOTOR (QTY)	BLOWER ASSEMBLY	BLOWER HSG. (QTY)	BLOWER WHEEL (QTY)	COIL ASSEMBLY					DRAIN PAN
					3 ROW	4 ROW	3/1 SPLIT	3/2 SPLIT	4/1 SPLIT	
3HBC	M4 (1)	330-1	210-1 (1)	W29 (1)	320-676	320-694	320-682	320-688	320-700	9-3HBCLDP (LH) 9-3HBCRDP (RH)
4HBC	M23 (1)	330-2	210-1 (2)	W31S (2)	320-677	320-695	320-683	320-689	320-701	9-4HBCLDP (LH) 9-4HBCRDP (RH)
5HBC	M23 (1)	330-3	210-1 (2)	W29 (2)	320-678	320-696	320-684	320-690	320-702	9-5HBCLDP (LH) 9-5HBCRDP (RH)
6HBC	M5 (1)	330-4	210-1 (2)	W31S (2)	320-678	320-696	320-684	320-690	320-702	9-6HBCLDP (LH) 9-6HBCRDP (RH)
8HBC	M14 (1)	330-5	210-1 (2)	W29 (2)	320-679	320-697	320-685	320-691	320-703	9-8HBCLDP (LH) 9-8HBCRDP (RH)
10HBC	M24 (1)	330-6	210-2 (2)	W32 (R) & W32-1 (1)	320-680	320-698	320-686	320-692	320-704	9-10HBCLDP (LH) 9-10HBCRDP (RH)
13HBC	M14 (2)	330-7	210-3 (4)	W28 (4)	320-681	320-699	320-687	320-693	320-705	9-13HBCLDP (LH) 9-13HBCRDP (RH)

NOTES:

1. Number in () is quantity per unit.
2. Units may be left or right handed.

Warning: Altering a First Co. product or replacing parts with non-authorized factory parts may result in adverse operational performance and / or a possible hazardous safety condition.

Left or Right determination is hub towards motor

W32 - Wheel 6-1/4D X 8-3/16W - W32 Right blower wheel for 10PHBC, 25-30CDX(HW)(Q) - (clockwise rotation) - Squirrel cage
 W32-1 - Wheel 6-1/4D X 8-3/16W - W32-1 Left blower wheel for 10PHBC, 25-30CDX(HW)(Q) - (counterclockwise rotation) - Squirrel cage
 Confirmed 06/04/12 w/ Roger Cross - KBJ

12PHBCX blower wheel W27 right CW, W27-1 left is CCW 6-3/4"x8-3/16"