

Truma Cooler

Portable Fridge / Freezer



Operating instructions

This document is part of the product.

**READ ALL INSTRUCTIONS BEFORE
USING THIS PRODUCT.**

Models

Single Zone Models

C36 / C44 / C60 / C73 / C105

Dual Zone Models

C69 DZ / C96 DZ

Truma Cooler

Table of Contents

Trademark information	2
Scope of delivery	2
Intended Use	2
Prohibited use	2
Important product information	4

Operating instructions

Product features	5
Control panel Single Zone	5
Control Panel Dual Zone	5
Turning the appliance on/off	5
Temperature setting	6
Temperature unit setting	6
Battery protect voltage setting	6
Bluetooth setting	6
Multi voltage system / Emergency Override	6
AC/DC, USB connection, fuse and emergency override in front	6
DC connection in the back	7
Two way opening and removable lid	7
Remove the lid	7
Attach the lid	7
Truma Cooler App Instructions	8
Cleaning	8
Troubleshooting	8
Fault indicator	9
Technical Data	10
“Truma Cooler” MANUFACTURER’S LIMITED WARRANTY	11

Intended Use

The appliance is designed for cooling and freezing foods.

The product is designed for camping and other mobile use.

This mobile appliance can be used in household and similar applications such as

- staff kitchen areas in shops, offices and other working environments
- farm houses
- clients in hotels, motels and other residential type environments
- bed and breakfast type environments
- catering and similar non-retail applications

The cooler is designed to be operated from:

- 12 V or 24 V DC on-board power supply of a vehicle or recreational vehicle
- 12 V or 24 V DC auxiliary battery
- 100 V - 240 V AC power supply (50 - 60 Hz)


Prohibited use

The product is not designed

- to be exposed to rain or wet environment,
- to be used as a household refrigerator
- to store chemicals and other non-food products,
- to be used for medical transportation

Safety instructions

Safety symbols and signal words

 This is the safety alert symbol. This symbol alerts you to potential hazards that can kill or hurt you and others.

⚠ WARNING indicates a hazardous situation which, if not avoided, could result in death or serious injury.

⚠ CAUTION indicates a hazardous situation which, if not avoided, could result in minor or moderate injury.



Other important information or tips

Trademark information

Truma Cooler referred to as Cooler below.

Scope of delivery

Quantity	Description
1	Truma Cooler
1	12/24 V DC connector cable
1	100 V - 240 V AC connector cable
1	QR Code

- **▲ WARNING** Risk of injury.
Do not operate the Cooler if it is visibly damaged.
- **▲ WARNING** Risk of electrical shock.
Do not use this product if any of the electrical cables, connections and plugs are trapped, worn, frayed or otherwise damaged. Always check cables for mechanical damage, cuts in the insulation, and heat/moisture damage before use.
– When positioning the appliance, ensure the supply cord is not trapped or damaged.
- **▲ WARNING** Risk of injury.
Repairs of the product should only be performed by a suitably qualified and authorized person (experts) using original manufacturer parts. Experts are persons who, based on their specialist instruction and training, their knowledge and experience with Truma products and the relevant standards, can carry out the necessary work properly and identify potential hazards.
Poor or faulty repairs could be dangerous and will void the warranty.
- **▲ WARNING** Risk of suffocation.
Do not allow children or pets to climb inside the appliance.
- **▲ WARNING** Risk of injury.
This appliance is not intended for use by persons (including children) with reduced physical, sensory or mental capabilities, or lack of experience and knowledge, unless they have been given supervision or instruction concerning use of the appliance by a person responsible for their safety.
- **▲ WARNING** Risk of injury.
This appliance is not intended for use by children without supervision. Children should be supervised to ensure that they do not play with the appliance.
- **▲ WARNING** Risk of electrical shock.
Do not expose the appliance to rain. The power connection must be especially protected against moisture and wetness. Protect the appliance from moisture and never put it in the water. Protect the appliance from salty air.
- **▲ WARNING** Risk of electrical shock.
Do not handle electrical connections with wet hands.
- **▲ WARNING** Risk of electrical shock.
Do not locate multiple portable socket-outlets or portable power supplies at the rear of the appliance.
- **▲ CAUTION** Risk of electrical shock and fire.
Do not place electrical items in the appliance.
- **▲ WARNING** Risk of injury.
The Cooler must be secured appropriately when it is transported in a vehicle. National rules and regulations must be observed. Do not drop the appliance. If the appliance falls down, have it checked by an expert.
- **▲ WARNING** Risk of injury.
Do not store dangerous items inside the appliance, such as e.g. spray cans, aerosol cans, explosives, and/or flammable liquids / propellants.
- **▲ WARNING** Risk of injury.
Any alteration to the appliance or its controls can cause unforeseen serious hazards and will void the warranty.
- **▲ WARNING** Risk of fire.
The use of wrong cable cross sections or damaged cables can lead to fire.
- For best performance operate the appliance in environments whereunder the ambient temperature is +10 °C / 50 °F to +32 °C / 89 °F. Beyond these temperatures performance will drop and power consumption increase. Do not operate the appliance in environments where the and max. ambient temperature exceeds +43 °C / 109 °F.
- Protect the appliance against open flames and hot surfaces.
- Do not fill appliance with water or other liquid for longer periods because the water acts as a breeding ground for bacteria. Also beware of melting ice when the temperature inside the appliance is not low enough. Food stored in the appliance shall be stored in appropriate containers.
- If your appliance has been turned off or lost power with food stored inside, exercise caution and do not consume the food.
- Do not attempt to remove frost from the appliance with a scraper or knife. Serious damage to the cooling system could occur.

- Buildup of heat in a vehicle can be extreme. The appliance will shut down at extreme temperatures if cooling is not possible.
- The Cooler must not be used at very dusty locations (e.g. at the beach), as dust and sand grains could be sucked in and damage the appliance.
- Changes or modifications not expressly approved by the party responsible for compliance could void the user's authority to operate the equipment.
- This appliance complies with Part 15 of the FCC Rules and with Industry Canada license-exempt RSS standard(s). Operation is subject to the following two conditions:
 - (1) this appliance may not cause harmful interference, and
 - (2) this appliance must accept any interference received, including interference that may cause undesired operation.

Cable cross Section in mm² (AWG)	12 V maximum cable length in m (ft)	24 V maximum cable length in m (ft)
2.5 (13)	2.5 (8.2)	5 (16.4)
4 (11)	4 (13.1)	8 (26.2)
6 (10)	6 (19.6)	12 (39.3)
10 (7)	10 (32.8)	20 (65.6)

- The appliance may make more noise if operated on a surface lean of over 15°, but this should not have an effect on refrigeration.
- When using the appliance ensure the circuit being used has a fuse or circuit breaker. The recommended size for DC 12 V is 10 A, DC 24 V is 5 A.
- Make sure that the voltage data on the type plate matches the existing power supply. Incorrect mains supply can damage the appliance. This is especially important for AC generators that can generate voltage spikes.
- If your appliance is plugged in to a DC vehicle socket, ensure that you disconnect from power when the vehicle is not in use to prevent battery drainage.
- Never disconnect the appliance by pulling the cable instead of the plug.

Important product information

- The appliance requires good ventilation, especially around the vents of the refrigerator. Ensure at all times that there is sufficient ventilation so that the heat that arises during operation does not build up. Make sure that the appliance is sufficiently far away from walls and other objects so that the air can circulate. Ensure that the ventilation openings are not covered.
- The lower the ambient temperature, the lower the power usage. In order to maximise efficiency keep the appliance in a cool location out of direct sunlight.
- Do not allow a large amount of ice to build up on the inside walls as this may impair cooling. Defrost by turning the appliance off, allowing the ice to melt and wipe out the water or remove the drain plug.
- It is recommended to operate the appliance on a flat surface, but it will operate at angles up to 30°.
- Damage may occur if the DC cable supply is not appropriately sized. This will cause low voltage. The table below provides recommended cable sizing from battery to appliance:

Operating instructions

Product features

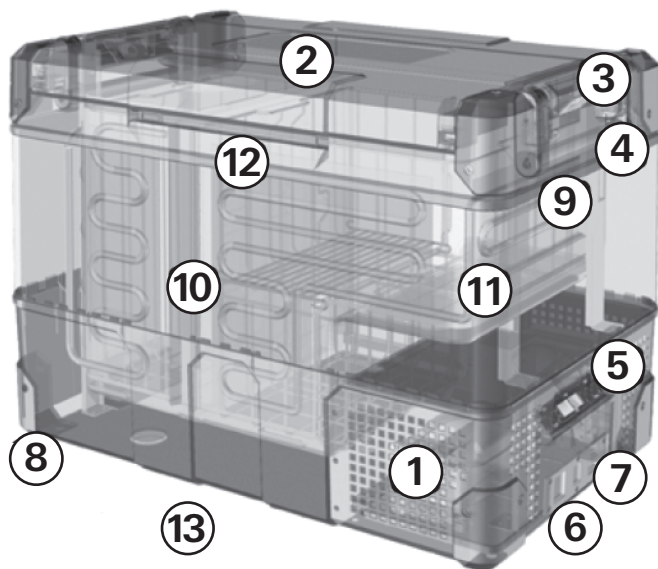


Fig. 1

1	Powered by 12 / 24 V DC compressor
2	Two way opening lid (not Model C36 / C44)
3	Bottle openers on both sides
4	Flat carry and tie down handles
5	Digital display for each compartment (only dual zones)
6	Multi-voltage system AC (100 - 240 V) and DC (12 / 24 V) - DC inlet on two ends
7	USB port and charger with 3 A
8	Stylish robust corners for protection
9	LED interior light
10	Divided compartment storage
11	Fully refrigerated stepped compartment
12	Headroom for upright standing bottles
13	Bluetooth App for mobile use

Control panel Single Zone (C30 / C36 / C44 / C60 / C73 / C105)

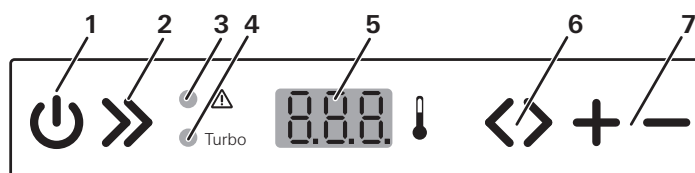


Fig. 2

Control Panel Dual Zone (C69 DZ / C96 DZ)

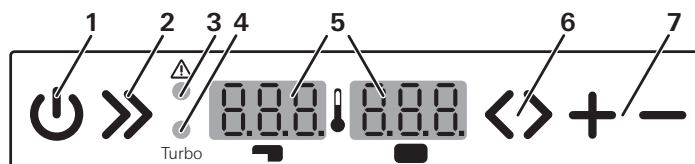


Fig. 3

1	Power switch
2	Turbo switch
3	Power indicator / Fault light
4	Turbo indicator light
5	LED-Display
6	Switch compartments / Mode
7	Temperature settings

Turning the appliance on/off

- Plug in the AC or the DC power cable. If the appliance does not start automatically, press the power switch to turn on the appliance. The LED display on the control panel will turn on and the interior temperature is displayed.
- Press the power switch for three seconds to switch off the appliance.

i The system will remember the previous settings when power is off. If the power supply is cut off or disconnected, the appliance will switch off automatically and once the power supply is restored it will automatically switch back on.

Temperature setting

i Temperature setting range $-22\text{ }^{\circ}\text{C}$ to $+10\text{ }^{\circ}\text{C}$ ($-8\text{ }^{\circ}\text{F}$ to $+50\text{ }^{\circ}\text{F}$) in each compartment

- Press the “switch compartments / mode” button and use the “temperature settings” buttons to increase or decrease the temperature.
- Press the “Switch compartments / Mode” button again to change the temperature setting in the second compartments (only Dual zone models).
- Press the “turbo switch” button for Turbo mode to increase the speed of the compressor. This setting can be used when you need to cool products quicker.

Temperature unit setting

- Press the “Switch compartments / Mode” button two times to switch between $^{\circ}\text{F}$ / $^{\circ}\text{C}$ for single zone models and three times for dual zone models. $^{\circ}\text{F}$ or $^{\circ}\text{C}$ will be shown at the display. Then press the “temperature settings” buttons to change.
- For the dual zone model, press “+” for three seconds, and you can switch off the cooling function of the compartment on the left. Also press “-” for three seconds, you can switch off the cooling function of the compartment on the right. Press the same button again for three seconds to re-start refrigeration in the corresponding compartment.

Battery protect voltage setting

- Press the “Switch compartments / Mode” button one more time after change $^{\circ}\text{F}$ or $^{\circ}\text{C}$, to enter battery protect voltage setting. Then press the “temperature settings” buttons to choose HI, MED or LO of protect level.

Battery protect level:	On (12 V)	Off (12 V)	On (24 V)	Off (24 V)
LO	$11.1 \pm 0.3\text{ V}$	$10.1 \pm 0.3\text{ V}$	$23.3 \pm 0.3\text{ V}$	$21.5 \pm 0.3\text{ V}$
MED	$12.2 \pm 0.3\text{ V}$	$11.4 \pm 0.3\text{ V}$	$25.3 \pm 0.3\text{ V}$	$24.1 \pm 0.3\text{ V}$
HI	$12.6 \pm 0.3\text{ V}$	$11.8 \pm 0.3\text{ V}$	$26.2 \pm 0.3\text{ V}$	$24.6 \pm 0.3\text{ V}$

Bluetooth setting

- Press the “Switch compartments / Mode” button one more time after battery protect voltage setting, to enter Bluetooth activity. Then press “temperature settings” buttons to choose ON or OFF.
- Press the “Switch compartments / Mode” button and “+” button for three seconds, at the same time to enter the Bluetooth mode.

CLO	Connect to the refrigerator by scan the QR code only.
OPE	Scan and find your refrigerator by mobile Bluetooth, and then connect.

Multi voltage system / Emergency Override

AC/DC, USB connection, fuse and emergency override in front

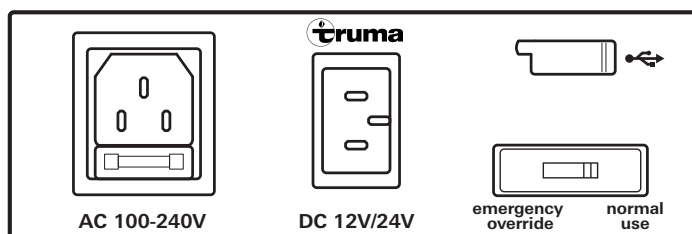


Fig. 4

Fuse

⚠ WARNING The fuse (6.3 A) may only be replaced by an expert.

Emergency Override Switch

For normal operation the switch is in the "NORMAL USE" position. If an electronic control or display board failure occurs, slide the switch to "EMERGENCY OVERRIDE" position. In this case, the cooler runs with full cooling capacity and may freeze.

DC connection in the back

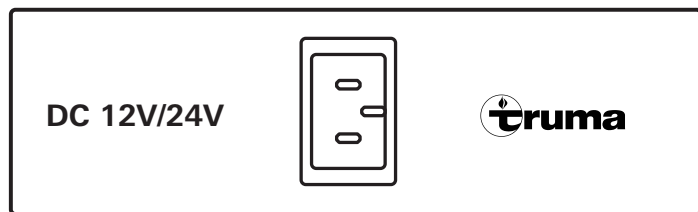


Fig. 5

The second DC socket allows the optimal use in every position.

Two way opening and removable lid

Remove the lid

Open the lid, push it over the aiming position and remove it (all models).



Fig. 6



Fig. 7

Attach the lid

Put the lid on the side of the box and press it down firmly (all models). On the following models the lid can also be put on the opposite side of the box. (C60 / C69 DZ / C73 / C96 DZ / C105)

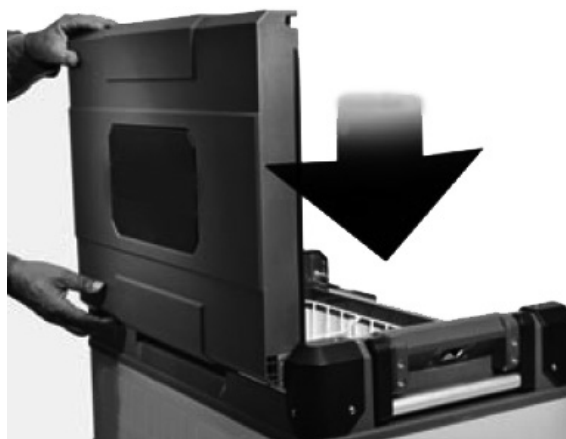


Fig. 8

Truma Cooler App Instructions

To control your Truma Cooler with your smartphone you can use the Truma Cooler smartphone app of Truma.

Activate the Bluetooth function of the appliance (see "Bluetooth setting" on page 6)

Activate the Bluetooth function of your phone and then download the Truma Cooler smartphone app from Google Play or Apple App Store.

When you open the app you will see picture **A**. Then you can click "Add device" to search the appliance, then you will see the available equipment, as shown in **B**.

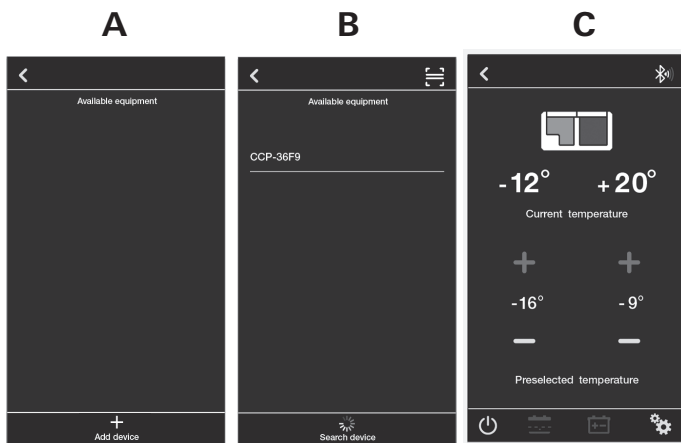



Fig. 9

When you click for example the equipment CCP-36F9 to connect the appliance, finally you will see picture **C** which means connect successful.

Or if you do not choose to click "Add device" but to choose  to scan the individual QR code which is delivered with the appliance for connecting, then will directly enter to picture **C**.

Now linked to your appliance, you can:

- Easily switch between appliances.
- Adjust your appliances temperature from -22 °C to +10 °C (-8 °F to + 50 °F).
- Check current temperature.
- Choose from Celsius and Fahrenheit temperature scales.
- Turn your appliance on and off.
- Turn Turbo modes on and off.
- Choose battery voltage protection mode.
- Monitor battery voltage.
- Show the fault reason automatically.
- Customize your refrigerator name.

Cleaning

⚠ WARNING Disconnect the appliance from the power supply before cleaning.

Clean the appliance inside and outside with a clean damp cloth every week. If it is dirty, use baking soda (sodium bicarbonate) dissolved in lukewarm water to clean the appliance.

Do not use abrasive products, detergents, soap or hard objects to clean as these can damage your refrigerator.

After cleaning, wipe out with a clean damp cloth and dry carefully.

Never clean the appliance under running water or in dish water.

Do not store products inside appliance if the appliance is not on.

Do not store the appliance if it is wet inside or without leaving the lid open.

Troubleshooting

The appliance is not turning on

- Check whether the appliance has been turned on.
- Check the power supply (try a different power source/vehicle/socket).
- Check whether the plug and the socket have a good connection.

Low refrigeration performance

- Too much product has been placed inside the appliance.
- There is too much warm product inside the appliance.
- The lid is unlatched or open.
- The lid seal is broken.
- Poor ventilation. Make sure that the appliance is sufficiently far away from walls and other objects so that the air can circulate. Ensure that the ventilation openings are not covered.
- The ambient temperature is too high.
- The temperature setting is too high.

Can hear the sound of running water from inside the appliance


- This is normal, due to the flow of refrigerant inside the appliance.

Unusual noise when refrigerator is working

- The refrigerator is not placed on a level surface

If none of the above solves your issue please contact the Truma Service Center (855-558-7862).

Fault indicator

 Please note that the fault indicator will always be green if normal. When flashing, it will change to orange color.

Errorcode (App)	Number of flashes (every 4 seconds)	Fault	Description / Solution
ER 0	-	Broken temperature sensor	<ul style="list-style-type: none">• When the LED display will show E0, means NTC (the temperature sensor) broken circuit or short circuit. Please contact the Truma Service Center for support.
ER 1	1	Low voltage	<ul style="list-style-type: none">• Try on different power source (vehicle or 240 V AC power). If changing power source fixed issue, then possible issue with original power source.• Ensure cabling between appliance and battery is at least 1.5 mm² (AWG 15), if the distance is more than 2 meters use at least 2.5 mm² (AWG 13) cable.
ER 2	2	Fan issue	<ul style="list-style-type: none">• Fan is drawing too many amps (over 0.6 amps).
ER 3	3	Compressor start issue	<ul style="list-style-type: none">• Unplug cable and allow appliance to rest for 10 minutes.• Try on different power source (vehicle or 240 V AC power).• Electronic box fault.
ER 4	4	Low motor speed	<ul style="list-style-type: none">• Reduce products/items inside appliance.• Move so appliance is in a lower ambient temperature, clean vents/ensure clear air flow over compressor.
ER 5	5	Over temperature	<ul style="list-style-type: none">• Move so appliance is in a lower ambient temperature.• Clean vents/ensure clear air flow over compressor.

If these measures do not remedy the malfunction, contact your dealership, Truma Service or one of our authorized Service Partners.

Technical Data

Model	C36 Single Zone	C44 Single Zone	C60 Single Zone	C73 Single Zone	C105 Single Zone	C69 DZ Dual Zone	C96 DZ Dual Zone
Dimen- sions in mm (in.)	Length 652 (25.7) Width 412 (16.2) Height 428 (16.9)	Length 652 (25.7) Width 412 (16.2) Height 488 (19.2)	Length 732 (28.8) Width 456 (18) Height 488 (19.2)	Length 732 (28.8) Width 456 (18) Height 555 (21.85)	Length 912 (36) Width 536 (21.1) Height 500 (19.7)	Length 732 (28.8) Width 456 (18) Height 555 (21.85)	Length 912 (36) Width 536 (21.1) Height 500 (19.7)
Weight in kg (lb)	21.8 (48.4)	23.4 (52)	25.6 (56.9)	28.2 (62.7)	33.2 (73.8)	29.4 (65.3)	34.9 (77.6)
Con- nection voltage	DC 12 / 24 V _{DC} or AC 100 - 240 V _{AC} / 50-60 Hz						
Rated current	12 V _{DC} 5.53 A	12 V _{DC} 5.49 A	12 V _{DC} 6.35 A	12 V _{DC} 6.10 A	12 V _{DC} 6.40 A	12 V _{DC} 6.30 A	12 V _{DC} 6.30 A
	24 V _{DC} 2.54 A	24 V _{DC} 2.81 A	24 V _{DC} 2.92 A	24 V _{DC} 3.00 A	24 V _{DC} 3.20 A	24 V _{DC} 3.10 A	24 V _{DC} 2.95 A
	120 V _{AC} 0.583 A	120 V _{AC} 0.63	120 V _{AC} 0.62 A	120 V _{AC} 0.66 A	120 V _{AC} 0.73 A	120 V _{AC} 0.63 A	120 V _{AC} 0.74 A
USB	5 V / 3 A						
Climate class	N, T						
Refrig- erant / quantity in g (lb)	R134a / 43 (0.08)	R134a / 45 (0.1)	R134a / 65 (0.15)	R134a / 70 (0.17)	R134a / 100 (0.19)	R134a / 75 (0.15)	R134a / 96 (0.22)
Cooling capacity	-22 °C to +10 °C (-8 °F to +50 °F)						
Volume in l (gal)	36 (9.5)	44 (11.6)	60 (15.85)	73 (19.28)	105 (27.7)	69 24 + 45 (18.2) (6.3 + 11.9)	96 41 + 55 (25.3) (10.8 + 14.5)

Truma Gerätetechnik GmbH & Co. KG
("Truma")

"Truma Cooler" MANUFACTURER'S LIMITED WARRANTY

(September 2014)

This limited warranty pertains solely to the "Truma Cooler" (Single Zone Models C36, C44, C60, C73, C105 and Dual Zone Models C69 DZ and C96 DZ) the "Product" manufactured by **Truma** and sold through its affiliates and dealers in North America.

Truma warrants subject to the below stated conditions that the Product will be free from defects in material and workmanship, and will perform in accordance with the technical specifications set forth in the description of the Product for a period of twelve (12) months for newly manufactured parts from the original date of purchase. The original purchaser is advised to register the Product within two (2) months of purchase at **www.truma.net** in order to receive an extended warranty of an additional twelve (12) months. This limited warranty shall only apply if the Product was properly installed according to the installation instructions provided and in compliance with applicable codes.

During the warranty period, Truma will repair or replace, at its own discretion and costs, the defective Product or parts or components of such Product reported to Truma and which Truma determines was defective due to a warranty defect. Costs of diagnosis for a warranty defect are borne by Truma. Other costs of diagnosis are not included in this warranty. At the discretion of Truma, the replacement of the Product or parts or components thereof (i) may be newly manufactured, (ii) may be assembled from new or serviceable used parts that are equivalent to new parts in performance, or (iii) may have been previously installed.

The customer shall not attempt to repair the Product or resolve the problem without the prior consent of Truma. Any attempt by the customer to repair the Product or resolve the problem without the prior consent of Truma will void this warranty.

This limited warranty does not cover any defects attributable in whole or in part to (i) non-Truma products and services and / or alterations of out-of-specification supplies, (ii) accidents, misuse, negligence or failure of the customer to follow instructions for the proper use, care and cleaning

of the Product, (iii) damages caused in gas pressure regulation systems due to foreign substances in the gas (i.e. oil, plasticizers), (iv) external factors (e.g., fire, flood, severe weather), (v) failure of proper transport packaging, or (vi) failure by the purchaser to comply with Truma's installation and user manual regarding the Product.

All warranty claims must be reported to Truma's authorized warranty service center in the United States:

**Truma Corp Service Center,
2800 Harman Drive, Elkhart, IN 46514,
toll free: (855) 558-7862, fax. (574) 538-2426,
service@trumacorp.com, www.truma.net**

The purchaser shall provide the following information regarding the potential warranty claim (i) serial number of the defective device, (ii) proof of purchase, (iii) purchaser's contact information.

EXCEPT AS EXPRESSLY STATED AND SET FORTH HEREIN, THERE ARE NO WARRANTIES OR REPRESENTATIONS, EXPRESS OR IMPLIED, CONCERNING THE PRODUCT AND NO SUCH WARRANTIES OR REPRESENTATIONS SHALL BE IMPLIED UNDER ANY APPLICABLE LAW, IN EQUITY OR OTHERWISE, INCLUDING WITHOUT LIMITATION, A WARRANTY OF MERCHANTABILITY, A WARRANTY OF FITNESS FOR A PARTICULAR PURPOSE, OR ANY OTHER WARRANTY WHICH MAY BE IMPLIED UNDER COMMON LAW OR UNDER THE UNIFORM COMMERCIAL CODE OF ANY STATE OR OTHER JURISDICTION OF THE UNITED STATES OF AMERICA.

Unless further limited herein, the entire liability of Truma and the customer's exclusive remedy for damages from any cause related to or arising out of a warranty defect, regardless of the form of action, whether in contract or in tort, will not exceed the amount of the purchase price for each purchase order for the Product which is the subject matter or directly related to the causes of action asserted.

Unless prohibited under applicable state law, in no event will Truma, its agents, subcontractors, affiliates, suppliers and employees be liable for (a) any incidental, indirect, special or consequential damages, including, but not limited to, loss of use, revenue, profits or savings, substitute rental or for any other reason, even if Truma knew or should have known of the possibility of such losses or damages, (b) claims, demands or actions against the customer by any person, except as provided by applicable law.

In case you encounter any problems,
please contact the Truma Service
Center at 855-558-7862 or one of our
authorized service partners. For details see
www.truma.net.

Please have the model number and serial
number (see type plate) handy when you
call.

Manufacturing

Truma Gerätetechnik
GmbH & Co. KG
Wernher-von-Braun-Straße 12
D - 85640 Putzbrunn
Germany
www.truma.com

Sales & Service

Truma Corp
2800 Harman Drive
Elkhart, IN 46514
USA
Toll Free 1-855-558-7862
Fax 1-574-538-2426
service@trumacorp.com
www.truma.net