

TROUBLESHOOTING

1. No action after switching on the power
 - a. Check the plug to see whether it touches well
 - b. Check the fuse to see whether it has been burned out
 - c. Make sure you use the safe ground wire and the voltage is correct
2. The smell comes out from the plate.

A slight hot smell comes out for the first few times as the plate with teflon coating or fabric, and the water in the sponge vaporizes. Please pay attention to ventilation and always keep an eye on the wires.

PREPARATION

It is necessary for you to prepare the following equipments and materials before doing your jobs.

1. Ink jet printer/ six-color printer (For example: Epson R-230 / R270 / R290 / T50)
2. CISS (Continuous ink supply system) Different models of ink jet printer will need different CISS.
3. Sublimation ink / heat transfer ink
4. High-temperature resistant tape
5. Sublimation paper / heat transfer paper (for ceramic and fabric)
6. Paper cutter
7. Press mug / cup and plate: normal mug and plate will not be used for press, only sublimation mug and plate can be used.

NOTICE

1. Be careful of high temperature heating elements.
2. Make sure the heating temperature and transfer time are correct and suitable.
3. In order to extend the service life, please turn off the machine for 15 minutes after it works for 4 hours continuously.
4. Warm-up time is about 20 minutes to 360F when use it for the first time.
5. The handle is tied up with a cable tie, please look out for your own safety when cut off the cable tie.

Multi-functional Heat Press Machine User's Manual



Pressing Technique

Voltage: 110V/60HZ

Temperature Range: 0-250°C (32°F-430°F)

Time Range: 0-999 seconds

INTRODUCTION

Multi-functional heat press machine is engineered to imprint a design or graphic on a substrate, such as a t-shirt, with the application of heat and pressure for a preset period of time. While heat presses are often used to apply designs to fabrics, they can also be used to imprint designs on mugs, plates and other products. Printing different products may require you to switch heating elements. Accessories can be switched/replaced easily and quickly.

This machine employs a flat platen to apply heat and pressure to the substrate. The heat platen, which will swing away from the lower platen is always face down, and regardless of the height of the product being pressed, it is always pressed evenly & level. At the same time, the control panel utilizes an easy to read display to show time and temperature simultaneously, and the temperature readout is accurate within $\pm 5^{\circ}\text{F}$. What's more, top of its class digital temperature and timer gauge provides accurate readings in both Fahrenheit and Celsius degree measure.

FEATURES

- Rugged and durable for years of trouble-free performance
- Full swing away design
- Thick items capable
- Micro processor precision heat and temperature gauge
- Padded reinforced double bar "strong handle" for easy high pressure application
- Adjustable low to high pressure clamp
- Electronic time control indicates completion of heat press cycle
- Heat indicating light

INTERFACE INSTRUCTION

The panel includes three parts: LED display, indicators and operating area.

● LED display

- a. Temperature display: display measured value under operation mode. Display parameter signal under parameter setting mode.
- b. Time display: display countdown time in seconds or minutes under operation mode. Display the corresponding parameter values under parameter setting mode.

● LED indicator





TIME: this indicator will keep flickering in the case of countdown, and then keeps lighting on after countdown .

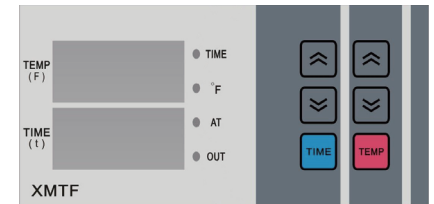
F: This indicator will light on if the machine is set in Fahrenheit degree.

AT: Autotune indicator.

OUT: this indicator will light up when the machine is heating and then light off once the machine stops heating.

● Operating area

- a. Time setting: press the button TIME when the instrument is under normal display mode. When the time screen illustrates time setting value, press  or  to adjust the time settings.
- b. Temperature setting: press the button TEMP when the instrument is under normal display mode. When the temperature screen illustrates temperature setting value, press  or  to adjust the temperature settings.

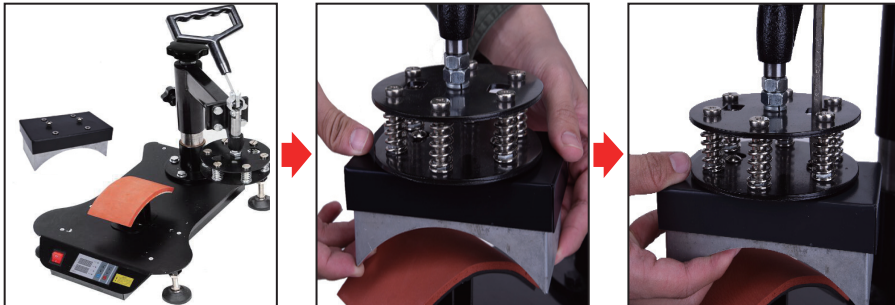


SPECIFICATIONS

4. Place a T-shirt or any flat surface item you may want to use dye sublimation for on the heat-resistant silica-gel sponge.
5. Place the transfer paper in desired position on the T-shirt. (Please note the right surface of the transfer paper)
6. Swing the heating plate back to the central and turn on the power switch.
7. Set proper temperature and heating time with 2in1 temperature/time controller. (The temperature will increase within 5-15 minutes)
8. When the temperature reaches to the required level, draw down the handle and press ▲ key, then the timer will count down automatically.
9. Pull up the handle and swing to open the heating plate when the alarm alerts.
10. Press ▲ key to cancel the alarm alerts.

The above process is also suitable for printing dishes, caps and mugs. As illustrated below:

Cap Printing



Mug Printing



Align the iron sheet into the upper attachment, and tighten it up. Afterwards, slide the mug mould into the two iron sheets, and it will be ready to be used.

SPECIFICATIONS

Single-Purpose Heat Press Machine

Platen Press	12" x 15"/15" x 15"
--------------	---------------------

5 in 1 Heat Press Machine

Platen Press	12" x 15"/15" x 15"
Hat/Cap Press	6" x 3"
Mug Press	3"-3.5" Diameter (11oz)
Plate Press #1	5" Max Diameter
Plate Press #2	5" Max Diameter

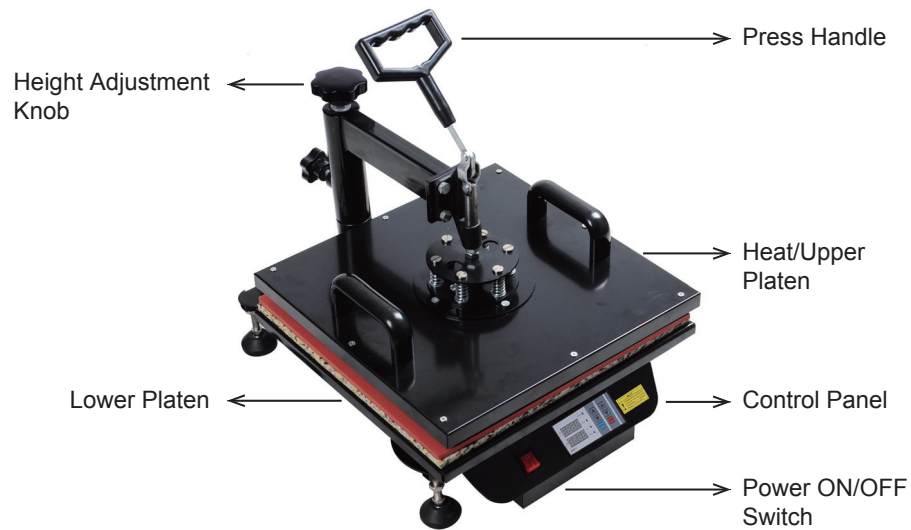
6 in 1 Heat Press Machine

Platen Press	12" x 15"/15" x 15"
Hat/Cap Press	6" x 3"
Mug Press #1	3"-3.5" Diameter (11oz)
Mug Press #2	12oz cone mug
Plate Press #1	5" Max Diameter
Plate Press #2	6" Max Diameter

8 in 1 Heat Press Machine

Platen Press	12" x 15"/15" x 15"
Hat/Cap Press	6" x 3"
Mug Press #1	2"-2.75" Diameter (6oz)
Mug Press #2	3"-3.5" Diameter (11oz)
Mug Press #3	12oz cone mug
Mug Press #4	17oz cone mug
Plate Press #1	5" Max Diameter
Plate Press #2	6" Max Diameter

PARTS LOCATION



Cone-Shaped
Mug Wrap x 1

Cylinder-Shaped
Mug Wrap x 1

Dish/Plate
Pad x 2

Hat/Cat Press Base
Set x 1



Screwdriver X 1

ASSEMBLY & OPERATION

Please note that this product must be grounded. In the event of an electrical short circuit, grounding reduces the risk of electric shock.

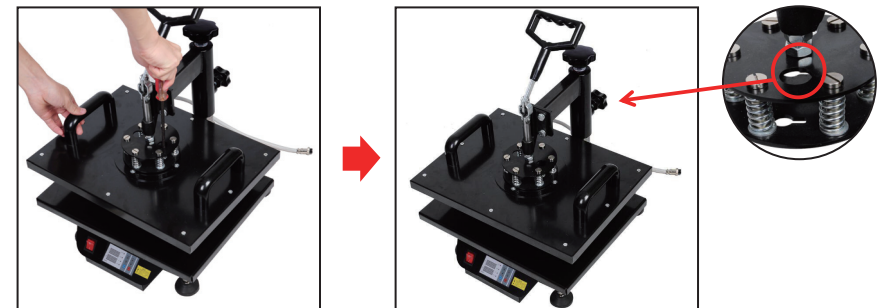
1. T-shirt Printing

Assembly



1. Align the lower platen on the main body. Make sure that they are completely aligned.
2. Mount the heating platen.
3. Tighten up the mounting screws.

NOTE Be sure to slide the heating platen into the slot which is marked with a red ring.



Operation

1. Install the T-shirt heat press attachment and connect the power cord.
2. Draw down the handle and adjust the height and pressure with pressure knob.
3. Pull up the handle and swing to open the heating plate.