



DANCE TEAM 2020



MOTIONWEAR®

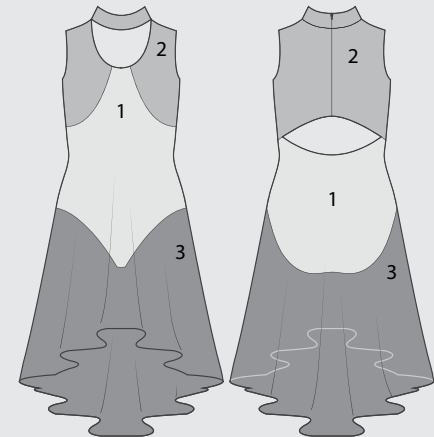
FLOW



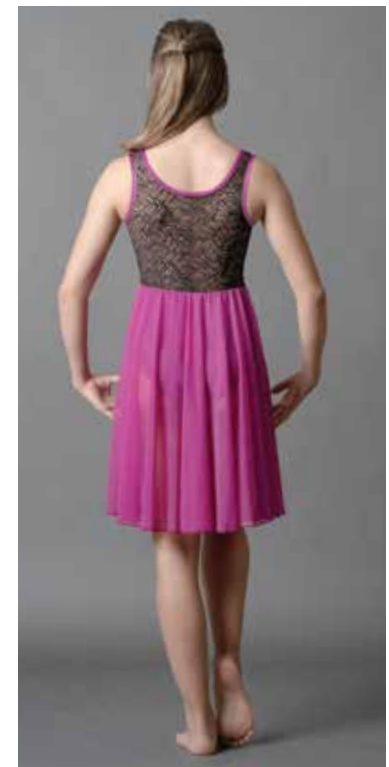
LINEART

See page 29 for all fabrics & colors available

8172



Sizes: MC-LC PA-3X



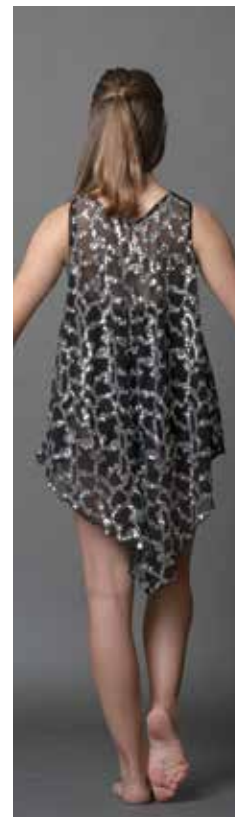




New!
8173
Dress
shown with
Basic Leotard

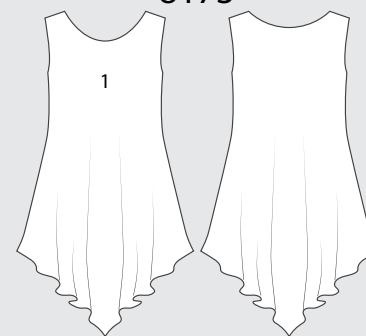
8182
Dress

New!
8173
Dress
shown with
Basic Leotard



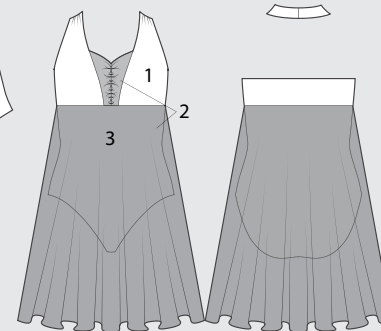
LINEART See page 29 for all fabrics & colors available

8173



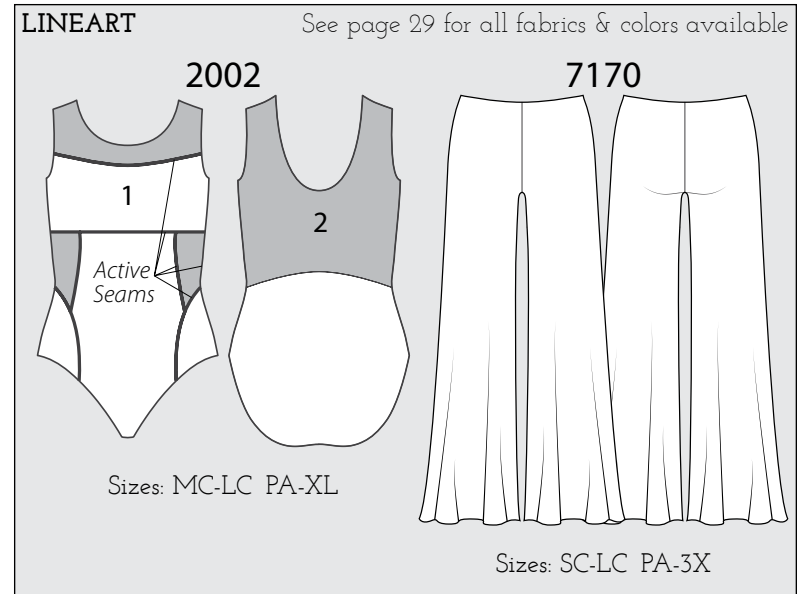
Sizes: MC-LC PA-3X
Pictured with
Motionwear Basic Leotard

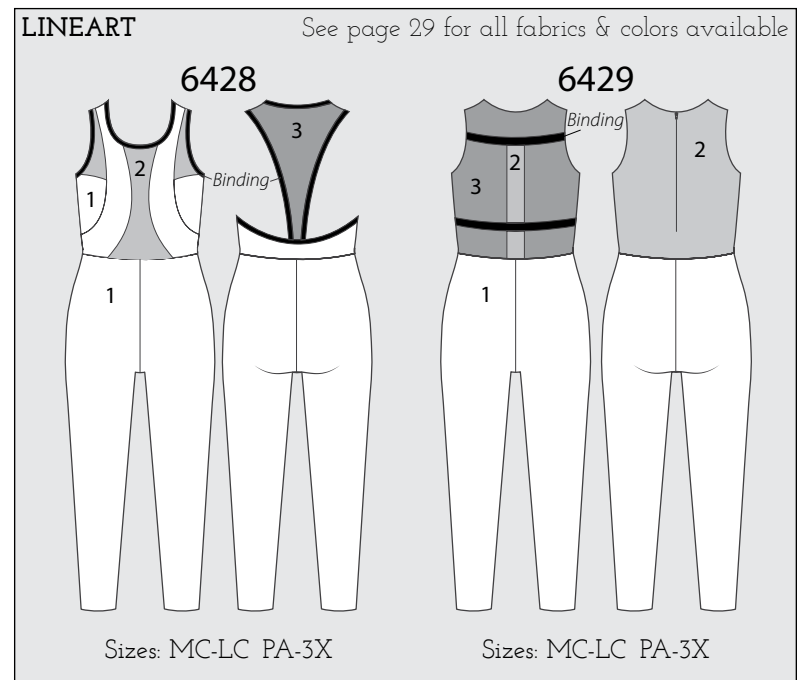
8182



Sizes: IC-LC PA-3X

LEAP







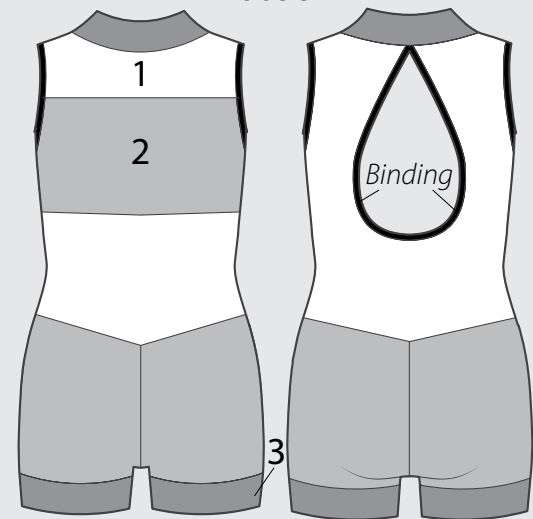
6658
Biketard



LINEART

See page 29 for all fabrics & colors available

6658



Sizes: SC-LC PA-3X

STRUT

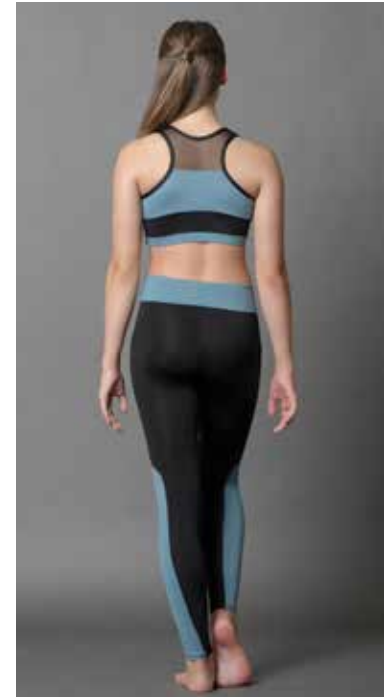


New!
3735
Crop Top

7113
Short

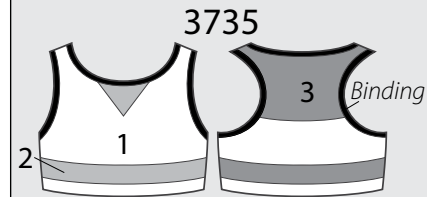
New!
3735
Crop Top

7274
Legging

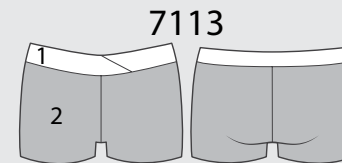


LINEART

See page 29 for all fabrics & colors available

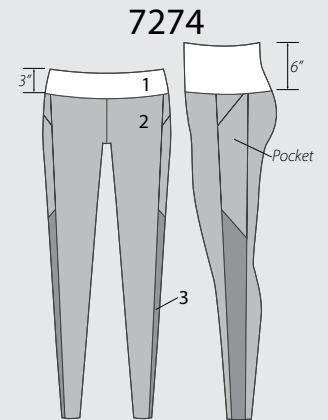


Sizes: MC-LC PA-3X



Inseam:
MC 2", MA 2 3/4"
Front Rise:
MC 8", MA 8 3/4"

Sizes: SC-LC PA-3X



Inseam:
MC 19 3/4", MA 25 3/4"
Front Rise:
MC 7 1/2", MA 8 3/4"

Sizes: XSC-LC PA-XL



3783
Crop Top

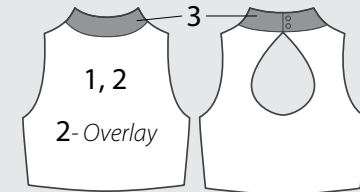
New!
1100
Skirt



LINEART

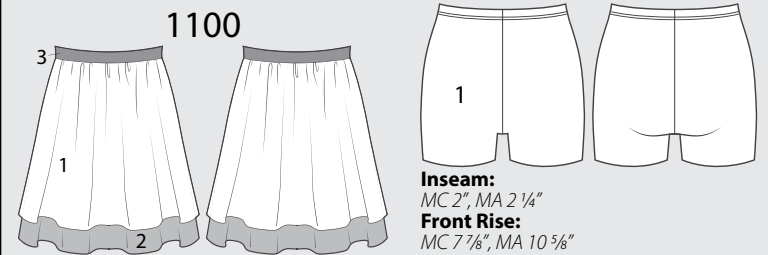
See page 29 for all fabrics & colors available

3783



Sizes: IC-LC PA-3X

7165



Sizes: MC-LC PA-3X

Sizes: XSC-LC PA-3X



LINEART See page 29 for all fabrics & colors available

3749

Sizes: MC-LC PA-3X

7163

Inseam:
MC 27 1/4", MA 35"
Front Rise:
MC 7", MA 7 3/4"

Sizes: SC-LC PA-3X

7165

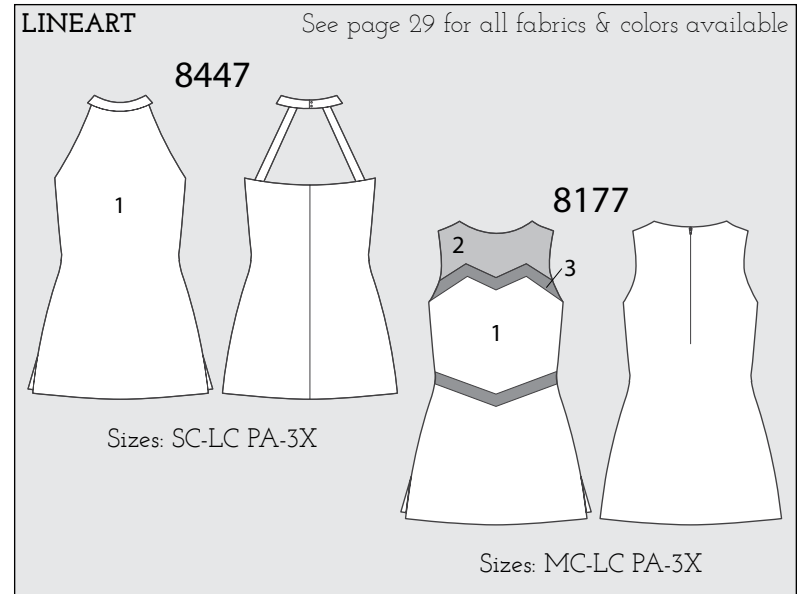
Inseam:
MC 2", MA 2 1/4"
Front Rise:
MC 7 7/8", MA 10 5/8"

Sizes: XSC-LC PA-3X

1100

Sizes: MC-LC PA-3X

RALLY





New!
8175
Dress

New!
8185
Dress





8456
Dress

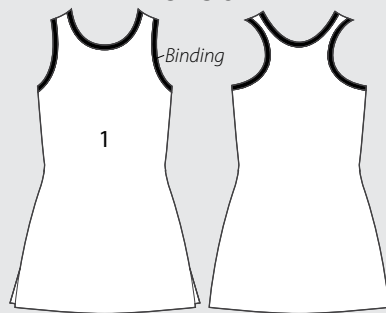
8234
Dress



LINEART

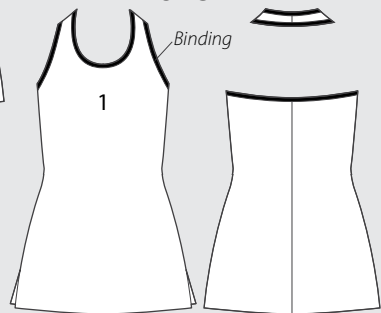
See page 29 for all fabrics & colors available

8456



Sizes: PA-3X

8234



Sizes: XSC-LC PA-3X

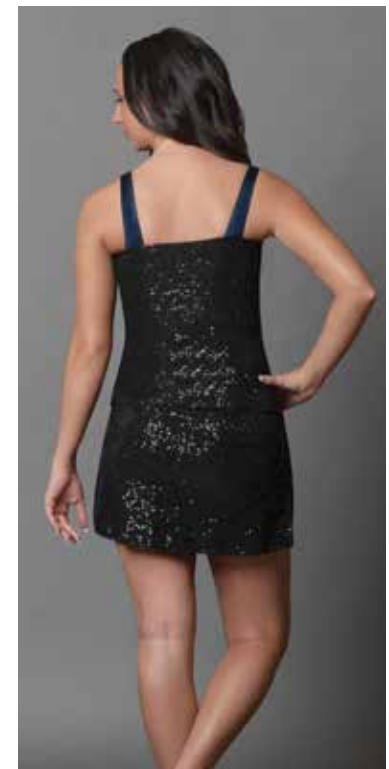


3468
Top

3690
Top

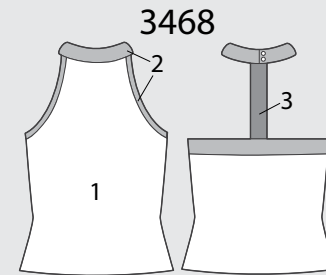
1035
Skirt

1035
Skirt

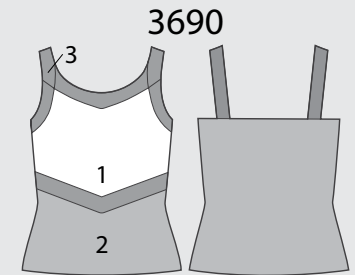


LINEART

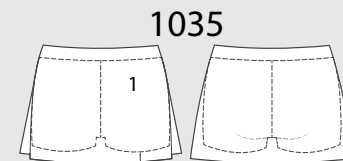
See page 29 for all fabrics & colors available



Sizes: SC-LC PA-3X



Sizes: IC-LC PA-3X



Inseam:
MC 1 1/2", MA 1 7/8"
Front Rise:
MC 7 3/4", MA 9 3/4"
2 Built-In
Shorts
Sizes: SC-LC PA-3X



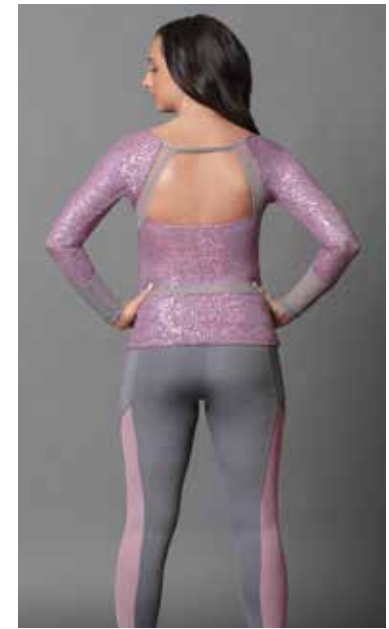
New!
3752
Top

New!
3753
Top

7018
Legging

7042
Legging

DAZZLE



LINEART

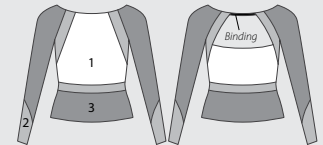
See page 29 for all fabrics & colors available

3752



Sizes: MC-LC PA-3X

3753



Sizes: MC-LC PA-3X

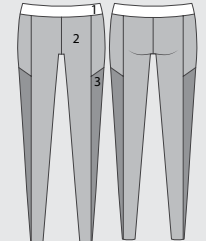
7018



Inseam:
MC 19 1/2", MA 29 1/4"
Front Rise:
MC 7 1/2", MA 9 1/2" - 12"

Sizes: SC-LC PA-3X

7042



Inseam:
MC 21 3/8", MA 27 3/8"
Front Rise:
MC 7 1/2", MA 8 3/4"

Sizes: IC-LC PA-3X



LINEART See page 29 for all fabrics & colors available

3748

Sizes: MC-LC PA-3X

7018

Inseam:
MC 19 1/2", MA 29 1/4"
Front Rise:
MC 7 1/2 - 9 1/4", MA 9 1/2 - 12"

Sizes: SC-LC PA-3X

3750

Sizes: MC-LC PA-3X

SHINE



LINEART See page 29 for all fabrics & colors available

3747

Sizes: MC-LC PA-3X

3679

Sizes: MC-LC PA-3X

7018

Inseam: MC 19 1/2" MA 29 1/4"
Front Rise: MC 7 1/2 - 9 1/4" MA 9 1/2 - 12"

Sizes: MC-LC PA-3X

3751

Sizes: MC-LC PA-3X



New!
3746
Top

3450
Top

7517
Legging

7517
Legging



LINEART See page 29 for all fabrics & colors available

3450

Sizes: IC-LC PA-3X

7517

Inseam:
MC 20", MA 26"
Front Rise:
MC 7 1/2", MA 8 3/4"

Sizes: IC-LC PA-3X

3746

Sizes: MC-LC PA-3X

MOVE



New!
3746
Top

New!
3672
Top

7123
Legging

7123
Legging



LINEART See page 29 for all fabrics & colors available

3746

Sizes: MC-LC PA-3X

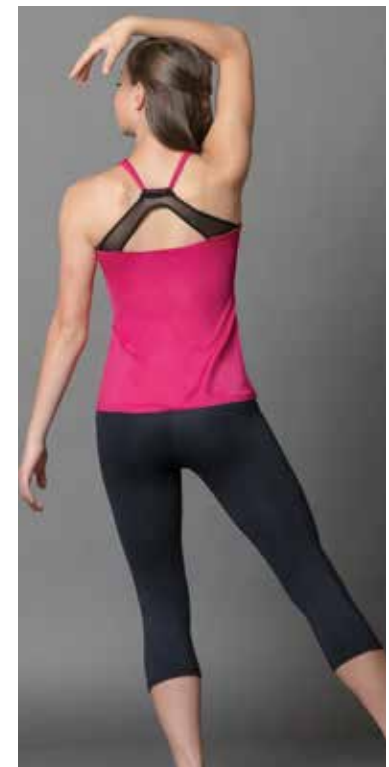
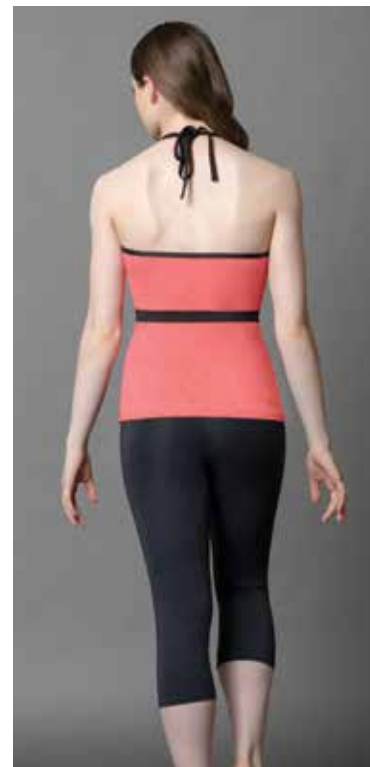
7123

Inseam:
MC 15", MA 18 1/2"
Front Rise:
MC 8 3/4", MA 8 3/4"

Sizes: XSC-LC PA-3X

3672

Sizes: MC-LC PA-3X



LINEART See page 29 for all fabrics & colors available

3679

Sizes: MC-LC PA-3X

7123

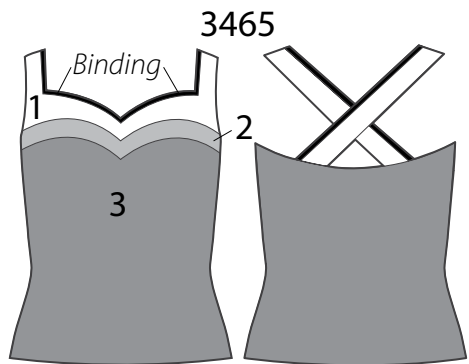
Inseam:
MC 15", MA 18 1/2"
Front Rise:
MC 8 3/4", MA 8 3/4"

Sizes: XSC-LC PA-3X

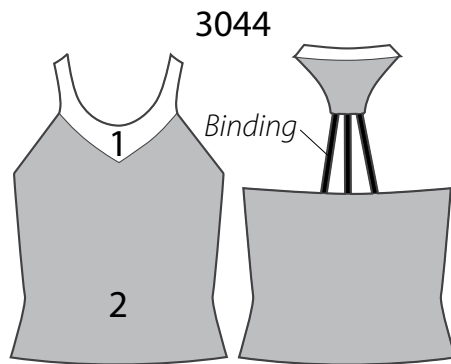
3747

Sizes: MC-LC PA-3X

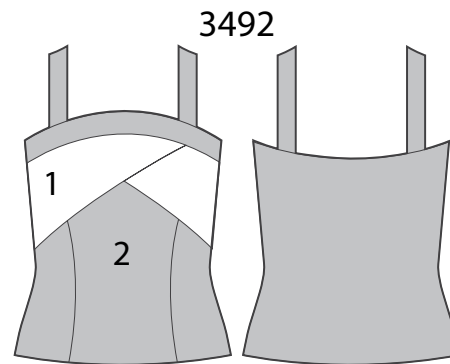
COLOR BLOCKS



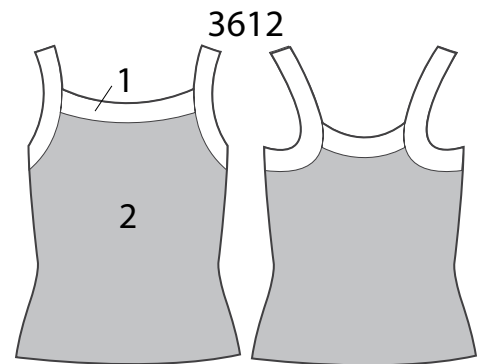
Sizes: XSC-LC PA-3X



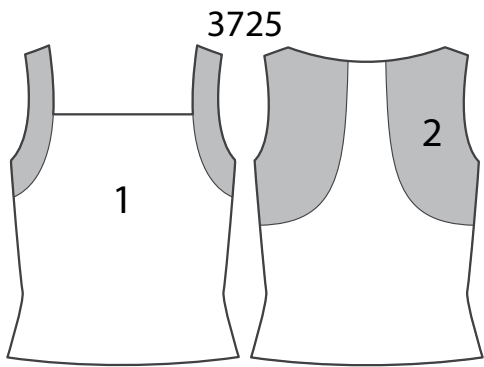
Sizes: XSC-LC PA-3X



Sizes: IC-LC PA-3X

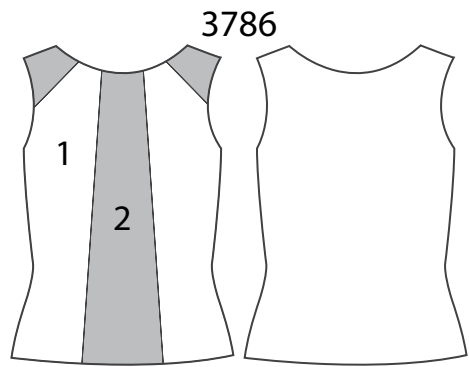


Sizes: MC-LC PA-3X



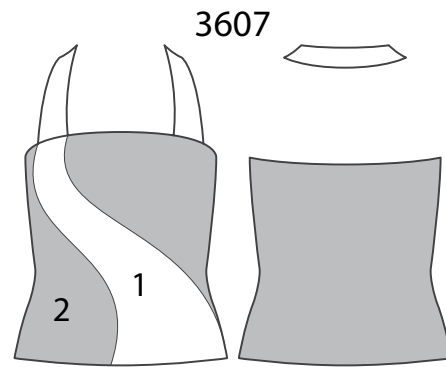
3725

Sizes: PA-3X



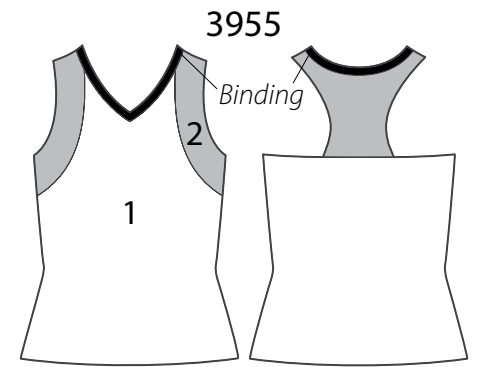
3786

Sizes: PA-3X



3607

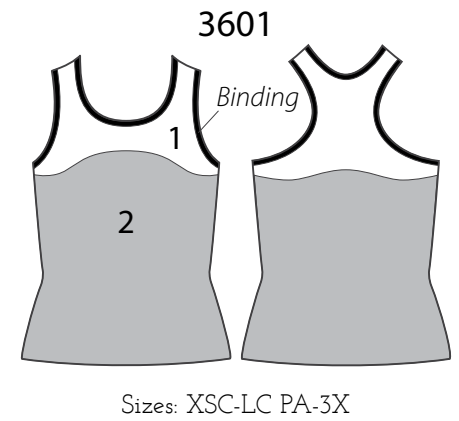
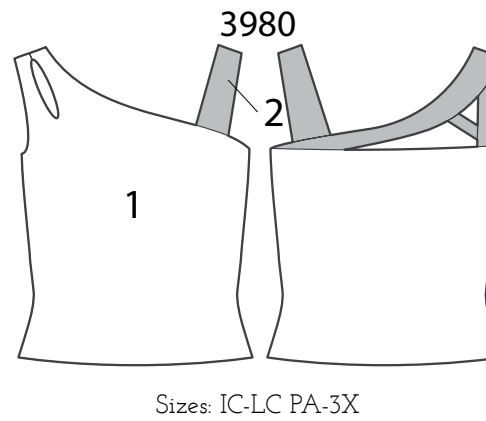
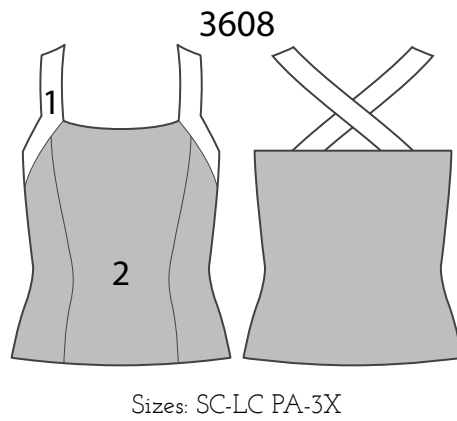
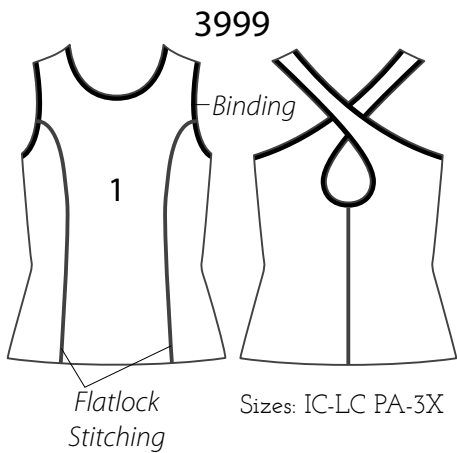
Sizes: XSC-LC PA-3X

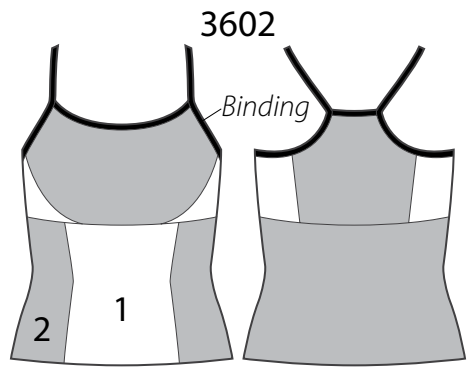


3955

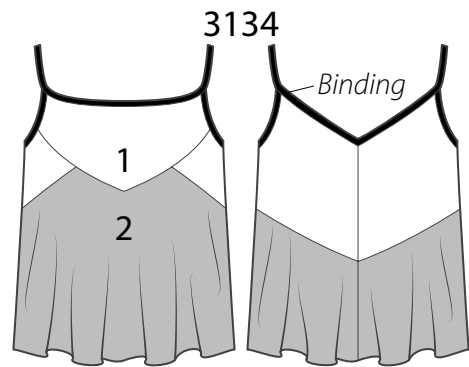
Sizes: PA-XL

COLOR BLOCKS

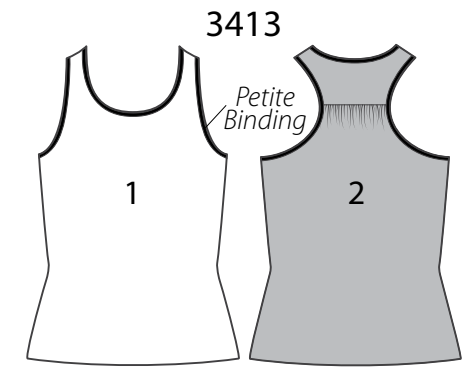




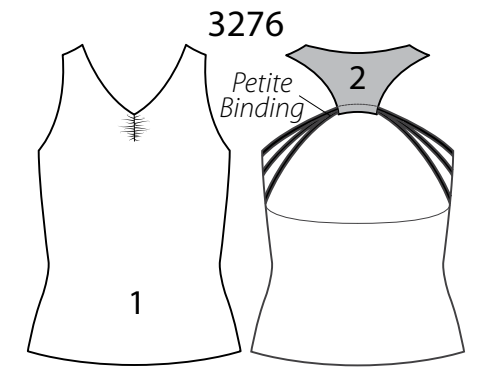
Sizes: IC-LC PA-3X



Sizes: PA-3X

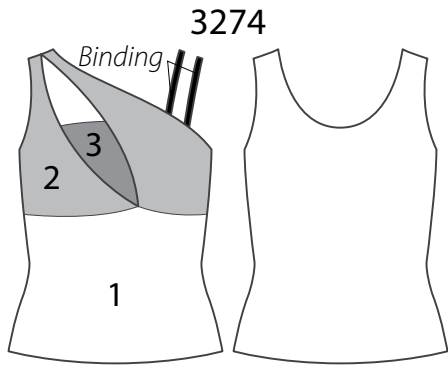


Sizes: SC-LC PA-3X

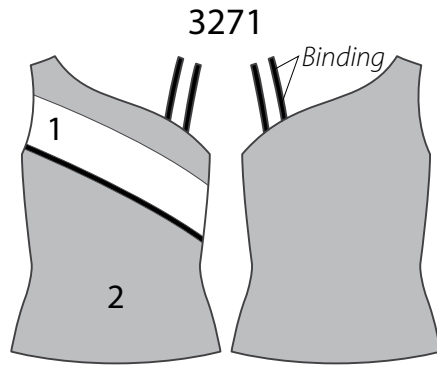


Sizes: PA-3X

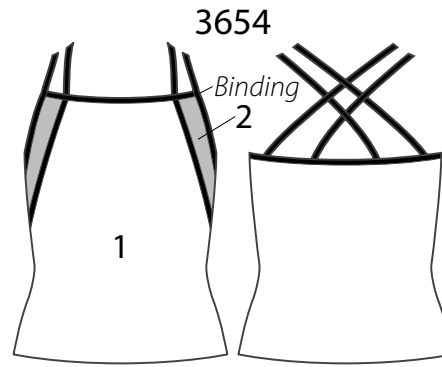
COLOR BLOCKS



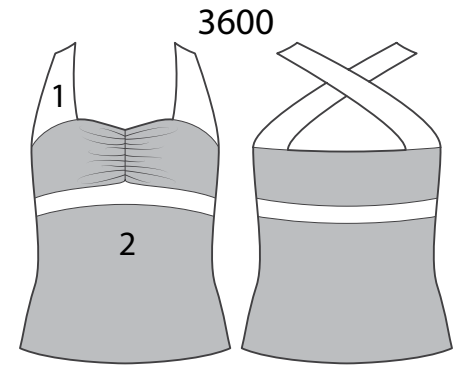
Sizes: PA-3X



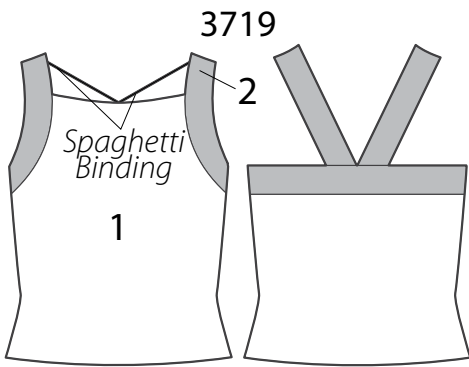
Sizes: SC-LC PA-3X



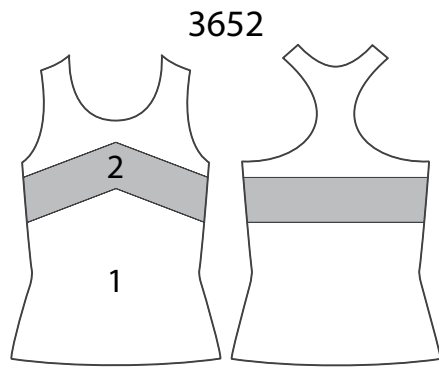
Sizes: IC-LC PA-3X



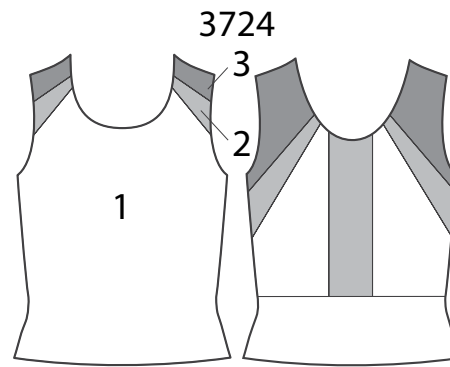
Sizes: SC-LC PA-3X



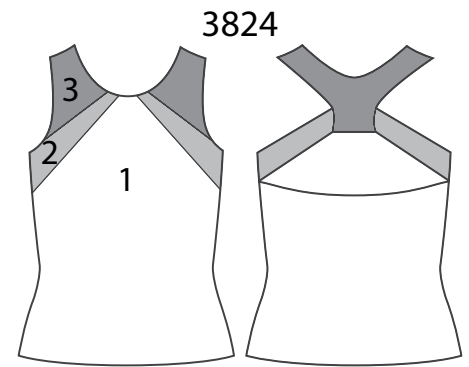
Sizes: XSC-LC PA-3X



Sizes: MC-LC PA-3X



Sizes: XSC-LC PA-3X



Sizes: XSC-LC PA-3X

UNDERWEARS



Style A: 2492 Leo
Sizes: IC-LC, PA-3X



Style B: 2487 Leo
w/ Removable Cups
Sizes: PA-XL



Style C: 2485 Leo
w/ Removable Cups
Sizes: PA-3X



Style D: 2225 Illusion Leo
Style E: 2930 Illusion Snap Crotch Leo
Bra Lining LC-XL
Removable Cups PA-XL
Sizes: SC-LC, PA-XL



Style E: 2493 Convertible Strap Bra
Sizes: MC-LC, SA-3X



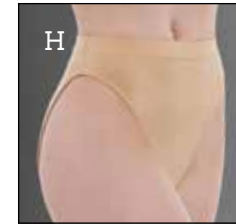
Style F: 2497 Convertible Strap Bra
w/ Removable Cups
Sizes: SA-3X



Strap Configurations
for Convertible Strap
Bra Tops 2493 and
2497



Style G: 2494 Brief
Sizes: XSC-LC, PA-3X



Style H: 7020 High-Cut Brief
Sizes: SC-LC, PA-XL



Style I: 7101 Low-Rise Brief
Sizes: XSC-LC, PA-3X

DANCE SOLES

- Lightweight design for comfort and protection
- Carefully patterned for ideal fit
- Thin and durable footpad for maximum floor feel
- Comfortable elastic gripper strip keeps Dance Sole and Cami Sole in place



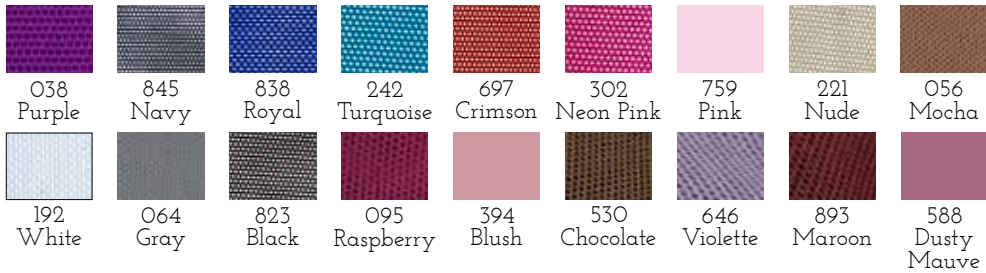
Style A: 383 Dance Sole
Sizes: LC, PA-XL



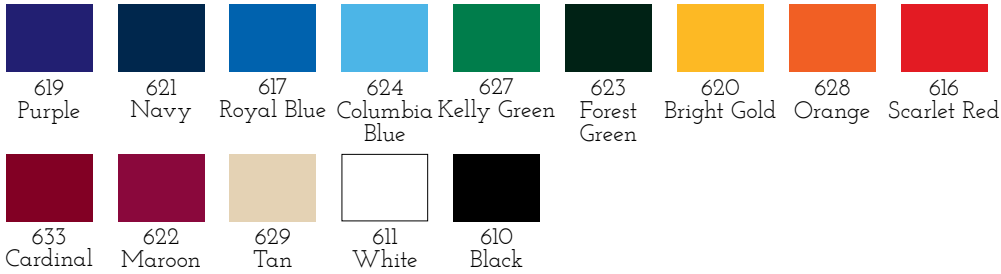
Style B: 388 Cami Sole
Sizes: PA-XL

FABRICS

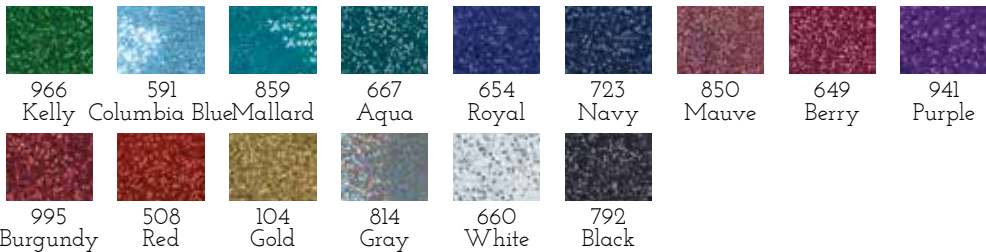
MESH Add sheer elements to your style with our quality stretch mesh fabric.
82% Nylon/18% Spandex.



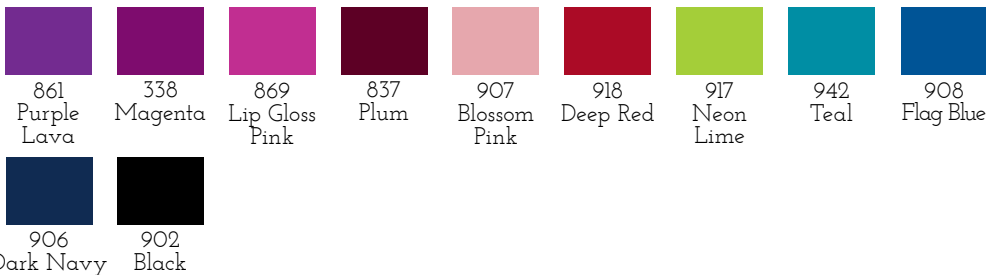
DRI-LINE Dri-Line Microfiber yarn allows fabric to breathe and wick moisture away from your body. 90% Microfiber Polyester/10% Spandex



SEQUINS Our exquisite stretch fabric embellished with sequin detailing will add sparkle to any look. 92% Polyester/8% Spandex



VELOUR Plush poly spandex velours offer comfort, durability, and a rich look and feel. 90% Polyester/10% Spandex

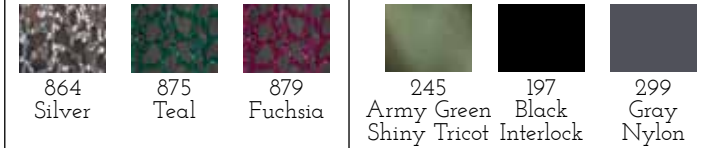


OTHER

SHIFTING WAVES LACE
82% Nylon/18% Spandex



MAKING WAVES SEQUINS
96% Polyester/4% Spandex

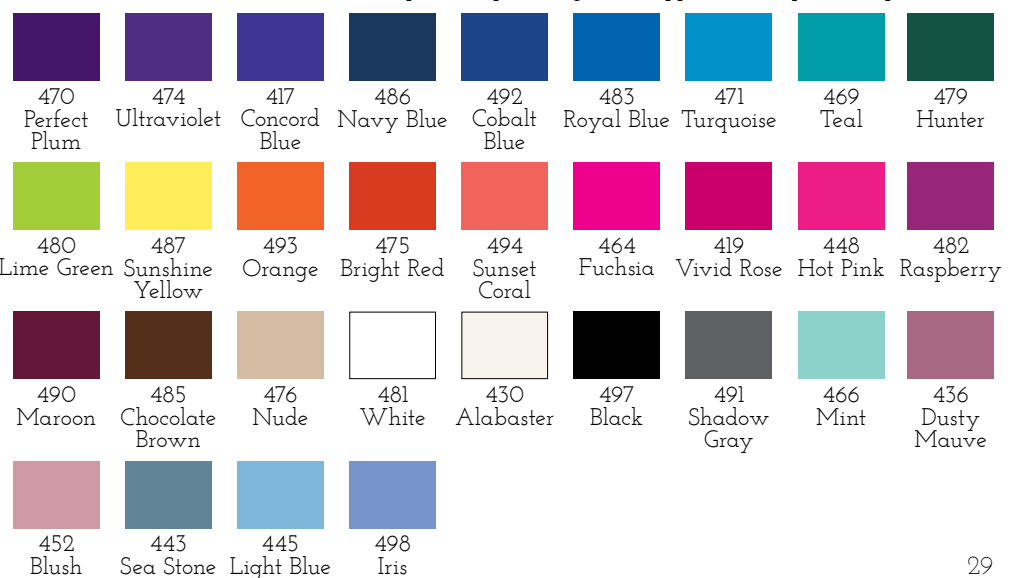


SHINE ON A dazzling effect of shine from a solid foil on a high quality spandex blend. 80% Polyester/20% Spandex.



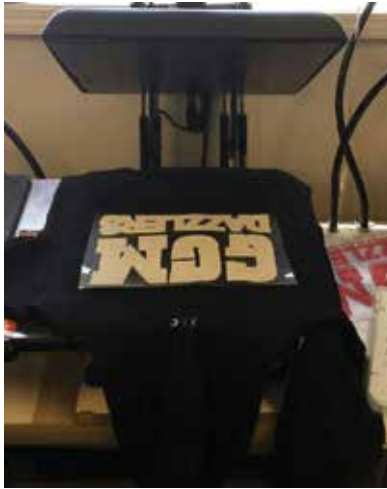
SILKSKYN

Silkskyn is a high-tech nylon spandex uniquely suited to the demands of the sport. Advanced microfiber design offers outstanding breathability. The stretch is comfortable, yet firm, providing extra support. 91% Nylon/9% Spandex



FLEX APPLIQUÉ

Flex appliqué, a shiny, matte, or glitter surfaced vinyl with a heat sensitive sticky backing, is an embellishment best selected when the number of garments will be twelve or fewer, or the design is very large and simple, preferably with only one color.



SCRIPT OPTIONS	BLOCK OPTIONS
<i>Brody</i>	AGENCY FB
<i>Lobster</i>	BULLET
<i>Adefebia</i>	FULL BLOCK
<i>Snapper Script</i>	MW SERIFA
<i>Bickley Script</i>	MYRIAD PRO
<i>Freestyle Script</i>	FRESHMAN
	AACHEN BOLD

FLEX COLORS

COLORS FOR NYLON

	White		Athletic Gold
	Black		Royal
	Silver Glitter		Red
	Gold Glitter		

MATTE

	Neon Orange		Sky Blue
	Flame Red		Light Blue
	Cardinal		Violet
	Bordeaux		Lilac
	Fuchsia		Purple
	Neon Pink		Aqua Green
			Forest Green

METALLIC & GLITTERS

	Silver		Jade		Aqua
	Multi		Emerald		Old Blue
	Light Multi		Light Green		Blue
	Grey		Green		Royal Blue
	Black Gold		Dark Green		Navy Blue
	Black		Lavender		
	Brown		Purple		
	Burgundy		Dark Purple		
	Red		Copper		
	Cherry		Light Gold		
	Pink		Gold		
	Hot Pink		Neon Opaque Orange		
	Holo Pink		Rainbow Opaque White		
			Silver Opaque White		

SCREENPRINT

Screen printing is best selected as an option for embellishment when the number of pieces in an order will exceed 12, the number of colors in the design is one to four and if screen print is the only embellishment that will be used for the design (i.e., no rhinestones or other heat press embellishments will be added later).



In addition, the screen printing process is able to reproduce much finer lines and details than flex appliqué or embroidery (with some exceptions), so use this option for large designs with many fine details or overlapping design elements. Motionwear has the ability to use many different types of inks, including metallic, glitters and others.

GLITTER INK

	Crystalina		Light Purple		Pink
	Silver Glitter		Western Blue		Rose
	Light Gold		Royal Blue		Regal Red
	Sahara		Navy		Apple Red
	Jet Black		Lime		

METALLIC INK

	Liquid Gold
	Liquid Silver

CRYSTALS & RHINESTONES

CRYSTALS:

Crystals provide unmatched beauty. Our crystals are hand-placed on necklines, cuffs and beside seams to create elegance.

Clear crystals are standard as shown on garments and Price List. Additional colors give your team a unique look and are available for an additional charge. See Price List for placement and options.

Standard Color												
												
60004 Clear	60400 AB	60408 Peridot	60405 Emerald	60423 Aquamarine	60404 Capri Blue	60421 Bermuda Blue	60413 Light Sapphire	60412 Sapphire	60417 Tanzanite	60440 Fireopal	60422 Cobalt Blue	
												
60402 Light Amethyst	60401 Amethyst	60410 Light Rose	60409 Rose	60406 Fuchsia	60411 Ruby	60414 Siam	60415 Light Siam	60439 Tangerine	60424 Citrine	60419 Light Topaz	60418 Topaz	
												
60403 Black Diamond	60407 Jet	60425 Silver Night	60429 Blue Zircon	60428 Jonquil AB	60426 Paradise Shine	60430 White Opal	60427 Montana	60435 Sapphire AB	60438 Burgundy	60436 Volcano	60437 Golden Shadow	

RHINESTONES:

Customize your team name, logo or design in rhinestones to create a unique look. Simply choose the rhinestone colors, placement and font, and Motionwear does the rest.

Clear rhinestones are standard on Motionwear designed appliqués. Custom colors are available for an additional charge.

Standard Color												
												
RH 1 Clear	RH 101 (AB) AB Crystal	RH7 Peridot	RH 8 Emerald	RH 9 Light Aquamarine	RH 10 Aquamarine	RH 10 (c) Dark Aquamarine	RH 11 Light Sapphire	RH 12 Sapphire	RH 13 Cobalt Blue	RH 16 Light Amethyst	RH 17 Amethyst	
												
RH 32 Tanzanite	RH 14 Light Pink	RH 15 Pink	RH 6 Light Siam	RH 5 Siam	RH 4 (+) Orange	RH 3 Topaz	RH 2 Light Topaz	RH 2 (c) Citrine	RH 22 Black Diamond	RH 21 Jet Black	RH 113 (AB) AB Light Sapphire	
												
RH 8 (+) Blue Zircon	RH 4 (++) Hyacinth	RH 24 (CO) Cosmo Black	RH 31 Montana	RH 103 (AB) AB Light Siam	RH 106 (AB) AB Topaz	RH 111 (AB) AB Light Aquamarine	RH 123 (AB) AB Rose	RH 126 (AB) AB Amethyst				

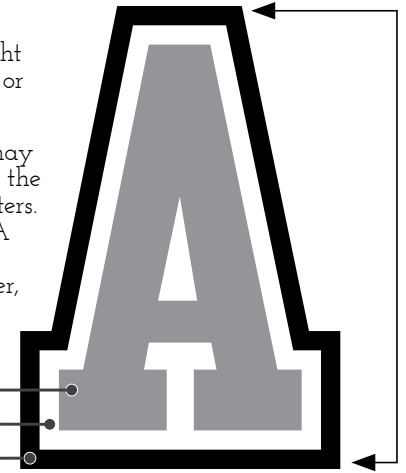
TACKLE TWILL & FABRIC LETTERING

LETTERING STYLE	FULL BLOCK	SERIFA	DISPLAY SANS	CLEAN SANS	FREESTYLE SCRIPT	STYLUS SCRIPT
BACKGROUND CONNECTED	BULLDOGS FBBC	BULLDOGS SEBC	BULLDOGS DSBC	BULLDOGS CSBC	<i>Bulldogs</i> FSBC	<i>Bulldogs</i> SSBC
INDIVIDUAL LETTERS	BULLDOGS FBIL	BULLDOGS SEIL	BULLDOGS DSIL	BULLDOGS CSIL	<i>B D G S</i> FSIL	<i>B T & S</i> SSIL
VERTICAL ARCH	BULLDOGS FBVA	BULLDOGS SEVA	BULLDOGS DSVA	BULLDOGS CSVA	<i>Bulldogs</i> FSVA	<i>Bulldogs</i> SSVA
ELEVATED ARCH	BULLDOGS FBEA	BULLDOGS SEEA	BULLDOGS DSEA	BULLDOGS CSEA	<i>Bulldogs</i> FSEA	<i>Bulldogs</i> SSEA
DOUBLE ARCH	BULLDOGS FBDA	BULLDOGS SEDA	BULLDOGS DSDA	BULLDOGS CSDA	N/A	N/A
BRIDGE	BULLDOGS FBBR	BULLDOGS SEBR	BULLDOGS DSBR	BULLDOGS CSBR	N/A	N/A
DIAMOND BRIDGE	BULLDOGS FBDB	BULLDOGS SEDB	BULLDOGS DSDB	BULLDOGS CSDB	N/A	N/A
REVERSE DIAMOND BRIDGE	BULLDOGS FBRB	BULLDOGS SERB	BULLDOGS DSRB	BULLDOGS CSRB	N/A	N/A
DOUBLE DIAMOND	BULLDOGS FBDD	BULLDOGS SEDD	BULLDOGS DSDD	BULLDOGS CSDD	N/A	N/A
LARGE CENTER LETTER	M W S FBLC	M W S SELC	M W S DSL C	M W S CSLC	N/A	N/A

HOW TO MEASURE YOUR LETTERING

Lettering is the top layer of the applique. The height is measured from top to bottom of the inside letter or number. This is the *letter size*.

The *embellishment size* called out on your proof may be slightly different. This measurement will reflect the overall size of the word, not just the individual letters. For example, the letter size for lettering style FBVA may be 3" tall but the embellishment dimension, measured from top to bottom of the outermost layer, may be 4" tall.



WHAT IS A LETTER VERSUS TRIM?

Lettering is shown in Gray (the top layer)
Trim 1 is shown in White (the next layer)
Trim 2 is shown in Black (the third layer)

EMBROIDERY

Logos and custom designed art is available with a digitizing fee. For names, ranks, school names, etc. please choose from these fonts.

RAQUEL Aldine 721 **RAQUEL** Athletic Block

Raquel Pen Tweaks *Raquel* Athletic Swoosh

Raquel Century *Raquel* Brush Script

RAQUEL Block

CUSTOM EMBROIDERED DESIGNS

Available in 2" or 3". Call us about custom embroidery.



SPECIALTY TACKLE TWILL AND FABRIC LETTERING STYLES



SIZING

Use the charts below as a general guideline for sizing Motionwear products. Sizing by this chart does not guarantee the best fit. We recommend fitting the actual garment and style to determine the best size suited to the individual. All sizes are measured in inches and available in a full range of Child (SC, IC, MC, LC) and Adult (PA, SA, MA, LA, XL) unless otherwise noted. Some styles are available in Extra Small Child (XSC) or 1X, 2X, and 3X Plus sizes; see symbols above.

CHILD SIZES

Size	Bust	Waist	Hips	Girth
XSC (2-3)	19-20	18-19	19-20	35-37
SC (4-6)	20-21	18-20	21-22	37-39
IC (6x-7)	22-24	20-21	23-25	40-43
MC (8-10)	25-27	21-23	26-28	44-48
LC (12-14)	26-29	23-25	29-31	49-52

PLUS SIZES

Size	Bust	Waist	Hips	Girth
1X	43-45	36-39	45-48	67-70
2X	45-48	39-43	48-51	70-73
3X	48-50	43-46	51-54	73-76

ADULT SIZES

Size	Bust	Waist	Hips	Girth
PA	30-32	23-25	31-34	51-54
SA	30-33	23-26	33-35	54-57
MA	34-37	25-28	35-38	57-60
LA	37-41	28-32	38-42	61-64
XL	41-43	32-35	42-45	64-67

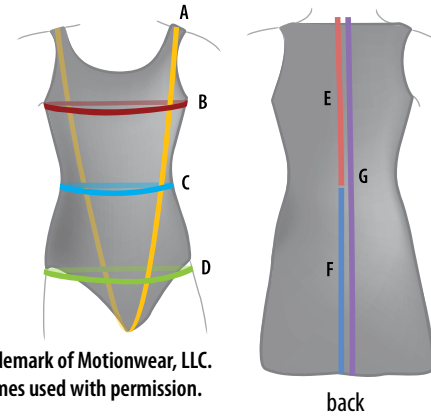
MEN'S SIZES

Size	Chest	Waist	Hips	Girth
SA	35-37	28-31	35-37	59-62
MA	37-40	31-33	37-40	62-65
LA	40-43	33-35	40-43	64-67
XL	43-45	35-37	43-45	67-70

FOOTWEAR SIZES

Size	Foot Width
LC	2¾" - 3"
PA	3" - 3¼"
SA	3¼" - 3½"
MA	3½" - 3¾"
LA	3¾" - 4"
XL	4" - 4¼"

HOW TO MEASURE



- A) Girth:** Measure from the center of the shoulder, down the front, through the legs, and up the back to the starting point on the opposite shoulder.
- B) Bust/Chest:** With arms down, measure around the fullest part of the chest.
- C) Waist:** Measure around the body at the natural waistline.
- D) Hips:** Measure around the body at the fullest part of the seat.
- E) Back Length:** Measure from the most prominent bone at base of neck to the natural waistline.
- F) Skirt Length:** Measure from natural waistline to desired skirt length.
- G) Dress Length:** Measure from the most prominent bone at the base of the neck to desired dress length.

Motionwear® is a registered trademark of Motionwear, LLC. All school names/trademark names used with permission.

FABRIC CARE

Products to solve stain and odor problems.



\$12.99

ODOR ELIMINATOR (8 oz.)
9115-099



\$9.99

STAIN REMOVER (16 oz.)
9116-099



\$24.99

LAUNDRY DETERGENT (45 oz.)
9114-099 (45 Loads)

\$2.00

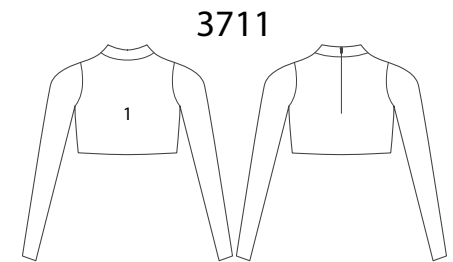
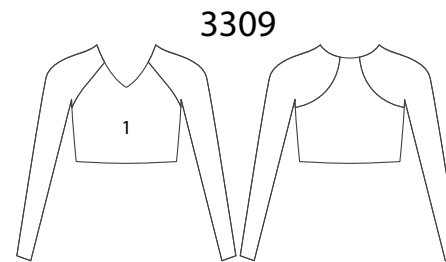
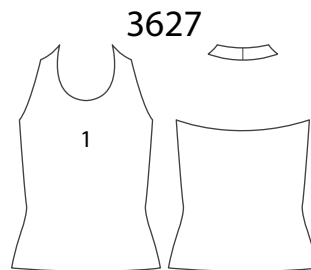
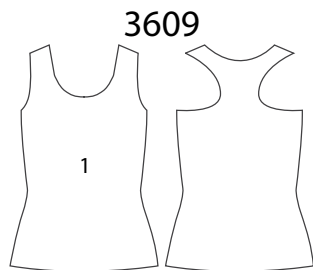
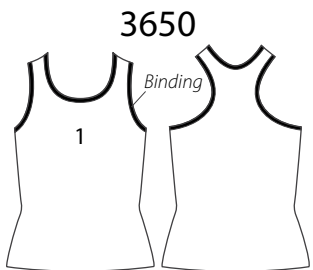
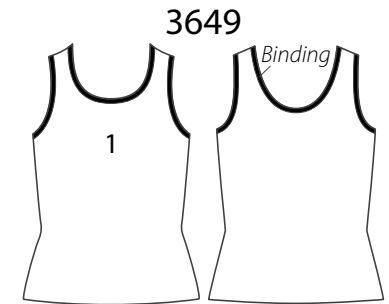
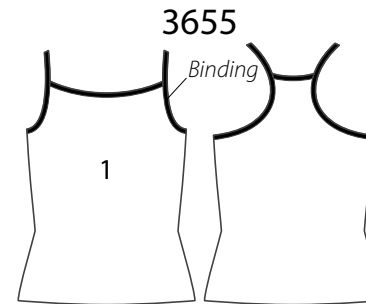
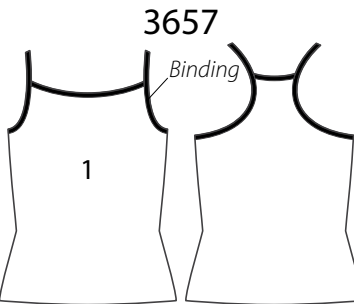
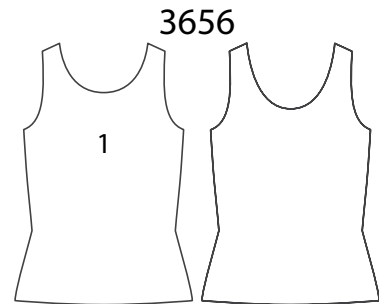
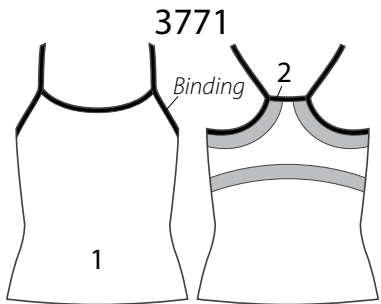
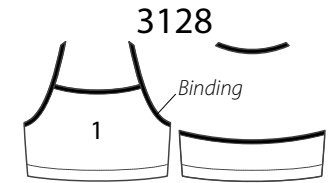
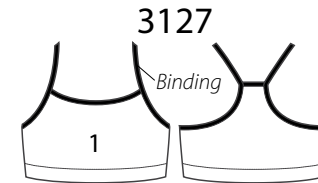
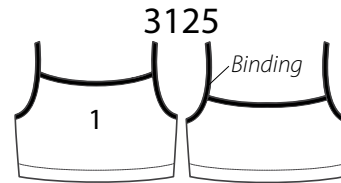
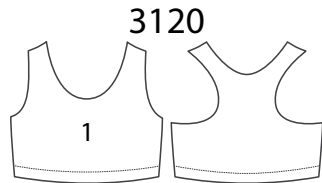
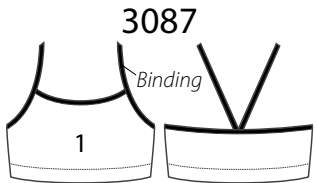
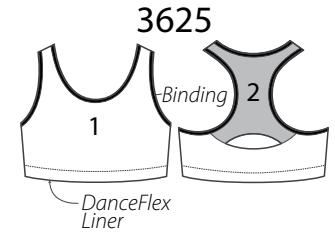
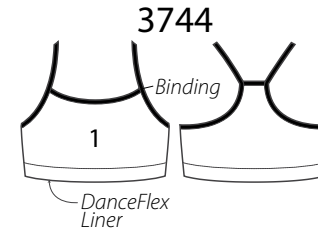
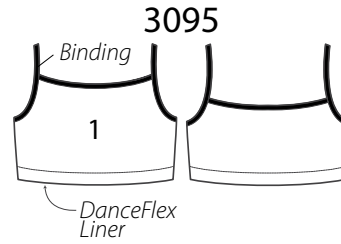
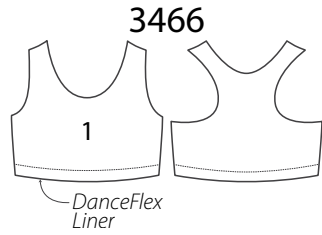
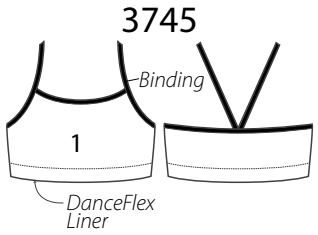


1-LOAD POUCH (1.5 oz.)
9117-099

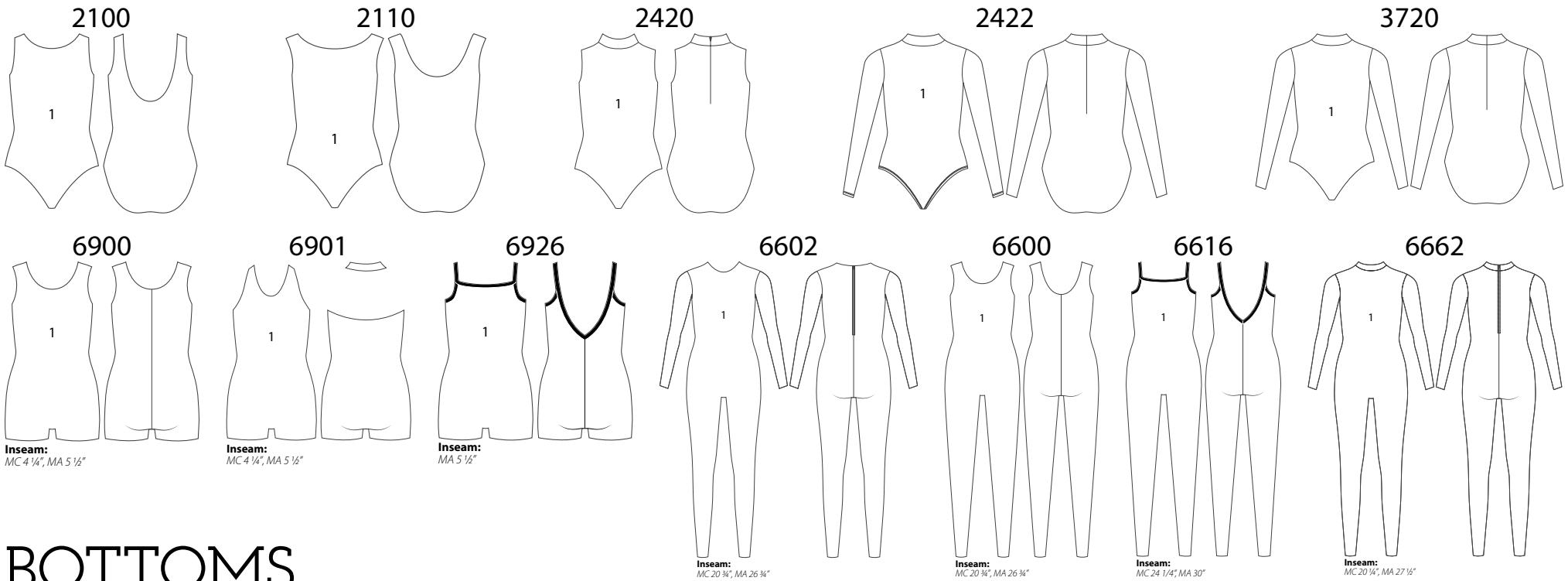
BASICS

These basics styles are not pictured in the catalog but they are available for purchase with all colors and options available in this catalog. Choose from any of the options shown below to add some of our classic basics styles to your order.

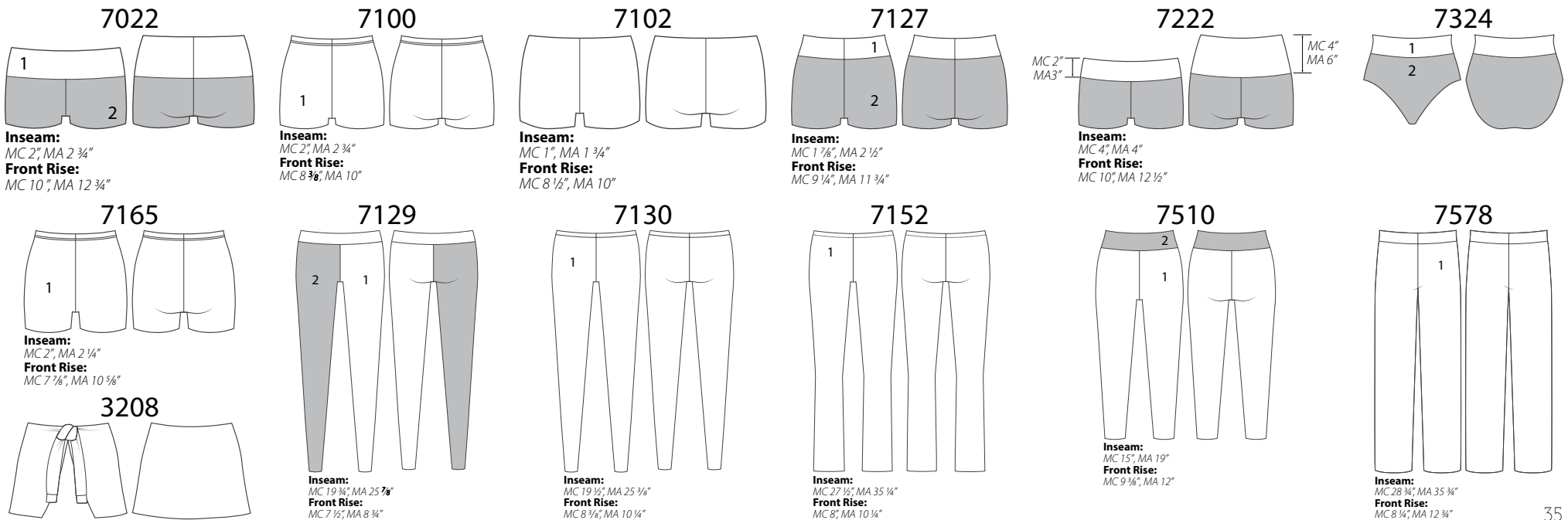
TOPS



LEOTARDS, BIKETARDS, & UNITARDS



BOTTOMS





MOTIONWEAR®

1315 Sunday Drive
Indianapolis, IN 46217-9334
Order desk: (800) 869-0609
Office: (317) 780-0609
Fax: (317) 780-4188
Toll-free fax: (888) 869-0609
E-mail: orders@motionwear.com
motionwear.com
© 2019 Motionwear, LLC



@ MOTIONWEAR



SEWN
IN THE
USA