

CHEER 2019




MOTIONWEAR®



Check out our **NEW**
digital coloring tool
at cheermotionwear.com

Proudly
Designed
& Sewn in **USA**
Indianapolis, Indiana

#MOTIONWEAR

CAMPWEAR

PG 3

POLYESTER

PG 11

FLEX POLY

PG 11

CLASSIC POLY

PG 23

DRI-LINE

PG 27

MEN'S STYLES

PG 35

QUICK SHIP

PG 39

DANCE TEAM

PG 41

WARM-UPS

PG 47

ACCESSORIES

PG 51

HEADBANDS & BOWS

PG 51

BACKPACKS & SHOES

PG 52

PODS & MEGAPHONES

PG 53

BASTCS

PG 54

Q&A WITH MISS TEEN INDIANA USA

PG 55

SIZING & ORDERING INFO

PG 56





To move is to lead.

You practice. You perform. You compete.

To move is to transcend and you are always in motion.

*Always inspiring. Always delivering your best.
Never settling for "just good enough."*

That's the spirit of a true leader.

That's the spirit of Motionwear.


MOTIONWEAR®

What's new this year?

Redefined Fit

Motionwear brings you new, modern, athletic fabrics with that traditional look you love! Our Flex Poly has a 4-way stretch that moves with even the toughest of routines. Most importantly: it's developed by cheerleaders for cheerleaders.

Stretch Braid

You asked, we delivered. Our new and improved Stretch Braid holds up better than ever for every tuck, toss, and tumble — just another example of Motionwear's commitment to our athletes.

Custom Campwear

Motionwear is proud to announce the launch of our customizable campwear collection, a seemingly endless combination of colors, patterns, fonts and styles! We're so excited about our custom campwear that we chose to kick off this very catalog with it! Turn the page to see it for yourself and don't miss the four-step D.I.Y. guide to start creating your custom campwear look on page nine.

As always...

We are dedicated to you and delivering your team's uniforms on time while offering the highest quality fit, style, and value. For over thirty years, Motionwear has been a leading supplier of dance, gymnastics, and cheerleading apparel. From design to production and even our exceptional customer service, everything is handled right here in the U.S.A.

Your satisfaction and success are our mission. We make the best so you can be your best, and your continued feedback inspires us to keep improving.

Thank you.

*Sincerely,
Your Motionwear Team*

CAMPWEAR



@MOTIONWEARCHEER

motionwear.com • 800-869-0609 • cheer@motionwear.com



3

CAMPWEAR

Create your own unique campwear look with customizable prints, fonts, and colors! See page nine for customization options.

A. 3420* Style C Dye Sub Tank \$40
Shown with FBBC Font and "Geo" Pattern

7917 Style A Dye Sub Shorts \$30
Shown with "Geo" pattern

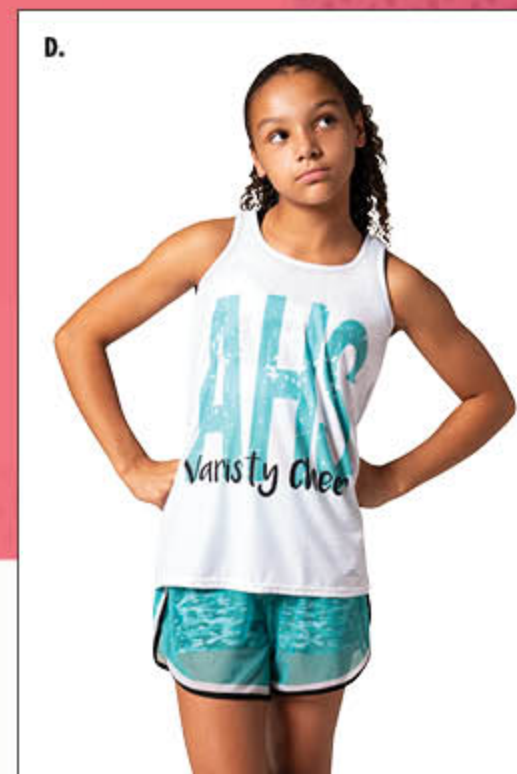
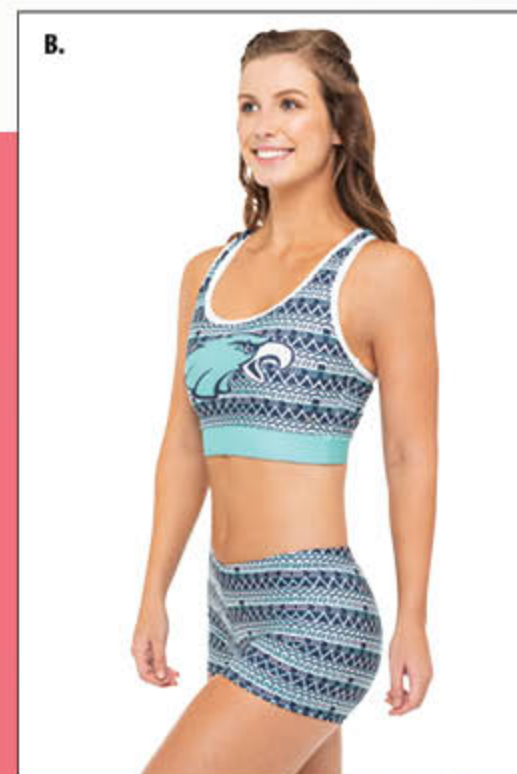
B. 3237* Style A Dye Sub Racerback Bra Top \$36
Shown with "Eagle Head" Mascot and "Geo" Pattern

7917 Style A Dye Sub Low Rise Shorts \$30
Shown with "Geo" Pattern

C. 3237* Style B Dye Sub Racerback Tank \$36
Shown with FBIL Font and "Static" Pattern

D. 3420* Style A Dye Sub Tank \$40
Shown with VN and LA Fonts

7902* Style B Dye Sub Shorts \$42
Shown with "Static" Pattern



*Available In Plus - Additional \$8.



A. 3420* Style B Dye Sub Tank \$40
Shown with "LH" and "FBIL" Fonts with "Lines" Pattern

6951 Style B Dye Sub Capri Leggings \$50
Shown with "Lines" Pattern



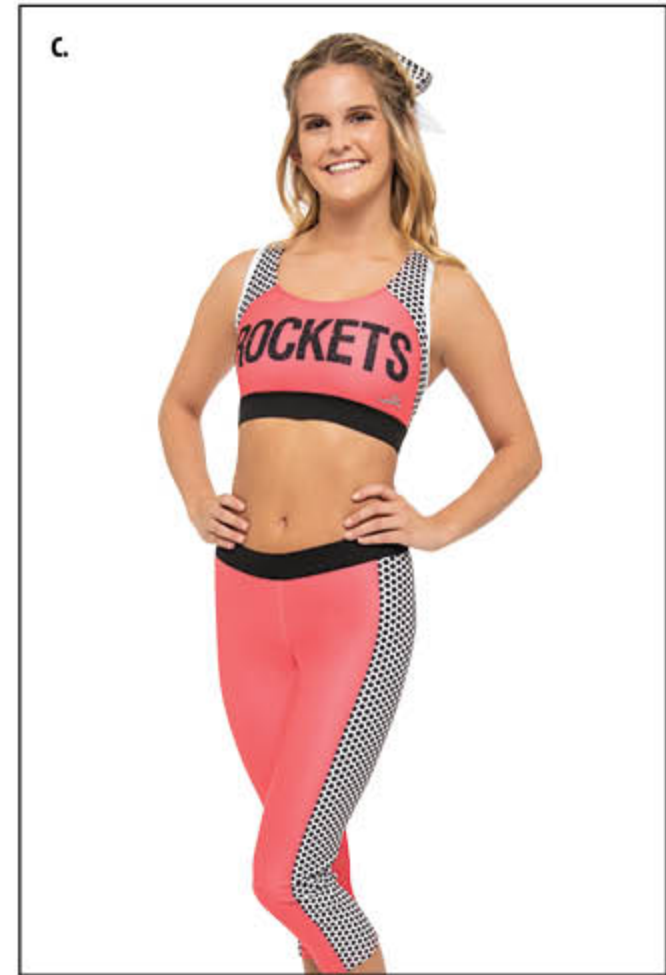
B. 3237* Style A Dye Sub Racerback Bra Top \$36
Shown FBIL and "Lines" Pattern

6951 Style B Dye Sub Capri Leggings \$50
Shown with "Lines" Pattern



C. 3020* Style B Dye Sub V-Neck Tee \$52
Shown with "Lines" Pattern
Left Chest Shown with VN and FBIL
Center Back Shown with MT

7480* Style B Dye Sub Short with Mesh Overlay \$42
Shown with "Lines" Pattern



A. 3072 Style C Dye Sub Bra Top \$36
Shown with "MT" "Lines" Pattern

7480* Style B Dye Sub Short with Mesh Overlay \$42
Shown with "Lines" Pattern

B. 3016* Style B Dye Sub Open Back Tank \$40
Shown with "LH" and "Dots" Pattern

3387 Style B Dye Sub Racerback Bra Top \$36
Shown with "Dots" Pattern

7982 Style B Dye Sub Capri Leggings \$48
Shown with "Dots" Pattern

C. 3387 Style B Bra Top \$36
Shown with "VN" and "Dots" Pattern

7982 Style B Capri Leggings \$48
Shown with "Dots" Pattern

*Available in Plus - Additional \$8.



A. 3020* Style C Dye Sub V-Neck Tee \$52
Shown with "VN" and "MT"

6951 Style A Dye Sub Capri Legging \$50

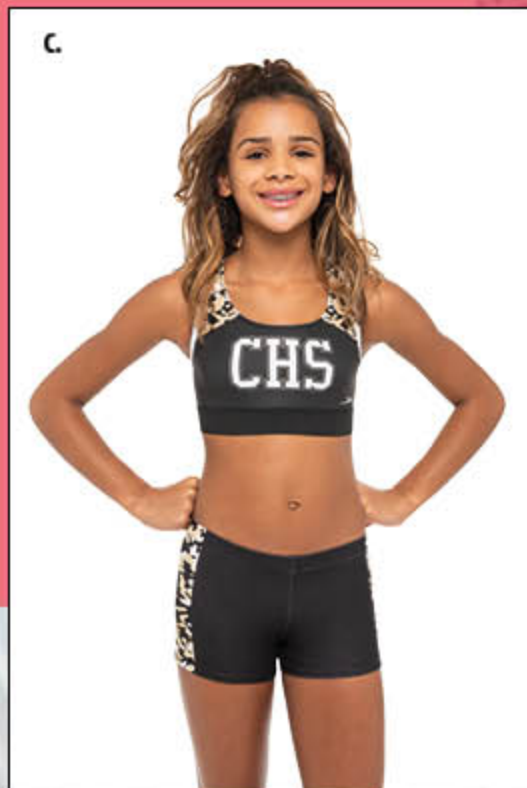
B. 3020* Style A Dye Sub V-Neck Tee \$52
Shown with "FS" and "FBVA"

7917 Style B Dye Sub Low Rise Shorts \$30
Shown with "Static" pattern

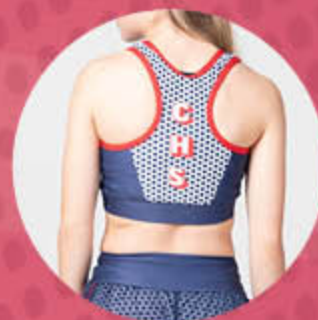
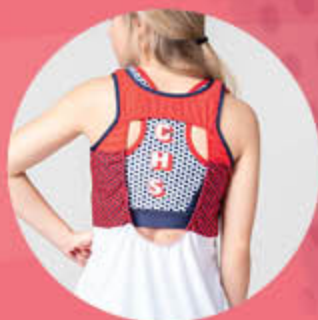
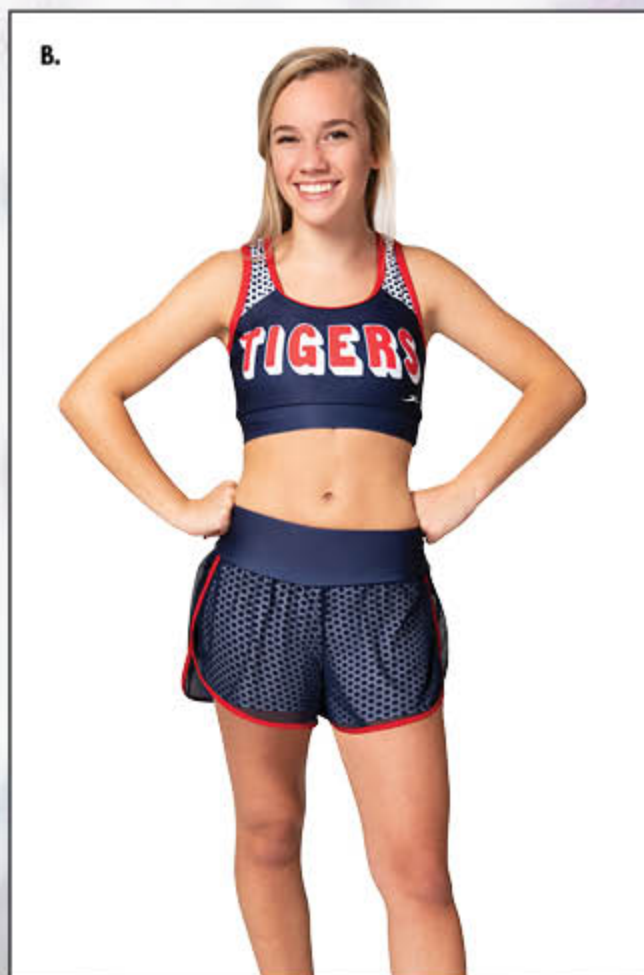
C. 3387 Style C Bra Top \$36
Shown with "FBBC" and "Static" Pattern

7917 Style B Dye Sub Low Rise Shorts \$30
Shown with "Static" pattern

Proudly
 Designed & Sewn in
USA
 Indianapolis, Indiana



**Available in Plus - Additional \$8.*



A. 3016* Style C Dye Sub Open Back Tank \$40
Shown with "MT" and "Dots" Pattern

3237* Style C Dye Sub Racerback Bra Top \$36
Shown with "LH" and "Dots" Pattern

7902* Style A Dye Sub Short with Mesh Overlay \$42
Shown with "Dots" Pattern

B. 3237* Style C Dye Sub Bra Top \$36
Shown with "LH" and "Dots" Pattern

7902* Style A Dye Sub Short with Mesh Overlay \$42
Shown with "Dots" Pattern

*Available in Plus - Additional \$8.

Step #1

CHOOSE YOUR STYLE

ALL STYLES COME IN MULTIPLE OPTIONS. DON'T FORGET TO SPECIFY OPTION A, B, OR C WHEN PLACING YOUR ORDER!

*MINIMUM 12 OR MORE PIECES PER STYLE

	3237	3072	3387	3020	3420	3016
A						
B						
C						
	7917	7480	7902			
A						
B						
	6951	6951	7982	7982	7982	
A						
B						
C						

Step #2

CHOOSE YOUR PRINT

Step #3

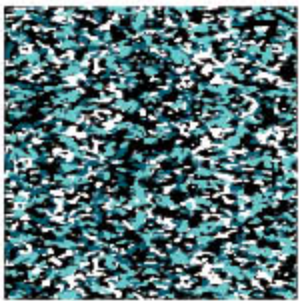
CHOOSE YOUR COLOR

Step #4

CHOOSE YOUR LETTERING

CHOOSE PRINTS OR SOLID COLOR FOR PANELS

STATIC



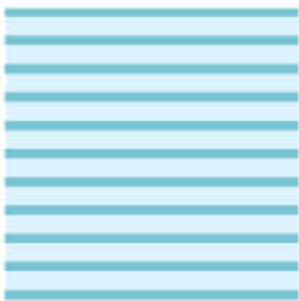
Choose up to 4 colors.

GEO



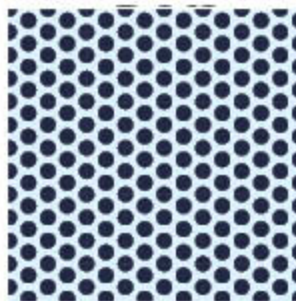
Choose up to 3 colors.

LINES



(2 Colors) Stripes/Background

DOTS



(2 Colors) Dots/Background

SCHOOL COLORS



FASHION COLORS



LETTERING OPTIONS

BULLDOGS

VN

Bulldogs

LA

BULLDOGS

LH

Bulldogs

MT

Plus any of Motionwear's standard lettering found on page 57.

NEW!

A.



**MEN'S STYLE ON
PAGE 36**

B.

NEW!



A. 8345 Shell \$110
*Shown with Stock
Cardinal Head Mascot*

B. 8345 Shell \$110
*Shown with Stock
Cardinal Head Mascot*

3700 Dri-Line Bodyliner \$80

8348 Skirt \$80

8348 Skirt \$80

Developed with your team in mind. Focused on maintaining the integrity of your favorite polyester cheer uniforms, while incorporating stretch technology to move with the demands of today's cheerleaders.

NEW!

LETTERING INCLUDED

2-COLOR TACKLE TWILL LETTERING INCLUDED FOR POLY AND FLEX POLY SHELL ORDERS OF SIX OR MORE PIECES (PAGES 11-26).

A.

B.

C.



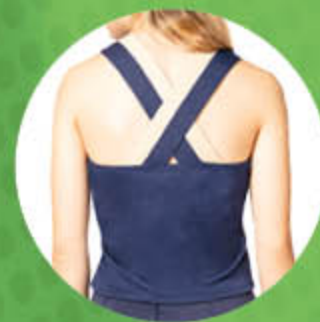
MEN'S STYLE ON
PAGE 36



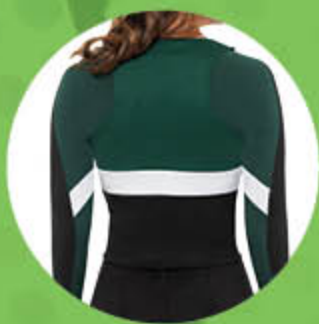
A. 8328* Shell \$110
*Shown with FS and
Stock Eagle Head Mascot*
3701 Liner \$96
8331* Skirt \$75



B. 9468* Shell \$104
Shown with SEVA
9477* Skirt \$75



C. 9481* Shell \$104
Shown with FBVA
8620* Skirt \$67



A. 8535 Shell \$106
Shown with FBVA

3235 Liner \$42

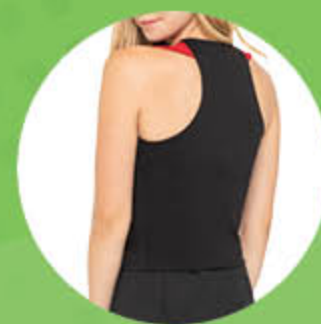
9867 Skirt \$71



B. 8560* Shell \$106
Shown with FBBC

3235 Liner \$42

9865 Skirt \$71
*Shown with Stock
Paw Print Embroidery*



C. 8988* Shell \$98
Shown with FBVA

9475* Skirt \$71

**ADD YOUR MASCOT OR
TEAM NAME TO THE BACK**

A.



NEW!

B.

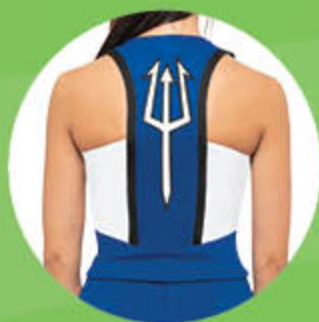


POMS SHOWN
ON PAGE 53

C.



NEW!



A. 8322 Shell \$110
Shown with DSEA
and Custom Logo
9475* Skirt \$71



B. 8919 Shell \$110
Shown with SSBC
8626* Skirt \$71

ADD YOUR MASCOT OR
TEAM NAME TO THE BACK



C. 8337* Shell \$110
Shown with Aachen
Bold VA and Stock
Bulldog Head Mascot
8620* Skirt \$67

*Available in Youth



A. 8538 Shell \$110
Shown with CSVA and Custom Mascot
8634* Skirt \$71



B. 9872 Shell \$110
Shown with FBIL
8244 Liner \$73
9866* Skirt \$73



C. 9873 Shell \$110
Shown with FBVA
8636* Skirt \$78

LETTERING INCLUDED

2-COLOR TACKLE TWILL LETTERING INCLUDED FOR POLY AND FLEX POLY SHELL ORDERS OF SIX OR MORE PIECES (PAGES 11-26).

A. 9482 Shell \$106
Shown with SEBC

9477* Skirt \$75

B. 9448 Shell \$112
Shown with FBBC

8626* Skirt \$71

C. 9476 Shell \$106
Shown with FBFA

9477* Skirt \$75

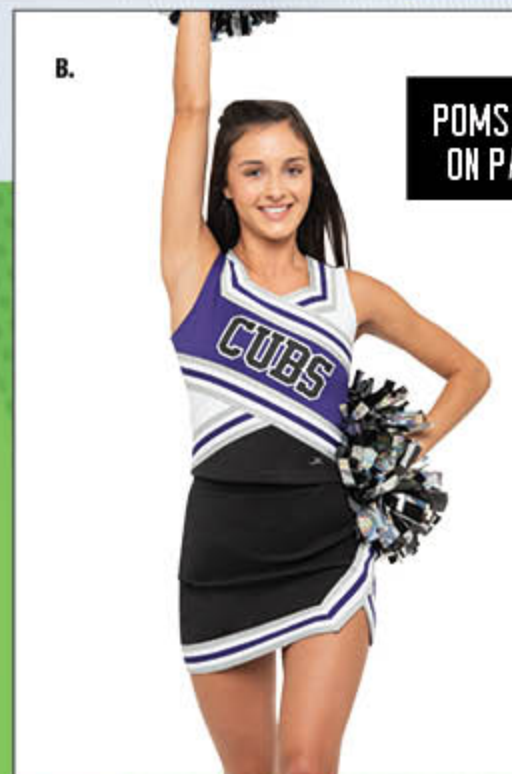
D. 9474* Shell \$106
Shown with FBVA

9475* Skirt \$71

A.



B.



POMS SHOWN
ON PAGE 53

C.



MEN'S STYLE ON
PAGE 37

D.



MIX IT UP

Proudly
Designed
& Sewn in
USA
Indianapolis, Indiana



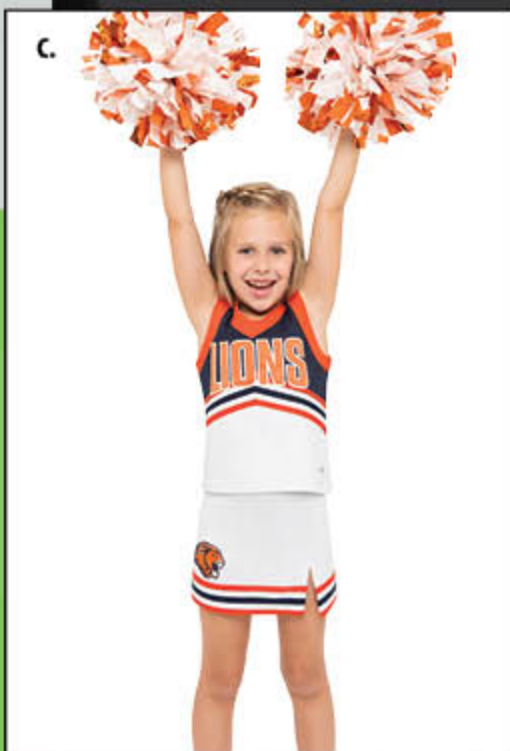
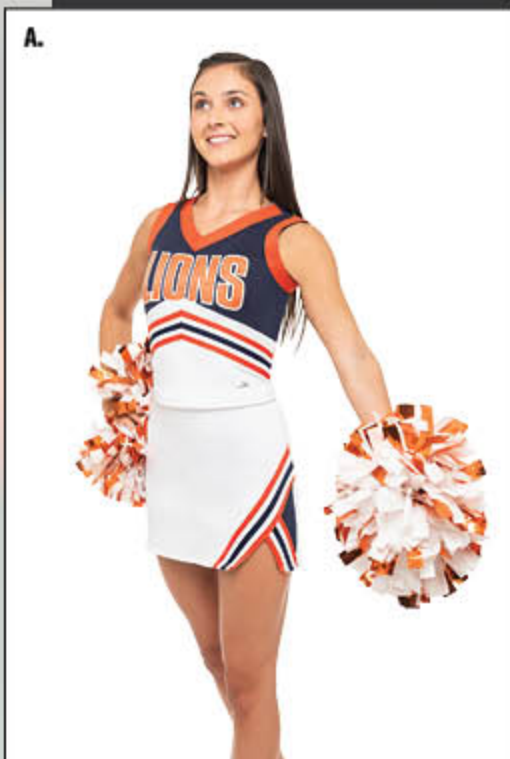
A. 9385* Shell \$106
Shown with FBEA
8481 Liner \$73
9480* Skirt \$71



B. 9385* Shell \$106
Shown with FBBR
9480* Skirt \$71



C. 9385* Shell \$106
Shown with FBEA
8481 Liner \$73
8896* Skirt \$73



LOOKS FOR DAYS

NEW!



NEW!

- | | | | |
|--|---|---|---|
| A. 8516* Shell \$104
<i>Shown with CSDA</i> | B. 8516* Shell \$104
<i>Shown with CSDA</i> | C. 8516* Shell \$104
<i>Shown with CSDA</i> | D. 8516* Shell \$104
<i>Shown with CSDA</i> |
| 8642* Skirt \$71 | 3309 Liner \$35.50 | 9480* Skirt \$71
<i>Stock Lion
Head Mascot</i> | 8642* Skirt \$71 |
| | 9480* Skirt \$71
<i>Stock Lion
Head Mascot</i> | E. 8325 Shell \$104
<i>Shown with FBBC
and Stock Eagle
Head Mascot</i> | F. 8325 Shell \$104
<i>Shown with FBBC
and Stock Eagle
Head Mascot</i> |
| | | 8319 Skirt \$82 | 8316 Skirt \$82
<i>Shown with PS</i> |

*Available in Youth

A.



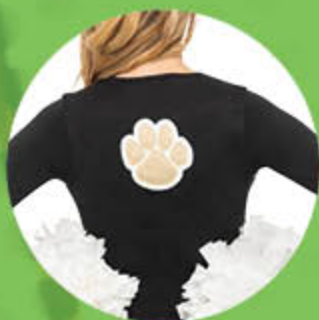
B.



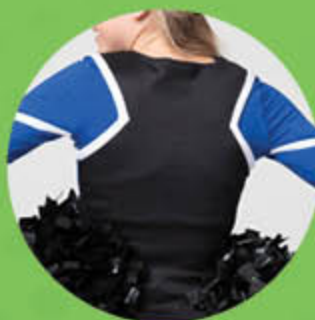
C.



POMS SHOWN
ON PAGE 53



A. 8855* Shell \$104
*Shown with FBBC and
Stock Twill Paw*
3309 Liner \$35.50
8623* Skirt \$71



B. 8902* Shell \$110
Shown with FBRR
3324 Liner \$73
8620* Skirt \$67



C. 8336 Shell \$98
Shown with SEVA
8620* Skirt \$67

LETTERING INCLUDED

2-COLOR TACKLE TWILL LETTERING INCLUDED FOR POLY AND FLEX POLY SHELL ORDERS OF SIX OR MORE PIECES (PAGES 11-26).

A. 8865* Shell \$110
Shown with FBBR

9475* Skirt \$71

B. 9407* Shell \$98
Shown with Stock Wolf Head Mascot

8989* Skirt \$71
Shown with PS Embroidery

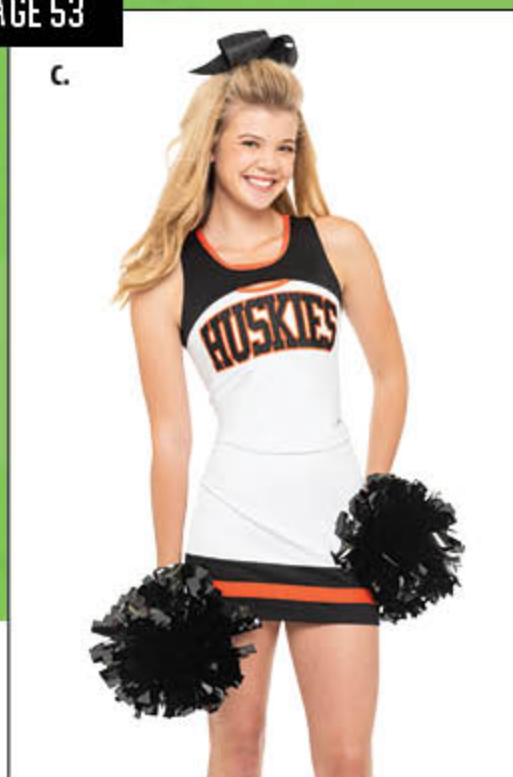
C. 8542 Shell \$106
Shown with FBEA

9889* Skirt \$66

D. 8526 Shell \$130
Shown with FBBC

8620* Skirt \$67

**POMS SHOWN
ON PAGE 53**



Proudly
Designed & Sewn in **USA**
Indianapolis, Indiana

*Available In Youth



A. 8889* Shell \$110
Shown with SEIL
and Custom Bearclaw

3319 Liner \$73

8621* Skirt \$67

C. 8515* Shell \$104
Shown with SEVA

3320 Liner \$73

9703* Skirt \$71

B. 8513* Shell \$104
Shown with FBRR

8627* Skirt \$71

D. 8501* Shell \$104
Shown with FBVA

3316 Liner \$73

8624* Skirt \$71

E. 8500* Shell \$98
Shown with FBDD

8629* Skirt \$71



*Available in Youth

LETTERING INCLUDED

2-COLOR TACKLE TWILL LETTERING
INCLUDED FOR POLY AND FLEX POLY
SHELL ORDERS OF SIX OR MORE PIECES
(PAGES 11-26).

A. 9483* Shell \$100
Shown with FBDB

3212 Liner \$84

8643* Skirt \$71

B. 9483* Shell \$100
Shown with FBDB

8643* Skirt \$71

C. 8840* Shell \$104
Shown with FBVA

8643* Skirt \$71

D. 8510* Shell \$104
Shown with LLWD

3308 Liner \$37.50

8625* Skirt \$71

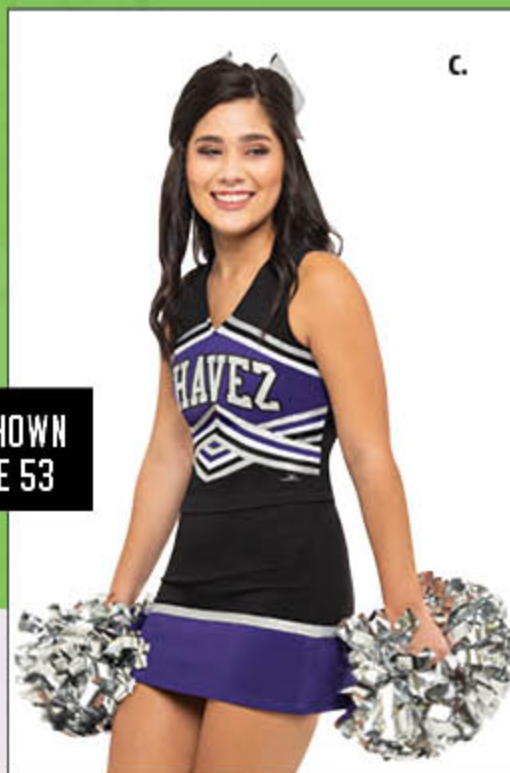
**POMS SHOWN
ON PAGE 53**



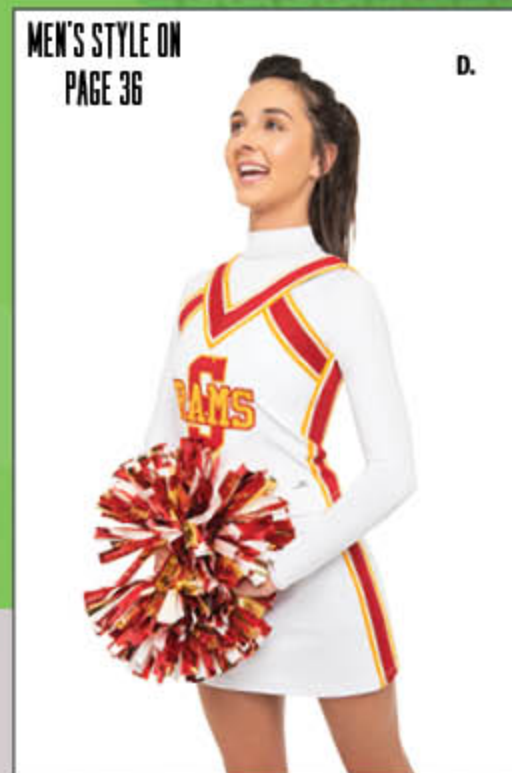
A.



B.



C.



D.

**MEN'S STYLE ON
PAGE 36**

CLASSIC POLY



@MOTIONWEARCHEER

motionwear.com • 800-869-0609 • cheer@motionwear.com



A. 8336 Shell \$92
*Shown with Customized
LLWD and SEVA*
8601* Skirt \$65

CLASSIC POLY

Great design and excellent fit that will last your team through this season and beyond!

A.



MEN'S STYLE ON
PAGE 37

A. 9852 Shell \$98
Shown with Stock
Tiger Head Mascot
8606 Skirt \$76

B. 9852 Shell \$98
Shown with Stock
Tiger Head Mascot
8610 Skirt \$100

B.

Proudly
Designed
& Sewn in
USA
Indianapolis, Indiana





POMS SHOWN
ON PAGE 53

A. 8525* Shell \$98
Shown with NCHS

8603 Skirt \$63

LETTERING INCLUDED

2-COLOR TACKLE TWILL LETTERING
INCLUDED FOR POLY AND FLEX POLY
SHELL ORDERS OF SIX OR MORE PIECES
(PAGES 11-26).

B. 8914 Shell \$98
Shown with FBIL

9704* Skirt \$65

A.



A. 9431 Shell \$98
*Shown with Stock
Wolf Head Mascot*
8629* Skirt \$65

B.



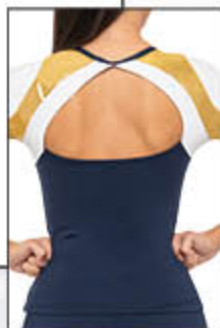
B. 8988* Shell \$92
Shown with FBVA
8620* Skirt \$61

A.

NEW!



POMS SHOWN
ON PAGE 53



A. 3022* Top \$105
Shown with CSBC

8444* Skort \$57

B.

NEW!



B. 3021* Shell \$92
Shown with CSDA

3120* Bra Top \$16

3338* Skirt \$51

*Available in Plus - Additional \$8.

A. 8419* Top \$105
Shown with FSBC

8424* Skirt \$48

B. 3322* Shell \$92
Shown with FSBC

3327* Skirt \$66

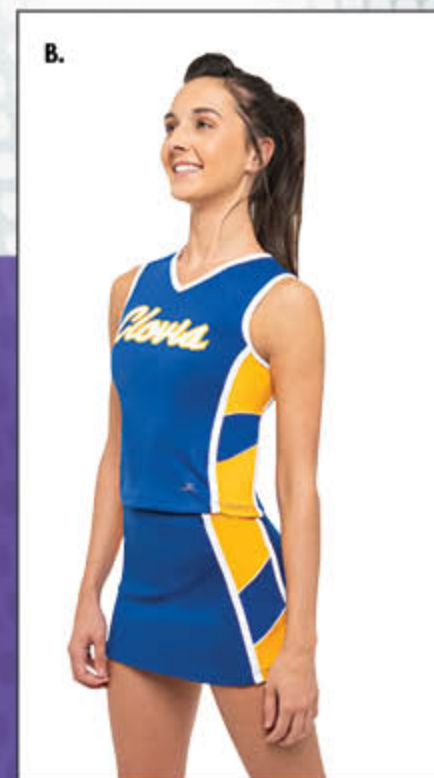
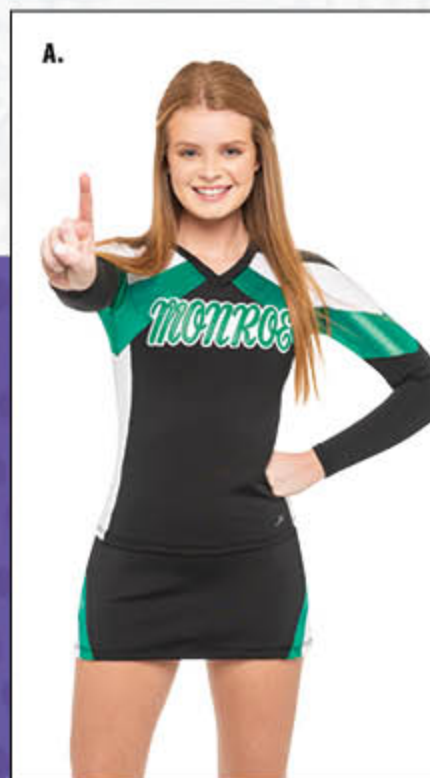
C. 3348* Top \$98
Shown with SSBC

3326* Skirt \$66

D. 3337* Shell \$92
Shown with SSBC

3338* Skirt \$51

POMS SHOWN
ON PAGE 53





A.

B.

C.

**MEN'S STYLE ON
PAGE 38**

A. 8249* Top \$104
Shown with FBVA

3338* Skirt \$51

B. 3094* Shell \$37
Shown with FBBR

8421* Skirt \$48

C. 3336* Top \$105
Shown with FBDA

3338* Skirt \$51

Proudly
Designed
& Sewn in **USA**
Indianapolis, Indiana

A.



POMS SHOWN
ON PAGE 53

B.



C.



MEN'S STYLE ON
PAGE 38

A. 3325* Shell \$92
Shown with FBBR
3309* Liner \$35.50
3326* Skirt \$66

B. 4955* Top \$66
Shown with FBVA
8206* Skirt \$38

C. 3313* Top \$118
Shown with FBVA
3405* Skirt \$69

Proudly
Designed
& Sewn in **USA**
Indianapolis, Indiana

*Available in Plus - Additional \$8.

A.



POMS SHOWN
ON PAGE 53

B.



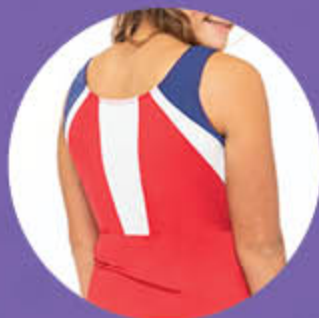
C.



A. 3523* Shell \$31
Shown with FBBC

8439* Skirt \$51

5421 Headband \$10
Shown with Custom
Script Lettering



B. 3724* Shell \$36
Shown with FBBC

3338* Skirt \$51



C. 3446* Shell \$90
Shown with Stock
Lion Head Mascot

3979* Skirt \$66

*Available in Plus - Additional \$8.

A.



B.



C.



MEN'S STYLE ON
PAGE 38



A. 3789* Shell \$37
Shown with
Custom Logo
7287* Skirt \$64



B. 3234* Shell \$92
Shown with FBFR
7602* Skirt \$66

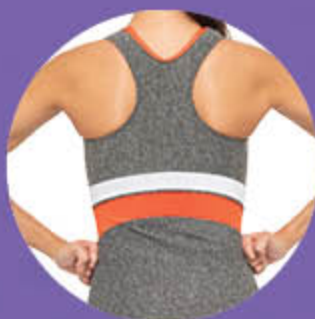
Proudly
Designed
& Sewn in **USA**
Indianapolis, Indiana

C. 3781* Top \$112
Shown with FBIL
3405* Skirt \$69

*Available in Plus - Additional \$8.



A. 3508* Shell \$31
Shown with LLWD
7311* Skirt \$64

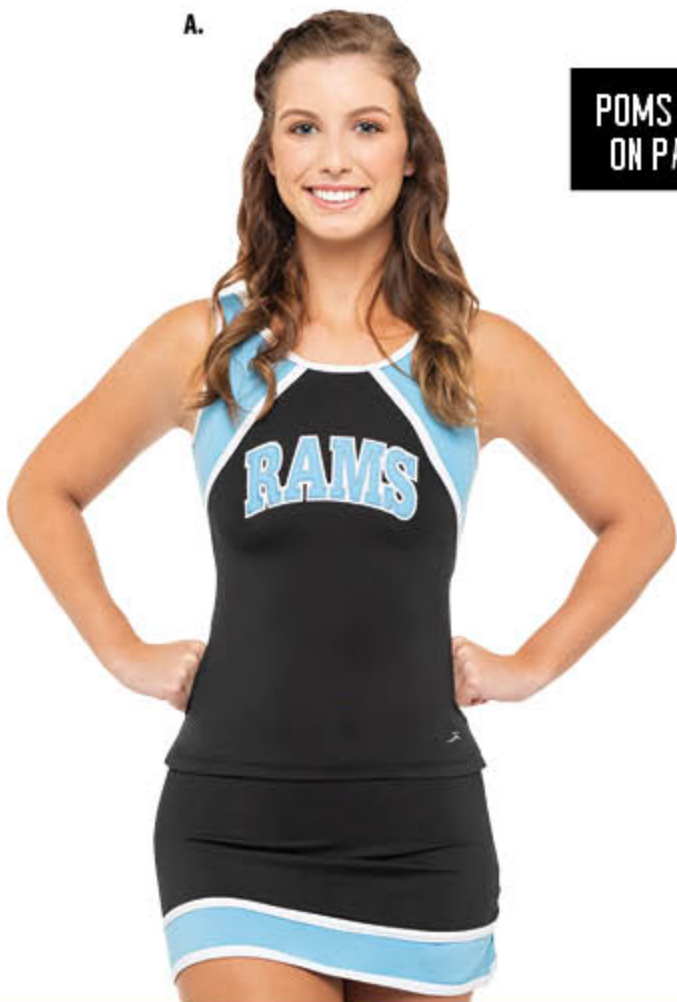


B. 8253* Shell \$60
Shown with FBVA
3338* Skirt \$51



C. 8457* Top \$105
Shown with SERB
8210* Skirt \$63

A.



POMS SHOWN
ON PAGE 53

B.

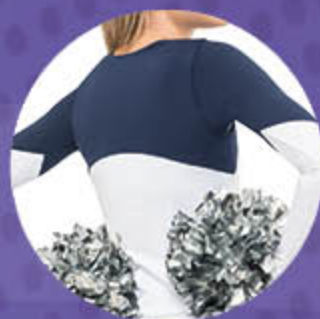


MEN'S STYLE ON
PAGE 38

C.



A. 3550* Shell \$37
Shown with SEVA
8439* Skirt \$51



B. 3459* Shell \$90
Shown with Stock
Bear Head Mascot
3452* Liner \$40
3984* Skirt \$63



C. 3901* Top \$120
Shown with CSVA
3340* Skirt \$63

*Available in Plus - Additional \$8.



A. 9511 Top \$111
Shown with LLVD

9652 Pant \$80

B. 9511 Top \$111
Shown with FBBR

9652 Pant \$80

C. 9318 Top \$111
Shown with Stock
Eagle Head Mascot and FS

9507 Pant \$70

D. 9427 Top \$111
Shown with Stock
Cardinal Head Mascot

9507 Pant \$70



POLY

NEW!

NEW!

POLY

A.



A. 9515 Top \$111
Shown with FBEA

9507 Pant \$70

B.



B. 9574 Top \$114
Shown with Stock
Lion Head Mascot

9507 Pant \$70

DRI-LINE

A. 8260 Top \$92
Shown with FBBR

7578 Pant \$46

B. 8358 Top \$96
Shown with FBBR

7582 Pant \$76

C. 7297 Top \$92
Shown with Stock Bear
Head Mascot

7578 Pant \$46

D. 8359 Top \$92
Shown with FBIL

7580 Pant \$76

E. 8391 Top \$92
Shown with FBLC

7578 Pant \$46

A.



B.



C.



D.



E.



QUICK SHIP



@MOTIONWEARCHEER

motionwear.com • 800-869-0609 • cheer@motionwear.com



A. 9001 Shell \$36
Shown with OB Embroidery
9101 Skirt \$32

B. 9301 Dress \$62
Shown with BS Embroidery

C. 9302 Dress \$50
Shown with CP Embroidery

QUICK SHIP

Classic cheer looks, shipped quick! These cheer designs are timeless from head to toe! Who's got spirit? You, that's who!

A. 9014 Shell \$36
Shown with Comic Sans
9106 Skirt \$32

B. 9004 Shell \$36
Shown with FB
1. 9106 Skirt \$32
2. 9104 Skort \$32

C. 9000 Shell \$36
Shown with FB
9101 Skirt \$32

D. 9002 Shell \$36
Shown with PS
9102 Skirt \$32

E. 9317 Mesh Jersey \$30

F. 9014 Shell \$36
Shown with BB
9100 Skirt \$32



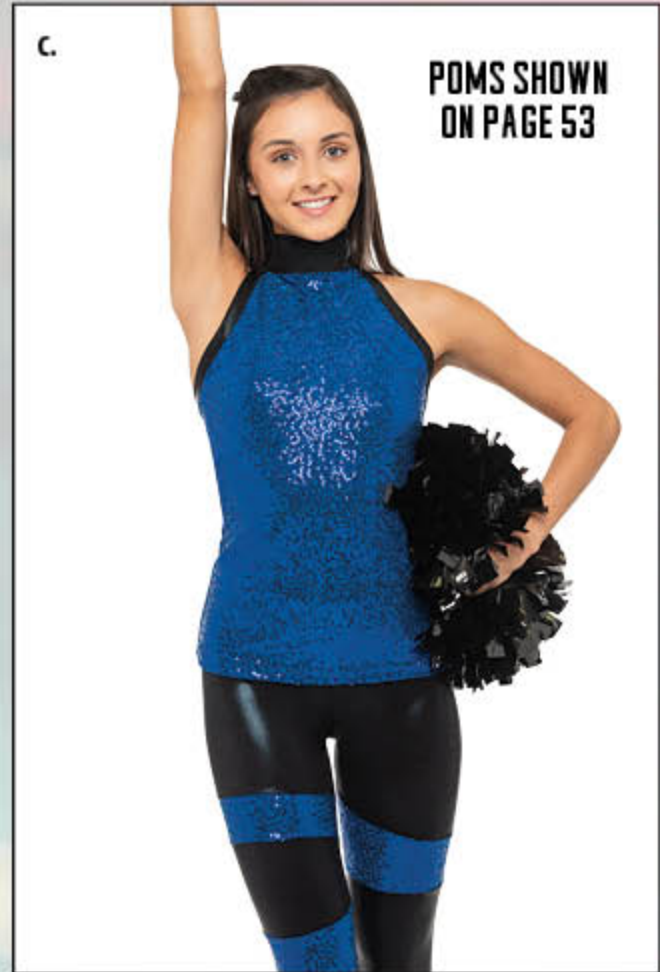
One-color embroidery included for Quick Ship shell or dress orders of six or more pieces of the same style/color.



A. 8447* Dress \$56
Shown with FBVA

POMS SHOWN
ON PAGE 53

*Available in Plus - Additional \$8.



Proudly
Designed
& Sewn in **USA**
Indianapolis, Indiana



A. 3719* Top \$40
Shown with SEIL
3075 Shrug \$30
7018* Leggings \$40.50

B. 3957* Top \$39
Shown with SSBC
7130* Leggings \$24

C. 3468* Top \$36
7517* Leggings \$41

A.



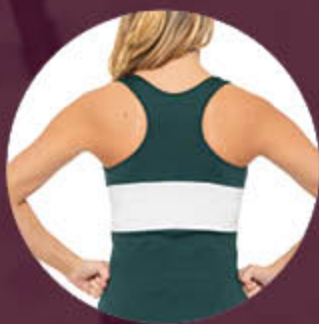
B.



C.



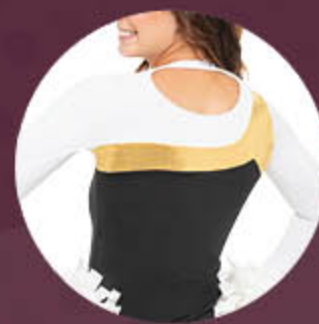
**POMS SHOWN
ON PAGE 53**



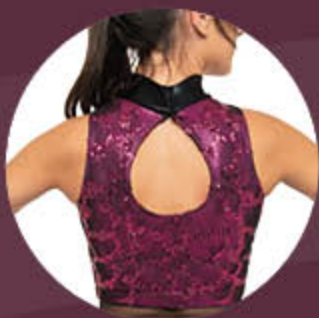
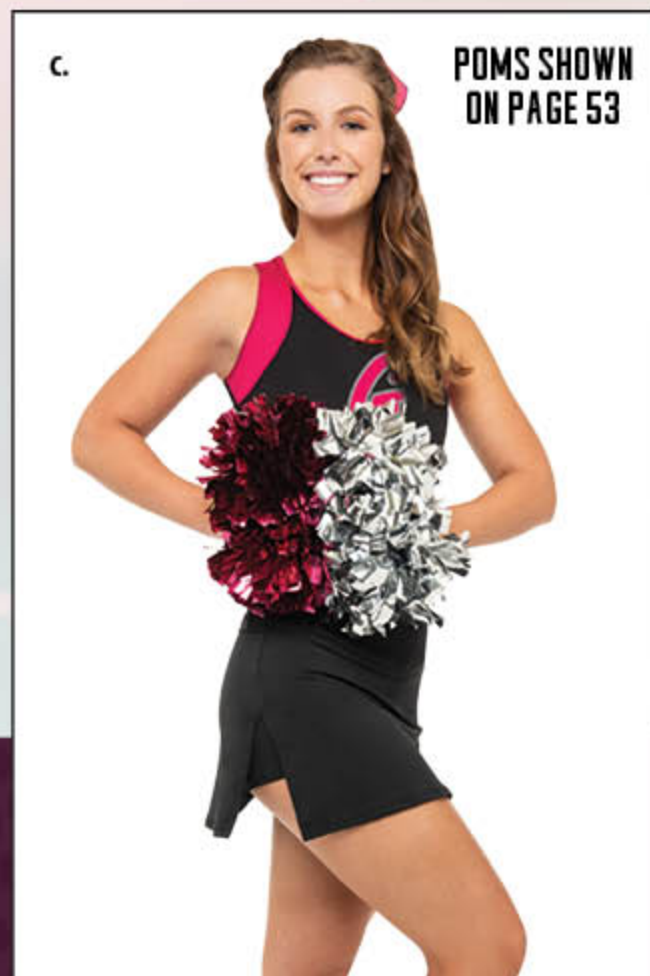
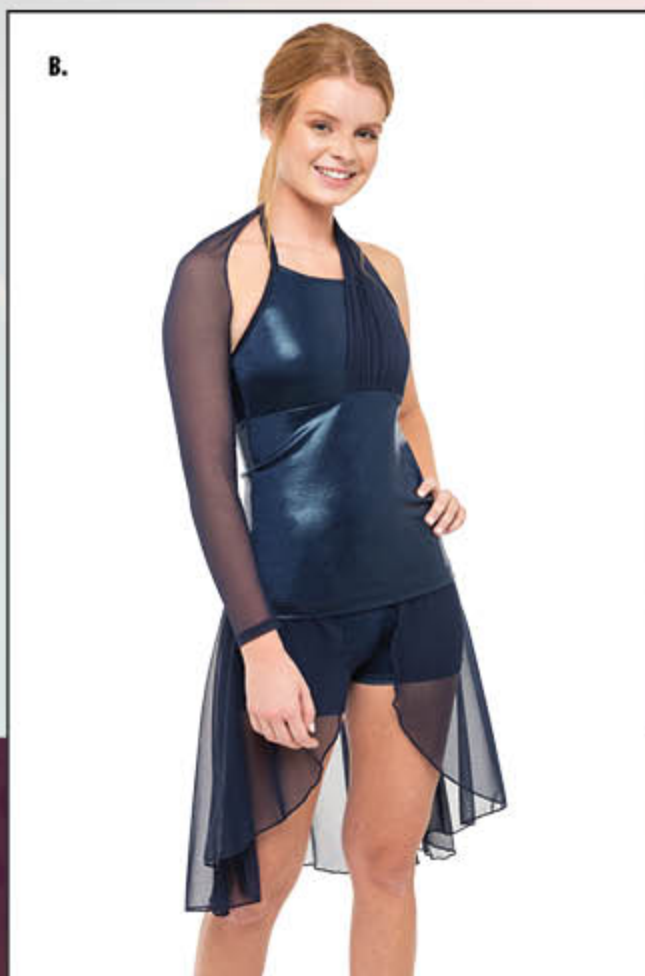
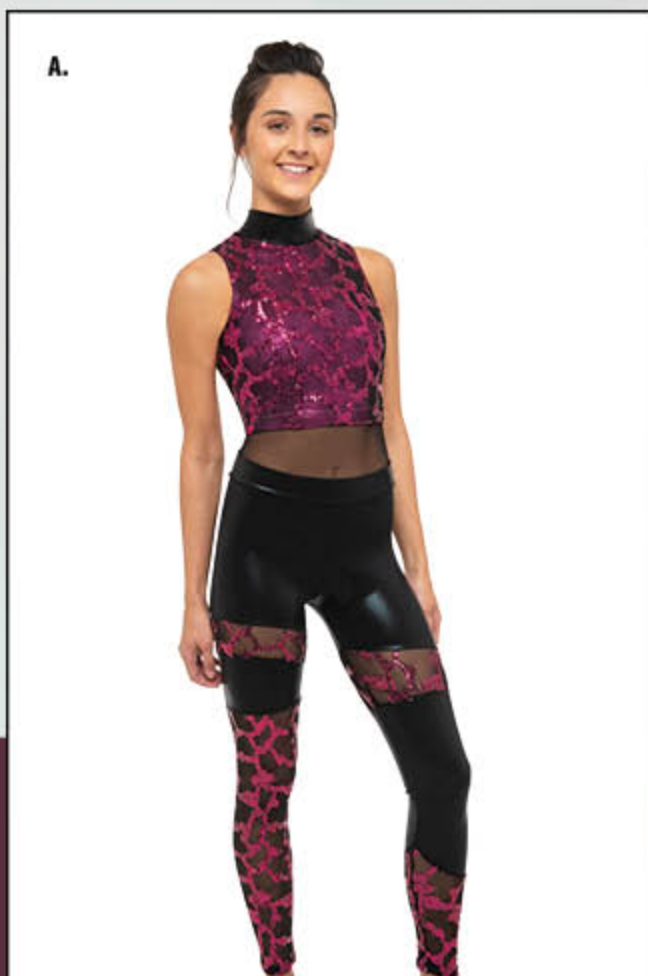
A. 3652* Top \$33
Shown with SEDA
8482* Skort \$60



B. 3413* Top \$34
Shown with PS
7130* Leggings \$24



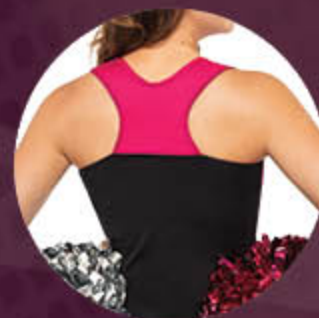
C. 3450* Top \$58
7152* Pant \$34.50



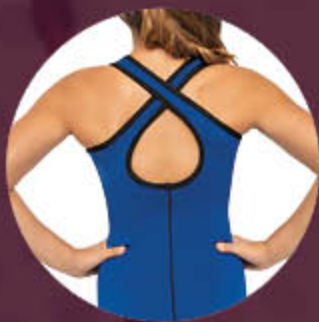
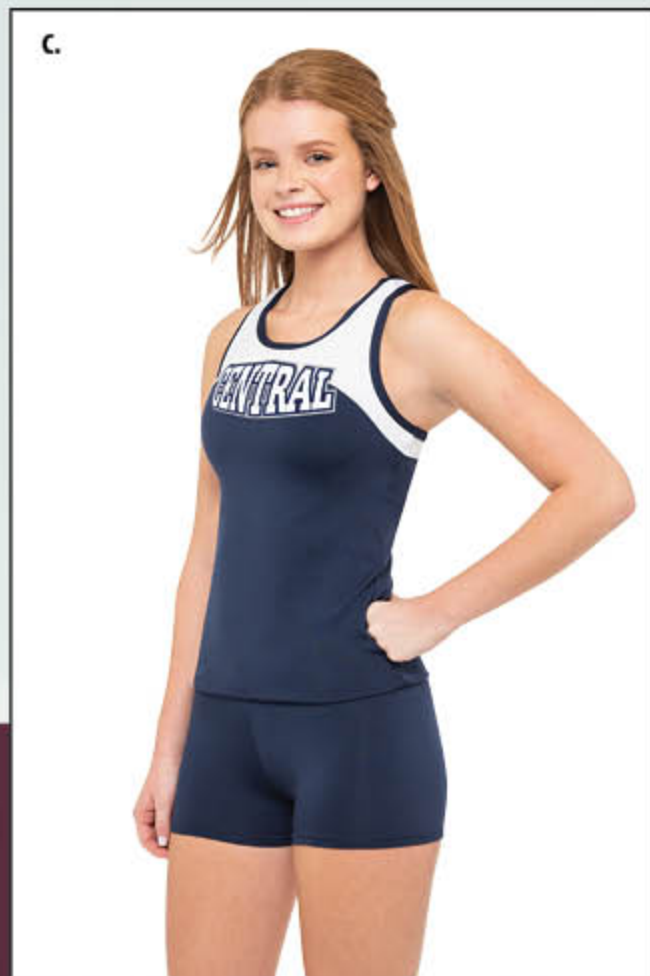
A. 3783* Crop Top \$36
2930* Bodysuit \$44
7517* Leggings \$44

Proudly
Designed
& Sewn in
USA
Indianapolis, Indiana

B. 3969* Top \$44
7291* Skirted Short \$44

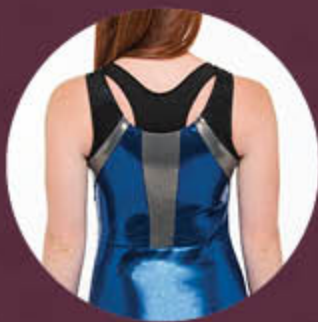


C. 3955 Top \$36
Shown with FLIL
1035* Skort \$32.50



A. 3999* Top \$37
Shown with SEDD

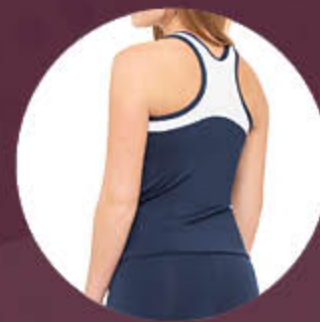
7130 *Leggings \$24



B. 3724* Top \$38

3120* BraTop \$16

8482* Skort \$60



C. 3601* Top \$34
Shown with SEDD

7917 Shorts \$15



A. 3001* Top \$40
Shown with CSBR
7130* Leggings \$24



B. 8234* Dress \$40
Shown with Custom Font



C. 8234* Dress \$56



DRI-LINE

A. 1597* Jacket \$96
Shown with FB and Custom Stepped Lettering
1592* Pant \$36

**Available in Plus - Additional \$8.*



DRI-LINE

B. 1618* Jacket \$96
Shown with FB and PS
7325* Jogger \$37

A.
DRI-LINE



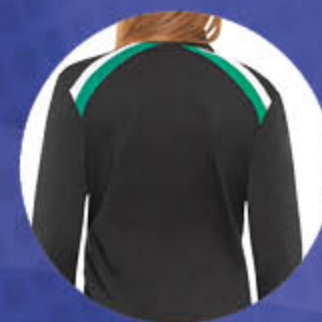
B.
DRI-LINE



C.
DRI-LINE



Proudly
Designed
& Sewn in
USA
Indianapolis, Indiana



A. 1268 Jacket \$100
Shown with FBIL, FB, and FBVA

7129* Leggings \$33

B. 1590* Jacket \$80
Shown with FB

7042* Leggings \$40

C. 1606* Jacket \$98
Shown with FBBC and FB

7080 Capri Leggings \$29.50

*Available in Plus - Additional \$8.

A.
FLEX POLY

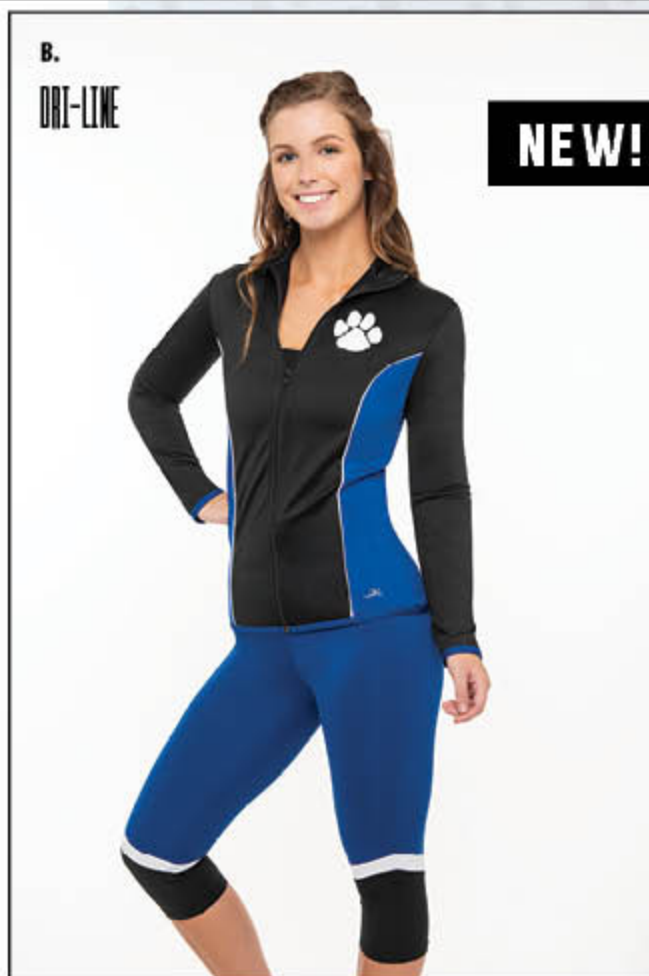


A. 8550 Jacket \$104
Shown with OB
9426 Pants \$76

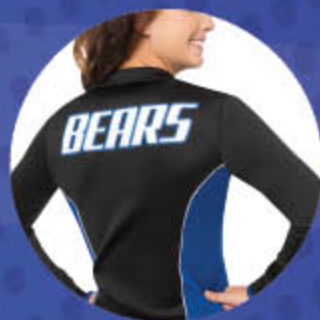
B.
FLEX POLY



B. 8551* Jacket \$96
Shown with DSBR
8650* Pants \$76



A. 8549* Jacket \$104
Shown with CS and CDSB
9426 Pants \$76



B. 3806* Jacket \$98
*Shown with Custom Lettering
and Stock Pawprint*
3216* Capri Leggings \$42



C. 3806* Jacket \$98
Shown with Custom Lettering
3216* Capri Leggings \$42



FLEECE HEADBANDS

1002 \$12.00 Blank

Available in the following
Fleece Colors:

Grey
Black
Red
Navy
Royal
Maroon



DRI-LINE HEADBANDS

5421 \$10.00 Blank

Available in all Dri-Line Colors
See chart on page 56

HEADBANDS & BOWS



BOWS

9379 3" Solid Bows \$10.00 MSRP

6450 3" Custom Bows \$15.00 and up MSRP

Designer 3" Bows are created by you with your design paired with a variety of patterns, colors, embellishments, and sizes. Please contact Motionwear Customer Service for details and pricing.

SHOES & BACK PACKS



**4854 SILVER SPARKLE
BACKPACK \$53.00 MSRP**

- Lightweight, nylon material
- Features extra large zippered main compartment with padded laptop sleeve
- Three additional zippered compartments
- One water bottle holder
- Two grab handles
- Dimensions: 19x13x9



**4853 BLACK SPARKLE
BACKPACK \$53.00 MSRP**

- Lightweight, nylon material
- Features extra large zippered main compartment with padded laptop sleeve
- Three additional zippered compartments
- Two water bottle holders
- Two grab handles
- Dimensions: 19x13x9



SEAMLESS \$65.00 MSRP
934 Sizes 10 - 2 child, 4 - 5.5 adult
944 Sizes 6 - 14 adult

- Cross over Sideline to Competition



STELLARLYTE \$55.00 MSRP
937 Sizes 10 - 2 child, 4 - 5.5 adult
947 Sizes 6 - 12 adult

- Competition level
- High performance mat
- Only 6 ounces!



EVOLUTION \$90.00
902 Sizes 10 - 3 child, 4 - 5.5 adult
912 Sizes 6 - 14 adult

- Nfinity® red shoe case
- White leather & saffron upper for support
- Only 6.5 ounces

SHAKE IT UP!

MEGAPHONES

\$40.00 MSRP

6082 Black 6083 Royal
6084 Red 6085 White

- Lightweight durable plastic with rolled edge
- Metal mouthpiece and handle
- Available in 30" length
- Available in Black, Royal, Red, and White



Additional colors available upon request.

POMS & MEGS

9326 Plastic Colors: \$10.50 MSRP (Per Pom)



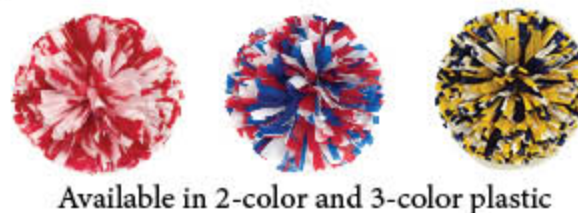
9333 Specialty Colors: \$22.00 MSRP (Per Pom)



9331 Metallic Colors: \$22.00 MSRP (Per Pom)



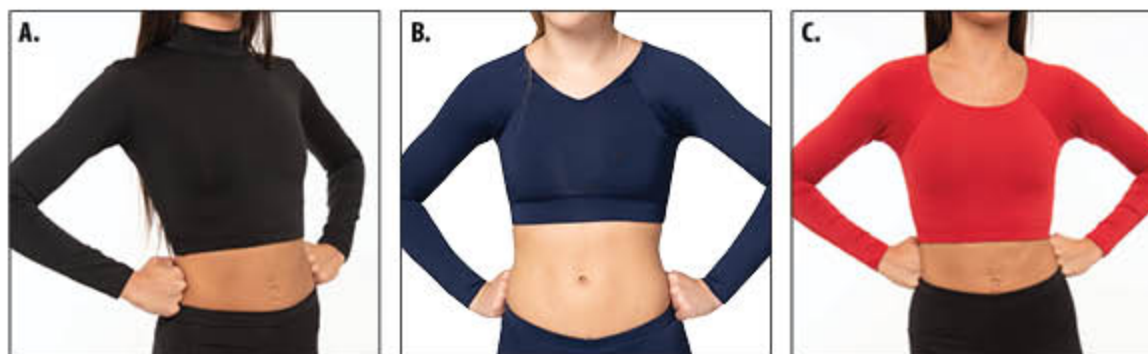
9332 Multi-color Plastic: \$12.00 MSRP (Per Pom)



9327 Metallic/Plastic Mix: \$14.75 MSRP (Per Pom)



BASICS



- A. 3711* Liner \$32
- B. 3309* Liner \$35.50
- C. 8245* Liner \$35.50
- D. 3120* Racerback Bra Top \$16
- E. 7917 Short \$15
- F. 7080 Capri Leggings \$29.50
- G. 7129* Leggings \$33
- H. 7152* Pants \$34.50

Motionwear Cheer Basics are available in Dri-Line Fabric: a Microfiber Polyester-Spandex blend known for its durability and comfort. Motionwear basics are made to move with you - base layer garments built for comfort.

See colors on page 56.

*Available in Plus - Additional \$8.

Q&A

MISS INDIANA TEEN USA 2019



Catie Combellick

Hometown: Carmel, Indiana

Hobbies: Horseback riding, cello, art, and modelling

Likes: Animals and kids

Dislikes: Homework 🙄

Favorite Food: Apple pie and apple cider 🍏

Follow Catie on Instagram @catie_combellick

What brings you the greatest joy?

I've been riding horses for 9 years now; I've tried cable roping, barrel racing, pole bending, and now hunter jumping. Every time I go to the barn and see my horses I am instantly filled with joy and excitement. No matter how bad of day I may have had, being around horses never fails to put a smile on my face and brighten up my world.

What is the best advice you have ever been given?

I've always kept my schedule tightly packed. I have orchestra rehearsal, cello lessons, art lessons, horseback riding, charity work, schoolwork, working out at the gym, club activities, house of representatives, and being Miss Indiana Teen USA. There are times where I feel overwhelmed with everything that I have to do. The best advice that I've ever been given is to take everything one at a time. Looking at things all at once can make one overwhelmed and more likely to quit. But looking at things individually makes everything seem less stressful, and more likely to get your work done.

What quote do you live by?

"Be your own kind of beautiful" - I personally have struggled with seeing myself as beautiful in the past. The constant battle with myself and the mirror was driven by the unrealistic standards of "beauty" that were constantly shoved in my face and are set by society. I remember seeing this quote on the side of an old building when I was in Kansas City Missouri. Seeing this quote made me stop and realize that every person is different and every person is beautiful in their own way. And just because a magazine or someone at school says differently, as long as you are yourself, you are beautiful. Defy societies unrealistic standards. Jump OFF the bandwagon... You are you... and you are beautiful

Who are your heroes?

My biggest hero would be my mom. She has shown me the importance of hard work and perseverance. My mother has defied every stereotype and has shown me how powerful women can be. Even though it took a lot of patience and effort she is an ER physician at IUHN/Riley Hospital and I aspire to follow in her footsteps one day.



POLY

WOMEN'S POLY UNIFORMS

	Size	Bust	Back Length	Waist	Hips	Skirt Length	Dress Length
YOUTH	YXS	23	11½	20	26½	7	--
	YS	25	12½	22	28½	9	--
	YM	27	13½	24	30½	12	--
	YL	30	14½	26	32½	13	--
	YXL	32	15½	28	34½	15	--
	Y2X	34	16	30	36½	15	--
ADULT	2XS	26½	15½	21	31	13	32
	XS	28½	16	22	32	13	32
	S	30½	16½	24	34	14	32½
	M	32½	17	26	36	14	32½
	L	34½	17½	28	38	15	33½
	XL	36½	18	30	40	15	34
PLUS	2XL	38½	18½	32	42	16	34½
	3XL	40½	19	34	44	16	35
	4XL	42½	19½	36	46	17	35½
	5XL	44½	20	38	48	17	36

MEN'S POLY UNIFORMS

	Size	Chest	Waist	Inseam
ADULT	XS	31-33	24-26	29
	S	34-36	27-29	30
	M	37-39	30-32	31
	L	40-42	33-35	32
	XL	43-45	36-38	32
	2XL	46-48	39-41	33
	3XL	49-51	42-44	34
4XL	52-54	45-47	34	
5XL	55-57	48-50	34	

Color	Motionwear Cheer Poly	Twill & Braid	Motionwear Flex Poly
Black	112	BLK	724
White	184	WHT	725
Gray	179	SGR	
Shadow Gray			778
Scarlet	178	SCR	708
Cardinal	116	CAR	718
Columbia Blue	169	COL	764
Royal Blue	177	ROY	770
Navy	174	NAV	766
Teal	185	TEA	793
Kelly Green	172	KEL	775
Dark Green	170	DNK	734
Vegas Gold	183	VSG	774
Bright Gold	114	BRG	772
Purple	176	PUR	784
Maroon	173	MAR	783
Orange	175	ORG	761
		MVG Metallic Vegas Gold	
		MSG Metallic Silver	

BRAID STYLES

11B - 1/2"	53C - 1"
11C - 1"	53E - 2"
11E - 2"	
22C - 1"	55C - 1"
22E - 2"	55E - 2"
23C - 1"	65E - 2"
23E - 2"	
25C - 1"	75E - 2"
25E - 2"	

DRI-LINE/STRETCH

WOMEN'S DRI-LINE/STRETCH & BASICS (For Styles 1000 - 8260, 8358-8482)

	Size	Bust	Waist	Hips	Girth
CHILD	XSC (2-3)	19-20	18-19	19-20	35-37
	SC (4-6)	20-21	18-20	21-22	37-39
	IC (6x-7)	22-24	20-21	23-25	40-43
	MC (8-10)	25-27	21-23	26-28	44-48
	LC (12-14)	26-29	23-25	29-31	49-52
	ADULT	PA	30-32	23-25	31-34
SA		30-33	23-26	33-35	54-57
MA		34-37	25-28	35-38	57-60
LA		37-41	28-32	38-42	61-64
XLA		41-43	32-35	42-45	64-67
PLUS		1X	43-45	36-39	45-48
	2X	45-48	39-43	48-51	70-73
	3X	48-50	43-46	51-54	73-76

MEN'S DRI-LINE/STRETCH

	Size	Chest	Waist	Inseam
CHILD	SC	24	22	
	IC	26 3/8	23	
	MC	28 5/8	25	
	LC	31	27	
ADULT	SA	35-37	28-31	35-37
	MA	37-40	31-33	37-40
	LA	40-43	33-35	40-43

Color	Dri-Line
Black	610
White	611
Scarlet	616
Cardinal	633
Columbia Blue	624
Royal Blue	617
Navy	621
Kelly Green	627
Dark Green	623
Bright Gold	620
Purple	619
Maroon	622
Tan	629
Orange	628
Shadow Gray	491
Heather Gray	414

Color	Shine On
Grape	234
Midnight Blue	200
Royal Blue	282
Ocean	233
Kelly Green	238
Lime	285
Chartreuse	209
Gold	284
Orange	239
Burgundy	235
Red	281
Red Cherry	215
Bubblegum	231
White Pearl	226
Silver	280
Platinum	237
Black	236

Color	Sequins
Black	792
Burgundy	995
Navy	723
Royal	654
Gold	104
Purple	941
Red	508
White	660
Berry	649
Kelly	966
Aqua	667

Color	Mesh
Purple	038
Sapphire	845
Royal	838
Turquoise	242
Crimson	697
Neon Pink	302
Pink	759
Nude	221
Mocha	056
White	192
Gray	064
Black	823

Color	Making Waves
Fuchsia	879
Teal	875
Silver	864

TACKLE TWILL AND FABRIC LETTERING STYLES

LETTERING STYLE	FULL BLOCK	SERIFA	DISPLAY SANS	CLEAN SANS	FREESTYLE SCRIPT	STYLUS SCRIPT
BACKGROUND CONNECTED	BULLDOGS FBBC	BULLDOGS SEBC	BULLDOGS DSBC	BULLDOGS CSBC	<i>Bulldogs</i> FSBC	<i>Bulldogs</i> SSBC
INDIVIDUAL LETTERS	BULLDOGS FBIL	BULLDOGS SEIL	BULLDOGS DSIL	BULLDOGS CSIL	<i>BDGS</i> FSIL	<i>BFS</i> SSIL
VERTICAL ARCH	BULLDOGS FBVA	BULLDOGS SEVA	BULLDOGS DSVA	BULLDOGS CSVA	<i>Bulldogs</i> FSVA	<i>Bulldogs</i> SSVA
ELEVATED ARCH	BULLDOGS FBEA	BULLDOGS SEEA	BULLDOGS DSEA	BULLDOGS CSEA	<i>Bulldogs</i> FSEA	<i>Bulldogs</i> SSEA
DOUBLE ARCH	BULLDOGS FBDA	BULLDOGS SEDA	BULLDOGS DSDA	BULLDOGS CSDA	N/A	N/A
BRIDGE	BULLDOGS FBBR	BULLDOGS SEBR	BULLDOGS DSBR	BULLDOGS CSBR	N/A	N/A
DIAMOND BRIDGE	BULLDOGS FBDB	BULLDOGS SEDB	BULLDOGS DSDB	BULLDOGS CSDB	N/A	N/A
REVERSE DIAMOND BRIDGE	BULLDOGS FBRB	BULLDOGS SERB	BULLDOGS DSRB	BULLDOGS CSRB	N/A	N/A
DOUBLE DIAMOND	BULLDOGS FBDD	BULLDOGS SEDD	BULLDOGS DSDD	BULLDOGS CSDD	N/A	N/A
LARGE CENTER LETTER	M W S FBLC	M W S SELC	M W S DSLCL	M W S CSLC	N/A	N/A

HOW TO MEASURE YOUR LETTERING

Lettering is the top layer of the appliqué. The height is measured from top to bottom of the inside letter or number. This is the letter size.

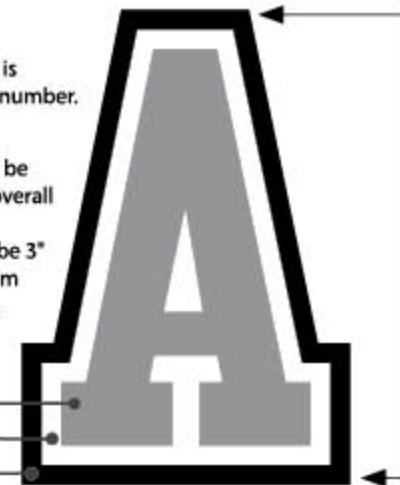
The embellishment size called out on your proof may be slightly different. This measurement will reflect the overall size of the word, not just the individual letters. For example, the letter size for lettering style FBVA may be 3" tall but the embellishment dimension, measured from top to bottom of the outermost layer, may be 4" tall.

WHAT IS A LETTER VERSUS TRIM?

Lettering is shown in Gray (the top layer)

Trim 1 is shown in White (the next layer)

Trim 2 is shown in Black (the third layer)



MASCOT DESIGNS

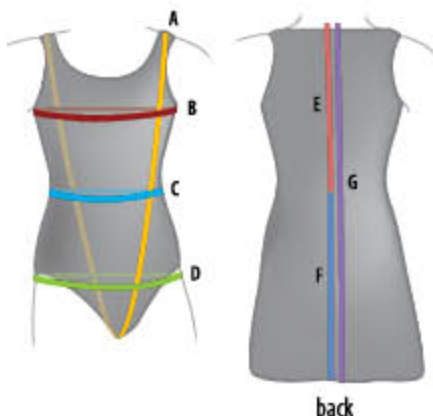
Available in 2" or 3". Call us about custom embroidery.



SPECIALTY TACKLE TWILL AND FABRIC LETTERING STYLES



HOW TO MEASURE



- A) **Girth:** Measure from the center of the shoulder, down the front, through the legs, and up the back to the starting point on the opposite shoulder.
- B) **Bust/Chest:** With arms down, measure around the fullest part of the chest.
- C) **Waist:** Measure around the body at the natural waistline.
- D) **Hips:** Measure around the body at the fullest part of the seat.
- E) **Back Length:** Measure from the most prominent bone at base of neck to the natural waistline.
- F) **Skirt Length:** Measure from natural waistline to desired skirt length.
- G) **Dress Length:** Measure from the most prominent bone at the base of the neck to desired dress length.

ORDERING INFORMATION

DETAILS: Prices and details in this catalog are subject to correction or change without notice.

COLORS: Colors shown in catalog are approximate. Motionwear strives to maintain consistent color matching. Shading may vary due to fabrication differences. Color swatches are available upon request.

CUSTOM and PERSONALIZATION: Many items in this catalog may be customized to match your school or organization colors, name, team or mascot. Custom and personalized items cannot be returned or exchanged.

CANCELLATIONS

All Motionwear garments are specially made for you! Therefore, once production has started on your garments, changes or cancellations are no longer permitted. Before placing your order, please double check for accuracy.

READ BEFORE YOU WASH YOUR GARMENT

SPECIAL INSTRUCTIONS

Garments made in combinations of light and dark colors are at risk for color transference. To minimize, wash your garments per the washing instructions before wearing for the first time. Do not allow a damp garment to sit for any period of time. Perspiration, deodorant and aerosols may cause color transference. Following the care instructions will help, but not eliminate these issues. Failure to follow the instructions included could affect the look of your garment. Please keep these instructions for future reference.

Motionwear may refuse return or replacement of garments with color combinations that are prone to color transference or for failure of delicate specialty fabrics including mesh and foiled fabrics.

READ THIS BEFORE YOU WASH YOUR GARMENT

Care Instructions

- Wash garment BEFORE wearing.
- Turn garment INSIDE OUT before washing.
- Machine wash INDIVIDUALLY using a small amount of liquid detergent, on a gentle cycle, in a large volume of COLD water.
- DO NOT pour detergent directly on garment, add fill water and add garment.
- IMMEDIATELY after spin cycle, CAREFULLY hang garment on thick hanger to dry.
- DO NOT use bleach, harsh or granular detergents, fabric softeners, or any other detergents made for fine washables. (i.e. wool or silk).
- DO NOT hand wash.
- DO NOT iron garment.
- DO NOT machine dry or lay flat to dry. DO NOT dry clean.

STANDARD FEATURES

STANDARD FEATURES - SHELLS:

- Back panel of each shell is made of stretch fabric for a flattering fit, comfort and performance.
- Shells are available in standard length, +1" and +2".
- Shell and skirt styles include the braid width indicated.
- Two-color twill is included in the price of the shell for orders of 6 or more pieces of the same style/color.
- Styles offered in Youth are noted with symbol.



Standard Back



Racerback

STANDARD FEATURES - SKIRTS:

- Skirts feature zipper and button closure and waistband with built-in elastic for optimum comfort and fit.
- Skirts are available in standard length, +1", +2", and -1".
- Shell and skirt styles include the braid width indicated.
- Style numbers listed are standard length. (MC length: 12 1/2", MA length: 14 3/4")
- Styles offered in Youth are noted with symbol in the Line Art section on pages 60-68.

POLY - CLASSIC AND FLEX

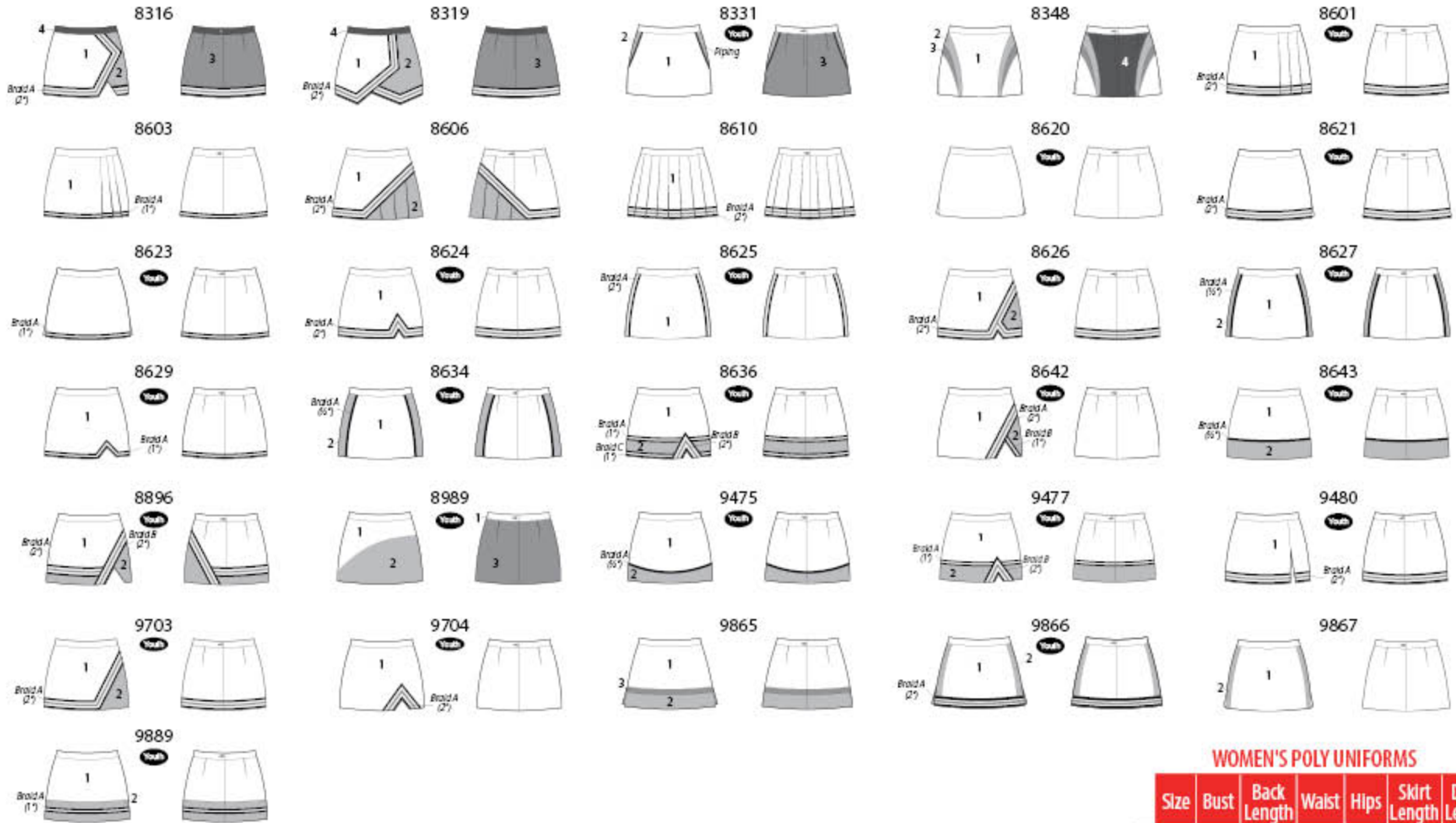
- Prices are MSRP. See price list for pricing of FlexPoly and Traditional Poly
- Add \$6 per garment for Motionwear FLEXpoly.

STANDARD FEATURES - DRI-LINE/STRETCH & BASICS:

- Bottoms noted with Skirt (without brief), Skirt with brief, Skort (with boycut brief), or Shorts.
- Choose your combination of Dri-Line and Shine On colors.
- Choose your custom embellishment of fabric lettering, crystals, spangles, and appliqués at an additional charge.
- Sizes range from XSC through Plus 3X unless noted in the price list.
- Standard skirt lengths are: Regular: MC 10 1/2", MA 13 1/4" Short: MC 9 1/2", MA 12 1/2" (Minus 1") Long: MC 11 1/2", MA 14 1/4" (Plus 1")
- Fabric lettering is used for Dri-Line garment applications at an additional charge.
- All Dri-Line Styles available in Youth Sizes.
- Prices are MSRP.

POLY



POLY


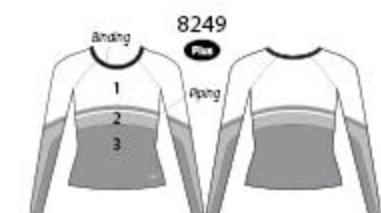
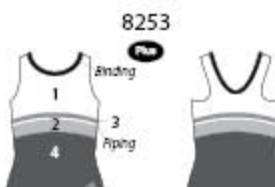
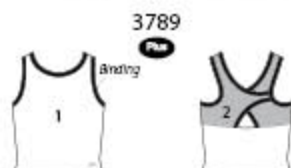
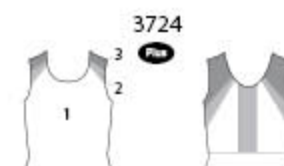
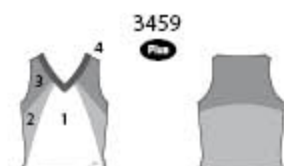
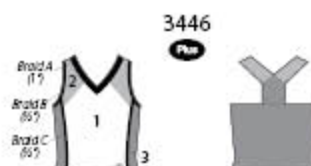
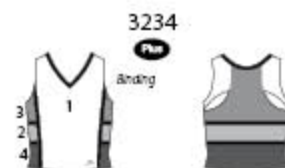
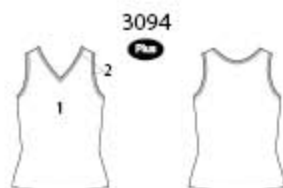
Color	Motionwear Cheer Poly	Twill & Braid	Motionwear Flex Poly
Black	112	BLK	724
White	184	WHT	725
Gray	179	SGR	
Shadow Gray			778
Scarlet	178	SCR	708
Cardinal	116	CAR	718
Columbia Blue	169	COL	764
Royal Blue	177	ROY	770
Navy	174	NAV	766
Teal	185	TEA	793

Color	Motionwear Cheer Poly	Twill & Braid	Motionwear Flex Poly
Kelly Green	172	KEL	775
Dark Green	170	DNG	734
Vegas Gold	183	VSG	774
Bright Gold	114	BRG	772
Purple	176	PUR	784
Maroon	173	MAR	783
Orange	175	ORG	761
		MVG Metallic Vegas Gold	
		MSG Metallic Silver	

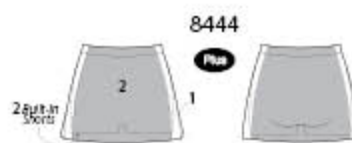
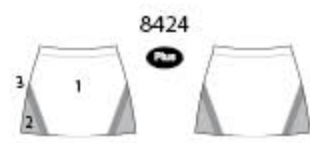
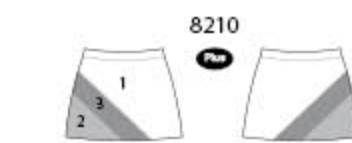
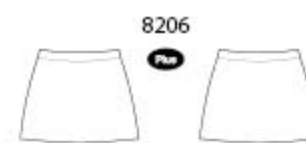
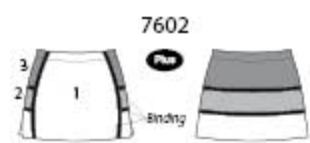
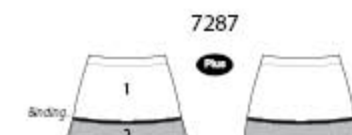
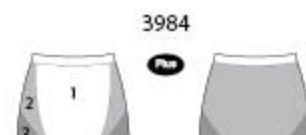
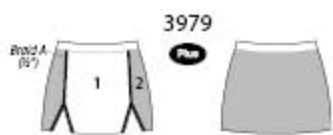
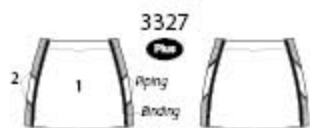
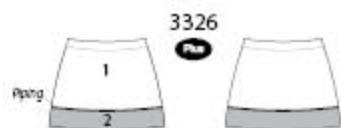
BRAID STYLES			
11B - 1/2"		53C - 1"	
11C - 1"		53E - 2"	
11E - 2"			
22C - 1"		55C - 1"	
22E - 2"		55E - 2"	
23C - 1"		65E - 2"	
23E - 2"			
25C - 1"		75E - 2"	
25E - 2"			

WOMEN'S POLY UNIFORMS

	Size	Bust	Back Length	Waist	Hips	Skirt Length	Dress Length
YOUTH	YXS	23	11½	20	26½	7	--
	YS	25	12½	22	28½	9	--
	YM	27	13½	24	30½	12	--
	YL	30	14½	26	32½	13	--
	Y2X	34	16	30	36½	15	--
ADULT	2XS	26½	15½	21	31	13	32
	XS	28½	16	22	32	13	32
	S	30½	16½	24	34	14	32½
	M	32½	17	26	36	14	32½
	L	34½	17½	28	38	15	33½
PLUS	XL	36½	18	30	40	15	34
	2XL	38½	18½	32	42	16	34½
	3XL	40½	19	34	44	16	35
	4XL	42½	19½	36	46	17	35½
	5XL	44½	20	38	48	17	36



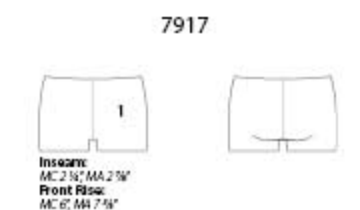
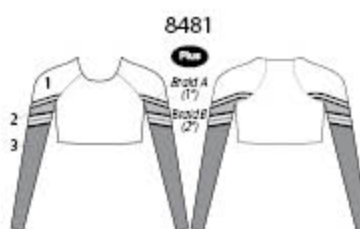
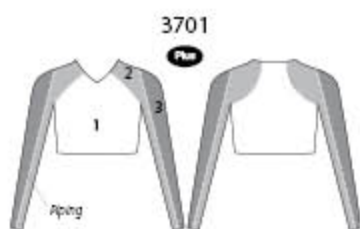
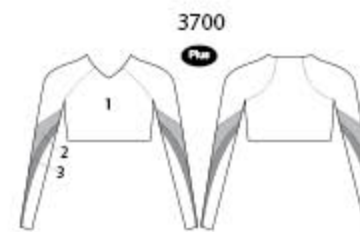
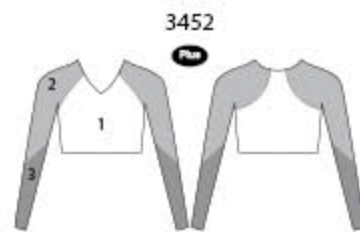
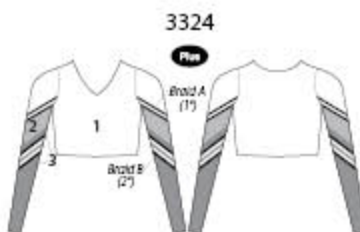
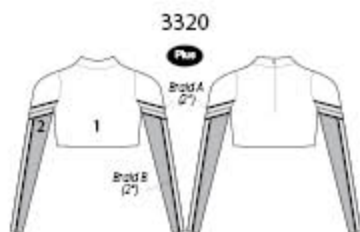
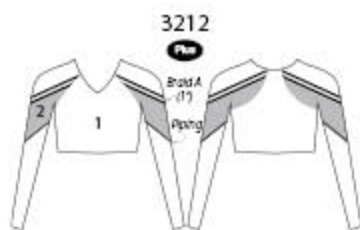
DRI-LINE



Color	Dri-Line	Color	Shine On
Black	610	Grape	234
White	611	Midnight Blue	200
Scarlet	616	Royal Blue	282
Cardinal	633	Ocean	233
Columbia Blue	624	Kelly Green	238
Royal Blue	617	Lime	285
Navy	621	Chartreuse	209
Kelly Green	627	Gold	284
Dark Green	623	Orange	239
Bright Gold	620	Burgundy	235
Purple	619	Red	281
Maroon	622	Red Cherry	215
Tan	629	Bubblegum	231
Orange	628	White Pearl	226
Shadow Gray	491	Silver	280
Heather Gray	414	Platinum	237
		Black	236

WOMEN'S DRI-LINE/STRETCH & BASICS
(For Styles 1000 - 8260, 8358-8482)

	Size	Bust	Waist	Hips	Girth
CHILD	XSC (2-3)	19 - 20	18 - 19	19 - 20	35 - 37
	SC (4-6)	20 - 21	18 - 20	21 - 22	37 - 39
	IC (6x-7)	22 - 24	20 - 21	23 - 25	40 - 43
	MC (8-10)	25 - 27	21 - 23	26 - 28	44 - 48
	LC (12-14)	26 - 29	23 - 25	29 - 31	49 - 52
ADULT	PA	30 - 32	23 - 25	31 - 34	51 - 54
	SA	30 - 33	23 - 26	33 - 35	54 - 57
	MA	34 - 37	25 - 28	35 - 38	57 - 60
	LA	37 - 41	28 - 32	38 - 42	61 - 64
	XLA	41 - 43	32 - 35	42 - 45	64 - 67
PLUS	1X	43 - 45	36 - 39	45 - 48	67 - 70
	2X	45 - 48	39 - 43	48 - 51	70 - 73
	3X	48 - 50	43 - 46	51 - 54	73 - 76



WOMEN'S DRI-LINE/STRETCH & BASICS
(For Styles 1000 - 8260, 8358-8482)

	Size	Bust	Waist	Hips	Girth
CHILD	XSC (2-3)	19 - 20	18 - 19	19 - 20	35 - 37
	SC (4-6)	20 - 21	18 - 20	21 - 22	37 - 39
	IC (6x-7)	22 - 24	20 - 21	23 - 25	40 - 43
	MC (8-10)	25 - 27	21 - 23	26 - 28	44 - 48
	LC (12-14)	26 - 29	23 - 25	29 - 31	49 - 52
ADULT	PA	30 - 32	23 - 25	31 - 34	51 - 54
	SA	30 - 33	23 - 26	33 - 35	54 - 57
	MA	34 - 37	25 - 28	35 - 38	57 - 60
	LA	37 - 41	28 - 32	38 - 42	61 - 64
	XLA	41 - 43	32 - 35	42 - 45	64 - 67
PLUS	1X	43 - 45	36 - 39	45 - 48	67 - 70
	2X	45 - 48	39 - 43	48 - 51	70 - 73
	3X	48 - 50	43 - 46	51 - 54	73 - 76

See page 62 for fabric and color options.

QUICK SHIP

QUICK SHIP COLORS

Color	Quick Ship
	065
	076
	068
	073
	067
	078

QUICK SHIP SIZE CHARTS

Delivers in 2-4 weeks.
Available in youth & adult sizes.
One-color embroidery is included in the price of the shell for orders of 6 or more pieces of the same style/color.

STANDARD SIZES

Size	Height	Chest	Waist	Hips	Back Length (base of neck to waistline)	Inseam Length
18M	33	20	19½	20	10	12
2T	35	21	20	21	10½	13¼
3T	38	22	20½	22	11	15¼
4	41	23	21½	23	11½	17
5	44	24	22	24	12	18¾
6	46½	25	22½	25½	12½	20¾
7	50½	26	23	27½	13	22
8	52½	27	23½	28½	13½	23¼
10	55	28½	24½	30	14	25
12	58	30	25½	32	14½	26½
14	61	32	26½	34	15½	28
16	62½	34	27½	36	16	28½
18	62½	36	30	38	16	28½
20	62½	38	32½		16	28½

For styles 9000-9350

EXTENDED SIZES

Size	Height	Chest	Waist	Hips	Back Length (base of neck to waistline)	Inseam Length
22	57½	39	33	41½	17	30½
24	58	40½	33½	43	17¼	30½
26	58½	42½	34½	45	17½	30½
28	59	44½	36½	47	17¾	30½
30	59½	46½	38½	49	18	30½

(Extended sizes are not in stock)

9316



Full Length Jersey
9316 Child Sizes:
(2T, 3T, 4T, 5, M, L, XL)
9317 Adult Sizes:
(XS, SA, MA, LA, XL, 2XL)
Quick Ship colors only

JERSEY COLORS

Color	Quick Ship
	065
	076
	068
	073
	067
	078
	066
	071
	018
	043
	047
	079

EMBROIDERY

Quick Ship (pgs 50-55): One-color embroidery is included for orders of 6 or more pieces of the same style/color.

LETTERING STYLES - up to 3" in height

OB - Outline Block**

BD - Boffo Dak

DE - Designer

FA - Full Arched Block**



ME - Megaphone** **

CP - Cooper

PS - Plain Script

BS - Brush Script

BB - Basic Block

*Basic Block and Plain Script are available in a Megaphone on Style ME

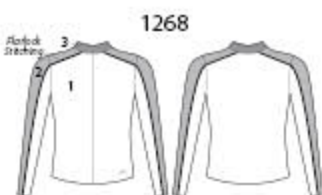
FB - Full Block

CS - Clean Sans

DS - Display Sans

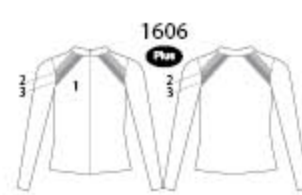
** Add \$3.00 for OB-Outline Block, FA-Full Arched Block and ME-Megaphone.

WOMEN'S DRI-LINE WARM-UPS



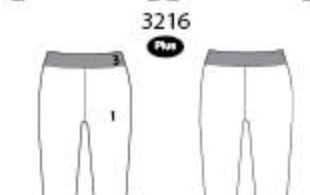
1268


 1590
Plus

 1597
Plus

 1606
Plus


1618


 3806
Plus

 1592
Plus

 3216
Plus

 Inseams:
MC 17 1/2", MA 17 3/4"
Front Rise:
MC 7 3/4", MA 8 1/2"

 7042
Plus

 Inseams:
MC 21 1/2", MA 22 1/4"
Front Rise:
MC 7 1/2", MA 8 1/4"


7080

 Inseams:
MC 13 1/2", MA 14"
Front Rise:
MC 5 1/2", MA 6"

 7129
Plus

 Inseams:
MC 13 1/2", MA 14 1/2"
Front Rise:
MC 7 1/2", MA 8 1/4"

 7325
Plus

 Inseams with cuff:
MC 10 1/2", MA 11 1/4"
Front Rise:
MC 6 1/2", MA 7 1/4"

 WOMEN'S DRI-LINE/STRETCH & BASICS
 (For Styles 1000 - 8260, 8358-8482)

	Size	Bust	Waist	Hips	Girth
CHILD	XSC (2-3)	19-20	18-19	19-20	35-37
	SC (4-6)	20-21	18-20	21-22	37-39
	IC (6X-7)	22-24	20-21	23-25	40-43
	MC (8-10)	25-27	21-23	26-28	44-48
ADULT	LC (12-14)	26-29	23-25	29-31	49-52
	PA	30-32	23-25	31-34	51-54
	SA	30-33	23-26	33-35	54-57
	MA	34-37	25-28	35-38	57-60
	LA	37-41	28-32	38-42	61-64
PLUS	XLA	41-43	32-35	42-45	64-67
	1X	43-45	36-39	45-48	67-70
	2X	45-48	39-43	48-51	70-73
	3X	48-50	43-46	51-54	73-76

WOMEN'S POLY WARM-UPS


 8549
Youth


8550


 8551
Youth


8650

 Inseams:
MC 21", MA 21 1/2"
Front Rise:
MC 21", MA 21"


9426

 Inseams:
MA 21 1/2"
Front Rise:
MA 11 1/4"

WOMEN'S POLY UNIFORMS

	Size	Bust	Back Length	Waist	Hips	Skirt Length	Dress Length
YOUTH	YXS	23	11 1/2	20	26 1/2	7	--
	YS	25	12 1/2	22	28 1/2	9	--
	YL	27	13 1/2	24	30 1/2	12	--
	YXL	32	15 1/2	28	34 1/2	15	--
	Y2X	34	16	30	36 1/2	15	--
	ADULT	2XS	26 1/2	15 1/2	21	31	13
XS		28 1/2	16	22	32	13	32
S		30 1/2	16 1/2	24	34	14	32 1/2
M		32 1/2	17	26	36	14	32 1/2
L		34 1/2	17 1/2	28	38	15	33 1/2
XL		36 1/2	18	30	40	15	34
PLUS	2XL	38 1/2	18 1/2	32	42	16	34 1/2
	3XL	40 1/2	19	34	44	16	35
	4XL	42 1/2	19 1/2	36	46	17	35 1/2
	5XL	44 1/2	20	38	48	17	36

MEI'S DRI-LINE



7297



8260



8358



8359



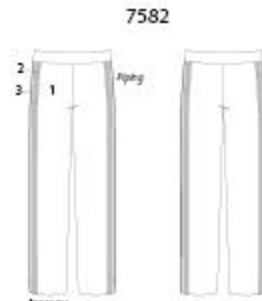
8391



7578



7580



7582

Items: 44C 28 54 44A 33 54"
Front Rise: 44C 8 54 44A 12 54"

Items: 44C 28 54 44A 33 54"
Front Rise: 44C 8 54 44A 12 54"

Items: 44C 28 54 44A 33 54"
Front Rise: 44C 8 54 44A 12 54"

MEI'S DRI-LINE/STRETCH

	Size	Chest	Waist	Inseam
CHILD	SC	24	22	
	IC	26 3/8	23	
	MC	28 5/8	25	
	LC	31	27	
ADULT	SA	35 - 37	28 - 31	35 - 37
	MA	37 - 40	31 - 33	37 - 40
	LA	40 - 43	33 - 35	40 - 43

See page 62 for fabric and color options.

MEI'S POLY



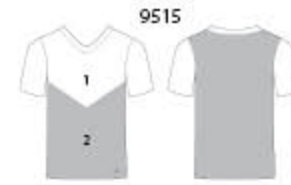
9318



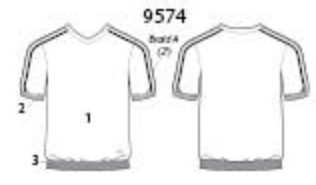
9427



9511



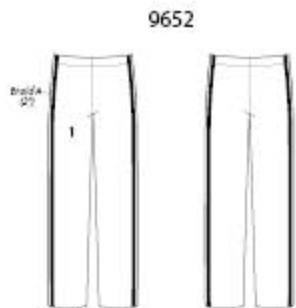
9515



9574



9507



9652

Items: 44A 21"
Front Rise: 44A 14"

Items: 44A 21"
Front Rise: 44A 14"

MEI'S POLY UNIFORMS

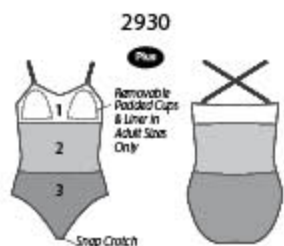
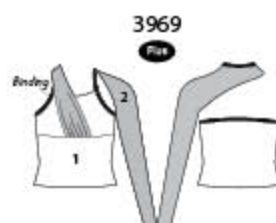
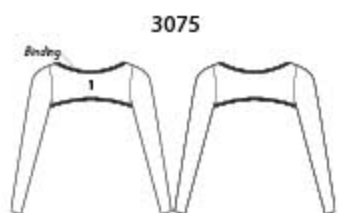
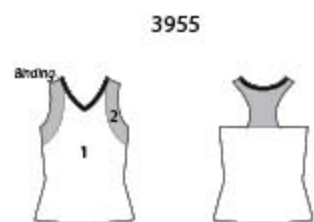
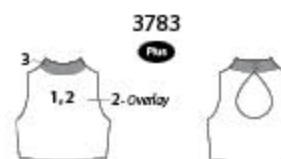
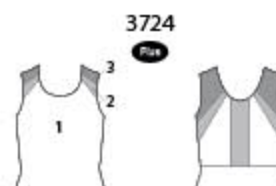
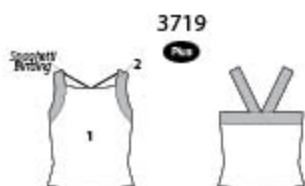
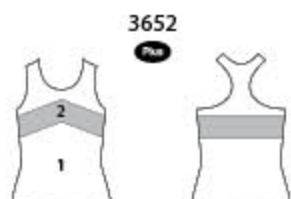
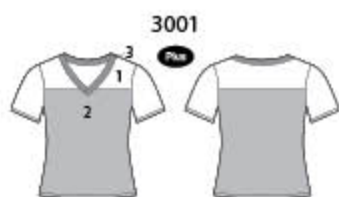
	Size	Chest	Waist	Inseam
ADULT	XS	31-33	24-26	29
	S	34-36	27-29	30
	M	37-39	30-32	31
	L	40-42	33-35	32
	XL	43-45	36-38	32
	2XL	46-48	39-41	33
	3XL	49-51	42-44	34
	4XL	52-54	45-47	34
	5XL	55-57	48-50	34

BRAID STYLES

11B - 1/2"		53C - 1"	
11C - 1"		53E - 2"	
11E - 2"			
22C - 1"		55C - 1"	
22E - 2"		55E - 2"	
23C - 1"		65E - 2"	
23E - 2"			
25C - 1"		75E - 2"	
25E - 2"			

See page 60 for fabric and color options.

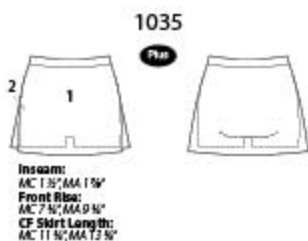
DANCE TEAM



WOMEN'S DRI-LINE/STRETCH & BASICS
(For Styles 1000 - 8260, 8358-8482)

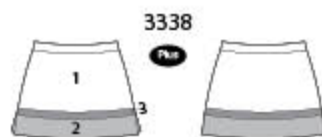
	Size	Bust	Waist	Hips	Girth
CHILD	XSC (2-3)	19 - 20	18 - 19	19 - 20	35 - 37
	SC (4-6)	20 - 21	18 - 20	21 - 22	37 - 39
	IC (6x-7)	22 - 24	20 - 21	23 - 25	40 - 43
	MC (8-10)	25 - 27	21 - 23	26 - 28	44 - 48
	LC (12-14)	26 - 29	23 - 25	29 - 31	49 - 52
ADULT	PA	30 - 32	23 - 25	31 - 34	51 - 54
	SA	30 - 33	23 - 26	33 - 35	54 - 57
	MA	34 - 37	25 - 28	35 - 38	57 - 60
	LA	37 - 41	28 - 32	38 - 42	61 - 64
	XLA	41 - 43	32 - 35	42 - 45	64 - 67
PLUS	1X	43 - 45	36 - 39	45 - 48	67 - 70
	2X	45 - 48	39 - 43	48 - 51	70 - 73
	3X	48 - 50	43 - 46	51 - 54	73 - 76

DANCE TEAM



1035

Inseam:
MC 1 3/4", MA 1 1/4"
Front Rise:
MC 7 1/2", MA 9 1/4"
CF Skirt Length:
MC 11 1/2", MA 13 1/2"

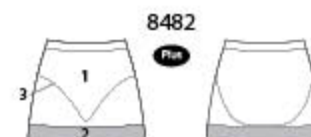


3338

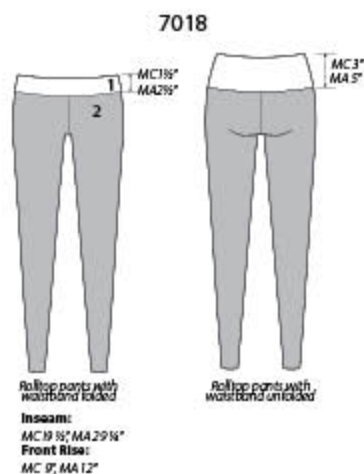


7291

Inseam:
MC 2", MA 2 1/2"
Front Rise:
MC 8", MA 9 1/2"
CB Skirt Length:
MC 1 7/8", MA 2 3/8"



8482



7018

Roll-top pants with
waistband folded
Inseam:
MC 19 1/2", MA 29 1/4"
Front Rise:
MC 9", MA 12"



7130

Inseam:
MC 19 1/2", MA 25 1/4"
Front Rise:
MC 8 1/2", MA 10 1/4"



7152

Inseam:
MC 27 1/2", MA 35 1/4"
Front Rise:
MC 8", MA 10 1/4"



7517

Inseam:
MC 20", MA 28"
Front Rise:
MC 7 1/2", MA 8 1/2"

Color	Dri-Line	Color	Dri-Line
Black	610	Dark Green	623
White	611	Bright Gold	620
Scarlet	616	Purple	619
Cardinal	633	Maroon	622
Columbia Blue	624	Tan	629
Royal Blue	617	Orange	628
Navy	621	Shadow Gray	491
Kelly Green	627	Heather Gray	414

Color	Shine On
Grape	234
Midnight Blue	200
Royal Blue	282
Ocean	233
Kelly Green	238
Lime	285
Chartreuse	209
Gold	284
Orange	239

Color	Shine On
Burgundy	235
Red	281
Red Cherry	215
Bubblegum	231
White Pearl	226
Silver	280
Platinum	237
Black	236

Color	Mesh
Purple	038
Sapphire	845
Royal	838
Turquoise	242
Crimson	697
Neon Pink	302
Pink	759
Nude	221
Mocha	056
White	192
Gray	064
Black	823

Color	Sequins
Black	792
Burgundy	995
Navy	723
Royal	654
Gold	104
Purple	941
Red	508
White	660
Berry	649
Kelly	966
Aqua	667

Color	Making Waves
Fuchsia	879
Teal	875
Silver	864

LOVE YOUR LOOK?
DON'T FORGET TO
SHARE!



@MOTIONWEARCHEER
#motionwearcheer



Check out our **NEW**
digital coloring tool
at cheermotionwear.com



MOTIONWEAR®

1315 Sunday Drive | Indianapolis, IN 46217-9334 | motionwear.com

Order desk: (800) 869-0609 | Toll-free fax: (888) 869-0609 | © 2019 Motionwear, LLC