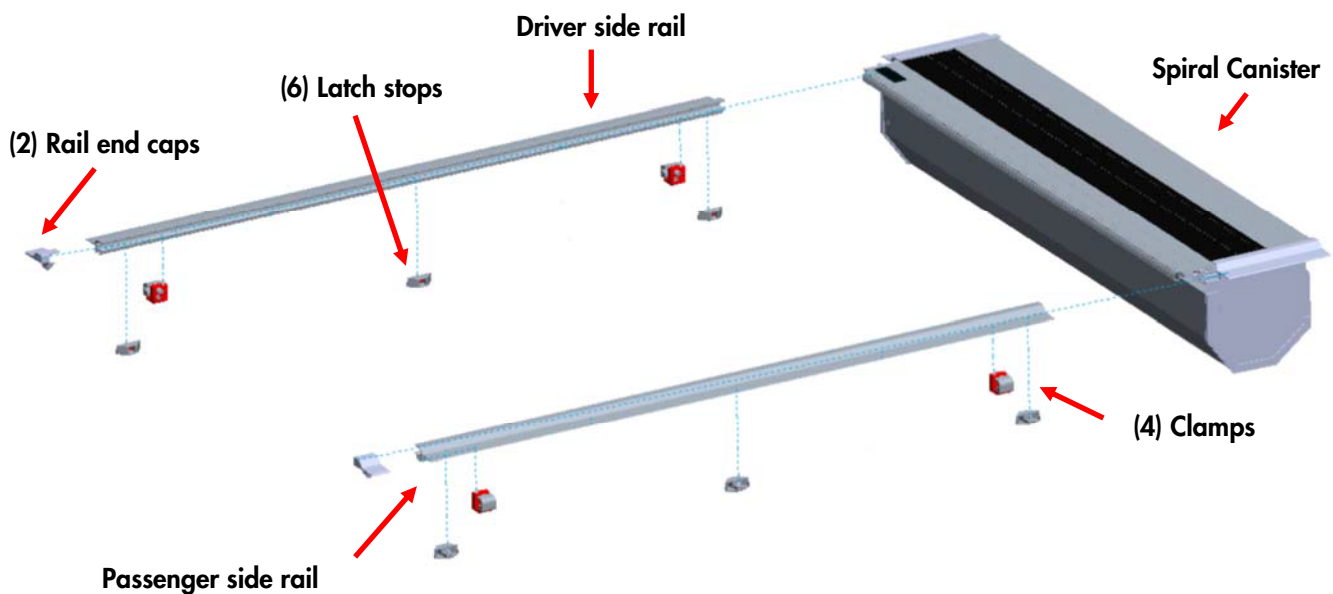




RETRACTABLE TRUCK BED COVER

Installation Instructions

©RHLLC, 2017



Exploded View

Table of Contents

If you have a Toyota Tundra 2007-up, please see page 6 for special installation instructions!

Pre-assembly Guidelines	Page 1	Steps 9-10	Page 5
Steps 1-4	Page 2	Toyota Tundra 5.5' '07-up	Page 6
Steps 5-6	Page 3		
Steps 7-8	Page 4		

Pre-assembly Guidelines

Please read and follow instructions before un-boxing and assembling the bed cover.

Keep boxes and packing until installation is complete. Unpack carefully to prevent scratching.

DO NOT remove cork patch from cover until after installation is complete.

Average install time is 45 min - 1 hour.

Parts Checklist:

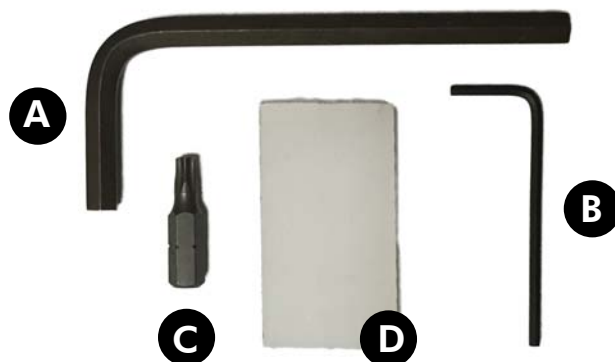
((4) 5/16-18 x 1.625 fasteners (or 5/16-18 x 2.25 fasteners and lock washer for all GM models)	A
((8) 5/16-18 x 0.500 fasteners	B
((12) 5/16 Nylon locknut	C
((2) 10-32X0.750 Torx	D
((4) 1/2-13X1.250 Socket head nylon set screws	E
((4) Clamps (4 clamp spacers for certain GM models)	F
((6) Latch stops	G
((2) Rail end caps	H
((2) 6-32 x 0.250 screws	I



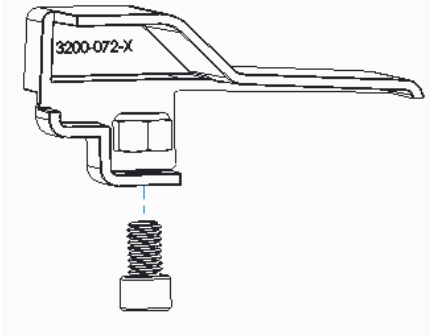
Tools Required:

- Tape measure
- Hex Driver Handle or Cordless Drill/Driver

6mm Allen wrench	A
5/64" Allen wrench	B
T25 Torx bit	C
1/8" Measuring tool	D



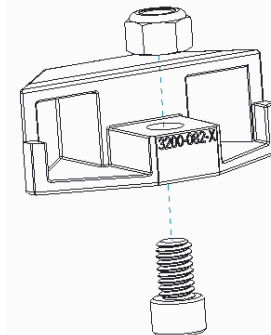
1 Assemble rail end caps



Insert the 5/16-18 x 0.500 bolt (B) through the hole in the bottom of the rail end cap. Start threading the 5/16" nylon locknut (C) onto the bolt but leave loose.

Repeat on other rail end cap.

2 Assemble latch stops

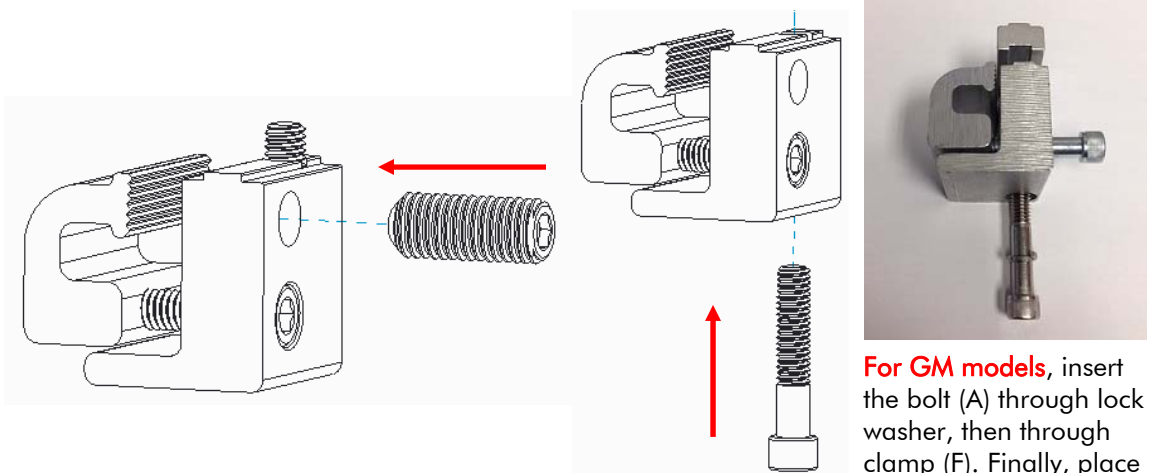


Insert the 5/16-18 x 0.500 bolt (B) through the hole in the bottom of the latch stop. Start threading the 5/16" nylon locknut (C) onto the bolt but leave loose.

Repeat on all other latch stops.

3 Assemble clamps

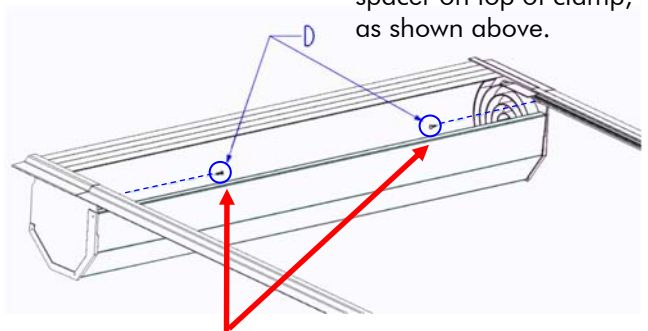
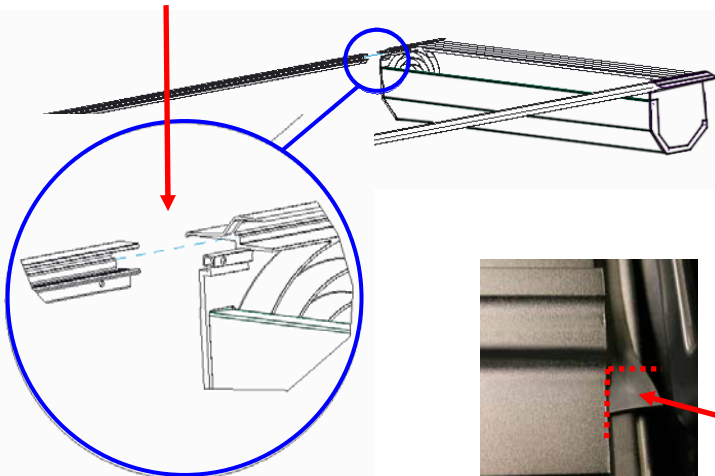
Insert the nylon set screw (E) into the side of the clamp. Then insert the 5/16-18 x 1.625 bolt or 5/16-18 x 2 bolt (A) into the bottom of the clamp. Repeat on all other clamps.



For GM models, insert the bolt (A) through lock washer, then through clamp (F). Finally, place spacer on top of clamp, as shown above.

4 Assemble cover on truck bed

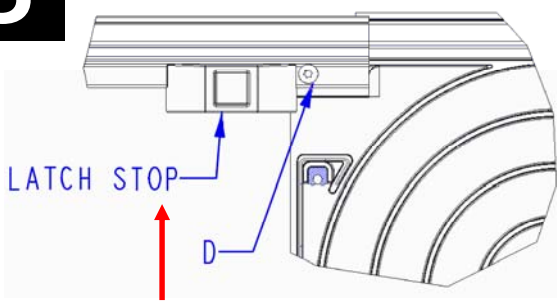
Place canister assembly onto truck bed rails right behind the cab. **Center canister assembly across width of truck.** Locate holes on underside of rails and slide each rail onto respective canister tab.



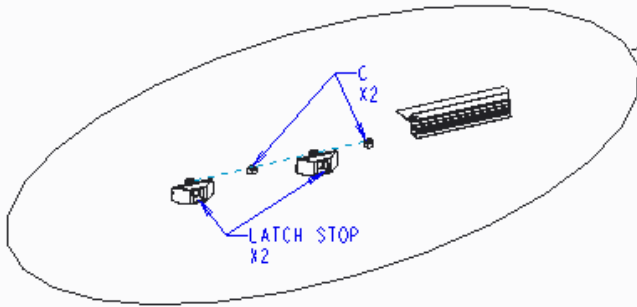
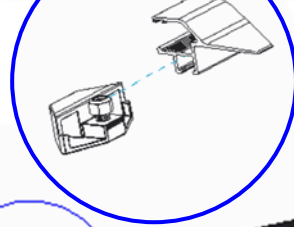
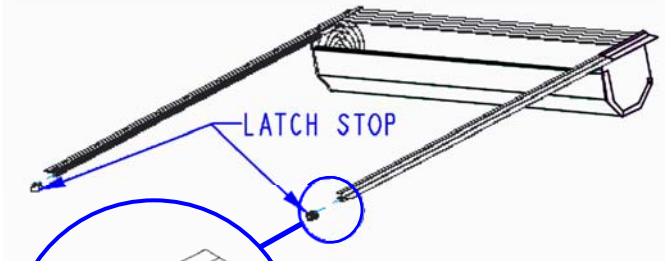
Insert the 10-32 x 0.750 Torx (D) in each of the holes on the rails until the flange on fastener is touching the surface of the rail. The fastener should protrude slightly from the hole on the back side of the rail. **Tighten fully.** Completed best by using a driver and a T25 bit. **NOTE:** fastener may be slightly difficult to insert using Hex driver handle due to self-tapping feature of fastener.

NOTE: The front cover weather-strip must lay flat across the truck bed. Make certain it is pointed towards the cab. If it extends past the bed rail cap, trim to fit right up to the cap on truck bed.

5 Insert latch stops



Slide 1 assembled latch stop into each rail opening and position it 1/16" away from fastener (D). Tighten the fastener head on the latch stop until it does not move. Do not exceed 5ft-lbs of torque when tightening the latch stops.



3 latch stops are supplied for each rail. 2 latch stops and 2 nylon locknuts (C), used later in step 8, are required for each rail (front and rear) in order to function properly. If less latching positions are desired use less latch stops. **Must have the same amount in each rail.**

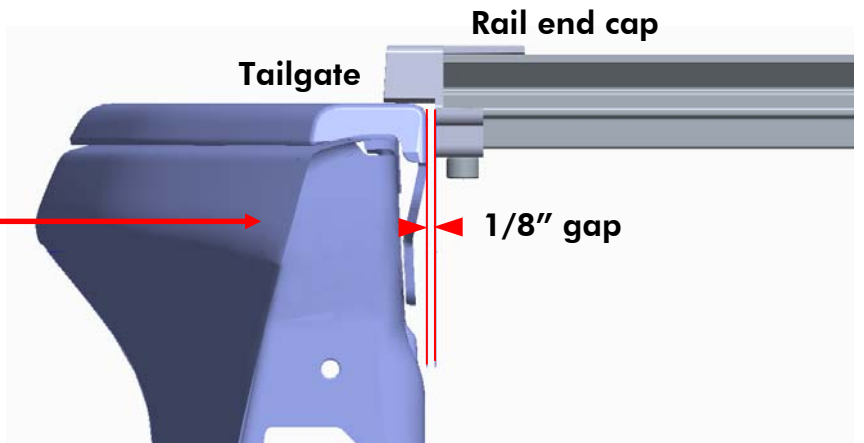
NOTE: If all latch stops are desired, insert 2 latch stops and 2 nylon locknuts (C) into each rail channel. See figure above for proper order of installation. Do not worry about the position it will be adjusted later.

When inserting the nylon locknuts (C) be sure the nylon portion faces up in the rail slot.

6 Attach rail end caps and position cover



To cap off the driver and passenger side rails, slide the rail end caps onto their mating rail. Tighten bolt on bottom (B) and fastener on top (I) to lock position of each rail end cap. Do not exceed 5 ft-lbs of torque when tightening the bolts.



Position cover so that there is a 1/8" gap between the truck tailgate/tailgate protector and the rail end cap. Use the provided 1/8" measuring tool.

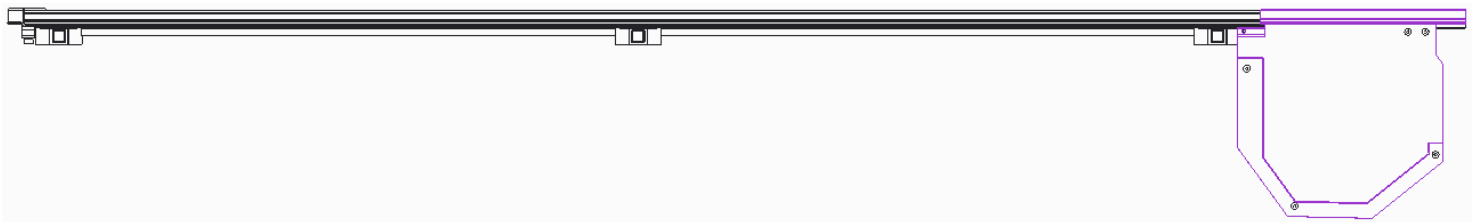
7 Position the latch stops on the rails

On each rail, slide the rearmost latch stop flush with the Rail End Cap and tighten bolt (B) on underside until latch stop is tight and doesn't move.



The remaining latch stops can be placed at the customer's desired location anywhere in the rail as long as they are in the same position on both rails. **It is crucial that these are positioned at the same place on each rail in order for the cover to function properly.**

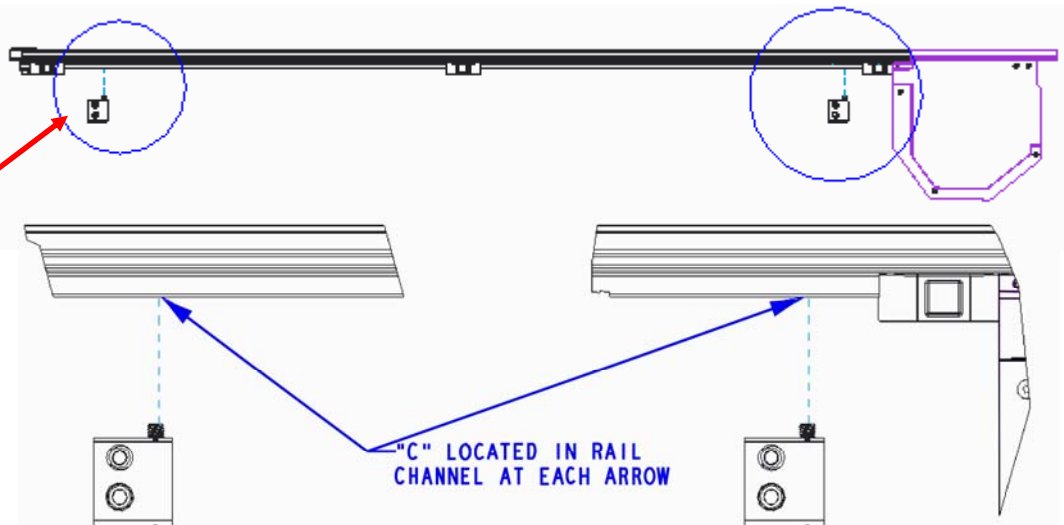
Figure below illustrates the use of all 3 latch stops evenly spaced along the rail length.



Once the desired amount of latch stops are positioned the same in both rails, tighten the bolts (B) on the bottom of each latch stop until they do not move. Do not exceed 5 ft-lbs of torque when tightening.

8 Install clamps

Locate the two nylon nuts (C) in each rail (inserted in step 5). Place clamps in channel as close to the front and rear latch stops as possible. (shown to the right). Then line up bolts with nuts in channel. Start threading the bolt but leave loose.

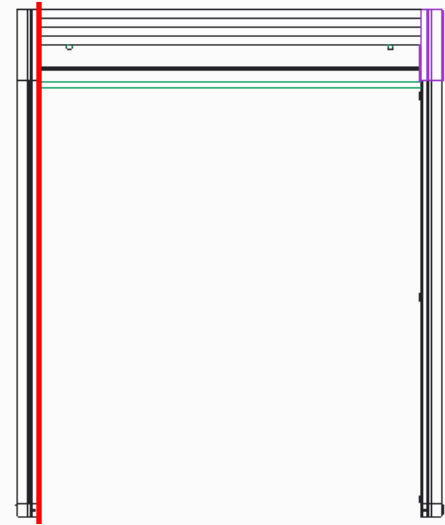
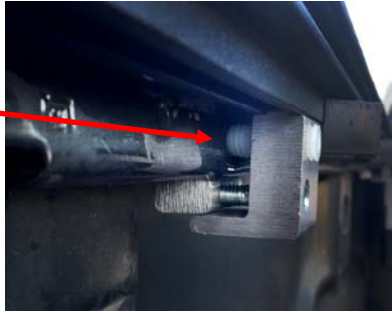


Position clamps at a location where there are no obstructions from any parts of truck bed, e.g. truck, box geometry, plastic bed rail caps, etc. Tighten bolts so clamps no longer slide in rail channel. Repeat on opposite rail at same location. Do not exceed 5 ft-lbs of torque when tightening.

9 Align aluminum rail

Align the aluminum rails with the spiral rail section so that they are in a straight line (see red line on image).

Then turn nylon set screw (E) on each clamp until it contacts the truck bed rail.

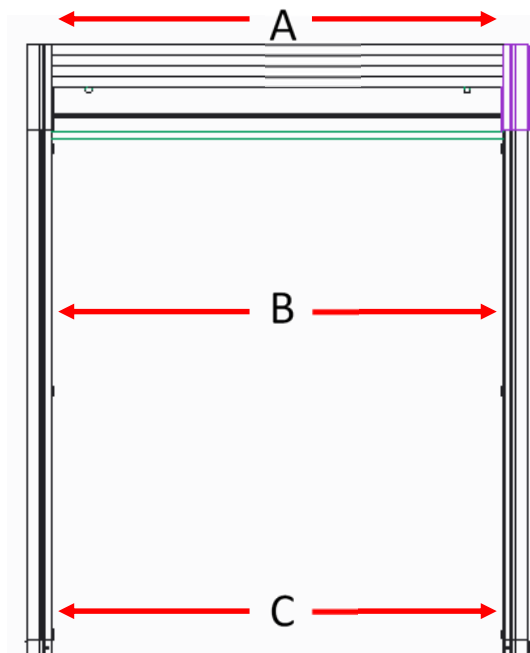


10 Measure and adjust rail position

Be sure rails are not tipped in or out of truck bed. Rails must be parallel to one another in order to function properly. Measure cover at the 3 locations shown in the image. **The measurements for A, B, and C should all be the same.** Once rails are parallel, tighten the bolt in the front face of each clamp until clamp is secured to truck.

If adjustments need to be made loosen clamps and turn the nylon screw in or out to achieve parallel rails. The same adjustment needs to be made on the opposing rail. Retighten clamps to secure cover to truck.

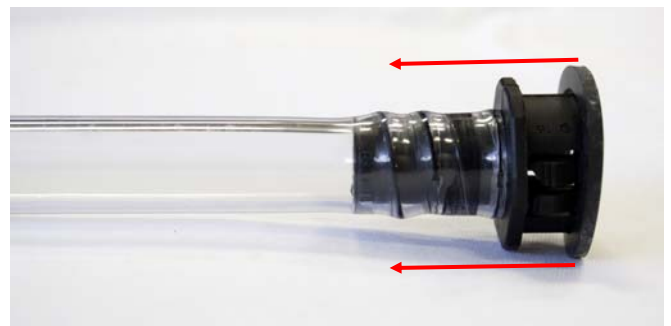
Once again measure the distance between the rails at locations A, B, and C along the cover. If necessary, continue making adjustments until rails are parallel within 1/16".



11 Install drain tubes

Insert tubes into the holes in the bottom of the canister and turn to the right. **2 clicks means they are secured.**

On some trucks there are factory drain holes in both front corners, on others there are plastic plugs that can be drilled out for the tubes. You can enlarge existing holes or drill new holes in the front wall or floor if needed. Be careful of what is behind when you drill. If using a plastic bed liner, then holes can be drilled through the liner only. Cut the tubes to length to fit in desired locations.



FINAL NOTES: When cover is not in use, make certain it is secured in latch stops to prevent cover from rolling.

Toyota Tundra 5.5 Ft. bed 2007-up Installation

Check the parts shown here, this model has 2 different styles of clamps and different mounting instructions.

(2) Clamps that will be used at the TAILGATE end in step 8.

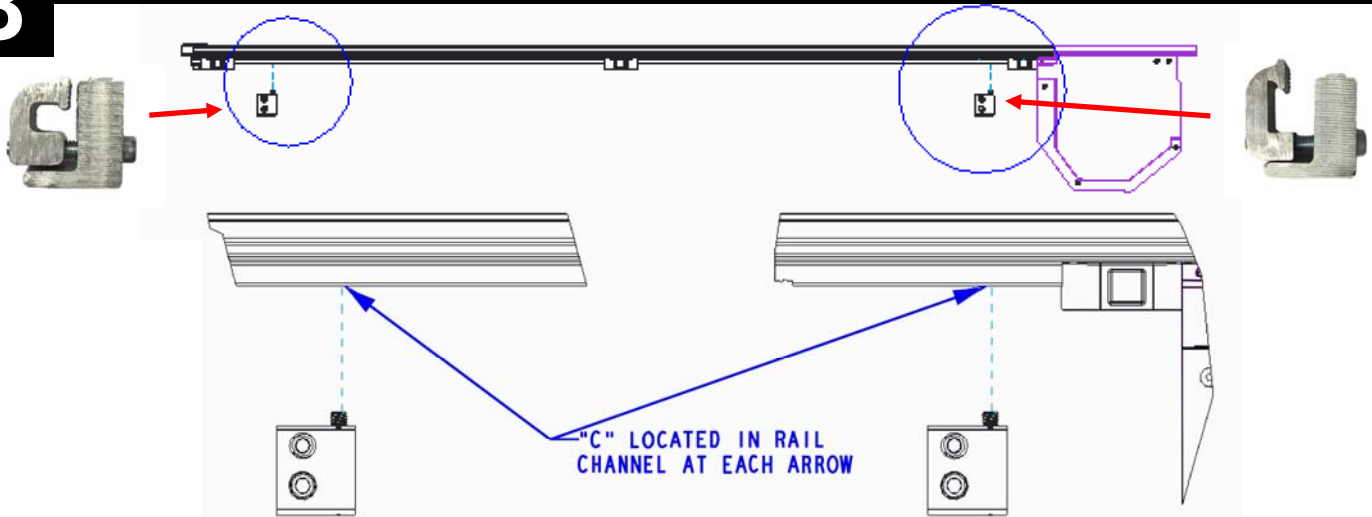


(2) Clamps that will be used at the CAB end in step 8.



Continue with the instructions on page 1, then refer  back to this page for STEP 8 to install the clamps.

8 Install clamps



Locate the two nylon nuts (C) in each rail (inserted in step 5). Insert the longer clamps into the rail channel first as close to the latch stops as possible on the CAB end. Now insert the shorter clamps into the rail channel as close to the latch stops on the TAILGATE end as possible (see picture above).

Then line up bolts with nuts in channel. Start threading the bolt but leave loose.

Position clamps at a location where there are no obstructions from any parts of truck bed, e.g. truck, box geometry, plastic bed rail caps, etc. Tighten bolts so clamps no longer slide in rail channel. Repeat on opposite rail at same location. Do not exceed 5 ft-lbs of torque when tightening.

Continue with the rest of the installation instructions on STEP 9 (page 5) .





The manufacturer warrants each new retractable pickup bed cover for (2) years for the failure of materials and workmanship to the original owner (non-transferable).

Items not covered under the warranty:

- Normal wear over the life of the retractable cover
- Water intrusion at any location or any damage caused as a result
- Other dealer and/or purchaser installed parts & accessories

Conditions which will void all warranty:

- Altering the cover in any manner without written approval from the manufacturer
- Use for any purpose other than the normal intended use
- Misuse, negligence or accident
- Installation of any other part or accessory which comes in contact with or may interfere with the cover without written approval of the manufacturer
- Failure to adequately secure cargo to prevent damage to the cover
- Acts of God or other external causes

Conditions and Limitations:

This warranty is subject to certain conditions and limitations including, but not limited to, the following:

- Any part of a retractable pickup bed cover that is found to be defective under the terms of this warranty will be repaired or replaced using either new or reconditioned parts at the discretion of the manufacturer.
- In determining what constitutes a failure under the terms of this warranty the decision of the manufacturer will be final.
- This warranty is applicable to the original purchaser only and is not transferable to subsequent purchasers.
- The manufacturer does not accept any responsibility in connection with the installation of any of its products by its dealers or agents.
- Without regard to an alleged defect of its products the manufacturer under any circumstances does not assume responsibility for loss of time, inconvenience, revenue, or other consequential damage including, but not limited to, expenses for telephone, food, lodging, travel, loss or damage to the vehicle the products are installed on or loss or damage to personal property of the purchaser or user of the products.
- The manufacturer does not undertake responsibility to any purchaser for warranty expressed or implied by any of its dealers, distributors or agents beyond which is contained herein.
- The manufacturer reserves the right to make changes in the design of, improvements to, or warranty of its products without imposing any obligation upon itself to provide the same for any products theretofore manufactured.
- Under no circumstances shall the manufacturer be liable for special, indirect, incidental or consequential damages sustained in connection with this model cover.

Please call 800-206-4070 with any questions, to file a warranty claim, or to discuss a return.

Retrax Customer Support: 800-206-4070