

# Replacement Instruction for Rolling Covers & Manual Canisters

## Table of Contents

<b>Manual Rolling Cover Replacement</b>	<b>Page 2</b>
<b>Manual Spiral Canister Replacement</b>	<b>Page 3</b>
<b>Electric Rolling Cover Replacement</b>	<b>Page 4-5</b>
<b>Honda Ridgeline Rolling Cover Replacement</b>	<b>Page 6-7</b>
<b>Parallel Rail Instructions</b>	<b>Page 8</b>

# Rolling Cover Replacement (Polycarbonate or Aluminum)

**\*\*CANISTER USED FOR SHIPPING ONLY\*\***

**Do NOT Use For Installation**

## STEP 1-3: Remove lock assembly



Pull the cover to the tailgate and open the tailgate. Remove lock bracket bolt (10mm) from below the lock.



The bracket is removed from below.



The lock is removed from the top. Lift the lock up and slide it over to the passenger side of the lock opening to remove. The lock may need to be partially open and turned at a right angle for clearance when removing lock.

## STEP 4: Pull the existing cover out the back. Using 2-3 people pull both sides out evenly.

## STEP 5-6: Install replacement cover



Hold the rolling cover up slightly as it is slid into the rails. Take it slow and watch out for your fingers, as you are sliding the cover in. Slide both sides in evenly. The polycarbonate may catch the bottom on the rail as it is rolled in. To prevent this, press up slightly on the bottom of the cover where it enters the rail.

## STEP 7-8: Reinstall the lock assembly. Do not over tighten bolt.

**NOTE:** Check to be sure cover is rolling smoothly. Then remove the protective plastic film. Check to make certain the rails are parallel, see page 8 for specific instructions.

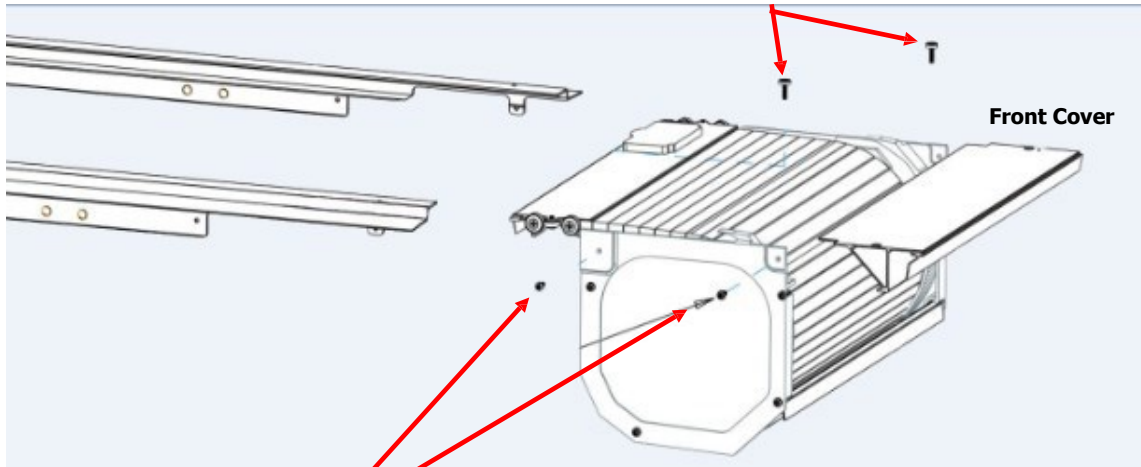
# Spiral Canister Replacement

## STEP 1: Remove the bed cover

Remove clamps/bolts holding the rolling cover to the pickup bed. Lift the cover straight up using one person on each side. Lift with one hand at the front of the rail and the other hand 2 feet to the back. Set on floor or large table.

## STEP 2: Remove the front cover

Remove both front cover screws using a 1/8" Allen wrench. Pull the front cover out of the front of the rails.



## STEP 3: Remove both rails

Remove the 2 rail mounting screws on each side with a #2 Phillips screw driver. Hold the rolling cover and slide the rails back to clear the canister.

## STEP 4: Remove from canister

Remove rolling cover from canister. Carefully roll the cover out onto the floor or large table.

## STEP 5: Replace canister

Roll the cover into the new replacement canister.

## STEP 6: Reattach Rails

Replace both rails. Start by sliding the cover and bearings into the channel of the rail. Continue to thread the rail onto the cover, holding the rail level to help line everything up. It may help to lift on the cover when sliding the rail on. Tighten screws securely. DO NOT use Loctite.

## STEP 7: Reattach front cover

Replace front cover. Tighten both screws.

## STEP 8: Reinstall cover

Lift bed cover into truck. Pull both rails back to 1/8" gap from bottom of rolling cover rail to inside face of closed tailgate. Attach clamps/bolts to secure bed cover. Adjust the rails so they are parallel to each other, see page 8 for specific instructions.

# Electric Rolling Cover Replacement

**Tools Needed:** 3/8" open wrench, 7/8" socket or wrench, Phillips screwdriver

## STEP 1: Disconnect wires and remove covers

Make sure the cover is 1" from being in the closed position. *If motor is not functioning properly and your cover is rolled into the spiral canister please contact us for assistance.*

Remove all power to the system by disconnecting the wire harness that leads to the battery.

Unclamp or unbolt the rails from the bed of the truck and remove power cover from bed.

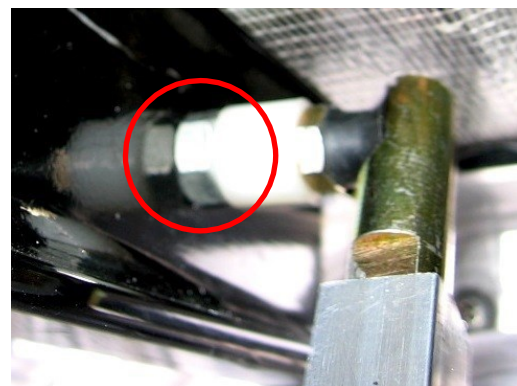
Remove Phillips screws (you may have a countersunk flat head Allen screw) and slide front cover out of the front of the rails.

Using a 7/16" wrench (for the Nylock nut in front) and a 3/8" wrench (on the ball joint in back), remove the Nylock nuts from the linkages and push the threaded studs out of the front channel.

**7/16" wrench**



**3/8" open wrench**



Use plastic tie to secure each linkage to the shaft so they do not get caught in the cover when rolling out of the spiral.

## STEP 2: Remove bearing stops and rails

A) Once cover is completely out of canister, use a Phillips screwdriver to remove the screws holding the bearing stops (one on each spiral) to the spirals.

B) These are located at the top of the spiral. The screw head is to the inside of the canister.

C) Using a Phillips screwdriver, remove the 2 screws per rail holding them to the spirals. Located on the sides of the spirals just below the rail.

D) Remove the rails (opposite of the installation instructions).



\*\*\* Pictures shown with clear see-through pieces to better illustrate items.

## Installing a new Electric Rolling Cover:

### STEP 1: Install new cover

Roll the new cover into the canister. Attach rails according to the installation instructions. Roll the cover out of the canister stopping 1" from the ends of the rails (closed position).

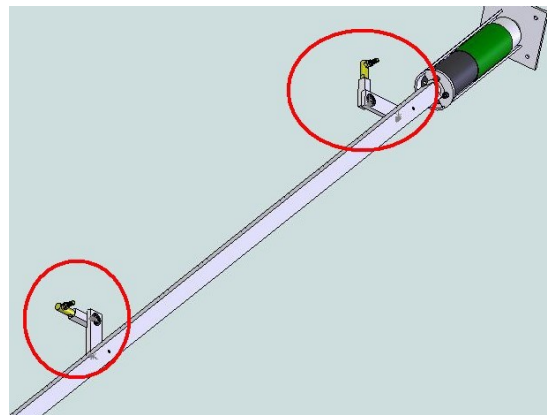
### STEP 2: Attach bearing stops to canister

Using a Phillips screwdriver, attach the bearing stops, making sure the screws are sunk flush into the plastic spiral. Easiest way is to push screw into place with your hand and then tighten into bearing stop with the Phillips screwdriver.

### STEP 3: Attach linkages

Cut the plastic ties holding the linkage to the shaft. Attach the linkage to the front channel making sure it is facing the same direction as before (locknut should be facing you).

Make sure the threads reach the locking portion of the locknut. If they do not, the jam nut on the back side needs to be retightened. Make sure the joints of the linkages are pointing toward the center of the canister.



### STEP 4: Reinstall cover to truck

Slide front cover back into place in the rails and replace the Philips screws and screw caps.

Reinstall the power cover on the truck bed. Refer to installation instructions.

Open and close the cover 3-5 times, check to make certain the rails are parallel. See page 8 for specific instructions.

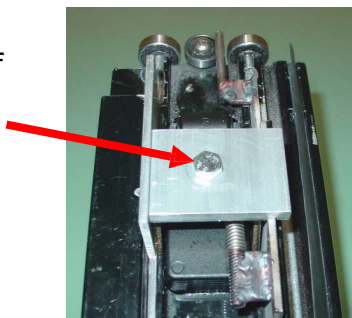
# Honda Ridgeline Rolling Cover Replacement (Before Serial #51124986)

**NOTE:** Follow these instructions for models received with serial numbers **before 51124986**. The serial number is located on a silver sticker underneath the rolling cover, next to the lock assembly. Remove the lock assembly before you take the rolling cover off your truck.

## Lock assembly removal:

### STEP 1: Remove bolt

Use a 10mm wrench to remove bolt from bottom of lock. Two pieces will be removed, be sure to save them both.



### STEP 2: Remove lock

Tap on bottom of lock until the back part of it is out of the slot. Slide lock toward the passenger side until it is at the far end of the slot as shown. You can now lift it straight out of the slot.



### STEP 3: Pull out spring

Carefully pull out the attached spring and locking plate. You may have to push the lock towards the driver side to more easily remove the spring and locking plate.



## Cover removal and replacement:

### STEP 1: Remove rolling cover

Roll cover open. Remove two screws, one at the front of each rail, below tie-downs. Carefully remove the top of the black plastic caps and remove the screws using a #2 Phillips screwdriver. Next, remove the two Allen head screws that are holding the rolling cover rails to the rear posts near the tailgate. Using two people, carefully remove the complete bed cover. Properly support the canister to prevent the drain tubes from pushing into the bottom of the canister.

### STEP 2: Remove front cover

Remove the front cover. Carefully peel back a portion of the adhesive backed front cover weather-strip from underneath the front of both rails and slide out the front cover.

### STEP 3: Remove rails and pull out front cover

Remove both rails from the canister. Use a #2 Phillips screwdriver to remove screws from both sides. Pull the rolling cover from canister using 2-3 people.

### STEP 4: Assemble new cover

Roll the new cover into the canister. Reinstall both rails. Slide the front cover back into place and glue the front cover weather-strip back into place below the rails.

### STEP 5: Reinstall cover and lock

Reverse the steps to reinstall the cover back into the bed. Reverse the steps to reinstall the lock.

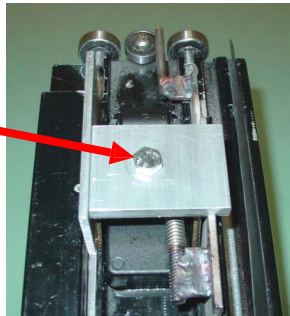
# Honda Ridgeline Rolling Cover Replacement (After Serial #51124986)

**NOTE:** Follow these instructions for models received with serial numbers **after 51124986**. The serial number is located on a silver sticker underneath the rolling cover, next to the lock assembly. Remove the lock assembly before you take the rolling cover off your truck.

## Lock assembly removal:

### STEP 1: Remove bolt

Use a 10mm wrench to remove bolt from bottom of lock. Two pieces will be removed, be sure to save them both.



### STEP 2: Remove lock

Tap on bottom of lock until the back part of it is out of the slot. Slide lock toward the passenger side until it is at the far end of the slot as shown. You can now lift it straight out of the slot.



### STEP 3: Pull out spring

Carefully pull out the attached spring and locking plate. You may have to push the lock towards the driver side to more easily remove the spring and locking plate.



## Cover removal and replacement:

### STEP 1: Remove rolling cover

To remove the rolling cover, you must remove the white nylon lock-stop from the rear of the driver side rail. Removal can be done with a pliers or vice grip. Turn lock stop counter clockwise.

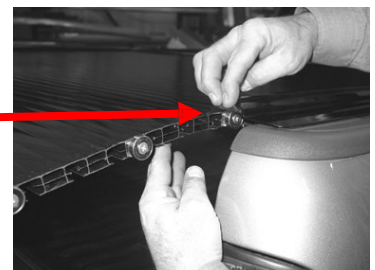


### STEP 2: Pull cover from canister

Start pulling the rolling cover from the canister. Using 2-3 people, pull both sides out evenly until the cover is completely out of the channels.

### STEP 3: Replace cover and lock assembly

Start rolling the replacement cover into the channel of the rails. Slide the cover in evenly, carefully slide the cover under the rubber flap at the rear of the rails. Lift slightly on the cover as it enters the rails. **After cover is in, replace the white nylon lock stop onto the driver side rail and tighten.** Reinstall lock assembly into the replacement cover.



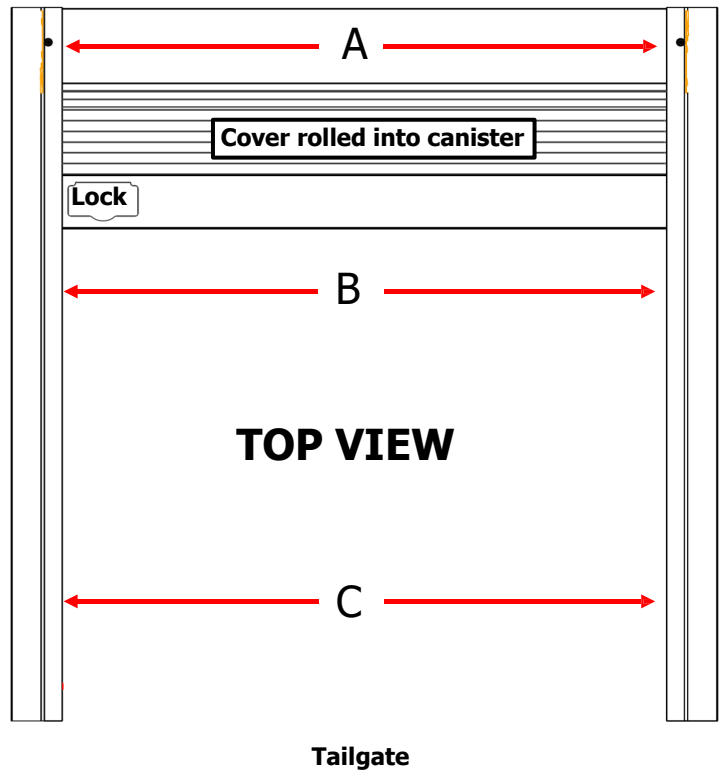
# Parallel Rail Instructions

## Measure distance between the rails

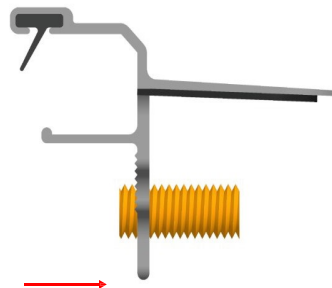
Measure the distance at point **A** (above front cover).

Then measure at points **B** and **C** (above the clamps), they should be the same as point **A**.

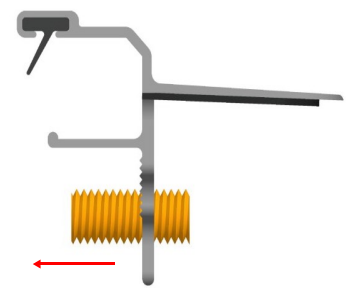
**The rails must be parallel, if not, then adjustments are needed. Proceed to steps below.**



## Adjust the distance between the rails



**\*Rails too far apart  
= clockwise**



**\*Rails too close =  
counter clockwise**

Remove clamp and turn both of the white nylon adjustment screws, using a 1/4" Allen wrench. One complete turn of adjustment screws = 1/16" of adjustment.

**Some models do not use adjustment screws. Refer to the appropriate manual section for proper adjustment instructions.**