



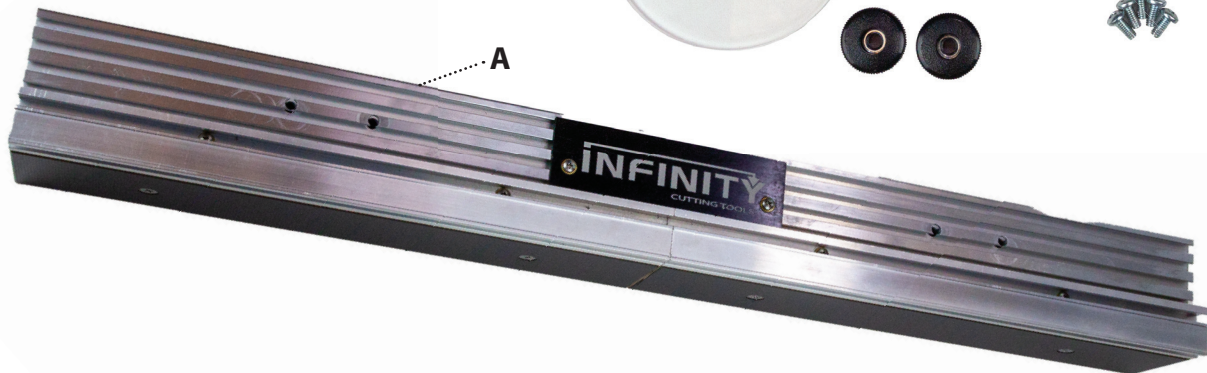
Professional Router Table Fence 2.0

Part # PRTF-200

Congratulations on purchasing your Infinity Professional Router Table Fence. This fence is designed to fit any router tabletop that has either a pair of 3/4" x 3/8" miter T-tracks or 1/4-20 T-tracks on 17" or 21-1/2" centers. It mounts perfectly to all Infinity Professional Router Table Tops and packages including; RTP-103, RTT-029, and RTT-047.

Parts List

- A. Main Fence Assembly
- B. Offset Jointing shim (Not Pictured), 1x
- C. 18" adhesive back ruler set (Not Pictured), 1x
- D. Dust Port, 1x
- E. Dust elbow, 1x
- F. Router Bit Guard w/hardware, 1x
- G. End Plate, 1x
- H. Dust Deflector Plate, 1x
- I. 2" Star Knobs, 2x
- K. T-Track Adapter, 2x
- L. 1/4-20 x 4" hex bolt, 2x
- M. 1/4" oversized washer, 2x
- N. 8/32 x 3/8" thread cutting screws, 10x



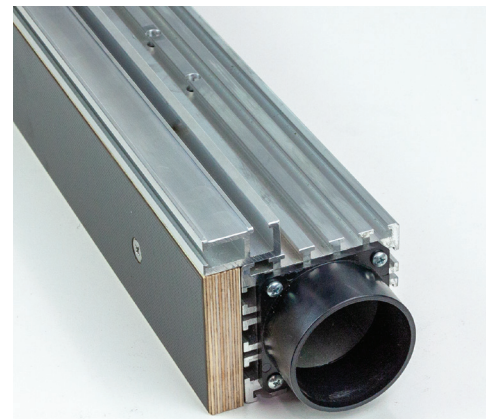
310 Mears Blvd • Oldsmar, FL 34677

P: 813-881-9090 | 1-877-872-2487 - Order Online 24/7: InfinityTools.com

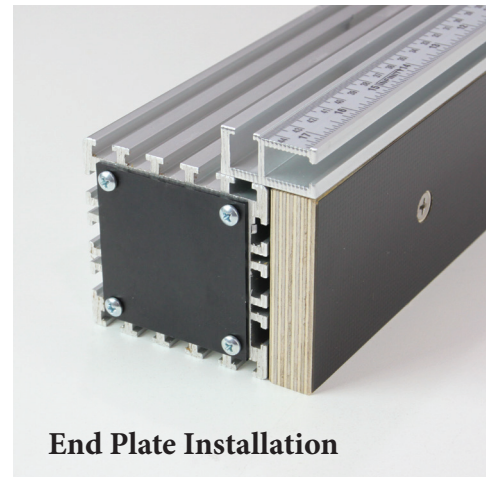
Assembly

Step 1, Install Dust Port, Dust Deflector Plate, and End Plate.

- The Infinity Professional Router Table Fence 2.0 uses a unique design that allows the dust collection port to be mounted at either end of the fence.
- Choose the end of the fence that best suits your application. Using a #2 Phillips screwdriver, install the Dust Port (D) using 4x 8/32 x 3/8" thread cutting screws (N).
- Open or remove the Fence Faces, top Rails and Infinity Nameplate to access the router bit opening. Install the Dust Deflector Plate (H) inside the router bit opening using 2x 8/32 x 3/8" thread cutting screws (N). A "Stubby" #2 Phillips screwdriver is recommended. Make sure this plate is installed opposite the dust port. Reinstall or reposition the faceplates, top rails, and nameplate.
- Adjusting the top Rails is easy. With the top rails loose lay the fence face down on a flat surface and tighten the four mounting screws. Confirm that the fence faces and top rails are aligned with a straight edge or square.
- Install the End Plate (G) on the fence opposite the dust port using the remaining 4x 8/32 x 3/8" thread cutting screws (N).



Dust Port Installation



End Plate Installation

Step 2, Install Rules and Bit Guard.

- Ensure that the tops of the fence rails are clean and free of dirt and oil.
- Apply the rules (C) so that the graduations start at the center of the fence and read outward, one rule reads left to right and the other right to left. Each rule has an alignment diamond and a small amount of extra length at each end to allow trimming. Use the diamond to confirm the rules are installed properly.
- The split infeed and outfeed fence design allows the top rails to be adjusted independently so the rules will read accurately for your specific application.
- Install the Router Bit Guard (F) on the forward-facing T-Tracks using the included T-bolts and knobs to secure the guard to the fence at your desired location and height.
- The Router Bit Guard perform two important functions. To protect the user from accidental contact with the router bit or flying debris, and to close the fence opening and improve dust collection. For the best performance we recommend using the Router Bit Guard whenever possible.



Rules & Bit Guard Installation

Step 3, Install the fence onto your router table.

- **Install the T-Track Adapters (K) and ¼-20 x 4” hex head bolts (L) into the tracks on your router table.**
- **Install the fence (A) over the bolts so that the bolts pass through the body of the fence through the pre-drilled holes.**
- **Install the ¼” oversized washers (M) and 2” Star Knobs (I) to lock the fence in place.**

Using the PRTF-200 for edge jointing.

The PRTF-200 includes a 1/16” Jointing Shim (B) to allow you to easily use your router table for edge jointing operations.

- **Loosen the two Phillip head bolts on the outfeed fence face and slide the face off of the fence.**
- **Install the 1/16” jointing shim (B) over the two bolts and reinstall the fence face onto the fence. The shim should sit between the fence extrusion and face board.**
- **Position the face board in your desired location and tighten the mounting screws.**
- **Align the Outfeed face with the cutting edge of your favorite flush trim or straight router bit. You are now ready to make 1/16” jointing cuts at your router table.**