



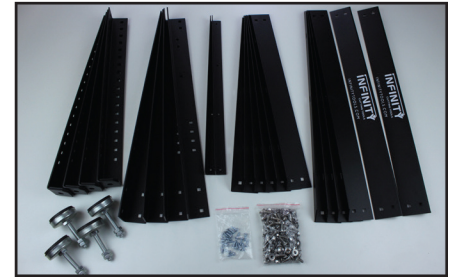
Heavy Duty Tool Stand Instructions, Item: HDTS-001

Congratulations on choosing our Infinity Tools Heavy Duty Tool Stand. We believe you will find this product to be among the sturdiest and most durable tool stands in your workshop. This tool stand can be assembled in a variety of configurations allowing for working heights from approximately 22-1/4" – 23-3/4" / 25-1/4" – 43-3/4" with the included leveling feet (25"/28" – 45" in 1" increments with optional caster set) not including top. Depending on your desired configuration, all nuts, bolts, rails, and leg sections may not be needed.



Stand Components:

1. (4) Lower leg sections
2. (4) Upper leg sections
3. (6) Front/back rails 25-1/2"
4. (6) Side rails 21-1/2"
5. (2) Table reinforcing bars (for use with Infinity Tools Router Table Top, Item: RTT-002)
If you are using the (115-118) Dust Cube, this takes the place of the reinforcing bars, making the bars unneeded.
6. (4) Leveling feet with hardware.
7. Hardware Pack containing 64x stainless carriage bolt & 64x stainless flange nuts
8. Hardware Pack Containing 20x Phillips head wood screws



Stand components

Step 1: Leg Assembly (see fig -1)

Starting with the leg assemblies, set the length of the legs to the desired height with the lower leg section inside the upper leg section. Take note that the included leveling feet will add a minimum of 1-1/2" to the stand height and allow for an additional 1-1/2" of height adjustment.

Step 2: Installing Rails (see fig -1)

Install the rails inside the leg assemblies using (2) carriage bolts and (2) flange nuts at each junction. Tighten the hardware only hand tight. The center rails can be positioned and used to support a shelf. If the center rails are not being used, be sure to attach the upper and lower leg sections using at least (2) nuts/bolts on each face. Each stand includes two front/back rails with the Infinity Tools logo. These can be positioned wherever you would like. We recommend using them either as the top or middle rails to display the Infinity Tools name with pride.



(fig -1)

Step 3: Adding A Top

If using an Infinity Tools Router Table Top (Item: RTT-002), use the included wood screws to secure the stand and two reinforcing bars to the top using the predrilled holes as a guide. Any top can be attached to the stand by flipping the top and stand upside down and using the holes in the stand as a guide to drill pilot holes for the #10 screws. Attaching your top before tightening the hardware will ensure the top is supported properly.

Step 4: Square, Tighten & Install Feet

Square the stand assembly and tighten all hardware (see fig -2). Install the leveling feet into the legs so that one nut is above and one below the mounting flange. Set the stand on its feet and level as necessary (see fig -3).

Step 5: Hardware

Though not necessary, we recommend installing any remaining hardware into open holes in the legs. This will reinforce the assembly and allow the stand to be reconfigured to any height in the future.

***Note:** The optional Infinity Tools Caster Set (Item: HDC-001) will add 2-3/4" overall to the stand height.

***Note:** If using the Infinity Tools Z Bracket (Item: 115-054) with the stand at its lowest settings, the lower round mounting hole may need to be drilled with a 1/4" bit using the hole in the upper leg as a guide. This can be done with the stand fully assembled.



(fig -2)



(fig -3)