

OUTRIDE  
THE  
ORDINARY

INSTALLATION GUIDE

PART

BUZZRAW PRO FENDERS



COLOUR

BLACK

@coastcycles

<http://coastcycles.com>

## 01. CONTENT PAGE

IMPORTANT INFORMATION	2
REQUIRED TOOLS	3
BOX CONTENTS	4
HARDWARE IDENTIFICATION	5
FRAME PREPARATION	6
FRONT FENDER INSTALLATION	8
REAR FENDER INSTALLATION	14

## COMPATIBLE WITH

BUZZRAW CLASSIC



BUZZRAW PRO



## 02. IMPORTANT INFORMATION

Please read and understand the instructions carefully before installing the Buzzraw Classic/Pro fenders onto the bike.

Take note of the difference between the hardware for the front and rear fenders. Information can be found on page 4.

If you encounter any issues during the installation procedure, please contact us at:

[enquiries@coastcycles.com](mailto:enquiries@coastcycles.com)

### 03. REQUIRED TOOLS

#### TOOLS

M6 x 10mm Tap

M5 x 0.8mm Tap

4mm Allen Key or Hex Bit

8mm Socket Wrench or Spanner

10mm Socket Wrench or Spanner

Torque Wrench

## 04. BOX CONTENTS

### FRONT FENDER HARDWARE

- 1 Front Fender (X1)
- 2 Front Fender Strut (X1)
- 3 M5 x 10mm Button Head Bolt (X4)
- 4 M6 x 15mm Button Head Bolt (X1)
- 5 M5 Nylon Locknut (X4)
- 6 M6 x 5mm Spacer (X1)
- 7 M5 Washer (X2)
- 8 M6 Washer (X1)
- 9 Cup Washer (X2)
- 10 QR Plate (X2)



(Fig. 1) Front Fender Hardware



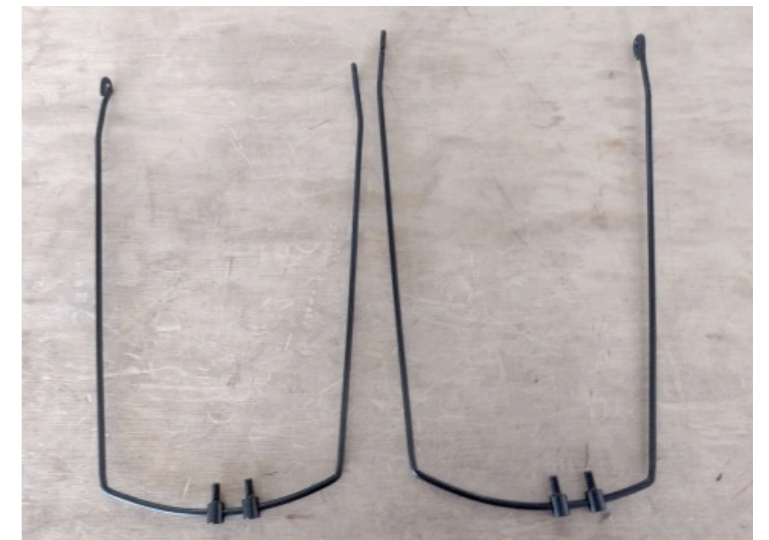
(Fig. 2) Rear Fender Hardware

### REAR FENDER HARDWARE

- 1 Rear Fender (X1)
- 2 Rear Fender Strut (X1)
- 3 M6 x 10mm Button Head Bolt (X2)
- 4 M6 x 35mm Button Head Bolt (X2)
- 5 M5 Nylon Locknut (X2)
- 6 M6 Nylon Locknut (X2)
- 7 M5 Washer (X2)
- 8 M6 Washer (X4)
- 9 Cup Washer (X2)



(Fig. 3) Front and Rear Fender



(Fig. 4) Front Strut (Left) and Rear Strut (Right)

## 05. HARDWARE IDENTIFICATION

The rear fender can be identified by the mounting tab with a slotted hole located on one end of the fender. (Fig. 5)



(Fig. 5) Mounting tab on the rear fender.

Cup washer and M6x5mm spacer identification. (Fig. 6 & 7)



(Fig. 6) Cup washers



(Fig. 7) M6x5mm spacer

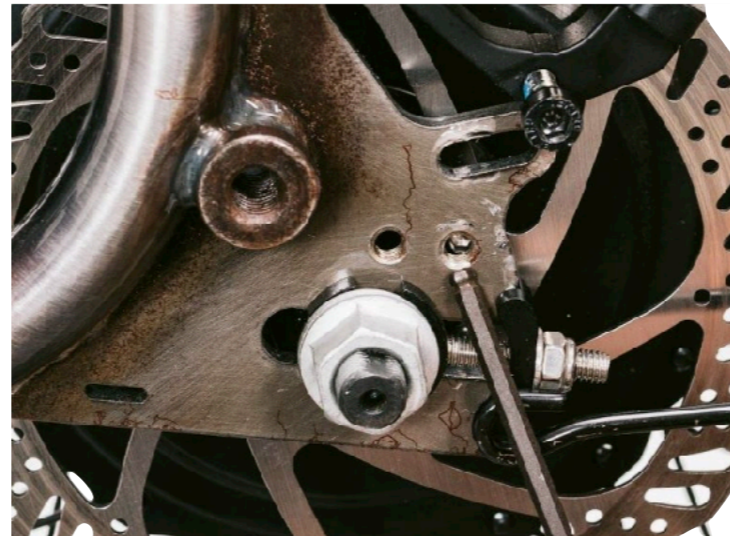
## 06. FRAME PREPARATION

The mounting points for the fender struts may need to be cleared of excess paint left over from the manufacturing process.

The residual paint will make it difficult to thread the mounting bolts into their respective points.

This will cause inaccurate torque readings when attempting to tighten the bolts to their specified torque value.

Use the M6x1.0mm tap to clear the residual paint out of the mounting points in the rear dropouts. (Fig. 8)



(Fig. 8) Clear the threads of the mounting hole indicated above with a M6x1.0mm tap.

### HARDWARE REQUIRED

M6x1.0mm Tap

Use the M5x0.8mm tap to clear the residual paint out of the mounting points in the fork dropouts.  
(Fig. 9)



(Fig. 9) Clear the threads of the mounting hole in the fork with a M5x0.8mm tap.

#### HARDWARE REQUIRED

M5x0.8mm Tap



## 07. INSTALLATION PROCEDURE

### FRONT FENDER

Remove the front wheel from the fork on the bicycle.

Locate the fender attachment points on the Front Fender Mounting Strut and position them along the horizontal bar of the strut.

Place the cup washers onto the threaded ends hollow side down. (Fig. 10 & 11)



(Fig. 10) Cup washer to be placed hollow side down.



(Fig. 11) Cup washers on the fender attachment points.

### HARDWARE REQUIRED

Front Fender Strut (X1)  
Cup Washers (X2)

Place one M5 washer on each of the threaded mounting points (Fig. 12) before threading on the M5 locknuts. (Fig. 13)



(Fig. 12) Place one M5 washer on each of the threaded mounting points.



(Fig. 13) Thread on the M5 locknut after placing the M5 washer.

Make sure that the strut is positioned centrally on the fender before you tighten the M5 locknuts to **3Nm**. (Fig. 14 & 15)

#### HARDWARE/ TOOL REQUIRED

Front Fender (X1)  
Front Fender Strut (X1)  
M5 Washer (X2)  
M5 Nylon Locknut (X2)  
8mm Socket Wrench or Spanner  
Torque Wrench



(Fig. 14) Center the struts on the fender.



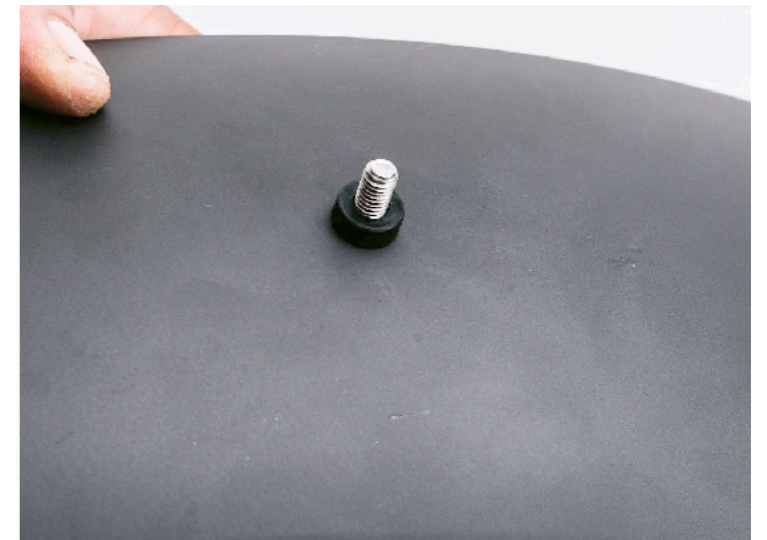
(Fig. 15) Tighten the locknuts to **3Nm**.

Place the M6 washer onto the M6x15mm button head bolt and insert the bolt into the fender from the bottom. (Fig. 16)

Place the M6x5mm spacer over the bolt. (Fig. 17)



(Fig. 16) Place the M6 washer onto the M6x15mm button head bolt and insert the bolt into the fender from the bottom.



(Fig. 17) Place the M6x5mm spacer over the bolt.

Apply Loctite 243 to the bolt threads. (Fig. 18)

#### HARDWARE REQUIRED

Front Fender (X1)  
M6x15mm Button Head Bolt (X1)  
M6 Washer (X1)  
M6x5mm Spacer (X1)



(Fig. 18) Apply Loctite 243 to the bolt threads.

Thread the M6x15mm button head bolt into the center mounting point on the Buzzwalker fork.  
(Fig. 19)

Ensure the fender is aligned as straight as possible. Use a 4mm Allen key or hex bit to tighten the bolt to **4Nm**. (Fig. 20)



(Fig. 19) Thread the M6x15mm button head bolt into the center mounting point on the Buzzwalker fork.



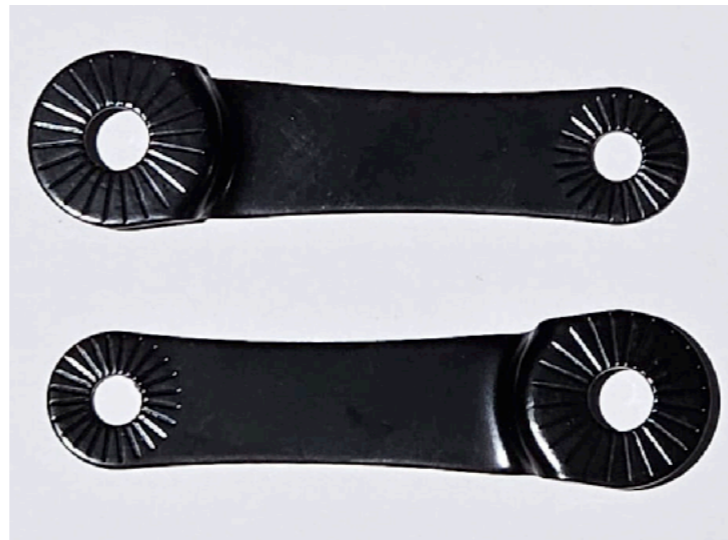
(Fig. 20) Tighten the bolt to **4Nm**.

#### HARDWARE/ TOOL REQUIRED

Front Fender (X1)  
4mm Allen Key or Hex Bit  
Torque Wrench

Install the QR plates (Fig. 21) at the end of the fender strut with a M5x10mm button head bolt and a M5 nylon locknut.

Please take note of the orientation of the plate. The larger section of the QR plate should be installed on the strut. (Fig. 22)



(Fig. 21) QR Plates.



(Fig. 22) Please take note of the plates orientation.

Apply medium strength thread locker to the M5x10mm button head bolt before threading the bolt into the mounting point on the fork. (Fig. 23) Tighten to **4Nm**. (Fig. 24)

#### HARDWARE/ TOOL REQUIRED

Front Fender Strut (X1)  
QR Plates (X2)  
M5x10mm Button Head Bolt (X4)  
M5 Nylon Locknut (X2)  
3mm Allen Key or Hex Bit  
8mm Socket Wrench or Spanner  
Torque Wrench



(Fig. 23) Apply medium strength thread locker to the M5x10mm button head bolt.



(Fig. 24) Installation on the mounting point on the fork. Tighten to **4Nm**.

Reinstall the front wheel and check the alignment of the fender. The front fender installation is completed. (Fig. 25)



(Fig. 25) Front Fender Installation Complete.

## 08. INSTALLATION PROCEDURE

### REAR FENDER

Remove the rear wheel from the bicycle.

Locate the fender attachment points on the Rear Fender Mounting Strut and position them along the horizontal bar of the strut.

Place the cup washers onto the threaded ends hollow side down. (Fig. 26 & 27)



(Fig. 26) Cup washer to be placed hollow side down



(Fig. 27) Cup washers on the fender attachment points

### HARDWARE REQUIRED

Rear Fender Strut (X1)  
Cup Washers (X2)

Place one M5 washer on each of the threaded mounting points (Fig. 28) before threading on the M5 locknuts. (Fig. 29)



(Fig. 28) Place one M5 washer on each of the threaded mounting points.



(Fig. 29) Thread on the M5 locknut after placing the M5 washer.

Make sure that the strut is positioned centrally on the fender before you tighten the M5 locknuts to **3Nm**. (Fig. 30 & 31)

#### HARDWARE REQUIRED

Rear Fender (X1)  
Rear Fender Strut (X1)  
M5 Washer (X2)  
M5 Nylon Locknut (X2)  
8mm Socket Wrench or Spanner  
Torque Wrench



(Fig. 30) Center the struts on the fender.



(Fig. 31) Tighten the locknuts to **3Nm**.



Place the M6 washer onto the M6x35mm button head bolt.

Insert the M6x35mm button head bolt with M6 washer into the hole on the seat stay bridge of the frame. (Fig. 32)

Place the M6 washer over the bolt followed by the M6 nylon locknut. (Fig. 33)

Ensure the fender is aligned as straight as possible. Use a 4mm Allen key or hex bit to prevent the bolt from rotating. At the same time, use a 10mm socket wrench or spanner with a torque wrench to tighten the M6 nylon locknut with M6 washer to **4Nm**.



(Fig. 32) Insert the M6x35mm button head bolt with M6 washer into the hole on the seat stay bridge of the frame.



(Fig. 33) Place the M6 washer over the bolt followed by the M6 nylon locknut. Tighten the M6 nylon locknut to **4Nm**.

#### HARDWARE/ TOOL REQUIRED

Rear Fender (X1)  
M6x35mm Button Head Bolt (X1)  
M6 Washer (X2)  
M6 Nylon Locknut (X1)  
4mm Allen Key or Hex Bit  
10mm Socket Wrench or Spanner  
Torque Wrench

Place the M6 washer onto the M6x35mm button head bolt.

Insert the M6x35mm button head bolt with M6 washer into the hole on the chain stay bridge of the frame. (Fig. 34)

Place the M6 washer over the bolt followed by the M6 nylon locknut. Tighten to **4Nm**. (Fig. 35)



(Fig. 34) Insert the M6x35mm button head bolt with M6 washer into the hole on the chain stay bridge of the frame.



(Fig. 35) Place the M6 washer over the bolt followed by the M6 nylon locknut. Tighten the M6 nylon locknut to **4Nm**.

Apply the medium strength thread locker to the M6 x10mm button head bolt. (Fig. 36)

Thread the bolt through the fender strut loop and into the mounting point on the rear of the frame. Tighten to **4Nm**. (Fig. 37)

#### HARDWARE/ TOOL REQUIRED

Rear Fender (X1)  
 Rear Fender Strut (X1)  
 M6x35mm Button Head Bolt (X1)  
 M6x10mm Button Head Bolt (X2)  
 M6 Washer (X2)  
 M6 Nylon Locknut (X1)  
 4mm Allen Key or Hex Bit  
 10mm Socket Wrench or Spanner  
 Torque Wrench



(Fig. 36) Apply medium strength thread locker to the M6x10mm button head bolt.



(Fig. 37) Thread the bolt through the fender strut loop and into the mounting point on the rear mounting point. Tighten the bolt to **4Nm**.

Once you have completed the installation on both mounting points, reinstall the rear wheel. The rear fender installation is completed. (Fig. 38)



(Fig. 38) Rear Fender Installation Complete.

**COASTCYCLES**