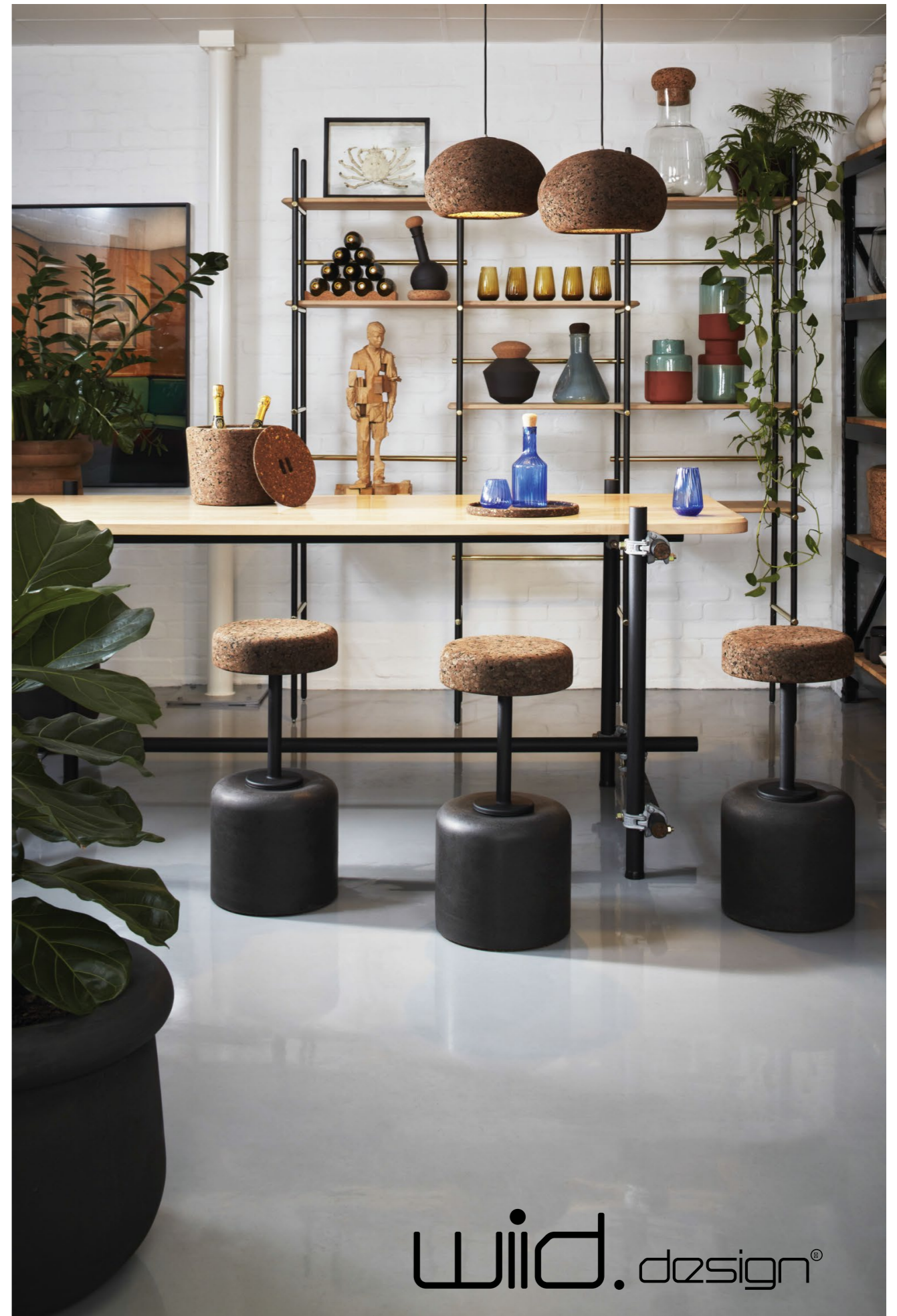
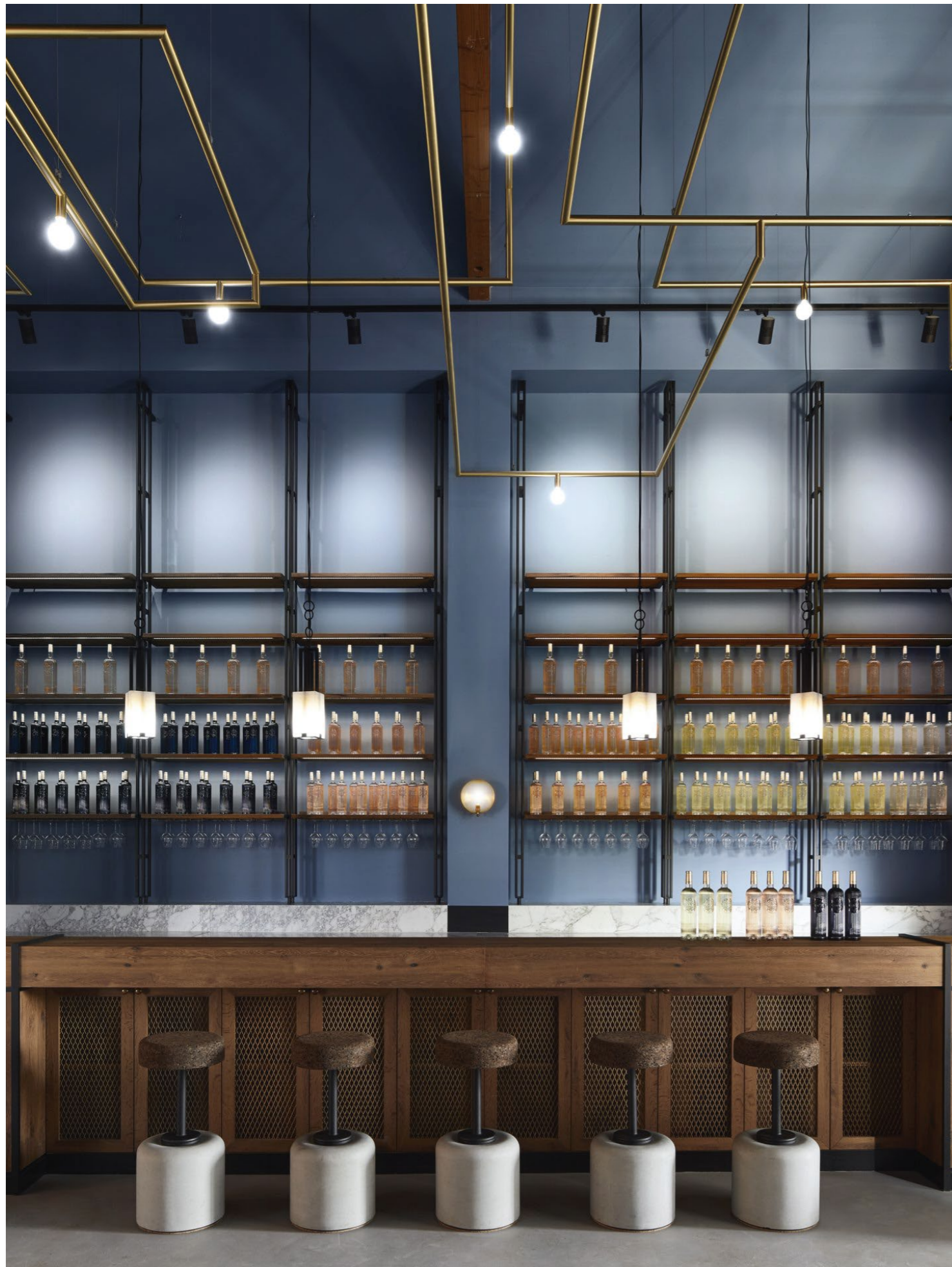




wiid. design°



wild. design®



wiid. design®



SPECIFICATIONS

Cork, Steel and Concrete Bar Stool

Height	660mm / 760mm
Length	350 mm
Width	350 mm
Weight	Light facade cork - 40.5 Kg Dark facade cork - 40 Kg

These bar stools are manufactured from concrete, 100mm thick cork and engineered steel components. The concrete bases are available in dark charcoal, natural cement and terrazzo.

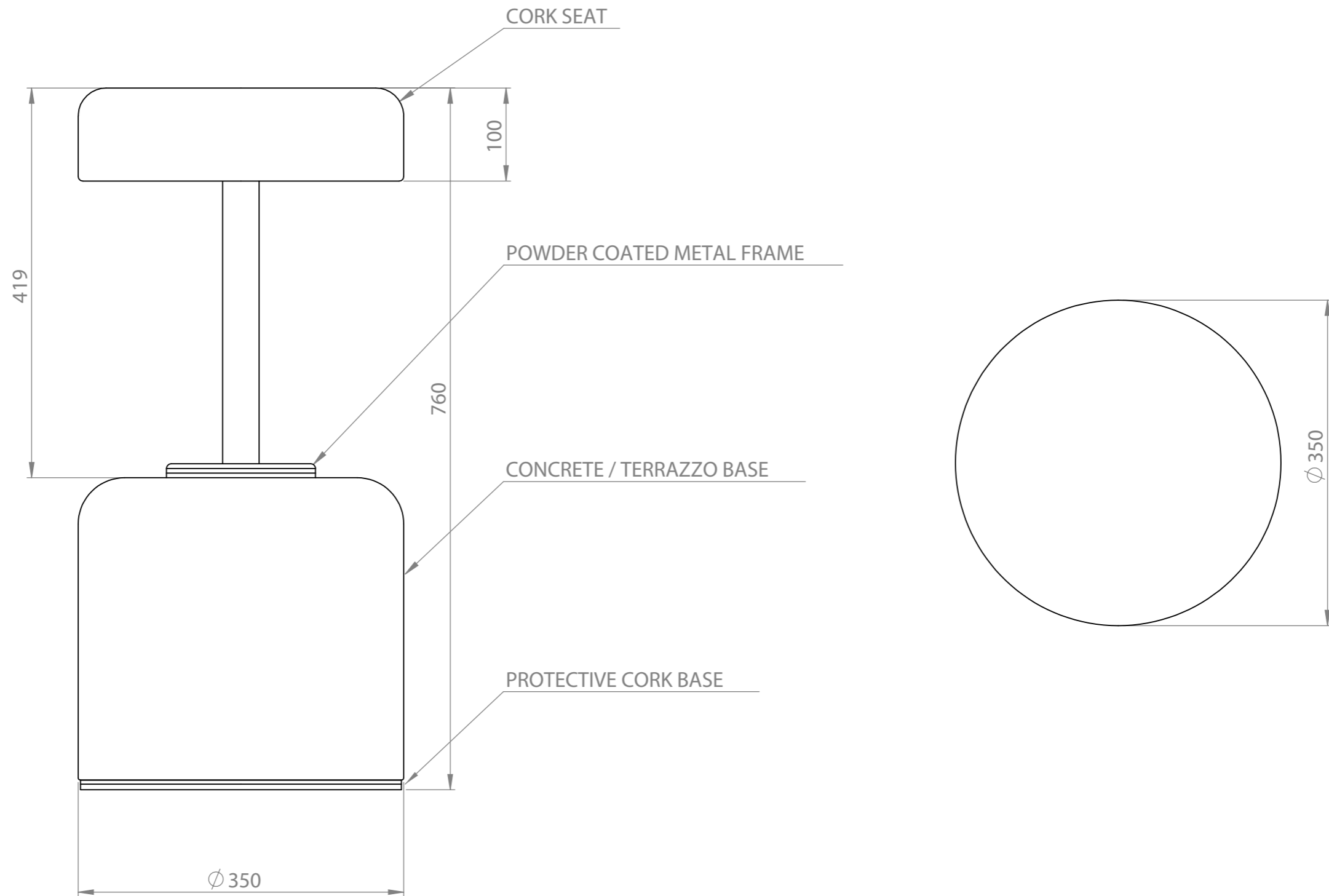
The seats are available in dark or light cork and the steel is powder coated in a durable black ferrograin coating.

Built in ball bearings allow each bar stool to swivel. Please note that these bar stools are designed for counter heights of 900mm or 1000mm.

This product is suitable for indoor and outdoor use, only the dark cork grades are suitable for outdoor use.

Seat	Dark or Light facade grade cork Dark or Light composite grade cork
Frame	Black powder coated steel
Base	Natural cement colour Dark charcoal colour Black and white terrazzo

760mm Cork , Concrete and Steel Bar Stool



660mm Cork , Concrete and Steel Bar Stool

